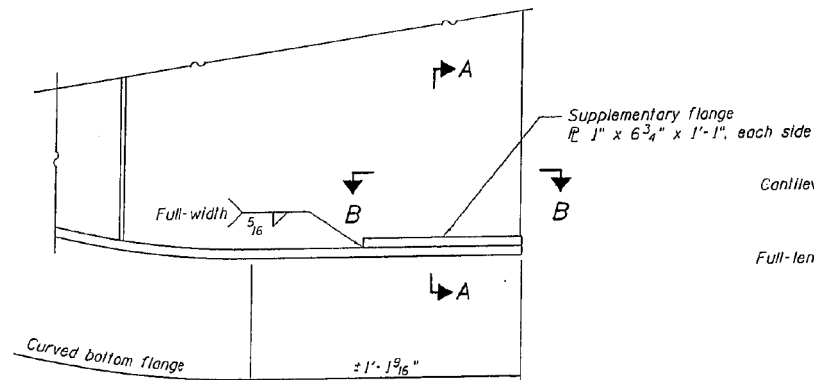
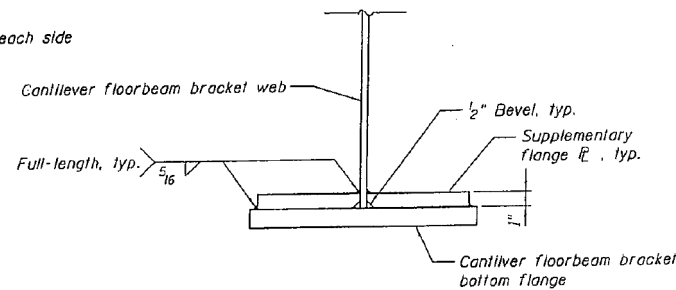


STATE OF ILLINOIS  
DEPARTMENT OF TRANSPORTATION



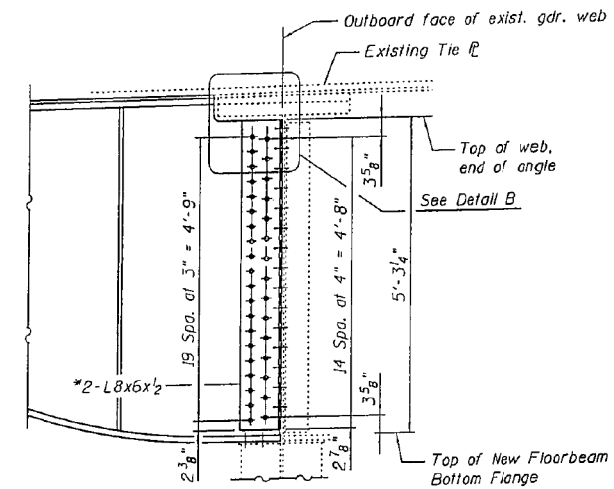
**SUPPLEMENTAL BOTTOM FLANGE PLATE  
AT CANTILEVER FLOORBEAM BRACKET  
DOUBLE GIRDER SPANS**

Bottom of cantilever floorbeam web connection angles shall be trimmed  $\frac{3}{4}$ " to avoid conflict with supplementary flange plates. For the web connection angle details, see Sheet No. 9.



**SECTION A-A**

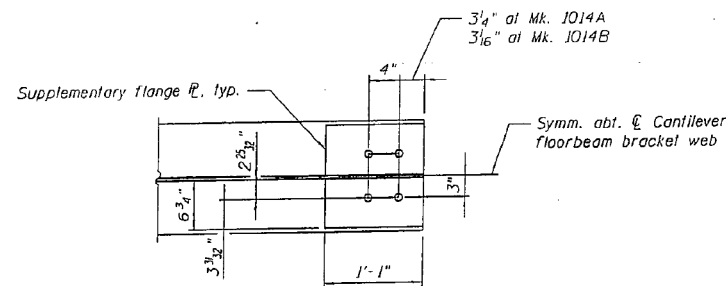
Note: Weld between bracket web and bottom flange not shown for clarity.



\* Grade 50WT2, one coat shop primer

**CANTILEVER FLOORBEAM BRACKET  
MODIFICATION AT MARK NO. 1014A, 1014D AND 1014E**

Mk. No. 1014A - Span 12, Floorbeam 7, Westbound only  
Mk. No. 1014A - Span 16, Floorbeam 1, Eastbound only  
Mk. No. 1014D - Span 15, Floorbeam 4, Eastbound only  
Mk. No. 1014E - Span 14, Floorbeam 18, Eastbound only

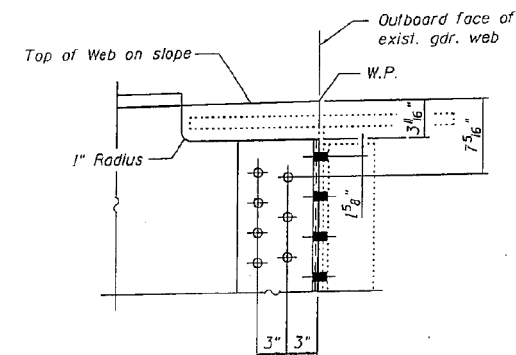


**SECTION B-B  
FLOORBEAM MARK NO. 1014A AND 1014B**

**PLATE LOCATIONS**

MARK NO.	SPAN	FLRBM NO.
1014A	12	FB7
	16	FB1
1014B	14	FB3
	14	FB15

Note: Supplemental plates required on westbound Cantilever Floorbeam Brackets only.



**DETAIL B**

Notes:  
Reference to cantilever floorbeam mark numbers are from 1965 original shop drawings.  
For location of mark numbers, see Sheet No. 9.  
 $1\frac{5}{16}$ "  $\phi$  Holes for  $\frac{7}{8}$ "  $\phi$  HS A325 bolts.

**CANTILEVER FLOORBEAM REPLACEMENT  
DOUBLE GIRDER SPANS - 2  
I-80 OVER  
MISSISSIPPI RIVER  
STRUCTURE NO. 081-0011**

DESIGNED YSS  
CHECKED DWP  
DRAWN PRC  
CHECKED YSS

02/17/11



New Sheet

SHEET NO. 9A	F.A.J. RTE.	SECTION	COUNTY	TOTAL SHEETS	SHEET NO.
33 SHEETS	80	(81-1B)M-4	ROCK ISLAND		
		SN 081-0011		CONTRACT NO. 64F31	
	FED. ROAD DIST. NO. 7 ILLINOIS FED. AID PROJECT				

Construction Change 02/17/11 P.R.C.

DESIGNED VHV  
CHECKED DAB  
DRAWN baliva  
CHECKED VHV DAB

EXAMINED *Timothy A. Doolittle*  
ACTING ENGINEER OF STRUCTURAL SERVICES

PASSED *Carl Berger*  
ACTING ENGINEER OF BRIDGES AND STRUCTURES

DATE - OCTOBER 12, 2012

STATE OF ILLINOIS  
DEPARTMENT OF TRANSPORTATION

FOR INFORMATION ONLY  
SN 081-0011

SHEET 26 OF 42 SHEETS

F.A. RTE.	SECTION	COUNTY	TOTAL SHEETS	SHEET NO.
80	D2 BRIDGE PAINTING 2012-2	ROCK ISLAND	46	30
				CONTRACT NO. 64H81
ILLINOIS FED. AID PROJECT				