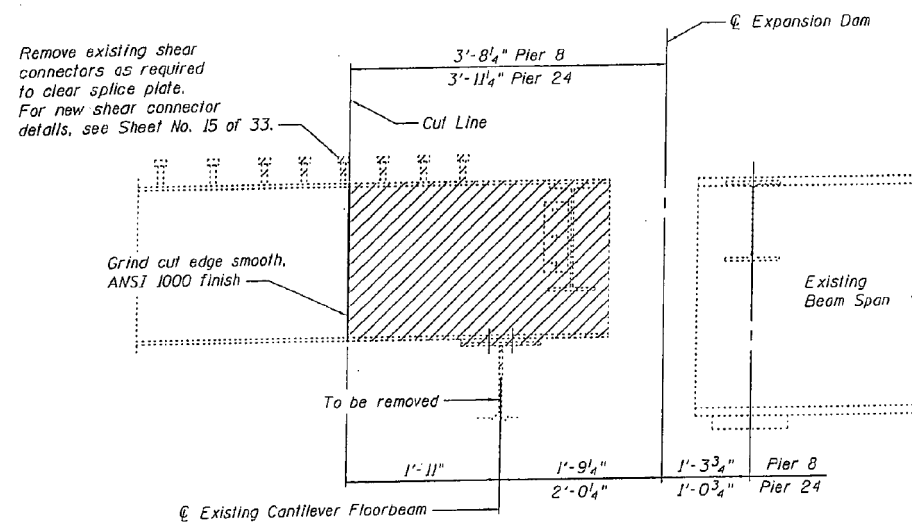


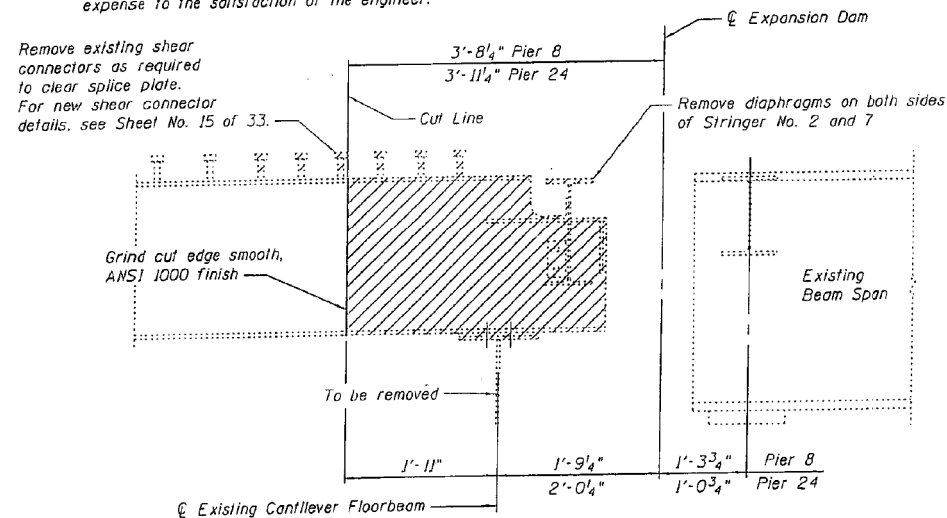
STATE OF ILLINOIS
DEPARTMENT OF TRANSPORTATION

Note: Expansion Dams not shown for clarity.

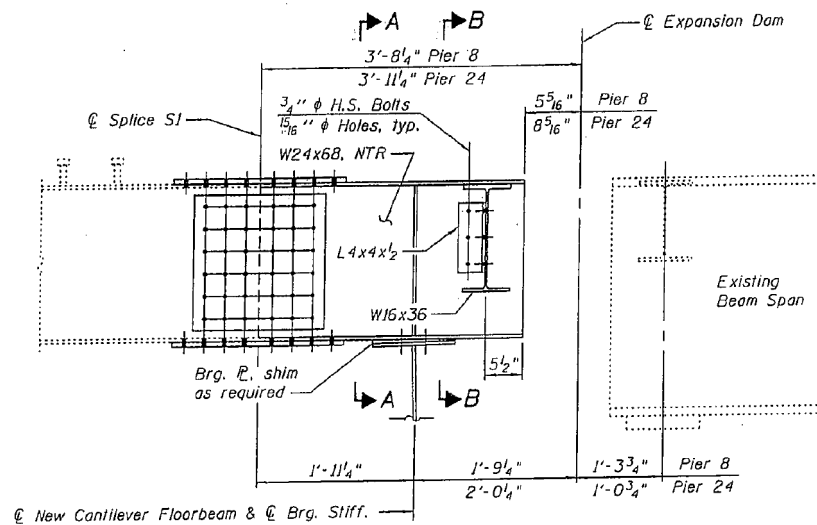


**STRINGER END REPAIR AT EXPANSION DAM
PIER 8 AND 24 - STRINGER LINES 1 AND 8
TYPICAL REMOVAL ELEVATION**

Note:
Remaining exposed shear connectors damaged as a result of construction shall be replaced, at the contractor's expense to the satisfaction of the engineer.

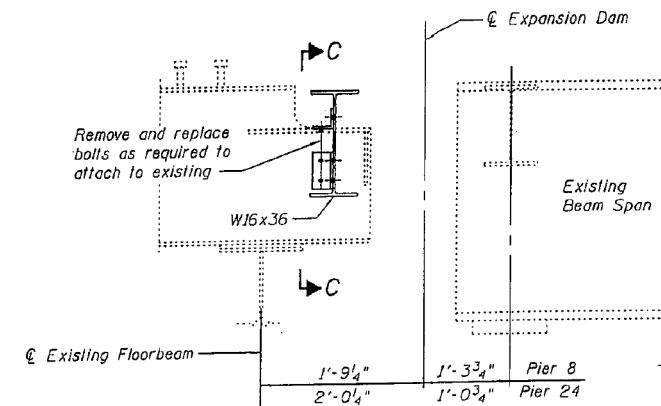


**STRINGER END REPAIR AT EXPANSION DAM
PIER 8 AND 24 - STRINGER LINES 2 AND 7
TYPICAL REMOVAL ELEVATION**

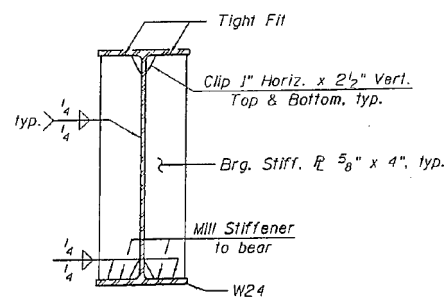


**STRINGER END REPAIR AT EXPANSION DAM
PIER 8 AND 24 - STRINGER LINES 1, 2, 7 AND 8
TYPICAL ELEVATION**

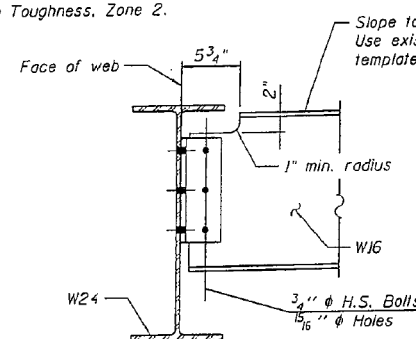
Note:
Load carrying components designated "NTR" shall conform to the supplemental requirement for Notch Toughness, Zone 2.



**DIAPHRAGM CONNECTION AT EXPANSION DAM
PIER 8 AND 24 - STRINGER LINES 3 AND 6**

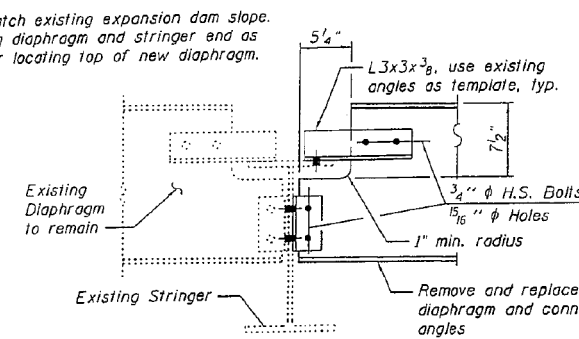


SECTION A-A



SECTION B-B

Stringer No. 1 & 8 shown,
Stringer No. 2 & 7 similar



SECTION C-C

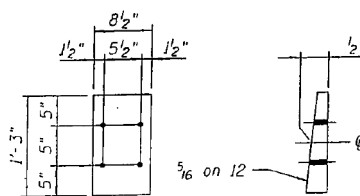
BILL OF MATERIAL

Item	Unit	Total*
Structural Steel Repair	Pound	209,500

* For all stringer end repairs.

Notes:
For General Notes, see Sheet No. 3 of 33.
For Splice details, see Sheet No. 14 of 33.
For deck removal, see Sheet No. 23 of 33.
For Expansion Dam details, see Sheet No. 29 of 33.
Two 5/8" adjusting shims shall be provided for each bearing in addition to all other plates or shims and placed as shown on bearing details.

3/4" dia. H.S. bolts (in 5/16" dia. holes) shall be provided with two hardened washers conforming to ASTM F436 installed under both the head and the nut.



BEARING P

STRINGER END REPAIR DETAILS - 1

**I-80 OVER
MISSISSIPPI RIVER
STRUCTURE NO. 081-0011**

DESIGNED	YSS
CHECKED	ACK
DRAWN	PRC
CHECKED	YSS



09/17/09

SHEET NO. //	F.A.I. RTE.	SECTION	COUNTY	TOTAL SHEETS	SHEET NO.
33 SHEETS	80	(81-1B)M-4	ROCK ISLAND		
SN 081-0011			CONTRACT NO. 64F31		
FED. ROAD DIST. NO. 7 ILLINOIS FED. AID PROJECT					

Construction Change 02/17/11 P.R.C.

DESIGNED	VHV	EXAMINED	<i>Timothy A. ...</i>	DATE	OCTOBER 12, 2012
CHECKED	DAB	PASSED	<i>Carl ...</i>		
DRAWN	baliva				
CHECKED	VHV DAB				

STATE OF ILLINOIS
DEPARTMENT OF TRANSPORTATION

FOR INFORMATION ONLY
SN 081-0011

SHEET 27 OF 42 SHEETS

F.A.I. RTE.	SECTION	COUNTY	TOTAL SHEETS	SHEET NO.
80	D2 BRIDGE PAINTING 2012-2	ROCK ISLAND	46	31
CONTRACT NO. 64H81			ILLINOIS FED. AID PROJECT	