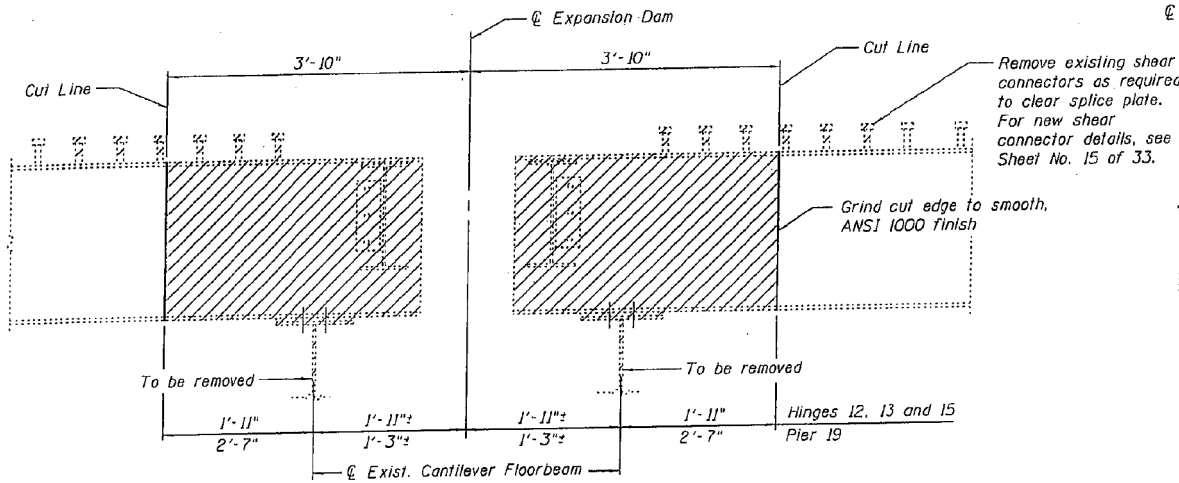
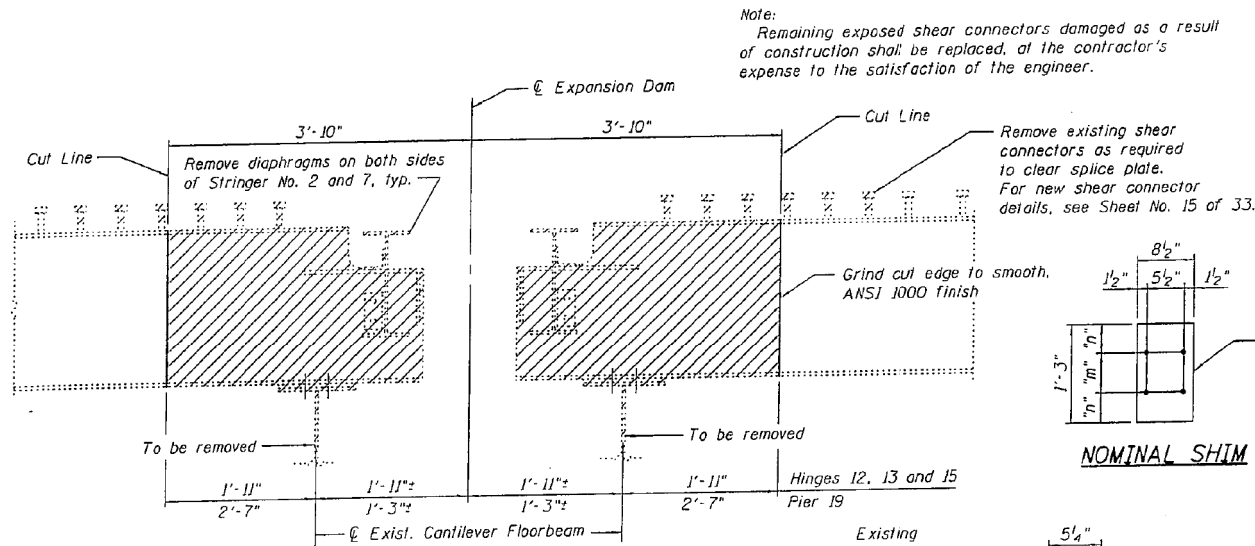


STATE OF ILLINOIS
DEPARTMENT OF TRANSPORTATION

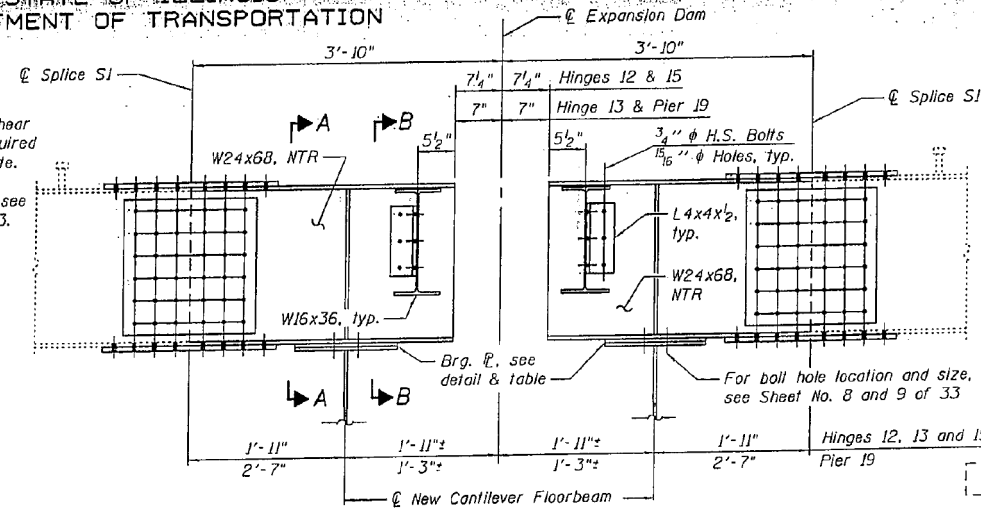
Note: Expansion Dams not shown for clarity.



**STRINGER END REPAIR AT EXPANSION DAM
HINGES 12, 13, 15 AND AT PIER 19
STRINGER LINES 1 AND 8 - TYPICAL REMOVAL ELEVATION**

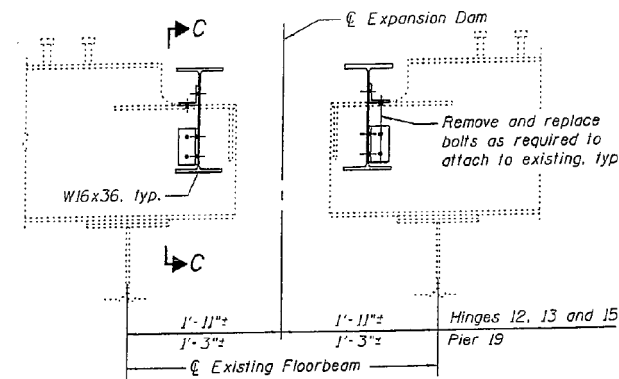


**STRINGER END REPAIR AT EXPANSION DAM
HINGES 12, 13, 15 AND AT PIER 19
STRINGER LINES 2 AND 7 - TYPICAL REMOVAL ELEVATION**



**STRINGER END REPAIR AT EXPANSION DAM
HINGES 12, 13, 15 AND AT PIER 19
STRINGER LINES 1, 2, 7 AND 8 - TYPICAL ELEVATION**

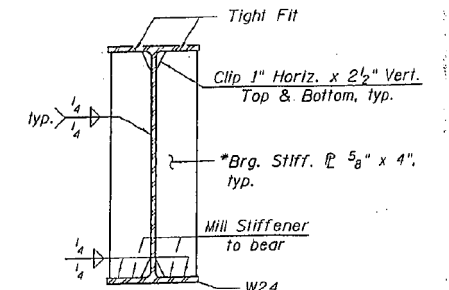
Note: Load carrying components designated "NTR" shall conform to the supplemental requirement for Notch Toughness, Zone 2.



**DIAPHRAGM CONNECTION AT EXPANSION DAM
HINGES 12, 13, 15 AND AT PIER 19
STRINGER LINES 3 AND 6**

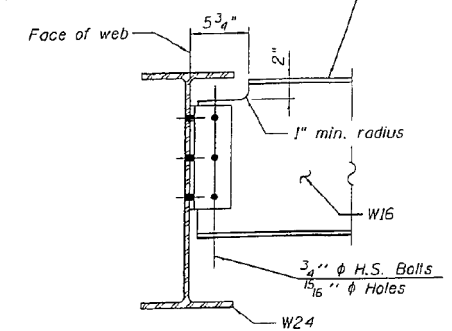
TABLE OF BEARING P's

LOCATION	GDR. SPAN	STRINGER NO.	"m"	"n"	"u"	NOMINAL SHIM
Hinge 12 & 15	Single	1 & 8	5"	5"	---	Req'd.
	Double	1 & 8	5"	5"	1/2"	Req'd.
Hinge 13	Single	1 & 8	5"	5"	1/4"	Req'd.
	Double	1 & 8	5"	5"	1/4"	Req'd.
Pier 19	Single	1 & 8	5"	5"	1/2"	---
	Double	1 & 8	5"	5"	1/2"	---



SECTION A-A
* Bearing stiffener plates eliminated at Pier 19

Slope to match existing expansion dam slope. Use existing diaphragm and stringer end as template for locating top of new diaphragm.



SECTION B-B
Stringer No. 1 & 8 shown. Stringer No. 2 & 7 similar

Notes:
For General Notes, see Sheet No. 3 of 33.
For Bill of Material, see Sheet No. 11 of 33.
For Splice details, see Sheet No. 14 of 33.
For deck removal, see Sheet No. 22 of 33.
For Expansion Dam details, see Sheet No. 29 of 33.
Two 1/8" adjusting shims shall be provided for each bearing in addition to all other plates or shims and placed as shown on bearing details.

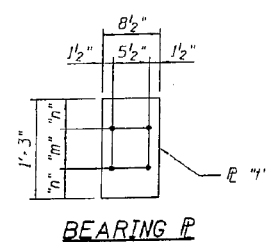
3/4" dia. H.S. bolts (in 5/16" dia. holes) shall be provided with two hardened washers conforming to ASTM F436 installed under both the head and nut.

**STRINGER END REPAIR DETAILS - 2
I-80 OVER
MISSISSIPPI RIVER
STRUCTURE NO. 081-0011**

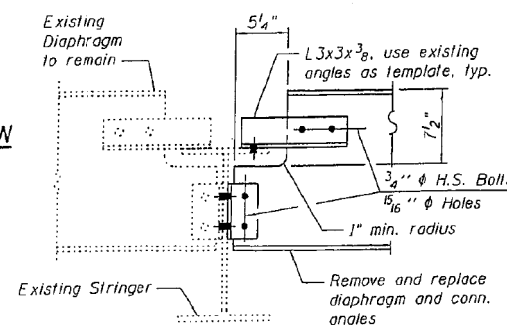
DESIGNED YSS
CHECKED ACK
DRAWN PRC
CHECKED YSS



09/17/09



NOMINAL SHIM



SECTION C-C

Note: See Sheet No. 20 of 33 for structural steel repair F for additional repair at Pier 19.

SHEET NO. 12	F.A.I. RTE.	SECTION	COUNTY	TOTAL SHEETS	SHEET NO.
	80	(81-18)M-4	ROCK ISLAND	46	32
33 SHEETS	SN 081-0011		CONTRACT NO. 64F31		
	FED. ROAD DIST. NO. 7 ILLINOIS FED. AID PROJECT				

Construction Change 02/17/11 P.R.C.

DESIGNED VHV	EXAMINED	DATE	OCTOBER 12, 2012
CHECKED DAB	ACTING ENGINEER OF STRUCTURAL SERVICES		
DRAWN baliva	PASSED		
CHECKED VHV DAB	ACTING ENGINEER OF BRIDGES AND STRUCTURES		

STATE OF ILLINOIS
DEPARTMENT OF TRANSPORTATION

FOR INFORMATION ONLY
SN 081-0011

SHEET 28 OF 42 SHEETS

F.A. RTE.	SECTION	COUNTY	TOTAL SHEETS	SHEET NO.
80	D2 BRIDGE PAINTING 2012-2	ROCK ISLAND	46	32
ILLINOIS FED. AID PROJECT			CONTRACT NO. 64H81	