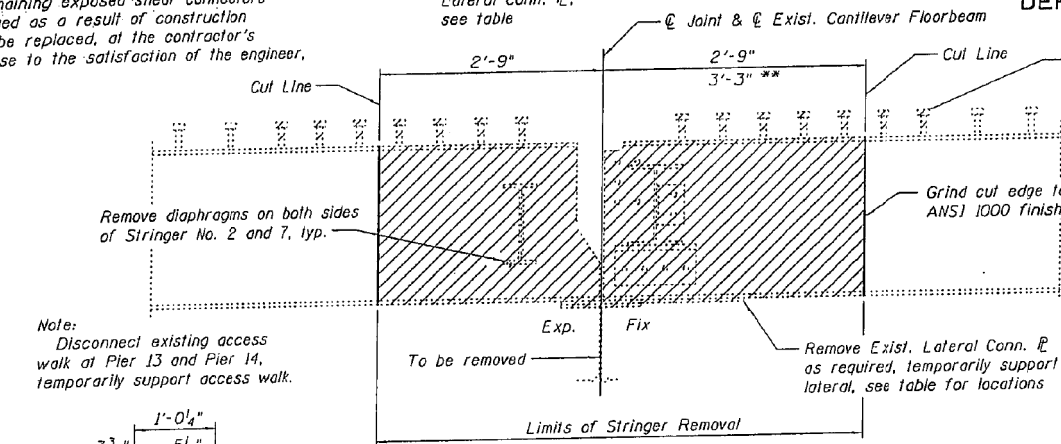


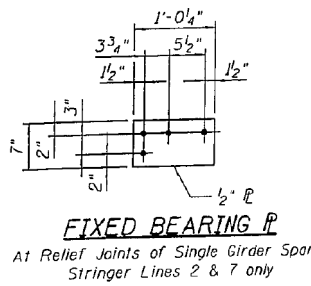
STATE OF ILLINOIS  
DEPARTMENT OF TRANSPORTATION

Note: Remaining exposed shear connectors damaged as a result of construction shall be replaced, at the contractor's expense to the satisfaction of the engineer, typ.

\*\*\*For location with Lateral Conn. R, see table

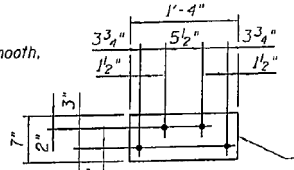


**STRINGER END REPAIR AT RELIEF JOINT  
STRINGER LINES 1, 2, 7 AND 8  
TYPICAL REMOVAL ELEVATION**

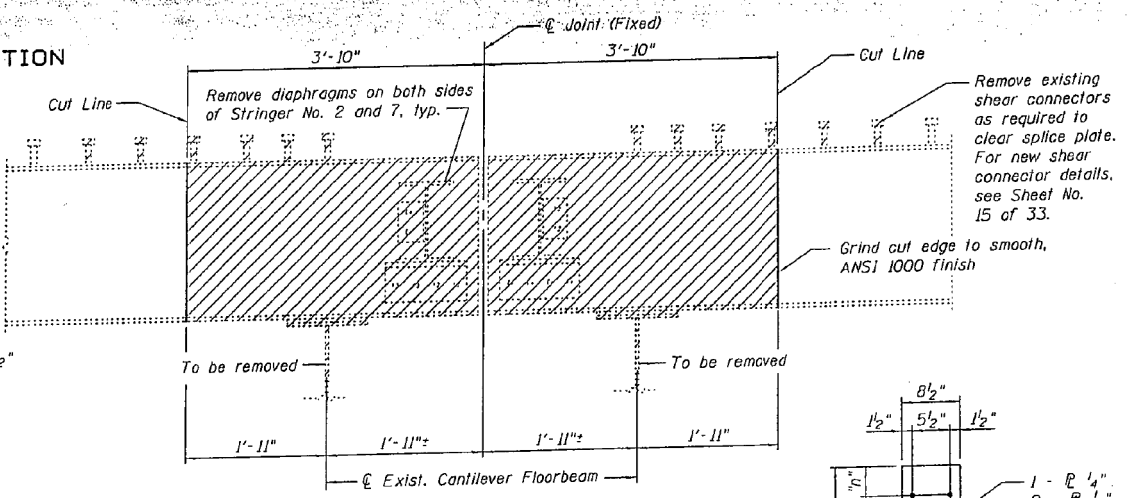


**FIXED BEARING R  
At Relief Joints of Single Girder Spans  
Stringer Lines 2 & 7 only**

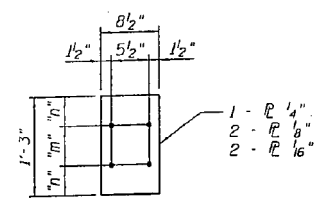
Remove existing shear connectors as required to clear splice plate. For new shear connector details, see Sheet No. 15 of 33.



**FIXED BEARING R  
At Relief Joints of Single Girder Spans  
Stringer Lines 1 & 8 only**

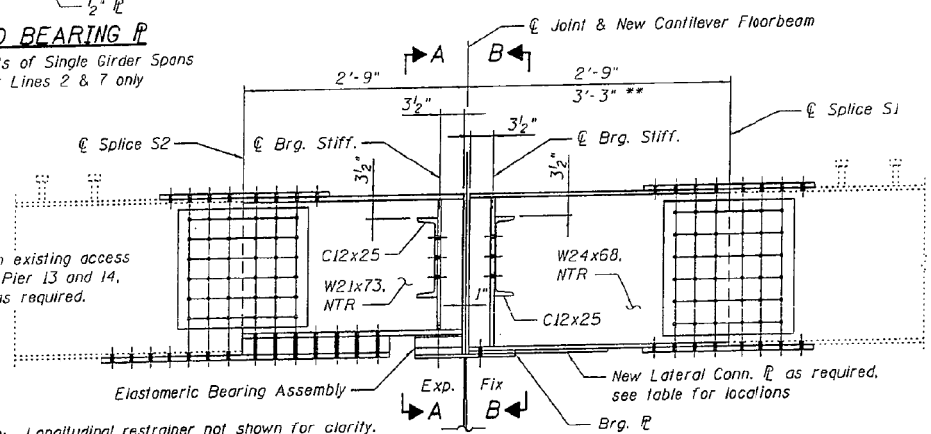


**STRINGER END REPAIR AT HINGE 14  
STRINGER LINES 1, 2, 7 AND 8  
TYPICAL REMOVAL ELEVATION**



**NOMINAL SHIM  
AT HINGE 14**

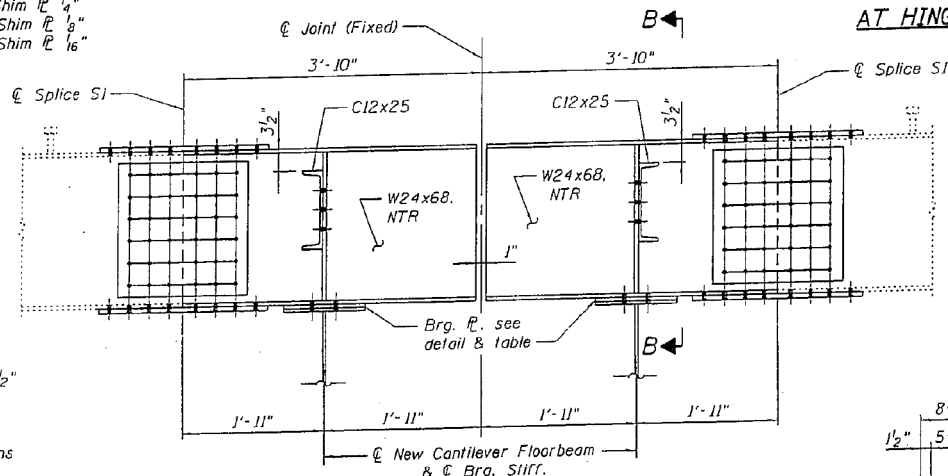
Note: Reattach existing access walk at Pier 13 and 14, modify as required.



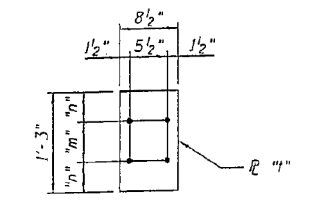
**STRINGER END REPAIR AT RELIEF JOINT  
STRINGER LINES 1, 2, 7 AND 8  
TYPICAL ELEVATION**



**FIXED BEARING R  
AND NOMINAL SHIM  
At Relief Joints of Double Girder Spans  
Stringer Lines 1 & 8 only**



**STRINGER END REPAIR AT HINGE 14  
STRINGER LINES 1, 2, 7 AND 8  
TYPICAL ELEVATION**

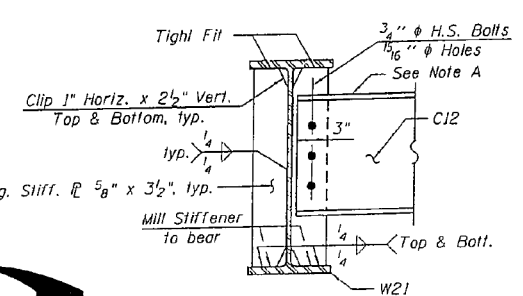


**BEARING R  
AT HINGE 14**

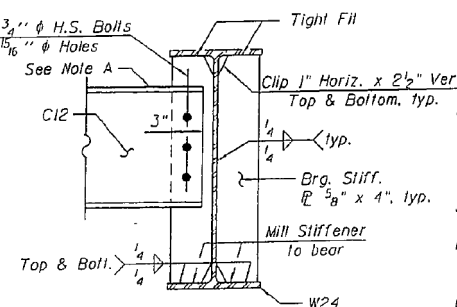
Note: Load carrying components designated "NTR" shall conform to the supplemental requirement for Notch Toughness, Zone 2.

**TABLE OF  
LATERAL CONN. R LOCATIONS  
AT RELIEF JOINTS**

SPAN	FLRBM NO.	STRINGER NO.
9	FB4	1 & 8
19	FB3	1 & 8
22	FB3	1 & 8
22	FB6	1 & 8



**SECTION A-A**  
Stringer No. 1 & 8 shown.  
Stringer No. 2 & 7 similar



**SECTION B-B**  
Stringer No. 1 & 8 shown.  
Stringer No. 2 & 7 similar

**TABLE OF BEARING R's AT HINGE 14**

LOCATION	STRINGER NO.	"m"	"n"	"i"	NOMINAL SHIM
Hinge 14	1 & 8	5"	5"	1/4"	Req'd.
	2 & 7	3 1/2"	5 3/4"	1/4"	---

Notes:  
For General Notes, see Sheet No. 3 of 33.  
For Bill of Material, see Sheet No. 11 of 33.  
For Splice details, see Sheet No. 14 of 33.  
For diaphragm connection at stringer No. 3 and 6, see Sheet No. 14 of 33.  
For Elastomeric Bearing Assembly details, see Sheet No. 16 of 33.  
For deck removal, see Sheet No. 24 thru 26 of 33.  
Two 1/2" adjusting shims shall be provided for each bearing in addition to all other plates or shims and placed as shown on bearing details.

3/4" dia. H.S. bolts (in 1/2" dia. holes) shall be provided with two hardened washers conforming to ASTM F436 installed under both the head and the nut.

**STRINGER END REPAIR DETAILS - 3  
I-80 OVER  
MISSISSIPPI RIVER  
STRUCTURE NO. 081-0011**

DESIGNED YSS  
CHECKED ACK  
DRAWN PRC  
CHECKED YSS  
09/17/09



EXAMINED *Timothy A. Daulton* DATE - OCTOBER 12, 2012  
ACTING ENGINEER OF STRUCTURAL SERVICES  
PASSED *Carl Berger*  
ACTING ENGINEER OF BRIDGES AND STRUCTURES

STATE OF ILLINOIS  
DEPARTMENT OF TRANSPORTATION

FOR INFORMATION ONLY  
SN 081-0011  
SHEET 29 OF 42 SHEETS

F.A.I. RTE.	SECTION	COUNTY	TOTAL SHEETS	SHEET NO.
80	(81-1B)M-4	ROCK ISLAND	46	33
SN 081-0011		CONTRACT NO. 64F31		
ILLINOIS FED. AID PROJECT				

Construction Change 02/17/11 P.R.C.