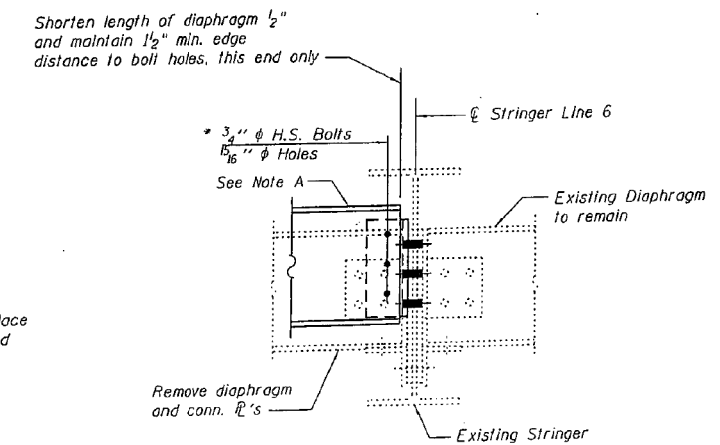
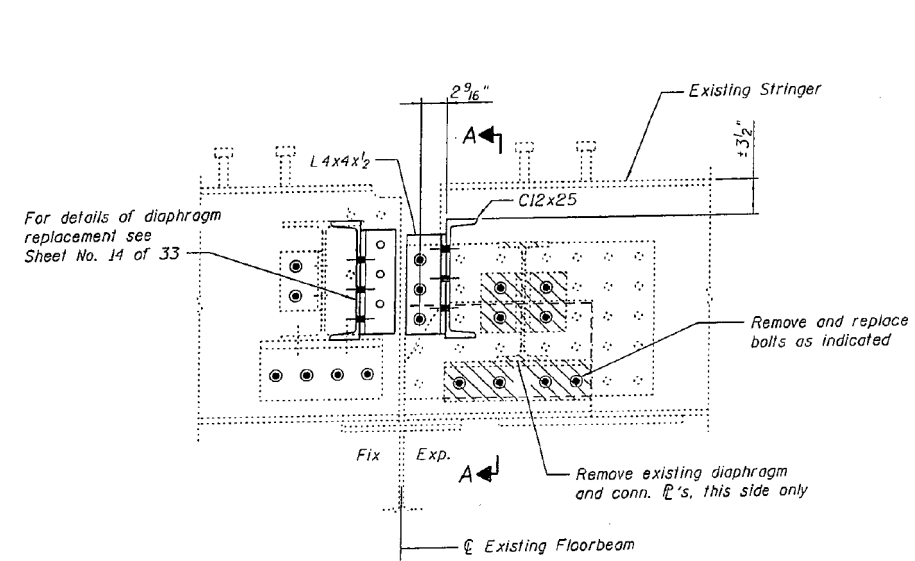


STATE OF ILLINOIS  
DEPARTMENT OF TRANSPORTATION



**DIAPHRAGM CONNECTION AT RELIEF JOINT**  
 SPAN 13 AT FLOORBEAM FB3 - STRINGER LINE 6 Shown  
 SPAN 16 AT FLOORBEAM FB5 - STRINGER LINE 6 Shown  
 SPAN 13 AT FLOORBEAM FB7 - STRINGER LINE 6 Opposite Hand  
 View Looking East

Note: Replacement fasteners shall be 3/4" high strength bolts.

\* Two hardened washers shall be required, per bolt, at diaphragm connection.

**STRINGER END REPAIR DETAILS - 4A**  
 I-80 OVER  
 MISSISSIPPI RIVER  
 STRUCTURE NO. 081-0011

DESIGNED	YSS
CHECKED	DWP
DRAWN	PRC
CHECKED	YSS

02/17/11



New Sheet

SHEET NO. 14A	F.A.I. RTE.	SECTION	COUNTY	TOTAL SHEETS	SHEET NO.
	80	(81)-1B1M-4	ROCK ISLAND		
33 SHEETS	SN 081-0011		CONTRACT NO. 64F31		
FED. ROAD DIST. NO. 7		ILLINOIS FED. AID PROJECT			

Construction Change 02/17/11 P.R.C.

DESIGNED	VHV	EXAMINED	<i>Timothy A. Daulton</i>	DATE	OCTOBER 12, 2012
CHECKED	DAB	PASSED	<i>Carl Berger</i>		
DRAWN	baliva				
CHECKED	VHV DAB				

STATE OF ILLINOIS  
DEPARTMENT OF TRANSPORTATION

FOR INFORMATION ONLY  
SN 081-0011

SHEET 31 OF 42 SHEETS

F.A. RTE.	SECTION	COUNTY	TOTAL SHEETS	SHEET NO.
80	D2 BRIDGE PAINTING 2012-2	ROCK ISLAND	46	35
ILLINOIS FED. AID PROJECT			CONTRACT NO. 64H81	