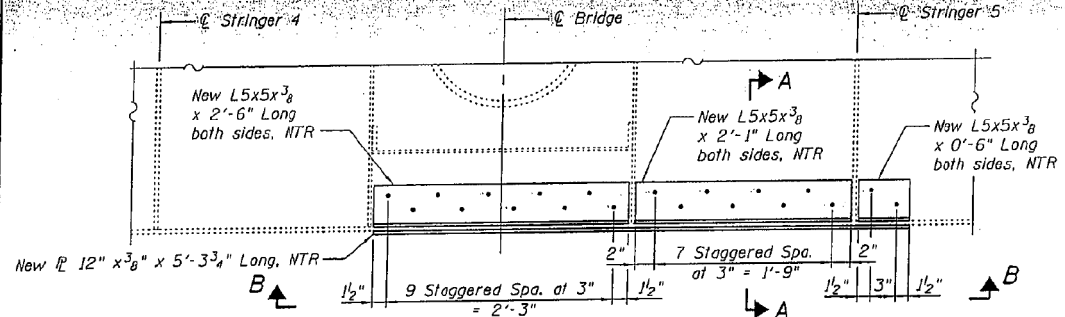
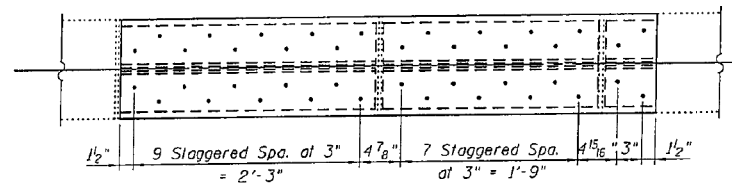


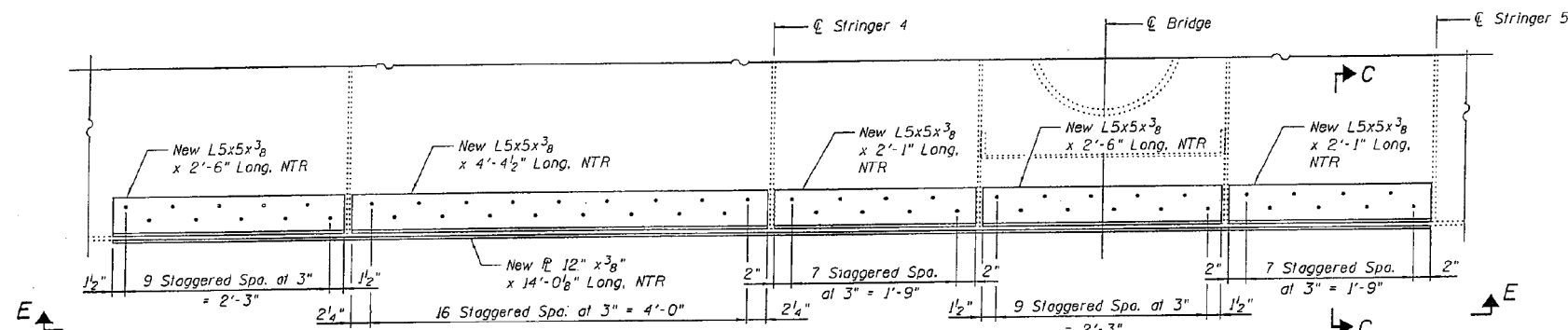
STATE OF ILLINOIS
DEPARTMENT OF TRANSPORTATION



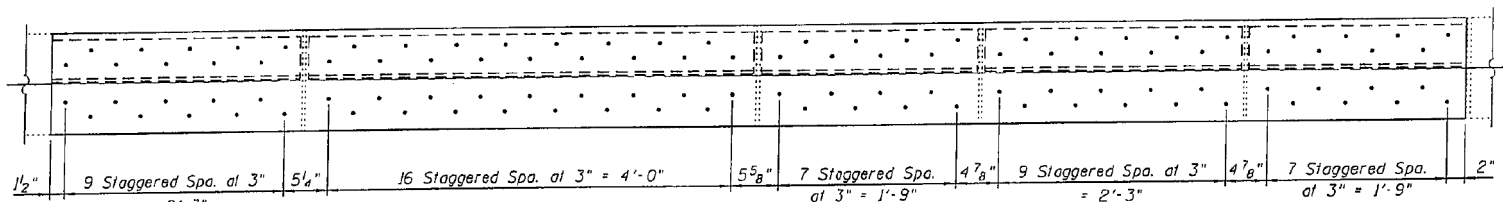
STRUCTURAL STEEL REPAIR B
SPANS 13 AND 14, FLOORBEAM 7
(Looking South)



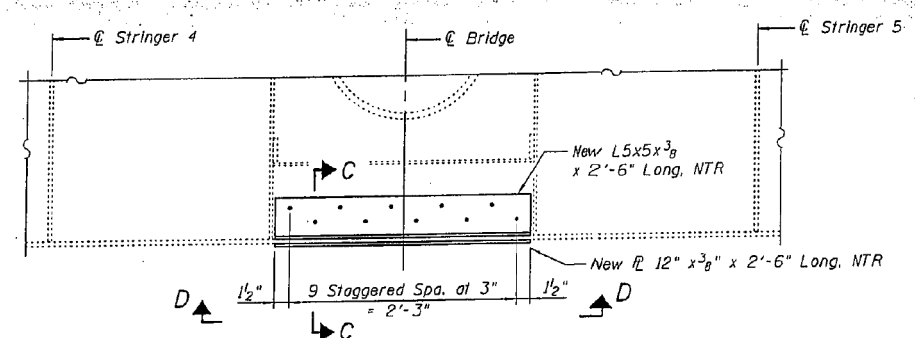
VIEW B-B



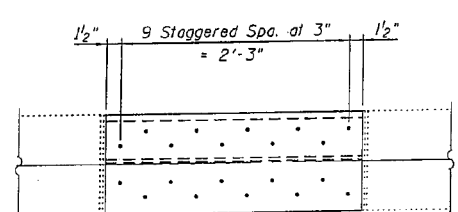
STRUCTURAL STEEL REPAIR G
SPAN 20, FLOORBEAM 1
(Looking South)



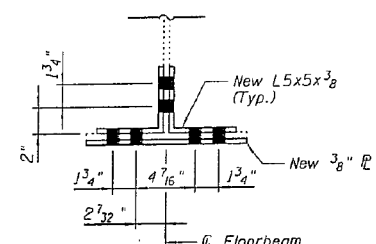
VIEW E-E



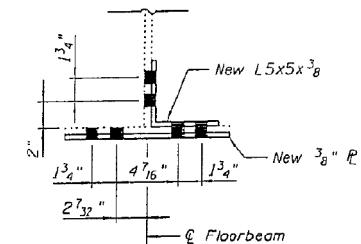
STRUCTURAL STEEL REPAIR H
SPAN 24, FLOORBEAM 4
(Looking South)



VIEW D-D



SECTION A-A



SECTION C-C

BILL OF MATERIAL

Item	Unit	Total
Structural Steel Repair	Pound	870

Notes:
Grind heels of angles as required for installation.
Field drill holes in existing floorbeams and new plates using new angles as templates.
Load carrying components designated "NTR" shall conform to the supplemental requirement for Notch Toughness, Zone 2.

MISCELLANEOUS STEEL REPAIR DETAILS - 2
I-80 OVER
MISSISSIPPI RIVER
STRUCTURE NO. 081-0011

DESIGNED RLM
CHECKED DWP
DRAWN AEC
CHECKED RLM
09/17/09



EXAMINED *Timothy A. ...* DATE - OCTOBER 12, 2012
PASSED *Carl ...*
ACTING ENGINEER OF BRIDGES AND STRUCTURES

STATE OF ILLINOIS
DEPARTMENT OF TRANSPORTATION

FOR INFORMATION ONLY
SN 081-0011
SHEET 33 OF 42 SHEETS

F.A.I. RTE.	SECTION	COUNTY	TOTAL SHEETS	SHEET NO.
80	(81-1B1M-4)	ROCK ISLAND	46	37
SN 081-0011			CONTRACT NO. 64F31	
FED. ROAD DIST. NO. 7 ILLINOIS FED. AID PROJECT				

DESIGNED VHV
CHECKED DAB
DRAWN baliva
CHECKED VHV DAB