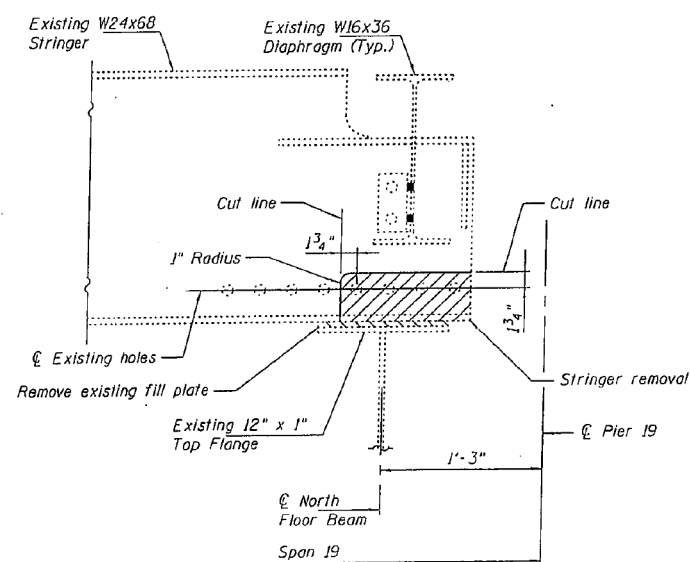
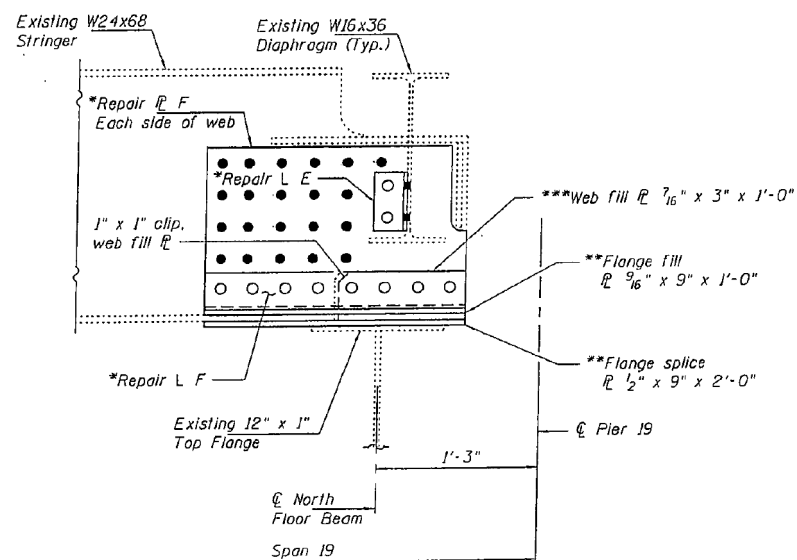


STATE OF ILLINOIS
DEPARTMENT OF TRANSPORTATION



STRUCTURAL STEEL REPAIR F MODIFICATION
STRINGER REMOVAL
Looking East at Stringer 4



STRUCTURAL STEEL REPAIR F MODIFICATION
ADDITIONAL FILL AND SPLICE PLATES
Looking East at Stringer 4

- * For repair angle and plate details, see Sheet No. 20.
All field drilled holes shall be done prior to stringer removal.
- ** Field drill holes using Repair Angle F as template.
- *** Field drill holes using Repair Plate F as template.

MISCELLANEOUS STEEL REPAIR DETAILS - 4A
I-80 OVER
MISSISSIPPI RIVER
STRUCTURE NO. 081-0011

DESIGNED	YSS
CHECKED	DWP
DRAWN	PRC
CHECKED	YSS



02/17/11

New Sheet

SHEET NO.	F.A.I. RTE.	SECTION	COUNTY	TOTAL SHEETS	SHEET NO.
SHEET NO. 20A	80	(81-18)M-4	ROCK ISLAND		
33 SHEETS		SN 081-0011	CONTRACT NO. 64F31		
FED. ROAD DIST. NO. 7 ILLINOIS FED. AID PROJECT					

Construction Change 02/17/11 P.R.C.

DESIGNED	VHV	EXAMINED	<i>Timothy A. Dill</i>	DATE	OCTOBER 12, 2012
CHECKED	DAB	PASSED	<i>Carl Berger</i>		
DRAWN	baliva				
CHECKED	VHV DAB				

STATE OF ILLINOIS
DEPARTMENT OF TRANSPORTATION

FOR INFORMATION ONLY
SN 081-0011

SHEET 36 OF 42 SHEETS

F.A.I. RTE.	SECTION	COUNTY	TOTAL SHEETS	SHEET NO.
80	D2 BRIDGE PAINTING 2012-2	ROCK ISLAND	46	40
CONTRACT NO. 64H81				
ILLINOIS FED. AID PROJECT				