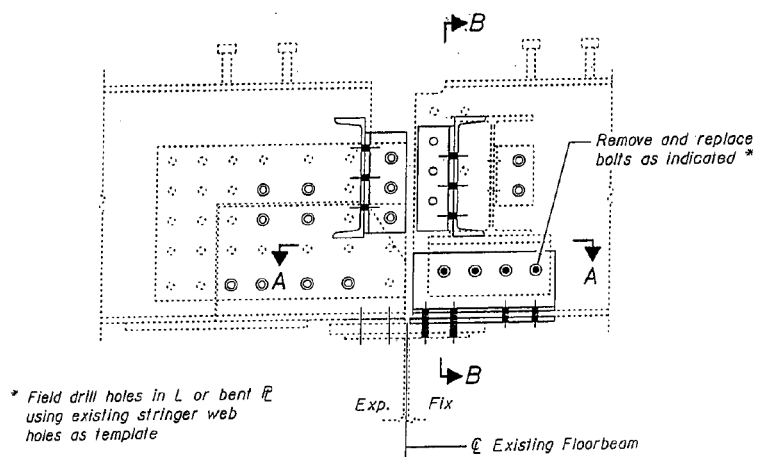
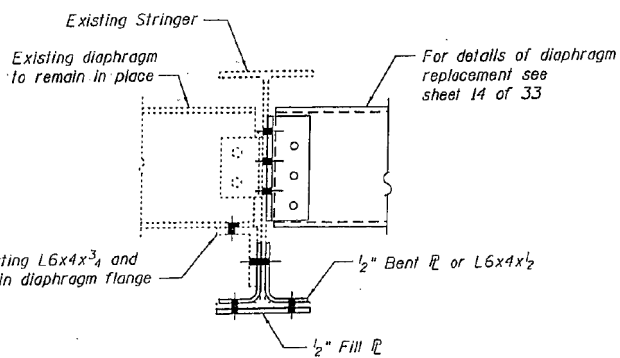


STATE OF ILLINOIS  
DEPARTMENT OF TRANSPORTATION

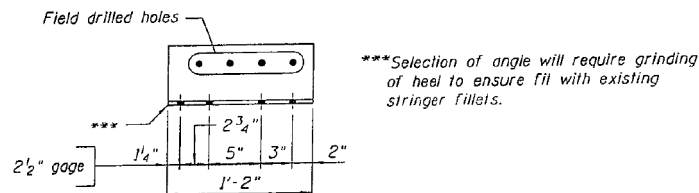


**STRUCTURAL REPAIR J**  
**SPAN 13 AT FLOORBEAM FB7 - STRINGER LINE 6**  
View Looking East



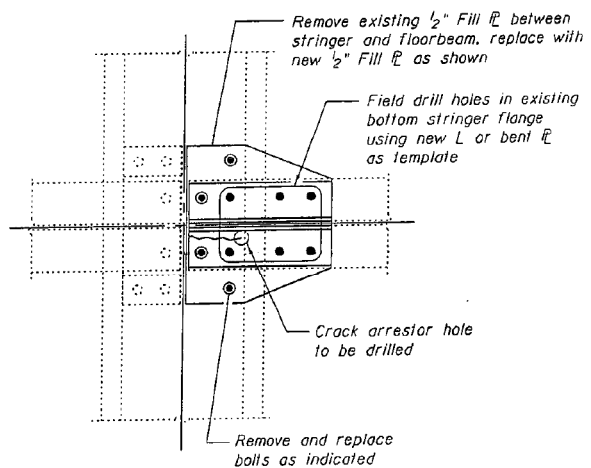
**SECTION B-B**

\*\* Provide two hardened washers per bolt.

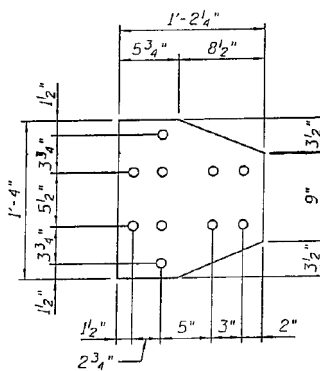


**$\frac{1}{2}$ " BENT  $\bar{L}$  OR L6x4x $\frac{1}{2}$**

Required: 1-left and 1-right



**SECTION A-A**



**$\frac{1}{2}$ " FILL  $\bar{L}$**

1 - Required

Note:  
Replacement and new fasteners shall be  $\frac{3}{4}$ "  $\phi$  high strength A325 bolts.  
Holes shall be  $\frac{1}{8}$ "  $\phi$ , except as noted.  
Drill crack arrester hole at crack tip in stringer bottom flange (per detail on sheet 20 of 33) prior to installation of repair plates.

**MISCELLANEOUS STEEL  
REPAIR DETAILS - 6**  
**I-80 OVER  
MISSISSIPPI RIVER  
STRUCTURE NO. 081-0011**

|          |     |
|----------|-----|
| DESIGNED | YSS |
| CHECKED  | DWP |
| DRAWN    | PRC |
| CHECKED  | YSS |



02/17/11

New Sheet

| SHEET NO. 2/A                                       | F.A.I. RTE. | SECTION    | COUNTY             | TOTAL SHEETS | SHEET NO. |
|---|-------------|------------|--------------------|--------------|-----------|
| 33 SHEETS   | 80          | (81-1B)M-4 | ROCK ISLAND        |              |           |
| SN 081-0011   |             |            | CONTRACT NO. 64F31 |              |           |
| FED. ROAD DIST. NO. 7   ILLINOIS   FED. AID PROJECT |             |            |                    |              |           |

Construction Change 02/17/11 P.R.C.

|          |         |          |                       |      |                  |
|----------|---------|----------|-----------------------|------|------------------|
| DESIGNED | VHV     | EXAMINED | <i>Timothy A. ...</i> | DATE | OCTOBER 12, 2012 |
| CHECKED  | DAB     | PASSED   | <i>Carl ...</i>       |      |                  |
| DRAWN    | baliva  |          |                       |      |                  |
| CHECKED  | VHV DAB |          |                       |      |                  |

STATE OF ILLINOIS  
DEPARTMENT OF TRANSPORTATION

FOR INFORMATION ONLY  
SN 081-0011

SHEET 37 OF 42 SHEETS

| F.A. RTE.                   | SECTION                   | COUNTY      | TOTAL SHEETS       | SHEET NO. |
|-----------------------------|---------------------------|-------------|--------------------|-----------|
| 80                          | D2 BRIDGE PAINTING 2012-2 | ROCK ISLAND | 46                 | 41        |
| ILLINOIS   FED. AID PROJECT |                           |             | CONTRACT NO. 64H81 |           |