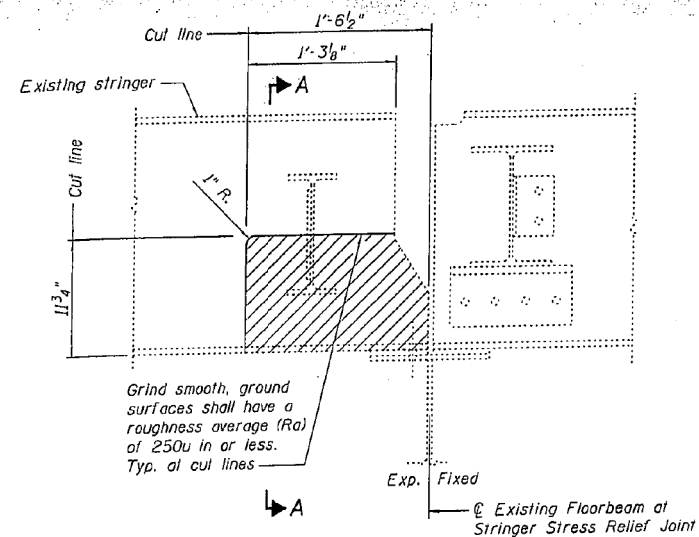
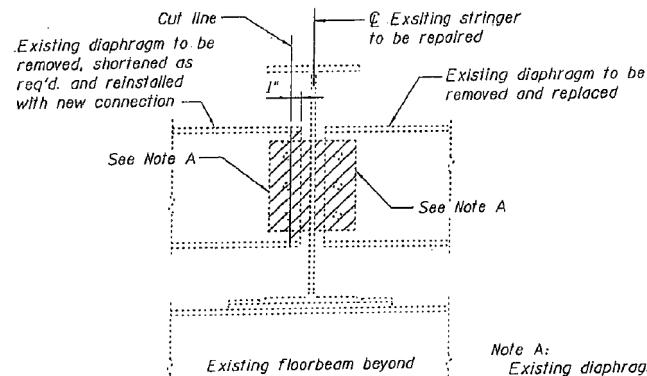


STATE OF ILLINOIS
DEPARTMENT OF TRANSPORTATION

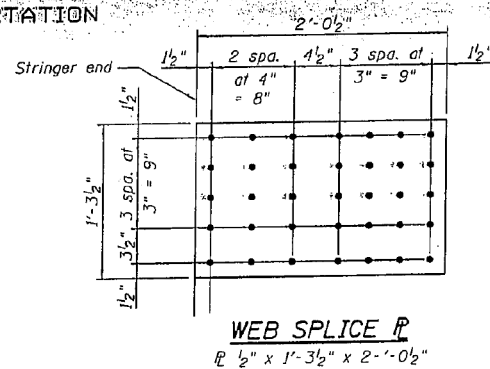


STRUCTURAL REPAIR K
TYPICAL REMOVAL ELEVATION

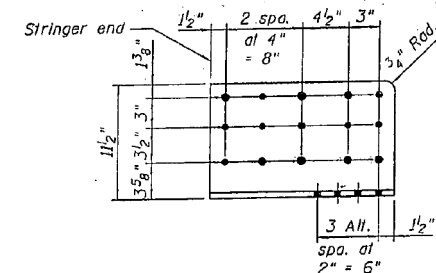


SECTION A-A

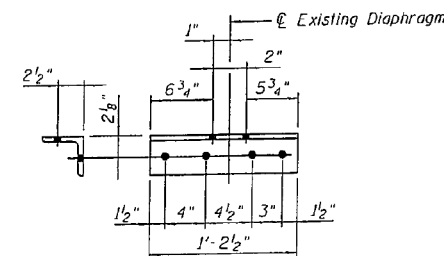
Note A:
Existing diaphragm connection \bar{R} to be removed using the air-arc method being careful not to damage the existing web of the stringer. Grind smooth and inspect using dye penetrant or magnetic particle (MT) methods



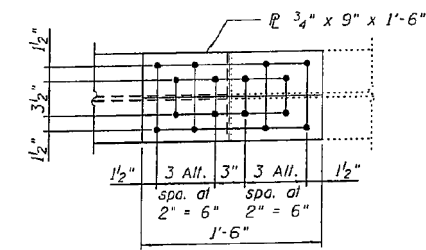
WEB SPLICE R
R 1/2" x 1'-3 1/2" x 2'-0 1/2"



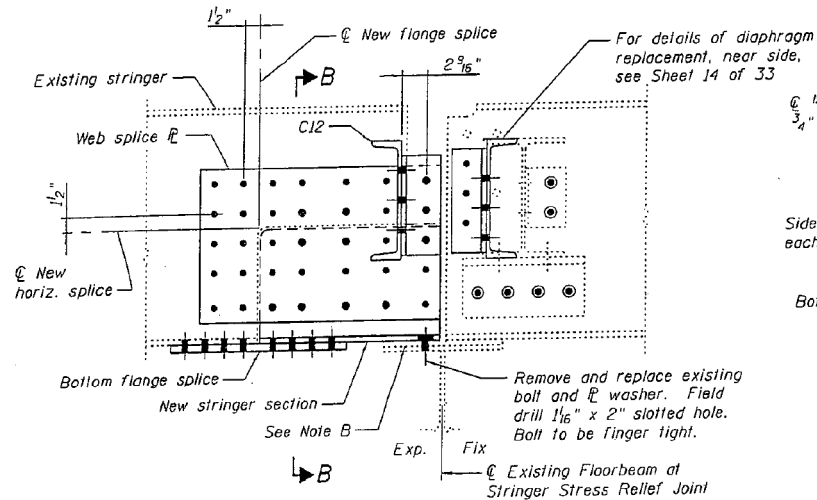
NEW STRINGER SECTION
Cut from W24x68 x 1'-6 3/8"



BOTTOM CLIP ANGLE
L 4 x 4 x 1/2" x 1'-2 1/2"

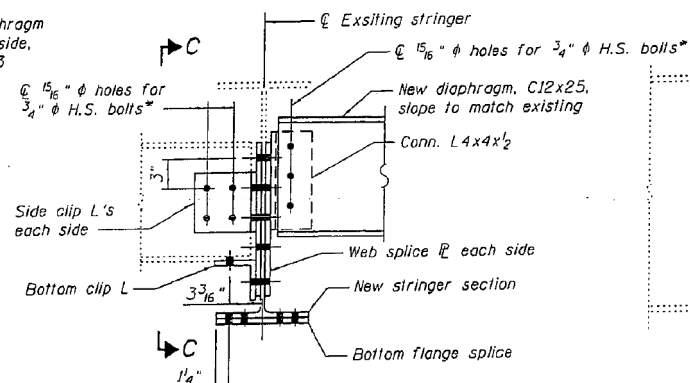


BOTTOM FLANGE SPLICE

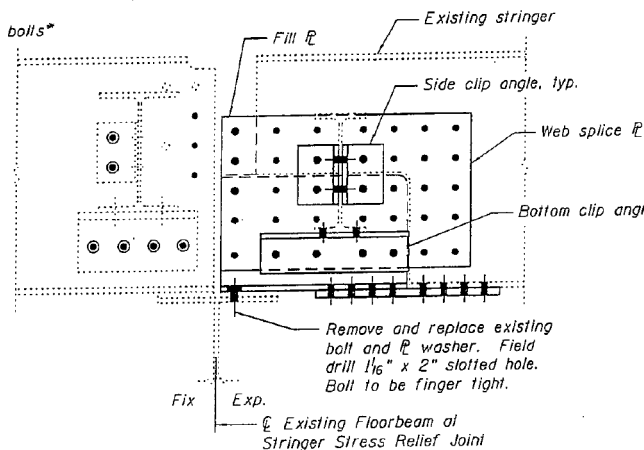


STRUCTURAL REPAIR K
TYPICAL ELEVATION

Note B:
Fill gap between existing bronze plate and top of existing floorbeam with Chockfast epoxy to fill void.



SECTION B-B



SECTION C-C

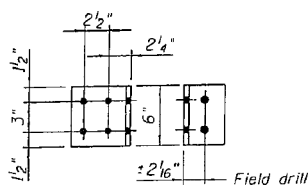
Notes:
The web surface at the modification shall be inspected using dye penetrant or Magnetic particle (MT) methods. Any crack found shall be identified and reported to the Bureau of Bridges and Structures for further disposition. The exposed steel surfaces shall be cleaned and painted using an aluminum epoxy mastic primer according to Article 506.5 of the Standard Specifications.
All work described above should be included with Structural Steel Repair.
Replacement and new fasteners shall be 7/8" ϕ H.S. A325 bolts, except as noted.

LOCATIONS

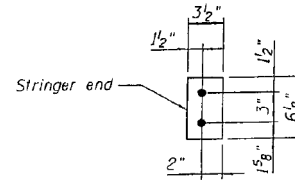
SPAN	FLOORBEAM	STRINGER
10	1	3
11	6	6

MISCELLANEOUS STEEL
REPAIR DETAILS - 7
I-80 OVER
MISSISSIPPI RIVER
STRUCTURE NO. 081-0011

DESIGNED	YSS
CHECKED	DWP
DRAWN	PRC
CHECKED	YSS



SIDE CLIP ANGLES
L 6 x 4 x 1/2" x 0'-6"



FILL R
R 7/8" x 3 1/2" x 0'-6 1/8"

1 New Sheet

SHEET NO. 218	F.A.I. RTE.	SECTION	COUNTY	TOTAL SHEETS	SHEET NO.
	80	(81-18)M-4	ROCK ISLAND		
33 SHEETS	SN 081-0011		CONTRACT NO. 64F31		
FED. ROAD DIST. NO. 7 ILLINOIS FED. AID PROJECT					

7 Construction Change 02/17/11 P.R.C.

DESIGNED	VHV	EXAMINED	Timothy A. Daulton	DATE	OCTOBER 12, 2012
CHECKED	DAB	PASSED	ACTING ENGINEER OF STRUCTURAL SERVICES		
DRAWN	baliva		ACTING ENGINEER OF BRIDGES AND STRUCTURES		
CHECKED	VHV DAB				

STATE OF ILLINOIS
DEPARTMENT OF TRANSPORTATION

FOR INFORMATION ONLY
SN 081-0011

SHEET 38 OF 42 SHEETS

F.A. RTE.	SECTION	COUNTY	TOTAL SHEETS	SHEET NO.
80	D2 BRIDGE PAINTING 2012-2	ROCK ISLAND	46	42
CONTRACT NO. 64H81				
ILLINOIS FED. AID PROJECT				