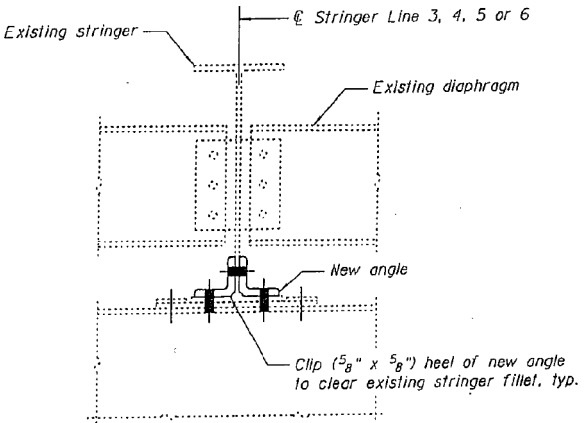
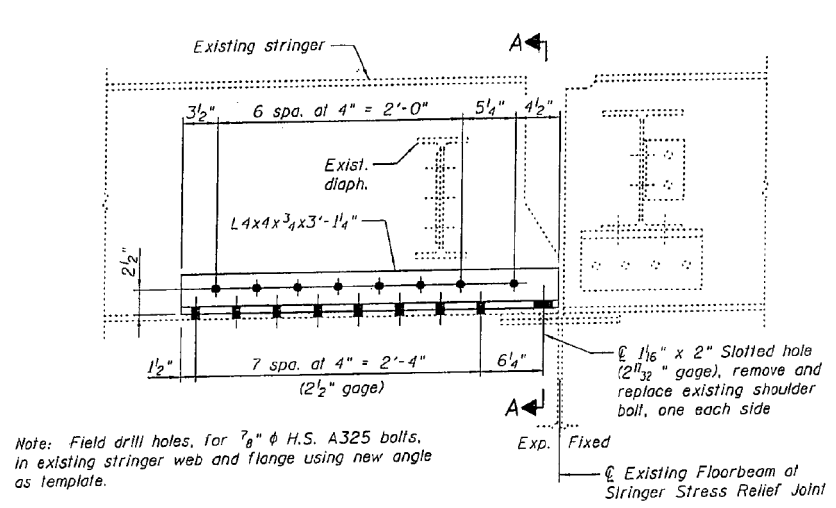
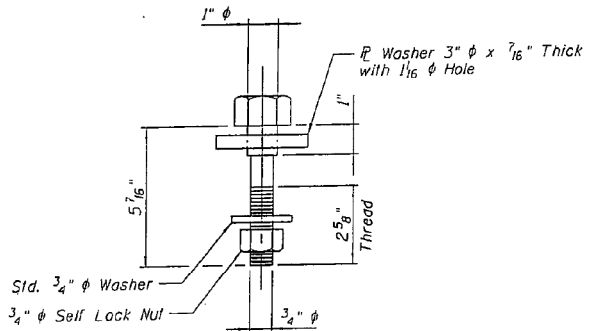


STATE OF ILLINOIS
DEPARTMENT OF TRANSPORTATION



SECTION A-A

STRUCTURAL STEEL REPAIR 0
STRINGER STRENGTHENING AT RELIEF JOINT



SHOULDER BOLT DETAIL

Note:
Install shoulder bolts with 1/16" gap between bolt head and plate washer.

STRENGTHENING LOCATIONS

SPAN	FLOORBEAM	STRINGER
11	6	4
13	3	4
14	11	6
14	18	6
15	4	3
17	1	3
17	1	6

Notes:
Open holes in new angle to be 1 5/16" diameter, unless noted otherwise.
Threads for new 7/8" ϕ H.S. A325 bolts shall be excluded from the shear plane.

MISCELLANEOUS STEEL
REPAIR DETAILS - 10
I-80 OVER
MISSISSIPPI RIVER
STRUCTURE NO. 081-0011

DESIGNED	YSS
CHECKED	DWP
DRAWN	PRC
CHECKED	YSS
02/17/11	



1 New Steel

SHEET NO. 2/E	F.A.I. RTE.	SECTION	COUNTY	TOTAL SHEETS	SHEET NO.
	80	(81)-1B/M-4	ROCK ISLAND		
	SN 081-0011		CONTRACT NO. 64F31		
33 SHEETS	FED. ROAD DIST. NO. 7 ILLINOIS FED. AID PROJECT				

1 Construction Change 02/17/11 P.R.C.

DESIGNED	VHV	EXAMINED	Timothy A. Daulton	DATE	OCTOBER 12, 2012
CHECKED	DAB	PASSED	ACTING ENGINEER OF STRUCTURAL SERVICES		
DRAWN	baliva		ACTING ENGINEER OF BRIDGES AND STRUCTURES		
CHECKED	VHV DAB				

STATE OF ILLINOIS
DEPARTMENT OF TRANSPORTATION

FOR INFORMATION ONLY
SN 081-0011

SHEET 41 OF 42 SHEETS

F.A. RTE.	SECTION	COUNTY	TOTAL SHEETS	SHEET NO.
80	D2 BRIDGE PAINTING 2012-2	ROCK ISLAND	46	45
CONTRACT NO. 64H81				
ILLINOIS FED. AID PROJECT				