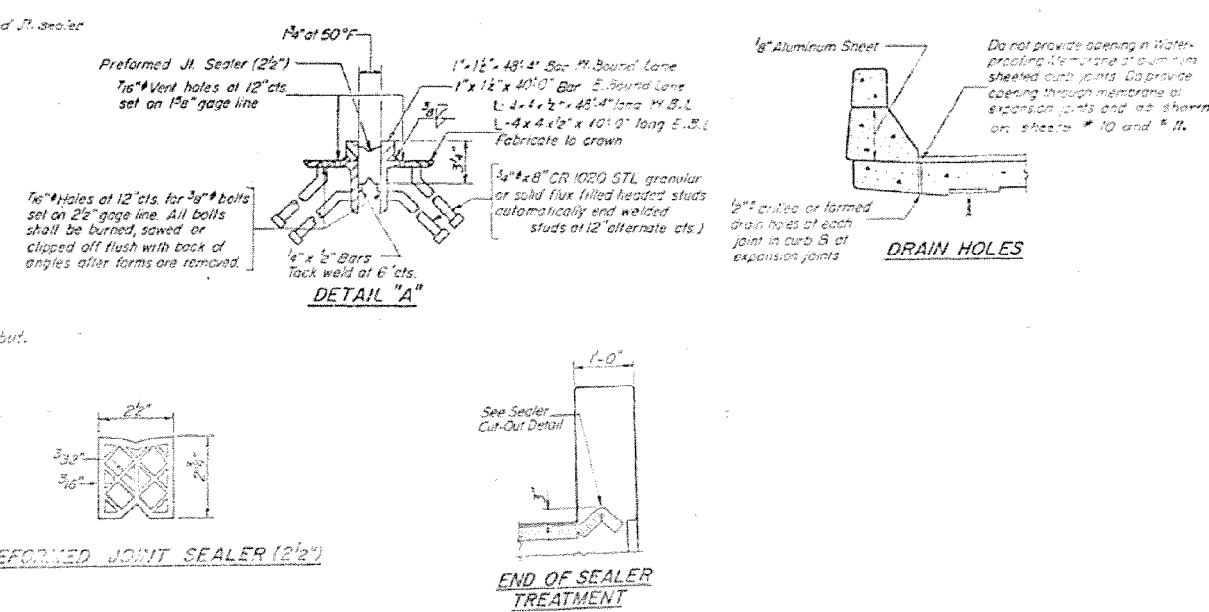
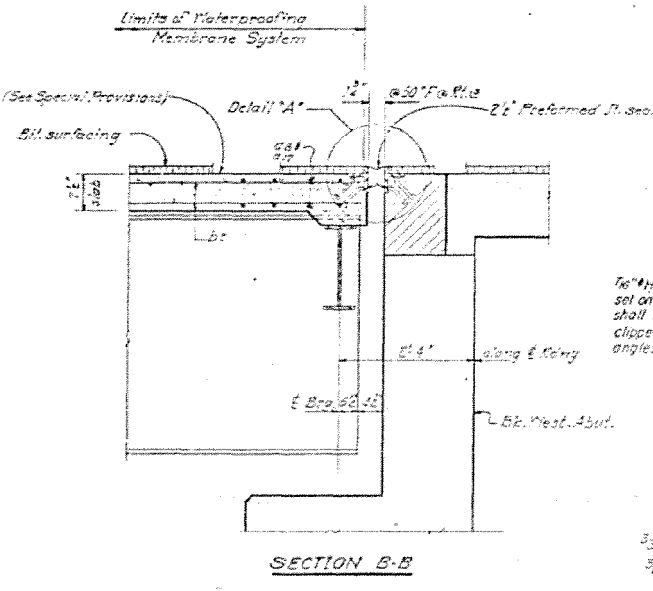
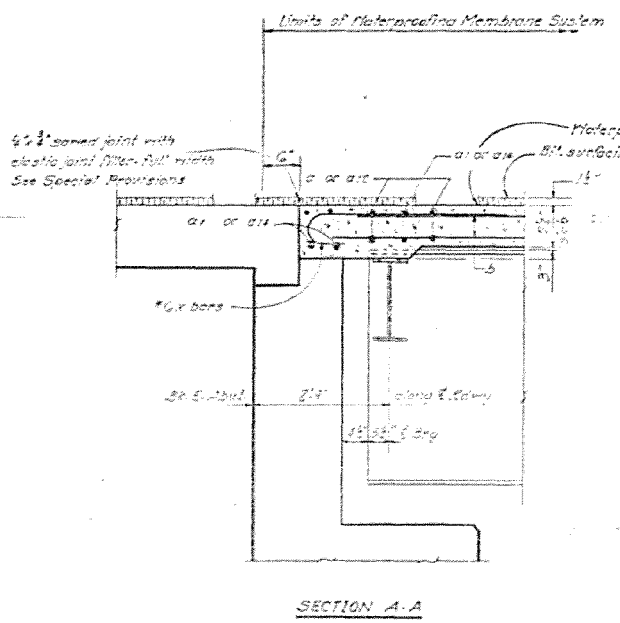
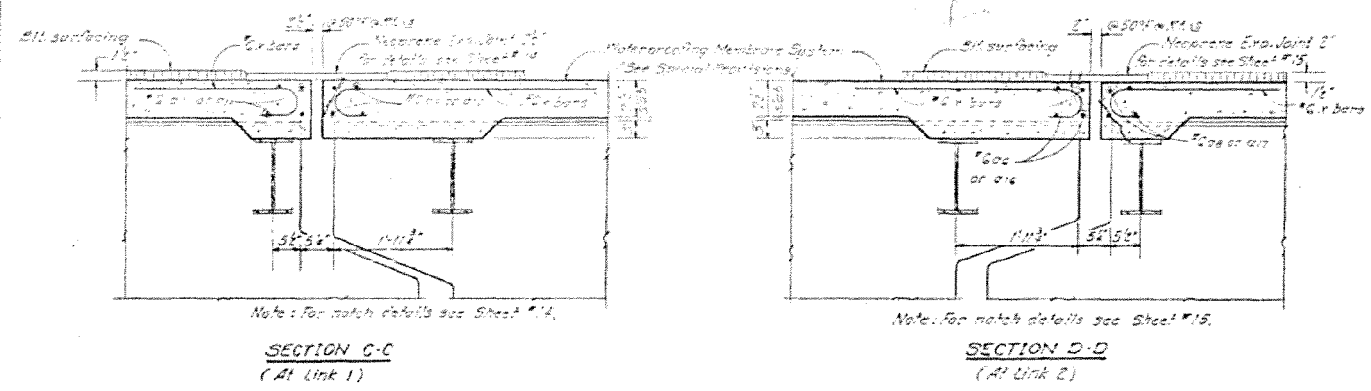


STATE OF ILLINOIS
DEPARTMENT OF TRANSPORTATION

ROUTE NO.	SECTION	COUNTY	TOTAL SHEETS	SHEET NO.
1-415	23-50	MACON	23	15
SHEET NO. 15 23 SHEETS				



DESIGNED	EXAMINED	DATE	12-11-1975
CHECKED	PASSED	BY STATE OF ILLINOIS AND TRAFFIC ENGINEERS	
DRAWN	APPROVED	BY STATE OF ILLINOIS	
CHECKED		BY STATE OF ILLINOIS	

SUPERSTRUCTURE DETAILS
 F.A. RT. #13 SEC. 23-50 H.V.B.-1
 MACON COUNTY
 STATION 235+50.78