

GENERAL NOTES

1 ILLINOIS STATE LAW REQUIRES A 48-HOUR NOTICE BE GIVEN TO ALL UTILITIES BEFORE DIGGING. FIELD MARKING OF FACILITIES MAY BE OBTAINED BY CONTACTING J.U.L.I.E. OR FOR NON-MEMBERS, THE UTILITY COMPANY DIRECTLY. AGENCIES KNOWN TO HAVE FACILITIES WITHIN THE PROJECT AREA ARE AS FOLLOWS:

- AT&T ILLINOIS
- BUCKEYE PARTNERS L.P.--WOOD RIVER PIPELINE
- CHARTER COMMUNICATIONS, INC.
- NORTHEAST CENTRAL COUNTY PUBLIC WATER DISTRICT
- SOUTHWESTERN ELECTRIC COOPERATIVE, INC.

MEMBERS OF J.U.L.I.E. CALL TOLL FREE (800)892-0123 OR 811 AND ARE INDICATED BY AN *. NON-J.U.L.I.E. MEMBERS MUST BE NOTIFIED INDIVIDUALLY.

- 2 THE CONTRACTOR AND THE ENGINEER SHALL BE AWARE THAT NO SURVEY WAS PERFORMED FOR THIS PROJECT. THE STATIONING AND TOPOGRAPHY SHOWN IN THE PLANS WAS CREATED USING MICROFILM AND FIELD MEASUREMENTS. BOTH SHALL BE ASSUMED TO BE APPROXIMATE. THE CONTRACTOR SHALL VERIFY DIMENSIONS AND CONDITIONS IN THE FIELD PRIOR TO CONSTRUCTION AND ORDERING OF MATERIALS.
- 3 A QUANTITY OF 1537.5 FOOT OF "TEMPORARY PAVEMENT MARKING - LINE 6" HAS BEEN INCLUDED IN THE PLANS FOR PAINTING THE BOTTOM 6" OF THE TEMPORARY CONCRETE BARRIER.
- 4 THE PROPOSED PAVEMENT MARKING SHALL MATCH THE LOCATIONS OF THE EXISTING PAVEMENT MARKING, AS DIRECTED BY THE ENGINEER.
- 5 ACCESS SHALL BE MAINTAINED TO ALL PROPERTIES UNLESS OTHERWISE NOTED IN THE PLANS.
- 6 ALL TURF AREAS DISTURBED BY THE CONTRACTOR SHALL BE SEEDED WITH THE APPROPRIATE EROSION CONTROL AS DIRECTED BY THE ENGINEER AT THE CONTRACTOR'S EXPENSE.
- 7 THE FOLLOWING MIXTURE REQUIREMENTS ARE APPLICABLE FOR THIS CONTRACT:

MIXTURE USE	WIDENING	SURFACE
AC/PG	PG 64-22	PG 64-22
RAP % (MAX)	SEE SPEC.	SEE SPEC.
DESIGN AIR VOIDS	4.0% @ Ndes=70	4.0% @ Ndes=70
MIX COMPOSITION		
(GRADATION MIXTURE)	IL 19.0	IL 9.5
FRICTION AGG	MIXTURE "B"	MIXTURE "C"

••TOP LIFT SHOULDERS - DESIGN THIS MIX AT 2.0% VOIDS AND ADD ASPHALT TO REDUCE VOIDS TO 1.5%.

PLAN QUANTITIES FOR HMA SURFACE COURSE ITEMS ARE CALCULATED USING A UNIT WEIGHT OF 112 LB/SQ YD/ IN.

- 8 THE DEPARTMENT STRONGLY ENCOURAGES THE PRIME CONTRACTOR AND THEIR APPROVED SUB-CONTRACTORS TO HIRE MINORITY, WOMEN AND DISADVANTAGED INDIVIDUALS FROM ITS FEDERALLY FUNDED HIGHWAY CONSTRUCTION CAREERS TRAINING PROGRAM (HCCTP) TO HELP MEET WORKFORCE AND TRAINEE GOALS. THIS PROGRAM IS TRAINING MINORITIES, WOMEN AND DISADVANTAGED INDIVIDUALS IN HIGHWAY CONSTRUCTION-RELATED SKILLS, E.G., MATH FOR THE TRADES, JOB READINESS, TECHNICAL SKILLS COURSEWORK (CARPENTRY, CONCRETE FLATWORK, BLUEPRINT READING, SITE PLANS, SITE WORK, TOOLS USE, ETC.) AND OSHA 10 HOUR CERTIFICATION, TO PREPARE THEM FOR A CAREER IN THE HIGHWAY CONSTRUCTION TRADES. GRADUATES ARE WELL-TRAINED AND READY TO BECOME PRODUCTIVE ENTRY-LEVEL CONSTRUCTION WORKERS. CONTACT THE DISTRICT 8 EEO OFFICE AT 618-346-3360 AND/OR THE HCCTP COORDINATOR AT 618-874-6528 TO LEARN MORE ABOUT THE PROGRAM AND FOR ASSISTANCE IN MEETING WORKFORCE AND TRAINEE GOALS.
- 9 ANY EXCAVATION OR DROP-OFF OF MORE THAN 3" AT THE EDGE OF PAVEMENT SHALL BE PROTECTED WITH EXTENDED LEG BARRICADES AND APPROPRIATE LIGHTING.
- 10 CHANGEABLE MESSAGE BOARDS SHALL BE REQUIRED FOR THIS PROJECT. THEY SHALL BE PLACED ONE WEEK PRIOR TO ANY LANE CLOSURE. THE CHANGEABLE MESSAGE BOARDS SHALL BE PLACED AS DIRECTED BY THE ENGINEER.

INDEX OF SHEETS

- 1 COVER SHEET
- 2 GENERAL NOTES, INDEX OF SHEETS, STANDARDS AND COMMITMENTS
- 3-6 SUMMARY OF QUANTITIES
- 7 SCHEDULES
- 8-9 TYPICAL SECTIONS
- 10 PRE-STAGE 1 WIDENING
- 11 PRE-STAGE 2 WIDENING
- 12 TRAFFIC CONTROL DETAILS
- 13 DETAILS
- 14-29 STRUCTURE PLANS

COMMITMENTS

NONE

STANDARDS

- 000001-06
- 001001-02
- 001006
- 635006-03
- 635011-02
- 701101-03
- 701411-08
- 701421-05
- 701422-05
- 701423-06
- 701426-05
- 701456-02
- 701901-02
- 704001-07
- 780001-03
- 781001-03

REVISI¹ REVISION SHEET 1-4-13

FILE NAME *	USER NAME * #USER*	DESIGNED -	REVISED -	STATE OF ILLINOIS DEPARTMENT OF TRANSPORTATION	GENERAL NOTES, INDEX OF SHEETS, STANDARDS AND COMMITMENTS	F.A.P. RTE.	SECTION	COUNTY	TOTAL SHEETS	SHEET NO.
#FILE#	DRAWN -	REVISED -	789			125-1HB-1	MADISON	29	2	
PLOT SCALE * #SCALE*	CHECKED -	REVISED -	CONTRACT NO. 76F54							
PLOT DATE * #DATE*	DATE -	REVISED -	ILLINOIS FED. AID PROJECT							
					SCALE: NONE	SHEET 1 OF 1 SHEETS		STA.	TO STA.	

SUMMARY OF QUANTITIES

100% STATE

SUMMARY OF QUANTITIES			URBAN	CONSTRUCTION TYPE CODE		
CODE NO	ITEM	UNIT	TOTAL QUANTITIES	0004	0014	0014
35501319	HOT-MIX ASPHALT BASE COURSE, 8 3/4"	SQ YD	212	212		
40600200	BITUMINOUS MATERIALS (PRIME COAT)	TON	0.5	0.5		
40600300	AGGREGATE (PRIME COAT)	TON	3	3		
40600982	HOT-MIX ASPHALT SURFACE REMOVAL - BUTT JOINT	SQ YD	747	747		
40600990	TEMPORARY RAMP	SQ YD	332	332		
40603085	HOT-MIX ASPHALT BINDER COURSE, IL 19.0, N70	TON	<del style="text-align: center;">91	<del style="text-align: center;">91		
40603315	HOT-MIX ASPHALT SURFACE COURSE, MIX "C", N70	TON	410	204	106	100
44004250	PAVED SHOULDER REMOVAL	SQ YD	212	212		
48102100	AGGREGATE WEDGE SHOULDER, TYPE B	TON	21	21		
48203100	HOT-MIX ASPHALT SHOULDERS	TON	72	72		
50102400	CONCRETE REMOVAL	CU YD	62.3	33.9	28.4	
50157300	PROTECTIVE SHIELD	SQ YD	785	411	374	
50300255	CONCRETE SUPERSTRUCTURE	CU YD	69	38.7	30.3	



⚠ REVISSED
1-4-13

13

FILE NAME =	USER NAME = chollandesko	DESIGNED -	REVISED -	STATE OF ILLINOIS DEPARTMENT OF TRANSPORTATION	SUMMARY OF QUANTITIES	F.A.P. RTE.	SECTION	COUNTY	TOTAL SHEETS	SHEET NO.
c:\pwwork\pwwork\chollandesko\0292482	0876F54-shc-500.dgn	DRAWN -	REVISED -			789	125-IHB-1	MADISON	29	3
	PLOT SCALE = 1/8"=1'-0"	CHECKED -	REVISED -							
	PLOT DATE = 11/2/2012	DATE -	REVISED -							
					SCALE: NONE	SHEET 1 OF 3 SHEETS		STA.	TO STA.	
ILLINOIS FED. AID PROJECT CONTRACT NO. 76F54										

SUMMARY OF QUANTITIES

100% STATE

SUMMARY OF QUANTITIES			URBAN TOTAL QUANTITIES	CONSTRUCTION TYPE CODE		
CODE NO	ITEM	UNIT		0004	0014	0014
50300300	PROTECTIVE COAT	SQ YD	394		202	192
50800205	REINFORCEMENT BARS, EPOXY COATED	POUND	4500		2430	2070
50800515	BAR SPLICERS	EACH	88		44	44
52000110	PREFORMED JOINT STRIP SEAL	FOOT	180		94	86
58100200	WATERPROOFING MEMBRANE SYSTEM	SQ YD	1525		784	741
59300100	CONTROLLED LOW-STRENGTH MATERIAL	CU YD	149		149	
67000400	ENGINEER FIELD OFFICE, TYPE A	CAL MO	5	5		
67100100	MOBILIZATION	L SUM	1	0.34	0.33	0.33
70100310	TRAFFIC CONTROL AND PROTECTION, STANDARD 701421	L SUM	1	0.34	0.33	0.33
70100320	TRAFFIC CONTROL AND PROTECTION, STANDARD 701422	L SUM	1	1		
70100325	TRAFFIC CONTROL AND PROTECTION, STANDARD 701423	EACH	2		1	1
70100825	TRAFFIC CONTROL AND PROTECTION, STANDARD 701426	L SUM	1	1		
70100800	CHANGEABLE MESSAGE SIGN	CAL MO	2	2		
70100420	TRAFFIC CONTROL AND PROTECTION, STANDARD 701411	EACH	1		1	
70300100	SHORT TERM PAVEMENT MARKING	FOOT	1080	1080		

1

1

1 REVISED
1-4-13

12

SUMMARY OF QUANTITIES

100% STATE

SUMMARY OF QUANTITIES			URBAN TOTAL QUANTITIES	CONSTRUCTION TYPE CODE		
CODE NO	ITEM	UNIT		0004	0014	0014
70300220	TEMPORARY PAVEMENT MARKING - LINE 4"	FOOT	8852	8852		
70300240	TEMPORARY PAVEMENT MARKING - LINE 6"	FOOT	1537.5	1537.5		
70301000	WORK ZONE PAVEMENT MARKING REMOVAL	SQ FT	3,311	3,311		
70400100	TEMPORARY CONCRETE BARRIER	FOOT	775	775		
70400200	RELOCATE TEMPORARY CONCRETE BARRIER	FOOT	762.5	762.5		
70600250	IMPACT ATTENUATORS, TEMPORARY (NON-REDIRECTIVE), TEST LEVEL 3	EACH	2	1	1	
70600350	IMPACT ATTENUATORS, RELOCATE (NON-REDIRECTIVE), TEST LEVEL 3	EACH	2	1	1	
* 78000200	THERMOPLASTIC PAVEMENT MARKING - LINE 4"	FOOT	8852	8852		
* 78100100	RAISED REFLECTIVE PAVEMENT MARKER	EACH	20	20		
* 78200410	GUARDRAIL MARKERS, TYPE A	EACH	12	6	6	
* 78200430	GUARDRAIL MARKERS, TYPE C	EACH	12	6	6	
78300100	PAVEMENT MARKING REMOVAL	SQ FT	2951	2951		

△ REVISED
1-4-13

* SPECIALTY ITEM

FILE NAME =	USER NAME = chellandeske	DESIGNED -	REVISED -
ci:\pw\work\pwidot\chellandeske\0212482\0876F54.sht-S00.dgn		DRAWN -	REVISED -
	PLT SCALE = 1/8"=1'-0" / in.	CHECKED -	REVISED -
	PLT DATE = 11/2/2012	DATE -	REVISED -

**STATE OF ILLINOIS
DEPARTMENT OF TRANSPORTATION**

SUMMARY OF QUANTITIES

SCALE: NONE SHEET 3 OF 3 SHEETS STA. TO STA.

F.A.P. RTE.	SECTION	COUNTY	TOTAL SHEETS	SHEET NO.
789	125-IH8-I	MADISON	29	5
CONTRACT NO. 76F54				

ILLINOIS FED. AID PROJECT

PAVING SCHEDULE									
STATION			BITUMINOUS MATERIALS (PRIME COAT)	AGGREGATE (PRIME COAT)	HOT-MIX ASPHALT SURFACE COURSE, MIX "C", N70	HOT-MIX ASPHALT SHOULDERS	AGGREGATE WEDGE SHOULDER, TYPE B		
			TON	TON	TON	TON	TON		
EB	52+84	TO 53+62	0.11	0.50	47.9	16.99	5.16		
EB	53+62	TO 53+67				1.09			
EB	55+44	TO 55+49				16.33			
EB	55+49	TO 56+35	0.12	0.55	50.9	1.09	5.66		
WB	52+90	TO 53+65	0.14	0.63	58.4	1.09	4.98		
WB	53+65	TO 53+70				18.73			
WB	55+40	TO 55+45				1.04			
WB	55+45	TO 56+20	0.11	0.50	46.7	15.56	4.98		
TOTAL			0.5	3.0	204	72	21		

STAGING PAVING SCHEDULE								
STATION				HOT-MIX ASPHALT BASE COURSE 8 3/4"	PAVED SHOULDER REMOVAL			
				SQ YD	SQ YD			
STAGE 1								
EB	53+00	TO	53+65	57.78	57.78			
WB	55+39	TO	56+00	47.44	47.44			
EB	55+44	TO	55+84	35.56	35.56			
STAGE 2								
EB	53+00	TO	53+67	44.67	44.67			
EB	55+45	TO	55+85	26.67	26.67			
TOTAL				212	212			

STAGING SCHEDULE						
STAGE	TEMPORARY CONCRETE BARRIER	RELOCATE TEMPORARY CONCRETE BARRIER	IMPACT ATTENUATORS TEMPORARY (NON-REDIRECTIVE), TEST LEVEL 3	IMPACT ATTENUATORS RELOCATE (NON-REDIRECTIVE), TEST LEVEL 3	TEMPORARY PAVEMENT MARKING LINE - 6"	
	FOOT	FOOT	EACH	EACH	FOOT	
STAGE I	775		2		775	
STAGE II		762.5		2	762.5	
TOTAL	775	762.5	2	2	1537.5	

HOT-MIX ASPHALT SURFACE REMOVAL - BUTT JOINT				
LOCATION	STATION TO	STATION	SURFACE	
			SQ YD	
EAST BOUND WEST END	52+84.00	TO 53+25.00	173.1	
EAST BOUND EAST END	55+94.00	TO 56+35.00	173.1	
WEST BOUND WEST END	52+90.00	TO 53+30.00	222.2	
WEST BOUND EAST END	55+80.00	TO 56+20.00	177.8	
SUB-TOTAL			746.2	
TOTAL			747	

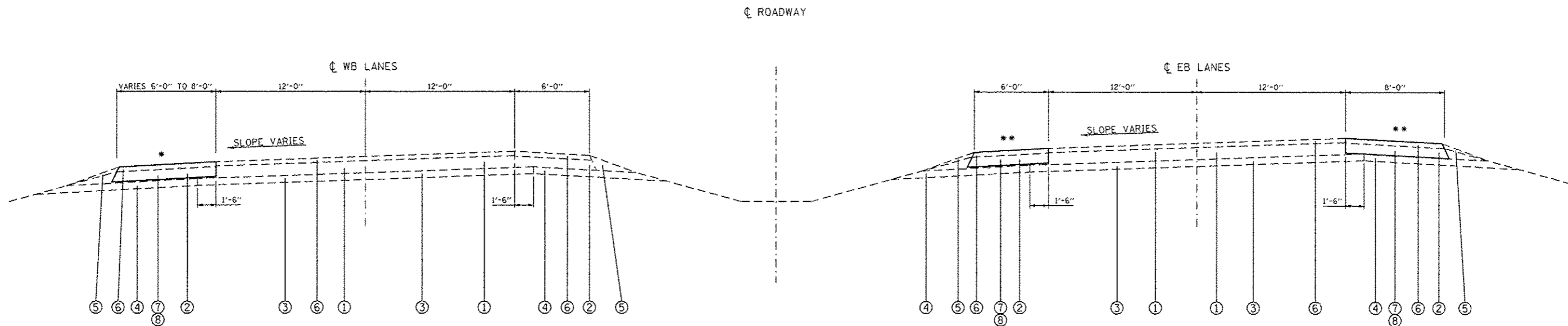
PAVEMENT MARKING SCHEDULE																				
	THERMOPLASTIC PAVEMENT MARKING			TEMPORARY PAVEMENT MARKING			WORK ZONE PAVEMENT MARKING REMOVAL	RAISED REFLECTIVE PAVEMENT MARKER	RAISED REFLECTIVE PAVEMENT MARKER REM	SHORT TERM PAVEMENT MARKING	GUARDRAIL MARKERS TYPE A	GUARDRAIL MARKERS TYPE C								
	EDGE LINE SOLID 4" WHITE	EDGE LINE SOLID 4" YELLOW	CENTERLINE SKIP-DASH 4" WHITE	EDGE LINE SOLID 4" WHITE	EDGE LINE SOLID 4" YELLOW	CENTERLINE SKIP-DASH 4" WHITE							SO FT	EACH	EACH	FOOT	EACH	EACH		
	FOOT	FOOT	FOOT	FOOT	FOOT	FOOT														
EB																				
STA	35+78	TO	STA 55+44	1966.0	1966.0	491.5	1966.00	1966.00	491.50	1654.5	10	10	540	6	6					
WB																				
STA	53+70	TO	STA 73+38	1968.0	1968.0	492.0	1968.00	1968.00	492.00	1656	10	10	540	6	6					
SUB-TOTAL				3934.0	3934.0	983.5	3934.0	3934.0	983.5	3310.5	20	20	1080	12	12					
GRAND TOTAL				8,852			8,852			3311	20	20	1080	12	12					

NOTE: GUARDRAIL MARKERS TYPE A AND TYPE C ARE TO BE INSTALLED ON THE PARAPET WALLS OF THE STRUCTURES.

TEMPORARY RAMP SCHEDULE					
LOCATION	WIDTH FOOT	LENGTH FOOT	TEMPORARY RAMP		
			SQ YD		
EAST BOUND STAGE 1 WEST END OF STRUCTURE					
STA	52+84	18.583	5	11	
STA	53+62	18.583	8	17	
STA	53+70	18.583	8	17	
EAST BOUND STAGE 1 EAST END OF STRUCTURE					
STA	55+41	18.583	8	17	
STA	55+49	18.583	8	17	
STA	56+35	18.583	5	11	
EAST BOUND STAGE 2 WEST END OF STRUCTURE					
STA	52+84	14.083	5	8	
STA	53+62	14.083	8	13	
STA	53+70	14.083	8	13	
EAST BOUND STAGE 2 EAST END OF STRUCTURE					
STA	55+41	14.083	8	13	
STA	55+49	14.083	8	13	
STA	56+35	14.083	5	8	
WEST BOUND STAGE 1 WEST END OF STRUCTURE					
STA	52+90	24.771	5	14	
STA	53+65	24.771	8	23	
STA	53+73	24.771	8	23	
WEST BOUND STAGE 1 EAST END OF STRUCTURE					
STA	55+37	16.771	8	15	
STA	55+45	16.771	8	15	
STA	55+20	16.771	5	10	
WEST BOUND STAGE 2 WEST END OF STRUCTURE					
STA	52+90	14.792	5	9	
STA	53+65	14.792	8	14	
STA	53+73	14.792	8	14	
WEST BOUND STAGE 2 EAST END OF STRUCTURE					
STA	55+37	14.792	8	14	
STA	55+45	14.792	8	14	
STA	55+20	14.792	5	9	
TOTAL				332	

1 REVISED SHEET 1-4-13

FILE NAME :	USER NAME : #USER#	DESIGNED -	REVISED -	STATE OF ILLINOIS DEPARTMENT OF TRANSPORTATION	SCHEDULES	F.A.P. R.T.E.	SECTION	COUNTY	TOTAL SHEETS	SHEET NO.	
#FILE#		DRAWN -	REVISED -			789	125-1HG-1	MADISON	29	7	
		CHECKED -	REVISED -			SCALE: NONE		SHEET 1 OF 1 SHEETS		CONTRACT NO. 76F54	
		DATE -	REVISED -			STA. TO STA.		ILLINOIS FED. AID PROJECT			



STATION #30+96 TO STATION #81+37

*WB
RT - STA. #55+39 TO STA. #55+98

**EB
LT - STA. #53+00 TO STA. #53+65
STA. #55+45 TO STA. #55+84
RT - STA. #53+00 TO STA. #53+67
STA. #55+45 TO STA. #55+85

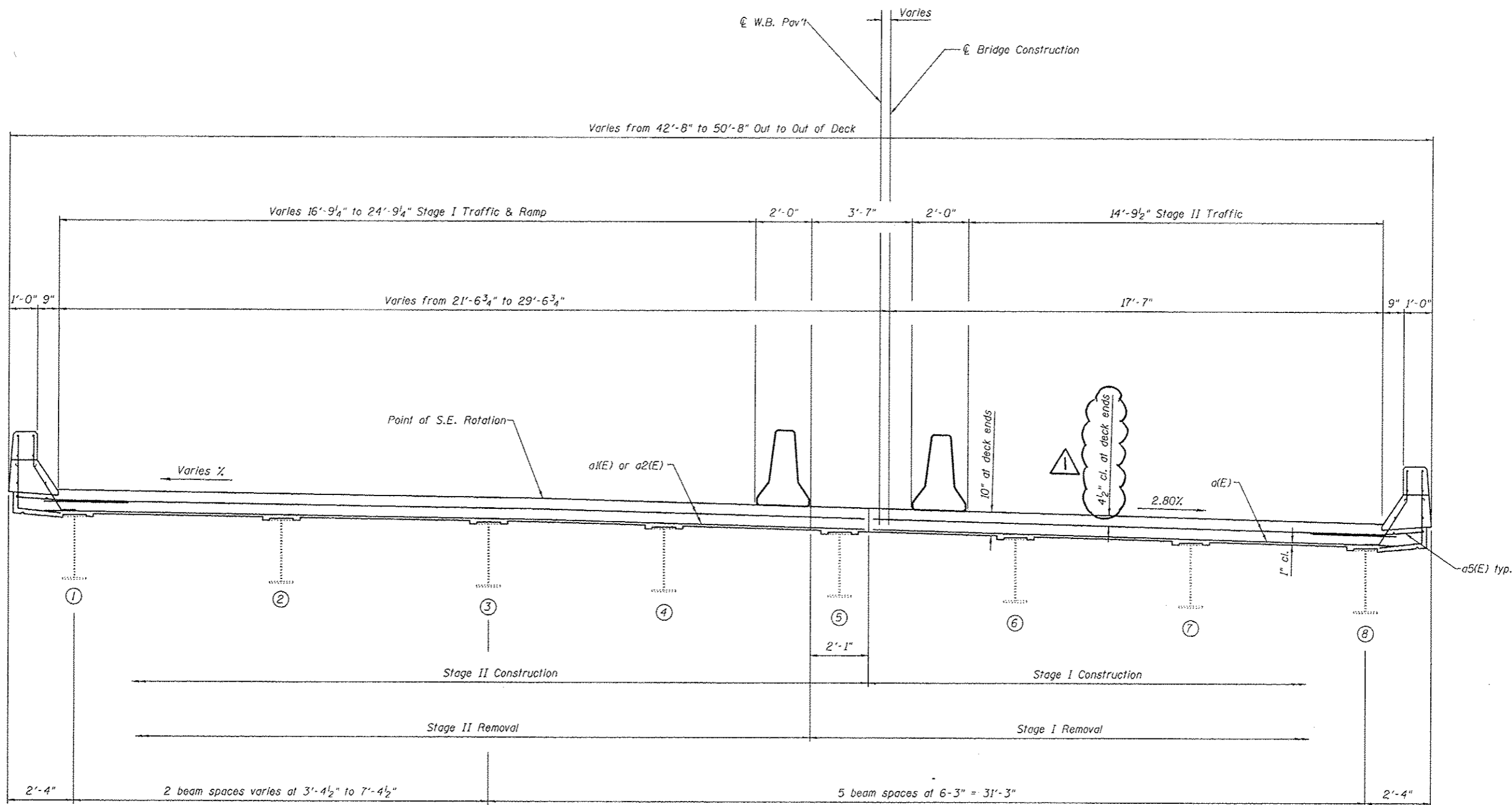
STRUCTURE OMISSIONS:
WB: STA. 53+67.18 TO STA. 55+46.59
EB: STA. 53+67.98 TO STA. 55+42.89

LEGEND (FOR THIS SHEET ONLY)

- 1 EXISTING CONTINUOUSLY REINFORCED PCC PAVEMENT - 7"
- 2 EXISTING STABILIZED SHOULDER
- 3 EXISTING STABILIZED SUB-BASE - 4"
- 4 EXISTING SUB-BASE, TYPE "C" - 4"
- 5 EXISTING AGGREGATE SHOULDER, TYPE "A"
- 6 EXISTING HOT-MIX OVERLAY 2 1/2" AND VARIES
- 7 PROPOSED PAVED SHOULDER REMOVAL
- 8 PROPOSED HOT-MIX ASPHALT BASE COURSE, 8 3/4"

△ REVISED SHEET 1-4-13

FILE NAME	USER NAME	DESIGNED	REVISED	STATE OF ILLINOIS DEPARTMENT OF TRANSPORTATION	TYPICAL SECTIONS FOR STAGE CONSTRUCTION		F.A.P. RTE.	SECTION	COUNTY	TOTAL SHEETS	SHEET NO.
#FILE#		DRAWN	REVISED				789	125-1HB-1	MADISON	29	8
	PLOT SCALE	CHECKED	REVISED		SCALE: NONE SHEET 1 OF 1 SHEETS STA. TO STA.		CONTRACT NO. 76F54				
	PLOT DATE	DATE	REVISED		ILLINOIS FED. AID PROJECT						



CROSS SECTION

(Looking East)

⚠ REVISÉ

1-4-13

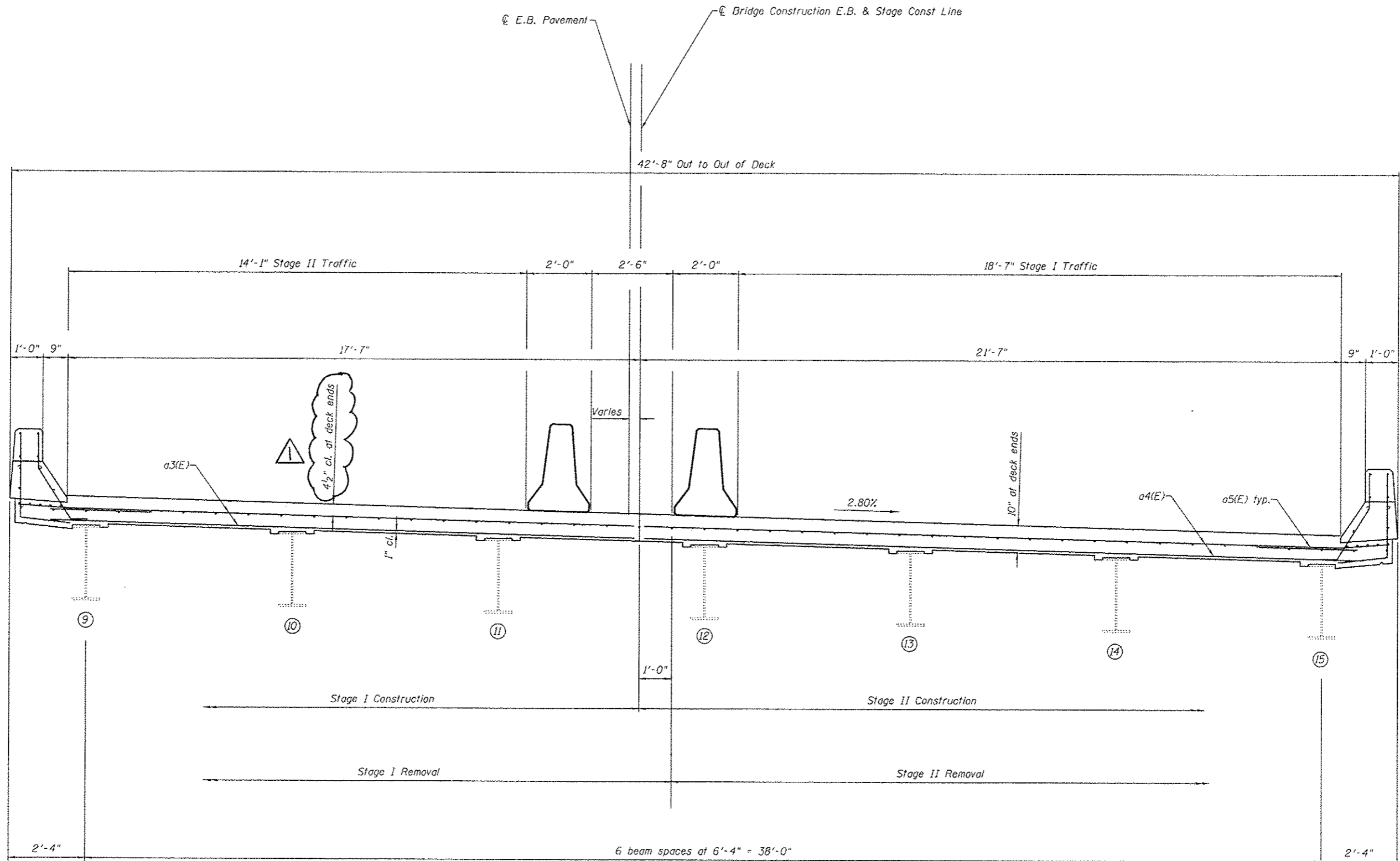
DESIGNED - AYY	EXAMINED	DATE -
CHECKED -	ENGINEER OF STRUCTURAL SERVICES	
DRAWN - AYY	PASSED	REVISED
CHECKED -	ENGINEER OF BRIDGES AND STRUCTURES	REVISED

**STATE OF ILLINOIS
DEPARTMENT OF TRANSPORTATION**

**CROSS SECTION
SN 060-0191 (WB)**

SHEET NO. 2 OF 16 SHEETS

F.A.P. RTE. 789	SECTION 125-IHB-1	COUNTY Madison	TOTAL SHEETS 29	SHEET NO. 15
CONTRACT NO. 76F54			ILLINOIS FED. AID PROJECT	



CROSS SECTION
(Looking East)

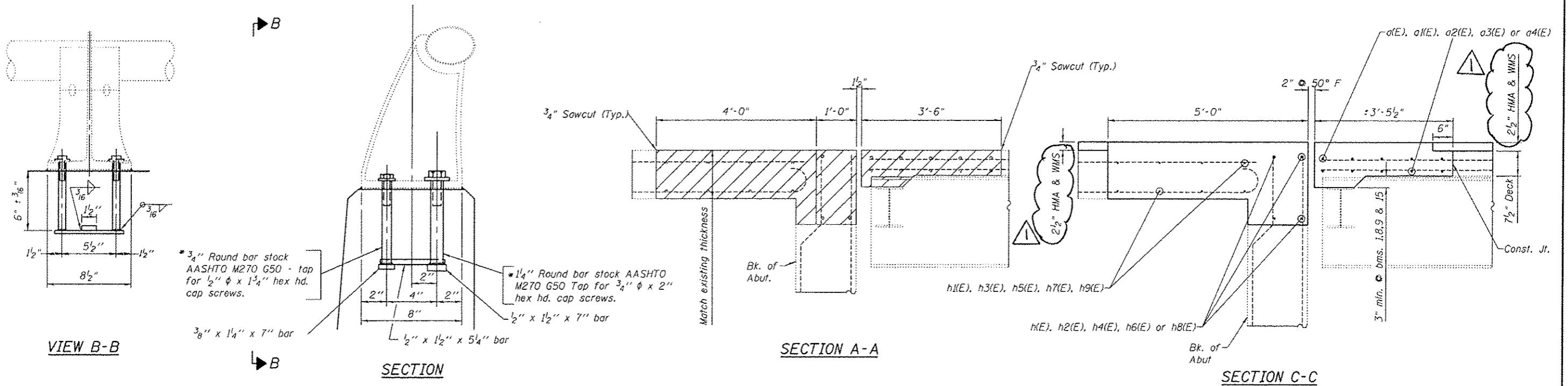
REVISION 1-4-13

DESIGNED - AYV	EXAMINED	DATE -
CHECKED -	ENGINEER OF STRUCTURAL SERVICES	
DRAWN - AYV	PASSED	REVISED
CHECKED -	ENGINEER OF BRIDGES AND STRUCTURES	REVISED

STATE OF ILLINOIS
DEPARTMENT OF TRANSPORTATION

CROSS SECTION
SN 060-0192 (EB)
SHEET NO. 3 OF 16 SHEETS

F.A.P. RTE.	SECTION	COUNTY	TOTAL SHEETS	SHEET NO.
789	125-1HB-1	Madison	29	16
CONTRACT NO. 76F54				
ILLINOIS FED. AID PROJECT				



VIEW B-B

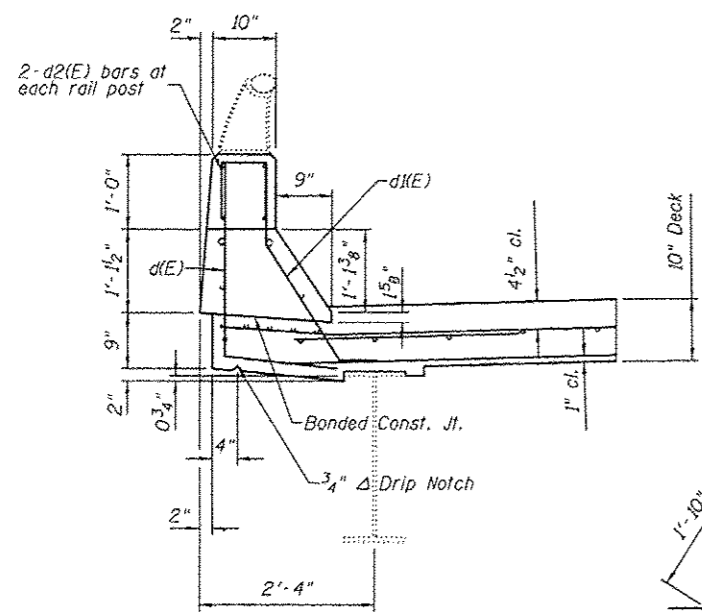
SECTION

SECTION A-A

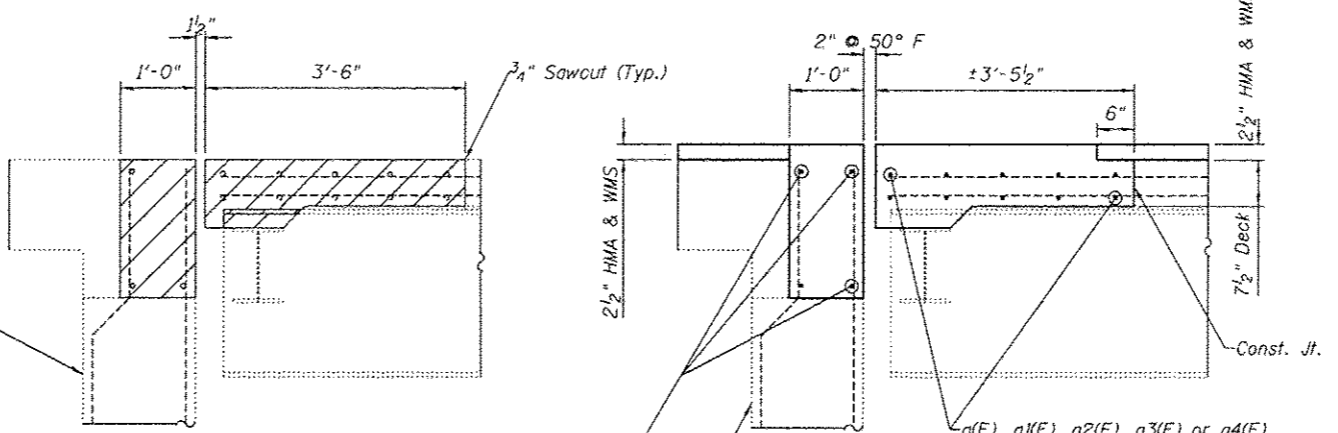
SECTION C-C

RAIL POST DETAILS

*In lieu of the cast-in-place anchor device shown, the Contractor has the option of drilling and setting stainless steel anchor rods of the same diameter and grade as the specified cap screws according to Article 509.06 of the Standard Specifications. Embedment shall be according to the manufacturer's specifications. Cost of providing anchorages is included with Concrete Superstructure.



PARAPET SECTION



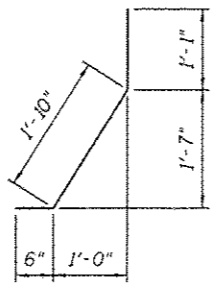
SECTION B-B

SECTION D-D

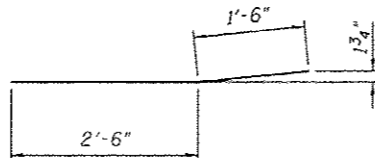
BILL OF MATERIAL

Bar	No.	Size	Length	Shape
a(E)	20	#5	18'-8"	—
a1(E)	10	#6	29'-2"	—
a2(E)	10	#5	21'-5"	—
a3(E)	20	#6	17'-11"	—
a4(E)	20	#5	21'-11"	—
a5(E)	32	#6	4'-0"	—
d(E)	32	#4	4'-1"	J
d1(E)	32	#5	3'-5"	J
d2(E)	16	#4	2'-1"	□
h(E)	8	#6	18'-9"	—
h1(E)	16	#6	12'-8"	—
h2(E)	4	#6	29'-4"	—
h3(E)	8	#5	24'-5"	—
h4(E)	4	#6	21'-3"	—
h5(E)	8	#5	15'-1"	—
h6(E)	8	#6	22'-0"	—
h7(E)	16	#5	12'-1"	—
h8(E)	8	#6	18'-0"	—
h9(E)	16	#5	11'-3"	—
Concrete Removal		Cu. Yd.	62.3	
Concrete Superstructure		Cu. Yd.	69.0	
Reinforcement Bars, Epoxy Coated		Lbs.	4500	

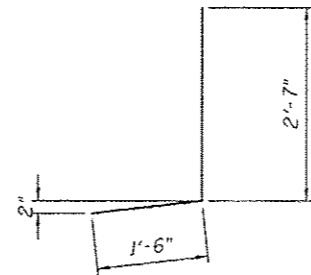
Reinforcement bars designated (E) shall be epoxy coated.



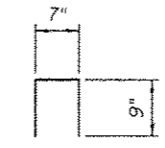
BAR d1(E)



BAR a5(E)



BAR d(E)



BAR d2(E)

REVISION

1-4-13