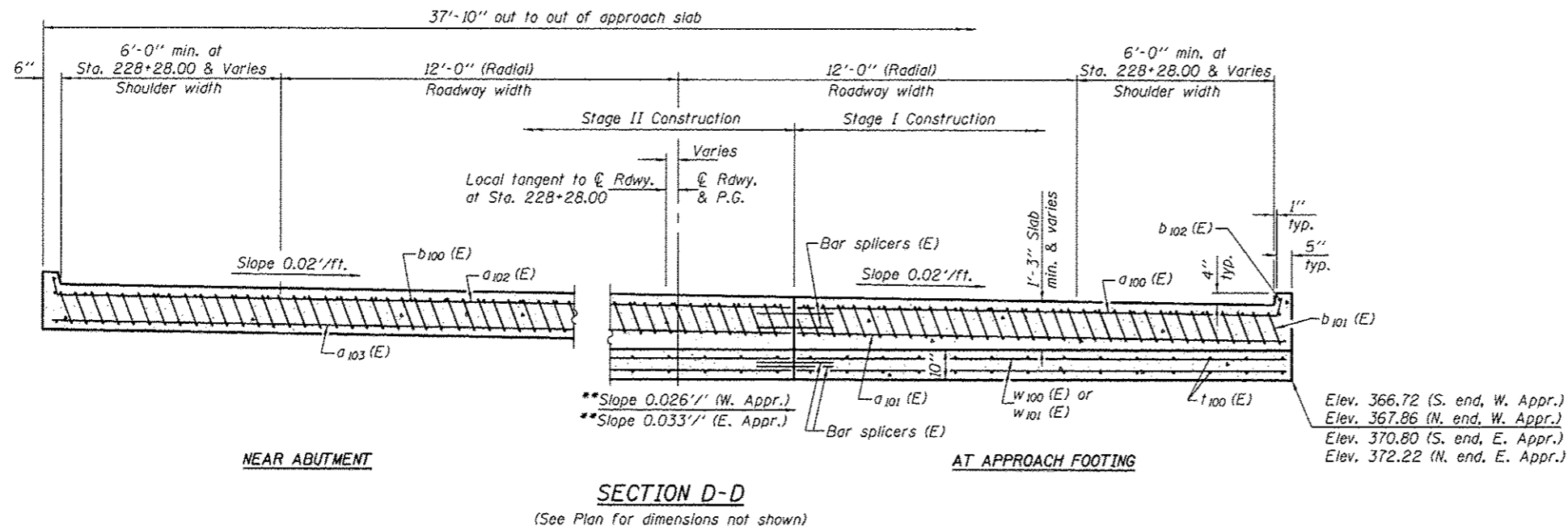


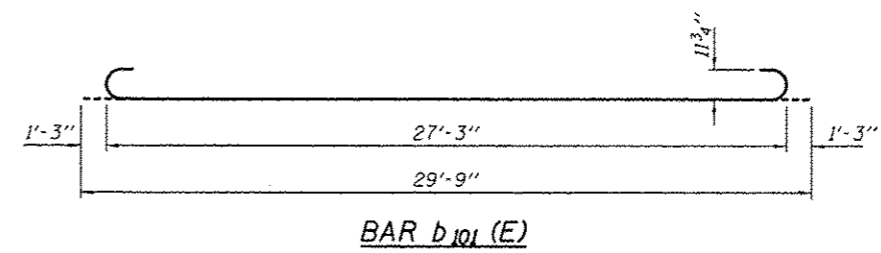
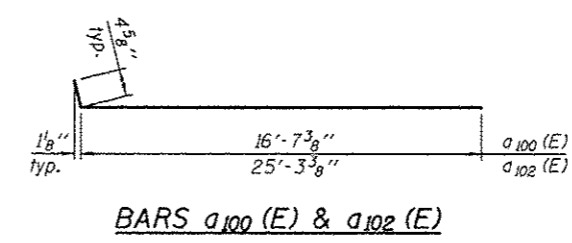
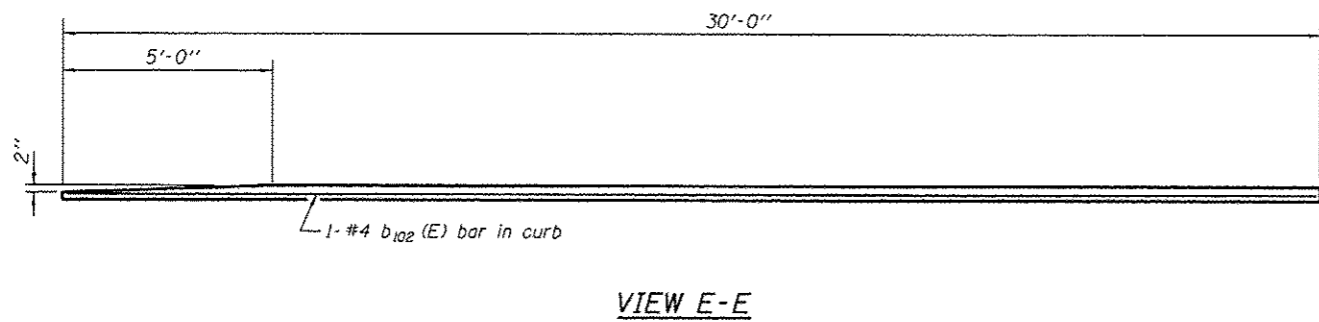
Notes:
 See sheet 12 of 21 for Detail A and View B-B.
 Approach slab and parapet concrete shall be paid for as Concrete Superstructure.
 Approach footing concrete shall be paid for as Concrete Structures.
 Reinforcement shall be paid for as Reinforcement Bars, Epoxy Coated.
 For v(E) bar details, see sheet 10 of 21.
 The approach footing maximum applied service bearing pressure (Qmax) = 2.0 ksf.
 For bar splicer details, see sheet 18 of 21.
 Cost of excavation for approach footing included with Concrete Structures.
 For Porous Granular Embankment (Special) and drainage treatment details, see sheet 2 of 21.

*Tilt #9 b₁₀₁ (E) bars as required to maintain clearance.
 **Slopes are measured along the length of approach footing.
 ***Cost included with Concrete Superstructure.



**TWO APPROACHES
 BILL OF MATERIAL**

Bar	No.	Size	Length	Shape
a ₁₀₀ (E)	50	#4	17'-0"	—
a ₁₀₁ (E)	92	#5	16'-10"	—
a ₁₀₂ (E)	50	#4	25'-8"	—
a ₁₀₃ (E)	92	#5	25'-7"	—
b ₁₀₀ (E)	64	#4	29'-8"	—
b ₁₀₁ (E)	180	#9	29'-9"	—
b ₁₀₂ (E)	4	#4	29'-8"	—
t ₁₀₀ (E)	160	#4	11'-1"	—
w ₁₀₀ (E)	80	#5	16'-11"	—
w ₁₀₁ (E)	80	#5	25'-8"	—
Concrete Superstructure			Cu. Yd.	106.5
Concrete Structures			Cu. Yd.	26.6
Reinforcement Bars, Epoxy Coated			Pound	29790



▲ SHEET ADDED 1-4-13