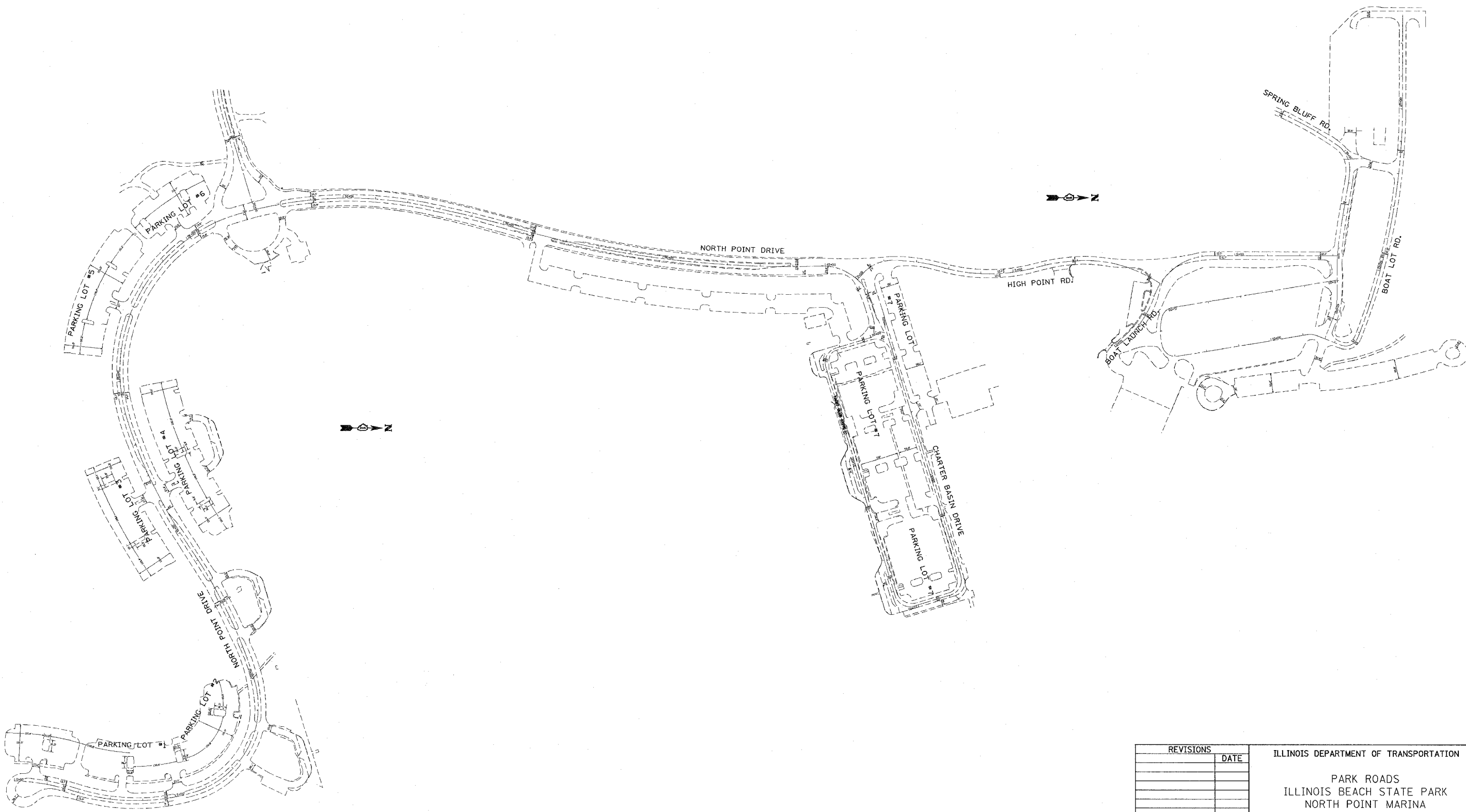


RTE.	SECTION	COUNTY	TOTAL SHEETS	SHEET NO.
* 2006-027 I	LAKE		31	5
FED. ROAD DIST. NO. 1	ILLINOIS	FED. AID PROJECT		
* PARK ROADS		IDNR File No. 2-03-025 B	D91-401-06	



PLOT DATE 11/3/2006
 FILE NAME c:\projects\1134482\design\32
 REFERENCE #REF#

REVISIONS	DATE

ILLINOIS DEPARTMENT OF TRANSPORTATION
 PARK ROADS
 ILLINOIS BEACH STATE PARK
 NORTH POINT MARINA
 LOCATIONS OF EXISTING PARKING LOTS
 SCALE: DATE
 DRAWN BY: CDT
 CHECKED BY: