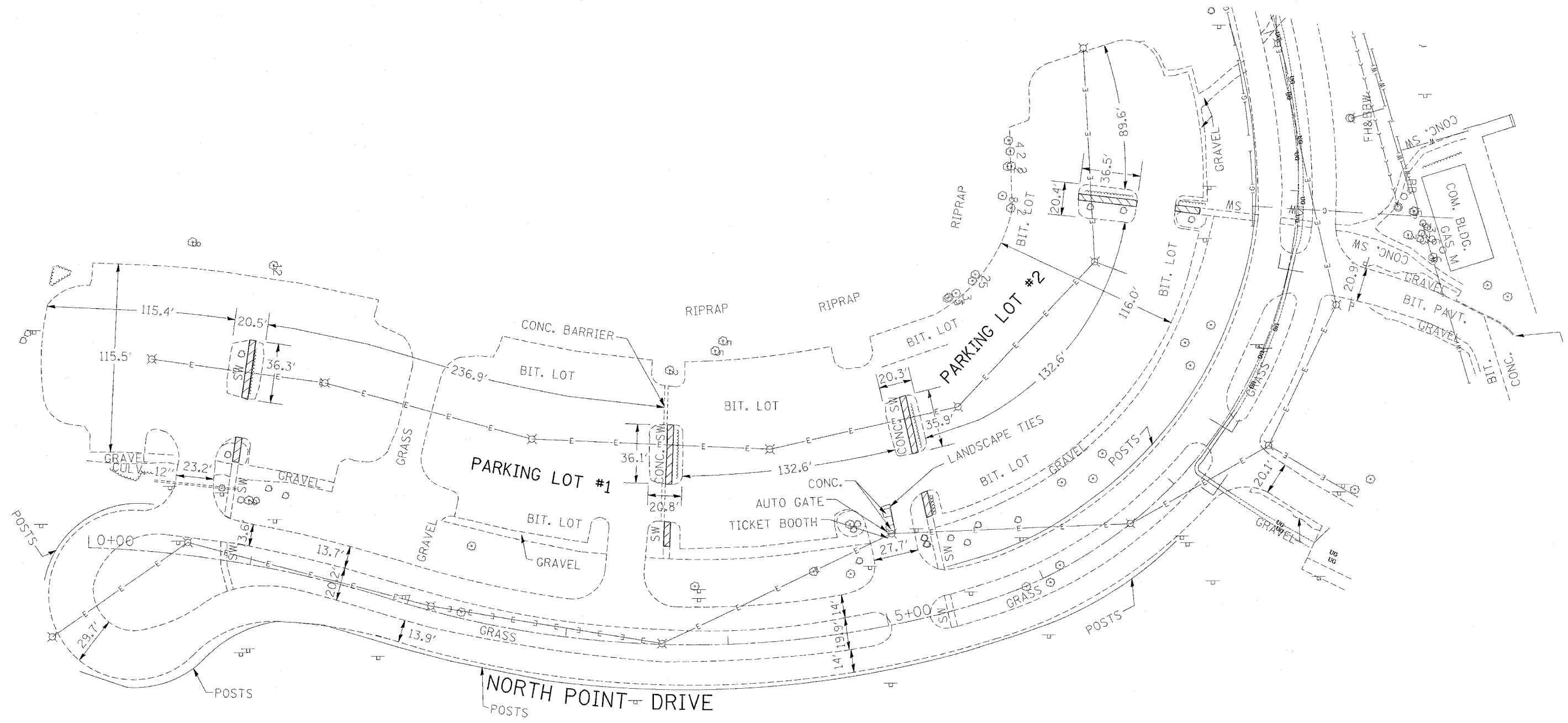


RTE.	SECTION	COUNTY	TOTAL SHEET NO.
* 2006-027 I	LAKE		31 6
FED. ROAD DIST. NO. 1	ILLINOIS	FED. AID PROJECT	
* PARK ROADS IDNR File No. 2-03-025 B D91-401-06			



11/2/2006
 c:\projects\p134182\design\m32
 58.0000 1 / IN.
 REF#

REVISIONS	
DATE	

ILLINOIS DEPARTMENT OF TRANSPORTATION
 PARK ROADS
 ILLINOIS BEACH STATE PARK
 NORTH POINT MARINA
 NORTH POINT DRIVE
 PARKING LOT 1 & 2
 EXISTING PLAN & UTILITIES
 SCALE: DATE
 DRAWN BY: CDT
 CHECKED BY: