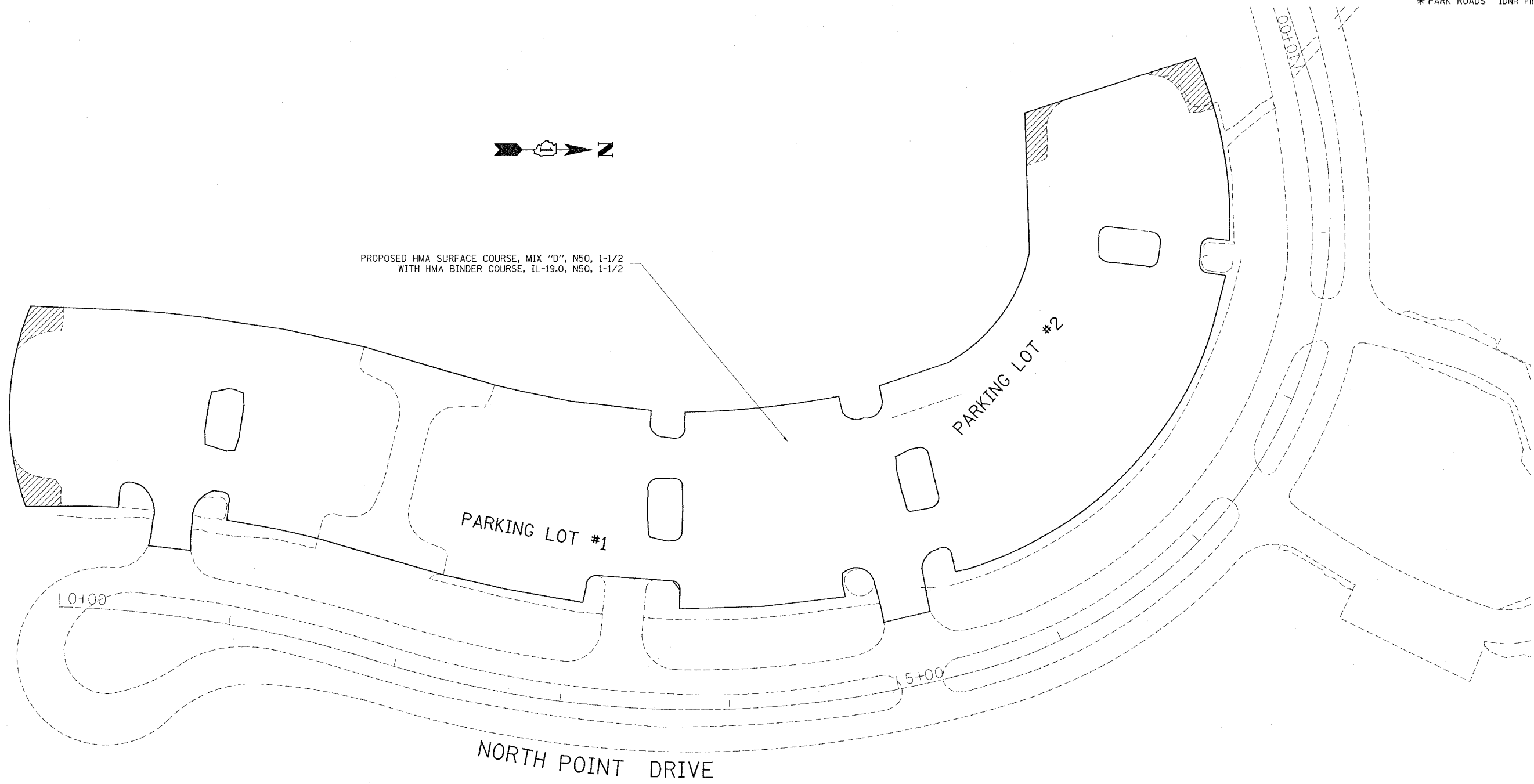


RTE.	SECTION	COUNTY	TOTAL SHEETS	SHEET NO.
*	2006-027 I	LAKE	31	11
FED. ROAD DIST. NO. 1		ILLINOIS	FED. AID PROJECT	
* PARK ROADS		IDNR File No.	2-03-025 B D91-401-06	



PROPOSED HMA SURFACE COURSE, MIX "D", N50, 1-1/2  
WITH HMA BINDER COURSE, IL-19.0, N50, 1-1/2

PARKING LOT #1

PARKING LOT #2

NORTH POINT DRIVE

NOTE: RESURFACING LIMIT SHALL BE TO THE RAIDOUS RETURN AND/OR AS DIRECTIED BY THE ENGINEER

 PROPOSED WIDENING OF CORNERS AS INDICATED ON TYPICAL SECTION

REVISIONS	
NAME	DATE

ILLINOIS DEPARTMENT OF TRANSPORTATION  
PARK ROADS  
ILLINOIS BEACH STATE PARK  
NORTH POINT MARINA  
NPRTH POINT DRIVE  
PARKING LOT 1 & 2  
PROPOSED PLAN

SCALE: DATE: DRAWN BY: CDT CHECKED BY:

PLOT DATE 11/3/2006  
 PLOT SCALE 50.0000' = 1" IN.  
 REFERENCE #REF#