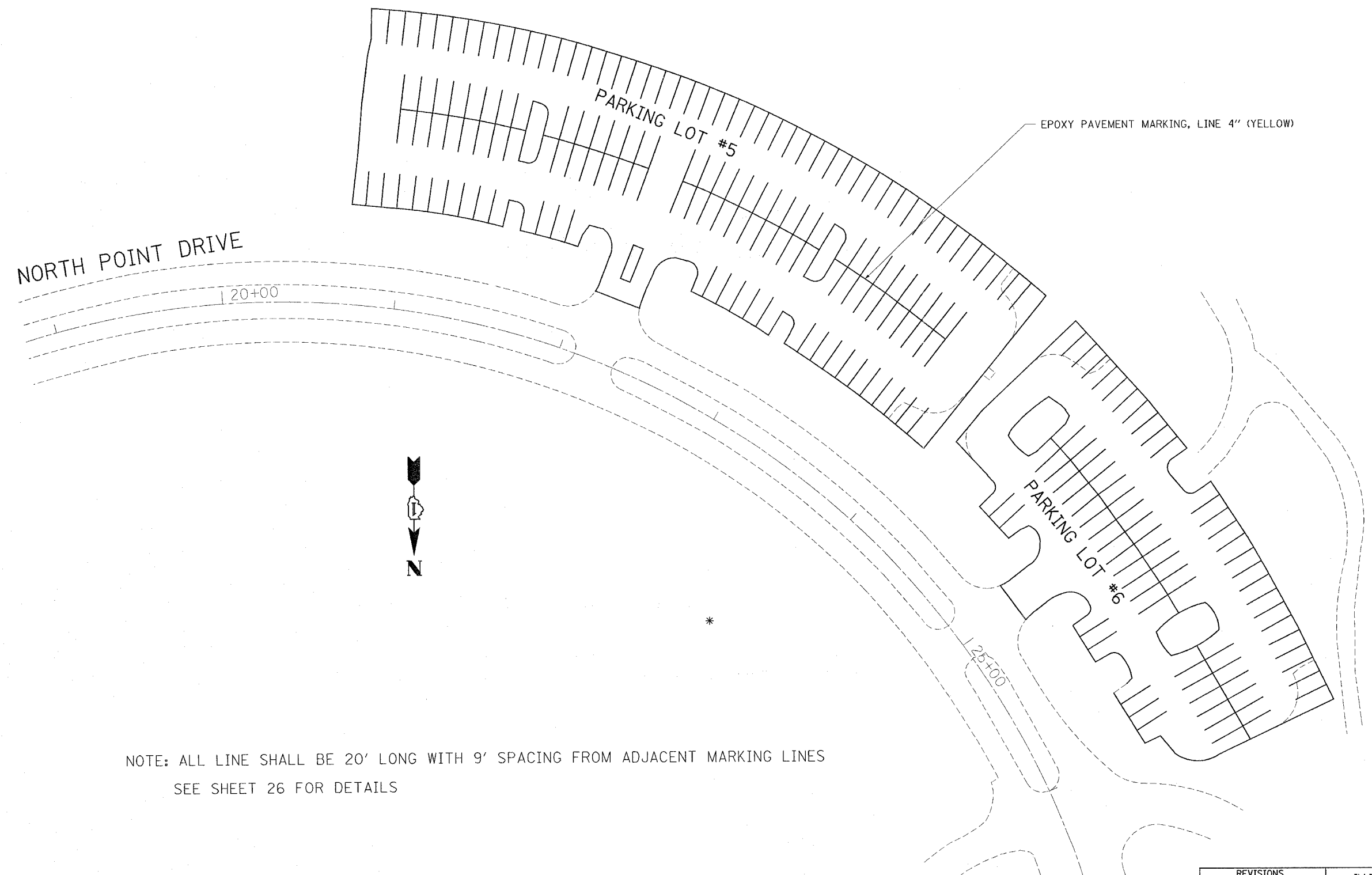


RTE.	SECTION	COUNTY	TOTAL SHEETS	SHEET NO.
*	2006-027 I	LAKE	31	22
FED. ROAD DIST. NO. 1		ILLINOIS	FED. AID PROJECT	
* PARK ROADS		IDNR File No. 2-03-025 B	D91-401-06	



NOTE: ALL LINE SHALL BE 20' LONG WITH 9' SPACING FROM ADJACENT MARKING LINES  
SEE SHEET 26 FOR DETAILS

REVISIONS	
NAME	DATE

ILLINOIS DEPARTMENT OF TRANSPORTATION  
PARK ROADS  
ILLINOIS BEACH STATE PARK  
NORTH POINT MARINA  
NORTH POINT DRIVE  
PARKING LOT 5 & 6  
PAVEMENT MARKING PLAN

SCALE: DATE  
DRAWN BY: CDT  
CHECKED BY:

PLOT DATE 11/13/2006  
FILE NAME c:\p\projects\134402\design\m32  
PLOT SCALE 88.0000 / 1 IN.  
REFERENCE #REF#