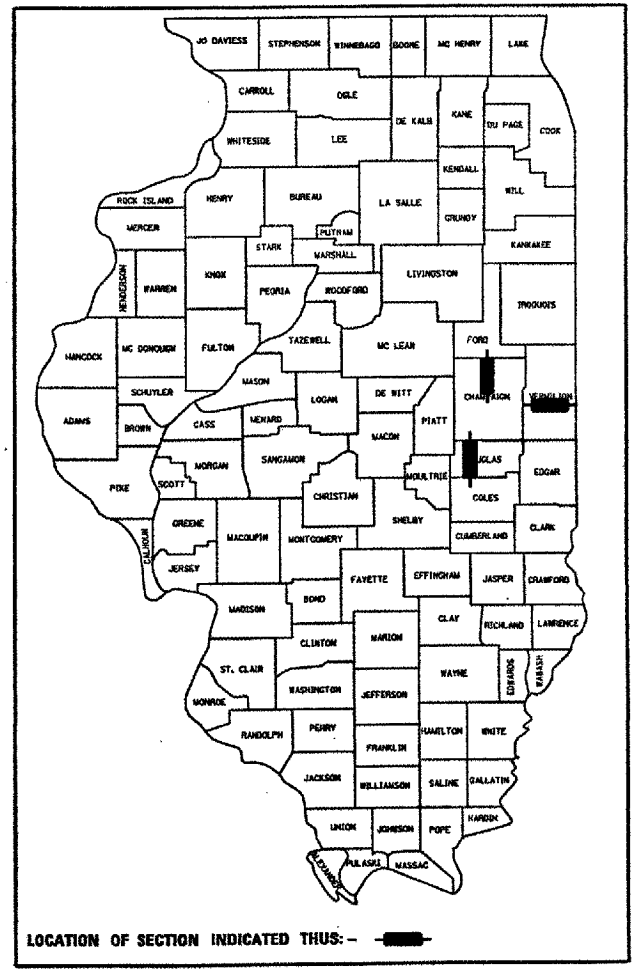


F.A.I. RTE.	SECTION	COUNTY	TOTAL SHEETS	SHEET NO.
57 & 74	D5 ANNUAL PATCHING 2007-3	CHAMPAIGN, DOUGLAS, & VERMILION	18	1

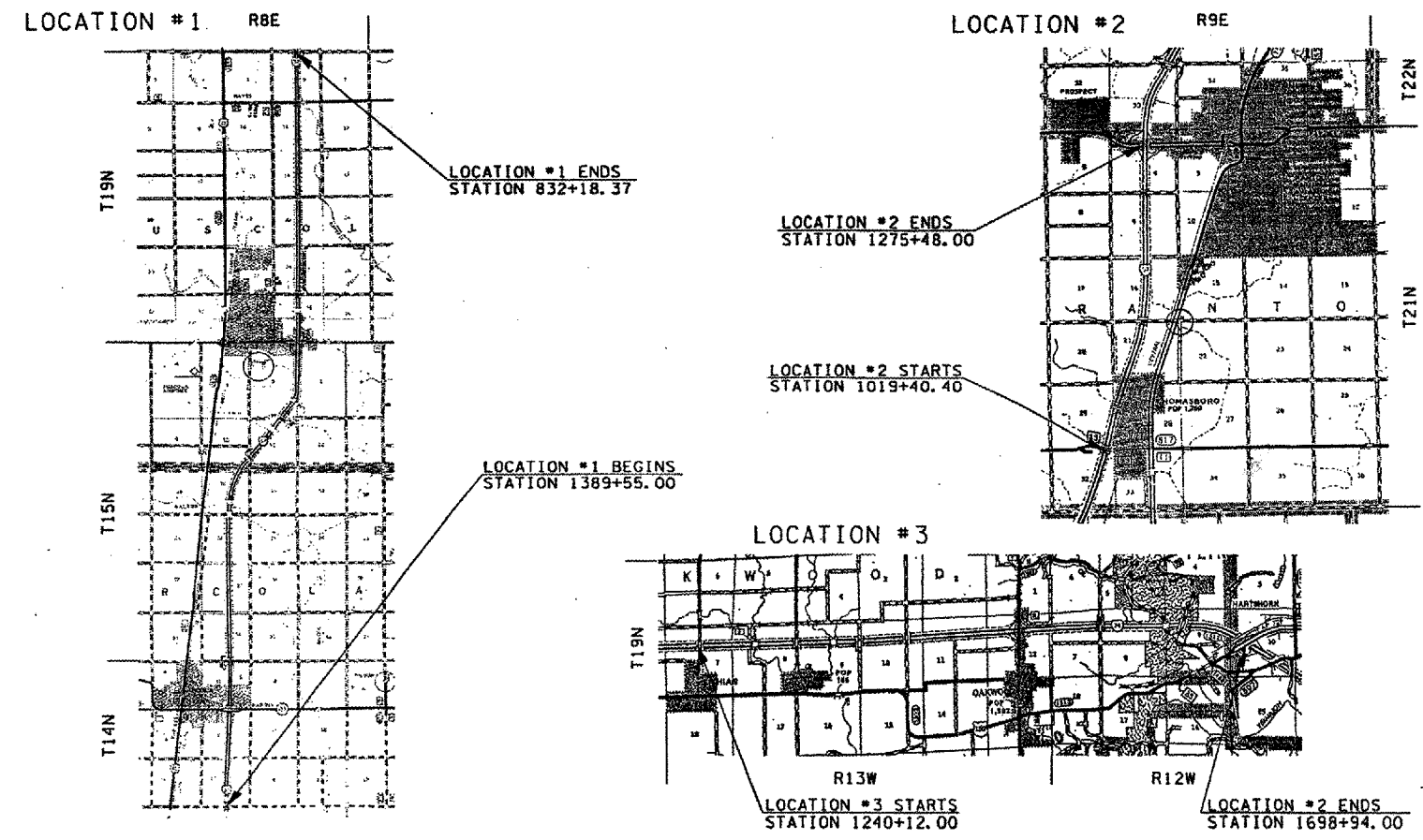
• 57 & 74
 •• D5 ANNUAL PATCHING 2007-3
 ••• CHAMPAIGN, DOUGLAS, & VERMILION
 D-95-082-06

STATE OF ILLINOIS
 DEPARTMENT OF TRANSPORTATION
 DIVISION OF HIGHWAYS
**PROPOSED
 HIGHWAY PLANS**

FOR INDEX OF SHEETS, SEE SHEET NO. 2
 FOR SUMMARY OF QUANTITIES, SEE SHEET NO. 4,5

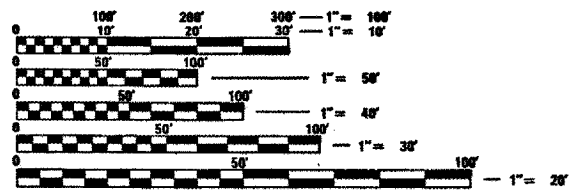


FAI ROUTE 57 & FAI ROUTE 74 (I-57 & I-74)
SECTION D5 ANNUAL PATCHING 2007-3
I-57 FROM COLES CO. LINE TO CHAMPAIGN CO. LINE (NB)
I-57 FROM CH 11 TO US 136 (NB)
I-74 FROM FITHIAN TO US 150
CHAMPAIGN, DOUGLAS, & VERMILION COUNTY
 C-95-082-06



DESIGN DESIGNATION

26200(2005)	I-57 THOMASBORO TO RANTOUL - N/A
19300(2005)	I-57 FROM COLES CO LINE TO TUSCOLA - N/A
26600(2005)	I-57 TUSCOLA TO CHAMPAIGN CO LINE - N/A
24500(2005)	I-74 FITHIAN TO US 150 - N/A



FULL SIZE PLANS HAVE BEEN PREPARED USING STANDARD ENGINEERING SCALES. REDUCED SIZED PLANS WILL NOT CONFORM TO STANDARD SCALES. IN MAKING MEASUREMENTS ON REDUCED PLANS, THE ABOVE SCALES MAY BE USED.

J.U.L.I.E.
 JOINT UTILITY LOCATION INFORMATION FOR EXCAVATION
 1-800-892-0123 RANTOUL, OAKWOOD, DANVILLE,
 ARCOLA, & TUSCOLA TOWNSHIP

STATE OF ILLINOIS
 DEPARTMENT OF TRANSPORTATION
 DIVISION OF HIGHWAYS

SUBMITTED *OC 21 20 06*

December 8, 2006
 Eric E. Naim / DEPUTY DIRECTOR OF HIGHWAYS, REGION 3 ENGINEER

December 8, 2006
 Milton R. Sees, P.E. / ENGINEER OF DESIGN AND ENVIRONMENT

December 8, 2006
 Milton R. Sees, P.E. / DIRECTOR OF HIGHWAYS/CHIEF ENGINEER

**PRINTED BY THE AUTHORITY
 OF THE STATE OF ILLINOIS**

(217) 465-4181

PROJECT ENGINEER: KEVIN TRAPP

SQUAD LEADER: JASON W. STULTS

DESIGNER: EVARISTO QUIROZ

TABLE OF CONTENTS

DESCRIPTION	SHEET NO.
COVER SHEET	1
INDEX OF SHEETS/HIGHWAY STANDARDS	2
GENERAL NOTES	3
SUMMARY OF QUANTITIES	4-5
EXISTING TYPICAL CROSS SECTIONS	6-8
SCHEDULE OF QUANTITIES	9-17
DETAIL OF PATCHING WITH HOT-MIX ASPHALT OVERLAY REMOVAL	18
SPECIAL DETAIL FOR RAMP WORK AREAS	18

HIGHWAY STANDARDS

STANDARD NO.	DESCRIPTION
001001-01	AREAS OF REINFORCEMENT
001006	DECIMAL OF AN INCH AND A FOOT
420001-06	PAVEMENT JOINTS
420701-01	PAVEMENT FABRIC
421001-01	BAR REINFORCEMENT FOR CRC PAVEMENT
442001-03	CLASS A PATCHES
442101-06	CLASS B PATCHES
701400-02	APPROACH TO LANE CLOSURE, FREEWAY/EXPRESSWAY
701401-03	LANE CLOSURE, FREEWAY/EXPRESSWAY
701411-03	LANE CLOSURE, MULT-LANE, AT ENTRANCE OR EXIT RAMP, FOR SPEEDS \geq 45 MPH
702001-06	TRAFFIC CONTROL DEVICES

CONTRACT NO. 70567				
F.A.I. RTE.	SECTION	COUNTY	TOTAL SHEETS	SHEET NO.
2	22	222	18	2
STA. _____		TO STA. _____		
FED. ROAD DIST. NO. _____		ILLINOIS FED. AID PROJECT		

- 57 & 74
- 05 ANNUAL PATCHING 2007-3
- CHAMPAIGN, DOUGLAS, & VERMILION

PLOT DATE = 10/19/2006
 FILE NAME = c:\pwork\10080286\10080286.dwg
 PLOT SCALE = 42.3529 / IN
 USER NAME = p101010

REVISIONS	
NAME	DATE

ILLINOIS DEPARTMENT OF TRANSPORTATION

INDEX OF SHEETS/HIGHWAY STANDARDS

SCALE: VERT.
HORIZ.
DATE

DRAWN BY
CHECKED BY

F.A.I. SECTION	COUNTY	TOTAL SHEETS	SHEET NO.
1	22	18	4
STA. _____	TO STA. _____		
FED. ROAD DIST. NO. ILLINOIS FED. AID PROJECT			

SUMMARY OF QUANTITIES

LOCATION OF WORK:

LOCATION #1 I-57 DOUGLAS COUNTY STA. 1389+55.00 TO STA. 832+18.37 RURAL 100% STATE J000	LOCATION #2 I-57 CHAMPAIGN COUNTY STA. 1019+40.40 TO STA. 1275+48.00 RURAL 100% STATE J000	LOCATION #3 I-74 VERMILION COUNTY STA. 1240+12.00 TO STA. 1698+94.00 RURAL 100% STATE J000
--	---	---

CONSTRUCTION TYPE CODE:

CODE NO	ITEM	UNIT	TOTAL QUANTITY			
40600100	BITUMINOUS MATERIALS (PRIME COAT)	GALLON	100.0	70.0	12.0	18.0
40601005	HOT-MIX ASPHALT REPLACEMENT OVER PATCHES	TON	323.0	203.0	40.0	80.0
42001200	PAVEMENT FABRIC	SQ YD	83.0	0.0	0.0	83.0
44002213	HOT-MIX ASPHALT REMOVAL OVER PATCHES, 3 1/4"	SQ YD	1,240.0	1,112.0	128.0	0.0
44002220	HOT-MIX ASPHALT REMOVAL OVER PATCHES, 5"	SQ YD	286.0	0.0	0.0	286.0
44200513	CLASS A PATCHES, TYPE I, 7 INCH	SQ YD	228.0	92.0	136.0	0.0
44200517	CLASS A PATCHES, TYPE II, 7 INCH	SQ YD	411.0	383.0	28.0	0.0
44200521	CLASS A PATCHES, TYPE III, 7 INCH	SQ YD	144.0	144.0	0.0	0.0
44200523	CLASS A PATCHES, TYPE IV, 7 INCH	SQ YD	119.0	119.0	0.0	0.0
44200525	CLASS A PATCHES, TYPE I, 8 INCH	SQ YD	24.0	24.0	0.0	0.0
44200529	CLASS A PATCHES, TYPE II, 8 INCH	SQ YD	140.0	140.0	0.0	0.0
44200535	CLASS A PATCHES, TYPE IV, 8 INCH	SQ YD	27.0	27.0	0.0	0.0
44200970	CLASS B PATCHES, TYPE II, 10 INCH	SQ YD	150.0	0.0	0.0	150.0
44200974	CLASS B PATCHES, TYPE III, 10 INCH	SQ YD	56.0	0.0	0.0	56.0
44200976	CLASS B PATCHES, TYPE IV, 10 INCH	SQ YD	27.0	0.0	0.0	27.0
44213000	PATCHING REINFORCEMENT	SQ YD	1,093.0	929.0	164.0	0.0
44213200	SAW CUTS	FOOT	8,132.0	5,636.0	1,428.0	1,068.0
67100100	MOBILIZATION	L SUM	1.0	0.4	0.3	0.3

- 57 & 74
- 05 ANNUAL PATCHING 2007-3
- CHAMPAIGN, DOUGLAS, & VERMILION

PLOT DATE: 10/19/2006
 PLOT SCALE: 1/4" = 1'-0"
 USER NAME: kvl13a.m

REVISIONS		ILLINOIS DEPARTMENT OF TRANSPORTATION
NAME	DATE	
SCALE: VERT. _____		DRAWN BY _____
DATE _____		

SUMMARY OF QUANTITIES

F.A.I. RTE.	SECTION	COUNTY	TOTAL SHEETS	SHEET NO.
.	18	6

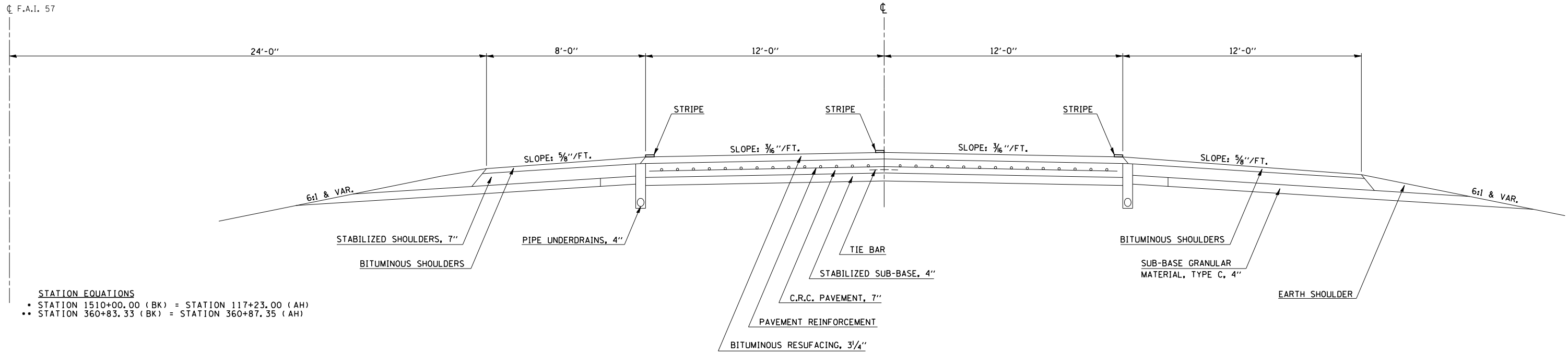
- 57 & 74
- D5 ANNUAL PATCHING 2007-3
- CHAMPAIGN, DOUGLAS, & VERMILION

EXISTING TYPICAL CROSS SECTION

LOCATION #1

F.A.I. 57 (DOUGLAS COUNTY)

STATION 1268+00.00 TO STATION 175+13.87 •
STATION 175+13.87 TO STATION 547+01.25 ••



STATION EQUATIONS

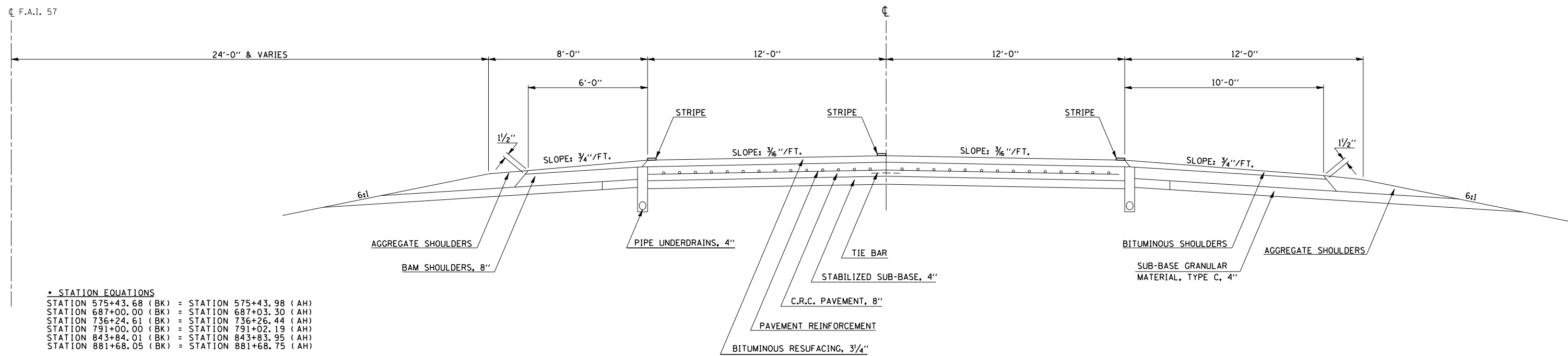
- STATION 1510+00.00 (BK) = STATION 117+23.00 (AH)
- STATION 360+83.33 (BK) = STATION 360+87.35 (AH)

EXISTING TYPICAL CROSS SECTION

LOCATION #1

F.A.I. 57 (DOUGLAS COUNTY)

STATION 547+01.25 TO STATION 945+52.78 •



STATION EQUATIONS

- STATION 575+43.68 (BK) = STATION 575+43.98 (AH)
- STATION 687+00.00 (BK) = STATION 687+03.30 (AH)
- STATION 736+24.61 (BK) = STATION 736+26.44 (AH)
- STATION 791+00.00 (BK) = STATION 791+02.19 (AH)
- STATION 843+84.01 (BK) = STATION 843+83.95 (AH)
- STATION 881+68.05 (BK) = STATION 881+68.75 (AH)

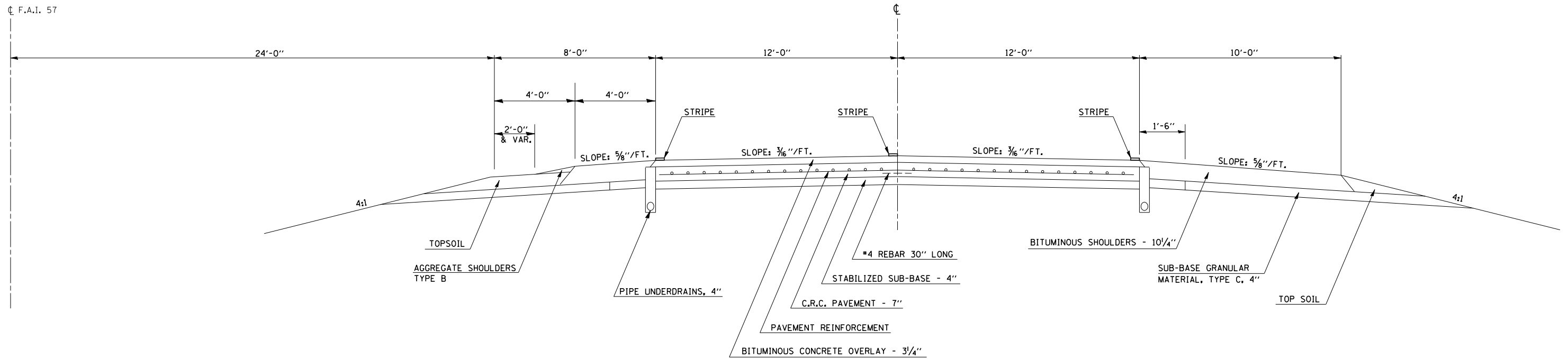
PLOT DATE = 10/25/2006
 FILE NAME = c:\projects\70567\plans\p1.dgn
 PLOT SCALE = 42.3525' / IN.
 USER NAME = stults,j

F.A.I. RTE.	SECTION	COUNTY	TOTAL SHEETS	SHEET NO.
*	**	***	18	7

EXISTING TYPICAL CROSS SECTION LOCATION #2 F.A.I. 57 (NB) (CHAMPAIGN COUNTY)

STATION 904+40.00 TO STATION 1014+90.50
STATION 1018+66.50 TO STATION 1126+93.50
STATION 1130+68.50 TO STATION 1233+57.50
STATION 1237+32.50 TO STATION 1274+48.00

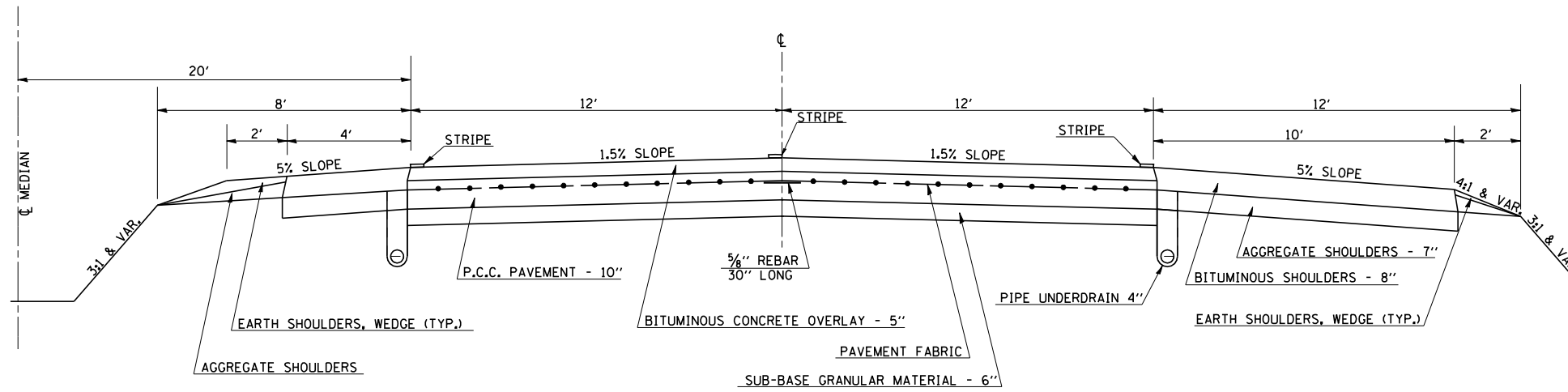
- 57 & 74
- D5 ANNUAL PATCHING 2007-3
- CHAMPAIGN, DOUGLAS, & VERMILION



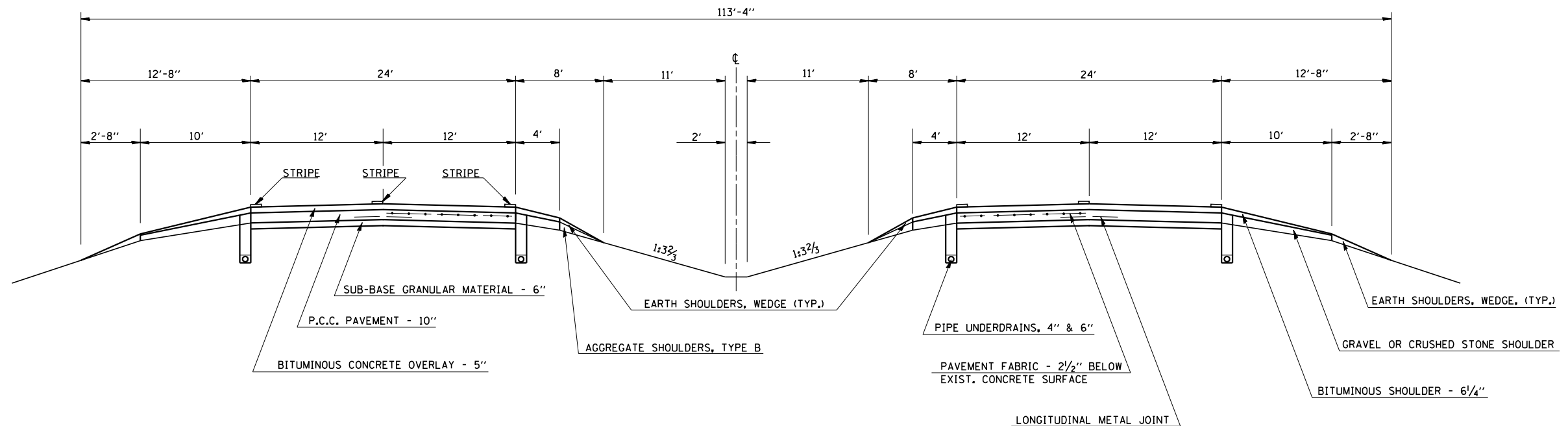
F.A.I. RTE.	SECTION	COUNTY	TOTAL SHEETS	SHEET NO.
*	**	***	18	8

- 57 & 74
- D5 ANNUAL PATCHING 2007-3
- CHAMPAIGN, DOUGLAS, & VERMILION

**EXISTING TYPICAL CROSS SECTION
LOCATION #3
F.A.I. 74 (VERMILION COUNTY)
STATION 1240+12.00 TO STATION 1616+00.00**



**EXISTING TYPICAL CROSS SECTION
LOCATION #3
F.A.I. 74 (VERMILION COUNTY)
STATION 1616+00.00 TO STATION 1720+00.00**



PLOT DATE = 10/25/2006
 FILE NAME = c:\projects\verm\4568206\4568206.dgn
 PLOT SCALE = 42.3525' / IN.
 USER NAME = stults,j

SCHEDULE OF QUANTITIES

CLASS A PATCHES

LOCATION #1 - I-57

F.A.I. RTE.	SECTION	COUNTY	TOTAL SHEETS	SHEET NO.
:	::	:::	18	9
STA. _____		TO STA. _____		
FED. ROAD DIST. NO. _____		ILLINOIS FED. AID PROJECT		

- 57 & 74
- D5 ANNUAL PATCHING 2007-3
- CHAMPAIGN, DOUGLAS, & VERMILION

STATION	DIRECTION	LANE	LENGTH (ft)	WIDTH (ft)	PATCH AREA				SAW CUTS 44213200 (ft)	TIE BARS Z0075300 (Each)	PATCHING REINFORCEMENT 44213000 (sq. yd)	HMA REM OVER PATCH 3.25 44002213 (sq. yd)	HMA REPLACEMENT OVER PATCHES 40601005 (Tons)
					TYPE I 7" (sq. yd)	TYPE II 7" (sq. yd)	TYPE III 7" (sq. yd)	TYPE IV 7" (sq. yd)					
1389+55.00	NORTHBOUND	DL	8	6	0.0	5.3	0.0	0.0	40.0	0	5.3	6.7	1.2
1392+82.36	NORTHBOUND	DL	6	6	4.0	0.0	0.0	0.0	36.0	0	4.0	5.3	1.0
1396+46.68	NORTHBOUND	DL	8	6	0.0	5.3	0.0	0.0	40.0	0	5.3	6.7	1.2
1400+16.28	NORTHBOUND	DL	6	6	4.0	0.0	0.0	0.0	36.0	0	4.0	5.3	1.0
1407+71.32	NORTHBOUND	DL	10	6	0.0	6.7	0.0	0.0	44.0	0	6.7	8.0	1.5
1409+35.00	NORTHBOUND	DL	10	6	0.0	6.7	0.0	0.0	44.0	0	6.7	8.0	1.5
1410+40.60	NORTHBOUND	DL	6	6	4.0	0.0	0.0	0.0	36.0	0	4.0	5.3	1.0
1413+62.68	NORTHBOUND	DL	10	6	0.0	6.7	0.0	0.0	44.0	0	6.7	8.0	1.5
1414+15.48	NORTHBOUND	DL	10	6	0.0	6.7	0.0	0.0	44.0	0	6.7	8.0	1.5
1415+73.88	NORTHBOUND	DL	6	6	4.0	0.0	0.0	0.0	36.0	0	4.0	5.3	1.0
1423+65.88	NORTHBOUND	DL,LWL	6	6	4.0	0.0	0.0	0.0	36.0	0	4.0	5.3	1.0
1425+03.16	NORTHBOUND	DL	28	12	0.0	0.0	0.0	37.3	104.0	14	37.3	40.0	7.3
1428+04.12	NORTHBOUND	DL	8	6	0.0	5.3	0.0	0.0	40.0	0	5.3	6.7	1.2
1428+93.88	NORTHBOUND	PL	6	6	4.0	0.0	0.0	0.0	36.0	0	4.0	5.3	1.0
1436+22.52	NORTHBOUND	DL	6	12	0.0	8.0	0.0	0.0	60.0	0	8.0	10.7	1.9
1437+54.52	NORTHBOUND	DL	6	12	0.0	8.0	0.0	0.0	60.0	0	8.0	10.7	1.9
1441+08.28	NORTHBOUND	DL	6	6	4.0	0.0	0.0	0.0	36.0	0	4.0	5.3	1.0
1444+03.96	NORTHBOUND	DL	6	6	4.0	0.0	0.0	0.0	36.0	0	4.0	5.3	1.0
1445+25.40	NORTHBOUND	DL,LWL	25	6	0.0	0.0	16.7	0.0	74.0	13	16.7	18.0	3.3
1447+10.20	NORTHBOUND	DL	8	6	0.0	5.3	0.0	0.0	40.0	0	5.3	6.7	1.2
1453+43.80	NORTHBOUND	DL	8	12	0.0	10.7	0.0	0.0	64.0	0	10.7	13.3	2.4
1454+91.64	NORTHBOUND	DL	15	6	0.0	10.0	0.0	0.0	54.0	0	10.0	11.3	2.1
1455+07.48	NORTHBOUND	DL	6	6	4.0	0.0	0.0	0.0	36.0	0	4.0	5.3	1.0
1456+44.76	NORTHBOUND	DL	25	6	0.0	0.0	16.7	0.0	74.0	13	16.7	18.0	3.3
1456+71.16	NORTHBOUND	DL	25	6	0.0	0.0	16.7	0.0	74.0	13	16.7	18.0	3.3
1459+14.04	NORTHBOUND	DL	8	6	0.0	5.3	0.0	0.0	40.0	0	5.3	6.7	1.2
1461+09.40	NORTHBOUND	DL	10	12	0.0	13.3	0.0	0.0	68.0	0	13.3	16.0	2.9
1461+88.60	NORTHBOUND	DL	6	12	0.0	8.0	0.0	0.0	60.0	0	8.0	10.7	1.9
SHEET TOTALS					36.0 (sq. yd)	111.3 (sq. yd)	50.0 (sq. yd)	37.3 (sq. yd)	1392.0 (ft)	53.0 (Each)	234.7 (sq. yd)	280.0 (sq. yd)	51.0 (Tons)

PLOT DATE = 10/25/2006
 FILE NAME = c:\projects\05082006\08170567 text.dgn
 PLOT SCALE = 42.3525' / IN.
 USER NAME = stults,j

REVISIONS		ILLINOIS DEPARTMENT OF TRANSPORTATION
NAME	DATE	
		SCHEDULE OF QUANTITIES SCALE: VERT. _____ HORIZ. _____ DATE _____
DRAWN BY _____		CHECKED BY _____

SCHEDULE OF QUANTITIES

CLASS A PATCHES

LOCATION #1 - I-57

F.A.I. RTE.	SECTION	COUNTY	TOTAL SHEETS	SHEET NO.
:	::	***	18	10
STA. _____		TO STA. _____		
FED. ROAD DIST. NO. _____		ILLINOIS FED. AID PROJECT		

- 57 & 74
- D5 ANNUAL PATCHING 2007-3
- CHAMPAIGN, DOUGLAS, & VERMILION

STATION	DIRECTION	LANE	LENGTH (ft)	WIDTH (ft)	PATCH AREA				SAW CUTS 44213200 (ft)	TIE BARS Z0075300 (Each)	PATCHING REINFORCEMENT 44213000 (sq. yd)	HMA REM OVER PATCH 3.25 44002213 (sq. yd)	HMA REPLACEMENT OVER PATCHES 40601005 (Tons)
					TYPE I 7" (sq. yd)	TYPE II 7" (sq. yd)	TYPE III 7" (sq. yd)	TYPE IV 7" (sq. yd)					
1462+99.48	NORTHBOUND	DL	8	6	0.0	5.3	0.0	0.0	40.0	0	5.3	6.7	1.2
1464+31.48	NORTHBOUND	DL	6	12	0.0	8.0	0.0	0.0	60.0	0	8.0	10.7	1.9
1465+31.80	NORTHBOUND	DL	6	6	4.0	0.0	0.0	0.0	36.0	0	4.0	5.3	1.0
1477+14.52	NORTHBOUND	DL	6	6	4.0	0.0	0.0	0.0	36.0	0	4.0	5.3	1.0
1482+53.08	NORTHBOUND	DL	6	12	0.0	8.0	0.0	0.0	60.0	0	8.0	10.7	1.9
1483+27.00	NORTHBOUND	DL,LWL	10	6	0.0	6.7	0.0	0.0	44.0	0	6.7	8.0	1.5
1491+66.52	NORTHBOUND	DL	6	6	4.0	0.0	0.0	0.0	36.0	0	4.0	5.3	1.0
1493+14.36	NORTHBOUND	DL	6	12	0.0	8.0	0.0	0.0	60.0	0	8.0	10.7	1.9
1493+14.36	NORTHBOUND	DL	6	12	0.0	8.0	0.0	0.0	60.0	0	8.0	10.7	1.9
1495+36.12	NORTHBOUND	DL,LWL	6	6	4.0	0.0	0.0	0.0	36.0	0	4.0	5.3	1.0
1501+96.12	NORTHBOUND	DL	8	6	0.0	5.3	0.0	0.0	40.0	0	5.3	6.7	1.2
1503+17.56	NORTHBOUND	DL	6	6	4.0	0.0	0.0	0.0	36.0	0	4.0	5.3	1.0
1507+50.52	NORTHBOUND	DL	15	6	0.0	10.0	0.0	0.0	54.0	0	10.0	11.3	2.1
1507+50.52	NORTHBOUND	RAMP	8	9	0.0	8.0	0.0	0.0	52.0	0	8.0	10.0	1.8
133+11.17	NORTHBOUND	DL	8	6	0.0	5.3	0.0	0.0	40.0	0	5.3	6.7	1.2
133+79.81	NORTHBOUND	DL	6	6	4.0	0.0	0.0	0.0	36.0	0	4.0	5.3	1.0
136+33.25	NORTHBOUND	DL	8	6	0.0	5.3	0.0	0.0	40.0	0	5.3	6.7	1.2
140+39.81	NORTHBOUND	DL	10	6	0.0	6.7	0.0	0.0	44.0	0	6.7	8.0	1.5
142+93.25	NORTHBOUND	DL	6	12	0.0	8.0	0.0	0.0	60.0	0	8.0	10.7	1.9
143+19.65	NORTHBOUND	DL,LWL	6	6	4.0	0.0	0.0	0.0	36.0	0	4.0	5.3	1.0
143+40.77	NORTHBOUND	DL	6	12	0.0	8.0	0.0	0.0	60.0	0	8.0	10.7	1.9
144+93.89	NORTHBOUND	DL	10	6	0.0	6.7	0.0	0.0	44.0	0	6.7	8.0	1.5
145+15.01	NORTHBOUND	DL	12	6	0.0	8.0	0.0	0.0	48.0	0	8.0	9.3	1.7
147+10.37	NORTHBOUND	DL	42	6	0.0	0.0	0.0	28.0	108.0	21	28.0	29.3	5.3
147+42.05	NORTHBOUND	DL	12	6	0.0	8.0	0.0	0.0	48.0	0	8.0	9.3	1.7
148+47.65	NORTHBOUND	DL	6	6	4.0	0.0	0.0	0.0	36.0	0	4.0	5.3	1.0
148+79.33	NORTHBOUND	DL	10	6	0.0	6.7	0.0	0.0	44.0	0	6.7	8.0	1.5
149+11.01	NORTHBOUND	DL	8	6	0.0	5.3	0.0	0.0	40.0	0	5.3	6.7	1.2
SHEET TOTALS					32.0 (sq. yd)	135.3 (sq. yd)	0.0 (sq. yd)	28.0 (sq. yd)	1334.0 (ft)	21.0 (Each)	195.3 (sq. yd)	241.3 (sq. yd)	43.9 (Tons)

PLOT DATE = 10/25/2006
 FILE NAME = c:\projects\05082006\08170567.tex\dgn
 PLOT SCALE = 42.3525' / IN.
 USER NAME = stults,j

REVISIONS	
NAME	DATE

ILLINOIS DEPARTMENT OF TRANSPORTATION

SCHEDULE OF QUANTITIES

SCALE: VERT. _____
 HORIZ. _____

DRAWN BY _____
 CHECKED BY _____

SCHEDULE OF QUANTITIES

CLASS A PATCHES

LOCATION #1 - I-57

F.A.I. RTE.	SECTION	COUNTY	TOTAL SHEETS	SHEET NO.
:	::	***	18	11
STA. _____		TO STA. _____		
FED. ROAD DIST. NO. _____		ILLINOIS FED. AID PROJECT		

- 57 & 74
- D5 ANNUAL PATCHING 2007-3
- CHAMPAIGN, DOUGLAS, & VERMILION

STATION	DIRECTION	LANE	LENGTH (ft)	WIDTH (ft)	PATCH AREA				SAW CUTS 44213200 (ft)	TIE BARS Z0075300 (Each)	PATCHING REINFORCEMENT 44213000 (sq. yd)	HMA REM OVER PATCH 3.25 44002213 (sq. yd)	HMA REPLACEMENT OVER PATCHES 40601005 (Tons)
					TYPE I 7" (sq. yd)	TYPE II 7" (sq. yd)	TYPE III 7" (sq. yd)	TYPE IV 7" (sq. yd)					
150+16.61	NORTHBOUND	PL	30	6	0.0	0.0	20.0	0.0	84.0	15	20.0	21.3	3.9
152+96.45	NORTHBOUND	PL	25	6	0.0	0.0	16.7	0.0	74.0	13	16.7	18.0	3.3
154+54.85	NORTHBOUND	DL,LWL	80	6	0.0	0.0	0.0	53.3	184.0	40	53.3	54.7	9.9
155+76.29	NORTHBOUND	DL,LWL	8	6	0.0	5.3	0.0	0.0	40.0	0	5.3	6.7	1.2
156+39.65	NORTHBOUND	DL	8	12	0.0	10.7	0.0	0.0	64.0	0	10.7	13.3	2.4
157+66.37	NORTHBOUND	DL	6	6	4.0	0.0	0.0	0.0	36.0	0	4.0	5.3	1.0
162+15.17	NORTHBOUND	DL,LWL	16	6	0.0	10.7	0.0	0.0	56.0	0	10.7	12.0	2.2
170+96.93	NORTHBOUND	DL	6	6	4.0	0.0	0.0	0.0	36.0	0	4.0	5.3	1.0
201+11.81	NORTHBOUND	DL	18	12	0.0	0.0	24.0	0.0	84.0	0	24.0	26.7	4.9
211+51.97	NORTHBOUND	DL	10	6	0.0	6.7	0.0	0.0	44.0	0	6.7	8.0	1.5
227+72.93	NORTHBOUND	DL	10	12	0.0	13.3	0.0	0.0	68.0	0	13.3	16.0	2.9
257+56.13	NORTHBOUND	DL	12	6	0.0	8.0	0.0	0.0	48.0	0	8.0	9.3	1.7
262+41.89	NORTHBOUND	DL	10	6	0.0	6.7	0.0	0.0	44.0	0	6.7	8.0	1.5
263+52.77	NORTHBOUND	DL	6	12	0.0	8.0	0.0	0.0	60.0	0	8.0	10.7	1.9
264+31.97	NORTHBOUND	DL,LWL	26	6	0.0	0.0	17.3	0.0	76.0	13	17.3	18.7	3.4
269+59.97	NORTHBOUND	DL	8	6	0.0	5.3	0.0	0.0	40.0	0	5.3	6.7	1.2
281+37.41	NORTHBOUND	DL	12	12	0.0	0.0	16.0	0.0	72.0	0	16.0	18.7	3.4
281+69.09	NORTHBOUND	DL	6	12	0.0	8.0	0.0	0.0	60.0	0	8.0	10.7	1.9
296+42.21	NORTHBOUND	DL,LWL	6	6	4.0	0.0	0.0	0.0	36.0	0	4.0	5.3	1.0
325+99.01	NORTHBOUND	DL,LWL	12	6	0.0	8.0	0.0	0.0	48.0	0	8.0	9.3	1.7
328+20.77	NORTHBOUND	DL	8	12	0.0	10.7	0.0	0.0	64.0	0	10.7	13.3	2.4
335+54.69	NORTHBOUND	DL	8	6	0.0	5.3	0.0	0.0	40.0	0	5.3	6.7	1.2
366+01.25	NORTHBOUND	DL	6	6	4.0	0.0	0.0	0.0	36.0	0	4.0	5.3	1.0
412+58.21	NORTHBOUND	DL	6	6	4.0	0.0	0.0	0.0	36.0	0	4.0	5.3	1.0
430+48.13	NORTHBOUND	DL	6	12	0.0	8.0	0.0	0.0	60.0	0	8.0	10.7	1.9
433+17.41	NORTHBOUND	DL	8	6	0.0	5.3	0.0	0.0	40.0	0	5.3	6.7	1.2
450+07.01	NORTHBOUND	PL	6	12	0.0	8.0	0.0	0.0	60.0	0	8.0	10.7	1.9
455+50.85	NORTHBOUND	DL	6	12	0.0	8.0	0.0	0.0	60.0	0	8.0	10.7	1.9
540+72.77	NORTHBOUND	DL,LWL	6	6	4.0	0.0	0.0	0.0	36.0	0	4.0	5.3	1.0
SHEET TOTALS					24.0 (sq. yd)	136.0 (sq. yd)	94.0 (sq. yd)	53.3 (sq. yd)	1686.0 (ft)	81.0 (Each)	307.3 (sq. yd)	359.3 (sq. yd)	65.4 (Tons)

PLOT DATE = 10/25/2006
 FILE NAME = c:\projects\458206 (v.8)\70567 text.dgn
 PLOT SCALE = 42.3525' / IN.
 USER NAME = stults,j

REVISIONS	
NAME	DATE

ILLINOIS DEPARTMENT OF TRANSPORTATION

SCHEDULE OF QUANTITIES

SCALE: VERT. _____
 HORIZ. _____

DRAWN BY _____
 CHECKED BY _____

SCHEDULE OF QUANTITIES

CLASS A PATCHES

LOCATION #1 - I-57

F.A.I. RTE.	SECTION	COUNTY	TOTAL SHEETS	SHEET NO.
:	::	***	18	12
STA. _____		TO STA. _____		
FED. ROAD DIST. NO. _____		ILLINOIS FED. AID PROJECT		

- 57 & 74
- D5 ANNUAL PATCHING 2007-3
- CHAMPAIGN, DOUGLAS, & VERMILION

STATION	DIRECTION	LANE	LENGTH (ft)	WIDTH (ft)	PATCH AREA				SAW CUTS 44213200 (ft)	TIE BARS Z0075300 (Each)	PATCHING REINFORCEMENT 44213000 (sq. yd)	HMA REM OVER PATCH 3.25 44002213 (sq. yd)	HMA REPLACEMENT OVER PATCHES 40601005 (Tons)
					TYPE I 8" (sq. yd)	TYPE II 8" (sq. yd)	TYPE III 8" (sq. yd)	TYPE IV 8" (sq. yd)					
547+69.73	NORTHBOUND	PL	6	6	4.0	0.0	0.0	0.0	36.0	0	4.0	5.3	1.0
547+69.73	NORTHBOUND	DL	8	12	0.0	10.7	0.0	0.0	64.0	0	10.7	13.3	2.4
558+99.65	NORTHBOUND	DL	10	6	0.0	6.7	0.0	0.0	44.0	0	6.7	8.0	1.5
559+47.17	NORTHBOUND	DL	18	6	0.0	12.0	0.0	0.0	60.0	0	12.0	13.3	2.4
562+63.97	NORTHBOUND	DL	40	6	0.0	0.0	0.0	26.7	104.0	20	26.7	28.0	5.1
563+11.49	NORTHBOUND	DL	6	12	0.0	8.0	0.0	0.0	60.0	0	8.0	10.7	1.9
581+38.37	NORTHBOUND	DL	8	6	0.0	5.3	0.0	0.0	40.0	0	5.3	6.7	1.2
581+85.89	NORTHBOUND	DL	12	6	0.0	8.0	0.0	0.0	48.0	0	8.0	9.3	1.7
582+01.73	NORTHBOUND	DL	6	6	4.0	0.0	0.0	0.0	36.0	0	4.0	5.3	1.0
582+22.85	NORTHBOUND	DL	14	6	0.0	9.3	0.0	0.0	52.0	0	9.3	10.7	1.9
584+34.05	NORTHBOUND	DL	10	6	0.0	6.7	0.0	0.0	44.0	0	6.7	8.0	1.5
656+51.81	NORTHBOUND	DL	6	6	4.0	0.0	0.0	0.0	36.0	0	4.0	5.3	1.0
660+47.81	NORTHBOUND	DL	14	6	0.0	9.3	0.0	0.0	52.0	0	9.3	10.7	1.9
661+74.53	NORTHBOUND	PL	8	6	0.0	5.3	0.0	0.0	40.0	0	5.3	6.7	1.2
670+03.49	NORTHBOUND	PL	6	6	4.0	0.0	0.0	0.0	36.0	0	4.0	5.3	1.0
686+77.25	NORTHBOUND	PL	8	6	0.0	5.3	0.0	0.0	40.0	0	5.3	6.7	1.2
686+93.09	NORTHBOUND	DL	14	6	0.0	9.3	0.0	0.0	52.0	0	9.3	10.7	1.9
688+14.53	NORTHBOUND	DL	6	12	0.0	8.0	0.0	0.0	60.0	0	8.0	10.7	1.9
688+25.09	NORTHBOUND	DL	8	12	0.0	10.7	0.0	0.0	64.0	0	10.7	13.3	2.4
739+83.65	NORTHBOUND	DL	10	6	0.0	6.7	0.0	0.0	44.0	0	6.7	8.0	1.5
745+38.05	NORTHBOUND	DL	6	6	4.0	0.0	0.0	0.0	36.0	0	4.0	5.3	1.0
745+53.89	NORTHBOUND	DL	8	6	0.0	5.3	0.0	0.0	40.0	0	5.3	6.7	1.2
747+01.73	NORTHBOUND	DL	8	6	0.0	5.3	0.0	0.0	40.0	0	5.3	6.7	1.2
756+52.13	NORTHBOUND	DL	6	12	0.0	8.0	0.0	0.0	60.0	0	8.0	10.7	1.9
832+18.37	NORTHBOUND	DL,LWL	6	6	4.0	0.0	0.0	0.0	36.0	0	4.0	5.3	1.0
SHEET TOTALS					24.0	140.0	0.0	26.7	1224.0	20.0	190.7	230.7	42.0
					(sq. yd)	(sq. yd)	(sq. yd)	(sq. yd)	(ft)	(Each)	(sq. yd)	(sq. yd)	(Tons)

PLOT DATE = 10/25/2006
 FILE NAME = c:\projects\4588206 (v.8)\70567 text.dgn
 PLOT SCALE = 42,352" / IN.
 USER NAME = stults,jr

REVISIONS	
NAME	DATE

ILLINOIS DEPARTMENT OF TRANSPORTATION

SCHEDULE OF QUANTITIES

SCALE: VERT. _____
 HORIZ. _____

DRAWN BY _____
 CHECKED BY _____

F.A.I. RTE.	SECTION	COUNTY	TOTAL SHEETS	SHEET NO.
:	::	:::	18	13
STA. _____		TO STA. _____		
FED. ROAD DIST. NO. _____		ILLINOIS	FED. AID PROJECT	

SCHEDULE OF QUANTITIES

CLASS A PATCHES

LOCATION #1 - I-57

- 57 & 74
- D5 ANNUAL PATCHING 2007-3
- CHAMPAIGN, DOUGLAS, & VERMILION

PATCH AREA				SAW CUTS	TIE BARS	PATCHING REINFORCEMENT	HMA REM OVER PATCH	HMA REPLACEMENT OVER PATCHES
TYPE I	TYPE II	TYPE III	TYPE IV					
7"	7"	7"	7"	44213200	Z0075300	44213000	3.25	40601005
(sq. yd)	(sq. yd)	(sq. yd)	(sq. yd)	(ft)	(Each)	(sq. yd)	(sq. yd)	(Tons)
92.0	383.0	144.0	119.0	4412.0	155.0	738.0	881.0	161.0
(sq. yd)	(sq. yd)	(sq. yd)	(sq. yd)	(ft)	(Each)	(sq. yd)	(sq. yd)	(Tons)

PATCH AREA				SAW CUTS	TIE BARS	PATCHING REINFORCEMENT	HMA REM OVER PATCH	HMA REPLACEMENT OVER PATCHES
TYPE I	TYPE II	TYPE III	TYPE IV					
8"	8"	8"	8"	44213200	Z0075300	44213000	3.25	40601005
(sq. yd)	(sq. yd)	(sq. yd)	(sq. yd)	(ft)	(Each)	(sq. yd)	(sq. yd)	(Tons)
24.0	140.0	0.0	27.0	1224.0	20.0	191.0	231.0	42.0
(sq. yd)	(sq. yd)	(sq. yd)	(sq. yd)	(ft)	(Each)	(sq. yd)	(sq. yd)	(Tons)

SAW CUTS	TIE BARS	PATCHING REINFORCEMENT	HMA REM OVER PATCH	HMA REPLACEMENT OVER PATCHES
44213200	Z0075300	44213000	3.25	40601005
(ft)	(Each)	(sq. yd)	(sq. yd)	(Tons)
5636.0	175.0	929.0	1112.0	203.0
(ft)	(Each)	(sq. yd)	(sq. yd)	(Tons)

PLOT DATE = 10/25/2006
 FILE NAME = c:\projects\458206 (b)\70567 text.dgn
 PLOT SCALE = 42,352" / IN.
 USER NAME = stults,j

REVISIONS	
NAME	DATE

ILLINOIS DEPARTMENT OF TRANSPORTATION

SCHEDULE OF QUANTITIES

SCALE: VERT.
HORIZ.
DATE

DRAWN BY
CHECKED BY

SCHEDULE OF QUANTITIES

CLASS A PATCHES

LOCATION #2 - I-57

F.A.I. RTE.	SECTION	COUNTY	TOTAL SHEETS	SHEET NO.
:	::	:::	18	14
STA. _____		TO STA. _____		
FED. ROAD DIST. NO. _____		ILLINOIS FED. AID PROJECT		

- 57 & 74
- D5 ANNUAL PATCHING 2007-3
- CHAMPAIGN, DOUGLAS, & VERMILION

STATION	DIRECTION	LANE	LENGTH (ft)	WIDTH (ft)	PATCH AREA				SAW CUTS 44213200 (ft)	TIE BARS Z0075300 (Each)	PATCHING REINFORCEMENT 44213000 (sq. yd)	HMA REM OVER PATCH 3.25 44002213 (sq. yd)	HMA REPLACEMENT OVER PATCHES 40601005 (Tons)
					TYPE I 7" (sq. yd)	TYPE II 7" (sq. yd)	TYPE III 7" (sq. yd)	TYPE IV 7" (sq. yd)					
1019+40.40	NORTHBOUND	DL	6	6	4.0	0.0	0.0	0.0	36.0	0	4.0	5.3	1.0
1021+51.60	NORTHBOUND	DL	8	6	0.0	5.3	0.0	0.0	40.0	0	5.3	6.7	1.2
1022+04.40	NORTHBOUND	DL	6	6	4.0	0.0	0.0	0.0	36.0	0	4.0	5.3	1.0
1022+57.20	NORTHBOUND	DL	6	6	4.0	0.0	0.0	0.0	36.0	0	4.0	5.3	1.0
1026+79.60	NORTHBOUND	DL	6	6	4.0	0.0	0.0	0.0	36.0	0	4.0	5.3	1.0
1031+54.80	NORTHBOUND	DL	6	6	4.0	0.0	0.0	0.0	36.0	0	4.0	5.3	1.0
1032+07.60	NORTHBOUND	DL	6	6	4.0	0.0	0.0	0.0	36.0	0	4.0	5.3	1.0
1036+82.80	NORTHBOUND	DL	6	6	4.0	0.0	0.0	0.0	36.0	0	4.0	5.3	1.0
1038+94.00	NORTHBOUND	DL	6	6	4.0	0.0	0.0	0.0	36.0	0	4.0	5.3	1.0
1050+55.60	NORTHBOUND	DL	6	6	4.0	0.0	0.0	0.0	36.0	0	4.0	5.3	1.0
1055+83.60	NORTHBOUND	DL	6	6	4.0	0.0	0.0	0.0	36.0	0	4.0	5.3	1.0
1056+33.60	NORTHBOUND	DL	6	6	4.0	0.0	0.0	0.0	36.0	0	4.0	5.3	1.0
1063+22.80	NORTHBOUND	DL	6	6	4.0	0.0	0.0	0.0	36.0	0	4.0	5.3	1.0
1063+75.60	NORTHBOUND	DL	10	6	0.0	6.7	0.0	0.0	44.0	0	6.7	8.0	1.5
1068+50.80	NORTHBOUND	DL	6	6	4.0	0.0	0.0	0.0	36.0	0	4.0	5.3	1.0
1074+84.40	NORTHBOUND	DL	6	6	4.0	0.0	0.0	0.0	36.0	0	4.0	5.3	1.0
1075+37.20	NORTHBOUND	DL	6	6	4.0	0.0	0.0	0.0	36.0	0	4.0	5.3	1.0
1076+95.60	NORTHBOUND	DL	6	6	4.0	0.0	0.0	0.0	36.0	0	4.0	5.3	1.0
1078+01.20	NORTHBOUND	DL	6	6	4.0	0.0	0.0	0.0	36.0	0	4.0	5.3	1.0
1083+29.20	NORTHBOUND	DL	6	6	4.0	0.0	0.0	0.0	36.0	0	4.0	5.3	1.0
1085+40.40	NORTHBOUND	DL	6	6	4.0	0.0	0.0	0.0	36.0	0	4.0	5.3	1.0
1112+33.20	NORTHBOUND	DL	6	12	0.0	8.0	0.0	0.0	60.0	0	8.0	10.7	1.9
1118+66.80	NORTHBOUND	DL	6	6	4.0	0.0	0.0	0.0	36.0	0	4.0	5.3	1.0
1119+72.40	NORTHBOUND	DL	6	6	4.0	0.0	0.0	0.0	36.0	0	4.0	5.3	1.0
1122+89.20	NORTHBOUND	DL	6	12	0.0	8.0	0.0	0.0	60.0	0	8.0	10.7	1.9
SHEET TOTALS					84.0 (sq. yd)	28.0 (sq. yd)	0.0 (sq. yd)	0.0 (sq. yd)	960.0 (ft)	0.0 (Each)	112.0 (sq. yd)	148.0 (sq. yd)	26.9 (Tons)

PLOT DATE = 10/25/2006
 FILE NAME = c:\projects\4588206 (v.8)\70567 text.dgn
 PLOT SCALE = 42,352" / IN.
 USER NAME = stults,jr

REVISIONS	
NAME	DATE

ILLINOIS DEPARTMENT OF TRANSPORTATION

SCHEDULE OF QUANTITIES

SCALE: VERT. _____
 HORIZ. _____

DRAWN BY _____
 CHECKED BY _____

F.A.I. RTE.	SECTION	COUNTY	TOTAL SHEETS	SHEET NO.
:	::	:::	18	15
STA. _____		TO STA. _____		
FED. ROAD DIST. NO. _____		ILLINOIS FED. AID PROJECT		

SCHEDULE OF QUANTITIES

CLASS A PATCHES

LOCATION #2 - I-57

- 57 & 74
- D5 ANNUAL PATCHING 2007-3
- CHAMPAIGN, DOUGLAS, & VERMILION

STATION	DIRECTION	LANE	LENGTH (ft)	WIDTH (ft)	PATCH AREA				SAW CUTS 44213200 (ft)	TIE BARS Z0075300 (Each)	PATCHING REINFORCEMENT 44213000 (sq. yd)	HMA REM OVER PATCH 3.25 44002213 (sq. yd)	HMA REPLACEMENT OVER PATCHES 40601005 (Tons)
					TYPE I 7" (sq. yd)	TYPE II 7" (sq. yd)	TYPE III 7" (sq. yd)	TYPE IV 7" (sq. yd)					
1126+58.80	NORTHBOUND	DL	6	6	4.0	0.0	0.0	0.0	36.0	0	4.0	5.3	1.0
1127+11.60	NORTHBOUND	DL	6	6	4.0	0.0	0.0	0.0	36.0	0	4.0	5.3	1.0
1128+17.20	NORTHBOUND	DL	6	6	4.0	0.0	0.0	0.0	36.0	0	4.0	5.3	1.0
1147+18.00	NORTHBOUND	DL	6	6	4.0	0.0	0.0	0.0	36.0	0	4.0	5.3	1.0
1155+62.80	NORTHBOUND	DL	6	6	4.0	0.0	0.0	0.0	36.0	0	4.0	5.3	1.0
1177+80.40	NORTHBOUND	DL	6	6	4.0	0.0	0.0	0.0	36.0	0	4.0	5.3	1.0
1186+25.20	NORTHBOUND	DL	6	6	4.0	0.0	0.0	0.0	36.0	0	4.0	5.3	1.0
1187+30.80	NORTHBOUND	DL	6	6	4.0	0.0	0.0	0.0	36.0	0	4.0	5.3	1.0
1207+90.00	NORTHBOUND	DL	6	6	4.0	0.0	0.0	0.0	36.0	0	4.0	5.3	1.0
1222+68.40	NORTHBOUND	DL	6	6	4.0	0.0	0.0	0.0	36.0	0	4.0	5.3	1.0
1232+18.80	NORTHBOUND	DL	6	6	4.0	0.0	0.0	0.0	36.0	0	4.0	5.3	1.0
1249+61.20	NORTHBOUND	DL	6	6	4.0	0.0	0.0	0.0	36.0	0	4.0	5.3	1.0
1250+14.00	NORTHBOUND	DL	6	6	4.0	0.0	0.0	0.0	36.0	0	4.0	5.3	1.0
SHEET TOTALS					52.0 (sq. yd)	0.0 (sq. yd)	0.0 (sq. yd)	0.0 (sq. yd)	468.0 (ft)	0.0 (Each)	52.0 (sq. yd)	69.3 (sq. yd)	12.6 (Tons)

CLASS A PATCHING TOTALS

LOCATION #2 - I-57

PATCH AREA				SAW CUTS 44213200 (ft)	TIE BARS Z0075300 (Each)	PATCHING REINFORCEMENT 44213000 (sq. yd)	HMA REM OVER PATCH 3.25 44002213 (sq. yd)	HMA REPLACEMENT OVER PATCHES 40601005 (Tons)
TYPE I 7" (sq. yd)	TYPE II 7" (sq. yd)	TYPE III 7" (sq. yd)	TYPE IV 7" (sq. yd)					
136.0 (sq. yd)	28.0 (sq. yd)	0.0 (sq. yd)	0.0 (sq. yd)	1428.0 (ft)	0.0 (Each)	164.0 (sq. yd)	128.0 (sq. yd)	40.0 (Tons)

PLOT DATE = 10/25/2006
 FILE NAME = c:\projects\458206 (v.8)\70567 text.dgn
 PLOT SCALE = 42,352" / IN.
 USER NAME = stults,j

REVISIONS	
NAME	DATE

ILLINOIS DEPARTMENT OF TRANSPORTATION

SCHEDULE OF QUANTITIES

SCALE: VERT.
HORIZ.
DATE

DRAWN BY
CHECKED BY

F.A.I. RTE.	SECTION	COUNTY	TOTAL SHEETS	SHEET NO.
:	::	:::	18	16
STA. _____		TO STA. _____		
FED. ROAD DIST. NO. _____		ILLINOIS	FED. AID PROJECT	

SCHEDULE OF QUANTITIES

CLASS A PATCHING TOTALS

LOCATION #1 AND LOCATION #2 - I-57

- 57 & 74
- D5 ANNUAL PATCHING 2007-3
- CHAMPAIGN, DOUGLAS, & VERMILION

PATCH AREA				SAW CUTS	TIE BARS	PATCHING REINFORCEMENT	HMA REM OVER PATCH	HMA REPLACEMENT OVER PATCHES
TYPE I	TYPE II	TYPE III	TYPE IV					
7"	7"	7"	7"	44213200	Z0075300	44213000	3.25	40601005
(sq. yd)	(sq. yd)	(sq. yd)	(sq. yd)	(ft)	(Each)	(sq. yd)	(sq. yd)	(Tons)
228.0	411.0	144.0	119.0	5840.0	155.0	902.0	1009.0	201.0
(sq. yd)	(sq. yd)	(sq. yd)	(sq. yd)	(ft)	(Each)	(sq. yd)	(sq. yd)	(Tons)

PATCH AREA				SAW CUTS	TIE BARS	PATCHING REINFORCEMENT	HMA REM OVER PATCH	HMA REPLACEMENT OVER PATCHES
TYPE I	TYPE II	TYPE III	TYPE IV					
8"	8"	8"	8"	44213200	Z0075300	44213000	3.25	40601005
(sq. yd)	(sq. yd)	(sq. yd)	(sq. yd)	(ft)	(Each)	(sq. yd)	(sq. yd)	(Tons)
24.0	140.0	0.0	27.0	1224.0	20.0	191.0	231.0	42.0
(sq. yd)	(sq. yd)	(sq. yd)	(sq. yd)	(ft)	(Each)	(sq. yd)	(sq. yd)	(Tons)

SAW CUTS	TIE BARS	PATCHING REINFORCEMENT	HMA REM OVER PATCH	HMA REPLACEMENT OVER PATCHES
44213200	Z0075300	44213000	3.25	40601005
(ft)	(Each)	(sq. yd)	(sq. yd)	(Tons)
7064.0	175.0	1093.0	1240.0	243.0
(ft)	(Each)	(sq. yd)	(sq. yd)	(Tons)

PLOT DATE = 10/25/2006
 FILE NAME = c:\projects\458206 (v8)\70567 text.dgn
 PLOT SCALE = 42,352" / IN.
 USER NAME = stults,j

REVISIONS	
NAME	DATE

ILLINOIS DEPARTMENT OF TRANSPORTATION

SCHEDULE OF QUANTITIES

SCALE: VERT.
HORIZ.
DATE

DRAWN BY
CHECKED BY

F.A.I. RTE.	SECTION	COUNTY	TOTAL SHEETS	SHEET NO.
:	::	:::	18	17
STA. _____		TO STA. _____		
FED. ROAD DIST. NO. _____		ILLINOIS FED. AID PROJECT		

SCHEDULE OF QUANTITIES

CLASS B PATCHES

LOCATION #3 - I-74

- 57 & 74
- D5 ANNUAL PATCHING 2007-3
- CHAMPAIGN, DOUGLAS, & VERMILION

STATION	DIRECTION	LANE	LENGTH (ft)	WIDTH (ft)	PATCH AREA				DOWEL BARS Z0017100 (Each)	SAW CUTS 44213200 (ft)	TIE BARS Z0075300 (Each)	PAVEMENT FABRIC 44213100 (sq. yd)	HMA REM OVER PATCH 5 44002220 (sq. yd)	HMA REPLACEMENT OVER PATCHES 40601005 (Tons)
					TYPE I 10" (sq. yd)	TYPE II 10" (sq. yd)	TYPE III 10" (sq. yd)	TYPE IV 10" (sq. yd)						
1240+12.00	EASTBOUND	DL	6	12	0.0	8.0	0.0	0.0	20	48.0	0	0.0	10.7	3.0
1240+12.00	EASTBOUND	PL	6	12	0.0	8.0	0.0	0.0	20	48.0	0	0.0	10.7	3.0
1240+82.00	EASTBOUND	PL	15	12	0.0	0.0	20.0	0.0	20	66.0	8	20.0	22.7	6.3
1241+46.00	EASTBOUND	DL	8	12	0.0	10.7	0.0	0.0	20	52.0	0	0.0	13.3	3.7
1241+68.00	EASTBOUND	DL	10	12	0.0	13.3	0.0	0.0	20	56.0	0	0.0	16.0	4.5
1319+51.00	EASTBOUND	DL	6	12	0.0	8.0	0.0	0.0	20	48.0	0	0.0	10.7	3.0
1319+70.00	EASTBOUND	DL	6	12	0.0	8.0	0.0	0.0	20	48.0	0	0.0	10.7	3.0
1321+81.00	EASTBOUND	DL	20	12	0.0	0.0	0.0	26.7	20	76.0	10	26.7	29.3	8.2
1414+33.00	EASTBOUND	DL	12	12	0.0	0.0	16.0	0.0	20	60.0	0	16.0	18.7	5.2
1698+94.00	EASTBOUND	DL	8	12	0.0	10.7	0.0	0.0	20	52.0	0	0.0	13.3	3.7
1698+94.00	EASTBOUND	PL	8	12	0.0	10.7	0.0	0.0	20	52.0	0	0.0	13.3	3.7
1698+94.00	EASTBOUND	RAMP 210	8	12	0.0	10.7	0.0	0.0	20	52.0	0	0.0	13.3	3.7
1632+87.00	WESTBOUND	DL	8	12	0.0	10.7	0.0	0.0	20	52.0	0	0.0	13.3	3.7
1632+87.00	WESTBOUND	PL	8	12	0.0	10.7	0.0	0.0	20	52.0	0	0.0	13.3	3.7
1627+79.00	WESTBOUND	DL	6	12	0.0	8.0	0.0	0.0	20	48.0	0	0.0	10.7	3.0
1627+79.00	WESTBOUND	PL	6	12	0.0	8.0	0.0	0.0	20	48.0	0	0.0	10.7	3.0
1627+37.00	WESTBOUND	WB	6	12	0.0	8.0	0.0	0.0	20	48.0	0	0.0	10.7	3.0
1626+37.00	WESTBOUND	WB	6	12	0.0	8.0	0.0	0.0	20	48.0	0	0.0	10.7	3.0
1625+35.00	WESTBOUND	DL	6	12	0.0	8.0	0.0	0.0	20	48.0	0	0.0	10.7	3.0
1412+44.00	WESTBOUND	WB	15	12	0.0	0.0	20.0	0.0	20	66.0	8	20.0	22.7	6.3
SHEET TOTALS					0.0 (sq. yd)	149.3 (sq. yd)	56.0 (sq. yd)	26.7 (sq. yd)	400 (Each)	1068.0 (ft)	26.0 (Each)	82.7 (sq. yd)	285.3 (sq. yd)	79.9 (Tons)

CLASS B PATCHING TOTALS

LOCATION #3 - I-74

PATCH AREA				DOWEL BARS Z0017100 (Each)	SAW CUTS 44213200 (ft)	TIE BARS Z0075300 (Each)	PAVEMENT FABRIC 44213100 (sq. yd)	HMA REM OVER PATCH 5 44002220 (sq. yd)	HMA REPLACEMENT OVER PATCHES 40601005 (Tons)
TYPE I 10" (sq. yd)	TYPE II 10" (sq. yd)	TYPE III 10" (sq. yd)	TYPE IV 10" (sq. yd)						
0.0 (sq. yd)	150.0 (sq. yd)	56.0 (sq. yd)	27.0 (sq. yd)	400 (Each)	1068.0 (ft)	26.0 (Each)	83.0 (sq. yd)	286.0 (sq. yd)	80.0 (Tons)

REVISIONS	
NAME	DATE

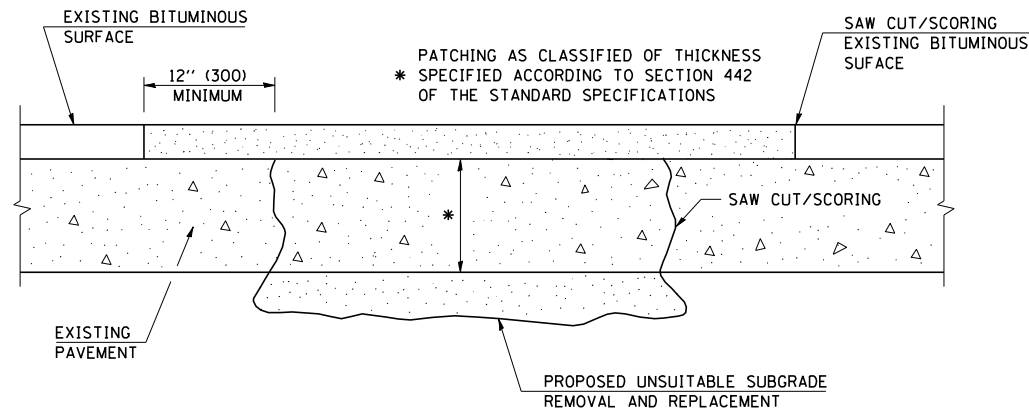
ILLINOIS DEPARTMENT OF TRANSPORTATION

SCHEDULE OF QUANTITIES

SCALE: VERT.
HORIZ.
DATE

DRAWN BY
CHECKED BY

PATCHING WITH HOT-MIX ASPHALT OVERLAY REMOVAL



SEQUENCE OF CONSTRUCTION

1. REMOVE THE EXISTING HOT-MIX ASPHALT.
2. REMOVE AND REPLACE FULL DEPTH PATCHES.
3. REPLACE HOT-MIX ASPHALT.

GENERAL NOTES

1. THE WIDTH OF THE FULL DEPTH PATCH OVER A TRENCH SHALL BE 12" (300) WIDER ON EACH SIDE OF THE TRENCH.
2. FOR BASIS OF PAYMENT SEE RECURRING SPECIAL PROVISION "PATCHING WITH HOT-MIX ASPHALT OVERLAY REMOVAL", CHECK SHEET *16.

	NAME	DATE	REVISIONS	
			NAME	DATE
DESIGNED	T.J.B.	8/06		
CHECKED				
CADD NO.	40601005			

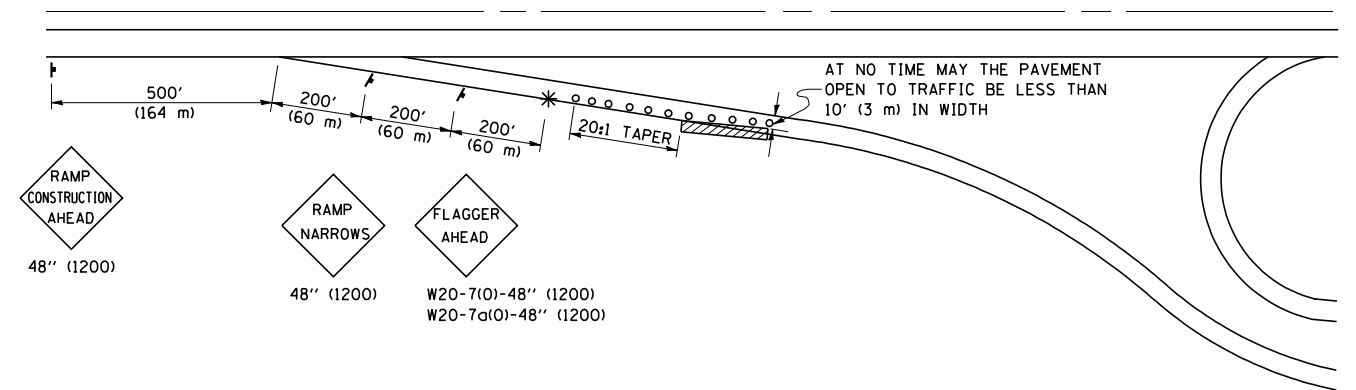
ALL DIMENSIONS ARE IN INCHES (MILLIMETERS) UNLESS OTHERWISE SHOWN.

F.A.I. RTE.	SECTION	COUNTY	TOTAL SHEETS	SHEET NO.
:	::	:::	18	18

CONTRACT 70567
 • 57 & 74
 •• D5 ANNUAL PATCHING 2007-3
 ••• CHAMPAIGN, DOUGLAS, & VERMILION

SPECIAL DETAIL FOR RAMP WORK AREAS

TYPICAL APPLICATION OF TRAFFIC CONTROL DEVICES



SYMBOLS

- o TYPE I OR II BARRICADES OR DRUMS @ 50' (15 m) CTS.
- * FLAGGER PLACED AS DIRECTED BY THE ENGINEER
- † SIGN ON PORTABLE OR PERMANENT SUPPORT
- ▨ WORK AREA

GENERAL NOTES

1. CONSTRUCTION OPERATIONS SHALL BE CONFINED TO AN AREA NARROW ENOUGH THAT A MINIMUM OF 10' (3 m) OF PAVEMENT SHALL BE OPEN TO TRAFFIC AT ALL TIMES.
2. CONES MAY BE SUBSTITUTED FOR BARRICADES DURING DAY OPERATIONS, AT 25' (7.5 m) SPACING.
3. FULL WIDTH PAVEMENT ON THE RAMPS SHALL BE OPEN TO TRAFFIC AT NIGHT.
4. WHEN NO WORK IS BEING PERFORMED, THE FLAGGER WILL NOT BE REQUIRED. IF THE FLAGGER IS NOT PRESENT, THE FLAGGER SIGNS SHALL BE REMOVED OR COVERED.
5. ALL SIGNS SHALL BE POST MOUNTED IF WORK IN THE AREA EXCEEDS FOUR DAYS OF DAYTIME OPERATIONS.
6. LONGITUDINAL DIMENSIONS MAY BE ADJUSTED SLIGHTLY TO FIT FIELD CONDITIONS.
7. ALL VEHICLES, EQUIPMENT, WORKERS (EXCEPT FLAGGER) AND THEIR ACTIVITIES ARE RESTRICTED AT ALL TIMES TO ONE SIDE OF THE PAVEMENT UNLESS OTHERWISE AUTHORIZED BY THE DISTRICT ENGINEER.

	NAME	DATE	REVISIONS	
			NAME	DATE
DESIGNED	D.L.P.	3-95		
CHECKED			D.L.P.	08/00
CADD NO.	F-5.01		K.A.G.	01/05

ALL DIMENSIONS ARE IN INCHES (MILLIMETERS) UNLESS OTHERWISE SHOWN.