

F.A.I. RTE.	SECTION	COUNTY	TOTAL SHEETS	SHEET NO.
72	D-6 ITS #2	SANGAMON	30	1

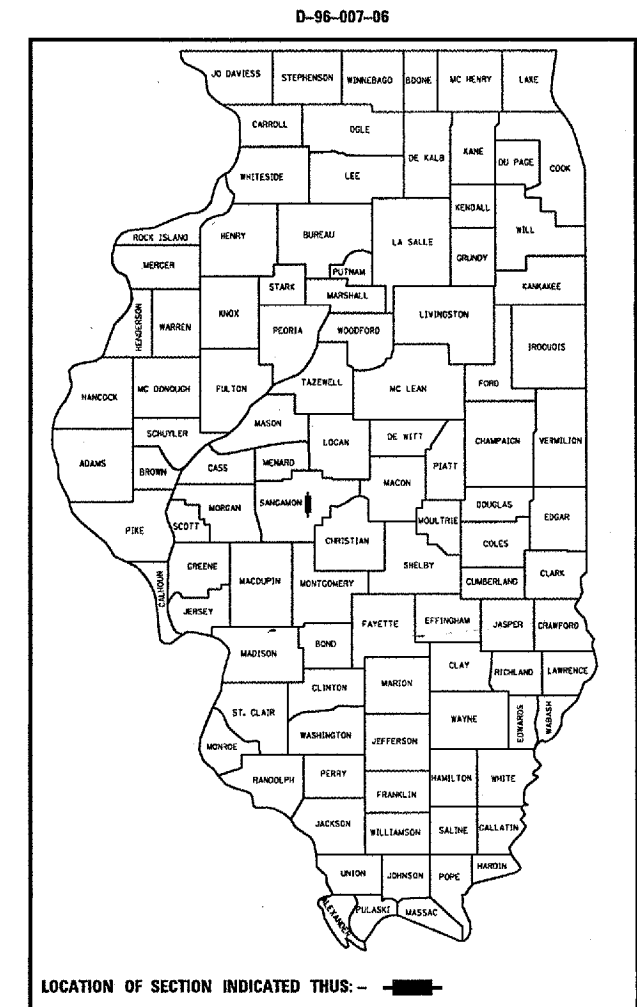
STATE OF ILLINOIS
DEPARTMENT OF TRANSPORTATION
DIVISION OF HIGHWAYS

PROPOSED HIGHWAY PLANS

FAI ROUTE 72 (I-72)
SECTION D-6 ITS #2
PROJECT: ITS-0517(105)
SANGAMON COUNTY
C-75-017-06

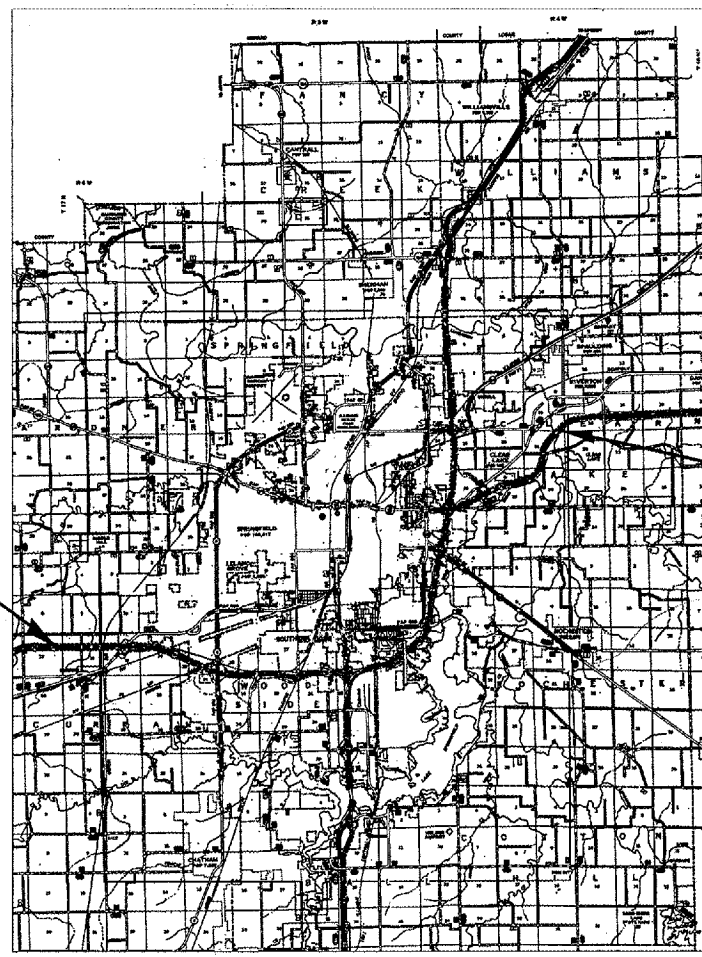
INDEX OF SHEETS

- 1 COVER SHEET
- 2 LOCATION MAP
- 3 SUMMARY OF QUANTITIES
- 4 GENERAL NOTES AND LEGEND
- 5 CAMERA 1 PLAN VIEW
- 6 DMS 1 PLAN VIEW
- 7 DMS 2 PLAN VIEW
- 8-12 I-72 FIBER OPTIC PLAN VIEW
- 13 OVERHEAD SIGN STRUCTURE PLAN
- 14-23 OVERHEAD SIGN STRUCTURE DETAILS
- 24 INERTIAL BARRIER INSTALLATION DETAILS
- 25 FIBER OPTIC SYSTEM SCHEMATIC
- 26 CCTV CAMERA & MOUNTING EQUIPMENT
- 27 DMS MOUNTING AND WIRING DETAILS
- 28-30 SOIL BORING LOGS



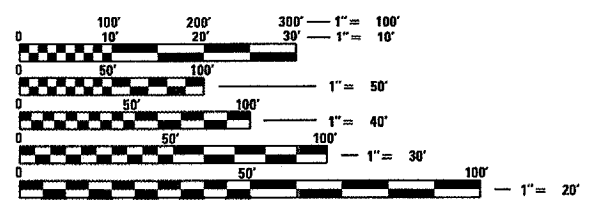
STANDARDS

- 000001-04
- 701101-01
- 701106-01
- 701400-02
- 701401-03
- 701422-01
- 702001-06



END PROJECT
SECTION: D-6 ITS #2
STATION 467+50 english

BEGIN PROJECT
SECTION: D-6 ITS #2
STA. 171+700 metric



FULL SIZE PLANS HAVE BEEN PREPARED USING STANDARD ENGINEERING SCALES. REDUCED SIZED PLANS WILL NOT CONFORM TO STANDARD SCALES. IN MAKING MEASUREMENTS ON REDUCED PLANS, THE ABOVE SCALES MAY BE USED.

J.U.L.I.E.
JOINT UTILITY LOCATION INFORMATION FOR EXCAVATION
1-800-892-0123

PROJECT ENGINEER: KYLE ARMSTRONG (217) 558-6523
SQUAD LEADER: BILL SHAW (217) 524-2180

STATE OF ILLINOIS
DEPARTMENT OF TRANSPORTATION
DIVISION OF HIGHWAYS

SUBMITTED Oct 20 20 06

[Signature]
DEPUTY DIRECTOR OF HIGHWAYS, REGION ENGINEER

December 8, 2006
[Signature]
INTERIM ENGINEER OF DESIGN AND ENVIRONMENT

December 8, 2006
[Signature]
DIRECTOR OF HIGHWAYS, CHIEF ENGINEER

PRINTED BY THE AUTHORITY
OF THE STATE OF ILLINOIS