

F.A.P. RTE.	SECTION	COUNTY	TOTAL SHEETS	SHEET NO.
774	(107) LS	EFFINGHAM	8	1
FED. ROAD DIST. NO.		ILLINOIS FED. AID PROJECT		

CONTRACT NO. 74127

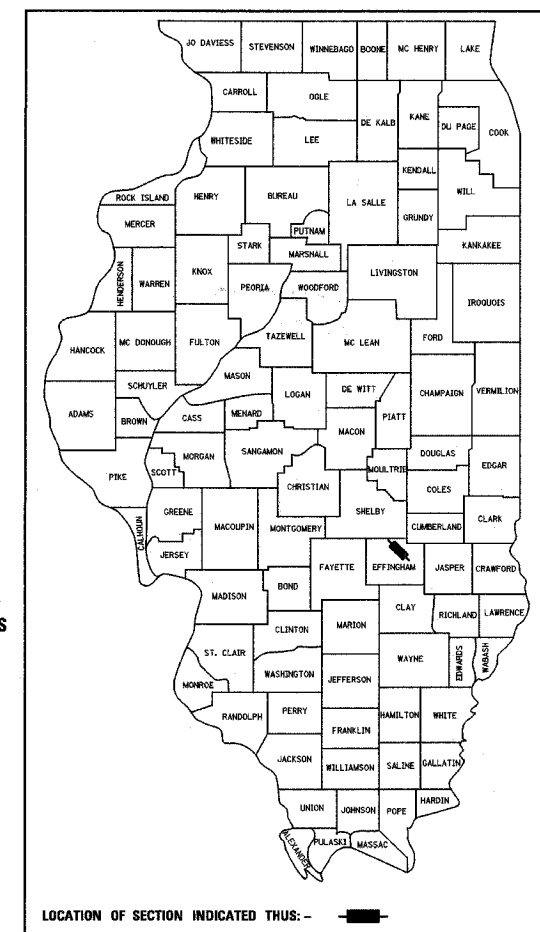
D-97-001-06

STATE OF ILLINOIS
DEPARTMENT OF TRANSPORTATION
DIVISION OF HIGHWAYS

PLANS FOR PROPOSED FEDERAL HIGHWAY PROJECT

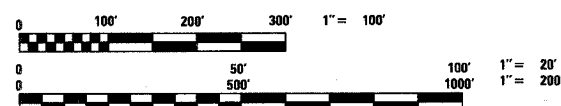
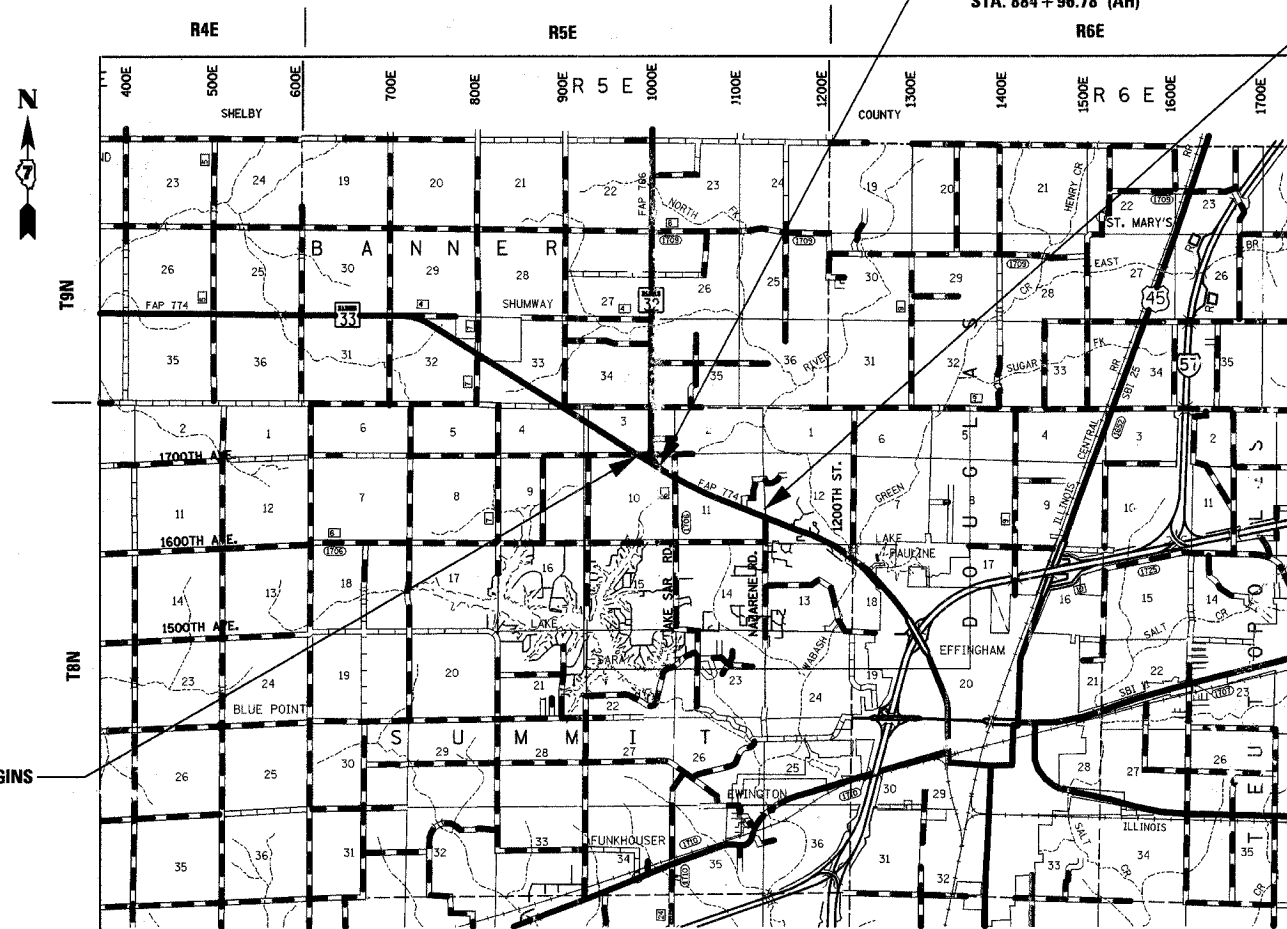
FOR INDEX OF SHEETS, SEE SHEET NO 2
FOR SUMMARY OF QUANTITIES, SEE SHEET NO 3

F.A.P. ROUTE 774 (ILLINOIS ROUTE 32/33)
SECTION (107) LS
PROJECT: F-0774-(028)
EFFINGHAM COUNTY
C-97-003-06



STATION EQUATION
STA. 559 + 19.18 (BK) =
STA. 884 + 96.78 (AH)

PROPOSED IMPROVEMENT ENDS
STA. 942 + 50.00



FULL SIZE PLANS HAVE BEEN PREPARED USING STANDARD ENGINEERING SCALES, REDUCED SIZED PLANS WILL NOT CONFORM TO STANDARD SCALES, IN MAKING MEASUREMENTS ON REDUCED PLANS, THE ABOVE SCALES MAY BE USED.

FOR UNDERGROUND UTILITY LOCATIONS CALL J.U.L.I.E. TOLL FREE 1-800-892-0123 SUMMIT TOWNSHIP

PROPOSED IMPROVEMENT BEGINS
STA. 541 + 93.85

STATE OF ILLINOIS
DEPARTMENT OF TRANSPORTATION
DIVISION OF HIGHWAYS

SUBMITTED 10-19 20 06

Christine M. Reed
DEPUTY DIRECTOR OF HIGHWAYS, REGION ENGINEER

20

ENGINEER OF PROJECT DEVELOPMENT AND IMPLEMENTATION
December 8, 2006
Eric E. Haran
INTERIM ENGINEER OF DESIGN AND ENVIRONMENT

December 8, 2006
Milton R. Seep, P.E.
DIRECTOR, DIVISION OF HIGHWAYS



Sheila J. Kimlinger
SHEILA J. KIMLINGER, P.E.
DATE: 12-7-2006
EXPIRES: 11/30/2007

FRWA _____ 20 _____
DIVISION ADMINISTRATOR

PRINTED BY AUTHORITY
OF THE STATE OF ILLINOIS

PROJECT ENGINEER: BILL STANLEY
SQUAD LEADER:
TELEPHONE: 217-342-8320

CONTRACT NO. 74127
SUMMIT TOWNSHIP

LOCATION MAP

GROSS AND NET LENGTH OF PROJECT = 7,379 FT. = 1.40 MILES