

F.A.P. RTE.	SECTION	COUNTY	TOTAL SHEETS	SHEET NO.
774	(107) LS	EFFINGHAM	8	1
FED. ROAD DIST. NO.		ILLINOIS FED. AID PROJECT		

CONTRACT NO. 74127

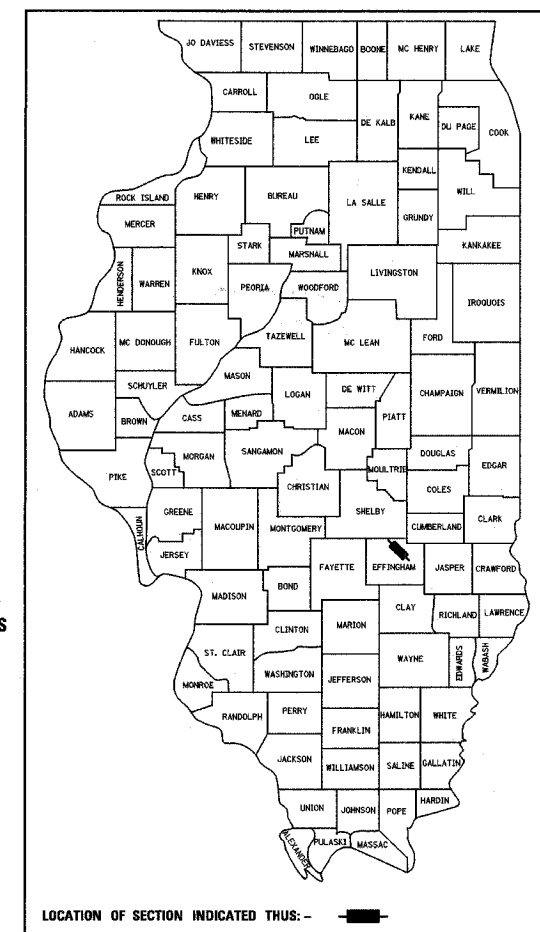
D-97-001-06

STATE OF ILLINOIS  
DEPARTMENT OF TRANSPORTATION  
DIVISION OF HIGHWAYS

# PLANS FOR PROPOSED FEDERAL HIGHWAY PROJECT

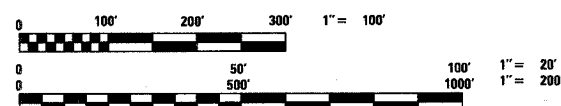
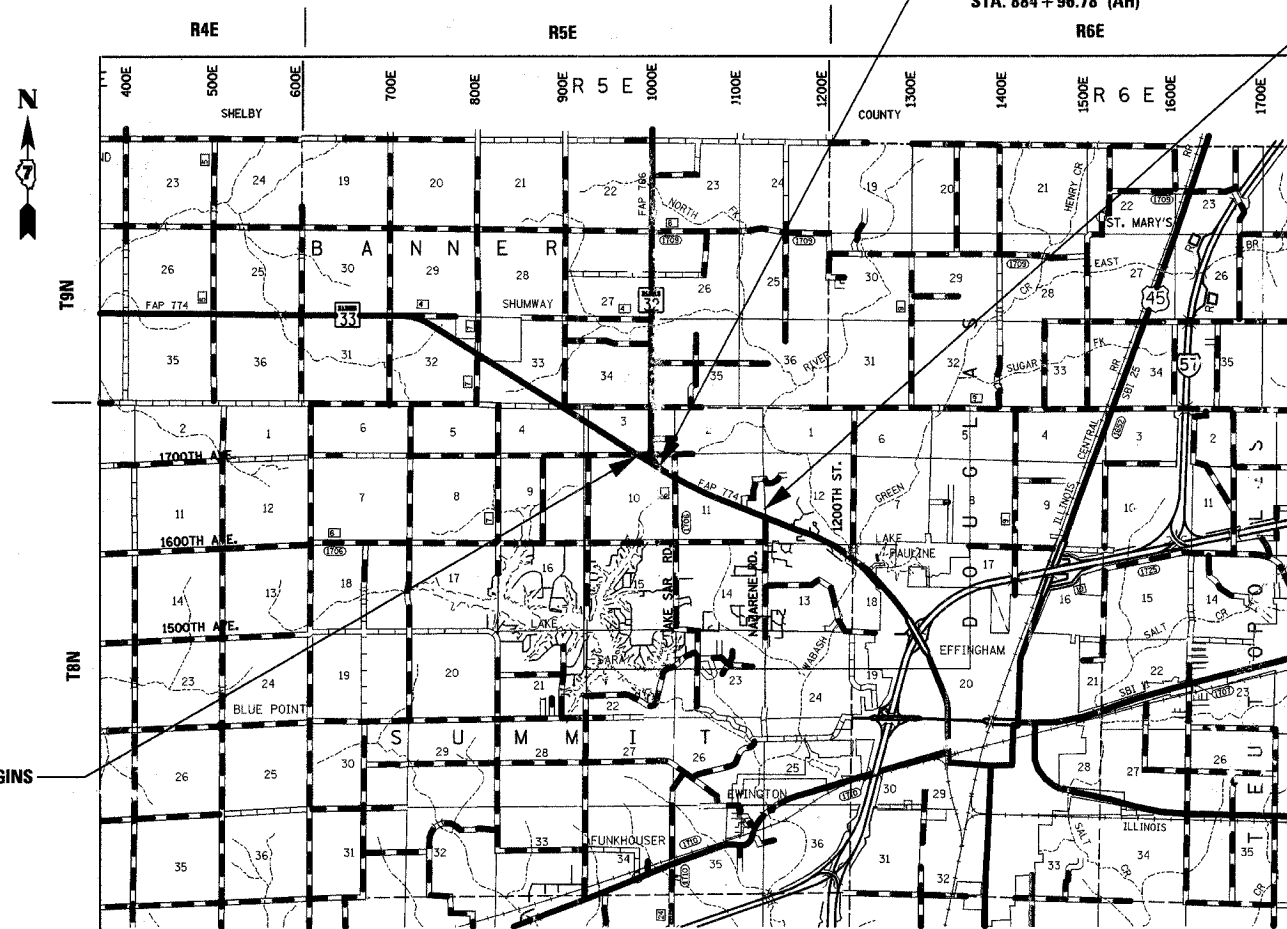
FOR INDEX OF SHEETS, SEE SHEET NO 2  
FOR SUMMARY OF QUANTITIES, SEE SHEET NO 3

F.A.P. ROUTE 774 (ILLINOIS ROUTE 32/33)  
SECTION (107) LS  
PROJECT: F-0774-(028)  
EFFINGHAM COUNTY  
C-97-003-06



STATION EQUATION  
STA. 559 + 19.18 (BK) =  
STA. 884 + 96.78 (AH)

PROPOSED IMPROVEMENT ENDS  
STA. 942 + 50.00



FULL SIZE PLANS HAVE BEEN PREPARED USING STANDARD ENGINEERING SCALES, REDUCED SIZED PLANS WILL NOT CONFORM TO STANDARD SCALES, IN MAKING MEASUREMENTS ON REDUCED PLANS, THE ABOVE SCALES MAY BE USED.

FOR UNDERGROUND UTILITY LOCATIONS CALL J.U.L.I.E. TOLL FREE 1-800-892-0123 SUMMIT TOWNSHIP

PROPOSED IMPROVEMENT BEGINS  
STA. 541 + 93.85

STATE OF ILLINOIS  
DEPARTMENT OF TRANSPORTATION  
DIVISION OF HIGHWAYS

SUBMITTED 10-19 20 06

*Christine M. Reed*  
DEPUTY DIRECTOR OF HIGHWAYS, REGION ENGINEER

20

ENGINEER OF PROJECT DEVELOPMENT AND IMPLEMENTATION  
December 8, 2006  
*Eric E. Haran*  
INTERIM ENGINEER OF DESIGN AND ENVIRONMENT

20  
December 8, 2006  
*Milton R. Seep, P.E.*  
DIRECTOR, DIVISION OF HIGHWAYS



*Sheila J. Kimlinger*  
SHEILA J. KIMLINGER, P.E.  
DATE: 12-7-2006  
EXPIRES: 11/30/2007

FRWA \_\_\_\_\_ 20 \_\_\_\_\_  
DIVISION ADMINISTRATOR

PRINTED BY AUTHORITY  
OF THE STATE OF ILLINOIS

PROJECT ENGINEER: BILL STANLEY  
SQUAD LEADER:  
TELEPHONE: 217-342-8320

CONTRACT NO. 74127  
SUMMIT TOWNSHIP

LOCATION MAP

GROSS AND NET LENGTH OF PROJECT = 7,379 FT. = 1.40 MILES

F.A.P. RTE.	SECTION	COUNTY	TOTAL SHEETS	SHEET NO.
774	(107) LS	EFFINGHAM	8	2
FED. ROAD DIST. NO.		ILLINOIS	FED. AID PROJECT	

CONTRACT NO. 74127

## GENERAL NOTES

- THIS SECTION SHALL BE CONSTRUCTED IN ACCORDANCE WITH THE PLANS, THE "STANDARD SPECIFICATIONS FOR ROAD AND BRIDGE CONSTRUCTION", ADOPTED JANUARY 1, 2007, THE "SUPPLEMENTAL SPECIFICATIONS AND RECURRING SPECIAL PROVISIONS" INDICATED ON THE CHECK SHEET, AND "THE SPECIAL PROVISIONS" INCLUDED IN THE PROPOSAL.
- THE WORK INCLUDED IN THIS SECTION CONSISTS OF LANDSCAPING APPROXIMATELY 1.41 MILES OF F.A.P. ROUTE 774 (IL RTE 32/33).
- THE PROPOSED PROJECT BEGINS WEST OF THE WYE INTERSECTION OF IL ROUTE 32 AND IL ROUTE 33 AT STA. 541+93.85 AND EXTENDS IN AN EASTERLY DIRECTION A DISTANCE OF 1.40 MILES TO STA. 941+50.00 WEST OF NAZARENE ROAD. STATION EQUATION: STATION 559+19.18 = STATION 884+96.78.
- LOCATIONS OF UTILITIES HAVE NOT BEEN SHOWN ON THE PLANS. THE CONTRACTOR SHALL BE RESPONSIBLE FOR VERIFYING LOCATIONS OF UNDERGROUND UTILITIES WITH J.U.L.I.E. FIELD MARKINGS OF ACTIVITIES IN WORK AREAS MAY BE OBTAINED BY PROVIDING A MINIMUM OF 96 HOURS ADVANCE NOTICE THROUGH THE J.U.L.I.E. SYSTEM BY CALLING 800-892-0123.

AGENCIES WITH UTILITIES WITHIN THE PROJECT LIMITS:

ILLINOIS CONSOLIDATED TELEPHONE CO.	TELEPHONE
VERIZON NORTH INC.	TELEPHONE
AMEREN CIPS	GAS
NORRIS ELECTRIC COOPERATIVE	ELECTRICITY
AMEREN CIPS	ELECTRICITY
EJ WATER CORPORATION	WATER
LAKE SARA AREA WATER COOPERATIVE, INC.	WATER
CITY OF EFFINGHAM	WATER
CITY OF EFFINGHAM	SEWER
AT&T MEDIA SERVICE	T.V. CABLE

- ALL DISTURBED AREAS WITHIN THE RIGHT-OF-WAY SHALL BE RESHAPED AND RESEED. SEEDING SHALL BE CLASS 2 IN ACCORDANCE WITH SECTION 250 OF THE STANDARD SPECIFICATIONS. THE COST OF RESHAPING AND RESEEDING SHALL BE INCLUDED IN THE UNIT PRICE OF THE VARIOUS ITEMS OF WORK AND SHALL NOT BE PAID FOR SEPARATELY.
- ALL TREE AND SHRUB PLANTING SHALL CONFORM TO SECTION 253 OF THE STANDARD SPECIFICATIONS.
- ALL CIRCLED AREAS ARE BEDS AND SHALL BE FREE OF WEEDS PRIOR TO PLANTING. ALL BEDS ARE DESIGNATED WITH A CIRCLED ALPHABETICAL LETTER AND THE APPROXIMATE BED AREAS ARE GIVEN ON SHEET # 4.
- ALL SHRUB BEDS SHALL BE SPRAYED WITH GLYPHOSATE 10 DAYS PRIOR TO PLANTING.
- ALL BEDS AND TREES SHALL BE WOOD CHIPPED IN ACCORDANCE WITH SECTION 253 TO A MINIMUM DEPTH OF 3".
- AN APPLICATION OF RONSTAR GRANULAR PRE-EMERGENT HERBICIDE (OR EQUAL) SHALL BE APPLIED AS PER MANUFACTURER'S RECOMMENDATION PRIOR TO WOOD CHIPPING OF ALL BEDS AND TREES.
- ALL TREES, SHRUBS AND BED LOCATIONS SHALL BE AS APPROVED AND AS DIRECTED BY THE ROADSIDE MAINTENANCE TECHNICIAN, TOM WILSON 217-342-8270.
- THIS PROJECT SHALL BE COORDINATED WITH CONSTRUCTION OF THE ROADWAY PROJECT IN THE SAME AREA. THE CONTRACTOR SHALL NOT START THIS PROJECT WITHOUT THE APPROVAL OF THE DISTRICT 7 PROJECT IMPLEMENTATION ENGINEER.

## INDEX OF SHEETS

SHEET NO.	ITEM
1	COVER SHEET
2	GENERAL NOTES, INDEX & STANDARDS
3	SUMMARY OF QUANTITIES
4	SCHEDULE OF QUANTITIES
5	HORIZONTAL ALIGNMENT PLAN
6-8	LANDSCAPING PLANS

## HIGHWAY STANDARDS

THE FOLLOWING STANDARDS ARE A PART OF THESE PLANS AND ARE INCLUDED AFTER SHEET NUMBER: 9

STANDARD NO.	DESCRIPTION
701001-01	OFF ROAD OPERATIONS, 2L, 2W, MORE THAN 4.5 m (15') AWAY
701006-02	OFF ROAD OPERATIONS, 2L, 2W, 4.5 m (15') TO 600 mm (24") FROM PAVEMENT EDGE
701101-01	OFF ROAD OPERATIONS, MULTILANE, 4.5 m (15') TO 600 mm (24") FROM PAVEMENT EDGE
701106-01	OFF ROAD OPERATIONS, MULTILANE, MORE THAN 4.5 m (15') AWAY
702001-06	TRAFFIC CONTROL DEVICES
000001-04	ABBREVIATIONS, SYMBOLS & PATTERNS

REVISIONS		ILLINOIS DEPARTMENT OF TRANSPORTATION
NAME	DATE	
		GENERAL NOTES, INDEX OF SHEETS AND STANDARDS

DRAWN BY MLO  
CHECKED BY SJK

DATE 4/05

CONTRACT NO. 74127

80% FED./20% STATE

SUMMARY OF QUANTITIES				CONSTRUCTION TYPE CODE
				Y003
PAY CODE NUMBER	ITEM	UNIT	TOTAL QUANTITY	RURAL
67100100	MOBILIZATION	LSUM	1	1
67000500	ENGINEERS FIELD OFFICE, TYPE B	CAL MO	2	2
A2000274	TREE, ACER X FREEMANII MARMO (MARMO FREEMAN MAPLE), 10' HEIGHT, CLUMP FORM, BALLED AND BURLAPPED	EACH	17	17
A2000716	TREE, ACER PLANTANOIDES COLUMARE (COLUMNAR NORWAY MAPLE), 2" CALIPER, BALLED AND BURLAPPED	EACH	18	18
A2001216	TREE, ACER RUBRUM RED SUNSET (RED SUNSET RED MAPLE), 2" CALIPER, BALLED AND BURLAPPED	EACH	16	16
A2001716	TREE, ACER SACCHARUM (SUGAR MAPLE), 2" CALIPER, BALLED AND BURLAPPED	EACH	13	13
B2000964	TREE, AMELANCHIER LAEVIS (ALLEGHENY SERVICE BERRY), 5' HEIGHT, CLUMP FORM, BALLED AND BURLAPPED	EACH	36	36
B2001116	TREE, CERCIC CANADENSIS (EASTERN REDBUD), 2" CALIPER, TREE FORM, BALLED AND BURLAPPED	EACH	38	38
C2C01636	SHRUB, CORNUS SERICEA (REDSIER DOGWOOD), 3' HEIGHT, CONTAINER	EACH	81	81
C2C03036	SHRUB, FORSYTHIA NORTHERN SUN (NORHTERN SUN BORDER FORSYTHIA), 3' HEIGHT, CONTAINER	EACH	110	110
C2C11830	SHRUB, VIBURNUM DENTATUM MORTON (NORTHERN BURGUNDY ARROWWOOD VIBERNUM), 2-1/2" HEIGHT, CONTAINER	EACH	21	21
D2000536	EVERGREEN, JUNIPERUS CHINENSIS PFITZER ANA COMPACT (COMPACT PFITZER JUNIPER), 3' WIDTH, BALLED AND BURLAPPED	EACH	100	100
D2001772	EVERGREEN, PICEA ABIES (NORWAY SPRUCE), 6' HEIGHT, BALLED AND BURLAPPED	EACH	15	15
D2002272	EVERGREEN, PICEA PUNGENS GLAUCA (COLORADO BLUE SPRUCE), 6' HEIGHT, BALLED AND BURLAPPED	EACH	11	11
D2002972	EVERGREEN, PINUS STROBUS (EASTERN WHITE PINE), 6' HEIGHT, BALLED AND BURLAPPED	EACH	22	22

REVISIONS		ILLINOIS DEPARTMENT OF TRANSPORTATION
NAME	DATE	
		SUMMARY OF QUANTITIES

DATE 4/05

DRAWN BY MLO  
CHECKED BY SJK

CONTRACT NO. 74127

## LANDSCAPING SCHEDULE

KEY	NAME	UNIT	QUANTITY SHEET 1 OF 3 STA. 541+93.85 TO STA. 895+00.00	QUANTITY SHEET 2 OF 3 STA. 895+00.00 TO STA. 927+00.00	QUANTITY SHEET 3 OF 3 STA. 927+00.00 TO STA. 941+50.00	TOTAL QUANTITY
TCM	TREE, ACER PLANTANOIDES COLUMARE (COLUMNAR NORWAY MAPLE), 2" CALIPER, BALLED AND BURLAPPED	EACH	7	11		18
TFM	TREE, ACER X FREEMANII MARMO (MARMO FREEMAN MAPLE), 10' HEIGHT, CLUMP FORM, BALLED AND BURLAPPED	EACH	15	2		17
TRM	TREE, ACER RUBRUM RED SUNSET (RED SUNSET RED MAPLE), 2" CALIPER, BALLED AND BURLAPPED	EACH	16			16
TSM	TREE, ACER SACCHARUM (SUGAR MAPLE), 2" CALIPER, BALLED AND BURLAPPED	EACH	13			13
TSB	TREE, AMELANCHIER LAEVIS (ALLEGHENY SERVICEBERRY), 5' HEIGHT, CLUMP FORM, BALLED AND BURLAPPED	EACH	18	18		36
TER	TREE, CERCIC CANADENSIS (EASTER REDBUD), 2" CALIPER, TREE FORM, BALLED AND BURLAPPED	EACH	24	4	10	38
ENS	EVERGREEN, PICEA ABIES (NORWAY SPRUCE), 6' HEIGHT, BALLED AND BURLAPPED	EACH			15	15
EBS	EVERGREEN, PICEA PUNGENS GLAUCA (COLORADO BLUE SPRUCE), 6' HEIGHT, BALLED AND BURLAPPED	EACH	11			11
EWP	EVERGREEN, PINUS STROBUS (EASTERN WHITE PINE), 6' HEIGHT, BALLED AND BURLAPPED	EACH	22			22
SRD	SHRUB, CORNUS SERICEA (REDSIER DOGWOOD), 3' HEIGHT, CONTAINER	EACH	70		11	81
SNF	SHRUB, FORSYTHIA NORTHERN SUN (NORTHERN SUN BORDER FORSYTHIA), 3' HEIGHT, CONTAINER	EACH	110			110
SAV	SHRUB, VIBERNUM DENTATUM MORTON (NORTHERN BURGUNDY ARROWWOOD VIBERNUM), 2-1/2' HEIGHT, CONTAINER	EACH	10		11	21
SPJ	EVERGREEN, JUNIPERUS CHINENSIS PFITZER ANA COMPACT (COMPACT PFITZER JUNIPER), 3' WIDTH, BALLED AND BURLAPPED	EACH	80	20		100

APPROXIMATE BED AREAS - FOR INFORMATION ONLY

- |                |                |
|----------------|----------------|
| Ⓐ - 7,910 S.F. | Ⓒ - 1,480 S.F. |
| Ⓑ - 7,818 S.F. | Ⓓ - 6,070 S.F. |
| Ⓒ - 3,832 S.F. | Ⓔ - 1,526 S.F. |
| Ⓓ - 4,885 S.F. | Ⓕ - 1,698 S.F. |
| Ⓔ - 5,398 S.F. | Ⓖ - 1,211 S.F. |
| Ⓕ - 2,660 S.F. | Ⓖ - 2,243 S.F. |

REVISIONS		ILLINOIS DEPARTMENT OF TRANSPORTATION
NAME	DATE	
		SCHEDULE OF QUANTITIES

DRAWN BY MLO  
CHECKED BY SJK  
DATE 4/05

F.A.P. RTE.	SECTION	COUNTY	TOTAL SHEETS	SHEET NO.
774	(107) LS	EFFINGHAM	8	5
FED. ROAD DIST. NO.		ILLINOIS	FED. AID PROJECT	

CONTRACT NO. 74127

PROP. CURVE TR116A PI STA. = 66+50.52 Δ = 33° 30' 40" (LT) D = 23° 00' 01" R = 249.11' T = 75.00' L = 145.70' E = 11.05' e = N/C P.C. STA. = 65+75.52 P.T. STA. = 67+21.22	PROP. CURVE TR116B PI STA. = 68+94.08 Δ = 17° 57' 11" (RT) D = 23° 00' 01" R = 249.11' T = 39.35' L = 78.06' E = 3.09' e = N/C P.C. STA. = 68+54.73 P.T. STA. = 69+32.78
--	--

PROP. CURVE C1A  
PI STA. = 539+99.97  
Δ = 3° 53' 00" (LT)  
D = 0° 24' 00"  
R = 14,323.90'  
T = 485.59'  
L = 970.81'  
E = 8.23'  
e = 1.56%  
P.C. STA. = 535+14.38  
P.T. STA. = 544+85.19  
SE REMOVED STA. 544+00.00 TO STA. 547+00.00

PROP. CURVE C75  
PI STA. = 223+92.58  
Δ = 31° 32' 36" (RT)  
D = 19° 05' 55"  
R = 300.00'  
T = 84.73'  
L = 165.16'  
E = 11.74'  
e = N/C  
P.C. STA. = 223+07.85  
P.T. STA. = 224+73.01

PROP. CURVE C98  
PI STA. = 52+26.30  
Δ = 14° 59' 59" (RT)  
D = 9° 52' 43"  
R = 580.01'  
T = 76.36'  
L = 151.84'  
E = 5.00'  
e = 4.00%  
P.C. STA. = 51+49.94  
P.T. STA. = 53+01.78  
SE ATTAINED STA. 50+20.00 TO STA. 51+90.00  
SE REMOVED STA. 52+60.00 TO STA. 54+30.00

EXISTING CURVE C5  
P.I. STA. = 53+04.92  
Δ = 14° 49' 30" (RT)  
D = 4° 48' 35"  
R = 1191.22'  
T = 154.98'  
L = 308.22'  
E = 10.04'  
e = 1.56%  
P.C. STA. = 51+49.94  
P.T. STA. = 54+58.16

EXISTING CURVE C4  
P.I. STA. = 878+53.19  
Δ = 58° 33' 15" (LT)  
D = 5° 04' 46"  
R = 1127.99'  
T = 632.41'  
L = 1152.77'  
E = 165.18'  
e = 7%  
P.C. STA. = 872+20.78  
P.T. STA. = 883+73.55

PRC STA. 223+07.85 =  
STA. 544+65.39 (IL RTE 33) =  
STA. 223+07.85 (RELOCATED 1700TH AVE)

PROPOSED PROJECT BEGINS  
STA. 541+93.85

STATION EQUATION:  
STA. 225+23.01 BK =  
STA. 224+88.76 AH

STATION EQUATION:  
4' LT STA. 872+23.35  
= PC STA. 872+20.78

PC STA. 51+49.94  
STA. 52+00.09 (IL RTE 32) =  
STA. 230+03.13 (RELOCATED 1700TH ST)

PT STA. 53+01.78  
PT STA. 54+58.16  
E SURVEY

STA. 551+96.78 (IL RTE 33)  
STA. 56+10.35 (E SURVEY)  
STA. 551+74.79 (IL RTE 33) =  
STA. 56+03.00 (IL RTE 32)

STA. 896+43.01 (IL RTE 32/33) =  
STA. 65+00.00 (1000TH ST)  
PT STA. 63+58.24

PROP. CURVE C8  
PI STA. = 63+14.03  
Δ = 20° 33' 39" (RT)  
D = 23° 00' 01"  
R = 249.11'  
T = 45.18'  
L = 89.39'  
E = 4.06'  
e = N/C  
P.C. STA. = 62+68.85  
P.T. STA. = 63+58.24

PROP. CURVE C71  
PI STA. = 218+88.66  
Δ = 33° 10' 11" (RT)  
D = 19° 05' 55"  
R = 300.00'  
T = 89.35'  
L = 173.68'  
E = 13.02'  
e = N/C  
P.C. STA. = 217+99.31  
P.T. STA. = 219+72.98

PROP. CURVE C72  
PI STA. = 221+60.28  
Δ = 63° 57' 15" (LT)  
D = 19° 05' 55"  
R = 300.00'  
T = 187.29'  
L = 334.86'  
E = 53.67'  
e = N/C  
P.C. STA. = 219+72.98  
P.T. STA. = 223+07.85

PROPOSED CURVE C1  
P.I. STA. = 551+75.52  
Δ = 3° 52' 10" (RT)  
D = 0° 24' 01"  
R = 14317.15'  
T = 483.62'  
L = 966.87'  
E = 8.17'  
e = 1.56%  
P.C. STA. = 546+91.90  
P.T. STA. = 556+58.77  
SE ATTAINED STA. 547+00.00 TO STA. 549+50.00  
SE REMOVED STA. 549+50.00 TO STA. 550+00.00

MATCH LINE STA. 905+00.00

PROPOSED CURVE C2  
P.I. STA. = 909+09.01  
Δ = 9° 11' 48" (LT)  
D = 1° 57' 24"  
R = 2928.11'  
T = 235.51'  
L = 470.00'  
E = 9.46'  
e = 4.89%  
P.C. STA. = 906+73.50  
P.T. STA. = 911+43.50  
SE ATTAINED STA. 905+85.00 TO STA. 908+00.00  
SE REMOVED STA. 911+00.00 TO STA. 913+15.00

POT STA. 72+51.95  
STA. 913+90.65 (IL RTE 32/33) =  
STA. 70+00.00 (STONERIDGE DR)

PROPOSED PROJECT ENDS  
STA. 941+50.00

POT STA. 77+50.00  
STA. 940+77.10 (IL RTE 32/33) =  
STA. 75+00.00 (1075TH ST)

STA. 954+77.01 (IL RTE 32/33) =  
STA. 85+00.00 (NAZARENE RD)

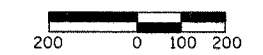
PROP. CURVE C16  
PI STA. = 83+78.61  
Δ = 24° 35' 40" (RT)  
D = 11° 07' 12"  
R = 515.26'  
T = 112.32'  
L = 221.18'  
E = 12.10'  
e = -----  
P.C. STA. = 82+66.29  
P.T. STA. = 84+87.47

PT STA. 84+87.47 =  
STA. 955+28.27 (IL RTE 32/33) =  
STA. 84+87.47 (RELOCATED NAZARENE RD)

STA. 958+10.00 (IL RTE 32/33) =  
STA. 240+00.00 (WEBB ST)

POT STA. 80+00.00  
POT STA. 79+50.00  
POT STA. 79+50.00

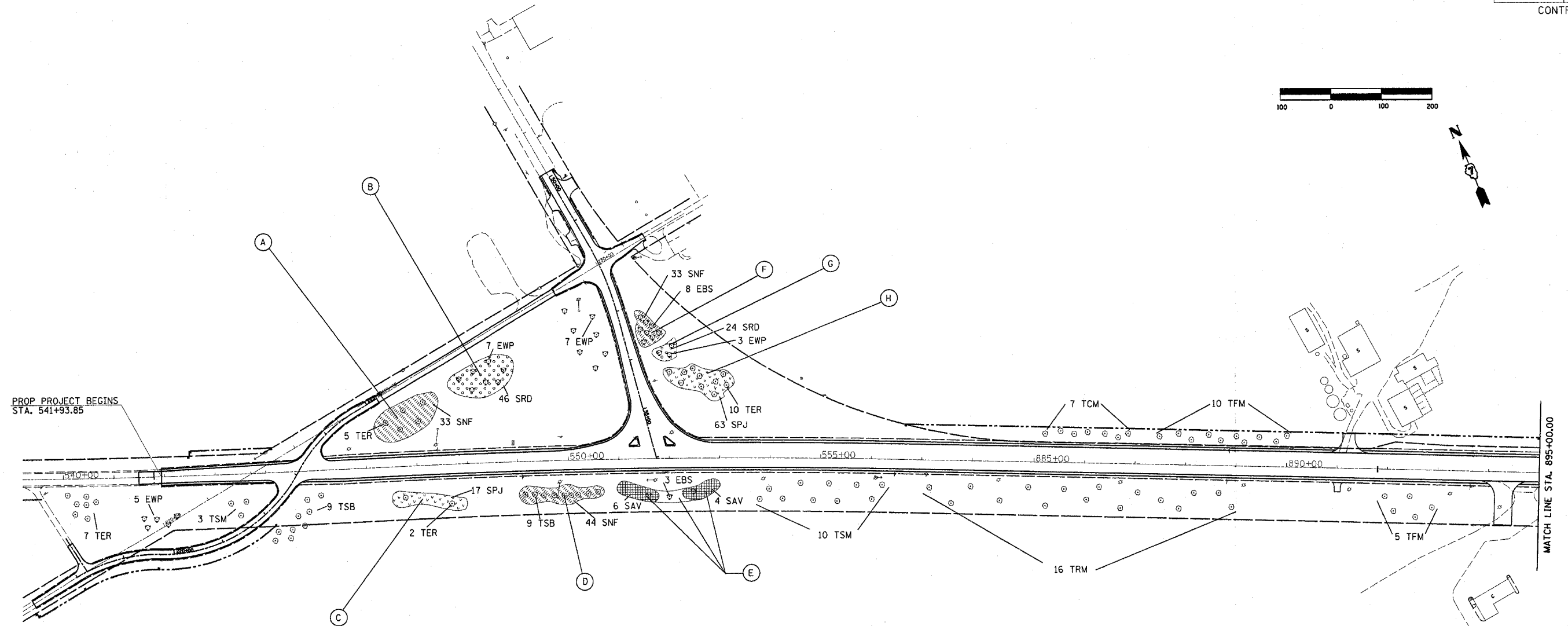
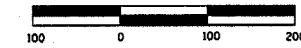
LEGEND  
⊕ DENOTES PERMANENT SURVEY MARKER PLACED DURING ROADWAY CONSTRUCTION.



REVISIONS	
NAME	DATE

ILLINOIS DEPARTMENT OF TRANSPORTATION  
HORIZONTAL ALIGNMENT PLAN  
SCALE: 1"=200'  
DATE 4/22/02  
DRAWN BY NJV  
CHECKED BY BKB

FAP NO.	SECTION	COUNTY	TOTAL SHEETS	SHEET NO.
774	(107) LS	EFFINGHAM	8	6
FED. ROAD DIST. NO.	ILLINOIS	FED. AID PROJECT NO.		
CONTRACT NO. 74127				



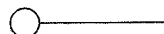
\$USER\$  
 \$DATE\$  
 •DGN-SPEC•

**LEGEND**

**TREES**

- TCM - 2" CAL - ACER PLATANOIDES COLUMARE - (COLUMNAR NORWAY MAPLE) A2000716
- TFM - 10' CLUMP - ACER X FREEMANII MARMO - (MARMO FREEMAN MAPLE) A2000274
- TRM - 2" CAL - ACER RUBRUM RED SUNSET - (RED SUNSET RED MAPLE) A2001216
- TSM - 2" CAL - ACER SACCHARUM - (SUGAR MAPLE) A2001716
- TSB - 5' CLUMP - AMELANCHIER LAEVIS - (ALLEGHENY SERVICEBERRY) B2000964
- TER - 2" CAL - CERCIC CANADENSIS - (EASTERN REDBUD) B2001116

DENOTES BED AREA (SEE SHEET # 4)



**EVERGREENS**

- ENS - 6' H - PICEA ABIES - (NORWAY SPRUCE) D2001772
- EBS - 6' H - PICEA PUNGENS GLAUCA - (COLORADO BLUE SPRUCE) D2002272
- EWP - 6' H - PINUS STROBUS - (EASTERN WHITE PINE) D2002972

**SHRUBS**

- SRD - 3' H - CORNUS SERICEA - (REDSIER DOGWOOD) C2C01636
- SNF - 3' H - FORSYTHIA NORTHERN SUN - (NORTHERN SUN BORDERFORSYTHIA) C2C03036
- SAV - 2.5' H - VIBERNUM DENTATUM MORTON - (NORTHERN BURGUNDY ARROWWOOD VIBERNUM) C2C11830
- SPJ - 3' W - JUNIPERUS CHINENSIS PFITZER ANA COMPACT - (COMPACT PFITZER JUNIPER) D2000536

REVISIONS	
NAME	DATE

ILLINOIS DEPARTMENT OF TRANSPORTATION

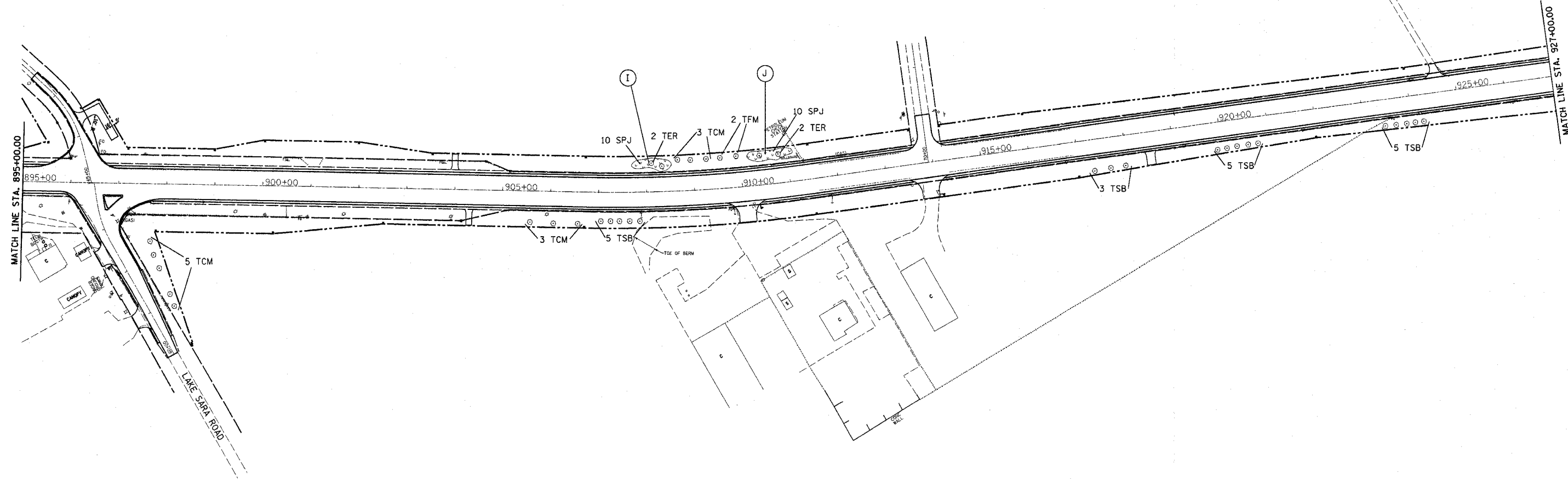
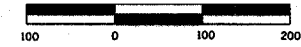
**LANDSCAPING PLAN  
SHEET 1 OF 3**

SCALE: 1" = 100'  
DATE

DRAWN BY DIST 7  
CHECKED BY DIST 7

\$USER\$  
 \$DATE\$  
 \$DGN-SPEC\$

FAP NO.	SECTION	COUNTY	TOTAL SHEETS	SHEET NO.
774	(107) LS	EFFINGHAM	8	7
FED. ROAD DIST. NO.		ILLINOIS	FED. AID PROJECT NO.	
CONTRACT NO. 74127				

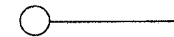


**LEGEND**

**TREES**

- TCM - 2" CAL - ACER PLATANOIDES COLUMARE - (COLUMNAR NORWAY MAPLE) A2000716
- TFM - 10' CLUMP - ACER X FREEMANII MARMO - (MARMO FREEMAN MAPLE) A2000274
- TRM - 2" CAL - ACER RUBRUM RED SUNSET - (RED SUNSET RED MAPLE) A2001216
- TSM - 2" CAL - ACER SACCHARUM - (SUGAR MAPLE) A2001716
- TSB - 5' CLUMP - AMELANCHIER LAEVIS - (ALLEGHENY SERVICEBERRY) B2000964
- TER - 2" CAL - CERCIC CANADENSIS - (EASTERN REDBUD) B2001116

DENOTES BED AREA (SEE SHEET # 4)



**EVERGREENS**

- ENS - 6' H - PICEA ABIES - (NORWAY SPRUCE) D2001772
- EBS - 6' H - PICEA PUNGENS GLAUCA - (COLORADO BLUE SPRUCE) D2002272
- EWP - 6' H - PINUS STROBUS - (EASTERN WHITE PINE) D2002972

**SHRUBS**

- SRD - 3' H - CORNUS SERICEA - (REDOSIER DOGWOOD) C2C01636
- SNF - 3' H - FORSYTHIA NORTHERN SUN - (NORTHERN SUN BORDERFORSYTHIA) C2C03036
- SAV - 2.5' H - VIBERNUM DENTATUM MORTON - (NORTHERN BURGUNDY ARROWWOOD VIBERNUM) C2C11830
- SPJ - 3' W - JUNIPERUS CHINENSIS PFITZER ANA COMPACT - (COMPACT PFITZER JUNIPER) D2000536

REVISIONS	
NAME	DATE

ILLINOIS DEPARTMENT OF TRANSPORTATION

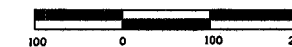
**LANDSCAPING PLAN  
 SHEET 2 OF 3**

SCALE: 1" = 100'  
 DATE

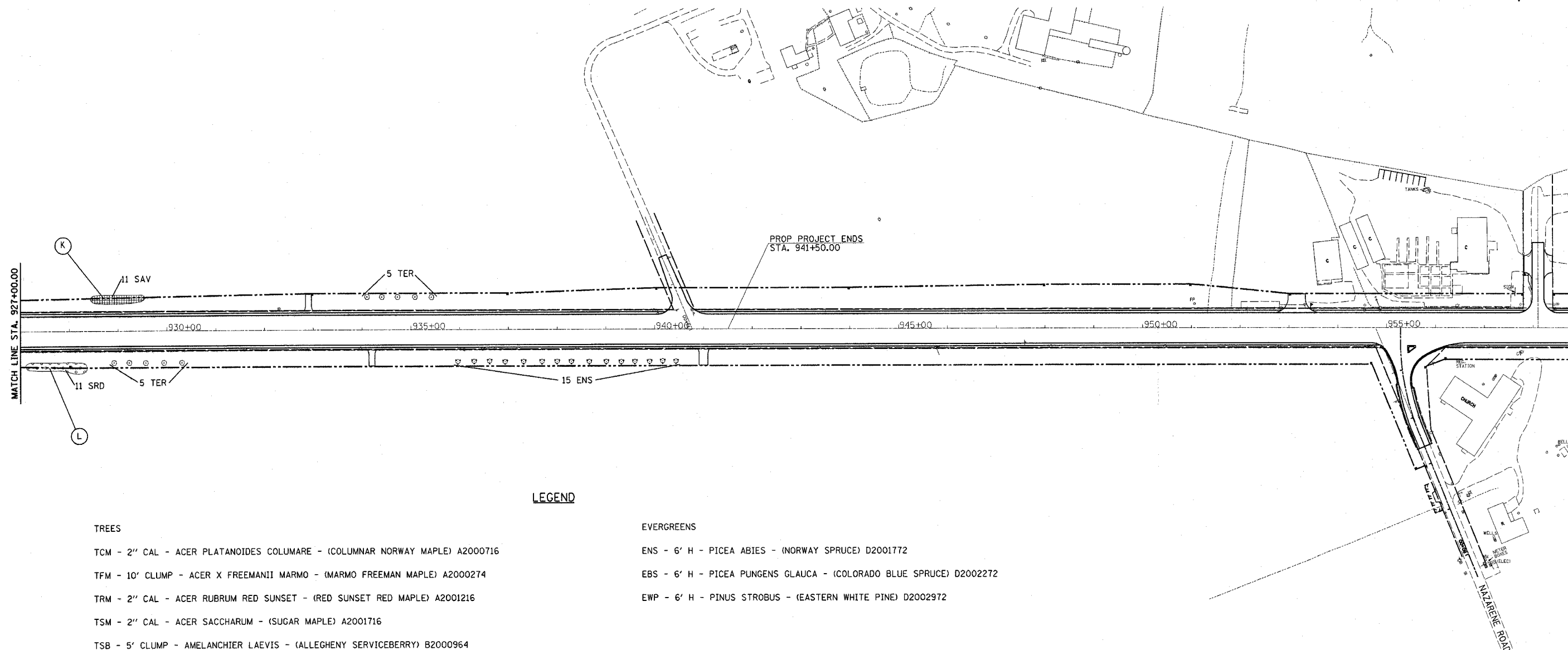
DRAWN BY DIST 7  
 CHECKED BY DIST 7

FAP ETL	SECTION	COUNTY	TOTAL SHEETS	SHEET NO.
774	(107) LS	EFFINGHAM	8	8
FED. ROAD DIST. NO.		ILLINOIS	FED. AID PROJECT NO.	

CONTRACT NO. 74127



\$USERS  
\$DATES  
•DGN-SPEC•



**LEGEND**

**TREES**

- TCM - 2" CAL - ACER PLATANOIDES COLUMARE - (COLUMNAR NORWAY MAPLE) A2000716
- TFM - 10' CLUMP - ACER X FREEMANII MARMO - (MARMO FREEMAN MAPLE) A2000274
- TRM - 2" CAL - ACER RUBRUM RED SUNSET - (RED SUNSET RED MAPLE) A2001216
- TSM - 2" CAL - ACER SACCHARUM - (SUGAR MAPLE) A2001716
- TSB - 5' CLUMP - AMELANCHIER LAEVIS - (ALLEGHENY SERVICEBERRY) B2000964
- TER - 2" CAL - CERCIC CANADENSIS - (EASTERN REDBUD) B2001116

**EVERGREENS**

- ENS - 6' H - PICEA ABIES - (NORWAY SPRUCE) D2001772
- EBS - 6' H - PICEA PUNGENS GLAUCA - (COLORADO BLUE SPRUCE) D2002272
- EWP - 6' H - PINUS STROBUS - (EASTERN WHITE PINE) D2002972

**SHRUBS**

- SRD - 3' H - CORNUS SERICEA - (REDSIER DOGWOOD) C2C01636
- SNF - 3' H - FORSYTHIA NORTHERN SUN - (NORTHERN SUN BORDERFORSYTHIA) C2C03036
- SAV - 2.5' H - VIBERNUM DENTATUM MORTON - (NORTHERN BURGUNDY ARROWWOOD VIBERNUM) C2C11830
- SPJ - 3' W - JUNIPERUS CHINENSIS PFITZER ANA COMPACT - (COMPACT PFITZER JUNIPER) D2000536

DENOTES BED AREA (SEE SHEET # 4)



REVISIONS	
NAME	DATE

ILLINOIS DEPARTMENT OF TRANSPORTATION

LANDSCAPING PLAN  
SHEET 3 OF 3

SCALE: 1" = 100'  
DATE

DRAWN BY DIST 7  
CHECKED BY DIST 7