

NORTHFIELD

CHISELED CROSS IN SW END CONC CULVERT HOWL NW COR OF INTERSECTION

25+63.26+45 LEE ROAD

3 IN 17 1/2" DIA. ALUMINUM PAINTED PIPE CORNER OF INTERSECTION

100 100 200 41  
100 200 400 100

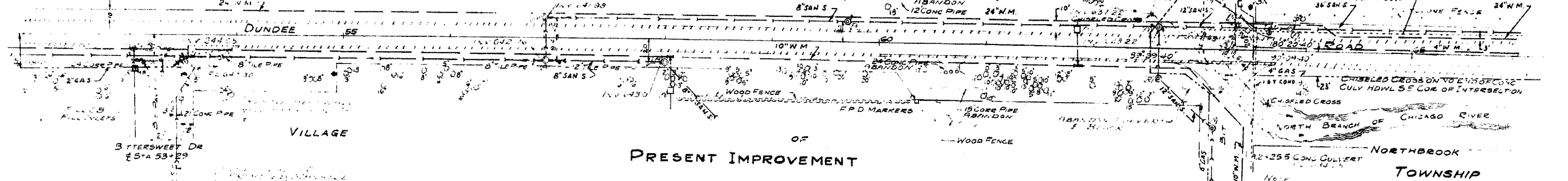
VILLAGE

PEOPLE PATH

OF

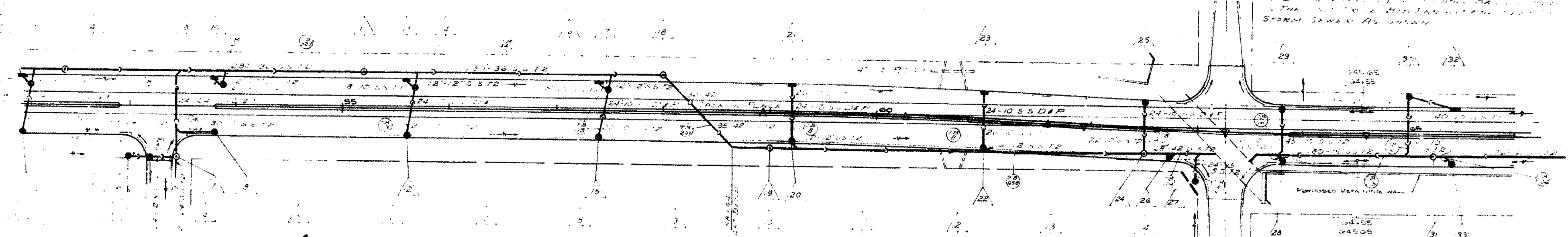
NORTHBROOK

GOLF COURSE  
14" x 10" DUCT  
36" S&S



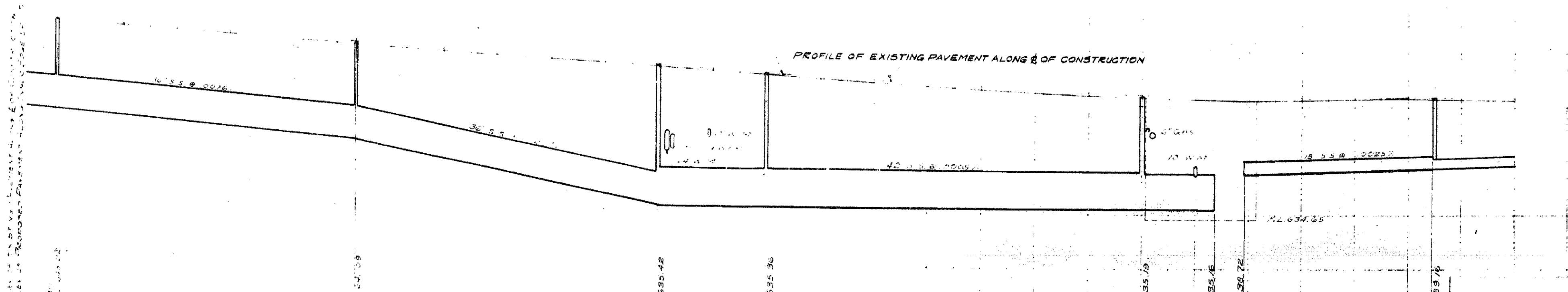
PRESENT IMPROVEMENT

NOTE:  
 THE 15" CONC CULVERT IS TO BE INSTALLED IN THE SW CORNER OF THE INTERSECTION OF LEE ROAD AND DUNDEE ROAD. THE 15" CONC CULVERT IS TO BE INSTALLED IN THE SW CORNER OF THE INTERSECTION OF LEE ROAD AND DUNDEE ROAD. THE 15" CONC CULVERT IS TO BE INSTALLED IN THE SW CORNER OF THE INTERSECTION OF LEE ROAD AND DUNDEE ROAD.



13	14	15	16	17	18	19	20	21	22	23	24	25	26	27	28	29	30	31	32	33	
STA 52+38 EL 647.70	STA 52+40 EL 647.70	STA 52+42 EL 647.70	STA 52+44 EL 647.70	STA 52+46 EL 647.70	STA 52+48 EL 647.70	STA 52+50 EL 647.70	STA 52+52 EL 647.70	STA 52+54 EL 647.70	STA 52+56 EL 647.70	STA 52+58 EL 647.70	STA 52+60 EL 647.70	STA 52+62 EL 647.70	STA 52+64 EL 647.70	STA 52+66 EL 647.70	STA 52+68 EL 647.70	STA 52+70 EL 647.70	STA 52+72 EL 647.70	STA 52+74 EL 647.70	STA 52+76 EL 647.70	STA 52+78 EL 647.70	STA 52+80 EL 647.70

PROFILE OF EXISTING PAVEMENT ALONG & OF CONSTRUCTION



53	54	55	56	57	58	59	60	61	62	63	64	65
649.20 649.10	650.52 650.46	649.87 650.07	649.30 649.47	649.76 649.92	649.14 649.31	649.55 649.67	649.93 649.06	649.37 649.57	649.93 649.70	649.65 649.85	649.71 649.82	649.71 649.82

APPROVED BY: RICHARD H. GOLDBERMAN  
**DUNDEE ROAD  
 DRAINAGE & UTILITIES**  
 T.H. F.R. H.D.R.  
 July 27, 67  
 Jack C. Stow