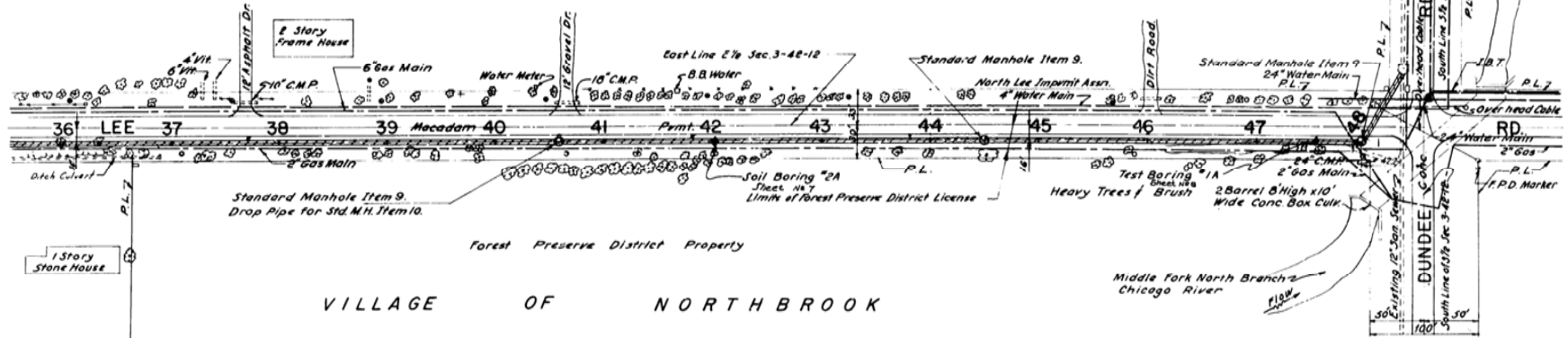


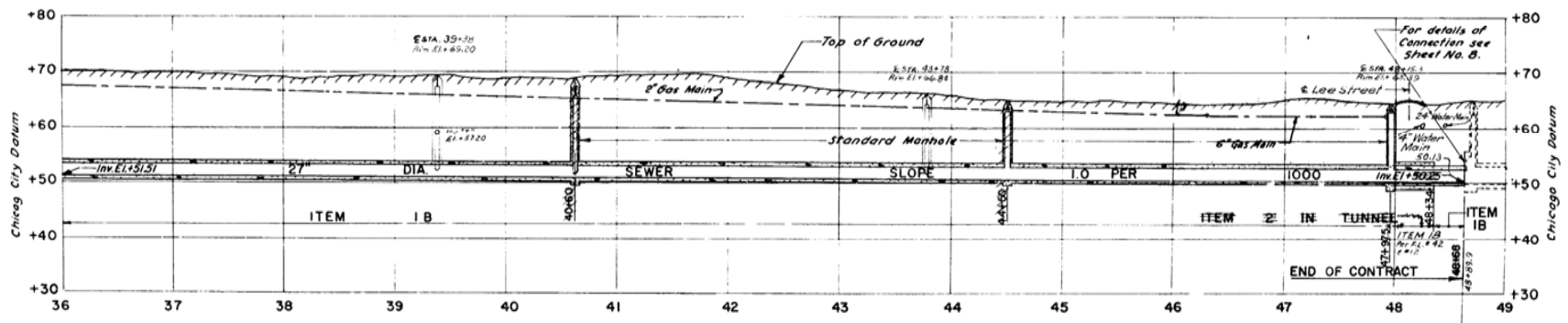
Green Acres Country Club.



VILLAGE OF NORTHBROOK

PLAN  
STA. 36+00 TO STA 48+60

Note:  
Construction work along Lee Road shall conform to all conditions of the Forest Preserve District License with respect to Working Area, Fencing, Restoration and Re-seeding. See Appendix A of the specifications. Lee Road must be kept open to traffic at all times.



PROFILE  
STA. 36+00 TO STA. 48+60

Plan: 1"=50'-0"  
Profile (Hors): 1"=50'-0"  
Profile (Vert): 1"=10'-0"

PROFESSIONAL ENGINEER DESIGN  
APPROVED  
C.E. 111955  
AS WORKING PLANS  
ENGINEERING DEPT.  
WATER SECTION

EXISTING HARMS RD  
CONTRACT NO. 2

REVISION OF PLAN		
DATE	DESCRIPTION	BY
11/29/66	Straighten Sewer Line From Sta. 4100 to Sta. 4400	M.V.
	Relocate 24" Dia. Pipe Sta. 4400 to Sta. 4450, Added M.H. at Sta. 47+97.5. Located 24" 6" Water Main at Int. Station	

Corrected: *[Signature]*  
Eng. of Sewer Design  
Approved: *[Signature]*  
Assistant Chief Engineer  
Approved As To Operations: *[Signature]*  
Chief of M. & O.  
Approved: *[Signature]*  
Chief Engineer

THE METROPOLITAN SANITARY DISTRICT  
OF GREATER CHICAGO  
HOWARD STREET SEWER SYSTEM  
HARMS ROAD INTERCEPTING SEWER EXTENSION  
CONTRACT NO. 4  
66 002 2  
PLAN AND PROFILE

SCALES SHOWN ARE JULY 1960  
SCALES OF TRACINGS SHEET NO. 5

DRAWN BY: T. Cigrang  
TRACED BY: P. B. Benell  
CHECKED BY: D. Grummitt  
EXAMINED BY: H. P. Walsh  
Assistant Engr. - Sewer Design

Note "A" on sheet No. 6 applies to this sheet  
For conventional signs see sheet No. 8.

1238/3277