

CODE NO.	ITEM	UNIT	TOTAL QUANTITY	CONSTRUCTION CODE						
				80% FED 20% STATE	80% FED 20% STATE	100% LOCAL	80% FED 10% STATE 10% LOCAL	80% FED 20% LOCAL	100% LOCAL	
				ROADWAY 0004	LANDSCAPING 0031	LIGHTING 0021	PARKING 0021	SIDEWALK 0021	WATERMAIN 0043	
20100110	TREE REMOVAL (6 TO 15 UNITS DIAMETER)	UNIT	40		40					
20100210	TREE REMOVAL (OVER 15 UNITS DIAMETER)	UNIT	43		43					
20100500	TREE REMOVAL, ACRES	ACRE	0.1		0.1					
20101000	TEMPORARY FENCE	FOOT	600	600						
20101300	TREE PRUNING (1 TO 10 INCH DIAMETER)	EACH	31	31						
20101350	TREE PRUNING (OVER 10 INCH DIAMETER)	EACH	18	18						
20101400	NITROGEN FERTILIZER NUTRIENT	POUND	120	120						
20101500	PHOSPHORUS FERTILIZER NUTRIENT	POUND	120	120						
20101600	POTASSIUM FERTILIZER NUTRIENT	POUND	120	120						
20101700	SUPPLEMENTAL WATERING	UNIT	215	215						
20200100	EARTH EXCAVATION	CU YD	6536	6536						
20201200	REMOVAL AND DISPOSAL OF UNSUITABLE MATERIAL	CU YD	889	889						
20800150	TRENCH BACKFILL	CU YD	3754	1826						1928
21001000	GEOTECHNICAL FABRIC FOR GROUND STABILIZATION	SQ YD	3638	2925			713			
21101615	TOPSOIL FURNISH AND PLACE, 4"	SQ YD	7900	7900						
25000210	SEEDING, CLASS 2A	ACRE	0.2	0.2						
25003210	INTERSEEDING, CLASS 2A	ACRE	0.1	0.1						
25100115	MULCH, METHOD 2	ACRE	1.6	1.6						
25100630	EROSION CONTROL BLANKET	SQ YD	2100	2100						
	* Specialty Item									

PA1501-5338_V07_CumberlandPrairieCA000_ShrubstoD162816-shr-003-500.dgn

* * *

19



USER NAME = Kerdrabant	DESIGNED - KJD	REVISED -
PLOT SCALE = 20,0000 ' / in.	DRAWN - KJD	REVISED -
PLOT DATE = 10/20/2017	CHECKED - JMG	REVISED -
	DATE - 10/17/2017	REVISED -

**STATE OF ILLINOIS
DEPARTMENT OF TRANSPORTATION**

SUMMARY OF QUANTITIES			
SCALE:	SHEET 01	OF 12 SHEETS	STA. TO STA.

F.A.P. RTE. 339	SECTION 583-R	COUNTY COOK	TOTAL SHEETS 186	SHEET NO. 03
CONTRACT NO. 62B16				
ILLINOIS FED. AID PROJECT				

⊙*

CODE NO.	ITEM	UNIT	TOTAL QUANTITY	CONSTRUCTION CODE					
				80% FED 20% STATE	80% FED 20% STATE	100% LOCAL	80% FED 10% STATE 10% LOCAL	80% FED 20% LOCAL	100% LOCAL
				ROADWAY 0004	LANDSCAPING 0031	LIGHTING 0021	PARKING 0021	SIDEWALK 0021	WATERMAIN 0043
25200110	SODDING, SALT TOLERANT	SO YD	6240	5616	624				
28000400	PERIMETER EROSION BARRIER	FOOT	4477	4477					
28000500	INLET AND PIPE PROTECTION	EACH	19	19					
28000510	INLET FILTERS	EACH	18	18					
30300001	AGGREGATE SUBGRADE IMPROVEMENT	CU YD	505	429.2			75.8		
30300112	AGGREGATE SUBGRADE IMPROVEMENT 12"	SO YD	14749	14036			713		
31101260	SUBBASE GRANULAR MATERIAL, TYPE B 4"	SO YD	1235	1235					
42000301	PORTLAND CEMENT CONCRETE PAVEMENT 8" (JOINTED)	SO YD	4055	3459			596		
42000306	PORTLAND CEMENT CONCRETE PAVEMENT 8 1/4" (JOINTED)	SO YD	1442	1442					
42000416	PORTLAND CEMENT CONCRETE PAVEMENT 9 3/4" (JOINTED)	SO YD	6201	6201					
42001300	PROTECTIVE COAT	SO YD	4296	4296					
42300200	PORTLAND CEMENT CONCRETE DRIVEWAY PAVEMENT, 6 INCH	SO YD	264	264					
42300400	PORTLAND CEMENT CONCRETE DRIVEWAY PAVEMENT, 8 INCH	SO YD	344	344					
42400200	PORTLAND CEMENT CONCRETE SIDEWALK 5 INCH	SO FT	16255					16255	⚠
42400300	PORTLAND CEMENT CONCRETE SIDEWALK 6 INCH	SO FT	485					485	
42400800	DETECTABLE WARNINGS	SO FT	586					586	⚠
44000100	PAVEMENT REMOVAL	SO YD	13477	12881			596		
44000200	DRIVEWAY PAVEMENT REMOVAL	SO YD	307	307					
44000500	COMBINATION CURB AND GUTTER REMOVAL	FOOT	6779	6110			669		
44000600	SIDEWALK REMOVAL	SO FT	14013					14013	⚠

* Specialty Items

PA1581-638-107 C:\msh\lens\cadd\cadd\sharea\01621616-1st-804-500.dwg



USER NAME = Kandrabent	DESIGNED - KJD	REVISED -
PLOT SCALE = 20.0000' / 1" =	DRAWN - KJD	REVISED -
PLOT DATE = 10/20/2017	CHECKED - JMG	REVISED -
	DATE - 10/17/2017	REVISED -

**STATE OF ILLINOIS
DEPARTMENT OF TRANSPORTATION**

SUMMARY OF QUANTITIES			
SCALE:	SHEET 02 OF 12 SHEETS	STA.	TO STA.

F.A.P. RTE. 339	SECTION 583-R	COUNTY COOK	TOTAL SHEETS 186	SHEET NO. 04
CONTRACT NO. 62B16				
ILLINOIS FED. AID PROJECT				

CODE NO.	ITEM	UNIT	TOTAL QUANTITY	CONSTRUCTION CODE					
				80% FED 20% STATE ROADWAY 0004	80% FED 20% STATE LANDSCAPING 0031	100% LOCAL LIGHTING 0021	80% FED 10% STATE 10% LOCAL PARKING 0021	80% FED 20% LOCAL SIDEWALK 0021	100% LOCAL WATERMAIN 0043
				60500060	REMOVING INLETS	EACH	1	1	
60500070	REMOVING MANHOLES TO MAINTAIN FLOW	EACH	1	1					
60600605	CONCRETE CURB, TYPE B	FOOT	319	319					
60601805	CONCRETE CURB TRANSITION	FOOT	150	150					
60603100	CONCRETE GUTTER TRANSITION	FOOT	150	150					
60603800	COMBINATION CONCRETE CURB AND GUTTER, TYPE B-6.12	FOOT	4300	3631			669		
60605900	COMBINATION CONCRETE CURB AND GUTTER, TYPE B-9.12	FOOT	284	284					
60608521	COMBINATION CONCRETE CURB AND GUTTER, TYPE M-2.24	FOOT	159	159					
60608582	COMBINATION CONCRETE CURB AND GUTTER, TYPE M-4.24	FOOT	2665	2665					
60610400	COMBINATION CONCRETE CURB AND GUTTER, TYPE M-6.24	FOOT	411	411					
60611811	COMBINATION CONCRETE CURB AND GUTTER, TYPE M (MODIFIED)	FOOT	355	355					
60620000	CONCRETE MEDIAN, TYPE SB-6.24	SO FT	169	169					
60622320	CONCRETE MEDIAN, TYPE SM-4.24	SO FT	122	122					
64300430	IMPACT ATTENUATORS (NON-REDIRECTIVE), TEST LEVEL 2	EACH	1	1					
* 66900200	NON-SPECIAL WASTE DISPOSAL	CU YD	2810	2810					
* 66900450	SPECIAL WASTE PLANS AND REPORTS	LSUM	1	1					
* 66900530	SOIL DISPOSAL ANALYSIS	EACH	7	7					
67000400	ENGINEER'S FIELD OFFICE, TYPE A	CAL MO	24	24					
67100100	MOBILIZATION	LSUM	1	1					

19

A
*
*
*



USER NAME = Kanndrabent	DESIGNED - KJD	REVISED -
DRAWN - KJD	CHECKED - JMG	REVISIED -
PLOT SCALE = 20.0000' / 1" =	DATE - 10/17/2017	REVISIED -
PLOT DATE = 10/20/2017		

STATE OF ILLINOIS
DEPARTMENT OF TRANSPORTATION

SUMMARY OF QUANTITIES			
SCALE:	SHEET 05	OF 12 SHEETS	STA. TO STA.

F.A.P. RTE. 339	SECTION 583-R	COUNTY COOK	TOTAL SHEETS 186	SHEET NO. 07
CONTRACT NO. 62B16				
ILLINOIS FED. AID PROJECT				

CODE NO.	ITEM	UNIT	TOTAL QUANTITY	CONSTRUCTION CODE						
				80% FED 20% STATE ROADWAY	80% FED 20% STATE LANDSCAPING	100% LOCAL LIGHTING	80% FED 10% STATE 10% LOCAL PARKING	80% FED 20% LOCAL SIDEWALK	100% LOCAL WATERMAIN	
				0004	0031	0021	0021	0021	0043	
70103815	TRAFFIC CONTROL SURVEILLANCE	CAL DA	200	200						
70300900	PAVEMENT MARKING TAPE, TYPE IV - LETTERS AND SYMBOLS	SQ FT	2327	2327						
70300904	PAVEMENT MARKING TAPE, TYPE IV 4"	FOOT	38105	38105						
70300906	PAVEMENT MARKING TAPE, TYPE IV 6"	FOOT	533	533						
70300908	PAVEMENT MARKING TAPE, TYPE IV 8"	FOOT	1186	1186						
70300912	PAVEMENT MARKING TAPE, TYPE IV 12"	FOOT	3086	3086						
70400100	TEMPORARY CONCRETE BARRIER	FOOT	1102	1102						
70400200	RELOCATE TEMPORARY CONCRETE BARRIER	FOOT	1794	1794						
70600235	IMPACT ATTENUATORS, TEMPORARY (FULLY REDIRECTIVE), TEST LEVEL 2	EACH	2	2						
70600240	IMPACT ATTENUATORS, TEMPORARY (NON- REDIRECTIVE), TEST LEVEL 2	EACH	2	2						
70600340	IMPACT ATTENUATORS, RELOCATE (NON- REDIRECTIVE), TEST LEVEL 2	EACH	3	3						
* 72000100	SIGN PANEL - TYPE 1	SQ FT	280	280						
* 72000200	SIGN PANEL - TYPE 2	SQ FT	10	10						
* 72000300	SIGN PANEL - TYPE 3	SQ FT	243	243						
72400310	REMOVE SIGN PANEL - TYPE 1	SQ FT	163	163						
72800100	TELESCOPING STEEL SIGN SUPPORT	FOOT	222	222						
* 73302160	OVERHEAD SIGN STRUCTURE - CANTILEVER, TYPE II-C-A (30" X 5' -6")	FOOT	30	30						
* 73302210	OVERHEAD SIGN STRUCTURE - CANTILEVER, TYPE III-C-A (36" X 7' -0")	FOOT	37	37						
* 73400200	DRILLED SHAFT CONCRETE FOUNDATIONS	CU YD	22	22						

19A
 P:\1561-539-107-1\Drawings\Structure\1561539-107-108-500.dwg
 User: Kandrabant

* Specialty Item



USER NAME = Kandrabant	DESIGNED - KJD	REVISED -
	DRAWN - KJD	REVISED -
PLOT SCALE = 20.0000' / in.	CHECKED - JMG	REVISED -
PLOT DATE = 10/28/2017	DATE - 10/17/2017	REVISED -

STATE OF ILLINOIS
DEPARTMENT OF TRANSPORTATION

SUMMARY OF QUANTITIES			
SCALE:	SHEET 06	OF 12 SHEETS	STA. TO STA.

F.A.P. RTE. 339	SECTION 583-R	COUNTY COOK	TOTAL SHEETS 186	SHEET NO. 08
CONTRACT NO. 62B16				
ILLINOIS FED. AID PROJECT				

CODE NO.	ITEM	UNIT	TOTAL QUANTITY	CONSTRUCTION CODE						
				80% FED 20% STATE ROADWAY	80% FED 20% STATE LANDSCAPING	100% LOCAL LIGHTING	80% FED 10% STATE 10% LOCAL PARKING	80% FED 20% LOCAL SIDEWALK	100% LOCAL WATERMAIN	
				0004	0031	0021	0021	0021	0043	
73700100	REMOVE GROUND MOUNTED SIGN SUPPORT	EACH	26	26						
* 78005110	EPOXY PAVEMENT MARKING - LINE 4"	FOOT	2618	2618						
* 78005140	EPOXY PAVEMENT MARKING - LINE 8"	FOOT	715	715						
* 78005150	EPOXY PAVEMENT MARKING - LINE 12"	FOOT	2820	2820						
* 78005180	EPOXY PAVEMENT MARKING - LINE 24"	FOOT	272	272						
* 78008200	POLYUREA PAVEMENT MARKING TYPE I - LETTERS AND SYMBOLS	SO FT	605	605						
78008210	POLYUREA PAVEMENT MARKING TYPE I - LINE 4"	FOOT	4468	3512			956			
78008230	POLYUREA PAVEMENT MARKING TYPE I - LINE 6"	FOOT	409	409						
78008240	POLYUREA PAVEMENT MARKING TYPE I - LINE 8"	FOOT	458	458						
78008250	POLYUREA PAVEMENT MARKING TYPE I - LINE 12"	FOOT	1259	1259						
78008270	POLYUREA PAVEMENT MARKING TYPE I - LINE 24"	FOOT	76	76						
* 78100100	RAISED REFLECTIVE PAVEMENT MARKER	EACH	49	49						
78100300	REPLACEMENT REFLECTOR	EACH	50	50						
* 78200011	BARRIER WALL REFLECTORS, TYPE C	EACH	89	89						
78300200	RAISED REFLECTIVE PAVEMENT MARKER REMOVAL	EACH	77	77						
* 80400100	ELECTRIC SERVICE INSTALLATION	EACH	2			2				
80400200	ELECTRIC UTILITY SERVICE CONNECTION	LSUM	1			1				
* 81028170	UNDERGROUND CONDUIT, GALVANIZED STEEL, 1" DIA.	FOOT	480			480				
* 81028220	UNDERGROUND CONDUIT, GALVANIZED STEEL, 3" DIA.	FOOT	524			524				

P:\1501-530-107_Cumberland\Structure\AC000_Sheets\0162B16-111-009-500.dgn
 1501-530-107



USER NAME = Ken.drabant	DESIGNED - KJD	REVISED -
DRAWN - KJD	CHECKED - JMG	REVISED -
PLOT SCALE = 20.0000' / in.	DATE - 10/17/2017	REVISED -
PLOT DATE = 10/28/2017		

STATE OF ILLINOIS
DEPARTMENT OF TRANSPORTATION

SUMMARY OF QUANTITIES			
SCALE:	SHEET 07	OF 12 SHEETS	STA. TO STA.

F.A.P. RTE. 339	SECTION 583-R	COUNTY COOK	TOTAL SHEETS 186	SHEET NO. 09
CONTRACT NO. 62B16				
ILLINOIS FED. AID PROJECT				

CODE NO.	ITEM	UNIT	TOTAL QUANTITY	CONSTRUCTION CODE					
				80% FED 20% STATE	80% FED 20% STATE	100% LOCAL	80% FED 10% STATE 10% LOCAL	80% FED 20% LOCAL	100% LOCAL
				ROADWAY 0004	LANDSCAPING 0031	LIGHTING 0021	PARKING 0021	SIDEWALK 0021	WATERMAIN 0043
* 81300320	JUNCTION BOX, STAINLESS STEEL, ATTACHED TO STRUCTURE, 8" X 8" X 6"	EACH	2			2			
* 81603090	UNIT DUCT, 600V, 3-1C NO.4, 1/C NO.6 GROUND, (XLP-TYPE USE), 1 1/4" DIA. POLYETHYLENE	FOOT	2206			2206			
* 81702170	ELECTRIC CABLE IN CONDUIT, 600V (XLP-TYPE USE) 1/C NO. 2/0	FOOT	195			195			
* 81702450	ELECTRIC CABLE IN CONDUIT, 600V (XLP-TYPE USE) 3-1/C NO. 10	FOOT	277			277			
* 82500360	LIGHTING CONTROLLER, BASE MOUNTED, 480VOLT, 100AMP	EACH	1			1			
* 83006200	LIGHT POLE, ALUMINUM, 30 FT. M.H., 6 FT. MAST ARM	EACH	18			18			
* 83600352	LIGHT POLE FOUNDATION, METAL, 11 1/2" BOLT CIRCLE, 8 5/8" X 6'	EACH	18			18			
* 83800105	BREAKAWAY DEVICE, TRANSFORMER BASE, 11.5 INCH BOLT CIRCLE	EACH	18			18			
84200500	REMOVAL OF LIGHTING UNIT, SALVAGE	EACH	4			4			
84200804	REMOVAL OF POLE FOUNDATION	EACH	4			4			
* A2002282	TREE, ALNUS X SPAETHII (SPAETHS ALDER), 2-1/2" CALIPER, BALLED AND BURLAPPED	EACH	3		3				
* A2002916	TREE, CELTIS OCCIDENTALIS (COMMON HACKBERRY), 2" CALIPER, BALLED AND BURLAPPED	EACH	3		3				
* A2004416	TREE, GINKGO BILOBA (GINKGO), 2" CALIPER, BALLED AND BURLAPPED	EACH	2		2				
* A2004617	TREE, GLEDITSIA TRIACANTHOS VAR. INERMIS DRAVES (STREET KEEPER HONEYLOCUST), 2-1/2" CALIPER, BALLED AND BURLAPPED	EACH	1		1				
* A2008722	TREE, ULMUS PATRIOT (PATRIOT ELM), 2" CALIPER, BALLED AND BURLAPPED	EACH	2		2				
* A2064012	TREE, QUERCUS ALBA X ROBUR CRIMSCHMIDT (CRIMSON SPIRE OAK), 2-1/2" CALIPER, BALLED AND BURLAPPED	EACH	2		2				
* C2C06024	SHRUB, RHUS TYPHINA (STAGHORN SUMAC), 2' HEIGHT, CONTAINER	EACH	90		90				
X0322881	TREE TRIMMING	EACH	20	20					
X0327980	PAVEMENT MARKING REMOVAL - WATER BLASTING	SQ FT	8537	8537					

19

P:\1561-638_M07_CumberlandCircle.ctb, Sheets\1162816-int-010-500.dwg



USER NAME = Ken.drobent	DESIGNED - KJD	REVISED -
PLOT SCALE = 20.0000' / in.	DRAWN - KJD	REVISED -
PLOT DATE = 10/28/2017	CHECKED - JMG	REVISED -
	DATE - 10/17/2017	REVISED -

**STATE OF ILLINOIS
DEPARTMENT OF TRANSPORTATION**

SUMMARY OF QUANTITIES			
SCALE:	SHEET 08	OF 12 SHEETS	STA. TO STA.

F.A.P. RTE. 339	SECTION 583-R	COUNTY COOK	TOTAL SHEETS 186	SHEET NO. 10
CONTRACT NO. 62B16				
ILLINOIS FED. AID PROJECT				

A
*

CODE NO.	ITEM	UNIT	TOTAL QUANTITY	CONSTRUCTION CODE						
				80% FED 20% STATE	80% FED 20% STATE	100% LOCAL	80% FED 10% STATE 10% LOCAL	80% FED 20% LOCAL	100% LOCAL	
				ROADWAY 0004	LANDSCAPING 0031	LIGHTING 0021	PARKING 0021	SIDEWALK 0021	WATERMAIN 0043	
X1400203	LUMINAIRE, LED, HORIZONTAL MOUNT, TYPE B	EACH	18			18				
X1700001	DRILL EXISTING MANHOLE, HEAVY DUTY HANDHOLE, OR MEDIAN WALL JUNCTION BOX	EACH	1	1						
X2010310	TREE REMOVAL (SPECIAL)	UNIT	20		20					
X4021000	TEMPORARY ACCESS (PRIVATE ENTRANCE)	EACH	6	6						
X4022000	TEMPORARY ACCESS (COMMERCIAL ENTRANCE)	EACH	9	9						
X4400110	TEMPORARY PAVEMENT REMOVAL	SQ YD	612	612						
X4421790	CLASS D PATCHES, TYPE II, 12 INCH (SPECIAL)	SQ YD	12	12						
X4401198	HOT-MIX ASPHALT SURFACE REMOVAL, VARIABLE DEPTH	SQ YD	160	160						
X550A562	TEMPORARY STORM SEWERS, CLASS A, TYPE 2 12"	FOOT	39	39						
X5537600	STORM SEWERS TO BE CLEANED 8"	FOOT	316	316						
X5537700	STORM SEWERS TO BE CLEANED 10"	FOOT	215	215						
X5537800	STORM SEWERS TO BE CLEANED 12"	FOOT	435	435						
X5537900	STORM SEWERS TO BE CLEANED 15"	FOOT	175	175						
X5538000	STORM SEWERS TO BE CLEANED 18"	FOOT	94	94						
X5538200	STORM SEWERS TO BE CLEANED 24"	FOOT	390	390						
X5538600	STORM SEWERS TO BE CLEANED 36"	FOOT	230	230						
X5538800	STORM SEWERS TO BE CLEANED 48"	FOOT	120	120						
X6022712	CATCH BASINS, TYPE A, 4' -DIAMETER, WITH SPECIAL FRAME AND GRATE	EACH	3	3						
X6024502	INLETS, TYPE B, WITH SPECIAL FRAME AND GRATE	EACH	3	3						
X6050700	REMOVE INLET BOX	EACH	5	5						
X6061815	COMBINATION CONCRETE CURB AND GUTTER, TYPE M (SPECIAL)	FOOT	373	373						

19

P:\1501-638-107-Cumberland\Projects\62B16-11-011-500.dwg
 User: KJDRobert
 Date: 10/17/2017



USER NAME = KJDRobert	DESIGNED - KJD	REVISED -
PLOT SCALE = 20.0000' / in.	DRAWN - KJD	REVISED -
PLOT DATE = 10/28/2017	CHECKED - JMG	REVISED -
	DATE 10/17/2017	REVISED -

**STATE OF ILLINOIS
DEPARTMENT OF TRANSPORTATION**

SUMMARY OF QUANTITIES

SCALE: SHEET 09 OF 12 SHEETS STA. TO STA.

F.A.P. RTE. 339	SECTION 583-R	COUNTY COOK	TOTAL SHEETS 186	SHEET NO. 11
CONTRACT NO. 62B16				
[ILLINOIS] FED. AID PROJECT				

CODE NO.	ITEM	UNIT	TOTAL QUANTITY	CONSTRUCTION CODE						
				80% FED 20% STATE	80% FED 20% STATE	100% LOCAL	80% FED 10% STATE 10% LOCAL	80% FED 20% LOCAL	100% LOCAL	
				ROADWAY 0004	LANDSCAPING 0031	LIGHTING 0021	PARKING 0021	SIDEWALK 0021	WATERMAIN 0043	
X7010216	TRAFFIC CONTROL AND PROTECTION, (SPECIAL)	LSUM	1	1						
X7015005	CHANGEABLE MESSAGE SIGN	CAL DA	3225	3225						
X7030005	TEMPORARY PAVEMENT MARKING REMOVAL	SQ FT	14215	14215						
X7040125	PINNING TEMPORARY CONCRETE BARRIER	EACH	687	687						
Z0013798	CONSTRUCTION LAYOUT	LSUM	1	1						
Z0018500	DRAINAGE STRUCTURES TO BE CLEANED	EACH	11	11						
Z0018700	DRAINAGE STRUCTURE TO BE REMOVED	EACH	11	11						
Z0033020	LUMINAIRE SAFETY CABLE ASSEMBLY	EACH	18			18				
Z0049799	PROTECTING OR RESETTING SURVEY MARKERS	EACH	1	1						
Z0056608	STORM SEWER (WATER MAIN REQUIREMENTS) 12 INCH	FOOT	102	102						
Z0056610	STORM SEWER (WATER MAIN REQUIREMENTS) 15 INCH	FOOT	197	197						
Z0056612	STORM SEWER (WATER MAIN REQUIREMENTS) 18 INCH	FOOT	49	49						
Z0056616	STORM SEWER (WATER MAIN REQUIREMENTS) 24 INCH	FOOT	257	257						
Z0062456	TEMPORARY PAVEMENT	SQ YD	1235	1235						
Z0062458	TEMPORARY PAVEMENT (VARIABLE DEPTH)	TON	197.1	197.1						
Z0076600	TRAINEES	HOURL	2500	2500						
X2700003	GROOVING FOR RECESSED PAVEMENT MARKING 8"	FOOT	780	780						
Z0076604	TRAINEES - TRAINING PROGRAM GRADUATE	HOURL	2500	2500						
X0320100	GROOVING FOR RECESSED PAVEMENT MARKING 10"	FOOT	291	291						
X2700004	PREFORMED PLASTIC PAVEMENT MARKING, TYPE B - LINE 7"	FOOT	780	780						
X0320100	PREFORMED PLASTIC PAVEMENT MARKING, TYPE B - LINE 9"	FOOT	291	291						
X1200161	DUCTILE IRON PIPE WATER MAIN, CLASS 52, 10 INCH (DESPLAINES)	FOOT	1947							1947
X1200162	DUCTILE IRON PIPE WATER MAIN, CLASS 52, 6 INCH (DESPLAINES)	FOOT	150							150

P:\1501-628-407_CumberlandCrucial\CA00_Sheets\11282816-shit-812-500.dgn
 19
 17



USER NAME = Ken.drabent	DESIGNED - KJD	REVISIONS -
PLOT SCALE = 20.0000' / in.	DRAWN - KJD	REVISIONS -
PLOT DATE = 10/20/2017	CHECKED - JMG	REVISIONS -
	DATE - 10/17/2017	REVISIONS -

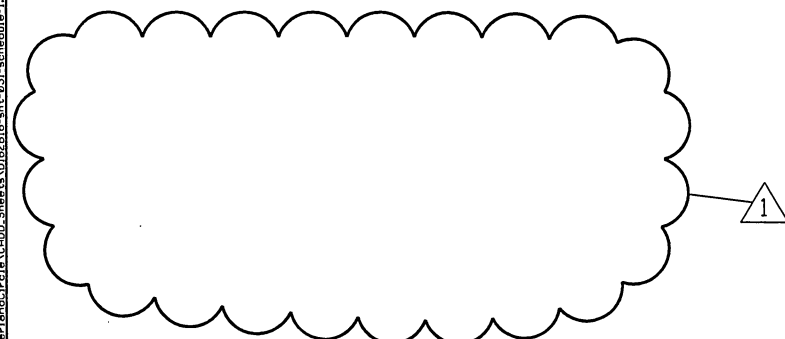
STATE OF ILLINOIS
DEPARTMENT OF TRANSPORTATION

SUMMARY OF QUANTITIES			
SCALE:	SHEET 10	OF 12 SHEETS	STA. TO STA.

F.A.P. RTE. 339	SECTION 583-R	COUNTY COOK	TOTAL SHEETS 186	SHEET NO. 12
CONTRACT NO. 62B16				
ILLINOIS FED. AID PROJECT				

EARTHWORK SCHEDULE					
LOCATION	EARTH EXCAVATION	EARTHWORK EXCAVATION ADJUSTED FOR SHRINKAGE (1)	EMBANKMENT	EARTHWORK BALANCEWASTE (+) OR SHORTAGE (-)	REMOVAL AND DISPOSAL OF UNSUITABLE MATERIAL
STATION	CUBIC YARD	CUBIC YARD	CUBIC YARD	CUBIC YARD	CUBIC YARD
WOLF ROAD					
STA. 50+52.7 TO STA. 51+00	109.35	92.95	131.34	-38.39	0
STA. 51+00 TO STA. 51+41.64	130.78	111.16	47.24	63.92	0
STA. 51+41.64 TO STA. 52+00	285.81	242.94	5.49	237.45	0
STA. 52+00 TO STA. 52+50	237.14	201.57	0.00	201.57	0
STA. 52+50 TO STA. 53+00	158.77	134.95	0.00	134.95	0
STA. 53+00 TO STA. 53+50	117.23	99.65	0.00	99.65	0
STA. 53+50 TO STA. 54+00	97.24	82.65	2.56	80.09	0
TOTAL	1137.00	966.00	187.00	780	0
GOLF ROAD - EAST LEG					
STA. 65+00 TO STA. 65+50	153.72	130.66	73.45	57.21	0
STA. 65+50 TO STA. 66+21.43	83.94	71.35	77.45	-6.10	0
STA. 66+21.43 TO STA. 66+50	36.95	31.41	25.34	6.07	0
STA. 66+50 TO STA. 67+00	88.27	75.03	14.4	60.63	0
STA. 67+00 TO STA. 67+50	103.48	87.96	0.00	87.96	0
STA. 67+50 TO STA. 68+00	98.91	84.07	0.00	84.07	0
STA. 68+00 TO STA. 68+50	86.82	73.8	12.38	61.42	0
STA. 68+50 TO STA. 69+00	85.23	72.45	12.38	60.07	0
TOTAL	738	627	216	412	0
BROADWAY STREET					
STA. 51+27.05 TO STA. 51+50	47.75	40.59	11.69	28.90	0
STA. 51+50 TO STA. 52+00	117.62	99.98	9.12	90.86	0
STA. 52+00 TO STA. 52+50	120.41	102.35	2.94	99.41	0
STA. 52+50 TO STA. 53+00	138.10	117.39	2.39	115.00	0
STA. 53+00 TO STA. 53+50	151.37	128.66	0.00	128.66	0
STA. 53+50 TO STA. 54+00	104.63	88.94	0.00	88.94	0
STA. 54+00 TO STA. 54+50	56.65	48.15	0.09	48.06	213.12
STA. 54+50 TO STA. 55+00	53.99	45.89	0.09	45.80	211.03
STA. 55+00 TO STA. 55+50	27.66	23.51	1.38	22.13	245.08
STA. 55+50 TO STA. 56+00	19.68	16.73	1.50	15.23	219.54
TOTAL	838	713	30	683	889
GOLF RD - SOUTHWEST LEG					
STA. 59+00 TO STA. 59+50	197.81	168.14	24.33	143.81	0
STA. 59+50 TO STA. 60+00	347.43	295.32	63.99	231.33	0
STA. 60+00 TO STA. 60+50	307.20	261.12	64.33	196.79	0
STA. 60+50 TO STA. 61+00	251.21	213.53	43.07	170.46	0
STA. 61+00 TO STA. 61+50	214.01	181.91	40.06	141.85	0
STA. 61+50 TO STA. 62+00	182.86	155.43	29.82	125.61	0
STA. 62+00 TO STA. 62+50	180.42	153.36	29.72	123.64	0
STA. 62+50 TO STA. 63+00	188.48	160.21	39.67	120.54	0
STA. 63+00 TO STA. 63+50	158.38	134.62	45.06	89.56	0
TOTAL	2028	1724	380.05	1344	0
STATE STREET					
STA. 60+50 TO STA. 61+00	89.95	76.46	0.32	76.14	0
STA. 61+00 TO STA. 61+50	117.77	100.10	0.25	99.85	0
STA. 61+50 TO STA. 62+00	150.39	127.83	0.44	127.39	0
STA. 62+00 TO STA. 62+50	188.72	160.41	0.27	160.14	0
STA. 62+50 TO STA. 63+00	207.07	176.01	0.60	175.41	0
STA. 63+00 TO STA. 63+50	185.91	158.02	11.46	146.56	0
STA. 63+50 TO STA. 64+00	191.85	163.07	36.81	126.26	0
STA. 64+00 TO STA. 64+50	199.18	169.3	100.96	68.34	0
STA. 64+50 TO STA. 65+00	463.91	394.32	150.11	244.21	0
TOTAL	1795	1526	302	1225	0
TOTAL	6536	5556	1116	+4444	889

(1) 15% SHRINKAGE FACTOR



P:\1501-6218-007_CumberlandCircle\ACADD_Sheets\1501-6218-007-03-schedule-1.dwg



USER NAME = ahmed.jssa	DESIGNED - MAA	REVISED - 12/01/2017
PLOT SCALE = 2.0000' / 1"	DRAWN - MAA	REVISED - 01/04/2018 RTB
PLOT DATE = 1/4/2018	CHECKED - JMG	REVISED -
	DATE - 10/17/2017	REVISED -

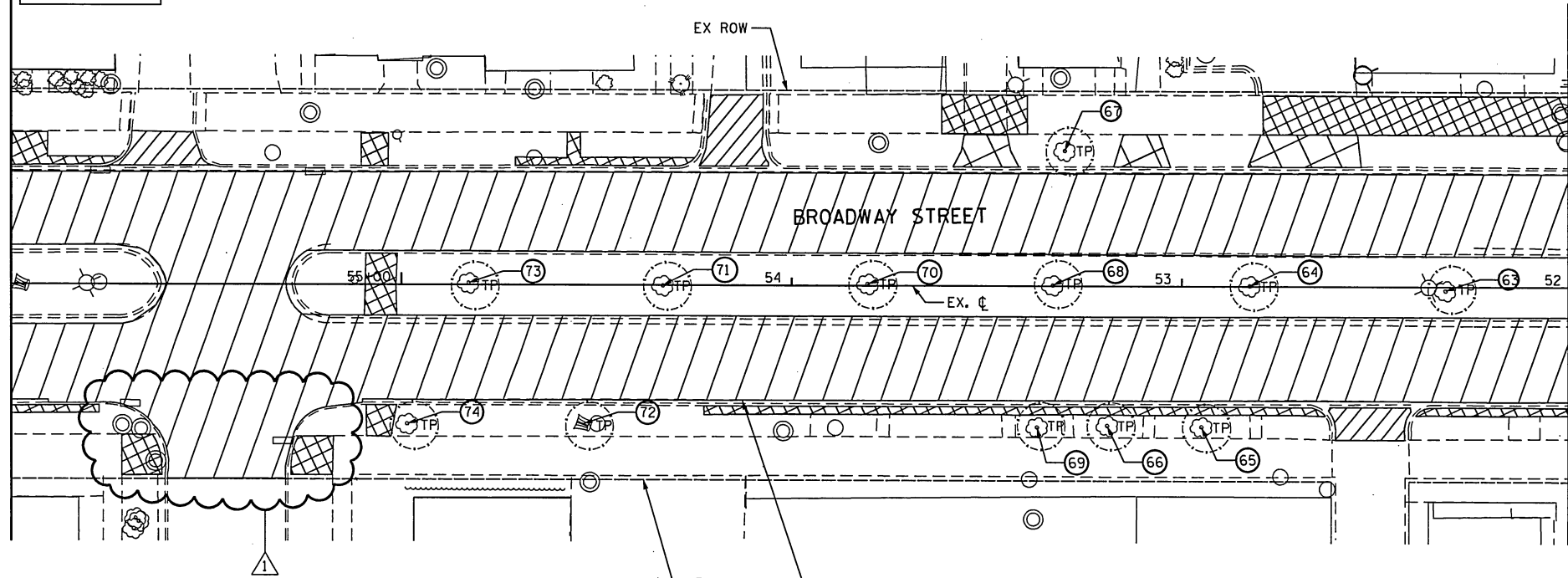
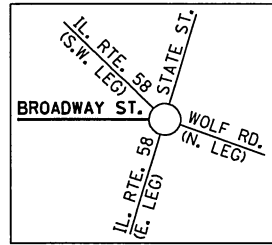
STATE OF ILLINOIS
DEPARTMENT OF TRANSPORTATION

SCHEDULE OF QUANTITIES	
SCALE:	SHEET 01 OF 03 SHEETS STA. TO STA.

F.A.P. RTE.	SECTION	COUNTY	TOTAL SHEETS	SHEET NO.
339	583-R	COOK	186	23
CONTRACT NO. 62B16				
ILLINOIS FED. AID PROJECT				

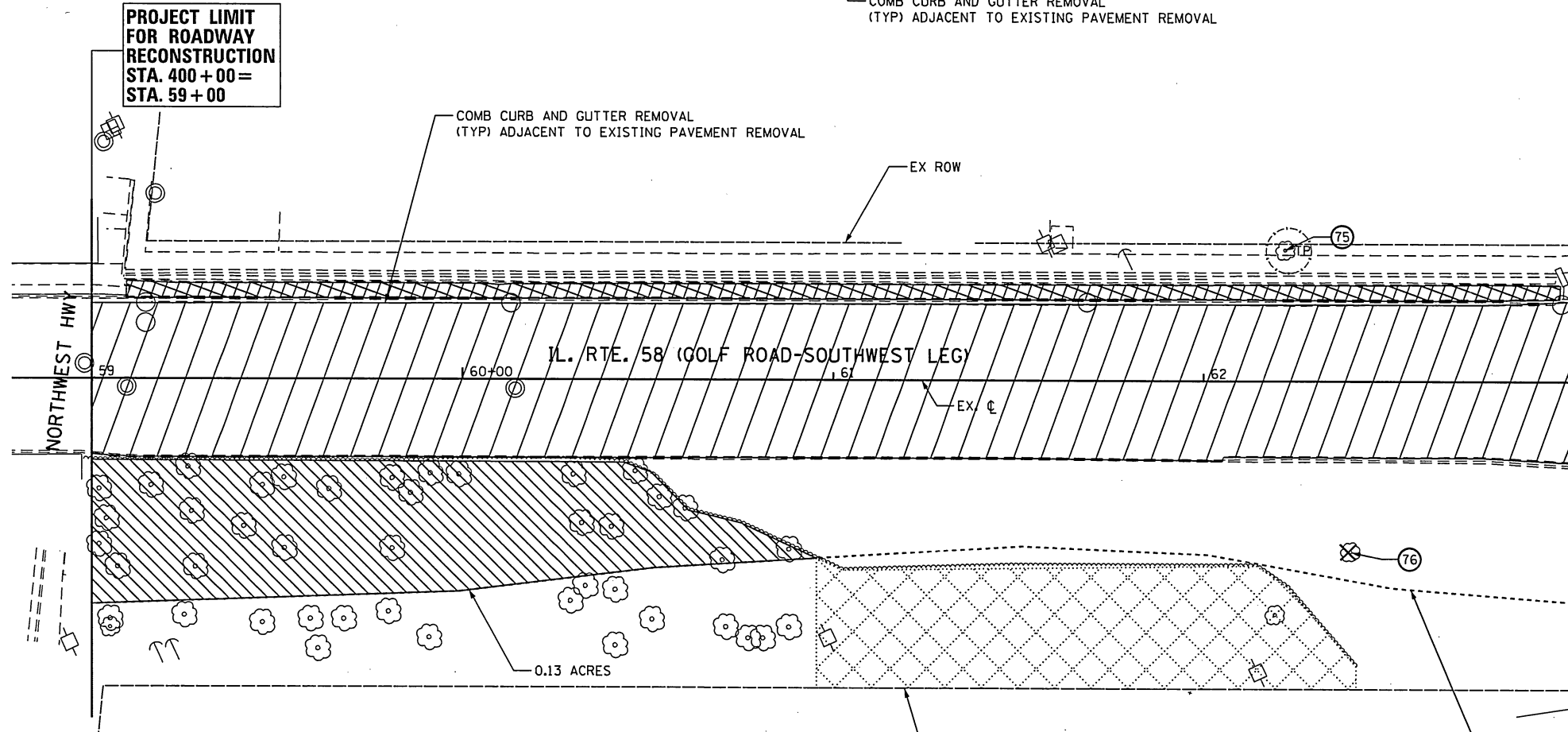
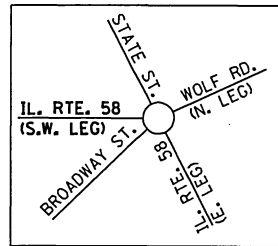
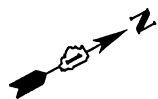
REV 1-8-18

PROJECT LIMIT
STA. 300+00=
STA. 56+00



MATCH LINE STA 52+00
SEE SHEET 31

PROJECT LIMIT
FOR ROADWAY
RECONSTRUCTION
STA. 400+00=
STA. 59+00



MATCH LINE STA 63+00
SEE SHEET 31

NOTE
FOR ADDITIONAL TREE REMOVAL
AND PROPOSED OVERHEAD SIGN
SOUTH OF RR BRIDGE
SEE SHEET 40

- LEGEND**
- TREE REMOVAL (SPECIAL)
 - PAVEMENT REMOVAL
 - DRIVEWAY REMOVAL
 - SIDEWALK REMOVAL
 - TREE REMOVAL, ACRES
 - TREES
 - TREES
 - TEMP. FENCE TO PROTECT TREE
 - TP - TREE PRUNING
 - TREE DESIGNATION'S (SEE SCHEDULE OF QUANTITY TREE REMOVAL AND PROTECTION TABLE)

P:\1501-6300_407_CumberlandGolfCln\000_Sheets\015818\18-01-053-rem Broadway\GOLF_Sw.dgn



USER NAME = ohmad.issa	DESIGNED - EA	REVISED - 12/01/2017
PLOT SCALE = 40,0000' / in.	DRAWN - EA	REVISED - 01/04/2018 RTB
PLOT DATE = 1/4/2018	CHECKED - DA	REVISED -
	DATE - 10/17/2017	REVISED -

STATE OF ILLINOIS
DEPARTMENT OF TRANSPORTATION

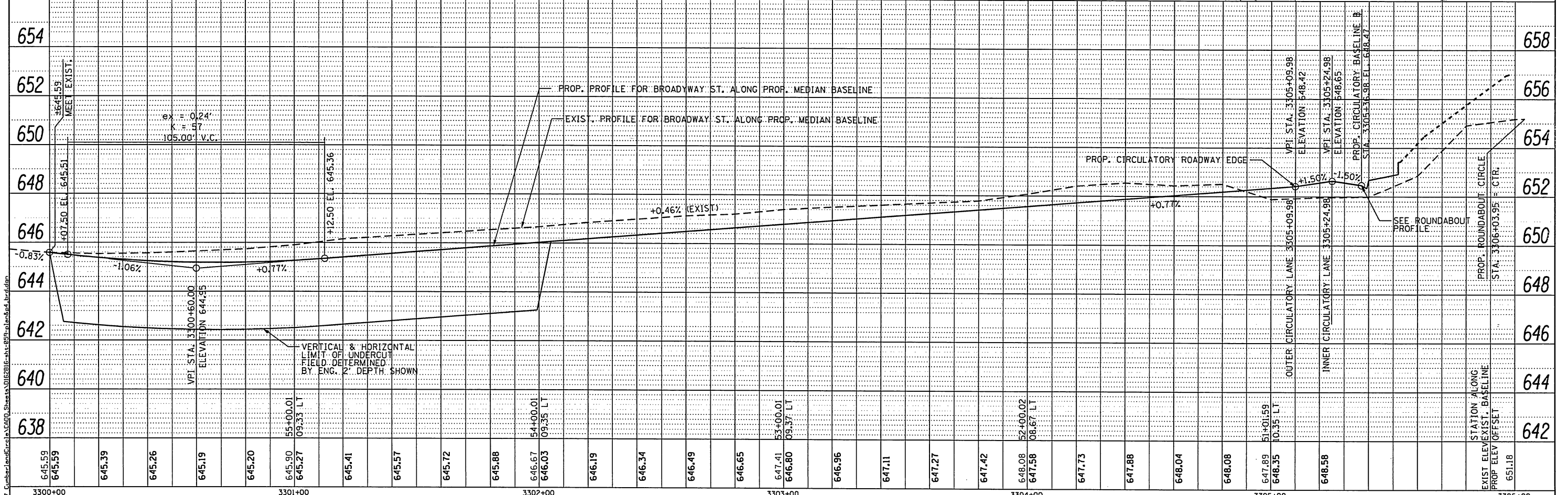
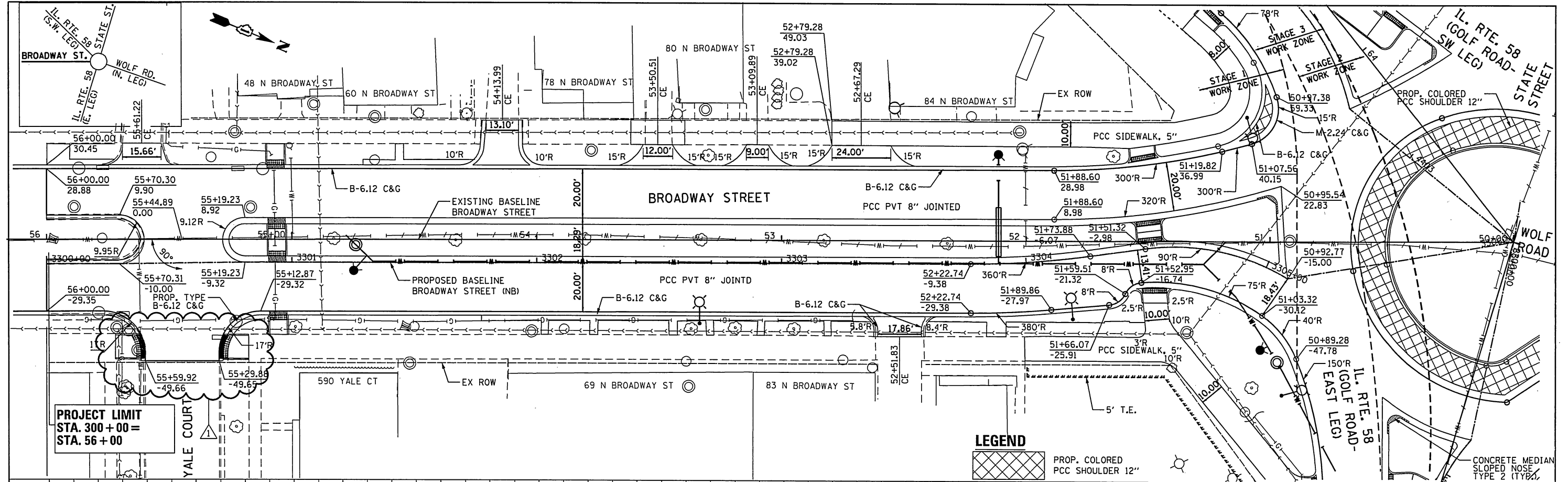
ROADWAY REMOVAL PLAN
BROADWAY ST. & GOLF RD. (SOUTHWEST)
SCALE: SHEET 03 OF 04 SHEETS STA. TO STA.

F.A.P. RTE.	SECTION	COUNTY	TOTAL SHEETS	SHEET NO.
339	583-R	COOK	186	33
CONTRACT NO. 62B16				
ILLINOIS FED. AID PROJECT				

REV 1-8-18

DATE	
BY	
PLAN	
SURVEYED	
ALIGNED	
CHECKED	
NO. OF SHEETS	
NO. OF SHEETS CHECKED	
NO. OF SHEETS NOT CHECKED	

DATE	
BY	
PROFILE	
SURVEYED	
GRADES CHECKED	
NO. OF SHEETS	
NO. OF SHEETS CHECKED	
NO. OF SHEETS NOT CHECKED	



645.59	645.59	645.39	645.26	645.19	645.20	645.90	645.27	645.41	645.57	645.72	645.88	646.67	646.03	646.19	646.34	646.49	646.65	647.41	646.80	646.96	647.11	647.27	647.42	648.08	647.58	647.73	647.88	648.04	648.08	647.89	648.35	648.58	648.18
3300+00					3301+00						3302+00								3303+00					3304+00							3305+00		3306+00



USER NAME = ohmad.issa	DESIGNED - JMG	REVISED - 12/01/2017
PLOT SCALE = 48,0000' / 1"	DRAWN - EA	REVISED - 01/04/2018 RTB
PLOT DATE = 1/4/2018	CHECKED - RB	REVISED -
	DATE - 10/17/2017	REVISED -

STATE OF ILLINOIS
DEPARTMENT OF TRANSPORTATION

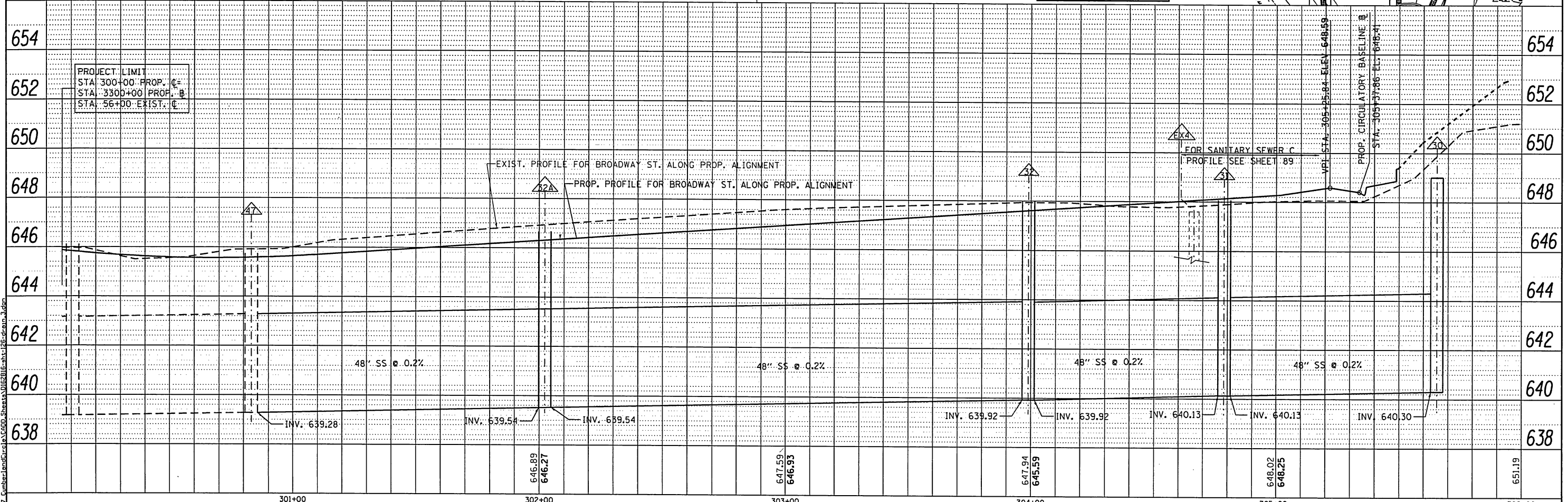
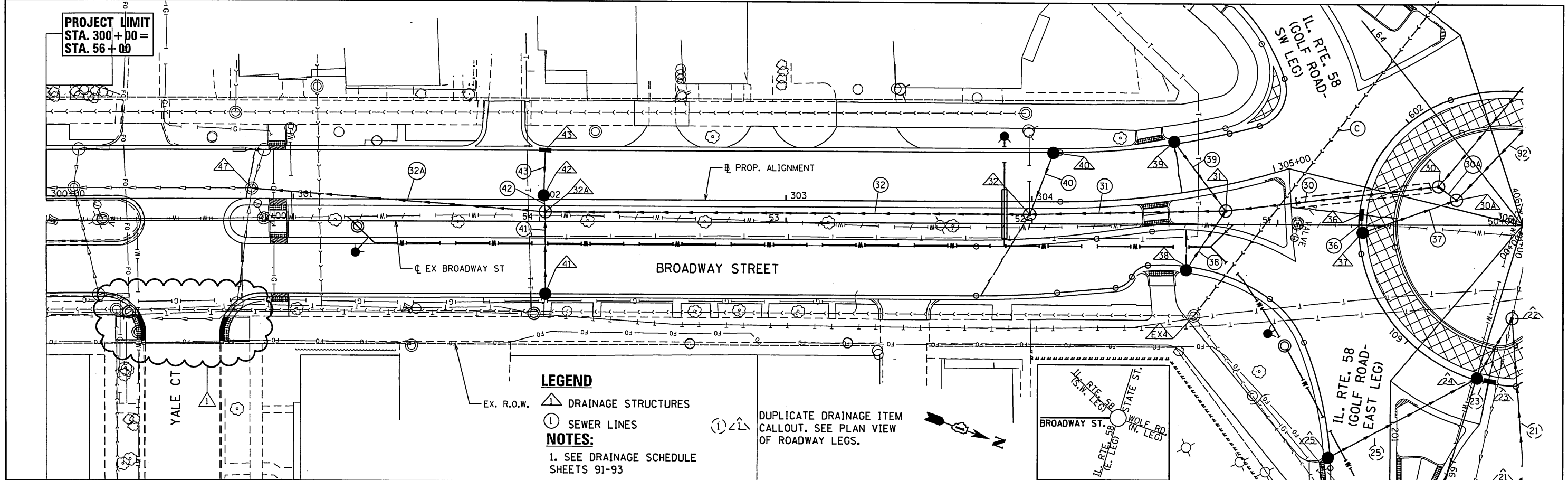
ROADWAY PLAN & PROFILE ALONG PROP. MEDIAN BASELINE
BROADWAY ST.

F.A.P. RTE. 339	SECTION 583-R	COUNTY COOK	TOTAL SHEETS 186	SHEET NO. 38
CONTRACT NO. 62B16			ILLINOIS FED. AID PROJECT	

REV 1-8-18

DATE	
BY	
PLANNED	
CHECKED	
NO. OF WAY CHECKED	
CADD FILE NAME	
NO.	

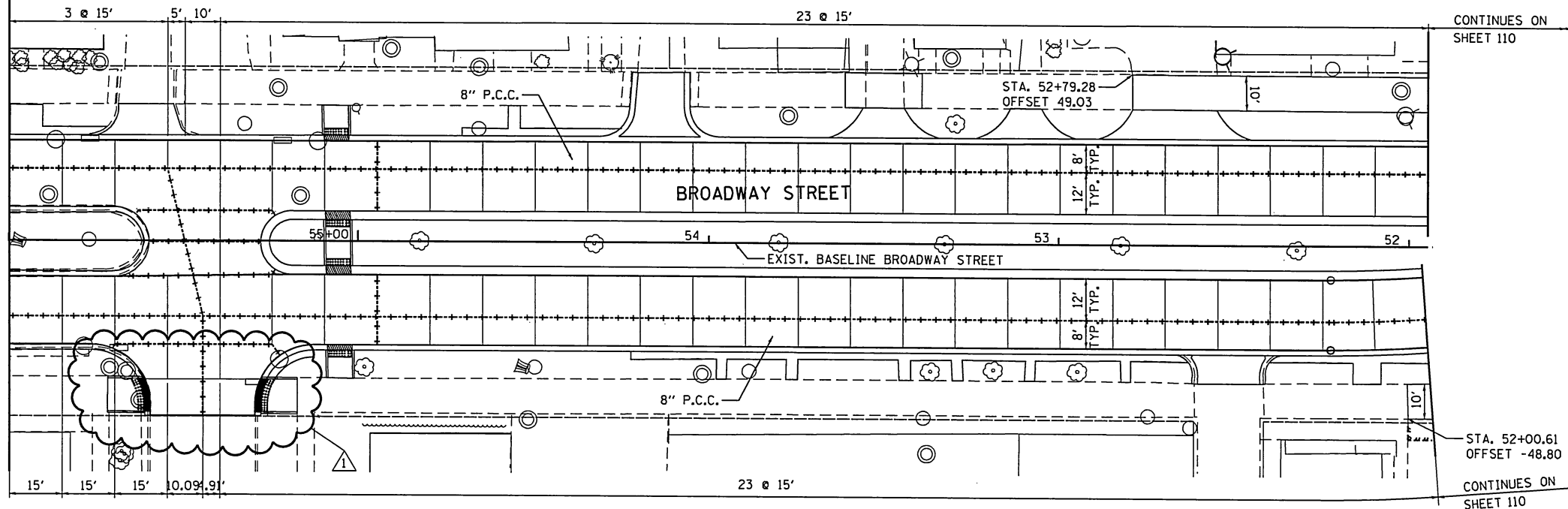
DATE	
BY	
PROF ILE	
PLOTTED	
CHECKED	
NO. OF STRUCTURE NOTATIONS CHFD	
NO.	



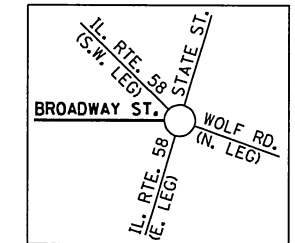
HBM ENGINEERING GROUP, LLC	USER NAME = ahmad.issa	DESIGNED - DA	REVISED - 12/01/2017	STATE OF ILLINOIS DEPARTMENT OF TRANSPORTATION	PROPOSED DRAINAGE & UTILITIES PLAN & PROFILE BROADWAY ST.	F.A.P. RTE. 339	SECTION 583-R	COUNTY COOK	TOTAL SHEETS 186	SHEET NO. 88
	PLOT SCALE = 48.0000' / 1" =	DRAWN - EA	REVISED - 01/04/2018 RTB			CONTRACT NO. 62B16				
	CHECKED - JMG	DATE - 10/17/2017	REVISED -			ILLINOIS FED. AID PROJECT				
	PLOT DATE = 1/4/2018	DATE -	REVISED -			SCALE: SHEET 7 OF 12 SHEETS STA. TO STA.				

REV 1-8-18

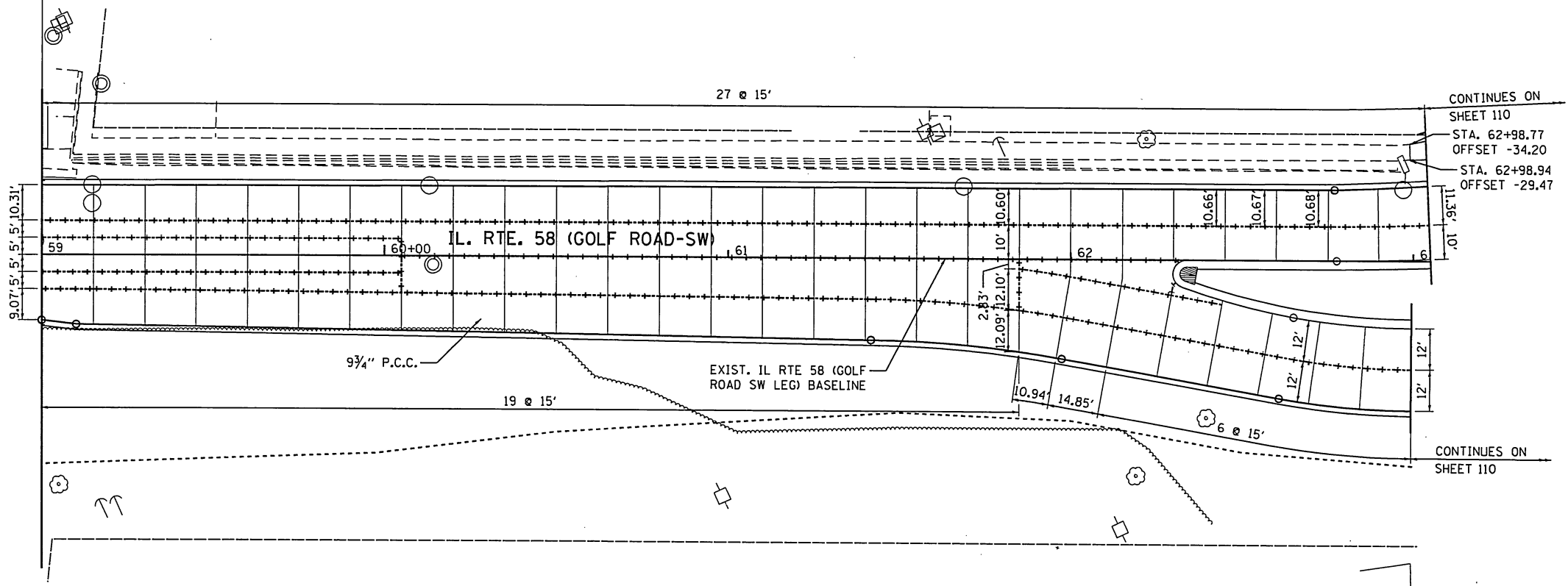
PROJECT LIMIT
STA. 300+00 =
STA. 56+00



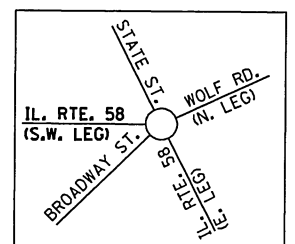
CONTINUES ON
SHEET 110



PROJECT LIMIT
STA. 400+00 =
STA. 59+00



CONTINUES ON
SHEET 110



LEGEND

- LONGITUDINAL CONTRACTION/
CONSTRUCTION JOINT
- TRANSVERSE JOINT
- EXPANSION JOINT

P:\1501-620_007_Cumberland\cpl\CGDD_Sheet\0152816-akt-213-jointing02_Broadway&Golf_Sk.dgn



USER NAME = ahmad.issa	DESIGNED - KJD	REVISED - 12/01/2017
DRAWN - KJD	REVISED - 01/04/2018 RTB	
PLOT SCALE = 40,0000' / in.	CHECKED - JMG	REVISED -
PLOT DATE = 1/4/2018	DATE - 10/17/2017	REVISED -

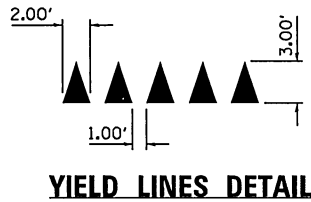
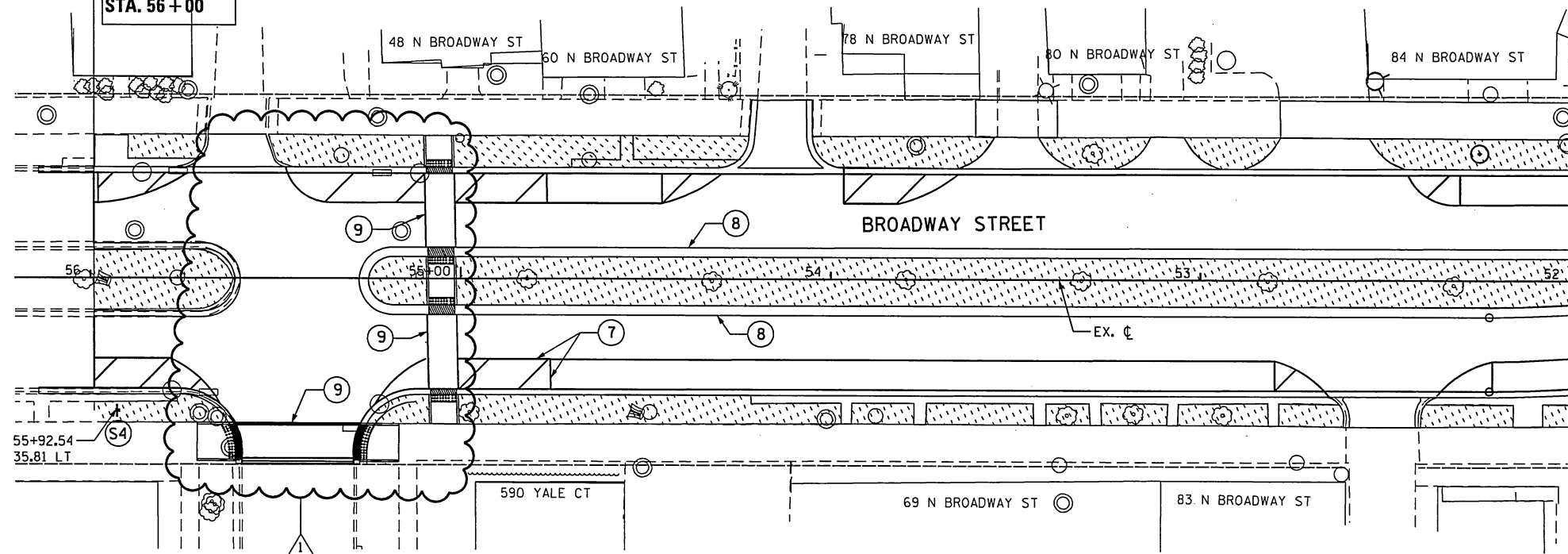
STATE OF ILLINOIS
DEPARTMENT OF TRANSPORTATION

ROADWAY JOINTING PLAN
BROADWAY ST. & GOLF RD. (WEST)
 SCALE: SHEET 3 OF 4 SHEETS STA. TO STA.

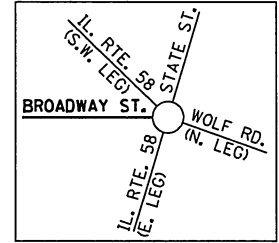
F.A.P. RTE.	SECTION	COUNTY	TOTAL SHEETS	SHEET NO.
339	583-R	COOK	186	112
CONTRACT NO. 62B16				
ILLINOIS FED. AID PROJECT				

REV 1-8-18

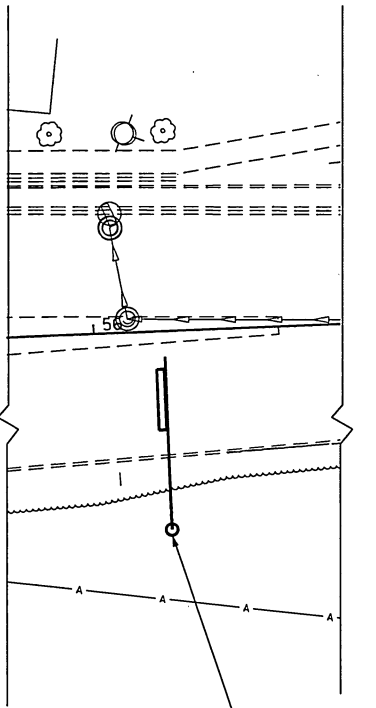
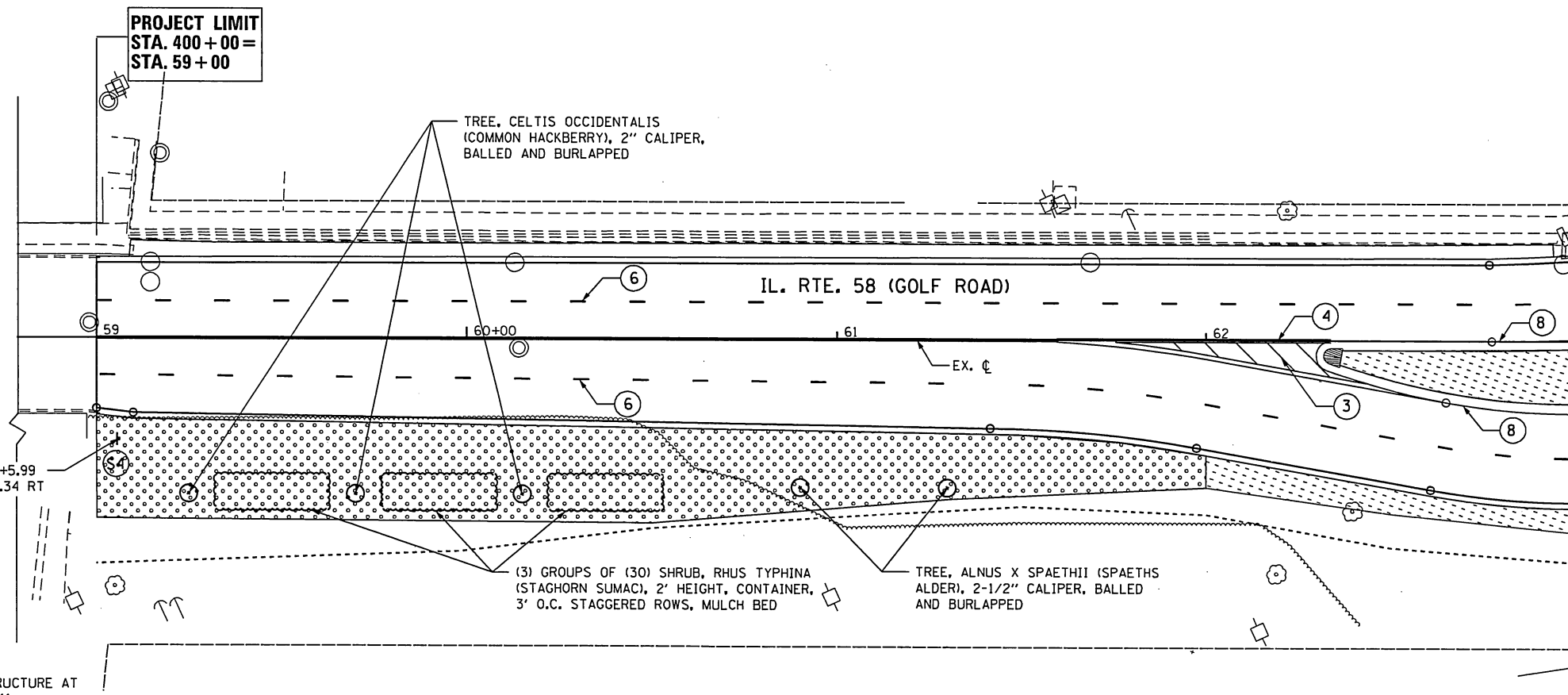
PROJECT LIMIT
STA. 300+00=
STA. 56+00



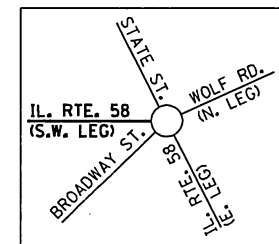
MATCH LINE STA 52+00
SEE ROUNDABOUT ON SHEET 130



PROJECT LIMIT
STA. 400+00=
STA. 59+00



MATCH LINE STA 63+00
SEE ROUNDABOUT ON SHEET 130



NOTE
1. FOR LEGEND, SEE SHEET 92.

P:\1301-638_007_Lumberland\Crp\LA\600_Sheet\13016-Sub-302-PMK3_Broadway\Golf West.dwg



USER NAME = ahmed.1990	DESIGNED - EA	REVISED - 12/01/2017
PLOT SCALE = 40,0000' / in.	DRAWN - EA	REVISED - 01/04/2018 RTB
PLOT DATE = 1/4/2018	CHECKED - RB	REVISED -
	DATE - 10/17/2017	REVISED -

STATE OF ILLINOIS
DEPARTMENT OF TRANSPORTATION

PAVEMENT MARKING, LANDSCAPING & SIGNING PLAN
BROADWAY ST. & GOLF RD. (WEST)

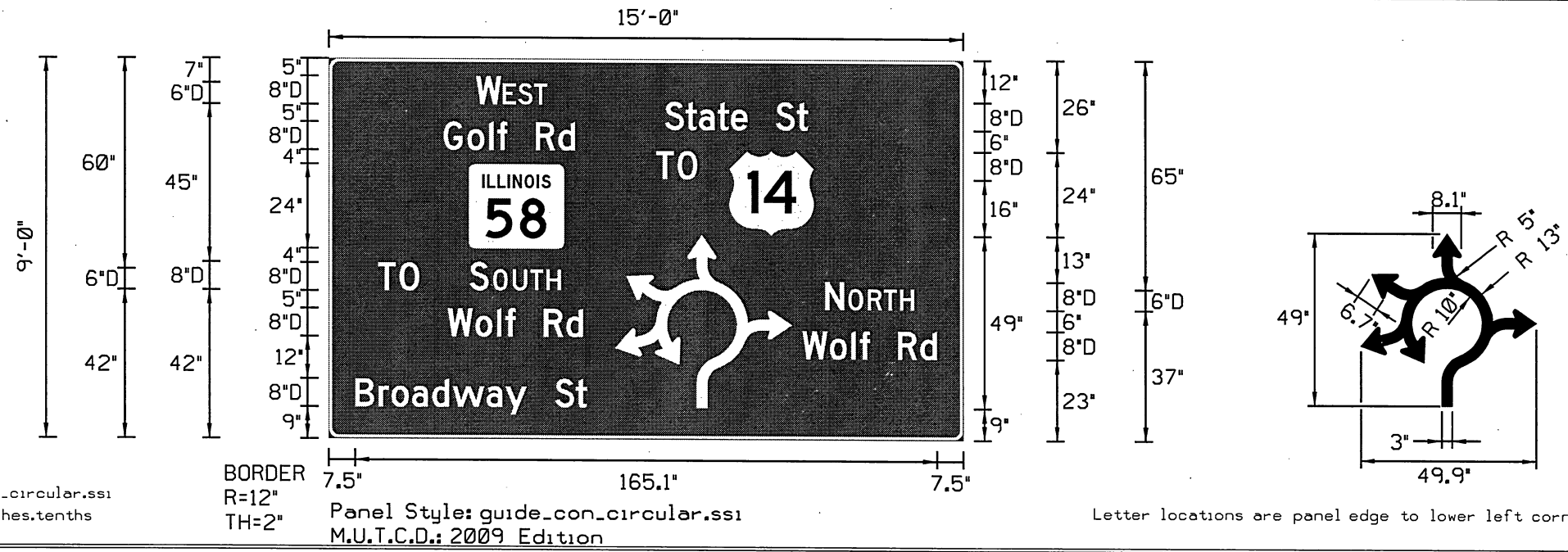
SCALE: SHEET 3 OF 4 SHEETS STA. 56+00 TO STA. 62+00

F.A.P. RTE.	SECTION	COUNTY	TOTAL SHEETS	SHEET NO.
339	583-R	COOK	186	132
				CONTRACT NO. 62B16
ILLINOIS FED. AID PROJECT				

REV 1-8-18

SIGN DETAIL

1:40



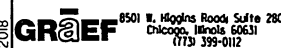
SIGN NUMBER	
WIDTH x HGHT.	15'-0" x 9'-0"
BORDER WIDTH	2"
CORNER RADIUS	12"
MOUNTING	Overhead
BACKGROUND	TYPE: Reflective COLOR: Green
LEGEND/BORDER	TYPE: Reflective COLOR: White/White

SYMBOL	ROT	X	Y	WID	HT
M1-4	0	13.5	58	24	24
M1-1100 A-2-32-15D	0	39.7	54	27	24
Associative Region	0	81.2	9	49.9	49

LETTER POSITIONS (X)

										LENGTH	SERIES/SIZE
W	E	S	T								D 2000
41.7	49.4	53.7	58.2							20.2	8,6
S	t	a	t	e	S	t					D 2000
95.3	101.2	104.9	110.2	114	118.7	126.7	132.6			40.6	8/6
G	o	l	f		R	d					D 2000
32.5	39.3	45.4	47.8	50.7	58.7	65				37.3	8/6
T	O										D 2000
92.8	98.8									11.7	8
T	O										D 2000
14	20									11.7	8
S	O	U	T	H							D 2000
39.9	46.6	52.2	57.1	61.8						25.9	8,6
N	O	R	T	H							D 2000
140.6	147.2	152.8	157.4	162						25.5	8,6
W	o	l	f		R	d					D 2000
33.7	41.5	47.7	50.1	53	61	67.3				38.4	8/6
W	o	l	f		R	d					D 2000
134.1	142	148.1	150.5	153.4	161.4	167.7				38.4	8/6
B	r	o	a	d	w	a	y	S	t		D 2000
7.5	14.1	17.8	23.5	29.3	35.1	44.7	50.1	56.1	64.1	65.8	8/6

H:\Jobs\2015\20153002-08\CAD\Site\dwg\00-Milwaukee\Cumberland Circle HWY 58.dgn 1/2/2018 2:22:46 PM



USER NAME = 0766	DESIGNED - MJ	REVISED - JSO 1/2/2018
PLOT SCALE = 3.6191 ft / in.	DRAWN - MJ	REVISED -
PLOT DATE = 1/2/2018	CHECKED - JO	REVISED -
	DATE -	REVISED -

STATE OF ILLINOIS
DEPARTMENT OF TRANSPORTATION

CUMBERLAND CIRCLE HIGHWAY 58 SIGN DETAILS

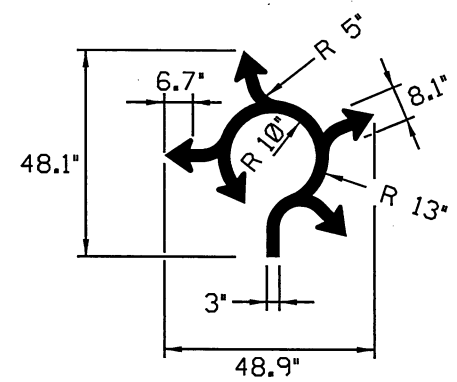
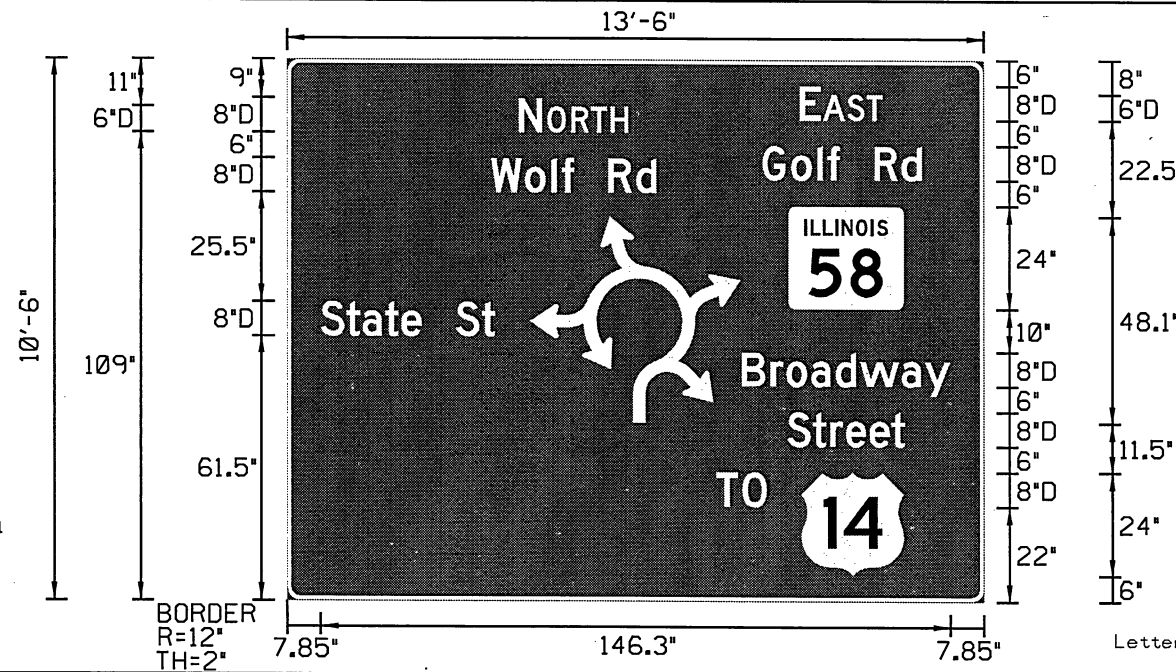
SCALE: SHEET 1 OF 5 SHEETS STA. TO STA.

F.A.P. RTE. 339	SECTION 583-R	COUNTY COOK	TOTAL SHEETS 186	SHEET NO. 152
CONTRACT NO. 62B16				
ILLINOIS FED. AID PROJECT				

REVISED SHEET 1-8-18

SIGN DETAIL

1:40



SIGN NUMBER	
WIDTH x HGHT.	13'-6" x 10'-6"
BORDER WIDTH	2"
CORNER RADIUS	12"
MOUNTING	Overhead
BACKGROUND	TYPE: Reflective COLOR: Green
LEGEND/BORDER	TYPE: Reflective COLOR: White/White

SYMBOL	ROT	X	Y	WID	HT
MI-1100	0	116.3	68	27	24
A-2-32-15D	0	56.4	41.5	48.9	48.1
Associative Region					
MI-4	0	119.3	6	24	24

Panel Style: guide_con_circular.ssi
M.U.T.C.D.: 2009 Edition

Panel Style: guide_con_circular.ssi
Dimensions are in inches.tenths

Letter locations are panel edge to lower left corner

LETTER POSITIONS (X)

															LENGTH	SERIES/SIZE
E	A	S	T													D 2000
119.1	124.5	130.1	134.7													19.3 8,6
N	O	R	T	H												D 2000
53.9	60.5	66.1	70.7	75.3												25.5 8,6
G	o	l	f		R	d										D 2000
110.3	117	123.1	125.5	128.4	136.4	142.7										37.3 8/6
W	o	l	f		R	d										D 2000
47.4	55.3	61.4	63.8	66.7	74.7	81										38.4 8/6
S	t	a	t	e		S	t									D 2000
7.8	13.8	17.4	22.8	26.6	31.3	39.3	45.2									40.6 8/6
B	r	o	a	d	w	a	y									D 2000
105.5	112.2	115.8	121.6	127.4	133.1	142.7	148.2									48.6 8/6
S	t	r	e	e	t											D 2000
116.1	122	126.1	129.8	135.3	140.4											27.5 8/6
T	O															D 2000
99.7	105.7															11.7 8

ENTIRE SHEET REVISED

H:\Jobs\2015\20153002-08\CAD\Site\ dgn\00-Milwaukee\Cumberland Circle HWY 58.dgn 1/2/2018 2:22:52 PM

6501 W. Higgins Road Suite 280 Chicago, Illinois 60631 (773) 399-0112	USER NAME = 0766	DESIGNED - MJ	REVISED - JSO 1/2/2018	STATE OF ILLINOIS DEPARTMENT OF TRANSPORTATION	CUMBERLAND CIRCLE HIGHWAY 58 SIGN DETAILS	F.A.P. RTE. 339	SECTION 583-R	COUNTY COOK	TOTAL SHEETS 186	SHEET NO. 153			
	PLOT SCALE = 3.6191 ft / in.	CHECKED - JD	REVISED -			SCALE:	SHEET 2 OF 5 SHEETS	STA.	TO STA.	ILLINOIS FED. AID PROJECT			
	PLOT DATE = 1/2/2018	DATE -	REVISED -			CONTRACT NO. 62B16							
	REVISIONS:												

REVISOR SHEET 1-8-18