

STATE OF ILLINOIS  
DEPARTMENT OF TRANSPORTATION

\* 27+1 = 28 TOTAL SHEETS

F.A.I. RTE.	SECTION	COUNTY	TOTAL SHEETS	SHEET NO.
57&74	*	**	28	1
ILLINOIS CONTRACT NO. 70C84				

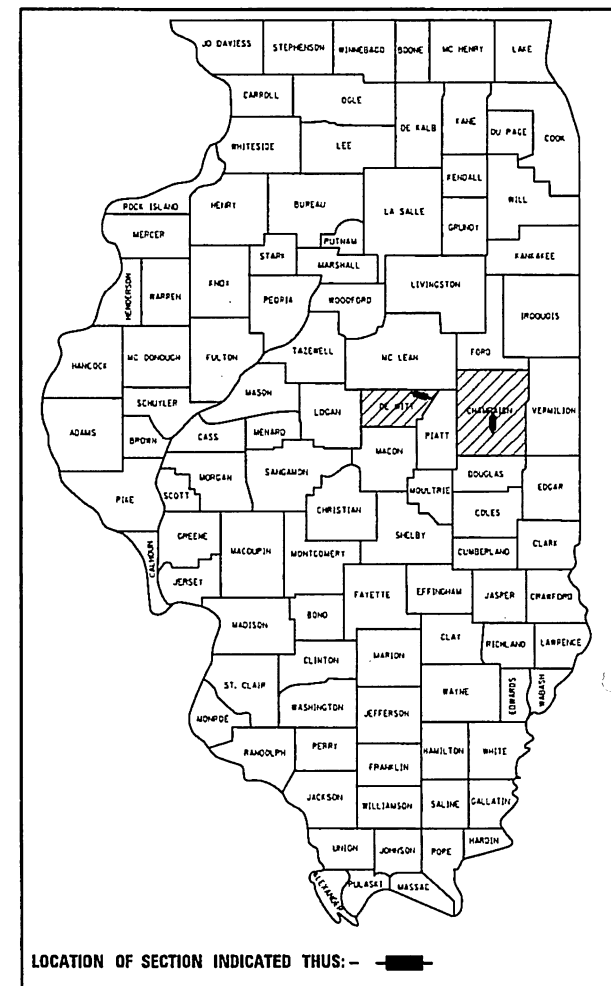
\* D5 BRIDGE PAINTING 2018-2  
\*\* CHAMPAIGN & DEWITT

FOR INDEX OF SHEETS, SEE SHEET NO. 2  
FOR SUMMARY OF QUANTITIES, SEE SHEETS 7-8

# PROPOSED HIGHWAY PLANS

F.A.I. ROUTE 57 (I-57) & F.A.I. ROUTE 74 (I-74)  
SECTION D5 BRIDGE PAINTING 2018-2  
PROJECT NHPP-YK7Q(499)  
BRIDGE PAINTING  
CHAMPAIGN & DEWITT COUNTIES

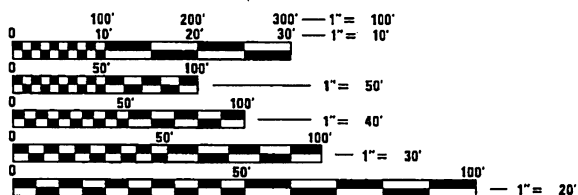
C-95-034-18



CURRENT TRAFFIC DATA	
AADT @ F.A.I. 57 (N.B.) LOCATION #1 AADT (2016)	S.N. 010-0009 13,000
AADT @ F.A.I. 57 (S.B.) LOCATION #2 AADT (2016)	S.N. 010-0010 12,600
AADT @ IL 10/FAP 801 UNDER F.A.I. 57 LOCATION #1 & #2 (2016)	S.N. 010-0009 & 010-0010 8,150
AADT @ F.A.I. 74 (E.B.) LOCATION #3 AADT (2016)	S.N. 020-0030 10,500
AADT @ F.A.I. 74 (W.B.) LOCATION #4 AADT (2016)	S.N. 020-0031 10,200

**TRAFFIC DATA LOCATIONS**

- LOC. #1 = S. N. 010-0009 - FAI 57 (NB) CARRIES FAI 57 OVER IL. 10 AND ICRR - 1.5 MILES S. OF FAI 72 CHAMPAIGN COUNTY
- LOC. #2 = S. N. 010-0010 - FAI 57 (SB) CARRIES FAI 57 OVER IL. 10 AND ICRR - 1.5 MILES S. OF FAI 72 CHAMPAIGN COUNTY
- LOC. #3 = S. N. 020-0030 - FAI 74 (EB) OVER ICRR RAILROAD 0.8 MILES N. OF FARMER CITY, IN DEWITT COUNTY
- LOC. #4 = S. N. 020-0031 - FAI 74 (WB) OVER ICRR RAILROAD 0.8 MILES N. OF FARMER CITY, IN DEWITT COUNTY



FULL SIZE PLANS HAVE BEEN PREPARED USING STANDARD ENGINEERING SCALES. REDUCED SIZED PLANS WILL NOT CONFORM TO STANDARD SCALES. IN MAKING MEASUREMENTS ON REDUCED PLANS, THE ABOVE SCALES MAY BE USED.

J.U.L.I.E.  
JOINT UTILITY LOCATION INFORMATION FOR EXCAVATION  
1-800-892-0123  
OR 811

PROJECT ENGINEER: NANCY FASIG  
SQUAD LEADER: STEVE COOMBES  
DESIGNER: BYRON SMITH  
(217)465-4181

CONTRACT NO. 70C84

FOR LOCATION MAPS, SEE SHEETS 4 & 6

STATE OF ILLINOIS  
DEPARTMENT OF TRANSPORTATION

SUBMITTED October 17, 2017  
Paul A. James  
REGIONAL ENGINEER

Nov 30, 2017  
Margaret M. Adzick  
ENGINEER OF DESIGN AND ENVIRONMENT

Nov 30, 2017  
David A. [Signature]  
DIRECTOR OF PROGRAM DEVELOPMENT 2

PRINTED BY THE AUTHORITY  
OF THE STATE OF ILLINOIS

# INDEX OF SHEETS

SHEET NO.	DESCRIPTION
1	COVER SHEET
2	INDEX OF SHEETS, HIGHWAY STANDARDS, & GENERAL NOTES
3-6	DESCRIPTIONS & MAPS FOR LOCATIONS #1 THROUGH #4
7-8	SUMMARY OF QUANTITIES
9-16	LOCATION #1 & #2 STRUCTURE DETAILS
17-22	LOCATION #3 & #4 STRUCTURE DETAILS
23-27	WIDTH RESTRICTION SIGNAGE DETAILS
28	DETAIL FOR TEMPORARY RUMBLE STRIPS (SPECIAL)

# HIGHWAY STANDARDS

STANDARD NO.	DESCRIPTION
000001-06	STANDARD SYMBOLS, ABBREVIATIONS AND PATTERNS
701001-02	OFF-ROAD OPERATIONS, 2L, 2W, MORE THAN 15' (4.5 m) AWAY
701006-05	OFF-ROAD OPERATIONS, 2L, 2W, 15' (4.5 m) TO 24" (600 mm) FROM PAVEMENT EDGE
701101-05	OFF-ROAD OPERATIONS, MULTILANE, 15' (4.5 m) TO 24" (600 mm) FROM PAVEMENT EDGE
701106-02	OFF-ROAD OPERATIONS, MULTILANE, MORE THAN 15' (4.5 m) AWAY
701201-04	LANE CLOSURE, 2L, 2W, DAY ONLY, FOR SPEEDS ≥ 45 MPH
701316-12	LANE CLOSURE, 2L, 2W, BRIDGE REPAIR, FOR SPEEDS ≥ 45 MPH
701400-09	APPROACH TO LANE CLOSURE, FREEWAY/EXPRESSWAY
701401-11	LANE CLOSURE, FREEWAY/EXPRESSWAY
701402-12	LANE CLOSURE, FREEWAY/EXPRESSWAY, WITH BARRIER
701406-11	LANE CLOSURE, FREEWAY/EXPRESSWAY, DAY OPERATIONS ONLY
701411-09	LANE CLOSURE, MULTILANE, AT ENTRANCE OR EXIT RAMP, FOR SPEEDS ≥ 45 MPH
701426-09	LANE CLOSURE, MULTILANE, INTERMITTENT OR MOVING OPER., FOR SPEEDS ≥ 45 MPH
701901-07	TRAFFIC CONTROL DEVICES

# GENERAL NOTES

**G.N.-100**  
ENGLISH UNITS OF MEASURE SHALL GOVERN OVER AND SUPERSEDE ANY METRIC UNITS SHOWN IN THIS CONTRACT. WHERE INCLUDED, METRIC UNITS ARE FOR INFORMATION ONLY.

**G.N.-100A**  
ELECTRONIC FILES AND/OR ELECTRONIC SURVEY INFORMATION INCLUDING CADD FILES WILL NOT BE AVAILABLE TO THE CONTRACTOR.

**GN 105.07C**  
EXISTING STATE-OWNED AND MAINTAINED UNDERGROUND UTILITY FACILITIES EXIST WITHIN THE ROW. THE DEPARTMENT IS NOT A MEMBER OF JULIE AND DOES NOT LOCATE IT'S OWN FACILITIES. THE CONTRACTOR SHALL BE RESPONSIBLE AT THEIR OWN EXPENSE FOR SECURING AN APPROVED LOCATING FIRM TO LOCATE ALL EXISTING IDOT UNDERGROUND FACILITIES PRIOR TO COMMENCING ANY EXCAVATION, PER THE REQUIREMENTS OF ARTICLE 803 OF THE STANDARD SPECIFICATIONS. UTILITY LOCATES MAY ALSO BE REQUIRED OUTSIDE THE PROJECT LIMITS, SUCH AS FOR TRAFFIC CONTROL SIGNING AND OTHER ITEMS. THE CONTRACTOR MAY OBTAIN, ON REQUEST, PLANS OF EXISTING ELECTRICAL FACILITIES FROM THE DEPARTMENT. FOR FURTHER INFORMATION, THE CONTRACTOR MAY CONTACT THE DISTRICT TRAFFIC OPERATIONS ENGINEER, GARY SIMS, AT 217-251-4859.

THE CONTRACTOR SHALL ALSO BE RESPONSIBLE FOR LOCATING AND PROVIDING PROTECTION FOR FACILITIES DURING ALL PHASES OF CONSTRUCTION. IF, AT ANY TIME, THE FACILITIES ARE DAMAGED, THE CONTRACTOR SHALL IMMEDIATELY NOTIFY THE DEPARTMENT AND MAKE ALL NECESSARY ARRANGEMENTS FOR REPAIR TO THE SATISFACTION OF THE ENGINEER. THIS WORK SHALL BE INCLUDED IN THE CONTRACT BID PRICE AND NO ADDITIONAL COMPENSATION WILL BE ALLOWED.

**G.N.-107.12**  
THE NAME, ADDRESS AND TELEPHONE NUMBER OF THE LOCAL RAILROAD CONTACT IS:

Mr. Paul Chojenski  
Manager, Public Projects CN  
CN Railroad  
17641 South Ashland Avenue  
Homewood, IL 60430  
(708) 332-3557

SPECIAL ATTENTION IS CALLED TO ARTICLE 107.12 REGARDING RAILROAD FLAGGERS. THE NAME, ADDRESS AND TELEPHONE NUMBER OF THE RAILROAD CONTACT PERSON FOR FLAGGERS IS:

Ms. Mary Ellen Carmody  
700 Pershing Road  
Pontiac, MI 48340  
(734) 783-4533

SOME RAILROADS REQUIRE CONTRACTORS TO OBTAIN A RIGHT OF ENTRY PERMIT BEFORE ENTERING UPON RAILROAD RIGHT OF WAY. IT IS THE RESPONSIBILITY OF THE CONTRACTOR TO OBTAIN THE RAILROAD RIGHT OF ENTRY PERMIT FROM THE THE RAILROAD IF REQUIRED.

**G.N.-501A**  
THE EXISTING STRUCTURAL STEEL COATING CONTAINS LEAD. THE CONTRACTOR SHALL FOLLOW THE GUIDE BRIDGE SPECIAL PROVISIONS FOR "CONTAINMENT AND DISPOSAL OF LEAD PAINT CLEANING RESIDUES" TO DEAL WITH THE PRESENCE OF LEAD ON THIS PROJECT.

**G.N.-506 (SPL.)**  
ALL FINAL SURFACES OF THE BEAMS SHALL BE PAINTED GRAY (MUNSELL COLOR STANDARD - 5B 7/1) EXCEPT THE EXTERIOR SURFACES OF THE EXTERIOR BEAMS WHICH SHALL BE PAINTED WITH EITHER INTERSTATE GREEN (MUNSELL COLOR STANDARD 7.5G 4/8) OR REDDISH BROWN (MUNSELL COLOR STANDARD 2.5YR 3/4) AS SPECIFIED UNDER THE DESCRIPTION FOR EACH STRUCTURE.

ONLY STRUCTURAL STEEL AND OTHER DESIGNATED SURFACES SHALL BE PAINTED. ALL OTHER SURFACES SHALL BE PROTECTED FROM CONTRACTORS BLASTING AND PAINTING OPERATIONS. ANY AREAS DAMAGED BY BLASTING OR OVERSPRAY WILL BE REMOVED OR REPAIRED AT THE CONTRACTOR'S EXPENSE AND NO ADDITIONAL COMPENSATION WILL BE ALLOWED.

CARE SHALL BE TAKEN NOT TO DAMAGE RUBBER BEARING OR JOINT COMPONENTS DURING BLASTING AND CLEANING OPERATIONS. ANY DAMAGE TO THESE COMPONENTS SHALL BE REPAIRED AT CONTRACTORS EXPENSE.

THE SSPC-QP1 AND QP2 PAINTING CONTRACTOR CERTIFICATIONS WILL BE REQUIRED FOR THIS CONTRACT.

ALL TRASH AND PAINTING DEBRIS, EXCLUDING WASTE BARRELS OR ROLL-OFF DUMPSTERS, SHALL BE REMOVED BEFORE BEGINNING WORK AT ANOTHER LOCATION.

2 YEAR PAINT WARRANTY REQUIRED FOR STRUCTURES NO.1 AND NO. 2

FILE NAME =	USER NAME = coombessf	DESIGNED -	REVISED -	<b>STATE OF ILLINOIS DEPARTMENT OF TRANSPORTATION</b>	<b>INDEX OF SHEETS, HIGHWAY STANDARDS &amp; GENERAL NOTES</b>	F.A.I. RTE.	SECTION	COUNTY	TOTAL SHEETS	SHEET NO.	* CHAMPAIGN & DEWITT CONTRACT NO. 70C84 ILLINOIS FED. AID PROJECT
pw:\IL084EBID\INTEG\Illinois.gov\PIDOT\Documents\IDOT Offices\District 5\Projects\0577\DrawnData\Design\05770C84-Sht-Gennotes	PLLOT SCALE = 40.0000' / in.	CHECKED -	REVISED -			57&74	**	*	27	2	
*MODELNAME*	PLLOT DATE = 10/11/2017	DATE -	REVISED -			** D5 BRIDGE PAINTING 2018-2					
						SCALE:	SHEET	OF	SHEETS	STA.	

REV 12-22-17

## SUMMARY OF QUANTITIES

LOCATION OF WORK:

LOC. #1  
F.A.I. 57  
S.N. 010-0009  
CHAMP CO.  
URBAN  
90% FED / 10 % STATE  
0047

LOC. #2  
F.A.I. 57  
S.N. 010-0010  
CHAMP CO.  
URBAN  
90% FED / 10 % STATE  
0047

LOC. #3  
F.A.I. 74  
S.N. 020-0030  
DEWITT CO.  
RURAL  
90% FED / 10 % STATE  
0047

LOC. #4  
F.A.I. 74  
S.N. 020-0031  
DEWITT CO.  
RURAL  
90% FED / 10 % STATE  
0047

CONSTRUCTION TYPE CODE:

CODE NO.	DESCRIPTION	UNIT	TOTAL QUANTITY	QUANTITY	QUANTITY	QUANTITY	QUANTITY
67100100	MOBILIZATION	L SUM	1.0	0.3	0.2	0.3	0.2
70100207	TRAFFIC CONTROL AND PROTECTION, STANDARD 701402	EACH	4.0			2.0	2.0
70100420	TRAFFIC CONTROL AND PROTECTION, STANDARD 701411	EACH	1.0				1.0
70100450	TRAFFIC CONTROL AND PROTECTION, STANDARD 701201	L SUM	1.0	0.5	0.5		
70100700	TRAFFIC CONTROL AND PROTECTION, STANDARD 701406	L SUM	1.0	0.5	0.5		
70400100	TEMPORARY CONCRETE BARRIER	FOOT	1200.0			600.0	600.0
70400200	RELOCATE TEMPORARY CONCRETE BARRIER	FOOT	1200.0			600.0	600.0
70600250	IMPACT ATTENUATORS, TEMPORARY (NON-REDIRECTIVE), TEST LEVEL 3	EACH	2.0			1.0	1.0
70600350	IMPACT ATTENUATORS, RELOCATE (NON-REDIRECTIVE), TEST LEVEL 3	EACH	2.0			1.0	1.0
X2700001	TEMPORARY RUMBLE STRIPS (SPECIAL)	EACH	32.0	8.0	8.0	8.0	8.0
X5067501	BRIDGE CLEANING AND PAINTING WARRANTY NUMBER 1	L SUM	1.0	1.0			
X5067502	BRIDGE CLEANING AND PAINTING WARRANTY NUMBER 2	L SUM	1.0		1.0		
X5067503	BRIDGE CLEANING AND PAINTING WARRANTY NUMBER 3	L SUM	1.0			1.0	
X5067504	BRIDGE CLEANING AND PAINTING WARRANTY NUMBER 4	L SUM	1.0				1.0

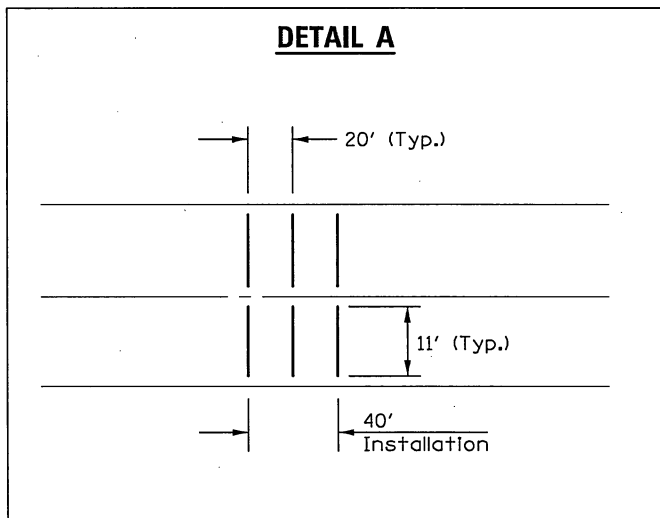
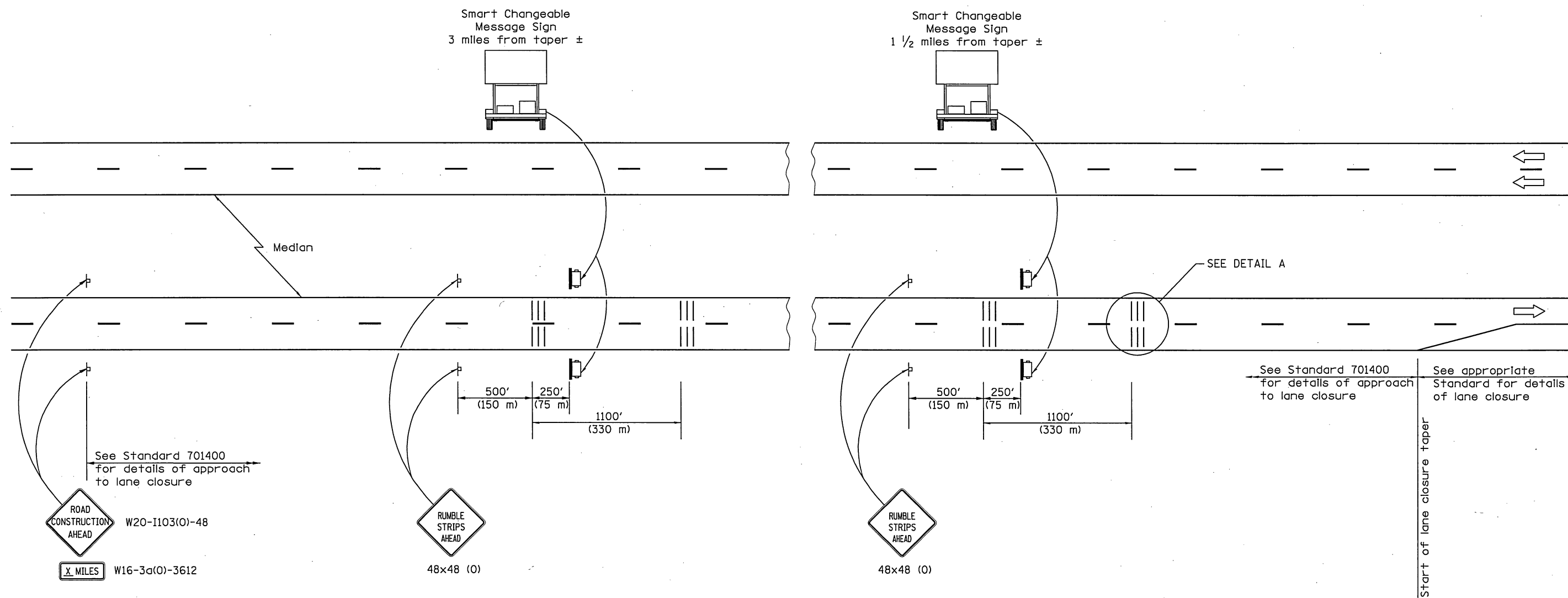


13

FILE NAME =	USER NAME = coombessf	DESIGNED -	REVISED -	<b>STATE OF ILLINOIS DEPARTMENT OF TRANSPORTATION</b>	<b>SUMMARY OF QUANTITIES</b>	F.A.I. RTE.	SECTION	COUNTY	TOTAL SHEETS	SHEET NO.
P:\IL\084EBIDINTEG\Illinois.gov\PIDOT\Documents\IDOT Offices\District 5\Projects\0570\DRAWING\Date\Design\0570C84-Sht-500.dgn PLOT SCALE = 48.0000' / in. PLOT DATE = 10/17/2017						57&74	**	*	27	7
CHECKED - DATE -						** D5 BRIDGE PAINTING 2018-2		CONTRACT NO. 70C84		
				SCALE:		SHEET 1 OF 2 SHEETS		STA. TO STA.		
						ILLINOIS FED. AID PROJECT				

11 10-22-17 REV

# DETAIL FOR TEMPORARY RUMBLE STRIPS (SPECIAL)



### SYMBOLS

- ▬ Sign
- ||| Temporary Rumble Strips (Special)
- ▭ Trailer Mounted Sign

### GENERAL NOTES

Remove the Temporary Rumble Strips (Special) prior to the removal of the advanced warning signs.

All dimensions are in Inches (millimeters) unless otherwise shown.

FILE NAME =	USER NAME = coombessf	DESIGNED - JWS	REVISED -	<b>STATE OF ILLINOIS DEPARTMENT OF TRANSPORTATION</b>	<b>DETAIL FOR TEMPORARY RUMBLE STRIPS (SPECIAL)</b>	F.A.I. RTE.	SECTION	COUNTY	TOTAL SHEETS	SHEET NO.	
p:\1\084EBIDINTEG\Illinois.gov\PWIDOT\Documents\IDOT Offices\District 5\Projects\057\DRAWING\Design\ASG70C84-Sht-WRD.dgn						REVISED -	57&74	..	CHAMPAIGN	38	
PLOT SCALE = 0.1667' / in.						REVISED -	** D5 BRIDGE PAINTING 2018-2		CONTRACT NO. 70C84		
PLOT DATE = 11/30/2017						REVISED -	ILLINOIS FED. AID PROJECT				
					SCALE: NONE	SHEET 1 OF 1 SHEETS		STA. TO STA.			

SHEET ADDED