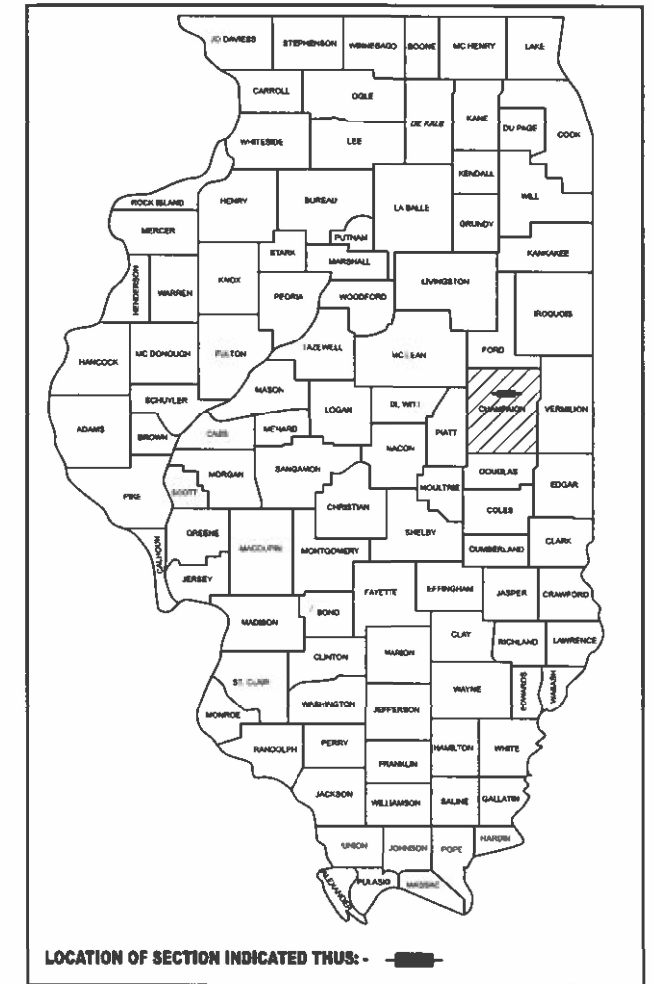


STATE OF ILLINOIS
DEPARTMENT OF TRANSPORTATION

F.A.P. RTE.	SECTION	COUNTY	TOTAL SHEETS	SHEET NO.
709	D5 CM PATCHING 2024-3	CHAMPAIGN	12	1
		ILLINOIS	CONTRACT NO. 70G87	

D-95-038-23



FOR INDEX OF SHEETS, SEE SHEET NO. 2
FOR SUMMARY OF QUANTITIES, SEE SHEET NO. 3

DESIGN DESIGNATION
OTHER PRINCIPAL ARTERIAL
MINOR ARTERIAL

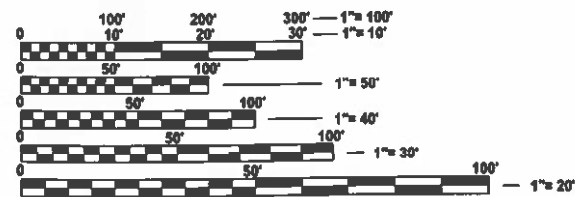
**PROPOSED
HIGHWAY PLANS**

**FAP ROUTE 709 (US 136)
SECTION D5 CM PATCHING 2024-3
PATCHING
CHAMPAIGN COUNTY
AT MEDIAN ON E & W SIDE OF I-57 W
OF RANTOUL; UNDER ICRR IN RANTOUL
C-95-071-23**

TRAFFIC DATA

	LEG "A" US 136	LEG "B" US 136	LEG "C" US 136
2023 ADT	5,900	10,600	12,700
PU & PC %	88.1	90.8	93.3
SU %	5.5	5	3.9
MU%	6.4	4.2	2.8
TRUCK ROUTE CLASS	CLASS II	CLASS II	CLASS II
N.H.S. ROUTE	NO	YES	YES
FUNCTIONAL CLASS	MIN. ART.	O.P.A.	O.P.A.

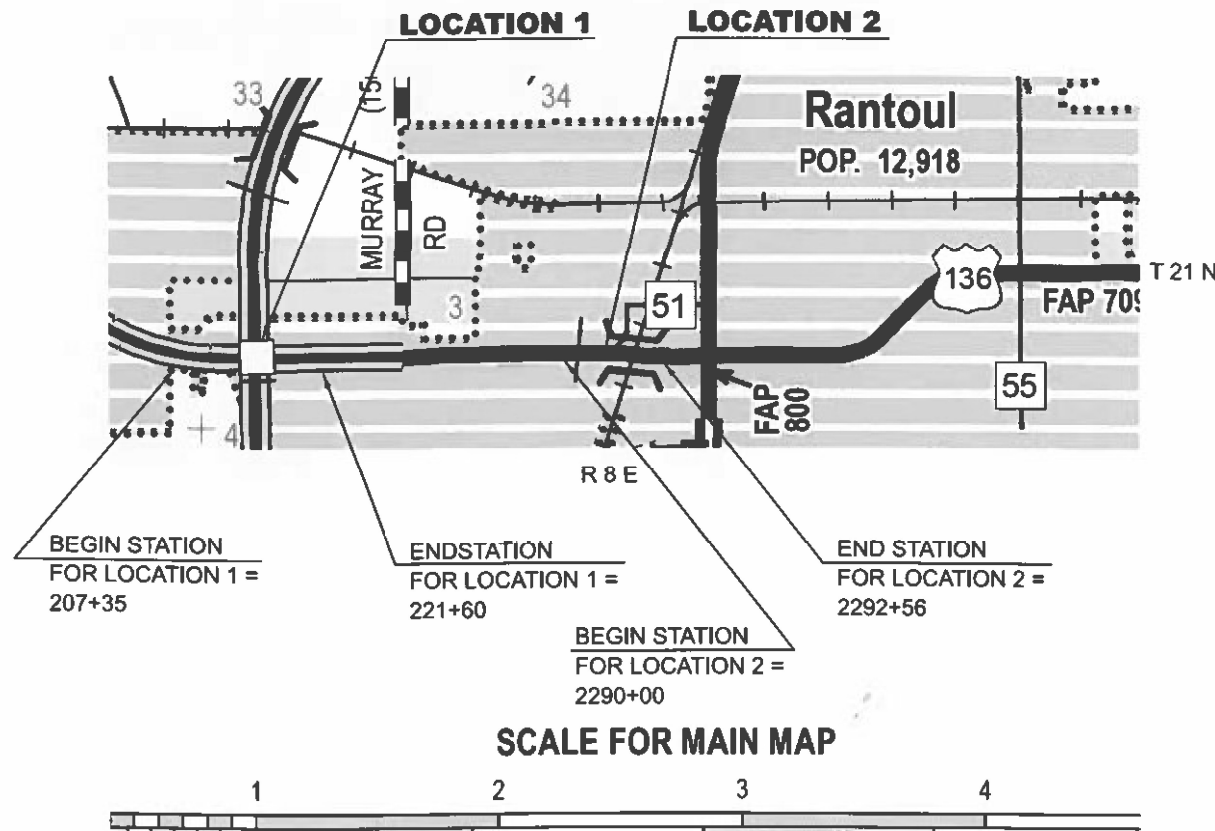
LEG "A" = US 136 W OF I-57
LEG "B" = US 136 E OF I-57
LEG "C" = US 136 UNDER ICRR



FULL SIZE PLANS HAVE BEEN PREPARED USING STANDARD ENGINEERING SCALES. REDUCED SIZED PLANS WILL NOT CONFORM TO STANDARD SCALES. IN MAKING MEASUREMENTS ON REDUCED PLANS, THE ABOVE SCALES MAY BE USED.

J.U.L.I.E.
JOINT UTILITY LOCATION INFORMATION FOR EXCAVATION
1-800-892-0123
OR 811 RANTOUL TOWNSHIP

PROJECT ENGINEER: JASON STULTS
DESIGNER: ROBERT NELSON
PHONE NUMBER: (217)465-4181
CONTRACT NO. 70G87



GROSS LENGTH = 11,680 FT. = 2.21 MILE
NET LENGTH = 171 FT. = 0.03 MILE

STATE OF ILLINOIS
DEPARTMENT OF TRANSPORTATION

SUBMITTED October 10, 2023
[Signature]
REGIONAL ENGINEER

December 8, 2023
[Signature]
ENGINEER OF DESIGN AND ENVIRONMENT

December 8, 2023
[Signature]
DIRECTOR OF HIGHWAYS PROJECT IMPLEMENTATION

**PRINTED BY THE AUTHORITY
OF THE STATE OF ILLINOIS**

INDEX OF SHEETS

SHEET NO.	DESCRIPTION
1	COVER SHEET
2	INDEX OF SHEETS
2	HIGHWAY STANDARDS
2	GENERAL NOTES
2	COMMITMENTS
3 - 4	SUMMARY OF QUANTITIES
5 - 6	TYPICAL CROSS SECTIONS
7	SCHEDULE OF QUANTITIES
8 - 10	PLAN SHEETS
11 - 12	CLASS A PATCHING (SPECIAL) DETAIL

HIGHWAY STANDARDS

STANDARD NO.	DESCRIPTION
000001-08	STANDARD SYMBOLS, ABBREVIATIONS AND PATTERNS
001001-02	AREAS OF REINFORCEMENT BARS
001006	DECIMAL OF AN INCH AND OF A FOOT
420001-10	PAVEMENT JOINTS
420701-03	PAVEMENT WELDED WIRE REINFORCEMENT
421001-03	BAR REINFORCEMENT FOR CRC PAVEMENT
442101-09	CLASS B PATCHES
701601-09	URBAN LANE CLOSURE, MULTILANE, 1W OR 2W WITH NONTRAVERSABLE MEDIAN
701606-10	URBAN SINGLE LANE CLOSURE, MULTILANE, 2W WITH MOUNTABLE MEDIAN
701611-01	URBAN HALF ROAD CLOSURE, MULTILANE, 2W WITH MOUNTABLE MEDIAN
701901-09	TRAFFIC CONTROL DEVICES

GENERAL NOTES

G.N.-100A
ELECTRONIC FILES AND/OR ELECTRONIC SURVEY INFORMATION INCLUDING CADD FILES WILL NOT BE AVAILABLE TO THE CONTRACTOR.

G.N.-107.12
THE NAME, ADDRESS AND TELEPHONE NUMBER OF THE LOCAL RAILROAD CONTACT IS:

Diane Lewis
Manager, Public Projects
CN Railroad
1006 E 4th Street
Waterloo, IA 50703
(319) 472-1031

SPECIAL ATTENTION IS CALLED TO ARTICLE 107.12 REGARDING RAILROAD FLAGGERS. THE NAME, ADDRESS AND TELEPHONE NUMBER OF THE RAILROAD CONTACT PERSON FOR FLAGGERS IS:

U.S. Flagging Desk
17641 South Ashland Avenue
Homewood, Illinois 60430
(682) 316-5097

SOME RAILROADS REQUIRE CONTRACTORS TO OBTAIN A RIGHT OF ENTRY PERMIT BEFORE ENTERING UPON RAILROAD RIGHT OF WAY. IT IS THE RESPONSIBILITY OF THE CONTRACTOR TO OBTAIN A RAILROAD RIGHT OF ENTRY PERMIT FROM THE RAILROAD IF REQUIRED BY THE RAILROAD(S).

G.N.-440B
THE EXISTING TIE BARS BETWEEN THE EXISTING PAVEMENT AND EXISTING MEDIANS, GUTTERS AND/OR COMBINATION CURB AND GUTTERS THAT ARE FOUND SUITABLE FOR REUSE SHALL BE CLEANED, STRAIGHTENED AND INCORPORATED INTO THE NEW CONSTRUCTION. ANY EXISTING TIE BARS THAT ARE FOUND UNSUITABLE TO BE INCORPORATED INTO THE PROPOSED CONSTRUCTION DUE TO EXCESSIVE RUSTING OR DISTRESS SHALL BE REMOVED FLUSH WITH THE FACE OF THE EXISTING CONCRETE AND DISPOSED OF OUTSIDE THE LIMITS OF THE RIGHT-OF-WAY IN ACCORDANCE WITH ARTICLE 202.03 OF THE STANDARD SPECIFICATIONS.

THIS WORK WILL NOT BE PAID FOR SEPARATELY BUT SHALL BE CONSIDERED INCLUDED IN THE VARIOUS REMOVAL PAY ITEMS AND NO ADDITIONAL COMPENSATION WILL BE ALLOWED.

G.N.-780 SPL
PAVEMENT MARKINGS FOR THIS PROJECT IS TO BE PERFORMED BY OTHERS. FIELD PERSONNEL WILL NOTIFY GARY SIMS, DISTRICT 5 TRAFFIC OPERATIONS ENGINEER AT (217) 251-4859 WHEN THE PROJECT IS COMPLETE AND READY FOR PAVEMENT MARKINGS.

NO COMMITMENTS

**STATE OF ILLINOIS
DEPARTMENT OF TRANSPORTATION**

**INDEX OF SHEETS, HIGHWAY STANDARDS,
GENERAL NOTES & COMMITMENTS**

USER NAME = Bridgette.Pierson	DESIGNED -	REVISED -
	DRAWN -	REVISED -
PLOT SCALE = 0.16666833' / in.	CHECKED -	REVISED -
PLOT DATE = 10/6/2023	DATE -	REVISED -

SCALE: NONE SHEET 1 OF 1 SHEETS STA. TO STA.

F.A.P. RTE.	SECTION	COUNTY	TOTAL SHEETS	SHEET NO.
709	D5 CM PATCHING 2024-3	CHAMPAIGN	12	2
CONTRACT NO. 70G87				
ILLINOIS FED. AID PROJECT				

MODEL: General Notes (Sheet)
FILE NAME: c:\p\work\p\pierson\0902462\0570G87-Sht-Gen_Notes.dgn

SUMMARY OF QUANTITIES

LOCATION OF WORK:	FAP 709 (US 136)	FAP 709 (US 136)
	URBAN	URBAN
	MINOR ARTERIAL	OTHER PRINCIPLE ARTERIAL
	207+35 TO 208+00	221+60 TO 222+27 AND 2290+00 TO 2292+56
FUNDING BREAKOUT:	CHAMPAIGN	CHAMPAIGN
	STATE 100%	STATE 100%
CONSTRUCTION TYPE CODE:	0006	0006

CODE NO.	ITEM	UNIT	TOTAL QUANTITY	QUANTITY	QUANTITY
44200050	WELDED WIRE REINFORCEMENT	SQ YD	578.0	0.0	578.0
44200970	CLASS B PATCHES, TYPE II, 10 INCH	SQ YD	16.0	0.0	16.0
44200974	CLASS B PATCHES, TYPE III, 10 INCH	SQ YD	30.0	0.0	30.0
44200976	CLASS B PATCHES, TYPE IV, 10 INCH	SQ YD	578.0	0.0	578.0
44201299	DOWL BARS 1 1/2"	EACH	626.0	0.0	626.0
44213000	PATCHING REINFORCEMENT	SQ YD	280.0	55.0	225.0
44213200	SAW CUTS	FOOT	1,572.0	168.0	1,404.0
44213206	TIE BAR 5/8"	EACH	327.0	70.0	257.0
67100100	MOBILIZATION	LUMP SUM	1.0	0.1	0.9
70102630	TRAFFIC CONTROL AND PROTECTION, STANDARD 701601	LUMP SUM	1.0	1.0	0.0
70102625	TRAFFIC CONTROL AND PROTECTION, STANDARD 701606	LUMP SUM	1.0	0.0	1.0
70102634	TRAFFIC CONTROL AND PROTECTION, STANDARD 701611	LUMP SUM	1.0	0.0	1.0
70103815	TRAFFIC CONTROL SURVELLANCE	CAL DAY	9.0	6.0	3.0

MODEL: SOQ 6 [Sheet]
FILE NAME: c:\p\work\wv\wv\pl\pl\sonbc\0902462\057\0687-Sht-SOQ.dgn

USER NAME = Bridgette.Pierson	DESIGNED -	REVISED -	STATE OF ILLINOIS DEPARTMENT OF TRANSPORTATION	SUMMARY OF QUANTITIES			F.A.P RTE.	SECTION	COUNTY	TOTAL SHEETS	SHEET NO.
PLOT SCALE = 0.16666633' / in.	CHECKED -	REVISED -					709	D5 CM PATCHING 2024-3	CHAMPAIGN	12	3
PLOT DATE = 10/18/2023	DATE -	REVISED -		SCALE: NONE SHEET 1 OF 2 SHEETS STA. TO STA.			CONTRACT NO. 70G87				
				ILLINOIS FED. AID PROJECT							

SUMMARY OF QUANTITIES

LOCATION OF WORK:	FAP 709 (US 136	FAP 709 (US 136)
	URBAN	URBAN
	MINOR ARTERIAL	OTHER PRINCIPLE ARTERIAL
	207+35 TO 208+00	221+60 TO 222+27 AND 2290+00 TO 2292+56
	CHAMPAIGN	CHAMPAIGN
FUNDING BREAKOUT:	STATE 100%	STATE 100%
CONSTRUCTION TYPE CODE:	0006	0006

	CODE NO.	ITEM	UNIT	TOTAL QUANTITY	QUANTITY	QUANTITY
	X4420559	CLASS A PATCHES, TYPE IV 10 INCH (SPECIAL)	SQ YD	277.0	118.0	159.0
	Z0013798	CONSTRUCTION LAYOUT	LUMP SUM	1.0	0.1	0.9
	Z0048665	RAILROAD PROTECTIVE LIABILITY INSURANCE	LUMP SUM	1.0	0.0	1.0

MODEL: SOQ 7 (Sheet)
 FILE NAME: c:\p\work\p\pierson\c0902462\0570G87-Sht-SOQ.dgn

USER NAME = Bridgette.Pierson	DESIGNED -	REVISED -
	DRAWN -	REVISED -
PLOT SCALE = 0.16666633' / in.	CHECKED -	REVISED -
PLOT DATE = 10/6/2023	DATE -	REVISED -

**STATE OF ILLINOIS
DEPARTMENT OF TRANSPORTATION**

SCHEDULE OF QUANTITIES

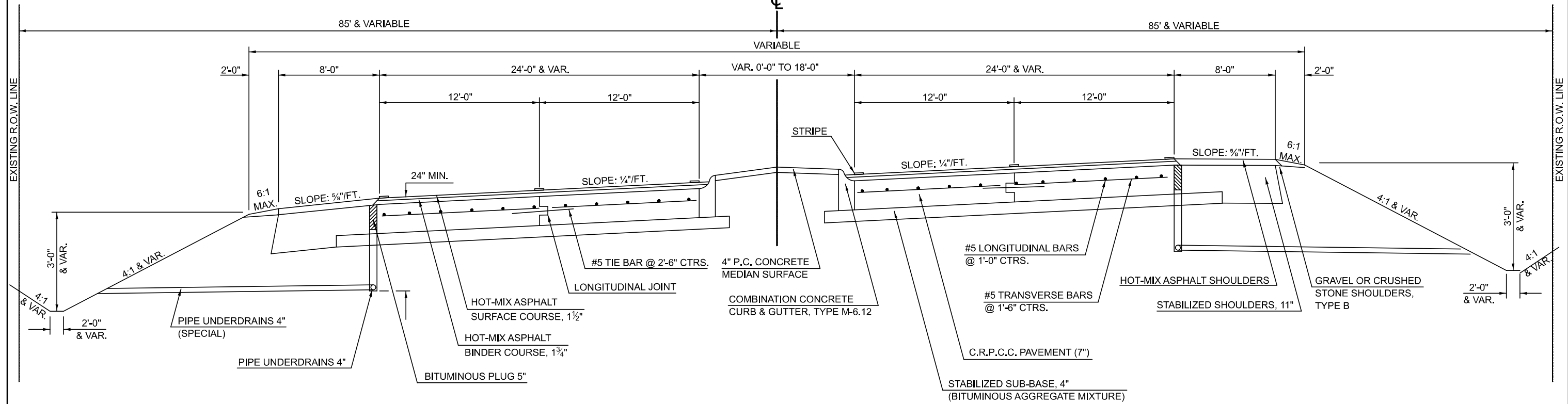
SCALE: NONE SHEET 2 OF 2 SHEETS STA. TO STA.

F.A.P. RTE.	SECTION	COUNTY	TOTAL SHEETS	SHEET NO.
709	D5 CM PATCHING 2024-3	CHAMPAIGN	12	4
CONTRACT NO. 70G87				
ILLINOIS FED. AID PROJECT				

EXISTING TYPICAL CROSS SECTION

LOCATION 1A

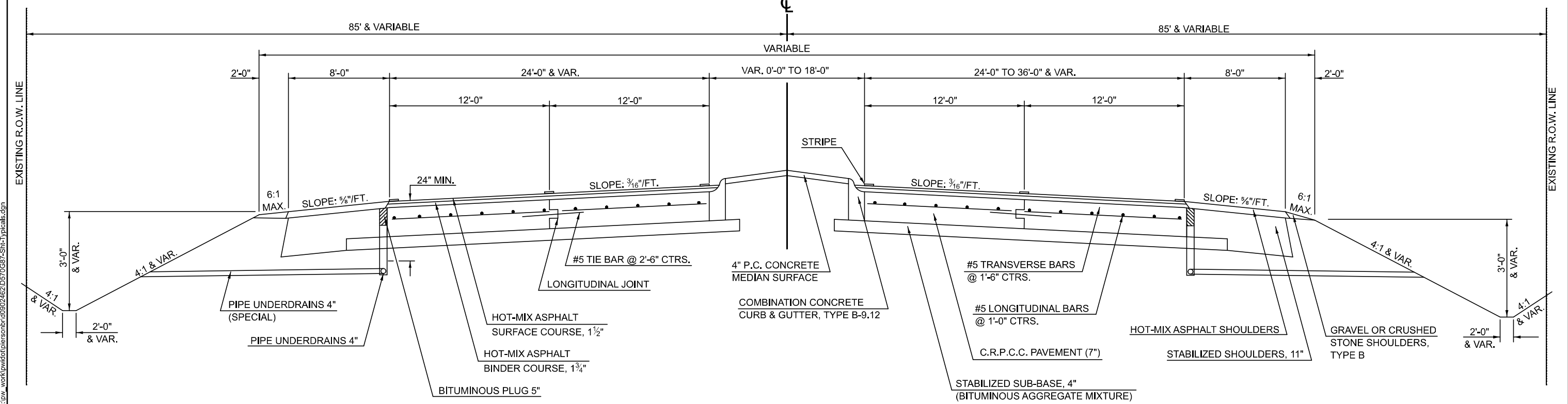
STATION 207+00.00 TO STATION 209+34.00



EXISTING TYPICAL CROSS SECTION

LOCATION 1B

STATION 221+00.00 TO STATION 223+00.00



MODEL: Loc 3 (Sheet)
FILE NAME: c:\p\work\1\typical\cross\1a\1b\1c\1d\1e\1f\1g\1h\1i\1j\1k\1l\1m\1n\1o\1p\1q\1r\1s\1t\1u\1v\1w\1x\1y\1z\1aa\1ab\1ac\1ad\1ae\1af\1ag\1ah\1ai\1aj\1ak\1al\1am\1an\1ao\1ap\1aq\1ar\1as\1at\1au\1av\1aw\1ax\1ay\1az\1ba\1bb\1bc\1bd\1be\1bf\1bg\1bh\1bi\1bj\1bk\1bl\1bm\1bn\1bo\1bp\1bq\1br\1bs\1bt\1bu\1bv\1bw\1bx\1by\1bz\1ca\1cb\1cc\1cd\1ce\1cf\1cg\1ch\1ci\1cj\1ck\1cl\1cm\1cn\1co\1cp\1cq\1cr\1cs\1ct\1cu\1cv\1cw\1cx\1cy\1cz\1da\1db\1dc\1dd\1de\1df\1dg\1dh\1di\1dj\1dk\1dl\1dm\1dn\1do\1dp\1dq\1dr\1ds\1dt\1du\1dv\1dw\1dx\1dy\1dz\1ea\1eb\1ec\1ed\1ee\1ef\1eg\1eh\1ei\1ej\1ek\1el\1em\1en\1eo\1ep\1eq\1er\1es\1et\1eu\1ev\1ew\1ex\1ey\1ez\1fa\1fb\1fc\1fd\1fe\1ff\1fg\1fh\1fi\1fj\1fk\1fl\1fm\1fn\1fo\1fp\1fq\1fr\1fs\1ft\1fu\1fv\1fw\1fx\1fy\1fz\1ga\1gb\1gc\1gd\1ge\1gf\1gg\1gh\1gi\1gj\1gk\1gl\1gm\1gn\1go\1gp\1gq\1gr\1gs\1gt\1gu\1gv\1gw\1gx\1gy\1gz\1ha\1hb\1hc\1hd\1he\1hf\1hg\1hh\1hi\1hj\1hk\1hl\1hm\1hn\1ho\1hp\1hq\1hr\1hs\1ht\1hu\1hv\1hw\1hx\1hy\1hz\1ia\1ib\1ic\1id\1ie\1if\1ig\1ih\1ii\1ij\1ik\1il\1im\1in\1io\1ip\1iq\1ir\1is\1it\1iu\1iv\1iw\1ix\1iy\1iz\1ja\1jb\1jc\1jd\1je\1jf\1jg\1jh\1ji\1jj\1jk\1jl\1jm\1jn\1jo\1jp\1jq\1jr\1js\1jt\1ju\1jv\1jw\1jx\1jy\1jz\1ka\1kb\1kc\1kd\1ke\1kf\1kg\1kh\1ki\1kj\1kk\1kl\1km\1kn\1ko\1kp\1kq\1kr\1ks\1kt\1ku\1kv\1kw\1kx\1ky\1kz\1la\1lb\1lc\1ld\1le\1lf\1lg\1lh\1li\1lj\1lk\1ll\1lm\1ln\1lo\1lp\1lq\1lr\1ls\1lt\1lu\1lv\1lw\1lx\1ly\1lz\1ma\1mb\1mc\1md\1me\1mf\1mg\1mh\1mi\1mj\1mk\1ml\1mm\1mn\1mo\1mp\1mq\1mr\1ms\1mt\1mu\1mv\1mw\1mx\1my\1mz\1na\1nb\1nc\1nd\1ne\1nf\1ng\1nh\1ni\1nj\1nk\1nl\1nm\1nn\1no\1np\1nq\1nr\1ns\1nt\1nu\1nv\1nw\1nx\1ny\1nz\1oa\1ob\1oc\1od\1oe\1of\1og\1oh\1oi\1oj\1ok\1ol\1om\1on\1oo\1op\1oq\1or\1os\1ot\1ou\1ov\1ow\1ox\1oy\1oz\1pa\1pb\1pc\1pd\1pe\1pf\1pg\1ph\1pi\1pj\1pk\1pl\1pm\1pn\1po\1pp\1pq\1pr\1ps\1pt\1pu\1pv\1pw\1px\1py\1pz\1qa\1qb\1qc\1qd\1qe\1qf\1qg\1qh\1qi\1qj\1qk\1ql\1qm\1qn\1qo\1qp\1qq\1qr\1qs\1qt\1qu\1qv\1qw\1qx\1qy\1qz\1ra\1rb\1rc\1rd\1re\1rf\1rg\1rh\1ri\1rj\1rk\1rl\1rm\1rn\1ro\1rp\1rq\1rr\1rs\1rt\1ru\1rv\1rw\1rx\1ry\1rz\1sa\1sb\1sc\1sd\1se\1sf\1sg\1sh\1si\1sj\1sk\1sl\1sm\1sn\1so\1sp\1sq\1sr\1ss\1st\1su\1sv\1sw\1sx\1sy\1sz\1ta\1tb\1tc\1td\1te\1tf\1tg\1th\1ti\1tj\1tk\1tl\1tm\1tn\1to\1tp\1tq\1tr\1ts\1tt\1tu\1tv\1tw\1tx\1ty\1tz\1ua\1ub\1uc\1ud\1ue\1uf\1ug\1uh\1ui\1uj\1uk\1ul\1um\1un\1uo\1up\1uq\1ur\1us\1ut\1uu\1uv\1uw\1ux\1uy\1uz\1va\1vb\1vc\1vd\1ve\1vf\1vg\1vh\1vi\1vj\1vk\1vl\1vm\1vn\1vo\1vp\1vq\1vr\1vs\1vt\1vu\1vv\1vw\1vx\1vy\1vz\1wa\1wb\1wc\1wd\1we\1wf\1wg\1wh\1wi\1wj\1wk\1wl\1wm\1wn\1wo\1wp\1wq\1wr\1ws\1wt\1wu\1wv\1ww\1wx\1wy\1wz\1xa\1xb\1xc\1xd\1xe\1xf\1xg\1xh\1xi\1xj\1xk\1xl\1xm\1xn\1xo\1xp\1xq\1xr\1xs\1xt\1xu\1xv\1xw\1xx\1xy\1xz\1ya\1yb\1yc\1yd\1ye\1yf\1yg\1yh\1yi\1yj\1yk\1yl\1ym\1yn\1yo\1yp\1yq\1yr\1ys\1yt\1yu\1yv\1yw\1yx\1yy\1yz\1za\1zb\1zc\1zd\1ze\1zf\1zg\1zh\1zi\1zj\1zk\1zl\1zm\1zn\1zo\1zp\1zq\1zr\1zs\1zt\1zu\1zv\1zw\1zx\1zy\1zz

USER NAME = Bridgette.Pierson	DESIGNED -	REVISED -
	DRAWN -	REVISED -
PLOT SCALE = 0.16666833' / in.	CHECKED -	REVISED -
PLOT DATE = 10/6/2023	DATE -	REVISED -

**STATE OF ILLINOIS
DEPARTMENT OF TRANSPORTATION**

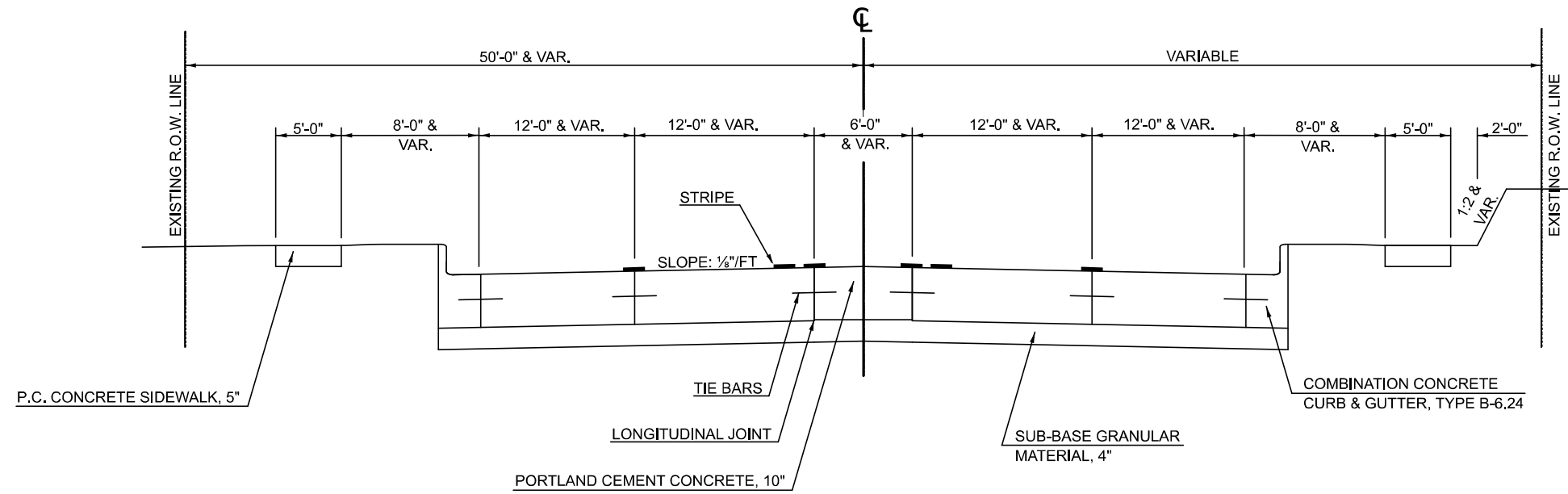
**TYPICAL CROSS SECTION
LOCATION 1**

SCALE: NONE SHEET 1 OF 2 SHEETS STA. TO STA.

F.A.P. RTE.	SECTION	COUNTY	TOTAL SHEETS	SHEET NO.
709	D5 CM PATCHING 2024-3	CHAMPAIGN	12	5
CONTRACT NO. 70G87				
ILLINOIS FED. AID PROJECT				

**EXISTING TYPICAL CROSS SECTION
LOCATION 2**

STATION TO STATION
2290+00.00 2292+56.00



MODEL: Loc 4 (Sheet)
FILE NAME: c:\p\work\p\pierson\brd\0902462\057\0687-Sht-Typicals.dgn

USER NAME = Bridgette.Pierson	DESIGNED -	REVISED -
	DRAWN -	REVISED -
PLOT SCALE = 0.16666633' / in.	CHECKED -	REVISED -
PLOT DATE = 10/6/2023	DATE -	REVISED -

**STATE OF ILLINOIS
DEPARTMENT OF TRANSPORTATION**

**TYPICAL CROSS SECTIONS
LOCATION 2**

SCALE: NONE SHEET 2 OF 2 SHEETS STA. TO STA.

F.A.P. RTE.	SECTION	COUNTY	TOTAL SHEETS	SHEET NO.
709	D5 CM PATCHING 2024-3	CHAMPAIGN	12	6
CONTRACT NO. 70G87				
ILLINOIS FED. AID PROJECT				

SCHEDULE OF QUANTITIES

PATCHING SCHEDULE OF QUANTITIES

LOCATION 1A & 1B - US 136 AT I-57					CLASS A TYPE IV, 10" (SPECIAL)	CLASS B TYPE II, 10"	CLASS B TYPE III, 10"	CLASS B TYPE IV, 10"	DOWEL BARS 1 1/2"	SAW CUTS	TIE BARS 5/8"	PATCH REINFORCEMENT	WELDED WIRE REINFORCEMENT
APPROX STATION	DIRECTION	LANE	LENGTH	WIDTH	(SQ YD)	(SQ YD)	(SQ YD)	(SQ YD)	(FOOT)	(EACH)	(SQ YD)	(SQ. YD.)	
207+35 TO 207+65.25	LT & RT	MEDIAN	30.3	16.3	45.99					85.1	39.0	54.9	
207+65.25 TO 207+98.75	LT & RT	MEDIAN	33.5	16.3	71.94					83.1	30.7	61.0	
221+60 TO 222+00	LT	MEDIAN	40.0	13.7	39.00					97.7	25.3	39.4	
222+00 TO 222+39.25	LT & RT	MEDIAN	39.3	17.3	75.00					102.0	37.7	81.0	
222+39.25 TO 222+72.93	LT & RT	MEDIAN	17.3	20.1	45.00					61.8	40.2	43.6	
LOCATION 2 - US 136 UNDER ICRR													
2290+00 TO 2290+30	LT	OUTSIDE	30.0	14.0				46.7	36.0	88.0	20.0		46.7
2290+65 TO 2291+03	RT	INSIDE	38.0	12.0				50.7	30.0	100.0	25.0		50.7
2290+71 TO 2291+03	RT	OUTSIDE	32.0	12.0				42.7	30.0	88.0	21.0		42.7
2290+90 TO 2290+98	LT	OUTSIDE	8.0	16.5			14.7		29.0	49.0	0.0		
2290+90 TO 2290+98	LT	INSIDE	8.0	16.5			14.7		29.0	41.0	0.0		
2291+60 TO 2291+66	RT	INSIDE	6.0	12.0		8.0			20.0	36.0	0.0		
2291+60 TO 2291+66	RT	OUTSIDE	6.0	12.0		8.0			20.0	30.0	0.0		
2291+70 TO 2292+55	LT	INSIDE	85.0	13.8				130.7	166.0	198.7	0.0		130.6
2291+70 TO 2292+55	LT	OUTSIDE	85.0	13.8				130.7	166.0	198.7	0.0		130.6
2291+90 TO 2292+56	RT	INSIDE	66.0	12.0				88.0	50.0	156.0	44.0		88
2291+90 TO 2292+56	RT	OUTSIDE	66.0	12.0				88.0	50.0	156.0	44.0		88
TOTAL					276.9	16.0	29.4	577.4	626.0	1571.1	326.8	279.9	577.3
USE TOTAL					277.0	16.0	30.0	578.0	626.0	1572.0	327.0	280.0	578.0

MODEL: Schedule of Quantities (Sheet)
FILE NAME: c:\p\work\wip\pierson\090202462\057\0687-Sht-Schedules.dgn

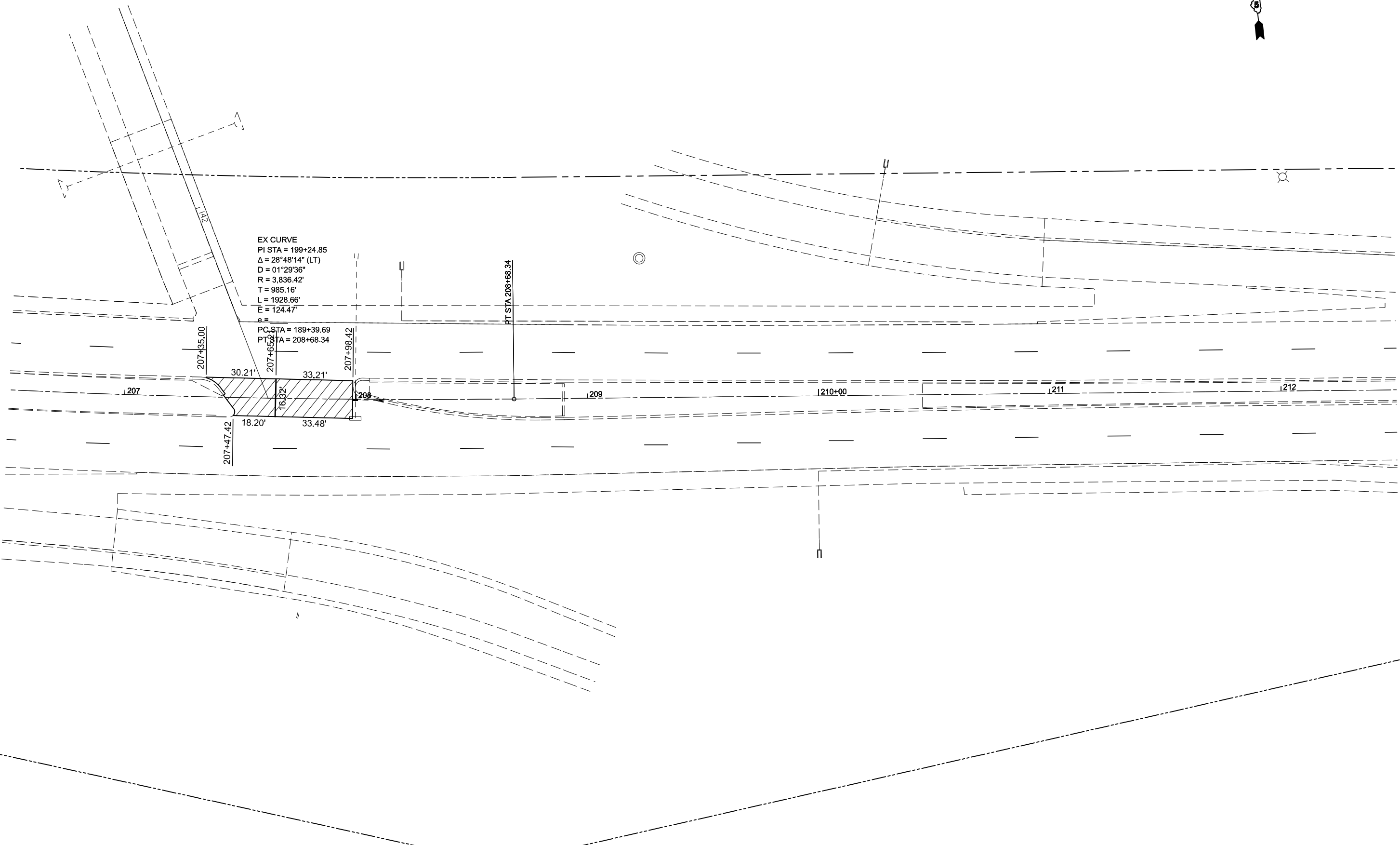
USER NAME = Bridgette.Pierson	DESIGNED -	REVISED -
	DRAWN -	REVISED -
PLOT SCALE = 0.16666833' / in.	CHECKED -	REVISED -
PLOT DATE = 10/5/2023	DATE -	REVISED -

**STATE OF ILLINOIS
DEPARTMENT OF TRANSPORTATION**

SCHEDULE OF QUANTITIES

SCALE: NONE SHEET 1 OF 1 SHEETS STA. TO STA.

F.A.P RTE.	SECTION	COUNTY	TOTAL SHEETS	SHEET NO.
709	D5 CM PATCHING 2024-3	CHAMPAIGN	12	7
CONTRACT NO. 70G87				
ILLINOIS FED. AID PROJECT				



EX CURVE
 PI STA = 199+24.85
 $\Delta = 28^{\circ}48'14''$ (LT)
 $D = 01^{\circ}29'36''$
 $R = 3,836.42'$
 $T = 985.16'$
 $L = 1928.66'$
 $E = 124.47'$

PC STA = 189+39.69
 PT STA = 208+68.34

MODEL: \\MODELS\MEE
 FILE NAME: \\projects\champaign\DOT\Office\District 5\ORD Project\DOT\SET\CADD\Drawings\DOT\Sheet\207.dwg

USER NAME = Biddette, Pierson	DESIGNED -	REVISED -
PLOT SCALE = 0.16666633' / in.	DRAWN -	REVISED -
PLOT DATE = 10/6/2023	CHECKED -	REVISED -
	DATE -	REVISED -

**STATE OF ILLINOIS
 DEPARTMENT OF TRANSPORTATION**

**PLAN SHEET
 LOCATION 1, SHEET 1**

SCALE: 1"=20' SHEET 1 OF 3 SHEETS STA. TO STA.

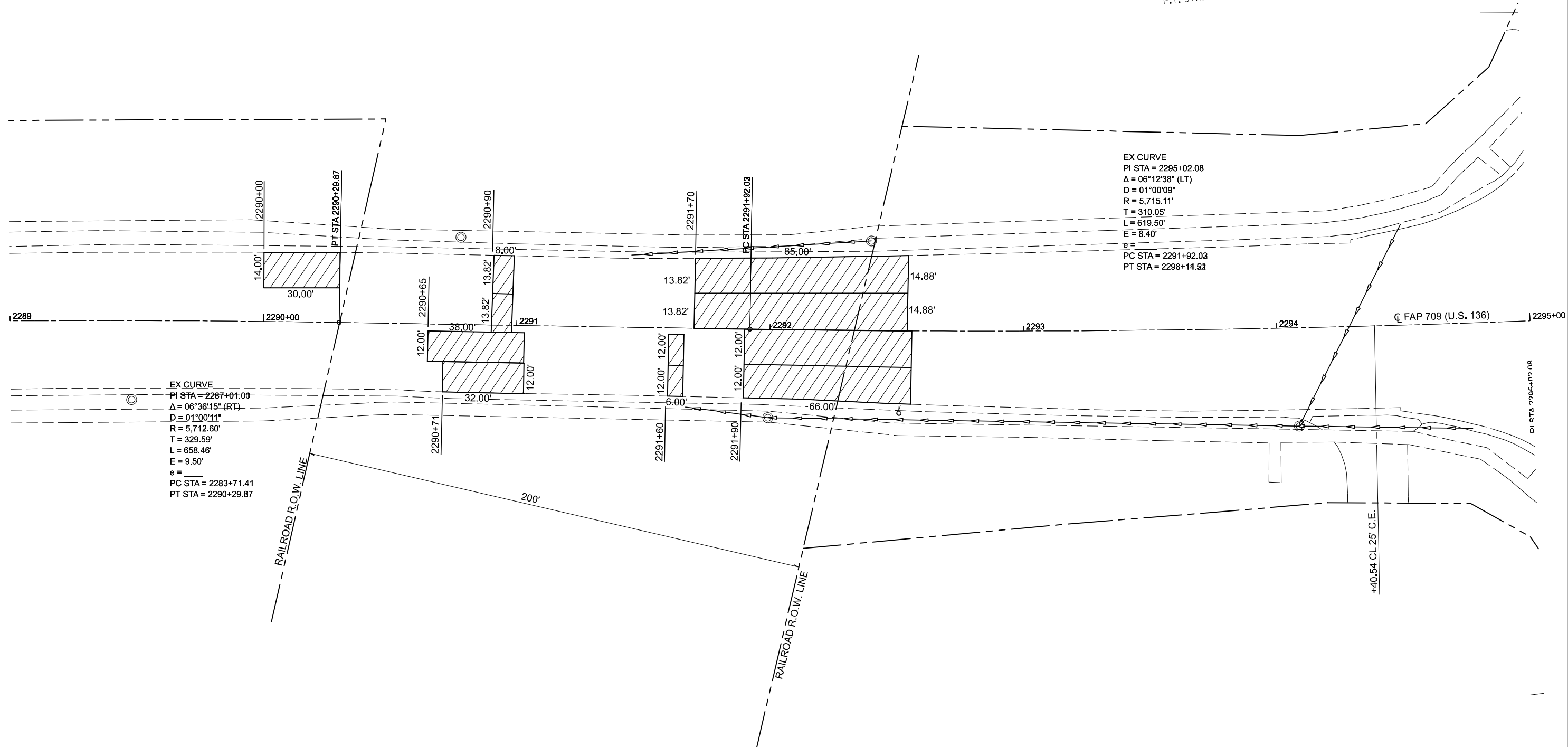
F.A.P. RTE. 709	SECTION D5 CM PATCHING 2024-3	COUNTY CHAMPAIGN	TOTAL SHEETS 12	SHEET NO. 8
CONTRACT NO. 70G87				ILLINOIS FED. AID PROJECT



EXIST. CURVE DATA
 P.I. STA. = 2295+02.08
 $I = 6^\circ 12' 38''$ (LT)
 $D = 1^\circ 00' 09''$
 $R = 5,715.11'$
 $T = 310.05'$
 $L = 619.49'$
 $E = 8.40'$
 P.C. STA. = 2291+92.03
 P.T. STA. = 2298+11.50

EX CURVE
 P.I. STA = 2295+02.08
 $\Delta = 06^\circ 12' 38''$ (LT)
 $D = 01^\circ 00' 09''$
 $R = 5,715.11'$
 $T = 310.05'$
 $L = 619.50'$
 $E = 8.40'$
 $e =$
 PC STA = 2291+92.03
 PT STA = 2298+14.82

EX CURVE
 P.I. STA = 2287+01.00
 $\Delta = 06^\circ 36' 15''$ (RT)
 $D = 01^\circ 00' 11''$
 $R = 5,712.60'$
 $T = 329.59'$
 $L = 658.46'$
 $E = 9.50'$
 $e =$
 PC STA = 2283+71.41
 PT STA = 2290+29.87



MODEL: \\MODELNAME
 FILE NAME: \\PROJECTNAME\PROJECT\CADD\Drawings\709\709-314-20.dwg

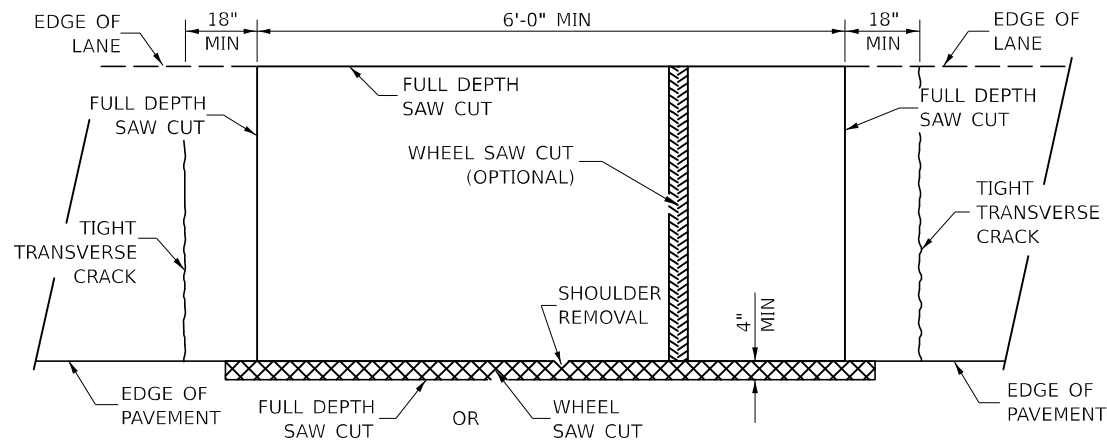
USER NAME = Bldgetts,Person	DESIGNED -	REVISED -
PLOT SCALE = 0.16666633 / in.	DRAWN -	REVISED -
PLOT DATE = 10/6/2023	CHECKED -	REVISED -
	DATE -	REVISED -

**STATE OF ILLINOIS
 DEPARTMENT OF TRANSPORTATION**

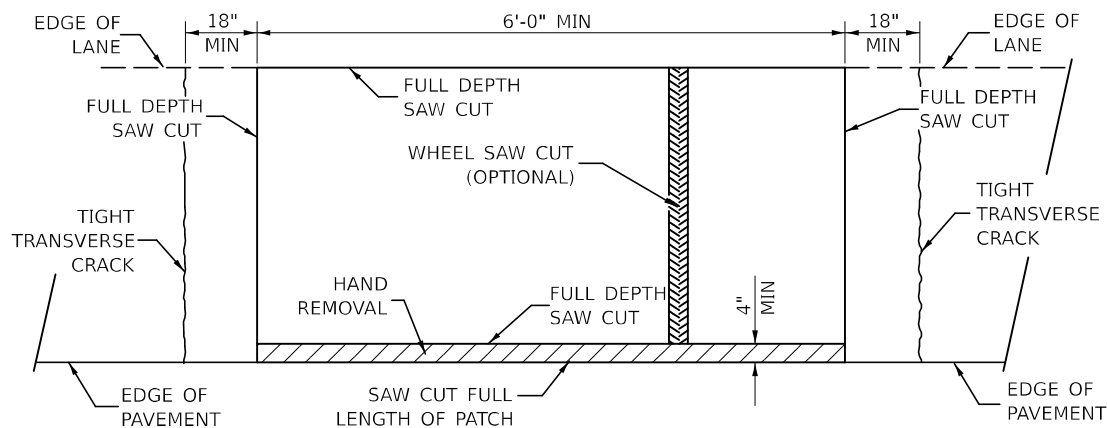
**PLAN SHEET
 LOCATION 2**

SCALE: 1"=20' SHEET 3 OF 3 SHEETS STA. TO STA.

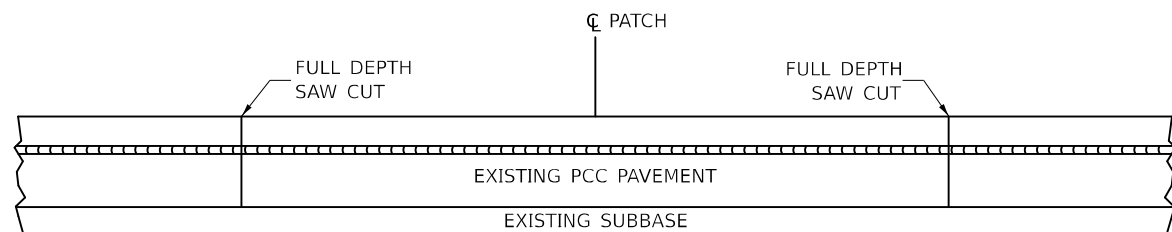
F.A.P. RTE.	SECTION	COUNTY	TOTAL SHEETS	SHEET NO.
709	D5 CM PATCHING 2024-3	CHAMPAIGN	12	10
CONTRACT NO. 70G87				
ILLINOIS FED. AID PROJECT				



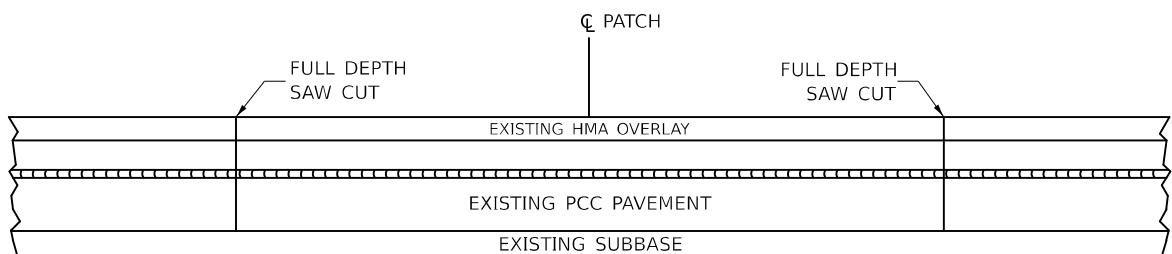
**PAVEMENT SAWING DETAIL
(HMA SHOULDER)**



**PAVEMENT SAWING DETAIL
(PCC SHOULDER)**

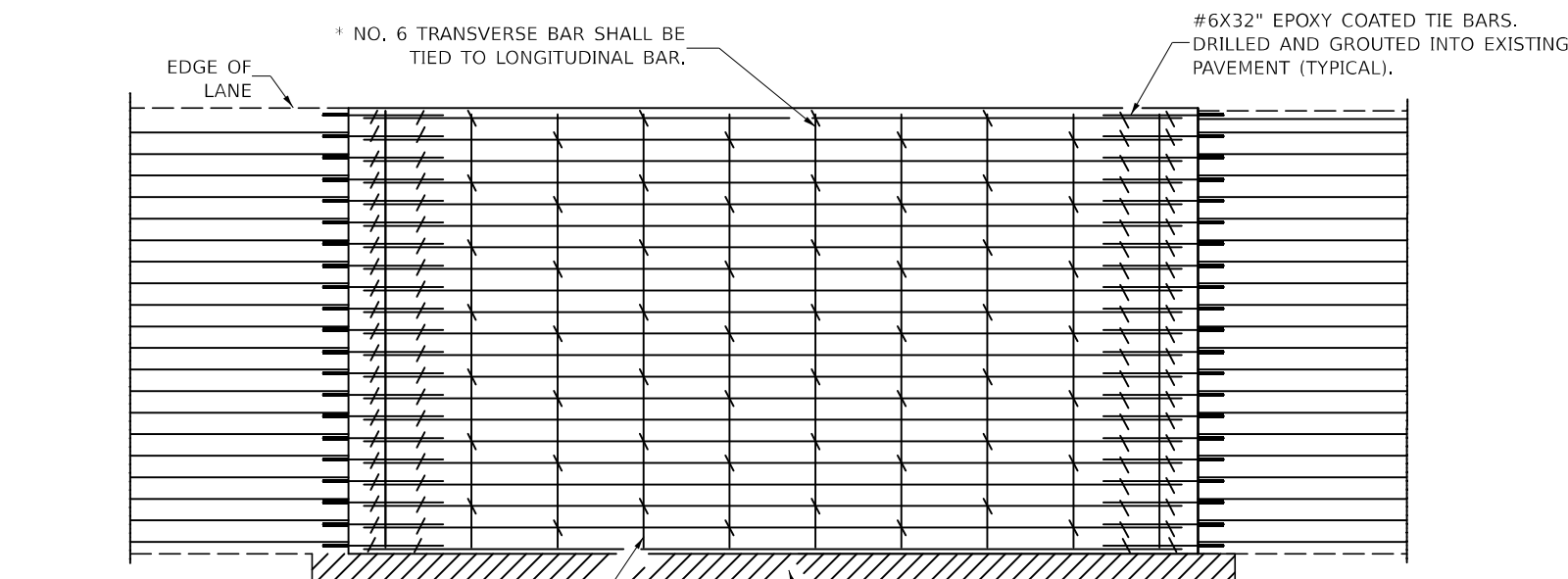


EXISTING PAVEMENT WITHOUT HMA SURFACE

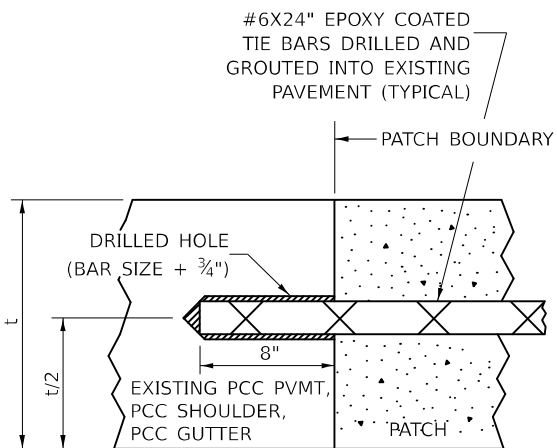


EXISTING PAVEMENT WITH HMA SURFACE

**PAVEMENT SAWING DETAIL FOR CLASS A PATCHING
(CRC PAVEMENT)**



PAVEMENT REINFORCEMENT DETAIL



LONGITUDINAL CONSTRUCTION JOINT

PATCHES MORE THAN 20' IN LENGTH SHALL BE TIED TO ADJACENT PAVEMENT, PCC SHOULDERS OR PCC CURB AND GUTTER WITH #6x24" EPOXY COATED TIE BARS AT 24" CENTERS.

NOTES:

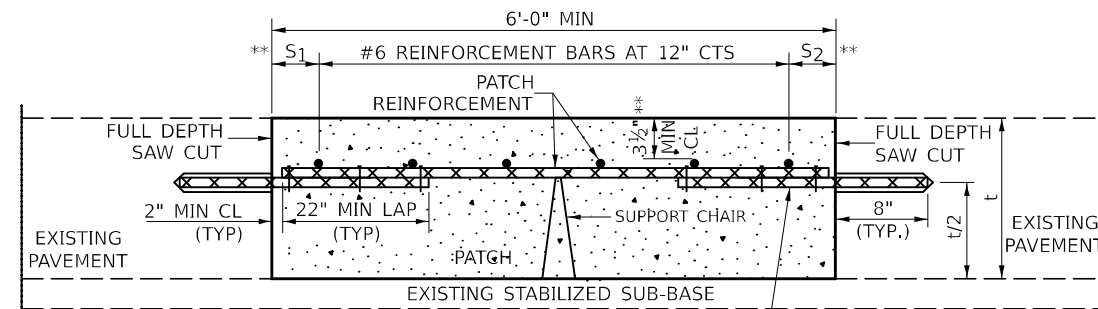
EXISTING LONGITUDINAL REINFORCEMENT SPACING; $\pm 6\frac{1}{2}$ ".

SPACING OF NEW LONGITUDINAL REINFORCEMENT AND NEW LONGITUDINAL TIE BARS SHALL MATCH SPACING OF EXISTING REINFORCEMENT AND SHALL BE TIED TOGETHER WITH A MINIMUM OF TWO TIES PER BAR.

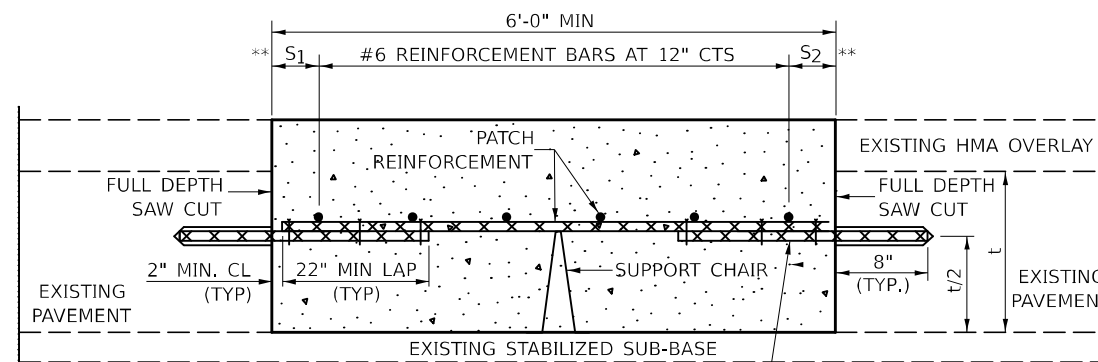
SUPPORT CHAIRS SHALL BE REQUIRED WHENEVER PATCH LENGTH EXCEEDS 6'-0"

* EVERY THIRD INTERSECTION MUST BE TIED. WHEN THE MINIMUM CLEARANCE CANNOT BE OBTAINED WITH THE TRANSVERSE REBAR ON TOP, THEN THE TRANSVERSE REBAR SHALL BE TIED TO THE BOTTOM OF THE LONGITUDINAL REBAR.

** VARIABLES WHERE S AND S ARE 2½" MIN. AND 12" MAX.



WITHOUT HMA OVERLAY



WITH HMA OVERLAY

**PATCHING DETAIL FOR CLASS A PATCHING
(CRC PAVEMENT)**

Note: All dimensions are in INCHES (millimeters) unless otherwise shown.

MODEL: R:\MODEL\NAMES FILE NAME: P:\Bids\pcc\sho\sho.dwg PROJECT: DISTRICT 5 CORP. PROJECT: DISTRICT 5 CORP. CADD: DATE: 05/07/2024 09:07:58 AM SHEET: 44200AAA.dwg

USER NAME = Bldgette,Plerson	DESIGNED - JWS	REVISED -
DRAWN -	REVISOR -	
PLOT SCALE = 0.16666633' / in.	CHECKED -	REVISOR -
PLOT DATE = 10/6/2023	DATE - 01/2021	REVISOR -

**STATE OF ILLINOIS
DEPARTMENT OF TRANSPORTATION**

CLASS A PATCHING (SPECIAL)

SCALE: NONE SHEET 1 OF 2 SHEETS STA. TO STA.

DISTRICT 5 DETAIL NO. 44200AAA				
F.A.P. RTE.	SECTION	COUNTY	TOTAL SHEETS	SHEET NO.
709	D5 CM PATCHING 2024-3	CHAMPAIGN	12	11
CONTRACT NO. 70G87				
ILLINOIS FED. AID PROJECT				

