

01-19-2024 LETTING ITEM 052

STATE OF ILLINOIS
DEPARTMENT OF TRANSPORTATION

FAU RTE.	SECTION	COUNTY	TOTAL SHEETS	SHEET NO.
3752	22-00056-00 RS	WILL	22	1
FED. ROAD DIST. NO. 1 ILLINOIS		FED. AID PROJECT AH7P(516)		

CONTRACT NO. 61J97

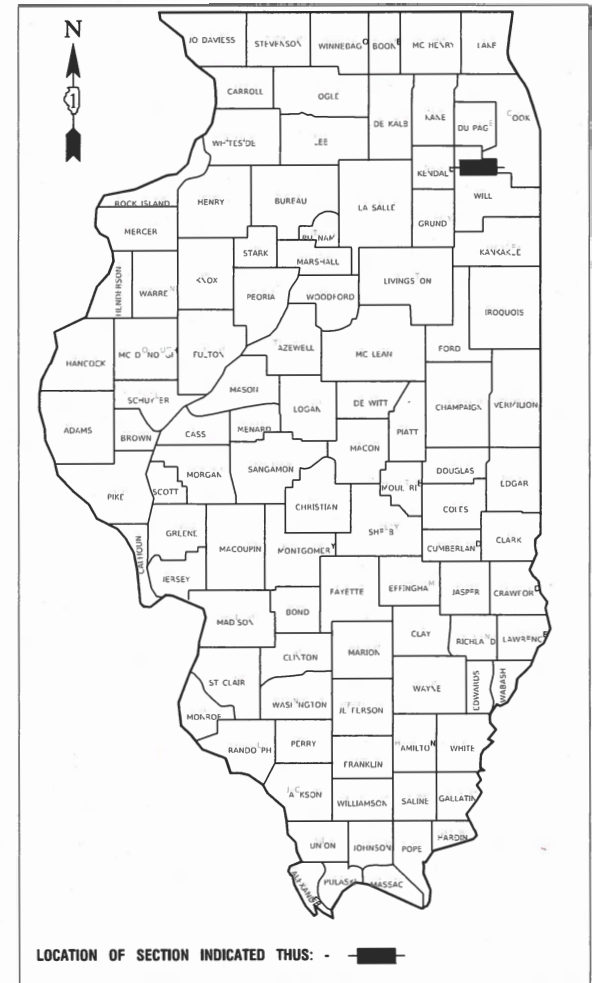
PLANS FOR PROPOSED FEDERAL AID HIGHWAY

FAU ROUTE 3752 (ST FRANCIS ROAD)
LA GRANGE ROAD TO 88TH AVENUE
ROADWAY RESURFACING
SECTION NO.: 22-00056-00 RS
PROJECT NO.: AH7P(516)
VILLAGE of FRANKFORT
WILL COUNTY
JOB NO.: C-91-192-23

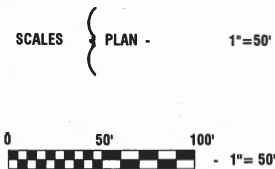
FOR INDEX OF SHEETS, SEE SHEET NO. 2

FOR HIGHWAY STANDARDS, SEE SHEET NO. 2

ST FRANCIS ROAD	
LA GRANGE ROAD TO 88TH AVENUE	
2019 ADT-	10,050
POSTED SPEED LIMIT-	45 MPH
FUNCTIONAL CLASSIFICATION-	MAJOR COLLECTOR

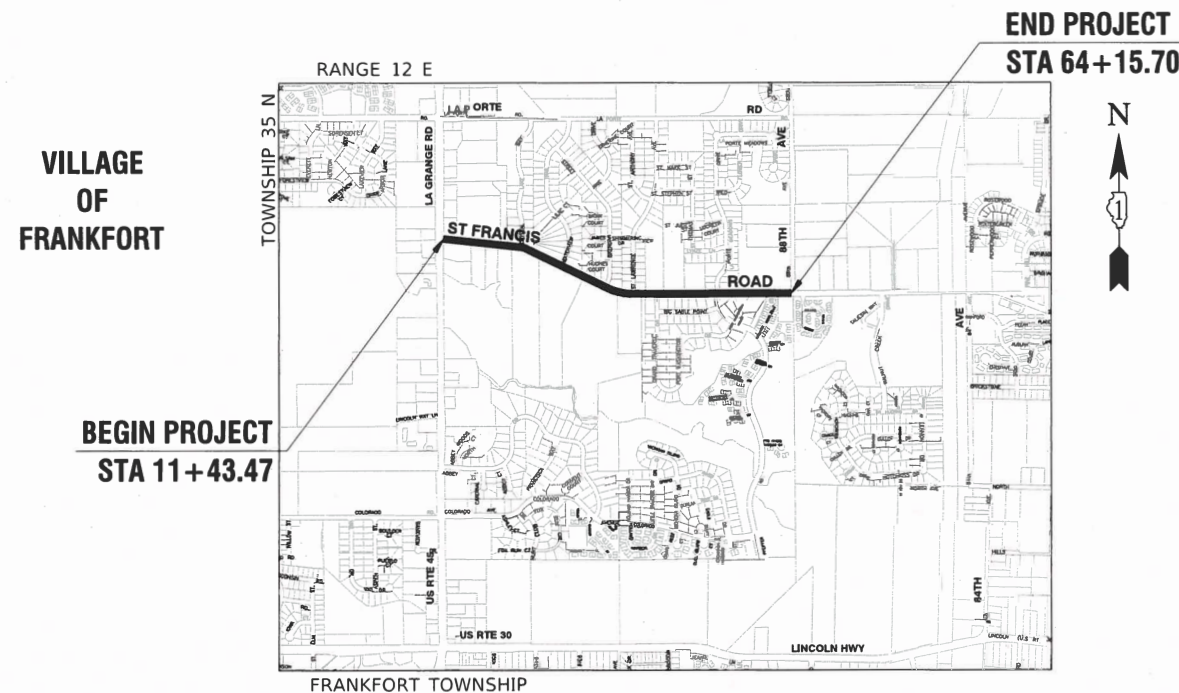


FEDERAL AID PROGRAM ENGINEER: CARMEN RAMOS, PE, SCHAUMBURG, IL
CONSULTANTS: ROBINSON ENGINEERING, LTD. 708-331-6700



FULL SIZE PLANS HAVE BEEN PREPARED USING STANDARD ENGINEERING SCALES, REDUCED SIZED PLANS WILL NOT CONFORM TO STANDARD SCALES, IN MAKING MEASUREMENTS ON REDUCED PLANS, THE ABOVE SCALES MAY BE USED.

J. U. L. I. E.
JOINT UTILITY LOCATION INFORMATION FOR EXCAVATION
1 - 800 - 892 - 0123
OR 811



LOCATION MAP
NOT TO SCALE

GROSS AND NET LENGTH= 5,272.33 FEET= 1.00 MILES



USE ME EXPIRES: 11/30/23
Troy A. Golew

10-27-23

STATE OF ILLINOIS DEPARTMENT OF TRANSPORTATION

APPROVED 9/25/23
[Signature]
VILLAGE OF FRANKFORT, MAYOR

PASSED NOVEMBER 6, 2023
[Signature]
DISTRICT 1 ENGINEER OF LOCAL ROADS & STREETS

RELEASING FOR BID BASED ON LIMITED REVIEW NOVEMBER 6, 2023
[Signature]
REGIONAL ENGINEER

PRINTED BY THE AUTHORITY OF
THE STATE OF ILLINOIS

CONTRACT NO. 61J97

INDEX OF SHEETS

1	COVER SHEET
2	INDEX OF SHEETS, HIGHWAY STANDARDS AND GENERAL NOTES
3-5	SUMMARY OF QUANTITIES
6	TYPICAL CROSS SECTIONS
7-8	ALIGNMENT, TIES AND BENCHMARKS
9-11	PROPOSED IMPROVEMENT PLAN
12-14	PAVEMENT MARKING PLAN
15-22	IDOT DISTRICT 1 STANDARDS

HIGHWAY STANDARDS

000001-08	STANDARD SYMBOLS, ABBREVIATIONS AND PATTERNS
424001-11	PERPENDICULAR CURB RAMPS FOR SIDEWALKS
424011-04	CORNER PARALLEL CURB RAMPS FOR SIDEWALKS
442201-03	CLASS C AND D PATCHES
606001-08	CONCRETE CURB TYPE B AND COMBINATION CONCRETE CURB AND GUTTER
701101-05	OFF-ROAD OPERATIONS, MULTILANE, 15' (4.5 M) TO 24" (600 MM) FROM PAVEMENT EDGE
701106-02	OFF-ROAD OPERATIONS, MULTILANE, MORE THAN 15' (4.5 M) AWAY
701421-08	LANE CLOSURE, MULTILANE, DAY OPERATIONS ONLY, FOR SPEEDS > 45 MPH TO 55 MPH
701426-09	LANE CLOSURE, MULTILANE, INTERMITTENT OR MOVING OPERATION, FOR SPEEDS > 45 MPH
701606-10	URBAN SINGLE LANE CLOSURE, MULTILANE, 2W WITH MOUNTABLE MEDIAN
701801-06	SIDEWALK, CORNER OR CROSSWALK CLOSURE
701901-09	TRAFFIC CONTROL DEVICES
720001-01	SIGN PANEL MOUNTING DETAILS
720006-04	SIGN PANEL ERECTION DETAILS
728001-01	TELESCOPING STEEL SIGN SUPPORT
780001-05	TYPICAL PAVEMENT MARKINGS

DISTRICT ONE DETAILS

BD-08	DETAILS FOR FRAMES AND LIDS ADJUSTMENT WITH MILLING
BD-22	PAVEMENT PATCHING FOR HMA SURFACED PAVEMENT
BD-32	BUTT JOINTS AND HMA TAPER
TC-10	TRAFFIC CONTROL AND PROTECTION FOR SIDE ROADS, INTERSECTIONS AND DRIVEWAYS
TC-13	DISTRICT ONE TYPICAL PAVEMENT MARKINGS
TC-16	SHORT TERM PAVEMENT MARKING LETTERS AND SYMBOLS
TC-22	ARTERIAL ROAD INFORMATION SIGN
TC-26	DRIVEWAY ENTRANCE SIGNING

GENERAL NOTES

- ITEMS OF WORK LISTED IN THE SUMMARY OF QUANTITIES NOT SPECIFICALLY CALLED OUT ON THE PLANS SHALL BE PERFORMED AS DIRECTED BY THE ENGINEER.
- THE ROBINSON ENGINEERING, LTD. FIELD OFFICE (708-331-6700), AND THE PUBLIC WORKS DIRECTOR, AT THE VILLAGE OF FRANKFORT (815-412-2433), SHALL BE NOTIFIED THREE (3) WORKING DAYS BEFORE CONSTRUCTION BEGINS.
- BEFORE STARTING ANY EXCAVATION THE CONTRACTOR SHALL CALL "J.U.L.I.E." AT (800) 892-0123 OR 811 AND (312) 744-7000 FOR FIELD LOCATIONS OF BURIED ELECTRIC, TELEPHONE AND GAS UTILITIES. (48 HOUR NOTIFICATION REQUIRED)
- UTILITIES INDICATED ON THE PLANS ARE PROVIDED FOR THE CONTRACTOR'S USE AND ARE BASED UPON INFORMATION AVAILABLE AT THE TIME OF THE ADVERTISEMENT FOR BIDS. THE OWNER AND ENGINEER DO NOT GUARANTEE THE ACCURACY OF UTILITY INFORMATION.
- IT SHALL BE THE CONTRACTOR'S RESPONSIBILITY TO VERIFY ALL DIMENSIONS AND CONDITIONS EXISTING IN THE FIELD PRIOR TO CONSTRUCTION AND ORDERING OF MATERIALS.
- THE THICKNESS OF HMA MIXTURE STATED IN THE SPECIFICATIONS IS THE NOMINAL THICKNESS. DEVIATIONS FROM THE NOMINAL THICKNESS WILL BE PERMITTED WHEN SUCH DEVIATIONS OCCUR DUE TO IRREGULARITIES IN THE EXISTING SURFACE OR BASE ON WHICH THE HMA SURFACE IS PLACED.
- ANY LOOSE MATERIAL DEPOSITED IN THE FLOW LINE OF DITCHES, GUTTERS OR OTHER DRAINAGE STRUCTURES SHALL BE REMOVED BY THE END OF EACH DAY BY THE CONTRACTOR.
- CLASS D PATCHING QUANTITIES FOR THIS CONTRACT SHALL BE PERFORMED AT THE DIRECTION OF THE ENGINEER AFTER PAVEMENT MILLING.
- CONTRACTOR SHALL TAKE PRECAUTION BY PRESERVING EXISTING TREES WITHIN THE RIGHT OF WAY. IF ANY DAMAGE OCCURS, TREES SHALL BE REPLACED IN KIND PER ARTICLE 201.07 REPAIR OR REPLACEMENT OF EXISTING PLANT MATERIAL REQUIREMENTS STATED HEREIN.
- NO PAVEMENT PATCHING SHALL BE PERMITTED AFTER FRIDAY AT 3:00 PM OF EACH AND EVERY WEEK AND NO HOLES WILL BE ALLOWED TO REMAIN OPEN OVERNIGHT OR OVER THE WEEKEND.
- ALL EQUIPMENT SHALL BE REMOVED OFF THE VILLAGE STREETS DURING ALL HOLIDAY WEEKENDS AS COORDINATED WITH THE VILLAGE.
- HMA PAVING SHALL BE PERFORMED WITH HOT JOINTS.
- THE CONTRACTOR SHALL CONTACT KALPANA KANNAN-HOSADURGA, THE DISTRICT ONE TRAFFIC CONTROL SUPERVISOR, AT KALPANA.KANNAN-HOSADURGA@ILLINOIS.GOV A MINIMUM OF 72 HOURS IN ADVANCE OF BEGINNING WORK.
- ENBRIDGE WILL REQUIRE A "NO STOPPING NO VIBE ZONE" (VIBRATORY FUNCTION TURNED OFF) WITHIN 20 FEET OF THE PIPELINE WHICH IS LOCATED AT APPROXIMATE STATION 50+45. ANY CURB AND GUTTER REMOVAL OVER THE PIPELINE SHALL BE UNDER THE ENBRIDGE FIELD REPRESENTATIVE'S SUPERVISION. A ONE CALL TICKET SHOULD BE PLACED PRIOR TO THE WORK STARTING SO THE ENBRIDGE FIELD REPRESENTATIVE CAN BE PRESENT. JOE ALLISON, ENBRIDGE FIELD REPRESENTATIVE, SHOULD BE CONTACTED AT 219-218-8662.
- PHOSPHORUS FERTILIZER HAS BEEN INTENTIONALLY OMITTED FROM THE CONTRACT DUE TO THE PROXIMITY OF THE EXISTING WETLANDS/BODIES OF WATER. A PHOSPHORUS-FREE FERTILIZER SHALL BE USED (MIDDLE NUMBER SHOULD EQUAL 0).

FILE NAME = 20R0277_01-INDX-01 - P01	USER NAME =	DESIGNED -- ----	REVISED --	STATE OF ILLINOIS DEPARTMENT OF TRANSPORTATION	ST FRANCIS ROAD ROADWAY RESURFACING INDEX OF SHEETS, STANDARDS & GENERAL NOTES			F.A.U. RTE.	SECTION	COUNTY	TOTAL SHEETS	SHEET NO.
		CHECKED -- WPD	REVISED --					3752	22-00056-00 RS	WILL	22	2
	PLOT SCALE =	DRAWN -- RG	REVISED --					CONTRACT NO. 61J97				
	PLOT DATE = 10-27-23	CHECKED -- AG	REVISED --					SCALE: NONE	SHEET NO. 2 OF 22 SHEETS	STA. TO STA.	FED. ROAD DIST. NO. 1	ILLINOIS

CODE NO.	PAY ITEM	UNIT	TOTAL QUANTITY	FED 80%	FED 80%
				VILLAGE 20%	VILLAGE 20%
				ROADWAY	SAFETY
				CONSTRUCTION TYPE CODE	
				0005	0021
21101615	TOPSOIL FURNISH AND PLACE, 4"	SQ YD	655	655	
25000400	NITROGEN FERTILIZER NUTRIENT	POUND	9	9	
25000600	POTASSIUM FERTILIZER NUTRIENT	POUND	9	9	
25200110	SODDING, SALT TOLERANT	SQ YD	655	655	
25200200	SUPPLEMENTAL WATERING	UNIT	18	18	
28000510	INLET FILTERS	EACH	43	43	
35101600	AGGREGATE BASE COURSE, TYPE B 4"	SQ YD	665		665
35800100	PREPARATION OF BASE	SQ YD	300	300	
35800200	AGGREGATE BASE REPAIR	TON	60	60	
40201000	AGGREGATE FOR TEMPORARY ACCESS	TON	100	100	
40600290	BITUMINOUS MATERIALS (TACK COAT)	POUND	20270	20270	
40600370	LONGITUDINAL JOINT SEALANT	FOOT	16065	16065	
40600400	MIXTURE FOR CRACKS, JOINTS, AND FLANGEWAYS	TON	20	20	
40600982	HOT-MIX ASPHALT SURFACE REMOVAL - BUTT JOINT	SQ YD	175	175	
40603200	POLYMERIZED HOT-MIX ASPHALT BINDER COURSE, IL-4.75, N50	TON	1300	1300	
40604062	HOT-MIX ASPHALT SURFACE COURSE, IL-9.5, MIX "D", N70	TON	2600	2600	

* SPECIALTY ITEMS

FILE NAME = 23R0277_01-QUAN-01 - P01	USER NAME =	DESIGNED --	REVISED --	STATE OF ILLINOIS DEPARTMENT OF TRANSPORTATION	ST FRANCIS ROAD ROADWAY RESURFACING SUMMARY OF QUANTITIES		FAU RTE.	SECTION	COUNTY	TOTAL SHEETS	SHEET NO.	
	PLOT SCALE =	CHECKED -- WPD	REVISED --		SCALE: NONE	SHEET NO. 3	OF 22 SHEETS	3752	22-00056-00 RS	WILL	22	3
	PLOT DATE = 10-27-23	DRAWN -- BG	REVISED --		STA.	TO STA.	CONTRACT NO. 61J97					
		CHECKED -- AG	REVISED --		FED. ROAD DIST. NO. 1		ILLINOIS	FED. AID PROJECT AH7P(516)				

CODE NO.	PAY ITEM	UNIT	TOTAL QUANTITY	FED 80%	FED 80%
				VILLAGE 20%	VILLAGE 20%
				ROADWAY	SAFETY
CONSTRUCTION TYPE CODE					
				0005	0021
42400200	PORTLAND CEMENT CONCRETE SIDEWALK 5 INCH	SQ FT	5970		5970
42400800	DETECTABLE WARNINGS	SQ FT	315		315
44000157	HOT-MIX ASPHALT SURFACE REMOVAL, 2"	SQ YD	30025	30025	
44000200	DRIVEWAY PAVEMENT REMOVAL	SQ YD	615	615	
44000500	COMBINATION CURB AND GUTTER REMOVAL	FOOT	2650	2650	
44000600	SIDEWALK REMOVAL	SQ FT	5970		5970
44201761	CLASS D PATCHES, TYPE I, 10 INCH	SQ YD	15	15	
44201765	CLASS D PATCHES, TYPE II, 10 INCH	SQ YD	80	80	
44201769	CLASS D PATCHES, TYPE III, 10 INCH	SQ YD	15	15	
44201771	CLASS D PATCHES, TYPE IV, 10 INCH	SQ YD	300	300	
60406100	FRAMES AND LIDS, TYPE 1, CLOSED LID	EACH	1	1	
60605000	COMBINATION CONCRETE CURB AND GUTTER, TYPE B-6.24	FOOT	2650	2650	
67100100	MOBILIZATION	L SUM	1	1	
70100310	TRAFFIC CONTROL AND PROTECTION, STANDARD 701421	L SUM	1	1	
70102625	TRAFFIC CONTROL AND PROTECTION, STANDARD 701606	LSUM	1	1	
70102640	TRAFFIC CONTROL AND PROTECTION, STANDARD 701801	L SUM	1	1	

* SPECIALTY ITEMS

FILE NAME = 23R0277_01-QUAN-01 - P02

USER NAME =	DESIGNED --	---	REVISED --
	CHECKED --	WPD	REVISED --
PLOT SCALE =	DRAWN --	BG	REVISED --
PLOT DATE =	CHECKED --	AG	REVISED --

STATE OF ILLINOIS
DEPARTMENT OF TRANSPORTATION

ST FRANCIS ROAD
ROADWAY RESURFACING
SUMMARY OF QUANTITIES

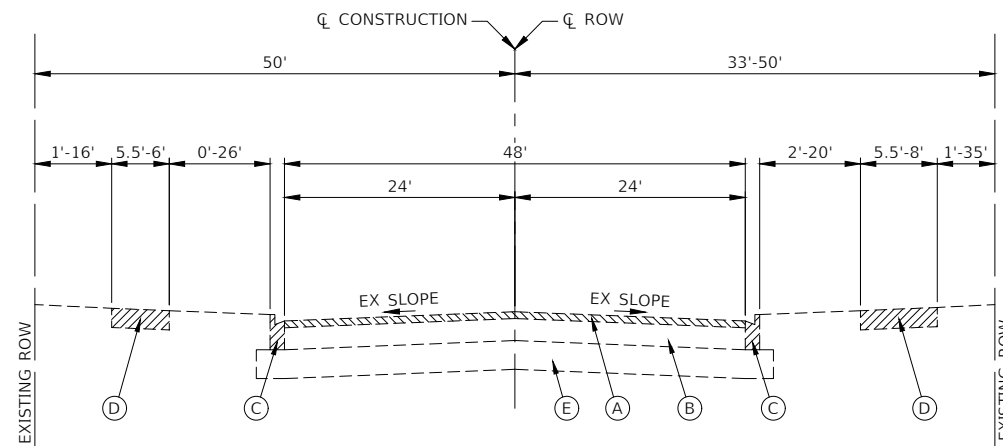
SCALE: NONE SHEET NO. 4 OF 22 SHEETS STA. TO STA.

F.A.U. RTE.	SECTION	COUNTY	TOTAL SHEETS	SHEET NO.
3752	22-00056-00 RS	WILL	22	4
FED. ROAD DIST. NO. 1 ILLINOIS			CONTRACT NO. 61J97	
FED. AID PROJECT AH7P(516)				

CODE NO.	PAY ITEM	UNIT	TOTAL QUANTITY	FED 80%	FED 80%
				VILLAGE 20%	VILLAGE 20%
				ROADWAY	SAFETY
CONSTRUCTION TYPE CODE					
				0005	0021
* 72000100	SIGN PANEL - TYPE 1	SQ FT	6		6
* 72800100	TELESCOPING STEEL SIGN SUPPORT	FOOT	16		16
70300100	SHORT TERM PAVEMENT MARKING	FOOT	1465		1465
70300150	SHORT TERM PAVEMENT MARKING REMOVAL	SQ FT	490		490
* 78000100	THERMOPLASTIC PAVEMENT MARKING - LETTERS AND SYMBOLS	SQ FT	250		250
* 78000200	THERMOPLASTIC PAVEMENT MARKING - LINE 4"	FOOT	11260		11260
* 78000400	THERMOPLASTIC PAVEMENT MARKING - LINE 6"	FOOT	1300		1300
* 78000500	THERMOPLASTIC PAVEMENT MARKING - LINE 8"	FOOT	40		40
* 78000600	THERMOPLASTIC PAVEMENT MARKING - LINE 12"	FOOT	50		50
* 78000650	THERMOPLASTIC PAVEMENT MARKING - LINE 24"	FOOT	130		130
X6030310	FRAMES AND LIDS TO BE ADJUSTED (SPECIAL)	EACH	1	1	
Z0004514	HOT-MIX ASPHALT DRIVEWAY PAVEMENT, 4"	SQ YD	615	615	
Z0017400	DRAINAGE & UTILITY STRUCTURES TO BE ADJUSTED	EACH	47	47	
Z0017700	DRAINAGE & UTILITY STRUCTURES TO BE RECONSTRUCTED	EACH	2	2	
Z0030850	TEMPORARY INFORMATION SIGNING	SQ FT	100		100

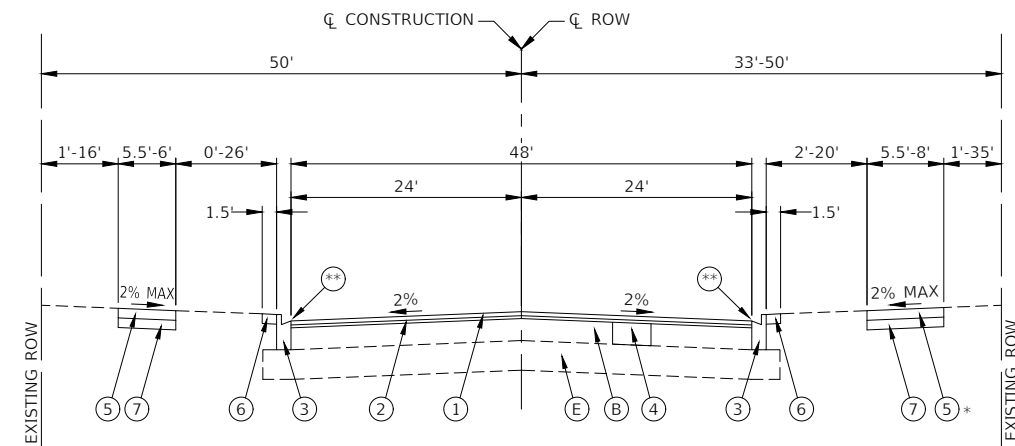
* SPECIALTY ITEMS

FILE NAME = 23R277_01-QUAN-01 - P03	USER NAME =	DESIGNED --	REVISED --	STATE OF ILLINOIS DEPARTMENT OF TRANSPORTATION	ST FRANCIS ROAD ROADWAY RESURFACING SUMMARY OF QUANTITIES			F.A.U. RTE.	SECTION	COUNTY	TOTAL SHEETS	SHEET NO.		
	PLOT SCALE =	CHECKED -- WPD	REVISED --		SCALE: NONE	SHEET NO. 5	OF 22 SHEETS	STA.	TO STA.	3752	22-00056-00 RS	WILL	22	5
	PLOT DATE = 10-27-23	DRAWN -- BG	REVISED --		CONTRACT NO. 61J97									
		CHECKED -- AG	REVISED --		FED. ROAD DIST. NO. 1 ILLINOIS FED. AID PROJECT AH7P(516)									



EXISTING TYPICAL SECTION

ST. FRANCIS ROAD
STA 11+43.47 TO STA 64+15.70



PROPOSED TYPICAL SECTION

ST. FRANCIS ROAD
STA 11+43.47 TO STA 64+15.70

- * THERE IS NO SIDEWALK FOR AN 840' STRETCH
- ** FINISHED PAVEMENT SURFACE SHALL BE 1/4" ABOVE TOP OF GUTTER

EXISTING LEGEND

- (A) HOT-MIX ASPHALT SURFACE REMOVAL, 2"
- (B) EXISTING HOT-MIX ASPHALT PAVEMENT (12"-14")
- (C) EXISTING CURB AND GUTTER REMOVAL AT LOCATIONS AS SHOWN ON PLANS OR DIRECTED BY THE ENGINEER.
- (D) EXISTING PORTLAND CEMENT CONCRETE SIDEWALK REMOVAL AT LOCATIONS AS SHOWN ON PLANS OR DIRECTED BY THE ENGINEER.
- (E) EXISTING SUB-BASE (3"-12")

ITEMS TO BE REMOVED (AS DIRECTED BY ENGINEER)

ITEMS TO BE REMOVED (PER PLAN)

PROPOSED LEGEND

- (1) HOT MIX ASPHALT SURFACE COURSE, IL-9.5, MIX "D", N70, 1 1/2"
- (2) POLYMERIZED HOT-MIX ASPHALT BINDER COURSE, IL-4.75, N50, 3/4"
- (3) COMBINATION CONCRETE CURB AND GUTTER, TYPE B-6.24 AT LOCATIONS AS SHOWN ON PLANS OR DIRECTED BY THE ENGINEER
- (4) CLASS D PATCHES, 10", PREPARATION OF BASE, AGGREGATE BASE REPAIR AT LOCATIONS SHOWN ON THE PLANS OR AS DIRECTED BY THE ENGINEER
- (5) PORTLAND CEMENT CONCRETE SIDEWALK, 5" OR 7" AT LOCATIONS AS SHOWN ON PLANS OR DIRECTED BY THE ENGINEER
- (6) TOPSOIL FURNISH AND PLACE, 4" AND SODDING, SALT TOLERANT AS INDICATED ON THE PLANS OR AS DIRECTED BY THE ENGINEER
- (7) AGGREGATE BASE COURSE, TYPE B, 4"

NOTE

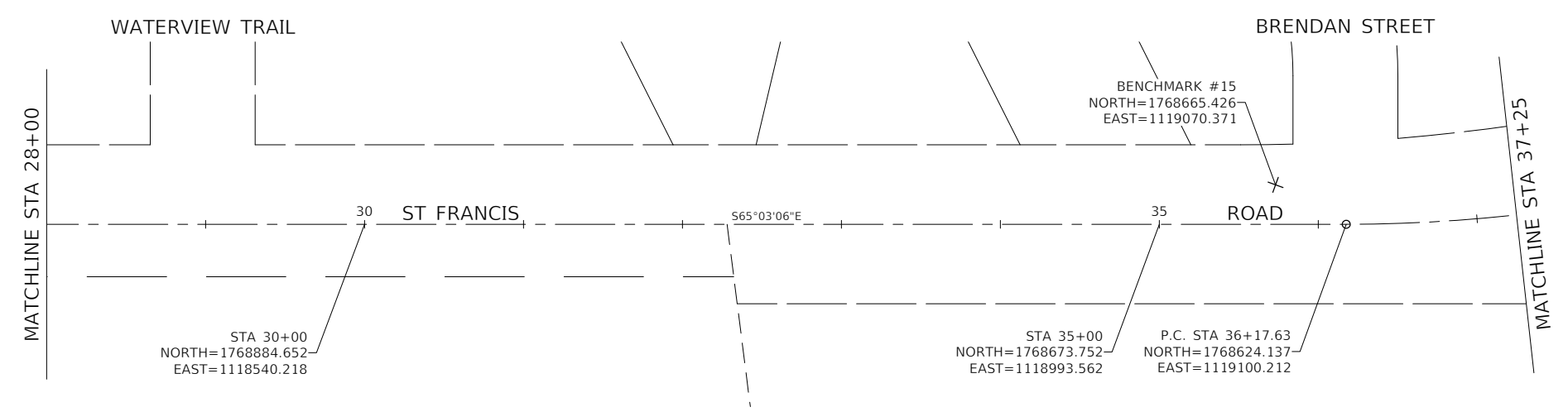
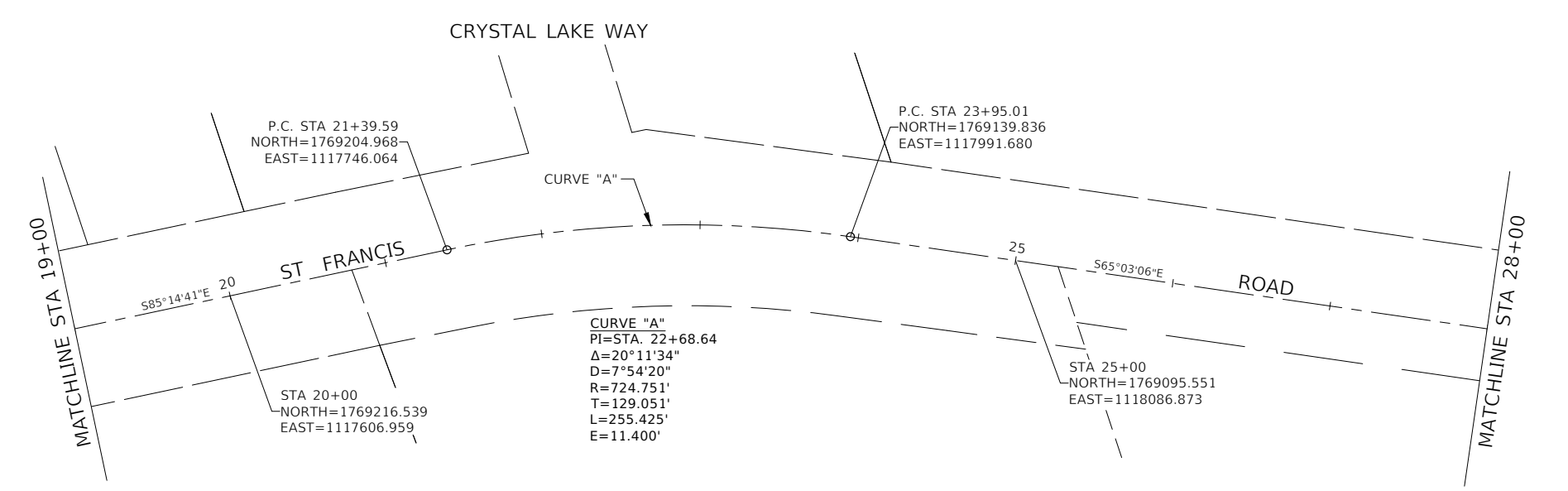
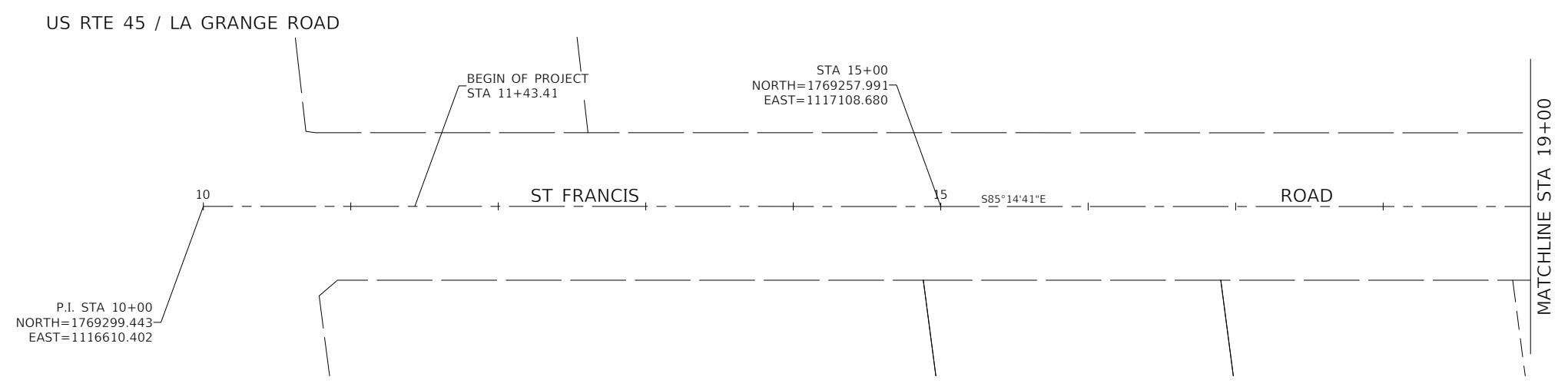
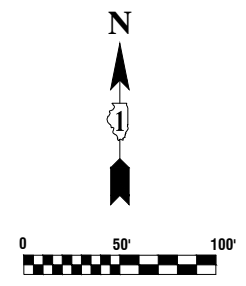
1. LONGITUDINAL JOINT SEALANT SHALL BE PLACED ON THE POLYMERIZED HOT-MIX ASPHALT BINDER COURSE, IL-4.75, N50.
2. ALL PATCHING OPERATIONS SHALL TAKE PLACE AFTER SURFACE MILLING HAS BEEN COMPLETED.

HOT-MIX ASPHALT MIXTURE REQUIREMENTS

MIXTURE TYPE	AIR VOIDS @ Ndes	QMP
ROADWAY RESURFACING		
HOT-MIX ASPHALT SURFACE COURSE, IL-9.5, MIX "D", N70, 1 1/2"	4% @ 70 Gyr.	LR 1030-2
POLYMERIZED HOT-MIX ASPHALT BINDER COURSE, IL-4.75, N50, 3/4"	3.5% @ 50 Gyr.	LR 1030-2
HMA DRIVEWAY PAVEMENT, 4"		
HOT-MIX ASPHALT SURFACE COURSE, IL-9.5, MIX "D", N50, 1 1/2"	4% @ 50 Gyr.	LR 1030-2
HOT-MIX ASPHALT BINDER COURSE, IL-19.0, N50, 2 1/2"	4% @ 50 Gyr.	LR 1030-2
PATCHING		
CLASS D PATCHES (HMA BINDER IL-19mm), 10"	4% @ 70 Gyr.	LR 1030-2
QMP DESIGNATION: QUALITY CONTROL/QUALITY ASSURANCE (QC/QA) PER LR1030-2		

NOTES:

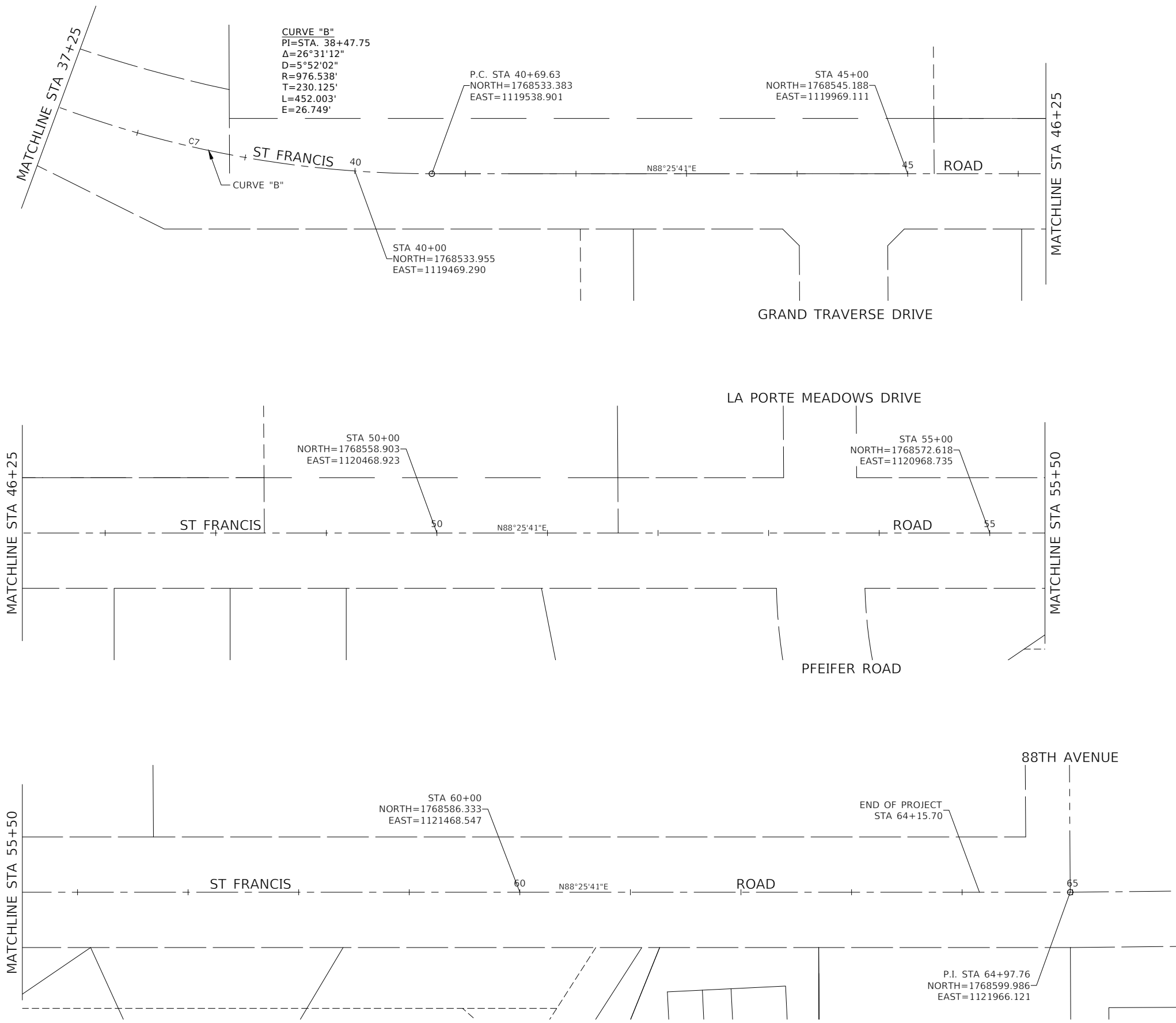
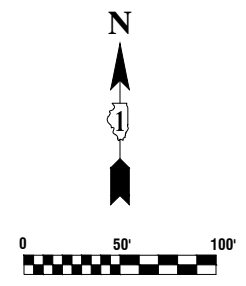
1. THE UNIT WEIGHT USED TO CALCULATE ALL HMA SURFACE MIXTURE IS 112 LBS/SQ/IN.
2. THE "AC TYPE" FOR POLYMERIZED HMA MIXES SHALL BE "SBS/SBR PG 76-22" AND FOR NON-POLYMERIZED HMA THE "AC TYPE" SHALL BE "PG-64-22" UNLESS MODIFIED BY RECLAIMED MATERIALS SPECIFICATIONS.



- NOTES**
- COORDINATES ARE BASED ON ILLINOIS STATE PLANE EASTERN ZONE NORTH AMERICAN DATUM 1983
 - SURVEY FEET UNITS WERE USED.
 - ALL ELEVATIONS REFER TO NAVD88 DATUM.

BENCHMARKS
 BENCHMARK #15
 SQUARE ON TOP OF SOUTH SIDE OF CONC BASE FOR LIGHT POLE AT NORTHWEST COR OF ST FRANCIS RD & BRENDAN ST.
 ELEV=700.63

FILE NAME = 20R0277_01-TIES-01 - P01	USER NAME =	DESIGNED --	REVISED --	STATE OF ILLINOIS DEPARTMENT OF TRANSPORTATION	ST FRANCIS ROAD ROADWAY RESURFACING ALIGNMENT, TIES AND BENCHMARKS		F.A.U. RTE.	SECTION	COUNTY	TOTAL SHEETS	SHEET NO.
	PLOT SCALE =	CHECKED -- WPD	REVISED --		3752	22-00056-00 RS	WILL	22	7		
PLOT DATE = 10-27-23	DRAWN -- AG	REVISED --	SCALE: 1"=50'		SHEET NO. 7 OF 22 SHEETS		STA. 10+61.28 TO STA. 37+25		CONTRACT NO. 61J97		
	CHECKED -- BG	REVISED --	FED. ROAD DIST. NO. 1 ILLINOIS FED. AID PROJECT AH7P(516)								



- NOTES**
- COORDINATES ARE BASED ON ILLINOIS STATE PLANE EASTERN ZONE NORTH AMERICAN DATUM 1983
 - SURVEY FEET UNITS WERE USED.
 - ALL ELEVATIONS REFER TO NAVD88 DATUM.

FILE NAME = 20R0277_01-TIES-01 - P02

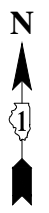
USER NAME =	DESIGNED -- --	REVISED --
	CHECKED -- WPD	REVISED --
PLOT SCALE =	DRAWN -- BG	REVISED --
PLOT DATE = 10-27-23	CHECKED -- AG	REVISED --

**STATE OF ILLINOIS
DEPARTMENT OF TRANSPORTATION**

**ST FRANCIS ROAD
ROADWAY RESURFACING
ALIGNMENT, TIES AND BENCHMARKS**

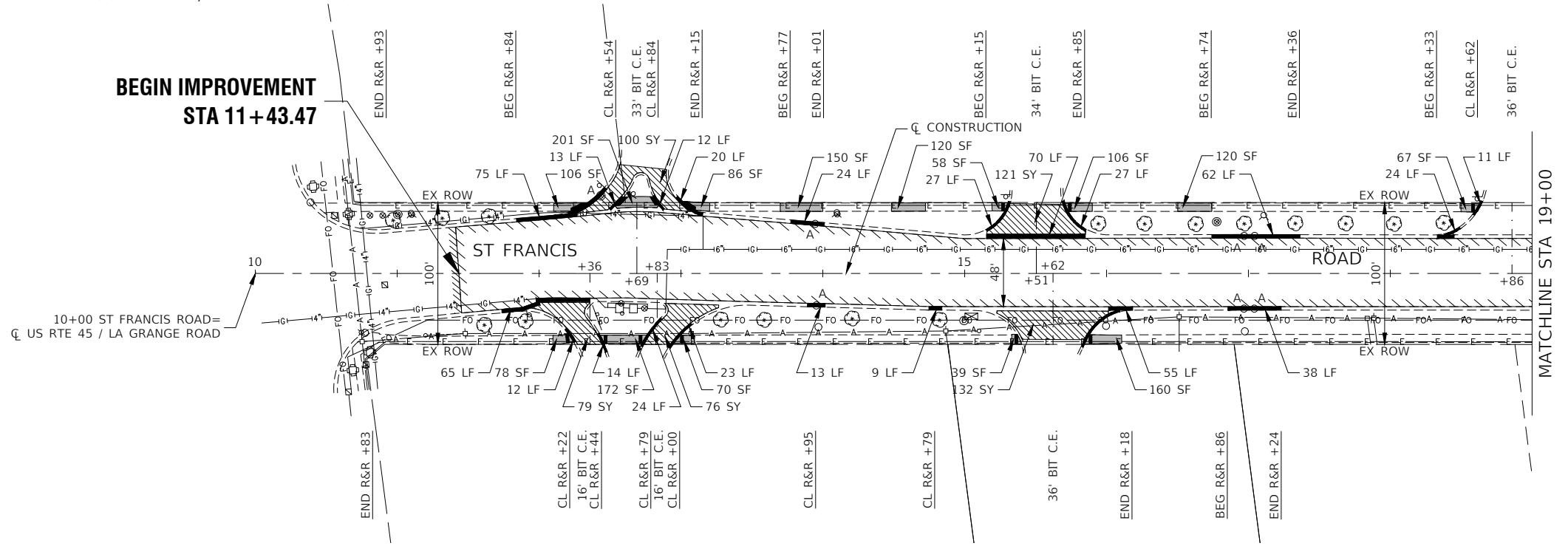
SCALE: 1"=50' SHEET NO. 8 OF 22 SHEETS STA. 37+25 TO STA. 64+97.76

F.A.U. RTE.	SECTION	COUNTY	TOTAL SHEETS	SHEET NO.
3752	22-00056-00 RS	WILL	22	8
CONTRACT NO. 61J97				
FED. ROAD DIST. NO. 1	ILLINOIS	FED. AID PROJECT	AH7P(516)	



US RTE 45 / LA GRANGE ROAD

**BEGIN IMPROVEMENT
STA 11+43.47**



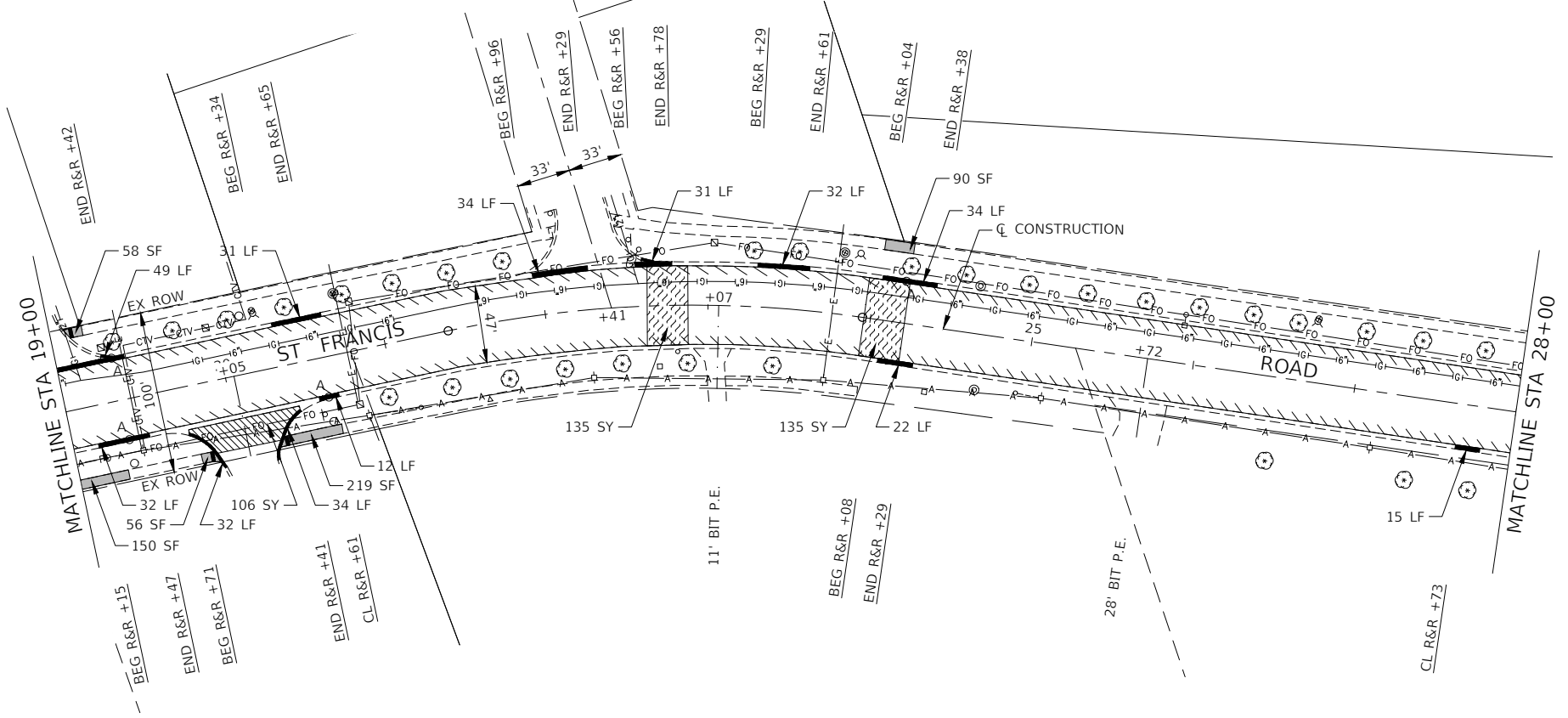
LEGEND

- HMA SURFACE REMOVAL, 2"
- HOT-MIX ASPHALT SURFACE COURSE, IL-9.5, MIX "D", N70, 1 1/2"
- POLYMERIZED HOT-MIX ASPHALT BINDER COURSE, IL-4.75, N50, 3/4"
- SIDEWALK REMOVAL
- PCC SIDEWALK, 5" (7" THRU DRIVEWAYS)
- AGGREGATE BASE COURSE, TYPE B, 4"
- CLASS D PATCHES, 10"
- DRIVEWAY PAVEMENT REMOVAL
- HMA DRIVEWAY PAVEMENT, 4"
- DETECTABLE WARNINGS
- COMBINATION CURB AND GUTTER REMOVAL AND COMBINATION CONCRETE CURB AND GUTTER, TYPE B-6.24 (OR IN KIND)
- "A" DRAINAGE AND UTILITY STRUCTURES TO BE ADJUSTED
- HMA SURFACE REMOVAL - BUTT JOINT
- BEG R&R +XX BEGIN STATION FOR CURB AND GUTTER REMOVAL AND REPLACEMENT
- END R&R +XX END STATION OF CURB AND GUTTER REMOVAL AND REPLACEMENT
- CL R&R +XX CENTER STATION OF CURB AND GUTTER REMOVAL AND REPLACEMENT (UNDER 20 LINEAL FEET)

NOTE:

1. ALL SIDEWALK RAMPs WILL BE IN ACCORDANCE WITH THE HIGHWAY STANDARDS REFERENCED ON SHEET 2.
2. DRIVEWAY REMOVAL AND REPLACEMENT SHALL BE COMPLETED AS DIRECTED BY THE ENGINEER.
3. CLASS D PATCHES, 10" SHALL BE COMPLETED AS DIRECTED BY THE ENGINEER.
4. PHOSPHORUS FERTILIZER HAS BEEN INTENTIONALLY OMITTED FROM THE CONTRACT DUE TO THE PROXIMITY OF THE EXISTING WETLANDS/BODIES OF WATER. A PHOSPHORUS-FREE FERTILIZER SHALL BE USED (MIDDLE NUMBER SHOULD EQUAL 0).

CRYSTAL LAKE WAY



FILE NAME = 20R0277_01-PLAN-01 - P01

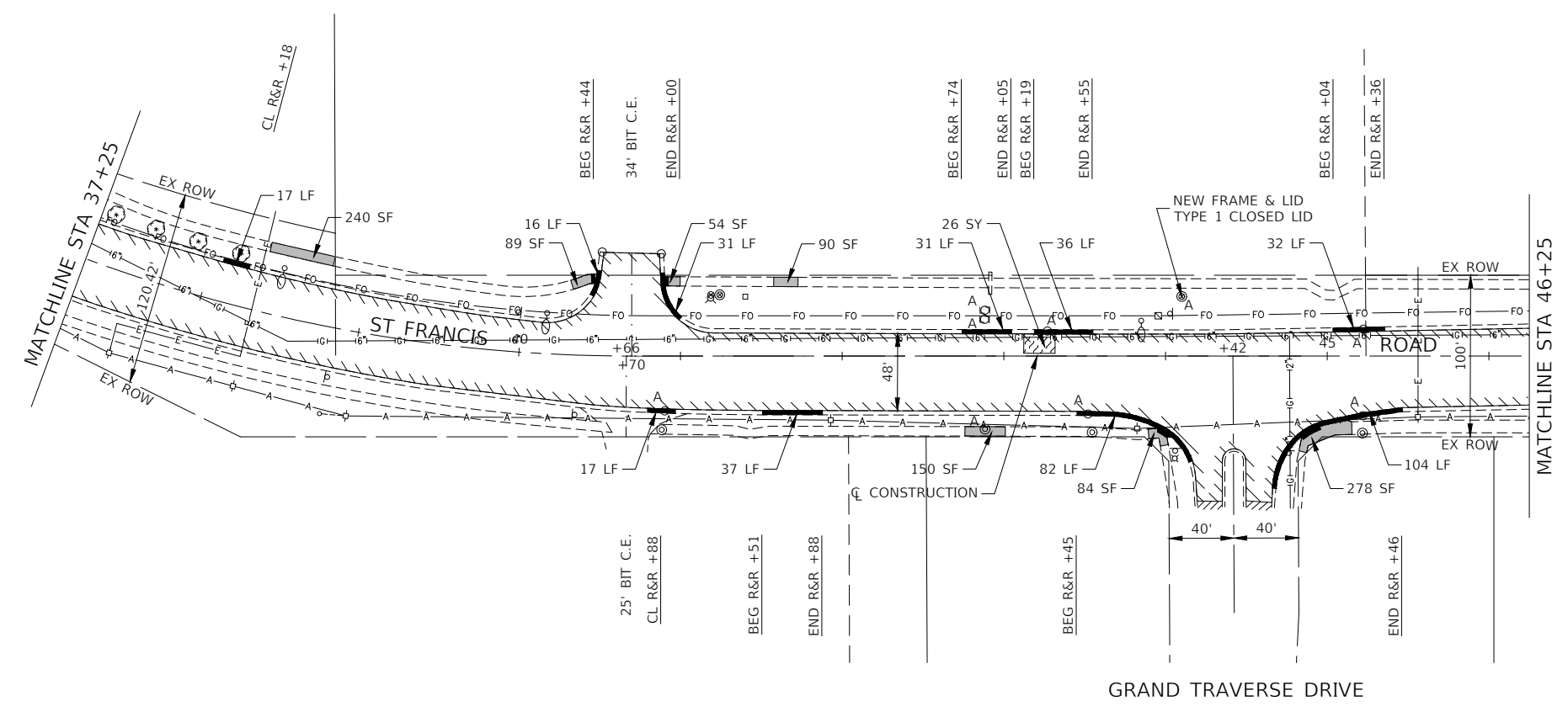
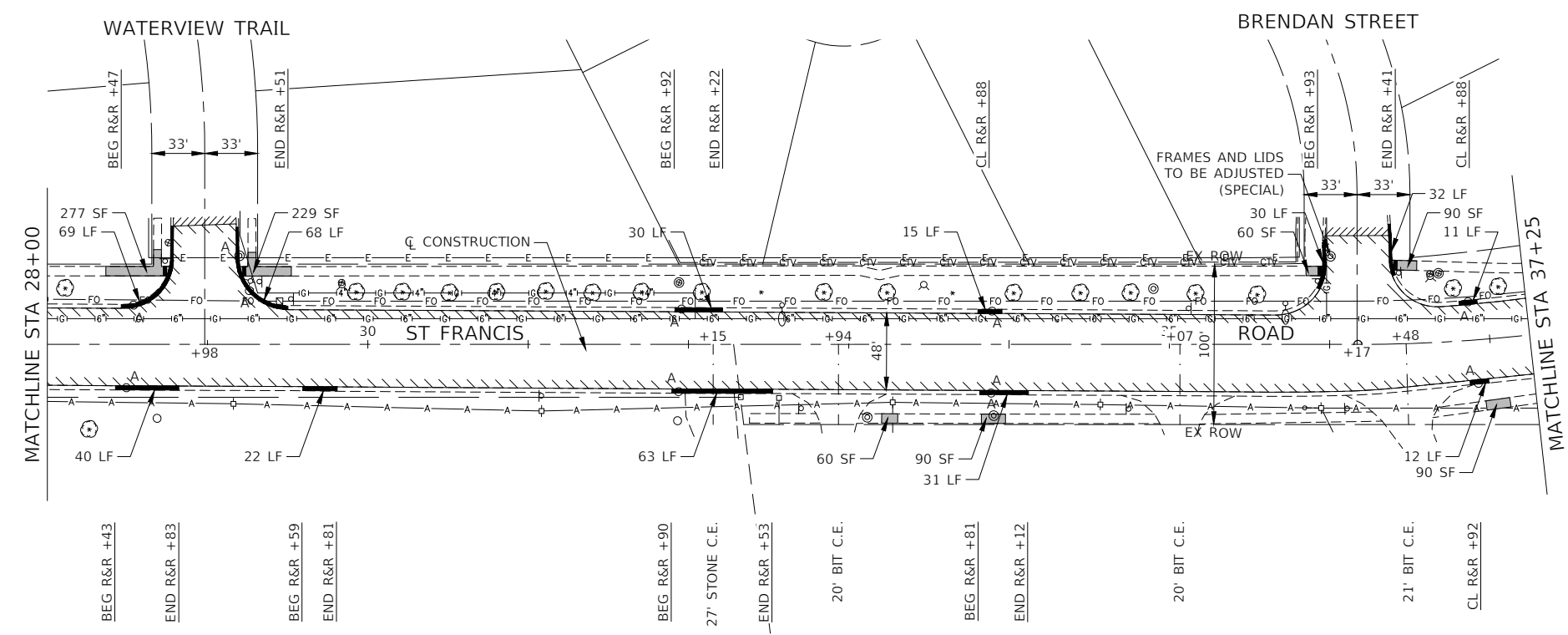
USER NAME =	DESIGNED ---	REVISED ---
	CHECKED --- WPD	REVISED ---
PLOT SCALE =	DRAWN --- AG	REVISED ---
PLOT DATE = 10-27-23	CHECKED --- BG	REVISED ---

**STATE OF ILLINOIS
DEPARTMENT OF TRANSPORTATION**

**ST FRANCIS ROAD
ROADWAY RESURFACING
PROPOSED IMPROVEMENT PLAN**

SCALE: 1"=50' SHEET NO. 9 OF 22 SHEETS STA. 10+61.28 TO STA. 28+00

F.A.U. RTE.	SECTION	COUNTY	TOTAL SHEETS	SHEET NO.
3752	22-00056-00 RS	WILL	22	9
CONTRACT NO. 61J97				
FED. ROAD DIST. NO. 1	ILLINOIS	FED. AID PROJECT	AH7P(516)	



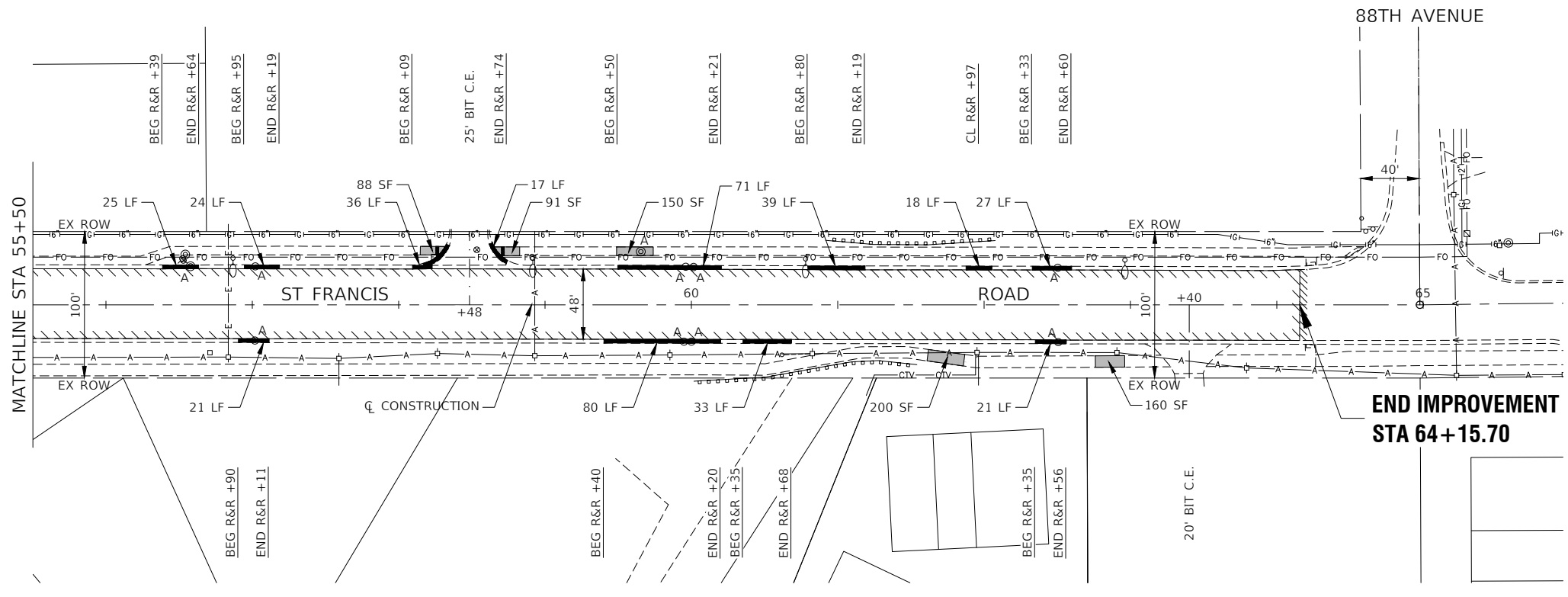
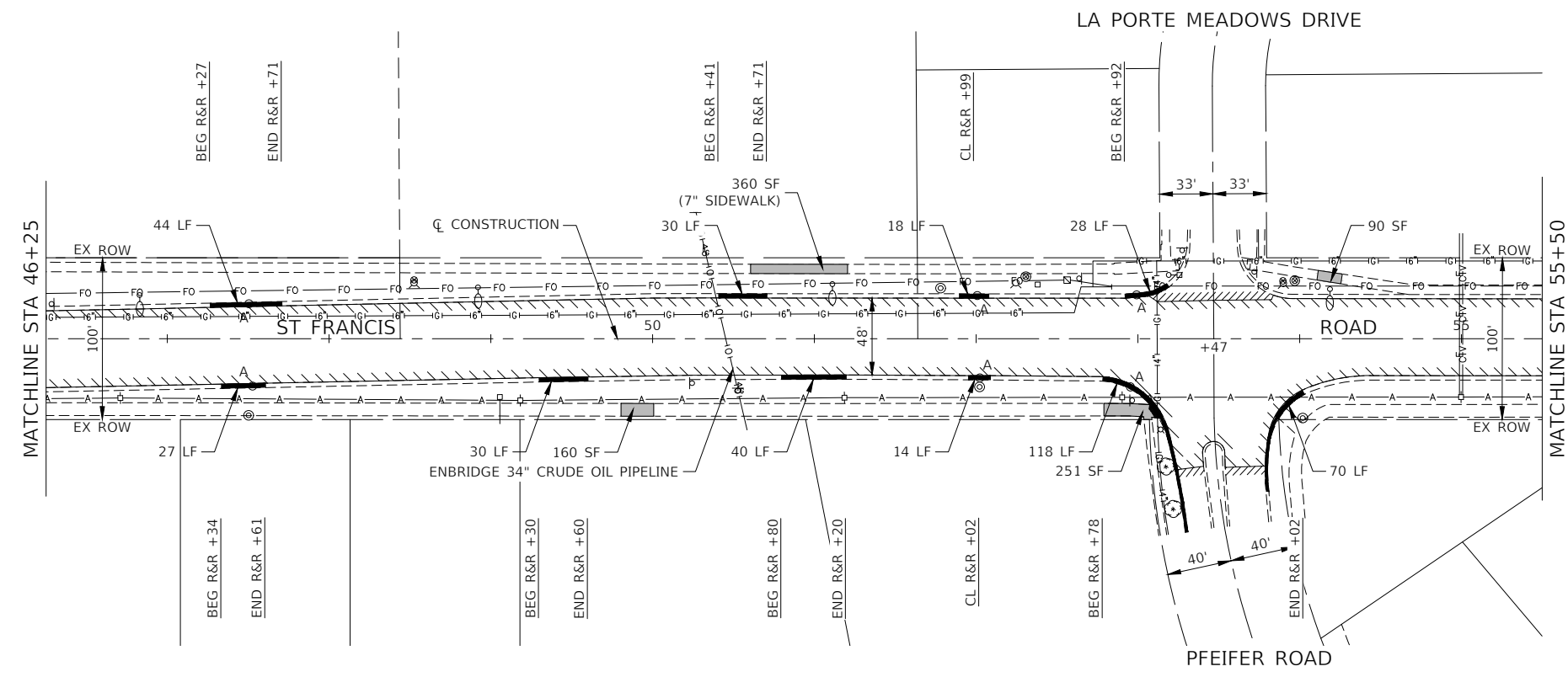
LEGEND

- HMA SURFACE REMOVAL, 2"
- HOT-MIX ASPHALT SURFACE COURSE, IL-9.5, MIX "D", N70, 1 1/2"
- POLYMERIZED HOT-MIX ASPHALT BINDER COURSE, IL-4.75, N50, 3/4"
- SIDEWALK REMOVAL
- PCC SIDEWALK, 5" (7" THRU DRIVEWAYS)
- AGGREGATE BASE COURSE, TYPE B, 4"
- CLASS D PATCHES, 10"
- DRIVEWAY PAVEMENT REMOVAL
- HMA DRIVEWAY PAVEMENT, 4"
- DETECTABLE WARNINGS
- COMBINATION CURB AND GUTTER REMOVAL AND COMBINATION CONCRETE CURB AND GUTTER, TYPE B-6.24 (OR IN KIND)
- "A" DRAINAGE AND UTILITY STRUCTURES TO BE ADJUSTED
- HMA SURFACE REMOVAL - BUTT JOINT
- BEG R&R +XX BEGIN STATION FOR CURB AND GUTTER REMOVAL AND REPLACEMENT
- END R&R +XX END STATION OF CURB AND GUTTER REMOVAL AND REPLACEMENT
- CL R&R +XX CENTER STATION OF CURB AND GUTTER REMOVAL AND REPLACEMENT (UNDER 20 LINEAL FEET)

NOTE:

1. ALL SIDEWALK RAMPS WILL BE IN ACCORDANCE WITH THE HIGHWAY STANDARDS REFERENCED ON SHEET 2.
2. DRIVEWAY REMOVAL AND REPLACEMENT SHALL BE COMPLETED AS DIRECTED BY THE ENGINEER.
3. CLASS D PATCHES, 10" SHALL BE COMPLETED AS DIRECTED BY THE ENGINEER.
4. PHOSPHORUS FERTILIZER HAS BEEN INTENTIONALLY OMITTED FROM THE CONTRACT DUE TO THE PROXIMITY OF THE EXISTING WETLANDS/BODIES OF WATER. A PHOSPHORUS-FREE FERTILIZER SHALL BE USED (MIDDLE NUMBER SHOULD EQUAL 0).

FILE NAME = 20R0277_01-PLAN-01 - P02	USER NAME =	DESIGNED -	REVISED -	STATE OF ILLINOIS DEPARTMENT OF TRANSPORTATION	ST FRANCIS ROAD ROADWAY RESURFACING PROPOSED IMPROVEMENT PLAN	F.A.U. RTE.	SECTION	COUNTY	TOTAL SHEETS	SHEET NO.	
		CHECKED - WPD	REVISED -			3752	22-00056-00 RS	WILL	22	10	
	PLOT SCALE =	DRAWN - BG	REVISED -			CONTRACT NO. 61J97					
	PLOT DATE = 10-27-23	CHECKED - AG	REVISED -			FED. ROAD DIST. NO. 1 ILLINOIS FED. AID PROJECT AH7P(516)					
					SCALE: 1"=50'	SHEET NO. 10 OF 22 SHEETS	STA. 28+00	TO STA. 46+25			



LEGEND

- HMA SURFACE REMOVAL, 2"
- HOT-MIX ASPHALT SURFACE COURSE, IL-9.5, MIX "D", N70, 1 1/2"
- POLYMERIZED HOT-MIX ASPHALT BINDER COURSE, IL-4.75, N50, 3/4"
- SIDEWALK REMOVAL
PCC SIDEWALK, 5" (7" THRU DRIVEWAYS)
AGGREGATE BASE COURSE, TYPE B, 4"
- CLASS D PATCHES, 10"
- DRIVEWAY PAVEMENT REMOVAL
HMA DRIVEWAY PAVEMENT, 4"
- DETECTABLE WARNINGS
- COMBINATION CURB AND GUTTER REMOVAL AND
COMBINATION CONCRETE CURB AND GUTTER, TYPE B-6.24 (OR IN KIND)
- "A"
DRAINAGE AND UTILITY STRUCTURES TO BE ADJUSTED
- HMA SURFACE REMOVAL - BUTT JOINT
- BEG R&R +XX
BEGIN STATION FOR CURB AND GUTTER REMOVAL AND
REPLACEMENT
- END R&R +XX
END STATION OF CURB AND GUTTER REMOVAL AND
REPLACEMENT
- CL R&R +XX
CENTER STATION OF CURB AND GUTTER REMOVAL AND
REPLACEMENT (UNDER 20 LINEAL FEET)

NOTE:

1. ALL SIDEWALK RAMPs WILL BE IN ACCORDANCE WITH THE HIGHWAY STANDARDS REFERENCED ON SHEET 2.
2. DRIVEWAY REMOVAL AND REPLACEMENT SHALL BE COMPLETED AS DIRECTED BY THE ENGINEER.
3. CLASS D PATCHES, 10" SHALL BE COMPLETED AS DIRECTED BY THE ENGINEER.
4. PHOSPHORUS FERTILIZER HAS BEEN INTENTIONALLY OMITTED FROM THE CONTRACT DUE TO THE PROXIMITY OF THE EXISTING WETLANDS/BODIES OF WATER. A PHOSPHORUS-FREE FERTILIZER SHALL BE USED (MIDDLE NUMBER SHOULD EQUAL 0).

FILE NAME = 20R0277_01-PLAN-01 - P03

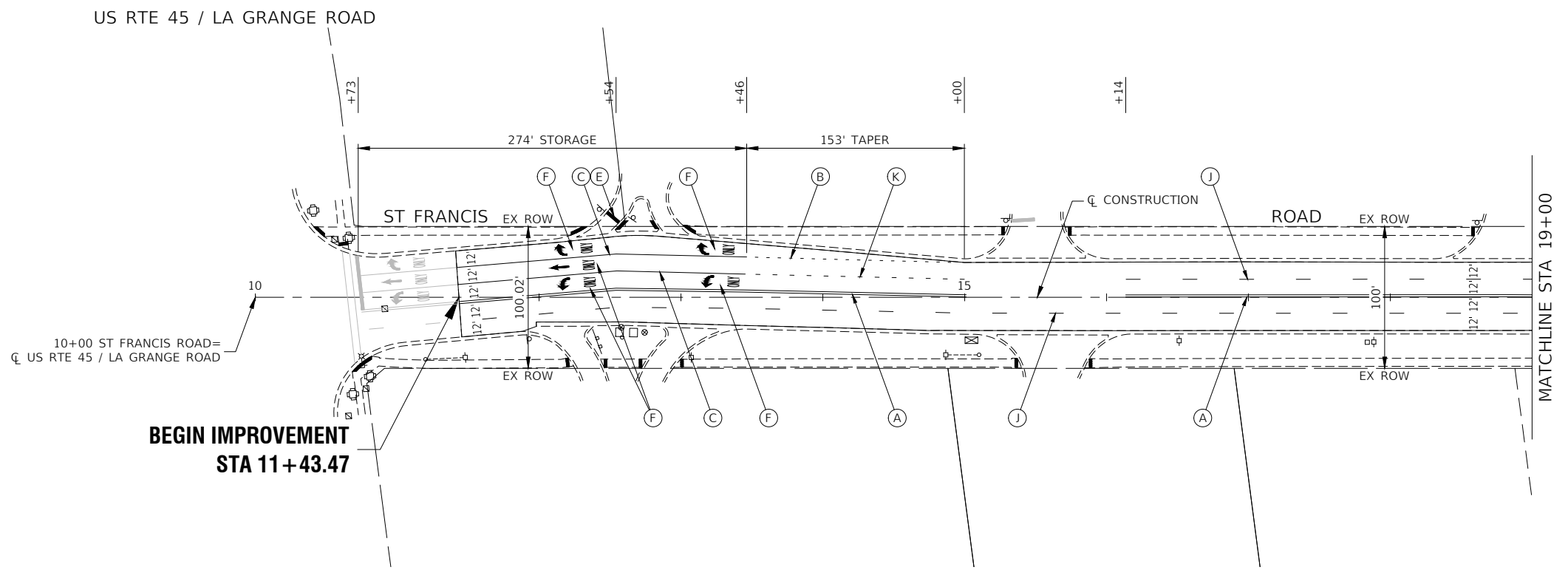
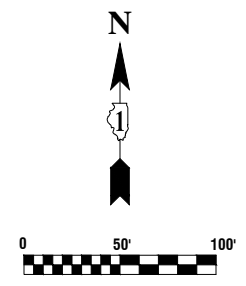
USER NAME =	DESIGNED ---	REVISED ---	
	CHECKED --- WPD	REVISED ---	
PLOT SCALE =	DRAWN --- BG	REVISED ---	
PLOT DATE = 10-27-23	CHECKED --- AG	REVISED ---	

**STATE OF ILLINOIS
DEPARTMENT OF TRANSPORTATION**

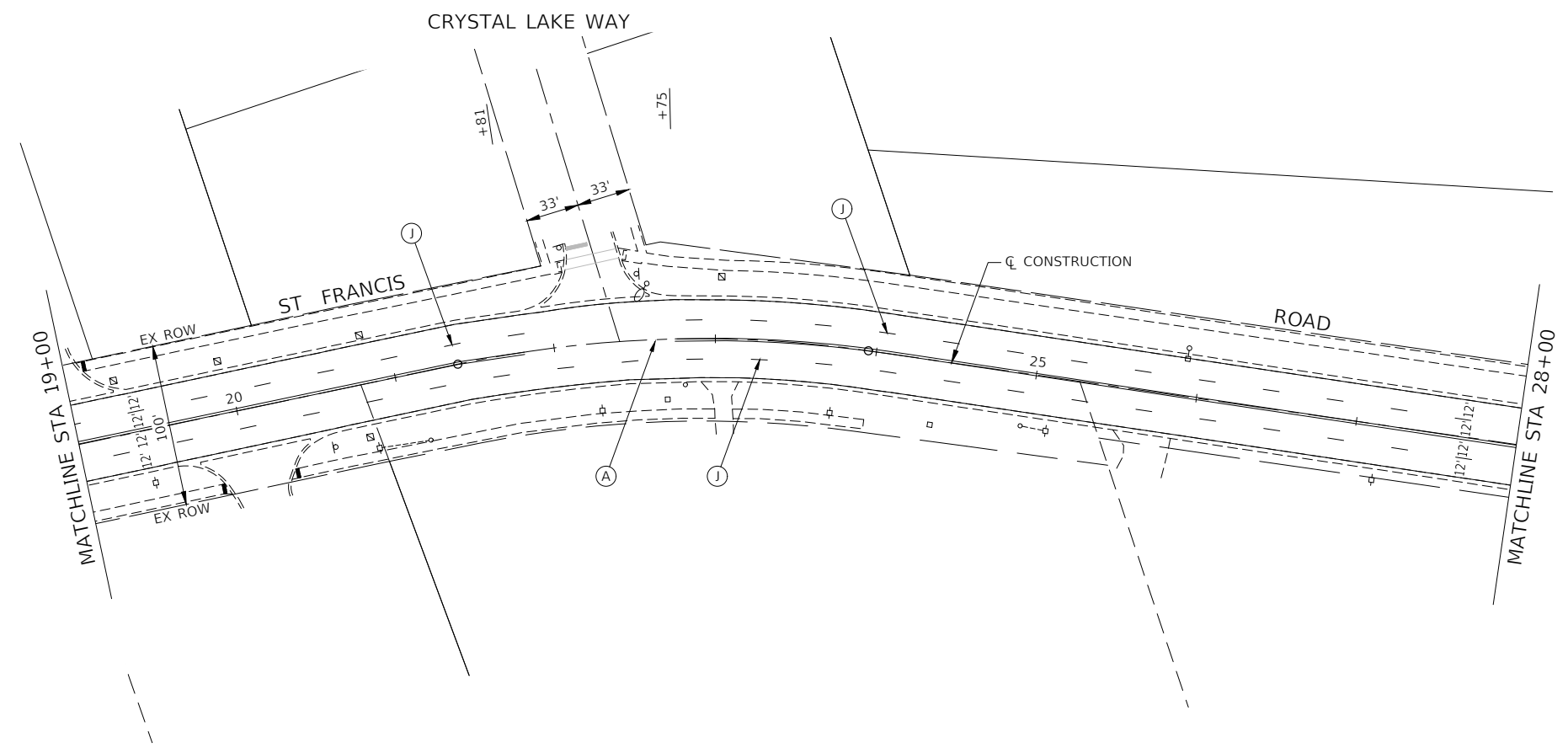
**ST FRANCIS ROAD
ROADWAY RESURFACING
PROPOSED IMPROVEMENT PLAN**

SCALE: 1"=50' SHEET NO. 11 OF 22 SHEETS STA. 46+25 TO STA. 64+15.70

F.A.U. RTE.	SECTION	COUNTY	TOTAL SHEETS	SHEET NO.
3752	22-00056-00 RS	WILL	22	11
CONTRACT NO. 61J97				
FED. ROAD DIST. NO. 1 ILLINOIS FED. AID PROJECT AH7P(516)				



**BEGIN IMPROVEMENT
STA 11+43.47**



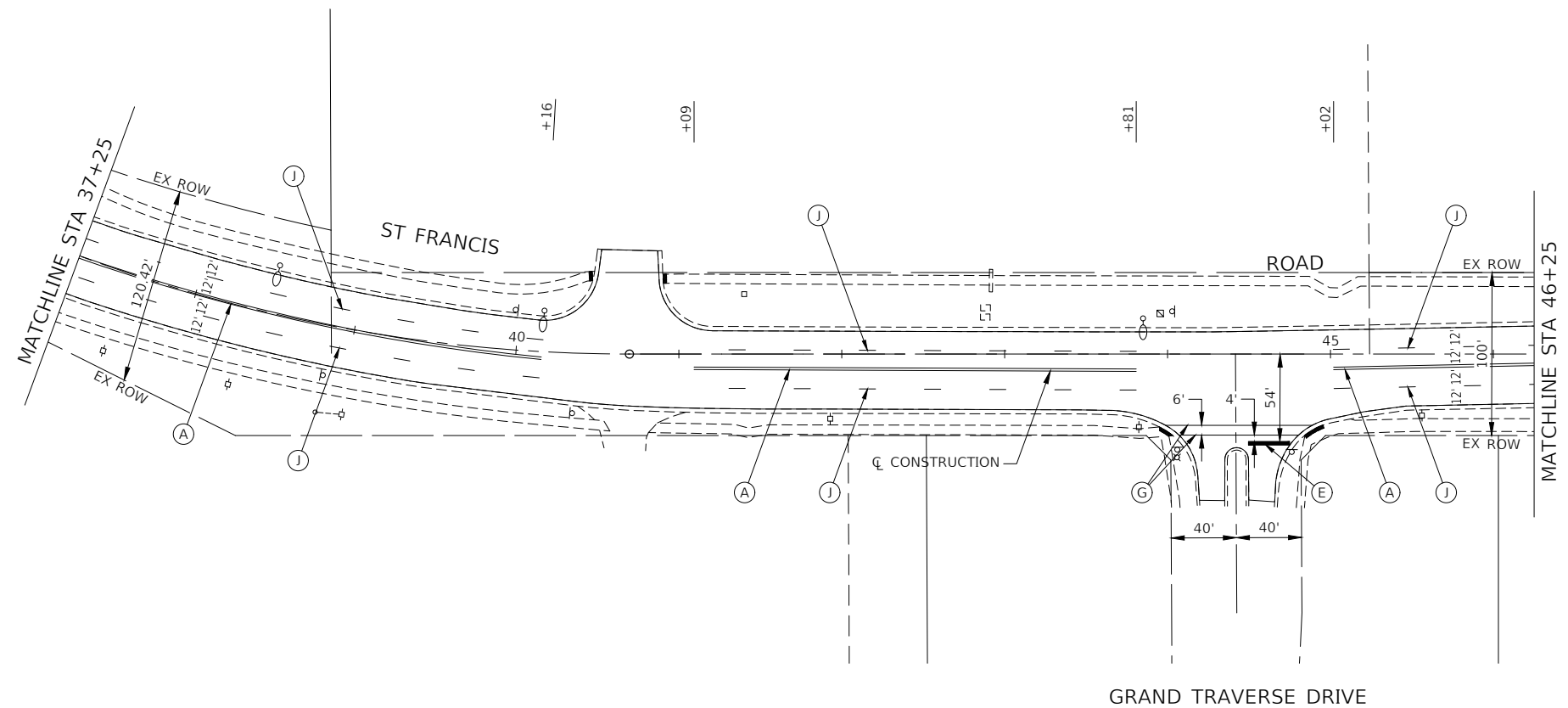
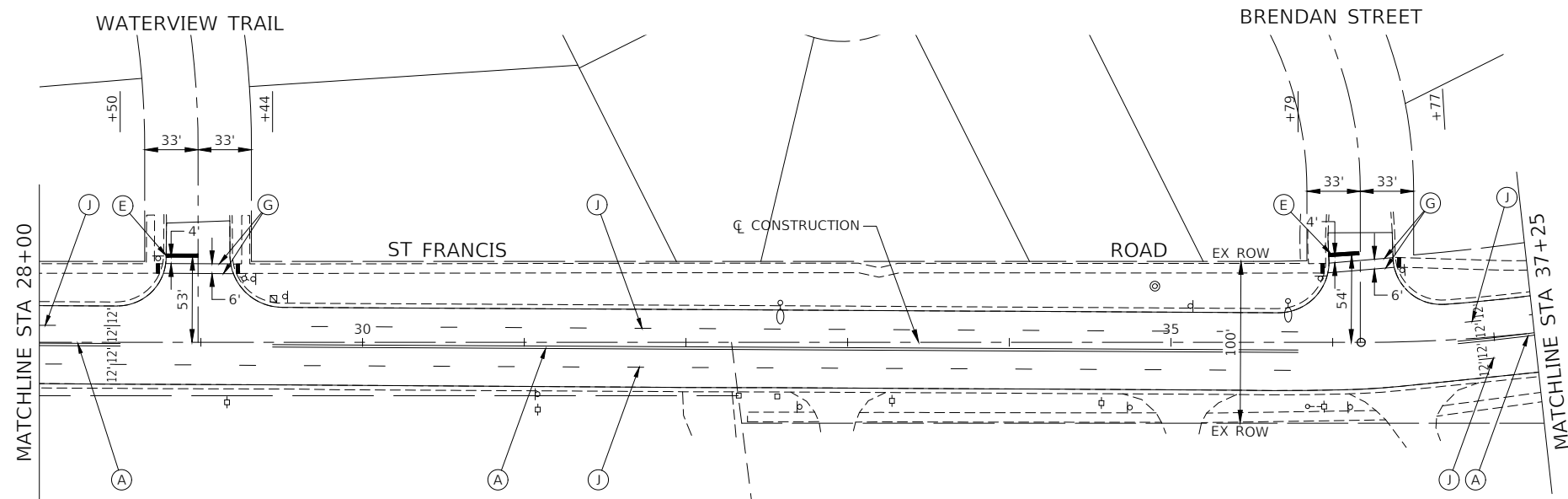
PAVEMENT MARKING LEGEND

- (A) THERMOPLASTIC PAVEMENT MARKING - 4" LINE DOUBLE YELLOW LINE (11" C-C)
- (B) THERMOPLASTIC PAVEMENT MARKING - 6" LINE WHITE SKIP DASH (2' LINE-6' SPACE)
- (C) THERMOPLASTIC PAVEMENT MARKING - 6" LINE WHITE LANE LINE
- (E) THERMOPLASTIC PAVEMENT MARKING - 24" LINE WHITE STOP BAR LINE
- (F) THERMOPLASTIC PAVEMENT MARKING - WHITE LETTERS & SYMBOLS
- (G) THERMOPLASTIC PAVEMENT MARKING - 6" LINE WHITE CROSS-WALK (6' C-C OR AS DIMENSIONED)
- (J) THERMOPLASTIC PAVEMENT MARKING - 4" LINE WHITE LINE (10' LINE-30' SPACE)
- (K) THERMOPLASTIC PAVEMENT MARKING - 8" LINE WHITE SKIP DASH (3' LINE-9' SPACE)
- (L) THERMOPLASTIC PAVEMENT MARKING - 12" LINE YELLOW DIAGONAL LINE (75' C-C OR 5 EQUALLY SPACED)

NOTES

1. SEE TC-13 DISTRICT ONE TYPICAL PAVEMENT MARKING FOR GUIDANCE.
2. ALL PAVEMENT MARKINGS SHALL BE THERMOPLASTIC UNLESS OTHERWISE SHOWN.

FILE NAME = 20R0277_01-PVMK-01 - P01	USER NAME =	DESIGNED -- --	REVISED --	STATE OF ILLINOIS DEPARTMENT OF TRANSPORTATION	ST FRANCIS ROAD ROADWAY RESURFACING PAVEMENT MARKING AND SIGNAGE PLAN	F.A.U. RTE. 3752	SECTION 22-00056-00 RS	COUNTY WILL	TOTAL SHEETS 22	SHEET NO. 12		
	PLOT SCALE =	DRAWN -- BG	REVISED --			SCALE: 1"=50'	SHEET NO. 12 OF 22 SHEETS	STA. 10+61.28	TO STA. 28+00	CONTRACT NO. 61J97		
	PLOT DATE = 10-27-23	CHECKED -- AG	REVISED --			FED. ROAD DIST. NO. 1 ILLINOIS FED. AID PROJECT AH7P(516)						



PAVEMENT MARKING LEGEND

- (A) THERMOPLASTIC PAVEMENT MARKING - 4" LINE DOUBLE YELLOW LINE (11" C-C)
- (B) THERMOPLASTIC PAVEMENT MARKING - 6" LINE WHITE SKIP DASH (2' LINE-6' SPACE)
- (C) THERMOPLASTIC PAVEMENT MARKING - 6" LINE WHITE LANE LINE
- (E) THERMOPLASTIC PAVEMENT MARKING - 24" LINE WHITE STOP BAR LINE
- (F) THERMOPLASTIC PAVEMENT MARKING - WHITE LETTERS & SYMBOLS
- (G) THERMOPLASTIC PAVEMENT MARKING - 6" LINE WHITE CROSS-WALK (6' C-C OR AS DIMENSIONED)
- (J) THERMOPLASTIC PAVEMENT MARKING - 4" LINE WHITE LINE (10' LINE-30' SPACE)
- (K) THERMOPLASTIC PAVEMENT MARKING - 8" LINE WHITE SKIP DASH (3' LINE-9' SPACE)
- (L) THERMOPLASTIC PAVEMENT MARKING - 12" LINE YELLOW DIAGONAL LINE (75' C-C OR 5' EQUALLY SPACED)

NOTES

1. SEE TC-13 DISTRICT ONE TYPICAL PAVEMENT MARKING FOR GUIDANCE.
2. ALL PAVEMENT MARKINGS SHALL BE THERMOPLASTIC UNLESS OTHERWISE SHOWN.

FILE NAME = 20R0277_01-PVMK-01 - P02

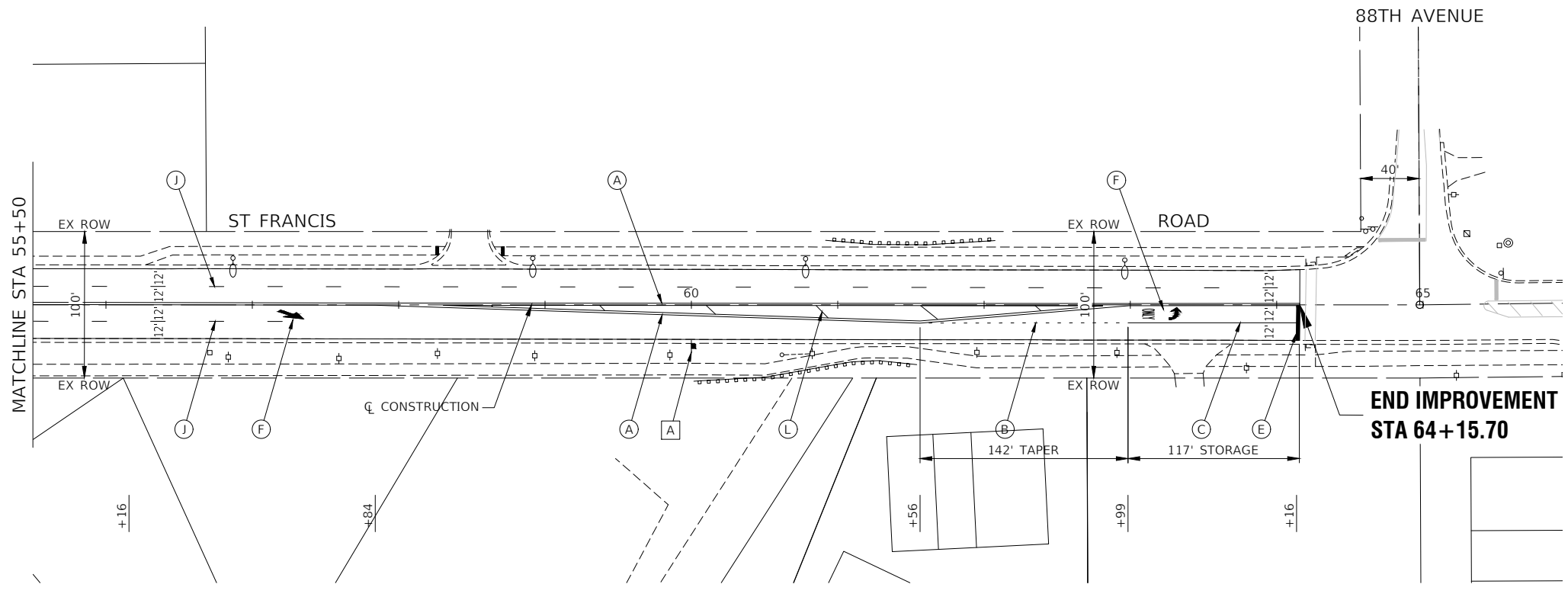
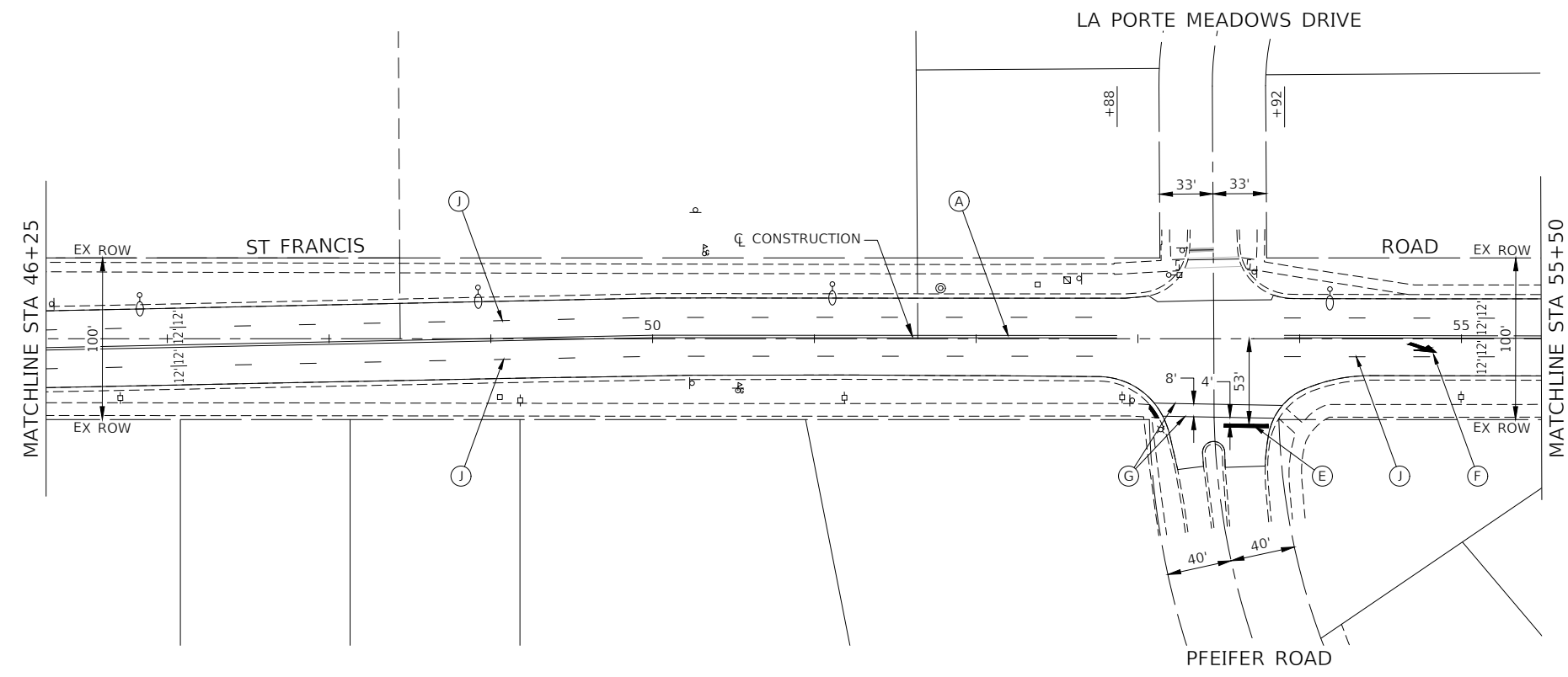
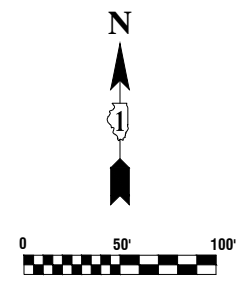
USER NAME =	DESIGNED --	REVISOR --
	CHECKED -- WPD	REVISIONS --
PLOT SCALE =	DRAWN -- BG	REVISIONS --
PLOT DATE = 10-27-23	CHECKED -- AG	REVISIONS --

STATE OF ILLINOIS
DEPARTMENT OF TRANSPORTATION

ST FRANCIS ROAD
ROADWAY RESURFACING
PAVEMENT MARKING AND SIGNAGE PLAN

F.A.U. RTE.	SECTION	COUNTY	TOTAL SHEETS	SHEET NO.
3752	22-00056-00 RS	WILL	22	13
CONTRACT NO. 61J97				
FED. ROAD DIST. NO. 1 ILLINOIS FED. AID PROJECT AH7P(516)				

SCALE: 1"=50' SHEET NO. 13 OF 22 SHEETS STA. 28+00 TO STA. 46+25



TRAFFIC SIGN LEGEND



PAVEMENT MARKING LEGEND

- (A) THERMOPLASTIC PAVEMENT MARKING - 4" LINE DOUBLE YELLOW LINE (11" C-C)
- (B) THERMOPLASTIC PAVEMENT MARKING - 6" LINE WHITE SKIP DASH (2' LINE-6' SPACE)
- (C) THERMOPLASTIC PAVEMENT MARKING - 6" LINE WHITE LANE LINE
- (E) THERMOPLASTIC PAVEMENT MARKING - 24" LINE WHITE STOP BAR LINE
- (F) THERMOPLASTIC PAVEMENT MARKING - WHITE LETTERS & SYMBOLS
- (G) THERMOPLASTIC PAVEMENT MARKING - 6" LINE WHITE CROSS-WALK (6' C-C OR AS DIMENSIONED)
- (J) THERMOPLASTIC PAVEMENT MARKING - 4" LINE WHITE LINE (10' LINE-30' SPACE)
- (K) THERMOPLASTIC PAVEMENT MARKING - 8" LINE WHITE SKIP DASH (3' LINE-9' SPACE)
- (L) THERMOPLASTIC PAVEMENT MARKING - 12" LINE YELLOW DIAGONAL LINE (75' C-C OR 5 EQUALLY SPACED)

NOTES

1. SEE TC-13 DISTRICT ONE TYPICAL PAVEMENT MARKING FOR GUIDANCE.
2. ALL PAVEMENT MARKINGS SHALL BE THERMOPLASTIC UNLESS OTHERWISE SHOWN.

FILE NAME = 20R0277_01-PVMK-01 - P03

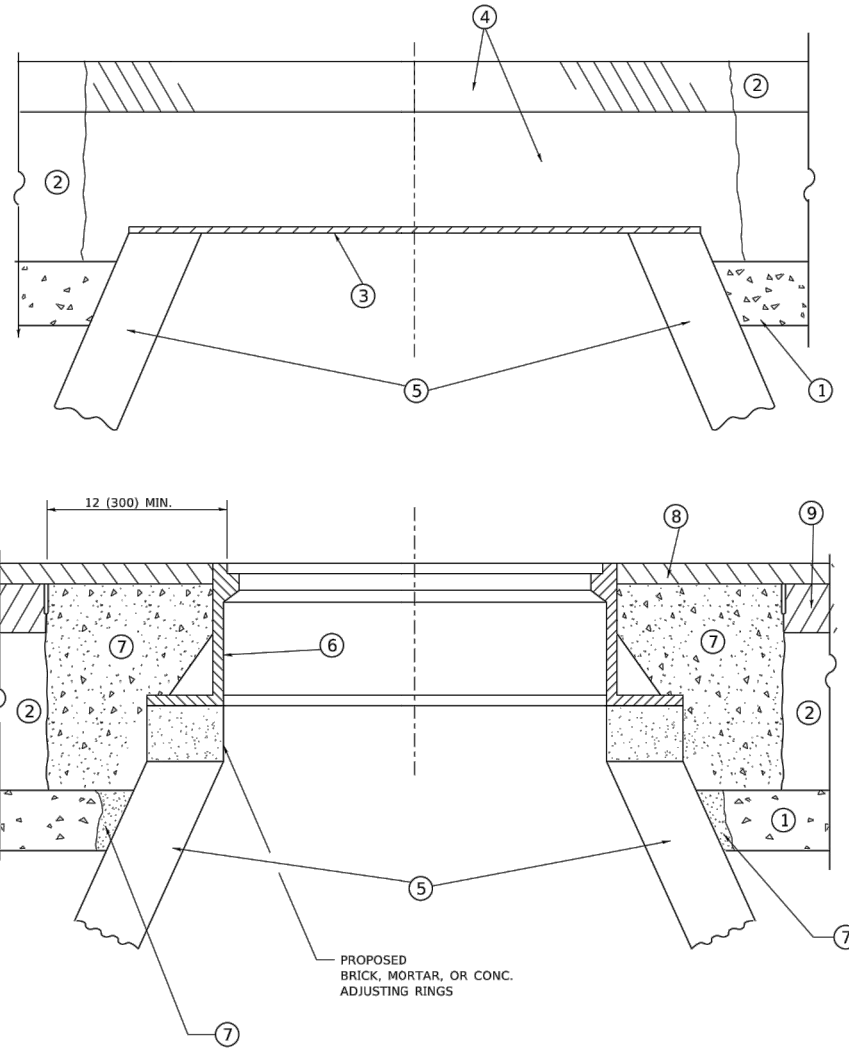
USER NAME =	DESIGNED --	REVISOR --
	CHECKED -- WPD	REVISIONS --
PLOT SCALE =	DRAWN -- BG	REVISIONS --
PLOT DATE = 10-27-23	CHECKED -- AG	REVISIONS --

**STATE OF ILLINOIS
DEPARTMENT OF TRANSPORTATION**

**ST FRANCIS ROAD
ROADWAY RESURFACING
PAVEMENT MARKING AND SIGNAGE PLAN**

SCALE: 1"=50' SHEET NO. 14 OF 22 SHEETS STA. 46+25 TO STA. 64+15.70

F.A.U. RTE.	SECTION	COUNTY	TOTAL SHEETS	SHEET NO.
3752	22-00056-00 RS	WILL	22	14
CONTRACT NO. 61J97				
FED. ROAD DIST. NO. 1	ILLINOIS	FED. AID PROJECT	AH7P(516)	



DETAILS FOR FRAMES AND LIDS ADJUSTMENT WITH MILLING

NOTES

1. EXISTING BROKEN FRAMES AND LIDS SHALL BE REMOVED AND DISPOSED OF BY THE CONTRACTOR AND SHALL BE REPLACED AS DIRECTED BY THE ENGINEER. REPLACEMENT FRAMES AND LIDS WILL BE PAID FOR IN ACCORDANCE WITH ARTICLE 109.04 OF THE STANDARD SPECIFICATIONS UNLESS A SEPARATE PAY ITEM HAS BEEN PROVIDED.
2. IF THE EXISTING LIDS ARE OPEN, THE FRAME WILL BE ADJUSTED TO THE ELEVATION OF THE MILLED PAVEMENT SURFACE PRIOR TO THE MILLING OPERATION. THE FRAME WILL NOT BE REMOVED AND COVERED BY THE METAL PLATE.
3. CITY OF CHICAGO CASTINGS ARE THE PROPERTY OF THE CITY AND THE CONTRACTOR SHALL NOTIFY THE CITY FOR REMOVAL AND DISPOSITION OF THE CASTINGS.
4. THE METAL PLATE USED TO COVER THE STRUCTURE SHALL REMAIN THE PROPERTY OF THE CONTRACTOR.
5. THE CONTRACTOR SHALL REMOVE ALL TRAFFIC CONTROL DEVICES BY THE END OF EACH WORK SHIFT.

CONSTRUCTION PROCEDURES

- STAGE 1 (BEFORE PAVEMENT MILLING)**
- A) REMOVE A MINIMUM OF 12 (300) OF THE PAVEMENT FROM AROUND THE STRUCTURE.
 - B) REMOVE THE EXISTING FRAME AND LID FROM THE STRUCTURE.
 - C) COVER THE STRUCTURE OPENING WITH A 36 (900) DIAMETER METAL PLATE.
 - D) BACKFILL WITH CRUSHED STONE AND HMA SURFACE MIX APPROVED BY THE ENGINEER. (MIN. 3 (80) HMA TO REMAIN AFTER MILLING).
- STAGE 2 (AFTER PAVEMENT MILLING)**
- A) REMOVE THE HMA SURFACE MIX AND CRUSHED STONE.
 - B) INSTALL THE FRAME AND LID; ADJUST THE FRAME TO ITS FINAL SURFACE ELEVATION.
 - C) THE SURROUNDING SPACE SHALL BE FILLED WITH CLASS PP-2* CONCRETE TO THE ELEVATION OF THE SURFACE OF THE EXISTING BASE COURSE OR THE BINDER COURSE.
- * UNLESS OTHERWISE SPECIFIED IN THE PLANS.

THE PROCEDURE EXPLAINED ABOVE SHALL CONFORM TO THE APPLICABLE PORTIONS OF SECTIONS 353, 406, 602, AND 603 OF THE STANDARD SPECIFICATIONS EXCEPT THAT "THE CONTRACTOR SHALL ADJUST THE STRUCTURES TO THE FINISHED PAVEMENT ELEVATION NO MORE THAN 5 CALENDAR DAYS PRIOR TO PLACEMENT OF THE FINAL LIFT OF SURFACE UNLESS APPROVED BY THE ENGINEER."

LEGEND

- | | |
|--|-------------------------------|
| ① SUB-BASE GRANULAR MATERIAL | ⑥ FRAME AND LID (SEE NOTES) |
| ② EXISTING PAVEMENT | ⑦ CLASS PP-2* CONCRETE |
| ③ 36 (900) DIAMETER METAL PLATE | ⑧ PROPOSED HMA SURFACE COURSE |
| ④ PROPOSED CRUSHED STONE AND HMA SURFACE MIX | ⑨ PROPOSED HMA BINDER COURSE |
| ⑤ EXISTING STRUCTURE | |

LOCATION OF STRUCTURES

THE CONTRACTOR WILL BE REQUIRED TO KEEP A RECORD OF THE LOCATIONS OF THE BURIED STRUCTURES ACCORDING TO THE STATION AND DISTANCE LEFT OR RIGHT OF THE CENTERLINE OF PAVEMENT. UPON COMPLETION OF THE WORK, THE CONTRACTOR WILL DELIVER THE RECORD TO THE ENGINEER.

BASIS OF PAYMENT

1. REMOVING FRAMES AND LIDS ON DRAINAGE AND UTILITY STRUCTURES IN THE PAVEMENT PRIOR TO MILLING, AND ADJUSTING TO FINAL GRADE PRIOR TO PLACING THE SURFACE COURSE, WILL BE PAID FOR AT THE CONTRACT UNIT PRICE EACH FOR "FRAMES AND LIDS TO BE ADJUSTED (SPECIAL)."
2. THIS WORK WILL NOT BE PAID FOR WHEN DRAINAGE AND UTILITY STRUCTURES ARE SPECIFIED FOR PAYMENT AS STRUCTURE RECONSTRUCTION.
3. NEW FRAMES AND LIDS, WHEN SPECIFIED, WILL BE PAID FOR SEPARATELY.
4. WHEN STRUCTURES ARE TO BE ADJUSTED OR RECONSTRUCTED, THE LOWERING AND RAISING OF THE FRAMES AND LIDS WILL NOT BE PAID FOR SEPARATELY BUT WILL BE INCLUDED IN THE COST OF THE CORRESPONDING PAY ITEM.

ALL DIMENSIONS ARE IN INCHES (MILLIMETERS) UNLESS OTHERWISE SHOWN

USER NAME = Lawrence.DeManche	DESIGNED - R. SHAH	REVISED - R. BORO 03-09-11	STATE OF ILLINOIS DEPARTMENT OF TRANSPORTATION	DETAILS FOR FRAMES AND LIDS ADJUSTMENT WITH MILLING				F.A. RTE.	SECTION	COUNTY	TOTAL SHEETS	SHEET NO.
PLOT SCALE = 100.0000' / in.	CHECKED -	REVISED - R. BORO 12-06-11		SCALE: NONE	SHEET 1	OF 1	SHEETS	STA.	TO STA.	BD600-03 (BD-08) CONTRACT NO.		
PLOT DATE = 9/15/2023	DATE - 10-25-94	REVISED - K. SMITH 11-18-22		ILLINOIS FED. AID PROJECT								
		REVISED - K. SMITH 09-15-23										

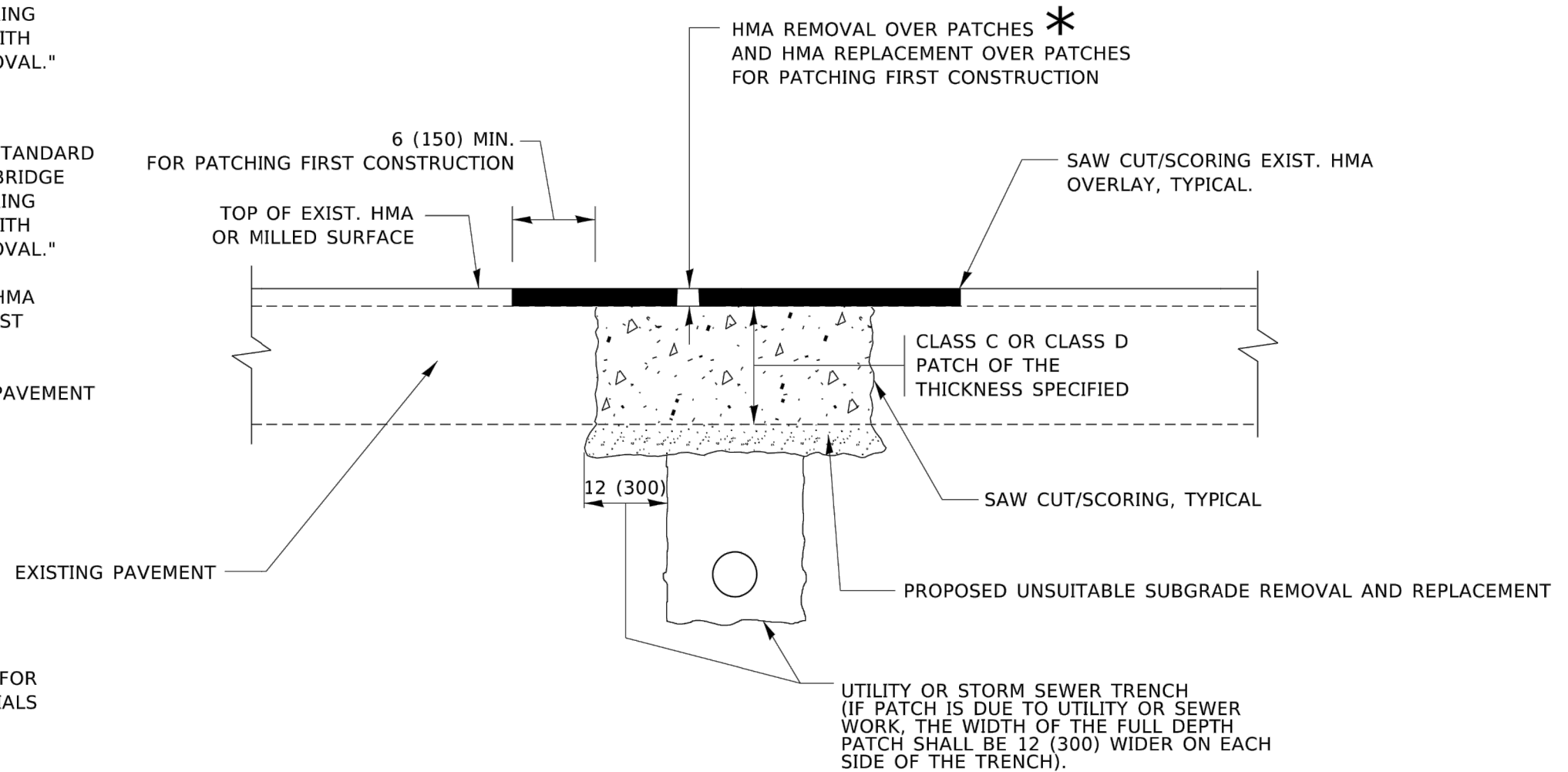
FILE NAME = 20R0277_01-DTSL-01 - BD08	USER NAME =	DESIGNED --	REVISED --	STATE OF ILLINOIS DEPARTMENT OF TRANSPORTATION	STATE STANDARDS				F.A.U. RTE.	SECTION	COUNTY	TOTAL SHEETS	SHEET NO.
		CHECKED --	REVISED --		SCALE:	SHEET NO. 15	OF 22	SHEETS	STA.	TO STA.	3752 22-00056-00 RS WILL 22 15		
		DRAWN --	REVISED --		ILLINOIS FED. AID PROJECT AH7P(516)								
		CHECKED --	REVISED --										

METHOD OF MEASUREMENT

REFER TO SECTION 442 OF THE STANDARD SPECIFICATIONS FOR ROAD AND BRIDGE CONSTRUCTION AND THE RECURRING SPECIAL PROVISION "PATCHING WITH HOT-MIX ASPHALT OVERLAY REMOVAL."

BASIS OF PAYMENT

1. REFER TO SECTION 442 OF THE STANDARD SPECIFICATIONS FOR ROAD AND BRIDGE CONSTRUCTION AND THE RECURRING SPECIAL PROVISION "PATCHING WITH HOT-MIX ASPHALT OVERLAY REMOVAL."
2. SAW CUT/SCORING OF EXISTING HMA OVERLAY IS INCLUDED IN THE COST OF PAVEMENT PATCHING.
3. SAW CUT/SCORING OF EXISTING PAVEMENT IS INCLUDED IN THE COST OF PAVEMENT PATCHING.



* SEE TYPICAL SECTIONS FOR THICKNESS AND MATERIALS

SEQUENCE OF CONSTRUCTION (PATCHING FIRST)

1. REMOVE THE EXISTING HMA MATERIAL OVER THE AREA TO BE PATCHED.
2. REMOVE AND REPLACE WITH CLASS C OR D PATCH.
3. REPLACE HMA MATERIAL OVER THE AREA TO BE PATCHED.

SEQUENCE OF CONSTRUCTION (MILLING FIRST)

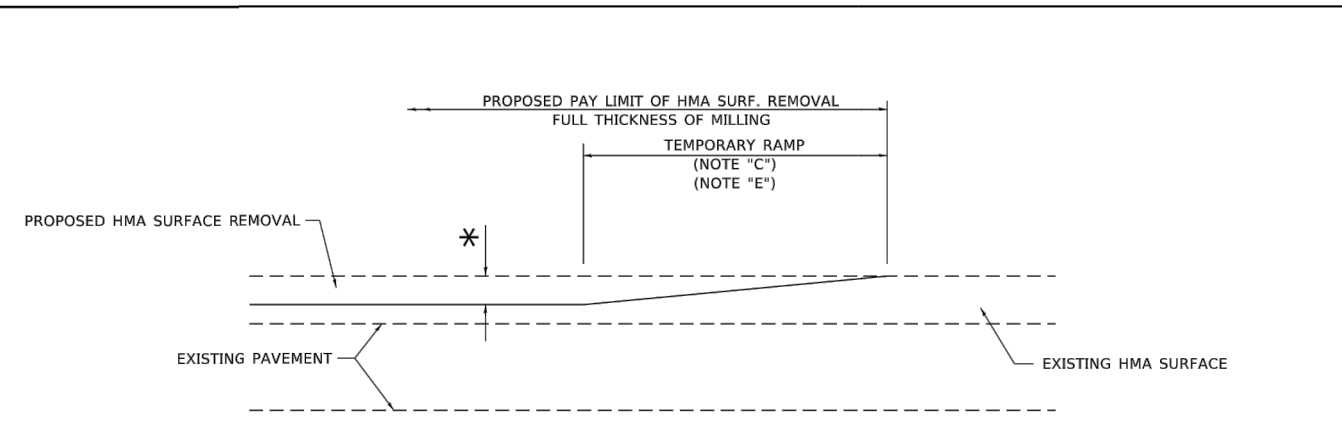
1. MILL HMA FIRST IF THERE IS AT LEAST 4½ INCHES OR MORE OF HMA MATERIAL ON TOP OF THE EXISTING PAVEMENT OR IF THE PAVEMENT IS FULL DEPTH HMA. A MINIMUM OF 2 INCHES OF HMA MATERIAL SHALL BE IN PLACE AFTER MILLING.
2. REMOVE AND REPLACE WITH FULL DEPTH CLASS D PATCHES TO TOP OF MILLED SURFACE.

ALL DIMENSIONS ARE IN INCHES (MILLIMETERS) UNLESS OTHERWISE SHOWN.

FILE NAME: p:\work\paw_bentley.com\paw\DOT\Documents\DOT_Offices\District_1\Projects\515622\23\ACAD\Drawings\CAD\Sheet\bd22.dgn

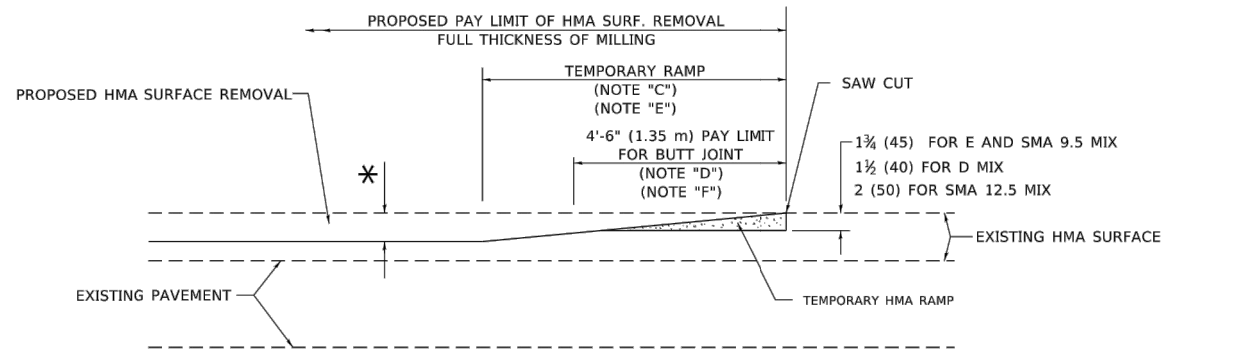
USER NAME = Lawrence.DeManche	DESIGNED - R. SHAH	REVISED - R. BORO 01-01-07	STATE OF ILLINOIS DEPARTMENT OF TRANSPORTATION	PAVEMENT PATCHING FOR HMA SURFACED PAVEMENT	F.A. RTE.	SECTION	COUNTY	TOTAL SHEETS	SHEET NO.		
PLOT SCALE = 100.0000' / in.	CHECKED -	REVISED - R. BORO 09-04-07			SCALE: NONE	SHEET 1 OF 1 SHEETS	STA. TO STA.	BD400-04 (BD-22) CONTRACT NO.			
PLOT DATE = 11/18/2022	DATE - 10-25-94	REVISED - K. ENG 10-27-08			ILLINOIS FED. AID PROJECT						
		REVISED - K. SMITH 11-18-22									

FILE NAME = 20R0277_01-DTLS-01 - BD22	USER NAME =	DESIGNED --	REVISED --	STATE OF ILLINOIS DEPARTMENT OF TRANSPORTATION	STATE STANDARDS	F.A.U RTE.	SECTION	COUNTY	TOTAL SHEETS	SHEET NO.		
		CHECKED --	REVISED --			SCALE:	SHEET NO. 16 OF 22 SHEETS	STA. TO STA.	3752 22-00056-00 RS WILL 22 16 CONTRACT NO. 61J97			
		DRAWN --	REVISED --			FED. ROAD DIST. NO. 1 ILLINOIS FED. AID PROJECT AH7P(516)						
		CHECKED --	REVISED --									



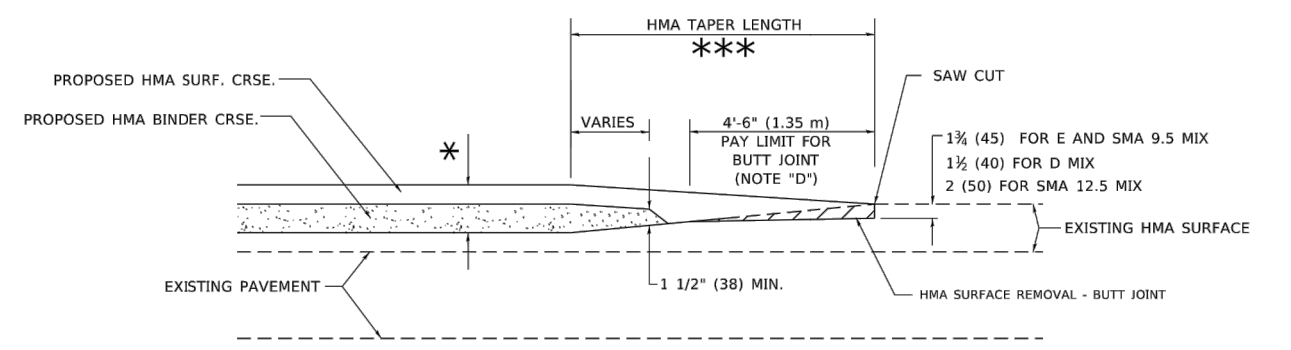
MILLED TEMPORARY RAMP
(FOR BUTT JOINT AND HMA TAPER SEE DETAIL BELOW)

OPTION 1

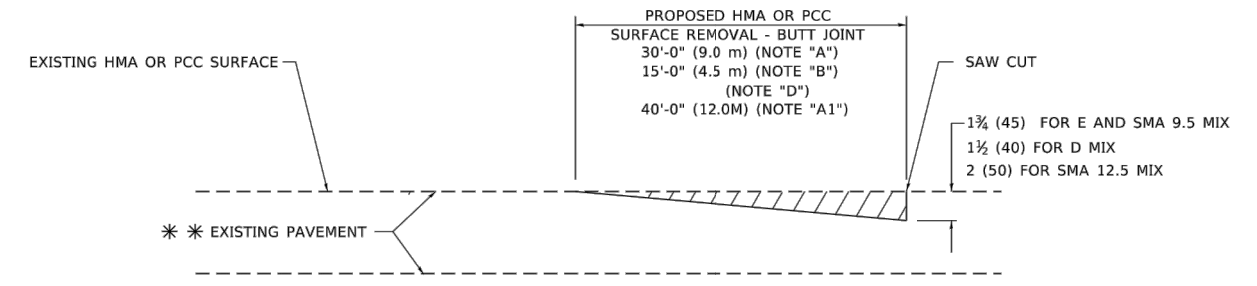


HMA CONSTRUCTED TEMPORARY RAMP
(FOR BUTT JOINT AND HMA TAPER SEE DETAIL BELOW)

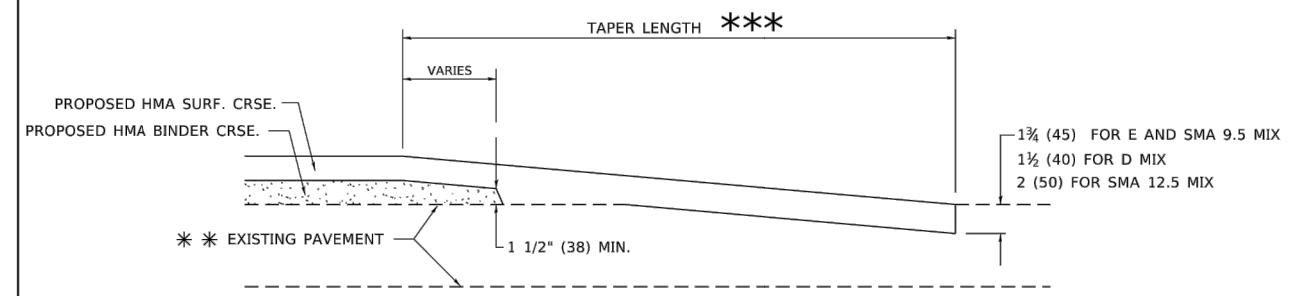
OPTION 2
TYPICAL TEMPORARY RAMP



BUTT JOINT AND HMA TAPER
TYPICAL BUTT JOINT AND HMA TAPER FOR MILLING AND RESURFACING



BUTT JOINT DETAIL



HMA TAPER DETAIL

TYPICAL BUTT JOINT AND HMA TAPER FOR RESURFACING ONLY

*** PC CONCRETE, HMA OR HMA RESURFACED PAVEMENT.

GENERAL NOTES

- A. MAINLINE ARTERIAL ROADWAYS AND MAJOR SIDE ROADS.
- A1. INTERSTATES
- B. MINOR SIDE ROADS.
- C. THE TEMP. RAMP SHALL BE CONSTRUCTED IMMEDIATELY UPON REMOVAL OF THE EXISTING HMA SURFACE.
- D. THE BUTT JOINT SHALL BE CONSTRUCTED IMMEDIATELY PRIOR TO PLACING THE PROPOSED HMA COURSES.
- E. TAPER THE TEMP. RAMP AT A RATE OF 3' - 4" (1.02m) PER 1 INCH (25 mm) OF MILLING THICKNESS.
* SEE TYPICAL SECTIONS FOR MILLING THICKNESS.
- F. SEE ARTICLE 406.08 AND 406.14 OF THE STANDARD SPECIFICATIONS FOR "HMA AND/OR PCC SURFACE REMOVAL, BUTT JOINT".
- *** 20'-0" (6.1 m) PER 1 (25) RESURFACING (NOTE "A")
10'-0" (3.0 m) PER 1 (25) RESURFACING (NOTE "B")

BASIS OF PAYMENT

- 1. THE BUTT JOINT WILL BE PAID FOR AT THE CONTRACT UNIT PRICE PER SQUARE YARD (SQUARE METER) FOR "HOT-MIX ASPHALT SURFACE REMOVAL - BUTT JOINT" OR FOR "PORTLAND CEMENT CONCRETE SURFACE REMOVAL- BUTT JOINT".
- 2. THE TEMPORARY RAMP AND SAW CUT SHALL BE INCLUDED IN THE UNIT COST FOR HMA OR PCC SURFACE REMOVAL-BUTT JOINT.

ALL DIMENSIONS ARE IN INCHES (MILLIMETERS) UNLESS OTHERWISE SHOWN.

FILE NAME: p:\work\paw_bentley.com\paw\DOT\Documents\DOT Offices\District 1\Projects\51515022\31\CA\CD\HMA\CD\Sheet\bd32.dgn

USER NAME = Lawrence.DeManche	DESIGNED - M. DE YONG	REVISED - A. ABBAS 03-21-97
	DRAWN -	REVISED - M. GOMEZ 04-06-01
PLOT SCALE = 100.0000' / in.	CHECKED -	REVISED - R. BORO 01-01-07
PLOT DATE = 11/18/2022	DATE - 06-13-90	REVISED - K. SMITH 11-18-22

STATE OF ILLINOIS
DEPARTMENT OF TRANSPORTATION

BUTT JOINT AND HMA TAPER DETAILS

SCALE: NONE	SHEET 1 OF 1 SHEETS	STA. TO STA.	F.A.U. RTE.	SECTION	COUNTY	TOTAL SHEETS	SHEET NO.
			BD400-05	BD-32		CONTRACT NO.	
			ILLINOIS FED. AID PROJECT				

FILE NAME = 20R0277_01-DTLS-01 - BD32

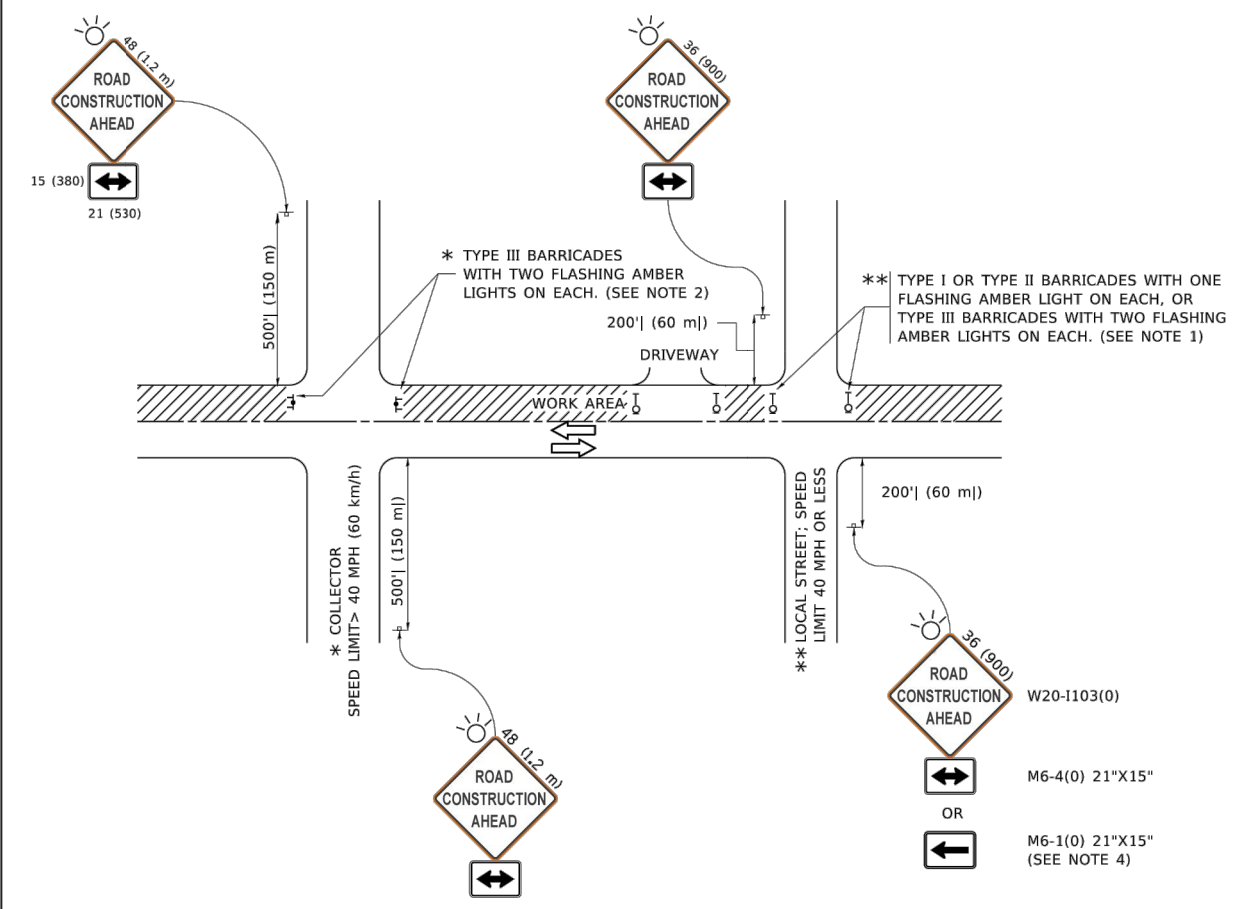
USER NAME =	DESIGNED --	REVISED --
	CHECKED --	REVISED --
PLOT SCALE =	DRAWN --	REVISED --
PLOT DATE =	CHECKED --	REVISED --

STATE OF ILLINOIS
DEPARTMENT OF TRANSPORTATION

STATE STANDARDS

SCALE:	SHEET NO. 17 OF 22 SHEETS	STA. TO STA.
--------	---------------------------	--------------

F.A.U. RTE.	SECTION	COUNTY	TOTAL SHEETS	SHEET NO.
3752	22-00056-00 RS	WILL	22	17
CONTRACT NO. 61J97				
FED. ROAD DIST. NO. 1 ILLINOIS FED. AID PROJECT AH7P(516)				



NOTES:

1. SIDE ROAD WITH A SPEED LIMIT OF 40 MPH (60 km/h) OR LESS AS SHOWN ON THE DRAWING AND AS DIRECTED BY THE ENGINEER:
 - a) ONE "ROAD CONSTRUCTION AHEAD" SIGN 36 x 36 (900x900) WITH A FLASHER MOUNTED ON IT APPROXIMATELY 200' (60 m) IN ADVANCE OF THE MAIN ROUTE.
 - b) THE CLOSED PORTION OF THE MAIN ROUTE SHALL BE PROTECTED BY BLOCKING WITH TYPE I, TYPE II OR TYPE III BARRICADES, 1/3 OF THE CROSS SECTION OF THE CLOSED PORTION.
2. SIDE ROAD WITH A SPEED LIMIT GREATER THAN 40 MPH (60 km/h) AS SHOWN ON THE DRAWING AND AS DIRECTED BY THE ENGINEER:
 - a) ONE "ROAD CONSTRUCTION AHEAD" SIGN 48 x 48 (1.2 m x 1.2 m) WITH A FLASHER MOUNTED ON IT APPROXIMATELY 500' (150 m) IN ADVANCE OF THE MAIN ROUTE.
 - b) THE CLOSED PORTION OF THE MAIN ROUTE SHALL BE PROTECTED BY BLOCKING WITH TYPE III BARRICADES, 1/2 OF THE CROSS SECTION OF THE CLOSED PORTION.
3. CONES MAY BE SUBSTITUTED FOR BARRICADES OR DRUMS AT HALF THE SPACING DURING DAY OPERATIONS. CONES SHALL BE A MINIMUM OF 28 (710) IN HEIGHT.
4. SIGNING AND THE WORK ZONE, A SINGLE HEADED ARROW (M6-1) SHALL BE USED IN LIEU OF THE DOUBLE HEADED ARROW (M6-4).
5. WHEN WORK IS BEING PERFORMED ON A SIDE ROAD OR DRIVEWAY, FOLLOW THE APPLICABLE STANDARD(S). THE DIRECTIONAL ARROW (M6-1 OR M6-4) SHALL BE COVERED OR REMOVED WHEN NO LONGER CONSISTENT WITH THE TRAFFIC CONTROL SET-UP.
6. ADVANCE WARNING SIGNS ARE TO BE OMITTED ON DRIVEWAYS UNLESS OTHERWISE SPECIFIED IN THE PLANS OR BY THE ENGINEER.
7. THE TRAFFIC CONTROL AND PROTECTION FOR SIDE ROADS, INTERSECTIONS, AND DRIVEWAYS SHALL BE INCLUDED IN THE COST OF SPECIFIED TRAFFIC CONTROL STANDARDS OR ITEMS.

All dimensions are in inches (millimeters) unless otherwise shown.

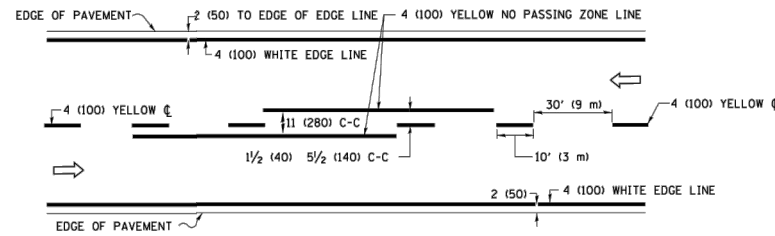
FILE NAME: P:\11\084\BID\NTEC\Illinois\gov\FWIDOT\Documents\DOT_Offices\District_3\Projects\Dissemination\CAD\Drawings\CAD\Drawings\TC10.dgn

USER NAME = footemj	DESIGNED - L.H.A.	REVISED - A. HOUSEH 10-15-96
PLOT SCALE = 50.0000' / in.	CHECKED -	REVISED - T. RAMMACHER 01-06-00
PLOT DATE = 3/4/2019	DATE - 06-89	REVISED - A. SCHUETZE 07-01-13
		REVISED - A. SCHUETZE 09-15-16

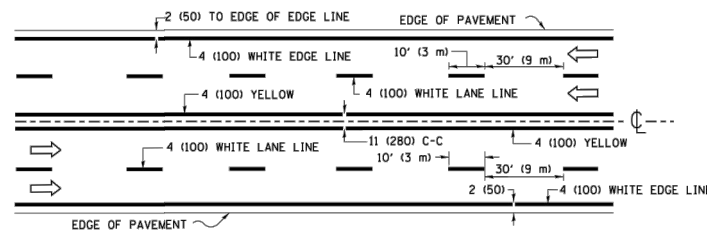
STATE OF ILLINOIS DEPARTMENT OF TRANSPORTATION				TRAFFIC CONTROL AND PROTECTION FOR SIDE ROADS, INTERSECTIONS, AND DRIVEWAYS				F.A.U. RTE.	SECTION	COUNTY	TOTAL SHEETS	SHEET NO.
				SCALE: NONE SHEET 1 OF 1 SHEETS STA. TO STA.				TC-10 CONTRACT NO.				
								ILLINOIS FED. AID PROJECT				

FILE NAME = 20R0277_01-DTLS-01 - TC10	USER NAME =	DESIGNED --	REVISED --
		CHECKED --	REVISED --
	PLOT SCALE =	DRAWN --	REVISED --
	PLOT DATE =	CHECKED --	REVISED --

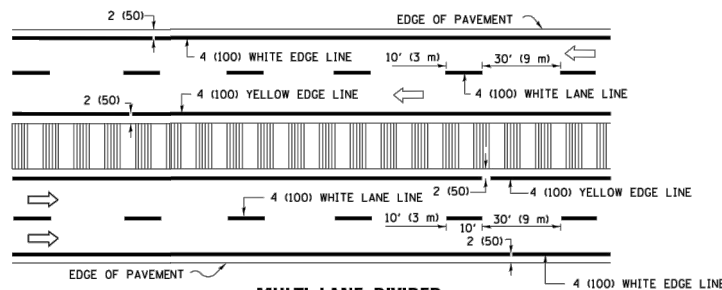
STATE OF ILLINOIS DEPARTMENT OF TRANSPORTATION				STATE STANDARDS				F.A.U. RTE.	SECTION	COUNTY	TOTAL SHEETS	SHEET NO.
				SCALE: SHEET NO. 18 OF 22 SHEETS STA. TO STA.				3752 22-00056-00 RS WILL 22 18				
								FED. ROAD DIST. NO. 1 ILLINOIS FED. AID PROJECT AH7P(516) CONTRACT NO. 61J97				



2-LANE ROADWAY

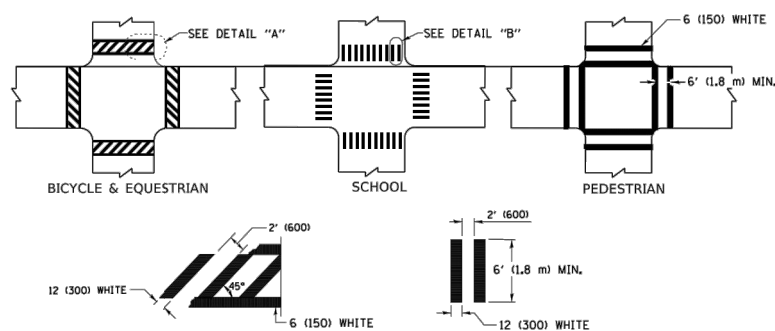


MULTI-LANE UNDIVIDED



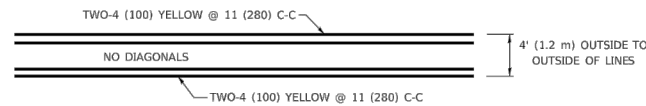
MULTI-LANE DIVIDED WITH MEDIAN

TYPICAL LANE AND EDGE LINE MARKING

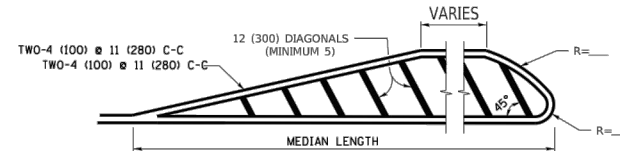


TYPICAL CROSSWALK MARKING

* MARKINGS SHALL BE INSTALLED PARALLEL TO THE CENTERLINE OF THE ROAD WHICH IT CROSSES



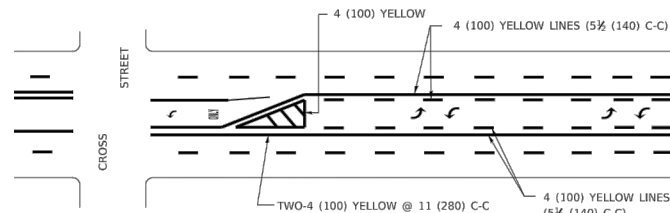
4' (1.2 m) WIDE MEDIANS ONLY



FOR MEDIAN LENGTHS WHERE DIAGONAL SPACING CANNOT BE ATTAINED, USE 5 (FIVE) EQUALLY SPACED DIAGONAL LINES.

DIAGONAL LINE SPACING: 50' (15 m) C-C (LESS THAN 30MPH (50 km/h))
75' (25 m) C-C 30MPH (50 km/h) TO 45MPH (70 km/h)
150' (45 m) C-C (MORE THAN 45MPH (70 km/h))

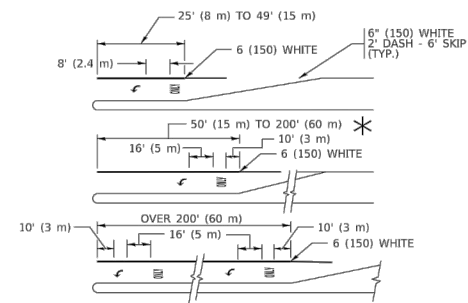
MEDIANS OVER 4' (1.2 m) WIDE



A MINIMUM OF TWO PAIRS OF TURN ARROWS SHALL BE USED, WHITE IN COLOR. ADDITIONAL PAIRS SHALL BE PLACED AT 200' (60 m) TO 300' (90 m) INTERVALS.

MEDIAN WITH TWO-WAY LEFT TURN LANE

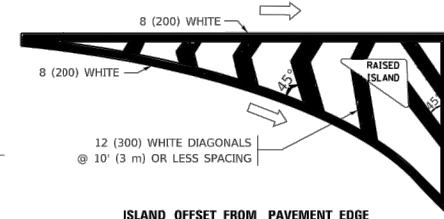
TYPICAL PAINTED MEDIAN MARKING



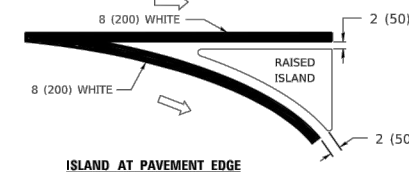
TYPICAL LEFT (OR RIGHT) TURN LANE

TYPICAL TURN LANE MARKING

FULL SIZE LETTERS 8" (2.4 m) AND ARROWS SHALL BE USED.
AREA = 15.6 SQ. FT. (1.5 m²) ONLY AREA = 20.8 SQ. FT. (1.9 m²)
* TURN LANES IN EXCESS OF 400' (120 m) IN LENGTH MAY HAVE AN ADDITIONAL SET OF ARROW - "ONLY" INSTALLED MIDWAY BETWEEN THE OTHER TWO SETS OF ARROW - "ONLY".

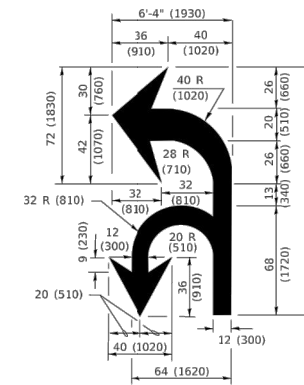


ISLAND OFFSET FROM PAVEMENT EDGE

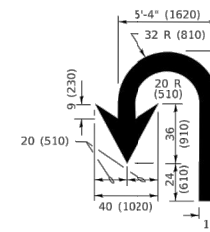


ISLAND AT PAVEMENT EDGE

TYPICAL ISLAND MARKING



COMBINATION LEFT AND U-TURN



U-TURN

LANE REDUCTION TRANSITION

* LANE REDUCTION ARROWS REQUIRED AT SPEEDS OF 45 MPH OR GREATER OR WHEN SPECIFIED IN PLANS.

D(FT)	SPEED LIMIT
345	30
425	35
500	40
580	45
665	50
750	55

TYPE OF MARKING	WIDTH OF LINE	PATTERN	COLOR	SPACING / REMARKS
CENTERLINE ON 2 LANE PAVEMENT	4 (100)	SKIP-DASH	YELLOW	10' (3 m) LINE WITH 30' (9 m) SPACE
CENTERLINE ON MULTI-LANE UNDIVIDED PAVEMENT	2 @ 4 (100)	SOLID	YELLOW	11 (280) C-C
NO PASSING ZONE LINES: FOR ONE DIRECTION FOR BOTH DIRECTIONS	4 (100) 2 @ 4 (100)	SOLID SOLID	YELLOW YELLOW	5 1/2 (140) C-C FROM SKIP-DASH CENTERLINE 11 (280) C-C OMIT SKIP-DASH CENTERLINE BETWEEN
LANE LINES	4 (100) 5 (125) ON FREEWAYS	SKIP-DASH SKIP-DASH	WHITE WHITE	10' (3 m) LINE WITH 30' (9 m) SPACE
DOTTED LINES (EXTENSIONS OF CENTER, LANE OR TURN LANE MARKINGS)	SAME AS LINE BEING EXTENDED	SKIP-DASH	SAME AS LINE BEING EXTENDED	2' (600) LINE WITH 6' (1.8 m) SPACE
EDGE LINES	4 (100)	SOLID	YELLOW-LEFT WHITE-RIGHT	OUTLINE MEDIANS IN YELLOW
TURN LANE MARKINGS	6 (150) LINE; FULL SIZE LETTERS & SYMBOLS (8" (2.4m))	SOLID	WHITE	SEE TYPICAL TURN LANE MARKING DETAIL
TWO WAY LEFT TURN MARKING	2 @ 4 (100) EACH DIRECTION 8" (2.4m) LEFT ARROW	SKIP-DASH AND SOLID IN PAIRS	YELLOW WHITE	10' (3 m) LINE WITH 30' (9 m) SPACE FOR SKIP-DASH; 5 1/2 (140) C-C BETWEEN SOLID LINE AND SKIP-DASH LINE SEE TYPICAL TWO-WAY LEFT TURN MARKING DETAIL
CROSSWALK LINES (PEDESTRIAN) A. DIAGONALS (BIKE & EQUESTRIAN) B. LONGITUDINAL BARS (SCHOOL)	2 @ 6 (150) 12 (300) @ 45° 12 (300) @ 90°	SOLID SOLID SOLID	WHITE WHITE WHITE	NOT LESS THAN 6' (1.8 m) APART 2' (600) APART 2' (600) APART SEE TYPICAL CROSSWALK MARKING DETAILS.
STOP LINES	24 (600)	SOLID	WHITE	PLACE 4' (1.2 m) IN ADVANCE OF AND PARALLEL TO CROSSWALK, IF PRESENT. OTHERWISE, PLACE AT DESIRED STOPPING POINT. PARALLEL TO CROSSROAD CENTERLINE, WHERE POSSIBLE
PAINTED MEDIANS	2 @ 4 (100) WITH 12 (300) DIAGONALS @ 45° NO DIAGONALS USED FOR 4' (1.2 m) WIDE MEDIANS	SOLID	YELLOW: TWO WAY TRAFFIC WHITE: ONE WAY TRAFFIC	11 (280) C-C FOR THE DOUBLE LINE SEE TYPICAL PAINTED MEDIAN MARKING.
GORE MARKING AND CHANNELIZING LINES	8 (200) WITH 12 (300) DIAGONALS @ 45°	SOLID	WHITE	DIAGONALS: 15' (4.5 m) C-C (LESS THAN 30MPH (50 km/h)) 20' (6 m) C-C 30MPH (50 km/h) TO 45MPH (70 km/h) 30' (9 m) C-C (OVER 45MPH (70 km/h))
RAILROAD CROSSING	24 (600) TRANSVERSE LINES; "RR" IS 6" (1.8 m) LETTERS; 16 (400) LINE FOR "X"	SOLID	WHITE	SEE STATE STANDARD 780001 AREA OF: "R"=3.6 SQ. FT. (0.33 m ²) EACH "X"=54.0 SQ. FT. (5.0 m ²)
SHOULDER DIAGONALS (REQUIRED FOR SHOULDERS > 8')	12 (300) @ 45°	SOLID	WHITE - RIGHT YELLOW - LEFT	50' (15 m) C-C (LESS THAN 30MPH (50 km/h)) 75' (25 m) C-C (30 MPH (50 km/h) TO 45MPH (70 km/h)) 150' (45 m) C-C (OVER 45MPH (70 km/h))
U TURN ARROW	SEE DETAIL	SOLID	WHITE	16.3 SF
2 ARROW COMBINATION LEFT AND U TURN	SEE DETAIL	SOLID	WHITE	30.4 SF

FOR FURTHER DETAILS ON PAVEMENT MARKING REFER TO STANDARD SPECIFICATIONS FOR ROAD AND BRIDGE CONSTRUCTION AND STATE STANDARD 780001.

All dimensions are in inches (millimeters) unless otherwise shown.

USER NAME = footemj	DESIGNED - EVERS	REVISED - C. JUCIUS 09-09-09	STATE OF ILLINOIS DEPARTMENT OF TRANSPORTATION	DISTRICT ONE TYPICAL PAVEMENT MARKINGS	F.A. RTE.	SECTION	COUNTY	TOTAL SHEETS	SHEET NO.	
PLOT SCALE = 50.0000' / in.	CHECKED -	REVISED - C. JUCIUS 07-01-13			TC-13					
PLOT DATE = 3/4/2019	DATE - 03-19-90	REVISED - C. JUCIUS 12-21-15			CONTRACT NO.					
		REVISED - C. JUCIUS 04-12-16			ILLINOIS FED. AID PROJECT					

FILE NAME = 20R0277_01-DTSL-01 - TC13

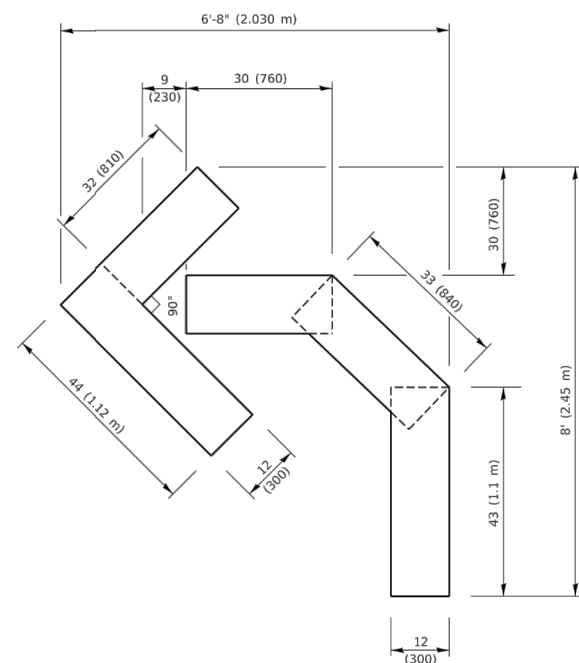
USER NAME =	DESIGNED -	REVISED -
PLOT SCALE =	CHECKED -	REVISED -
PLOT DATE =	DRAWN -	REVISED -
	CHECKED -	REVISED -

STATE OF ILLINOIS
DEPARTMENT OF TRANSPORTATION

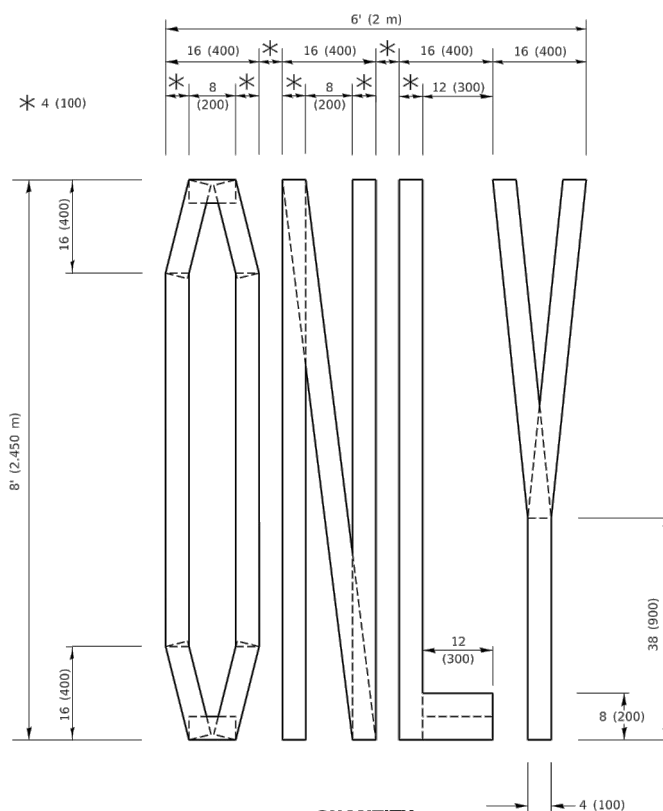
SCALE:	SHEET NO. 19 OF 22 SHEETS	STA.	TO STA.
--------	---------------------------	------	---------

STATE STANDARDS

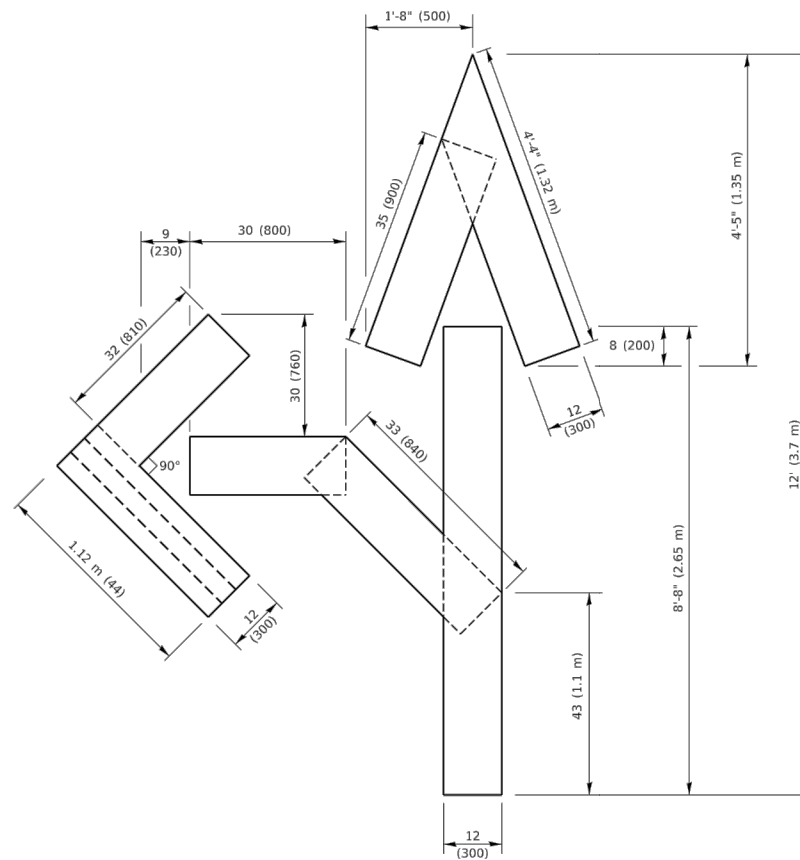
F.A.U. RTE.	SECTION	COUNTY	TOTAL SHEETS	SHEET NO.
3752	22-00056-00 RS	WILL	22	19
CONTRACT NO. 61J97				
FED. ROAD DIST. NO. 1	ILLINOIS	FED. AID PROJECT	AH7P(516)	



QUANTITY
 4 (100) LINE = 45.5 ft. (13.9 m)
 15.2 sq. ft. (1.41 sq. m)

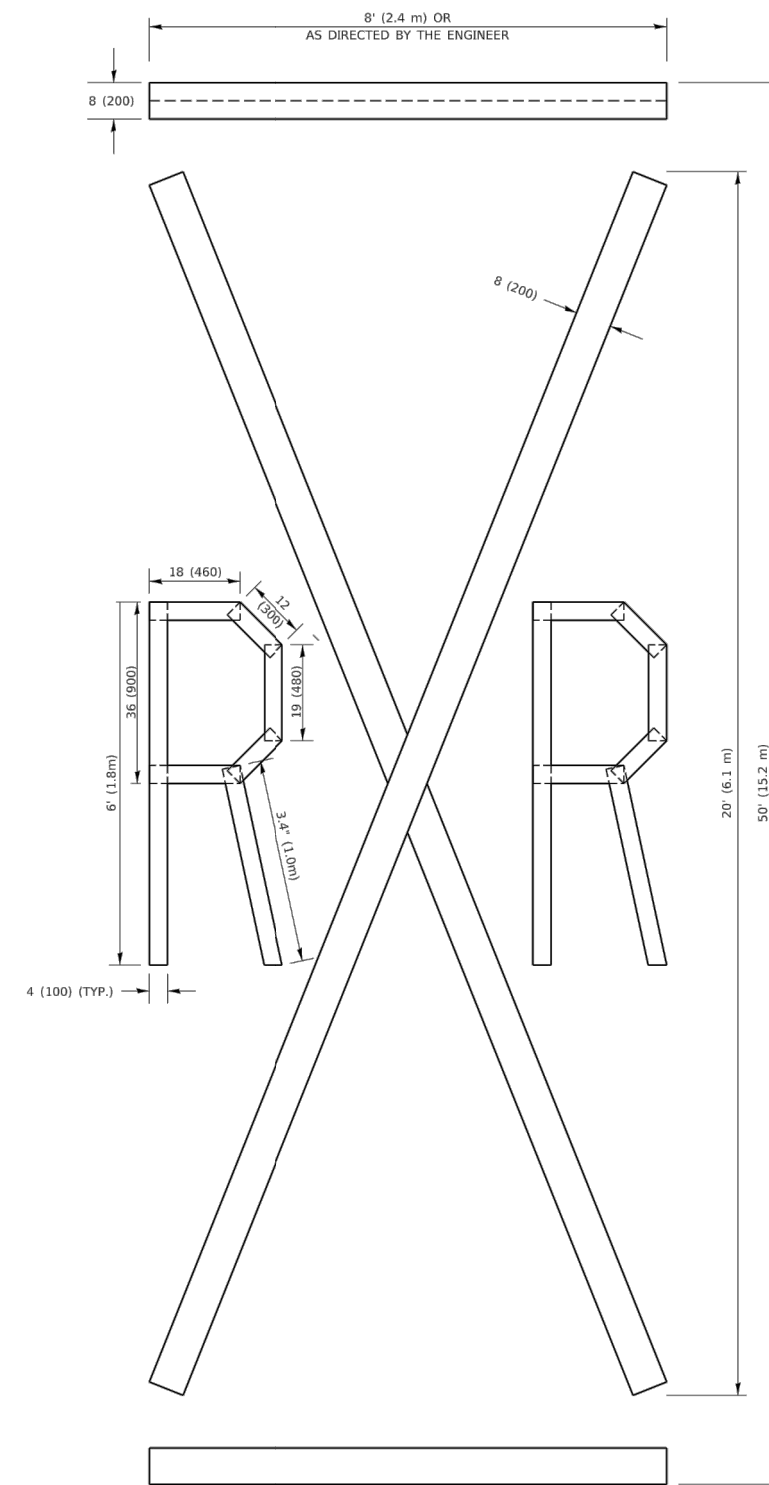


QUANTITY
 4 (100) LINE = 64.1 ft. (19.5 m)
 21.4 sq. ft. (1.99 sq. m)



QUANTITY
 4 (100) LINE = 82.5 ft. (25.1 m)
 27.5 sq. ft. (2.53 sq. m)

NOTE:
 ALL QUANTITIES OF PLACEMENT ARE REPRESENTED
 IN LINEAR FEET OF 4" LINES TO MATCH THE
 4" TEMPORARY TAPE PAY ITEM AND REPRESENTS
 THE TOTAL QUANTITY OF 4" TAPE REQUIRED.



QUANTITY
 4 (100) LINE = 225.9 ft. (68.9 m)
 75.3 sq. ft. (6.99 sq. m)

All dimensions are in inches (millimeters)
 unless otherwise shown.

FILE NAME: P:\A\1084E\BID\NTEC\Illinois.gov\PI\DOT\Documents\DOT_Offices\District_1\Projects\DSHS\0224\CAD\Drawings\CAD\Drawings\TC16.dgn

USER NAME = footemj	DESIGNED -	REVISED - T. RAMMACHER 03-02-98
PLOT SCALE = 50.0068 ' / in.	DRAWN -	REVISED - E. GOMEZ 08-28-00
PLOT DATE = 3/4/2019	CHECKED -	REVISED - E. GOMEZ 08-28-00
	DATE - 09-18-94	REVISED - A. SCHUETZE 09-15-16

**STATE OF ILLINOIS
 DEPARTMENT OF TRANSPORTATION**

SHORT TERM PAVEMENT MARKING LETTERS AND SYMBOLS

SCALE: NONE SHEET 1 OF 1 SHEETS STA. TO STA.

F.A.U. RTE.	SECTION	COUNTY	TOTAL SHEETS	SHEET NO.
	TC-16			
ILLINOIS FED. AID PROJECT			CONTRACT NO.	

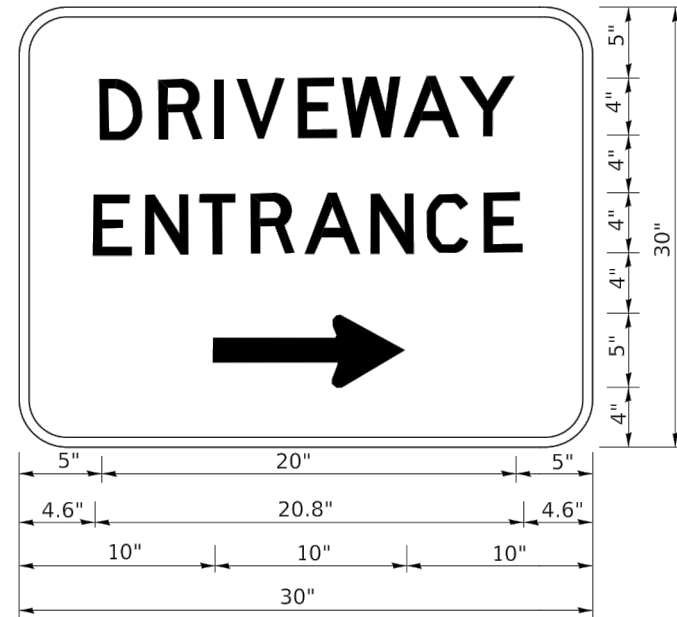
FILE NAME = 20R0277_01-DTLS-01 - TC16

USER NAME =	DESIGNED --	REVISED --
	CHECKED --	REVISED --
PLOT SCALE =	DRAWN --	REVISED --
PLOT DATE =	CHECKED --	REVISED --

**STATE OF ILLINOIS
 DEPARTMENT OF TRANSPORTATION**

STATE STANDARDS
 SCALE: SHEET NO. 20 OF 22 SHEETS STA. TO STA.

F.A.U. RTE.	SECTION	COUNTY	TOTAL SHEETS	SHEET NO.
3752	22-00056-00 RS	WILL	22	20
FED. ROAD DIST. NO. 1 ILLINOIS FED. AID PROJECT AH7P(516)			CONTRACT NO. 61J97	



3.0" RADIUS, 0.5" BORDER, WHITE ON GREEN; REFLECTORIZED
 "DRIVEWAY" D; "ENTRANCE" D; STANDARD ARROW CUSTOM 12.0" x 5.0"

NOTES:

1. HALF OF THE SIGNS WILL REQUIRE A LEFT HAND FACING ARROW.
2. TWO SIGNS SHALL BE USED AT EACH COMMERCIAL ENTRANCE PLACED BACK-TO-BACK: ONE WITH A RIGHT HAND ARROW (SHOWN) SHALL BE PLACED ON THE NEAR RIGHT SIDE THE DRIVEWAY AND ONE WITH A LEFT HAND ARROW SHALL BE PLACED ON THE FAR LEFT SIDE OF THE DRIVEWAY.
3. SIGNS TO BE PAID FOR AS ITEM "TEMPORARY INFORMATION SIGNING".

FILE NAME: p:\planningroom.dst\illinois.gov\PI\DOT\Documents\DOT_Offices\District_1\Projects\Dis562234\CAD\Day\CA\Sheet26.dgn

USER NAME = feysa	DESIGNED -	REVISED - C. JUCIUS 02-15-07
	DRAWN -	REVISED -
PLOT SCALE = 50.0000' / in.	CHECKED -	REVISED -
PLOT DATE = 8/6/2021	DATE -	REVISED -

**STATE OF ILLINOIS
DEPARTMENT OF TRANSPORTATION**

DRIVEWAY ENTRANCE SIGNING

F.A. RTE.	SECTION	COUNTY	TOTAL SHEETS	SHEET NO.
TC-26		CONTRACT NO.		
ILLINOIS FED. AID PROJECT				

SCALE: NONE SHEET 1 OF 1 SHEETS STA. TO STA.

FILE NAME = 20R0277_01-DTLS-01 - TC26

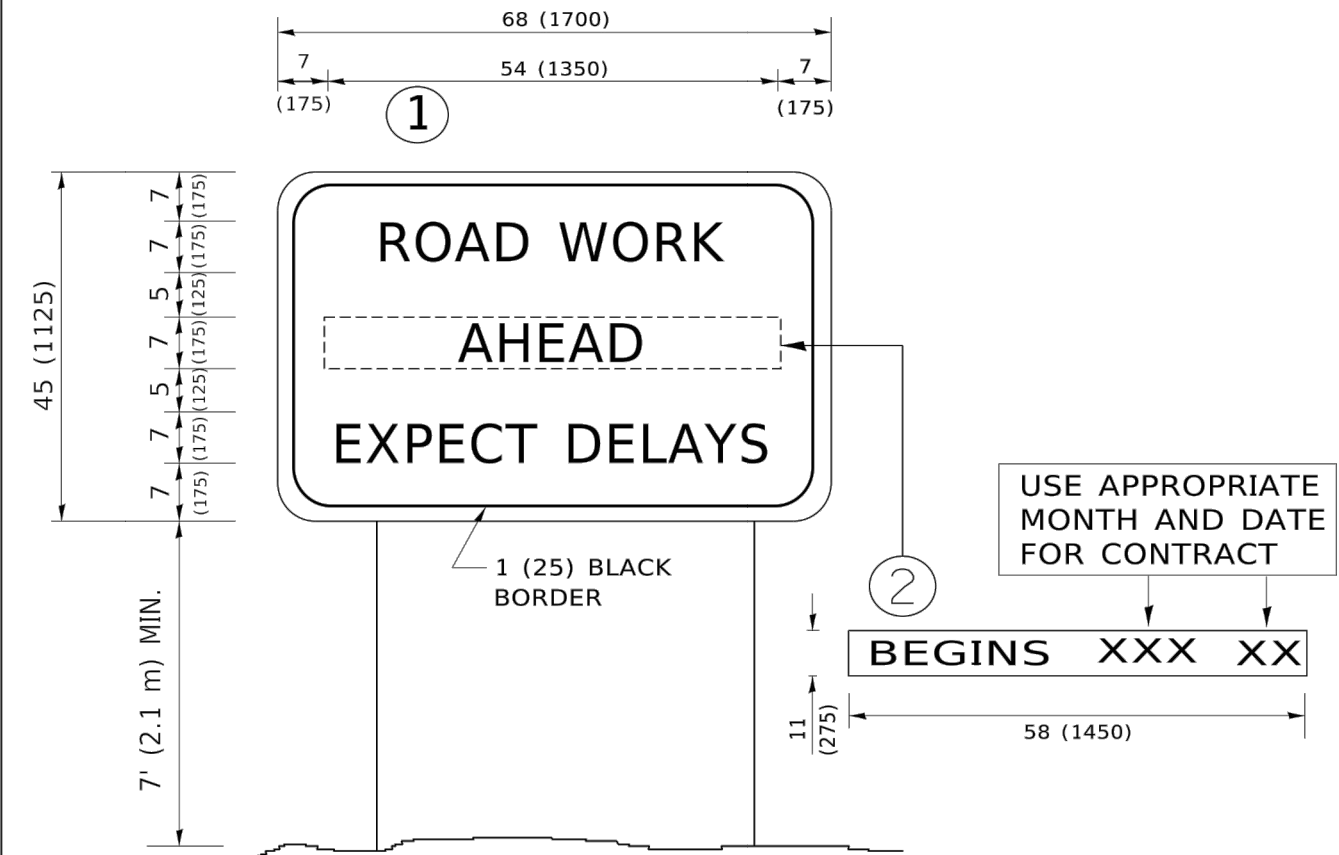
USER NAME =	DESIGNED --	REVISED --
	CHECKED --	REVISED --
PLOT SCALE =	DRAWN --	REVISED --
PLOT DATE =	CHECKED --	REVISED --

**STATE OF ILLINOIS
DEPARTMENT OF TRANSPORTATION**

STATE STANDARDS

F.A.U RTE.	SECTION	COUNTY	TOTAL SHEETS	SHEET NO.
3752	22-00056-00 RS	WILL	22	21
			CONTRACT NO. 61J97	
FED. ROAD DIST. NO. 1 ILLINOIS FED. AID PROJECT AH7P(516)				

SCALE: SHEET NO. 21 OF 22 SHEETS STA. TO STA.



NOTES:

1. USE BLACK LETTERING ON ORANGE BACKGROUND.
2. ERECT SIGNS IN ADVANCE OF THE LOCATION FOR THE "ROAD CONSTRUCTION AHEAD" SIGN AT LOCATIONS AS DIRECTED BY THE ENGINEER.
3. ERECT SIGN ① WITH INSTALLED PANEL ② ONE WEEK PRIOR TO THE START OF CONSTRUCTION.
4. REMOVE PANEL ② SOON AFTER THE START OF CONSTRUCTION.
5. SEE SPECIAL PROVISION FOR "TEMPORARY INFORMATION SIGNING" FOR ADDITIONAL INFORMATION.
6. ONE SIGN ASSEMBLY EQUALS 25.70 SQ. FT. (2.3 SQ. M.)
7. SHALL BE PAID FOR AS TEMPORARY INFORMATION SIGNING.

ALL DIMENSIONS ARE IN INCHES (MILLIMETERS) UNLESS OTHERWISE SHOWN.

FILE NAME: D:\IL\BIBID\BIBID\TEG\Illinois.gov\PWIDOT\Documents\DOT_Offices\District_1\Projects\Dist582234\CAD\Draws\CAD\Draws\22.dgn

USER NAME = footemj	DESIGNED -	REVISED - R. MIRS 09-15-97
	DRAWN -	REVISED - R. MIRS 12-11-97
PLOT SCALE = 50.0000' / in.	CHECKED -	REVISED - T. RAMMACHER 02-02-99
PLOT DATE = 3/4/2019	DATE -	REVISED - C. JUCIUS 01-31-07

**STATE OF ILLINOIS
DEPARTMENT OF TRANSPORTATION**

**ARTERIAL ROAD
INFORMATION SIGN**

SCALE: NONE SHEET 1 OF 1 SHEETS STA. TO STA.

F.A.U. RTE.	SECTION	COUNTY	TOTAL SHEETS	SHEET NO.
TC-22		CONTRACT NO.		
ILLINOIS FED. AID PROJECT				

FILE NAME = 20R0277_01-DTLS-01 - TC22	USER NAME =	DESIGNED --	REVISED --
		CHECKED --	REVISED --
	PLOT SCALE =	DRAWN --	REVISED --
	PLOT DATE =	CHECKED --	REVISED --

**STATE OF ILLINOIS
DEPARTMENT OF TRANSPORTATION**

STATE STANDARDS

SCALE: SHEET NO. 22 OF 22 SHEETS STA. TO STA.

F.A.U. RTE.	SECTION	COUNTY	TOTAL SHEETS	SHEET NO.
3752	22-00056-00 RS	WILL	22	22
		CONTRACT NO. 61J97		
FED. ROAD DIST. NO. 1 ILLINOIS FED. AID PROJECT AH7P(516)				