

STATE OF ILLINOIS
DEPARTMENT OF TRANSPORTATION

F.A.P. RTE.	SECTION	COUNTY	TOTAL SHEETS	SHEET NO.
332	D7 BRIDGE REPAIRS 2024-6	WABASH	23	1
		ILLINOIS	CONTRACT NO. 74B32	

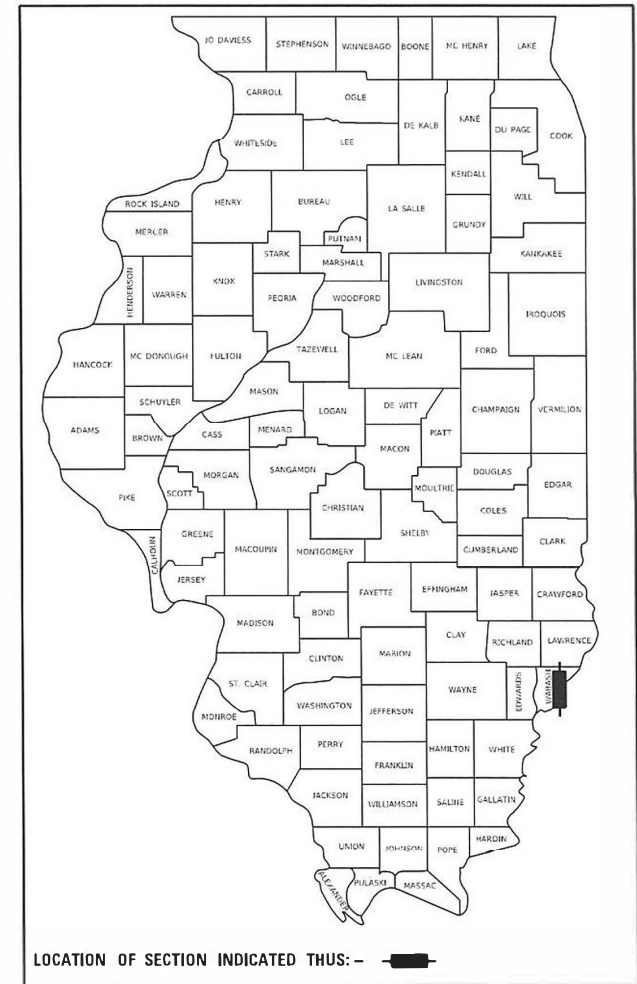
D-97-053-22

FOR INDEX OF SHEETS, SEE SHEET NO. 2

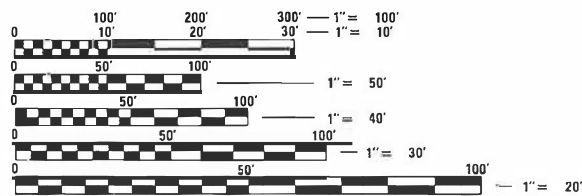
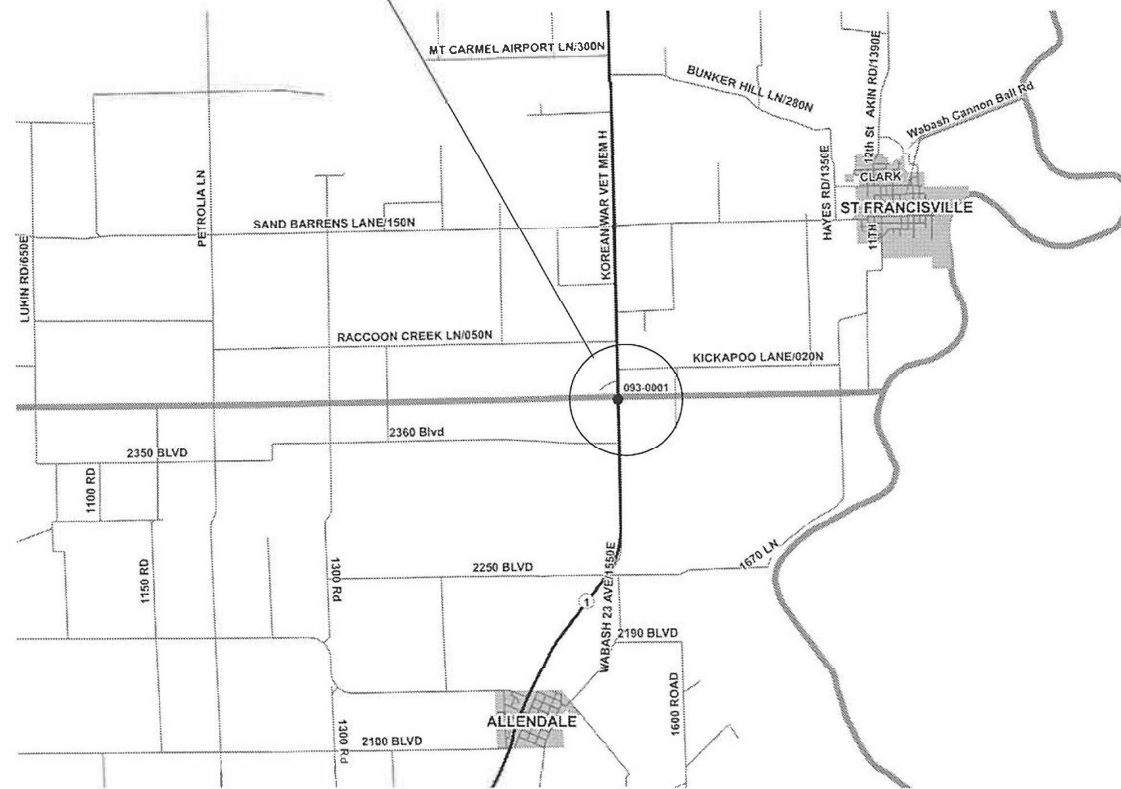
ADT 2000 (YEAR 2021)

PROPOSED HIGHWAY PLANS

FAP ROUTE 332 (IL 1)
SECTION D7 BRIDGE REPAIRS 2024-6
PROJECT NHPP-MIC5(135)
BRIDGE REPAIRS
WABASH COUNTY
C-97-100-22



STRUCTURE # 093-0001
STATION 601+85



FULL SIZE PLANS HAVE BEEN PREPARED USING STANDARD ENGINEERING SCALES. REDUCED SIZED PLANS WILL NOT CONFORM TO STANDARD SCALES. IN MAKING MEASUREMENTS ON REDUCED PLANS, THE ABOVE SCALES MAY BE USED.

J.U.L.I.E.
JOINT UTILITY LOCATION INFORMATION FOR EXCAVATORS
1-800-892-0123
OR 811

PROJECT ENGINEER: BRIAN LEWIS
PROJECT MANAGER: MYRA OLTMAN

CONTRACT NO. 74B32

GROSS LENGTH = 898 FT. = 0.17 MILE
NET LENGTH = 190-1" FT. = 0.035 MILE

STATE OF ILLINOIS
DEPARTMENT OF TRANSPORTATION

SUBMITTED October 10, 2023
Jeffrey P. Myrsky
REGIONAL ENGINEER
December 8, 2023
Steph A. Etk
ENGINEER OF DESIGN AND ENVIRONMENT
December 8, 2023
Steph M. Smith
DIRECTOR OF HIGHWAYS PROJECT IMPLEMENTATION

PRINTED BY THE AUTHORITY
OF THE STATE OF ILLINOIS

GENERAL NOTES

THE WORK INCLUDED IN THIS SECTION CONSISTS OF BRIDGE REPAIRS ON #093-0001, ON FAP ROUTE 332 (IL ROUTE 1) INCLUDING REMOVAL OF EXISTING JOINTS, CONSTRUCTING STRIP SEAL EXPANSION JOINT, BRIDGE DECK SCARIFICATION - 3/4", DECK PATCHING, BRIDGE DECK FLY ASH OR GGBF SLAG CONCRETE OVERLAY, 2 1/2", AND DIAMOND GRINDING AND HOT-MIX ASPHALT SURFACE COURSE. CONSTRUCTION OF BASE COURSE WIDENING WILL BE REQUIRED AND ANY OTHER WORK REQUIRED TO COMPLETE THE CONSTRUCTION. STAGE CONSTRUCTION WILL BE UTILIZED.

THE TOTAL QUANTITY OF PAINT PAVEMENT MARKING - LINE 4" CALCULATED CONSISTS OF 180 FEET OF YELLOW AND 1796 FEET OF WHITE.

INDEX OF SHEETS

SHEET NO.	TITLE
1	COVER SHEET
2	GENERAL NOTES, INDEX OF SHEETS
3-4	SUMMARY OF QUANTITIES
5	SCHEDULE OF QUANTITIES
6	TRANSITION DETAIL
7-11	STAGE CONSTRUCTION DETAILS
12-19	BRIDGE REPAIR PLANS
20-23	PAVEMENT MARKING DETAILS

THE FOLLOWING MIXTURE REQUIREMENTS ARE APPLICABLE TO THIS PROJECT:

LOCATION(S)	MIXTURE USE(S)	PG	DESIGN AIR VOIDS	MIXTURE COMPOSITION	FRICTION AGGREGATE	MIXTURE WEIGHT	QUALITY MANAGEMENT PROGRAM	SUBLOT SIZE	MATERIAL TRANSFER DEVICE (REQUIRED?)
MAINLINE	HMA SURFACE COURSE, IL-9.5, MIX "C", N70 (1.75")	PG 64-22	4.0% @ N=70	IL-9.5	MIXTURE C	N70	QC/QA	3000	N/A

THE FOLLOWING STANDARDS ARE A PART OF THESE PLANS AND ARE INCLUDED FOLLOWING THE LAST NUMBERED SHEET OF THE PLANS.

- 000001-08 STANDARD SYMBOLS, ABBREVIATIONS, AND PATTERNS
- 001001-02 AREAS OF REINFORCEMENT BARS
- 001006 DECIMAL OF AN INCH AND OF A FOOT
- 420001-10 PAVEMENT JOINTS
- 701001-02 OFF-ROAD OPERATIONS, 2L, 2W, MORE THAN 15' AWAY
- 701006-05 OFF-ROAD OPERATIONS, 2L, 2W, 15' TO 24" FROM PAVEMENT EDGE
- 701201-05 LANE CLOSURE, 2L, 2W, DAY ONLY FOR SPEEDS \geq 45 MPH
- 701301-04 LANE CLOSURE, 2L, 2W, SHORT TIME OPERATIONS
- 701311-03 LANE CLOSURE, 2L, 2W, SLOW MOVING OPERATIONS DAY ONLY
- 701321-18 LANE CLOSURE, 2L, 2W, BRIDGE REPAIR WITH BARRIER
- 701326-04 LANE CLOSURE, 2L, 2W, PAVEMENT WIDENING, FOR SPEEDS \geq 45 MPH
- 701901-09 TRAFFIC CONTROL DEVICES
- 704001-08 TEMPORARY CONCRETE BARRIER
- 780001-05 TYPICAL PAVEMENT MARKINGS
- 782006-01 GUARDRAIL AND BARRIER WALL REFLECTOR MOUNTING DETAILS

THE FOLLOWING MIXTURE REQUIREMENTS ARE APPLICABLE TO THIS PROJECT:

LOCATION(S)	MIXTURE USE(S)	PG	DESIGN AIR VOIDS	MIXTURE COMPOSITION	FRICTION AGGREGATE	MIXTURE WEIGHT	QUALITY MANAGEMENT PROGRAM	SUBLOT SIZE	MATERIAL TRANSFER DEVICE (REQUIRED?)
MAINLINE	HMA SURFACE COURSE, IL-9.5, MIX "C", N70 (1.75")	PG 64-22	4.0% @ N=70	IL-9.5	MIXTURE C	N70	QC/QA	3000	N/A
WIDENING	HMA BINDER COURSE, IL-19.0, N70	PG 64-22	4.0% @ N=70	IL-19.0	N/A	N70	QC/QA	3000	N/A

REV. - MS

MODEL: Default
 FILE NAME: \\wildcat-pk-bentley.com\PWD01\Documents\DOT_Offices\District_7\Projects\74832\CADD\Drawings\Drawings\74832-rht-gemnote.dgn

USER NAME = jessica.hille	DESIGNED -	REVISED -	STATE OF ILLINOIS DEPARTMENT OF TRANSPORTATION	GENERAL NOTES, INDEX OF SHEETS HIGHWAY STANDARDS		F.A.P. RTE. 332	SECTION D7 BRIDGE REPAIRS 2024-6	COUNTY WABASH	TOTAL SHEETS 23	SHEET NO. 2	
PLOT SCALE = 100.0000' / in.	DRAWN -	REVISED -		SCALE:	SHEET OF SHEETS	STA. TO STA.	ILLINOIS FED. AID PROJECT				
PLOT DATE = 10/11/2023	CHECKED -	REVISED -									
	DATE -	REVISED -									

80% FED
20% STATE

80% FED
20% STATE

SUMMARY OF QUANTITIES			TOTAL QUANTITIES	CONSTRUCTION TYPE CODE		
CODE NO	ITEM	UNIT		0059		
35650500	BASE COURSE WIDENING 10"	SQ YD	412	412		
40600290	BITUMINOUS MATERIALS (TACK COAT)	POUND	288	288		
40600982	HOT-MIX ASPHALT SURFACE REMOVAL - BUTT JOINT	SQ YD	400	400		
40600990	TEMPORARY RAMP	SQ YD	27	27		
40604052	HOT-MIX ASPHALT SURFACE COURSE, IL-9.5, MIX "C", N70	TON	54	54		
44004250	PAVED SHOULDER REMOVAL	SQ YD	142	142		
50102400	CONCRETE REMOVAL	CU YD	10	10		
50300255	CONCRETE SUPERSTRUCTURE	CU YD	10.3	10.3		
50300300	PROTECTIVE COAT	SQ YD	763	763		
50800205	REINFORCEMENT BARS, EPOXY COATED	POUND	1300	1300		
50800515	BAR SPLICERS	EACH	24	24		
52000110	PREFORMED JOINT STRIP SEAL	FOOT	76	76		
67000400	ENGINEER'S FIELD OFFICE, TYPE A	CAL MO	5	5		
67100100	MOBILIZATION	L SUM	1	1		

SUMMARY OF QUANTITIES			TOTAL QUANTITIES	CONSTRUCTION TYPE CODE		
CODE NO	ITEM	UNIT		0059		
70100405	TRAFFIC CONTROL AND PROTECTION, STANDARD 701321	EACH	1	1		
70100450	TRAFFIC CONTROL AND PROTECTION, STANDARD 701201	L SUM	1	1		
70100500	TRAFFIC CONTROL AND PROTECTION, STANDARD 701326	L SUM	1	1		
70106500	TEMPORARY BRIDGE TRAFFIC SIGNALS	EACH	1	1		
70107005	PAVEMENT MARKING BLACKOUT TAPE, 5"	FOOT	1059	1059		
70107025	CHANGEABLE MESSAGE SIGN	CAL DA	28	28		
70300100	SHORT TERM PAVEMENT MARKING	FOOT	79	79		
70300150	SHORT TERM PAVEMENT MARKING REMOVAL	SO FT	467	467		
70300221	TEMPORARY PAVEMENT MARKING - LINE 4"- PAINT	FOOT	1976	1976		
70400100	TEMPORARY CONCRETE BARRIER	FOOT	512.5	512.5		
70400200	RELOCATE TEMPORARY CONCRETE BARRIER	FOOT	500	500		
70600250	IMPACT ATTENUATORS, TEMPORARY (NON-REDIRECTIVE), TEST LEVEL 3	EACH	2	2		
70600350	IMPACT ATTENUATORS, RELOCATE (NON-REDIRECTIVE), TEST LEVEL 3	EACH	2	2		

REV. - MS

MODEL: Default
 FILE: M:\MSA\p\w\ludat-cw\benley.com\PROJECTS\DOT\Office\Dir\c:\p\projects\74B32\CADD\data\CAD\sheet\74B32-sht-500.dgn

USER NAME = jessica.hille	DESIGNED -	REVISED -
	DRAWN -	REVISED -
PLOT SCALE = 100.0000' / in.	CHECKED -	REVISED -
PLOT DATE = 10/11/2023	DATE -	REVISED -

**STATE OF ILLINOIS
DEPARTMENT OF TRANSPORTATION**

SUMMARY OF QUANTITIES

SCALE: SHEET OF SHEETS STA. TO STA.

F.A.P. RTE.	SECTION	COUNTY	TOTAL SHEETS	SHEET NO.
332	D7 BRIDGE REPAIRS 2024-6	WABASH	23	3
CONTRACT NO. 74B32			ILLINOIS FED. AID PROJECT	

TRAFFIC CONTROL SCHEDULE								
	IMPACT ATTENUATORS, TEMPORARY (NON-REDIRECTIVE) TEST LEVEL 3	RELOCATE IMPACT ATTENUATORS, TEMPORARY (NON-REDIRECTIVE), TEST LEVEL 3	TEMPORARY CONCRETE BARRIER	RELOCATE TEMPORARY CONCRETE BARRIER	TRAFFIC CONTROL AND PROTECTION, STANDARD 701321	TRAFFIC CONTROL AND PROTECTION, STANDARD 701326	TEMPORARY BRIDGE TRAFFIC SIGNALS	PAVEMENT MARKING BLACKOUT TAPE, 5"
	EACH	EACH	FOOT	FOOT	EACH	EACH	EACH	FEET
STRUCTURE 093-0001					1	1	1	
STAGE 1	2		512.5					661
STAGE 2		2		500.0				398
TOTALS	2	2	512.5	500.0	1	1	1	1059

PAVEMENT MARKING SCHEDULE SCHEDULE				
	TEMPORARY PAVEMENT MARKING - LINE 4"-PAINT	SHORT TERM PAVEMENT MARKING	SHORT TERM PAVEMENT MARKING REMOVAL	PAINT PAVEMENT MARKING - LINE 4"
	FOOT	FOOT	SQ FT	FOOT
STRUCTURE 093-0001	1976	79	467	1976
TOTALS	1976	79	467	1976

RESURFACING SCHEDULE							
				HOT-MIX ASPHALT SURFACE REMOVAL - BUTT JOINT	BITUMINOUS MATERIALS (TACK COAT)	HOT-MIX ASPHALT SURFACE COURSE, IL-9.5, MIX "C", N70	TEMPORARY RAMP
	LOCATION	STATION	TO	STATION	SQ YD	POUND	TONS
SOUTH END							
	IL ROUTE 1	600+10		600+90		144	27
		600+10		600+60	200		
NORTH END							
	IL Route 1	602+80		603+60		144	27
		600+10		600+60	200		
				TOTAL	400	288	54

PAVED SHOULDER REMOVAL						
	STATION	TO	STATION	LENGTH	WIDTH	SQ YD
LT	599+16		599+71	55	1.0	6.2
LT	599+71		600+60	89	3.0	29.7
RT	599+16		599+99	83	1.0	9.3
RT	599+99		600+60	61	3.0	20.4
LT	603+10		603+99	89	3.0	29.7
LT	603+99		604+75	76	1.0	8.5
RT	603+10		603+99	89	3.0	29.7
RT	603+99		604+75	76	1.0	8.5
				TOTAL		142.0

BASE COURSE WIDENING 10"						
	STATION	TO	STATION	LENGTH	WIDTH	SQ YD
LT	599+16		600+60	144	6.0	96
RT	599+16		600+60	144	6.0	96
LT	603+10		604+75	165	6.0	110
RT	603+10		604+75	165	6.0	110
				TOTAL		412

REV. - MS

MODEL: Default
FILE NAME: p:\w\dot\w\berley.com\FWIDDOT\Documents\DOT_Offices\District_7\Projects\74832\CADD\318\CD\Sheets\074832-sf-sched.dwg.dgn

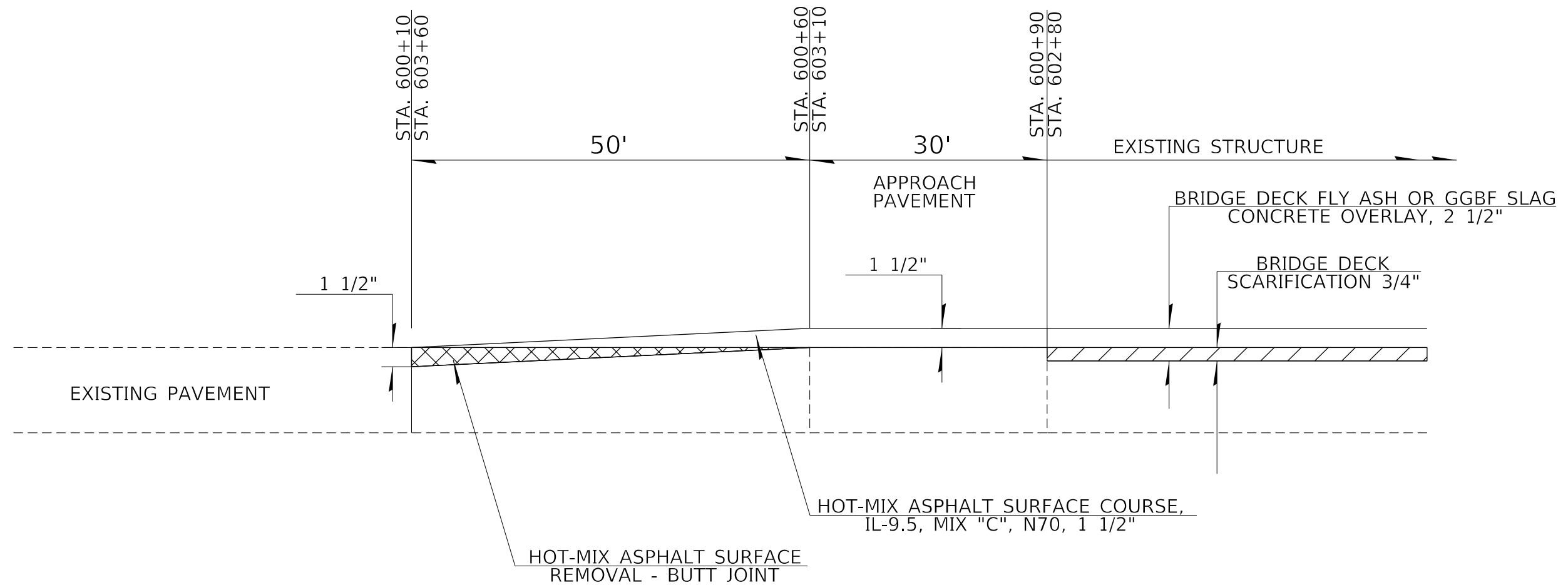
USER NAME = jessica.hille	DESIGNED -	REVISED -
	DRAWN -	REVISED -
PLOT SCALE = 100.0000' / in.	CHECKED -	REVISED -
PLOT DATE = 10/11/2023	DATE -	REVISED -

STATE OF ILLINOIS
DEPARTMENT OF TRANSPORTATION

SCHEDULE OF QUANTITIES

SCALE: SHEET OF SHEETS STA. TO STA.

F.A.P. RTE.	SECTION	COUNTY	TOTAL SHEETS	SHEET NO.
332	D7 BRIDGE REPAIRS 2024-6	WABASH	23	5
ILLINOIS FED. AID PROJECT			CONTRACT NO. 74832	



TRANSITION DETAIL

STATION 600+10 TO STATION 600+90
 STATION 602+80 TO STATION 603+60

NOTE:
 SEE SPECIAL PROVISIONS FOR
 TREATMENT OF JOINT AT THE
 END OF APPROACH PAVEMENT.

MODEL: Default
 FILE: \\malfp-pw\ultra-pw-bead\p\com\PIV\DOT\Documents\1\DOT Office\Director_7\Project\74832\CADD\DATA\CAD\Sheet\74832-she11a.dgn

USER NAME = jessica.hille	DESIGNED -	REVISED -
	DRAWN -	REVISED -
PLOT SCALE = 40,0000 * / in.	CHECKED -	REVISED -
PLOT DATE = 10/11/2023	DATE -	REVISED -

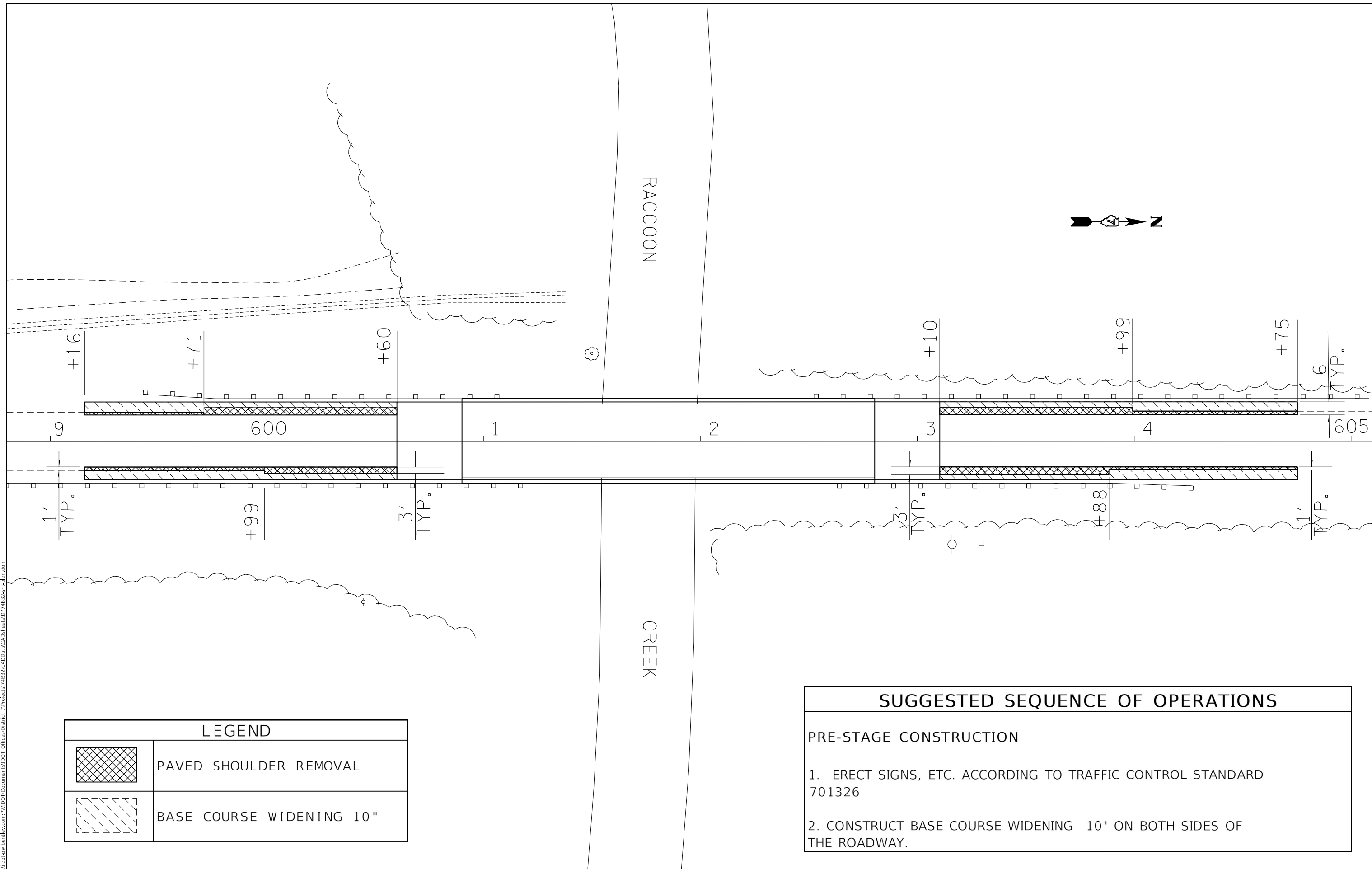
**STATE OF ILLINOIS
 DEPARTMENT OF TRANSPORTATION**

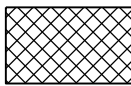

TRANSITION DETAIL

SCALE: SHEET OF SHEETS STA. TO STA.

F.A.P. RTE.	SECTION	COUNTY	TOTAL SHEETS	SHEET NO.
332	D7 BRIDGE REPAIRS 2024-6	WABASH	23	6
ILLINOIS FED. AID PROJECT			CONTRACT NO. 74832	

MODEL: Default
 FILE NAME: p:\project-aw-bee\paw.com\p\w\DOT\Documents\DOT Office\Director_7\Project\74832\CADD\DATA\CAD\Sheet\74832-she-4.dwg



LEGEND	
	PAVED SHOULDER REMOVAL
	BASE COURSE WIDENING 10"

SUGGESTED SEQUENCE OF OPERATIONS	
PRE-STAGE CONSTRUCTION	
1. ERECT SIGNS, ETC. ACCORDING TO TRAFFIC CONTROL STANDARD 701326	
2. CONSTRUCT BASE COURSE WIDENING 10" ON BOTH SIDES OF THE ROADWAY.	

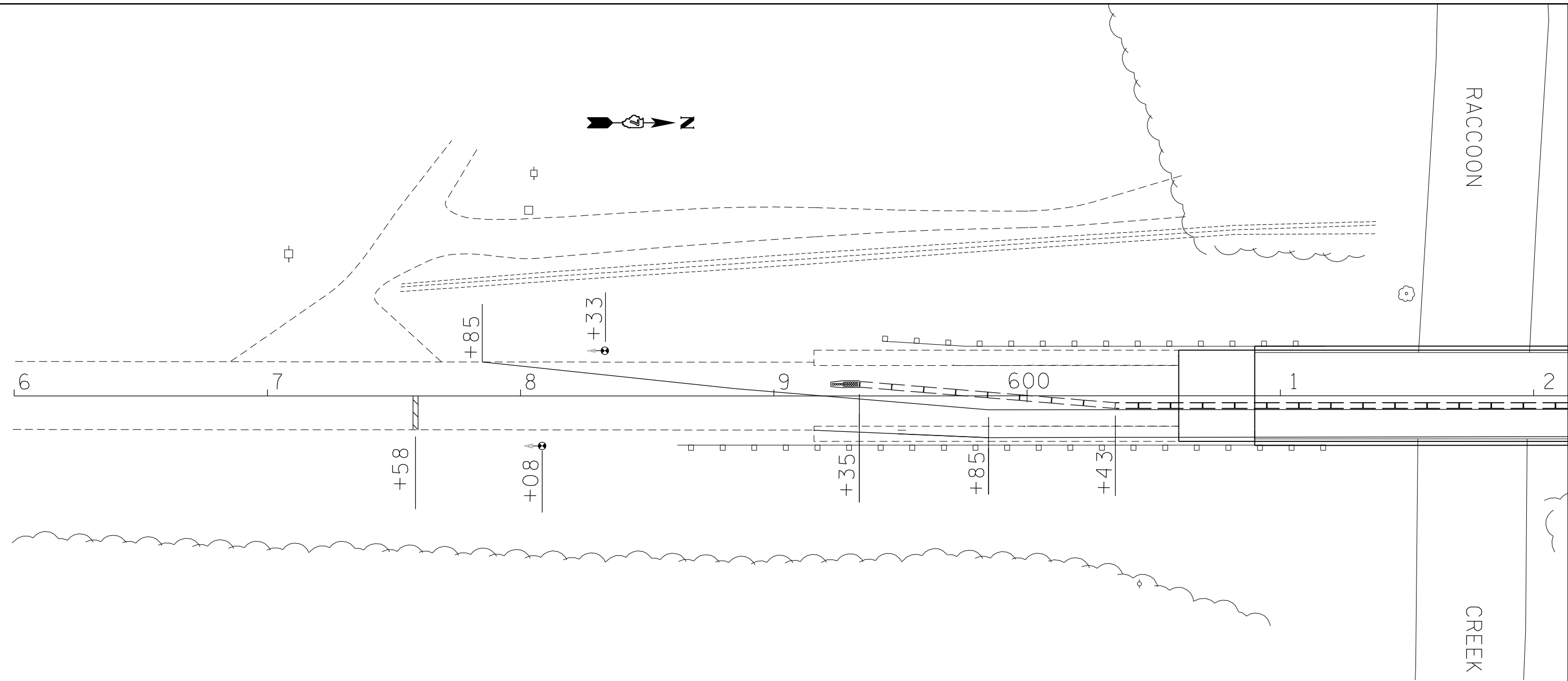
USER NAME = jessica.wille	DESIGNED -	REVISED -
PLOT SCALE = 40,0000 * / in.	DRAWN -	REVISED -
PLOT DATE = 10/20/2023	CHECKED -	REVISED -
	DATE -	REVISED -

STATE OF ILLINOIS
DEPARTMENT OF TRANSPORTATION

PRE-STAGE CONSTRUCTION			
SCALE:	SHEET	OF SHEETS	STA. TO STA.

F.A.P. RTE.	SECTION	COUNTY	TOTAL SHEETS	SHEET NO.
332	D7 BRIDGE REPAIRS 2024-6	WABASH	23	7
ILLINOIS FED. AID PROJECT			CONTRACT NO. 74832	

MODEL: Default
 FILE NAME: p:\project-aw-beadley.com\p\illdot\Documents\DOT Offices\Director_7\Project\74B32\CADD\DATA\CAD\Sheet\74B32-she11n.dgn



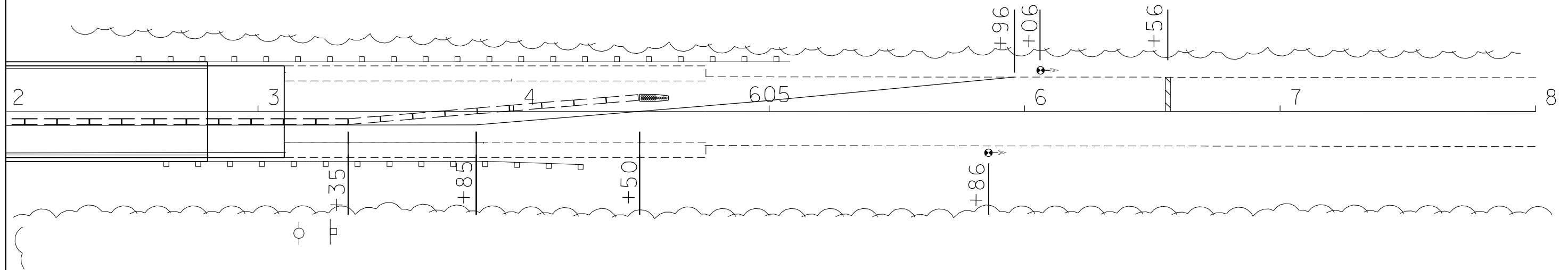
SUGGESTED SEQUENCE OF OPERATIONS

STAGE 1 CONSTRUCTION

1. ERECT SIGNS, TRAFFIC SIGNALS, ETC. ACCORDING TO TRAFFIC CONTROL STANDARD 701321 AND THE DETAILS IN THE PLANS.
2. PLACE TEMPORARY CONCRETE BARRIER ACCORDING TO TRAFFIC CONTROL STANDARD 701321.
3. CONSTRUCT ALL BRIDGE ITEMS FOR STAGE 1.

LEGEND	
TEMPORARY CONCRETE BARRIERS	□ □
TEMPORARY TRAFFIC SIGNALS	● →
IMPACT ATTENUATORS, TEMPORARY (NON- REDIRECTIVE), TEST LEVEL 3	▨
STOP BAR	▧

	USER NAME = jessica.hille	DESIGNED -	REVISED -	STATE OF ILLINOIS DEPARTMENT OF TRANSPORTATION	STAGE 1 CONSTRUCTION			F.A.P. RTE.	SECTION	COUNTY	TOTAL SHEETS	SHEET NO.
	PLOT SCALE = 40,0000 * / in.	CHECKED -	REVISED -		332	D7 BRIDGE REPAIRS 2024-6	WABASH	23	8			
PLOT DATE = 10/11/2023	DATE -	REVISED -		SCALE:	SHEET	OF	SHEETS	STA.	TO	STA.	ILLINOIS FED. AID PROJECT CONTRACT NO. 74B32	



LEGEND	
TEMPORARY CONCRETE BARRIERS	
TEMPORARY TRAFFIC SIGNALS	
IMPACT ATTENUATORS, TEMPORARY (NON- REDIRECTIVE), TEST LEVEL 3	
STOP BAR	

MODEL: Default
 FILE NAME: p:\ultra-cw-bea\paw.com\PIV\DOT\Documents\DOT Office\District 7\Projects\74B32\CADD\DATA\CAD\Sheet\74B32-she11a.dgn

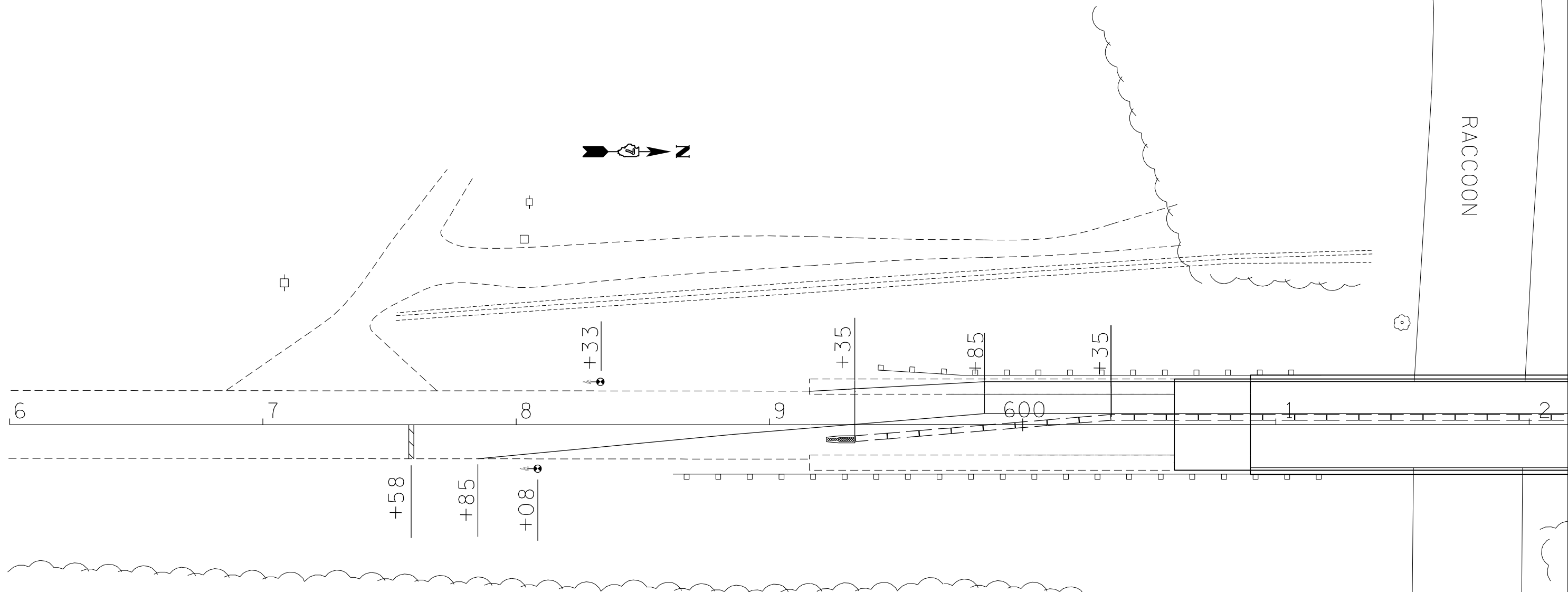
USER NAME = jessica.hille	DESIGNED -	REVISED -
	DRAWN -	REVISED -
PLOT SCALE = 40,0000 * / in.	CHECKED -	REVISED -
PLOT DATE = 10/11/2023	DATE -	REVISED -

STATE OF ILLINOIS
DEPARTMENT OF TRANSPORTATION

STAGE 1 CONSTRUCTION

SCALE: SHEET OF SHEETS STA. TO STA.

F.A.P. RTE.	SECTION	COUNTY	TOTAL SHEETS	SHEET NO.
332	D7 BRIDGE REPAIRS 2024-6	WABASH	23	9
ILLINOIS FED. AID PROJECT			CONTRACT NO. 74B32	



SUGGESTED SEQUENCE OF OPERATIONS

STAGE 2 CONSTRUCTION

1. RELOCATE TEMPORARY CONCRETE BARRIER ACCORDING TO TRAFFIC CONTROL STANDARD 701321.
2. CONSTRUCT ALL BRIDGE ITEMS FOR STAGE 2.
3. REMOVE TRAFFIC CONTROL STANDARD 701321 AND TRAFFIC SIGNALS.

POST-STAGE CONSTRUCTION

1. PLACE TRAFFIC CONTROL STANDARD 701201.
2. CONSTRUCT HOT-MIX ASPHALT SURFACE REMOVAL - BUTT JOINT AND HOT-MIX ASPHALT SURFACE COURSE, IL-9.5, MIX "C", N70.
3. PLACE TRAFFIC CONTROL STANDARD 701311 THEN CONSTRUCT PAVEMENT MARKING.

LEGEND

- TEMPORARY CONCRETE BARRIERS
- TEMPORARY TRAFFIC SIGNALS
- IMPACT ATTENUATORS, TEMPORARY (NON- REDIRECTIVE), TEST LEVEL 3
- STOP BAR

MODEL: Default
 FILE: \\na11e01-pw-beadefy.com\PI\DOT\Documents\DOT Office\Director_T\Projects\74B32\CADD\Drawings\74B32-sheets.dgn

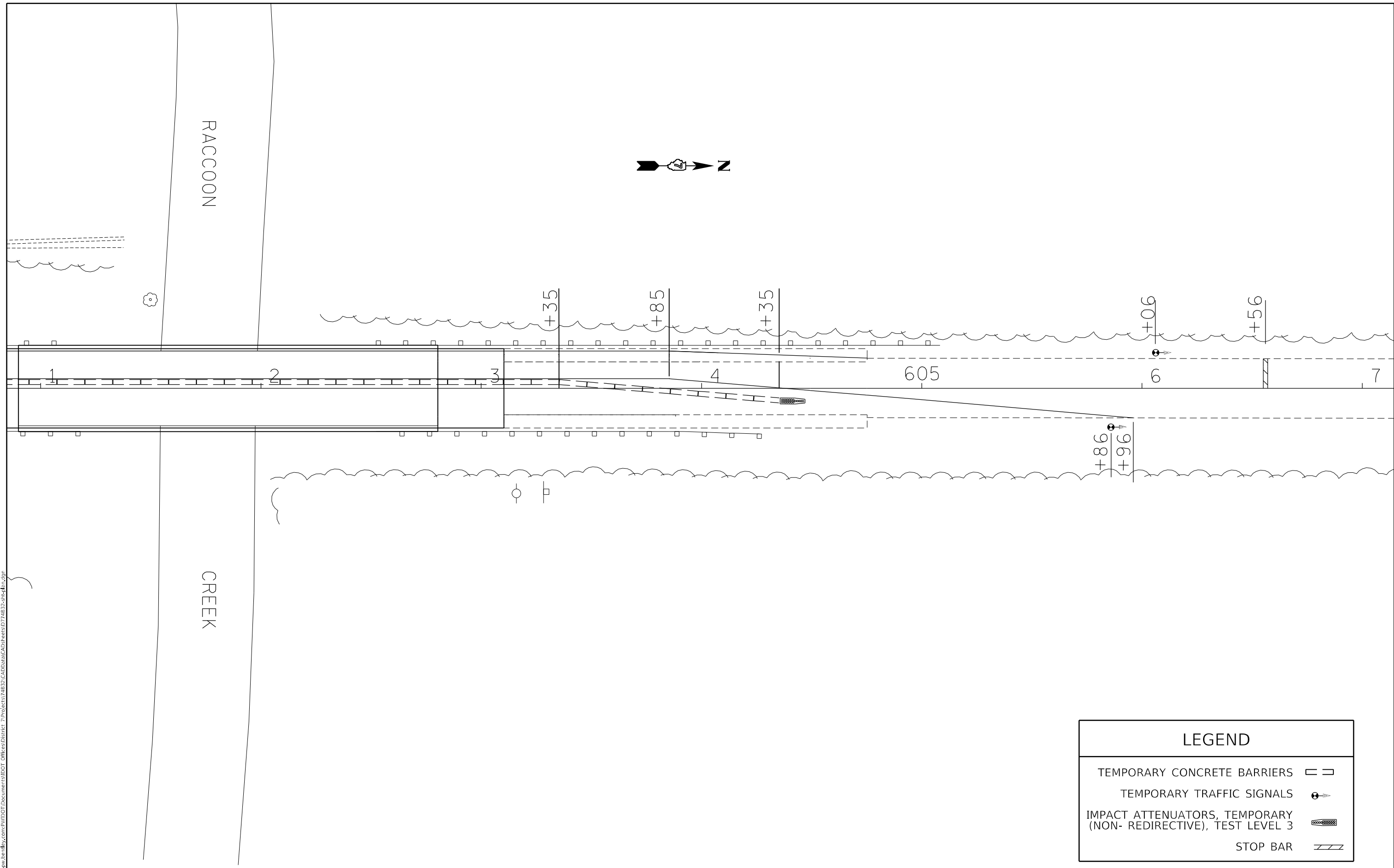
USER NAME = jessica.ville	DESIGNED -	REVISED -
PLOT SCALE = 40,0000 */ in.	DRAWN -	REVISED -
PLOT DATE = 10/11/2023	CHECKED -	REVISED -
	DATE -	REVISED -

**STATE OF ILLINOIS
DEPARTMENT OF TRANSPORTATION**

STAGE 2 CONSTRUCTION

SCALE: SHEET OF SHEETS STA. TO STA.

F.A.P. RTE.	SECTION	COUNTY	TOTAL SHEETS	SHEET NO.
332	D7 BRIDGE REPAIRS 2024-6	WABASH	23	10
ILLINOIS FED. AID PROJECT			CONTRACT NO. 74B32	



RACCOON

CREEK

+35

+85

+35

+90

+56

+86

+96

1

2

3

4

605

6

7

LEGEND

- TEMPORARY CONCRETE BARRIERS
- TEMPORARY TRAFFIC SIGNALS
- IMPACT ATTENUATORS, TEMPORARY (NON- REDIRECTIVE), TEST LEVEL 3
- STOP BAR

MODEL: Default
FILE: \\na11c1-pw-beadley.com\PI\DOT\Documents\DOT Offices\District 7\Projects\74B32\CADD\DATA\CAD\Sheets\74B32-sheets.dgn

USER NAME = jessica.wille	DESIGNED -	REVISED -
	DRAWN -	REVISED -
PLOT SCALE = 40,0000 * / in.	CHECKED -	REVISED -
PLOT DATE = 10/11/2023	DATE -	REVISED -

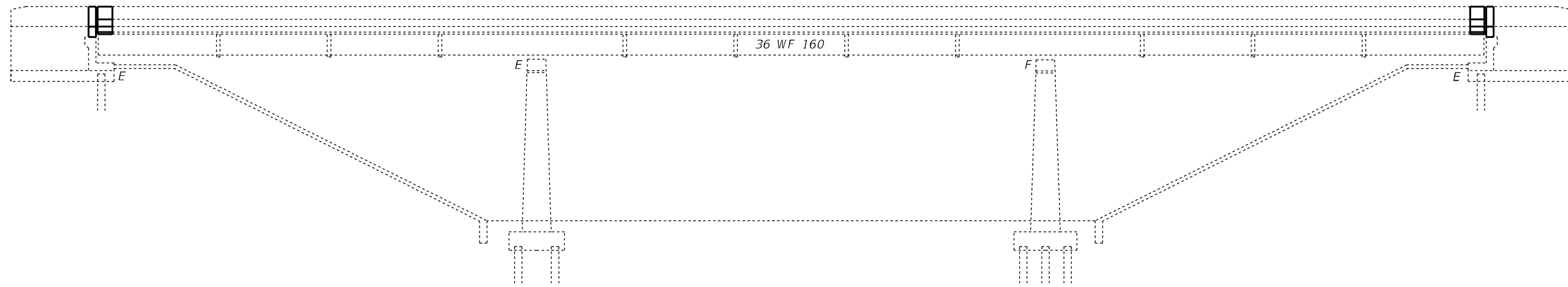
STATE OF ILLINOIS
DEPARTMENT OF TRANSPORTATION

STAGE 2 CONSTRUCTION

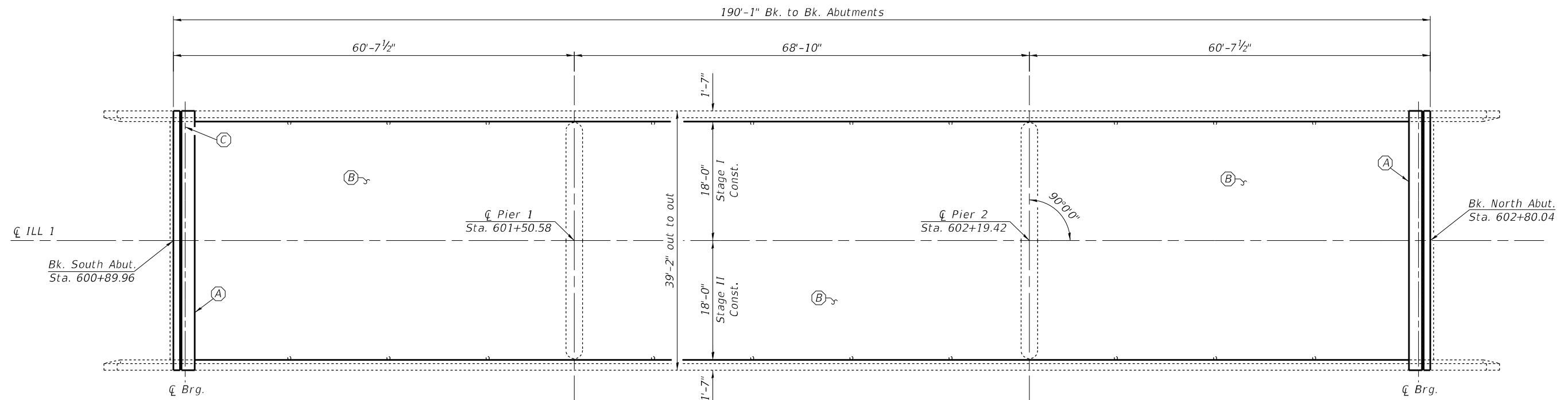
SCALE: SHEET OF SHEETS STA. TO STA.

F.A.P. RTE.	SECTION	COUNTY	TOTAL SHEETS	SHEET NO.
332	D7 BRIDGE REPAIRS 2024-6	WABASH	23	11
			CONTRACT NO. 74B32	
ILLINOIS FED. AID PROJECT				

EXISTING STRUCTURE: SN 093-0001 carries ILL 1 over Raccoon Creek. The three span, steel beam structure was built in 1956. The proposed project consists of replacement of the expansion joints with new strip seals, structural steel repair, full depth deck patching, scarification & concrete overlay.

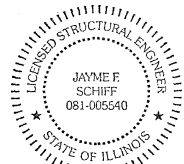


ELEVATION



PLAN

- (A) - Remove Existing Joints and Construct Strip Seal Expansion Joint
- (B) - Bridge Deck Scarification $\frac{3}{4}$ ", Deck Patching, & Bridge Deck Fly Ash or GGBF Slag Concrete Overlay $2\frac{1}{2}$ ", Diamond Grinding (Bridge Section)
- (C) - Structural Steel Repair



EXPIRES 11-30-2024

Jayme F. Schiff

USER NAME - jesska2111e	DESIGNED - T. Walk	REVISED -
	DRAWN - T. Walk	REVISED -
PLOT SCALE = 100,0000' / in.	CHECKED - D. Macklin	REVISED -
PLOT DATE = 10/11/2023	DATE - November 2022	REVISED -

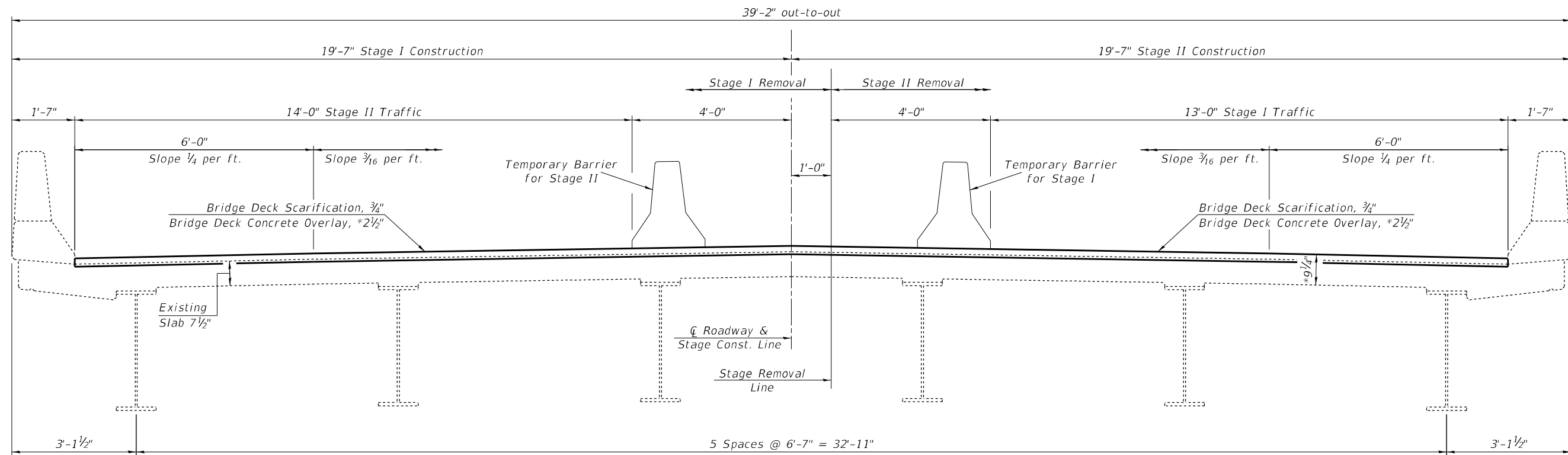
STATE OF ILLINOIS
DEPARTMENT OF TRANSPORTATION

GENERAL PLAN & ELEVATION
S.N. 093-0001

SCALE: SHEET 1 OF 8 SHEETS STA. TO STA.

F.A.P. RTE.	SECTION	COUNTY	TOTAL SHEETS	SHEET NO.
332	D7 BRIDGE REPAIRS 2024-6	WABASH	23	12
ILLINOIS FED. AID PROJECT			CONTRACT NO. 74B32	

MODEL: Default
FILE: \\nafe-pw\builds-pw-bee\paw.com\paw\DOT\Documents\DOT_Offices\Director_7\Projects\74B32\CADD\Drawings\CAD\Sheet\093-0001_Bridge_Repair



* Overlay thickness prior to 1/4" grinding (Typ.)

STAGE CONSTRUCTION DETAIL
Looking North

GENERAL NOTES

Plan dimensions and details relative to existing plans are subject to nominal construction variations. The Contractor shall field verify existing dimensions and details affecting new construction and make necessary approved adjustments prior to construction or ordering of materials. Such variations shall not be cause for additional compensation for a change in scope of the work, however, the Contractor will be paid for the quantity actually furnished at the unit price bid for the work.

Reinforcement Bars designated (E) shall be epoxy coated.

Existing reinforcement bars extending into the removal area shall be cleaned, straightened and incorporated into the new construction. Any reinforcement bars that are damaged during concrete removal operations shall be replaced with an approved bar splicer or anchorage system. Cost included with CONCRETE REMOVAL.

Prior to pouring the new concrete deck, all heavy or loose rust, loose mill scale, and other loose or potentially detrimental foreign material shall be removed from the surfaces in contact with concrete. Tightly adhered paint may remain unless otherwise noted. Removal shall be accomplished by methods that will not damage the steel and the cost will be included in the pay item covering removal of the existing concrete.

Existing structural steel that will be in contact with new structural steel shall be cleaned and painted prior to erection as required by the Special Provision "Cleaning and Painting Contact Surface Areas of Existing Steel Structures".

Protective Coat to be applied to areas of new concrete only, including bridge deck concrete overlay.

Joint openings shall be adjusted according to Article 520.04 of the Standard Specifications when the deck is poured at an ambient temperature other than 50 °F.

Areas of deck repairs shown are estimated. The Engineer shall show actual locations of deck repairs on as-built plans.

Full depth deck slab repairs performed in the exterior bays of the bridge deck (between the parapet walls and the first interior beams) shall be limited to individual lengths no greater than 10'. In these portions of the deck, repair areas longer than 10' shall be divided into segments not greater than 10' in length, and the segments shall be poured in alternating sequence. Subsequent segments repaired in sequence shall not be removed until 72 hours shall have elapsed from the end of the previous, adjacent pour, and the adjacent pour shall have attained a minimum modulus of rupture of 650psi.

TOTAL BILL OF MATERIAL

ITEM	UNIT	QUANTITY
Concrete Removal	Cu. Yd.	10
Concrete Superstructure	Cu. Yd.	10.3
Reinforcement Bars, Epoxy Coated	Pound	1,300
Bar Splicers	Each	24
Bridge Deck Scarification, 3/4"	Sq. Yd.	735
Bridge Deck Fly Ash or GGBF Slag Concrete Overlay, 2 1/2"	Sq. Yd.	735
Diamond Grinding (Bridge Section)	Sq. Yd.	669
Bridge Deck Grooving (Longitudinal)	Sq. Yd.	502
Preformed Joint Strip Seal	Foot	76
Protective Coat	Sq. Yd.	763
Deck Slab Repair (Full Depth, Type I)	Sq. Yd.	11.0
Deck Slab Repair (Full Depth, Type II)	Sq. Yd.	16.0
Approach Slab Repair (Partial Depth)	Sq. Yd.	1.0
Structural Steel Repair	Pound	90

MODEL: Default
FILE: \\na16c-pw-bead-01.com\PIV\DOT\Documents\DOT Office\Dir\Dir: 7\Project\74832\CADD\Bids\CAD\Sheet\093-0001_Bridge Repair

USER NAME = jessica.hille	DESIGNED - T. Walk	REVISED -
PLOT SCALE = 100,0000 ' / in.	DRAWN - T. Walk	REVISED -
PLOT DATE = 10/11/2023	CHECKED - D. Macklin	REVISED -
	DATE - November 2022	REVISED -

**STATE OF ILLINOIS
DEPARTMENT OF TRANSPORTATION**

**STAGE CONSTRUCTION, GENERAL NOTES, &
BILL OF MATERIALS S.N. 093-0001**

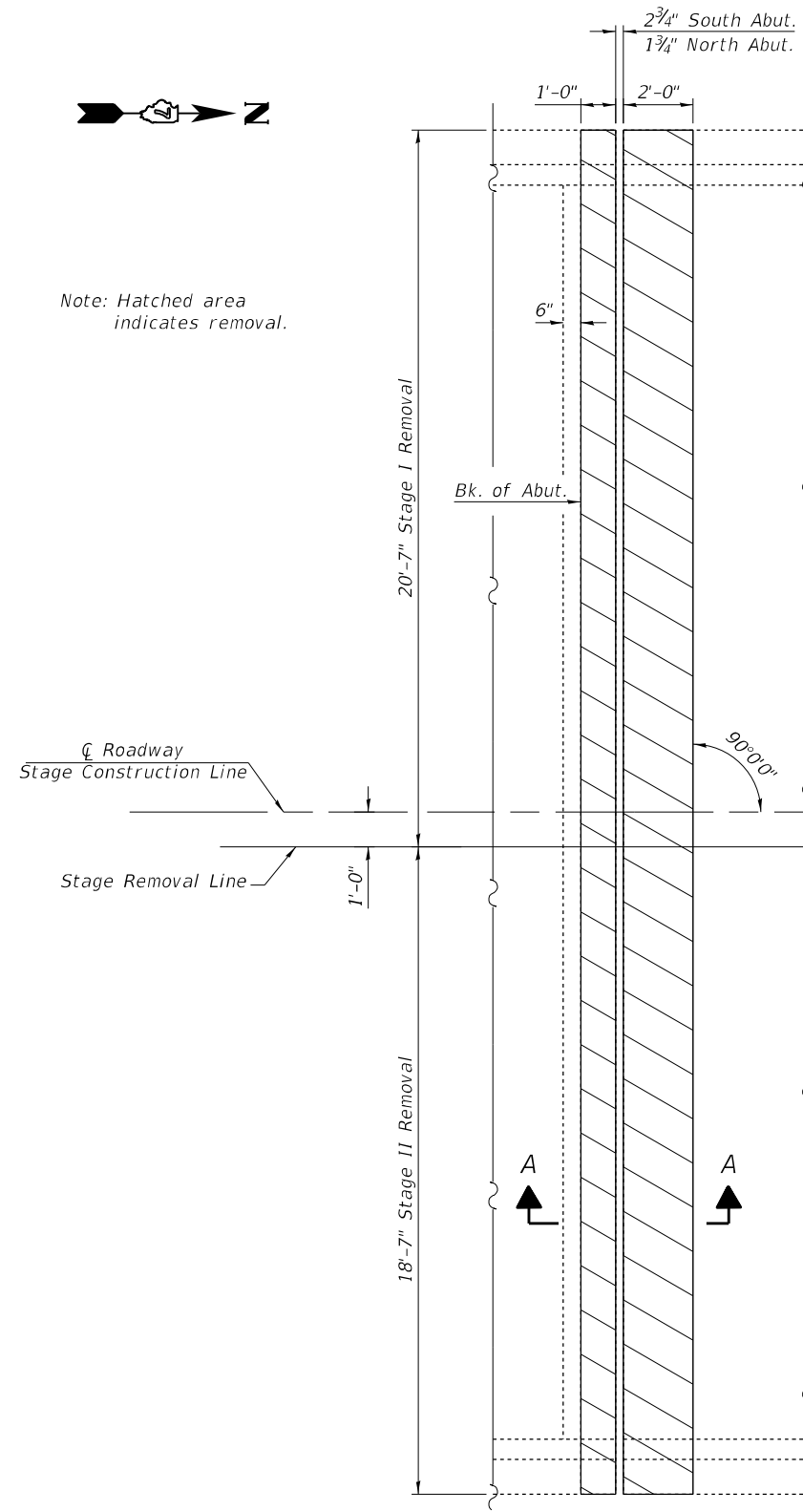
SCALE: SHEET 2 OF 8 SHEETS STA. TO STA.

F.A.P RTE.	SECTION	COUNTY	TOTAL SHEETS	SHEET NO.
332	D7 BRIDGE REPAIRS 2024-6	WABASH	23	13
ILLINOIS FED. AID PROJECT			CONTRACT NO. 74832	

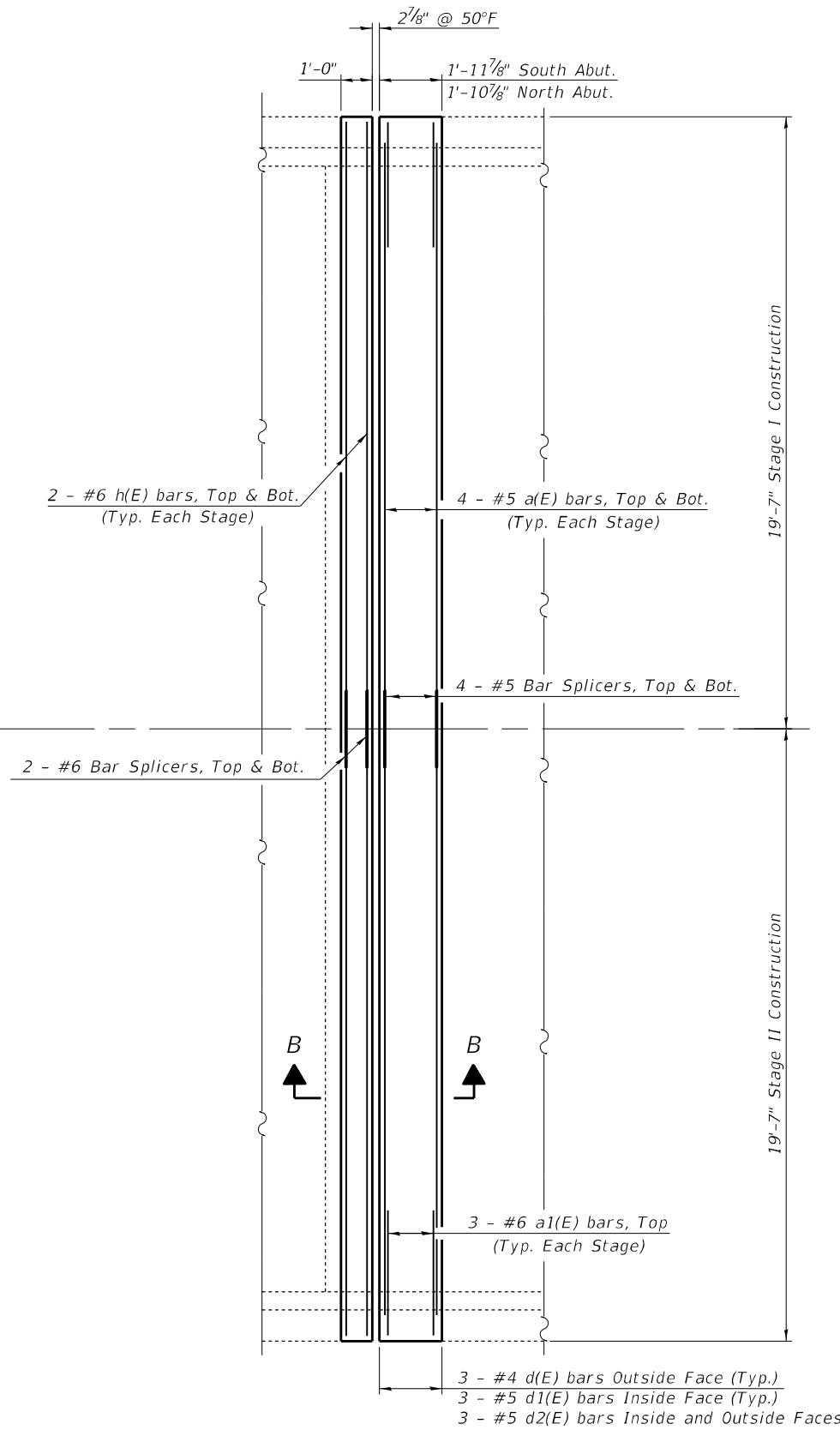
For Sections A-A & B-B See Sheet 4 of 8



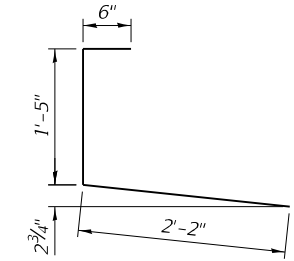
Note: Hatched area indicates removal.



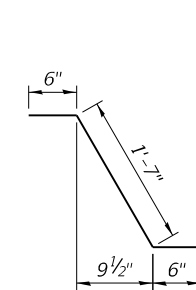
REMOVAL PLAN
South Abutment Shown
North Abutment Similar



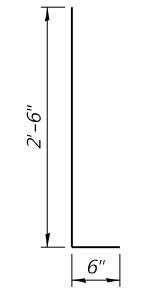
REINFORCEMENT PLAN
South Abutment Shown
North Abutment Similar



BAR d(E)



BAR d1(E)



BAR d2(E)

BILL OF MATERIAL - TWO ABUTMENTS

Bar	No.	Size	Length	Shape
a(E)	32	#5	18'-7"	—
a1(E)	12	#6	4'-0"	—
h(E)	16	#6	19'-3"	—
d(E)	12	#4	4'-1"	┌
d1(E)	12	#5	2'-7"	└
d2(E)	24	#5	3'-0"	┌

ITEM	UNIT	QUANTITY
Concrete Removal	Cu. Yd.	10
Concrete Superstructure	Cu. Yd.	10.3
Reinforcement Bars, Epoxy Coated	Pound	1,300
Bar Splicers	Each	24

MODEL: Default
 FILE: \\naafpc-prod\ultra-cw-bead\paw.com\PIV\DOT\Documents\DOT Office\Dir\dr. 7\Projects\74832\CADD\DATA\CAD\Sheet\093-0001_Bridge_Repair

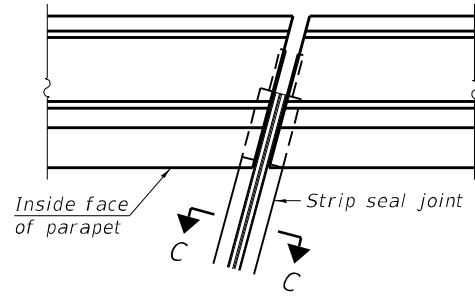
USER NAME = jessica.hille	DESIGNED - T. Walk	REVISED -
PLOT SCALE = 100,0000' / in.	DRAWN - T. Walk	REVISED -
PLOT DATE = 10/11/2023	CHECKED - D. Macklin	REVISED -
	DATE - November 2022	REVISED -

**STATE OF ILLINOIS
DEPARTMENT OF TRANSPORTATION**

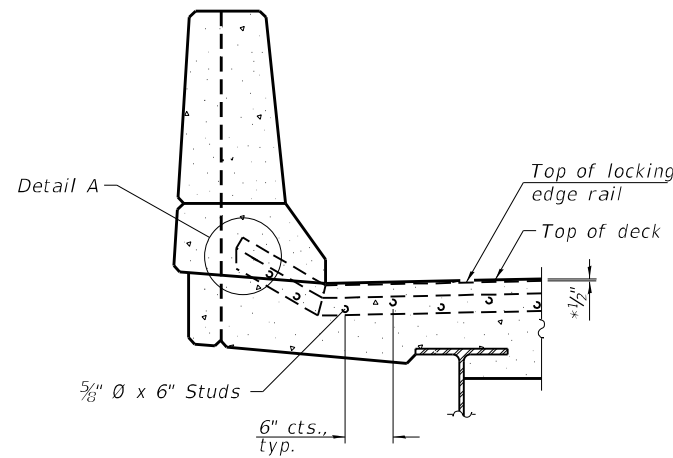
**EXPANSION JOINT REPLACEMENT DETAILS
S.N. 093-0001**

SCALE: SHEET 3 OF 8 SHEETS STA. TO STA.

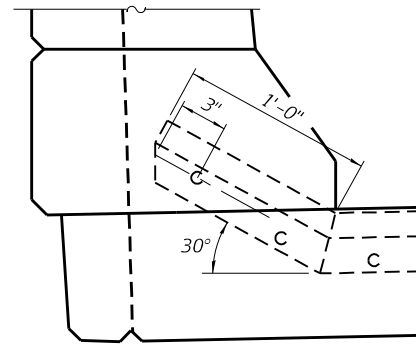
F.A.P. RTE.	SECTION	COUNTY	TOTAL SHEETS	SHEET NO.
332	D7 BRIDGE REPAIRS 2024-6	WABASH	23	14
ILLINOIS FED. AID PROJECT			CONTRACT NO. 74832	



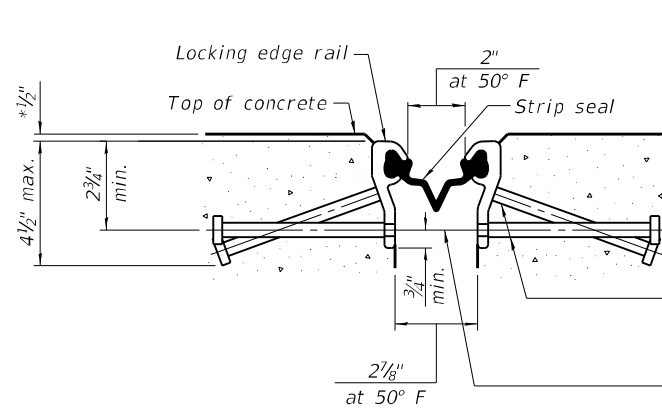
PLAN AT PARAPET



ELEVATION AT PARAPET

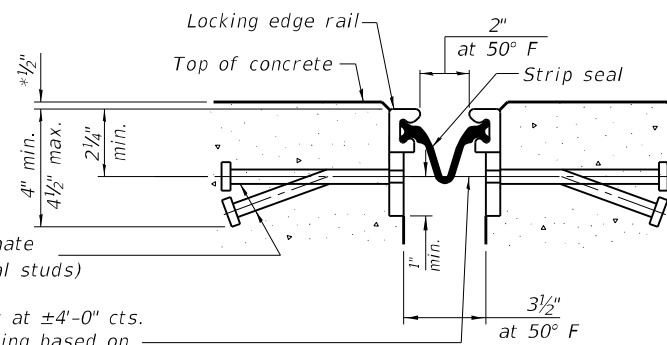


DETAIL A



SHOWING ROLLED RAIL JOINT

* Thickness prior to 1/4" grinding (Typ.)



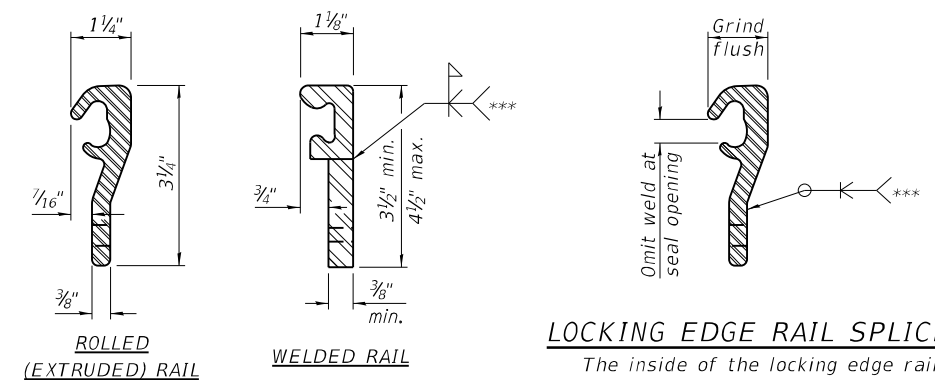
SHOWING WELDED RAIL JOINT

** 5/8" ϕ x 6" studs @ 6" cts. (alternate angled/bent studs with horizontal studs)

3/8" ϕ threaded rods in 7/16" ϕ holes at $\pm 4'-0"$ cts. for holding the proper joint opening based on the temperature during the deck pour. Place to miss studs. All rods shall be burned, or sawed off flush with the plates after concrete is set.

SECTION C-C

** Granular or solid flux filled headed studs conforming to Article 1006.32 of the Std. Specs., automatically end welded.



LOCKING EDGE RAILS

*** Back gouge not required if complete joint penetration is verified by mock-up.

LOCKING EDGE RAIL SPLICE

The inside of the locking edge rail groove shall be free of weld residue. Rolled rail shown, welded rail similar.

BILL OF MATERIAL

Item	Unit	Total
Preformed Joint Strip Seal	Foot	76

Notes:

The strip seal shall be made continuous and shall have a minimum thickness of 1/4". The configuration of the strip seal shall match the configuration of the locking edge rails. Open or "webbed" strip seal gland configurations are not permitted. The gland shall be sized for a maximum rated movement of 4 inches.

The locking edge rails depicted are configured for typical applications and are conceptual only. The actual configuration of the locking edge rails and matching strip seal may vary from manufacturer to manufacturer provided they fit the application and meet the minimum anchorage shown. Flanged edge rails, however, will not be allowed. Locking edge rails may exceed the 4 1/2" maximum depth provided the anchorage system is revised according to the manufacturer's recommendation.

The manufacturer's recommended installation methods shall be followed.

All steel components shall be galvanized after fabrication according to Article 520.03 of the Standard Specifications.

The Maximum space between locking edge rail segments shall be 3/16" and sealed with a suitable sealant; however, any rail joint within 10' measured perpendicular to the face of the curb or parapet shall be welded as shown in the locking edge rail splice detail.

The concrete opening below the strip seal will vary based on the locking edge rail chosen by the Contractor. Deck and parapet lengths shown elsewhere in the plans are dimensioned to the concrete opening, not the joint opening, and are based on the rolled locking edge rail. If the Contractor elects to use a different locking edge rail, dimensional adjustments may be required. One exception to this would be the strip seal joint at the end of the precast bridge approach slab. For these cases the pavement connector length shall be adjusted, not the length of the bridge approach slab.

MODEL: Default
 FILE: 332.Dwg
 PROJECT: 74832
 DRAWING: 093-001
 SHEET: 5 OF 8
 DATE: 10/11/2023

USER NAME = jessica.hille	DESIGNED - T. Walk	REVISED -
PLOT SCALE = 100,0000' / in.	DRAWN - T. Walk	REVISED -
PLOT DATE = 10/11/2023	CHECKED - D. Macklin	REVISED -
	DATE - November 2022	REVISED -

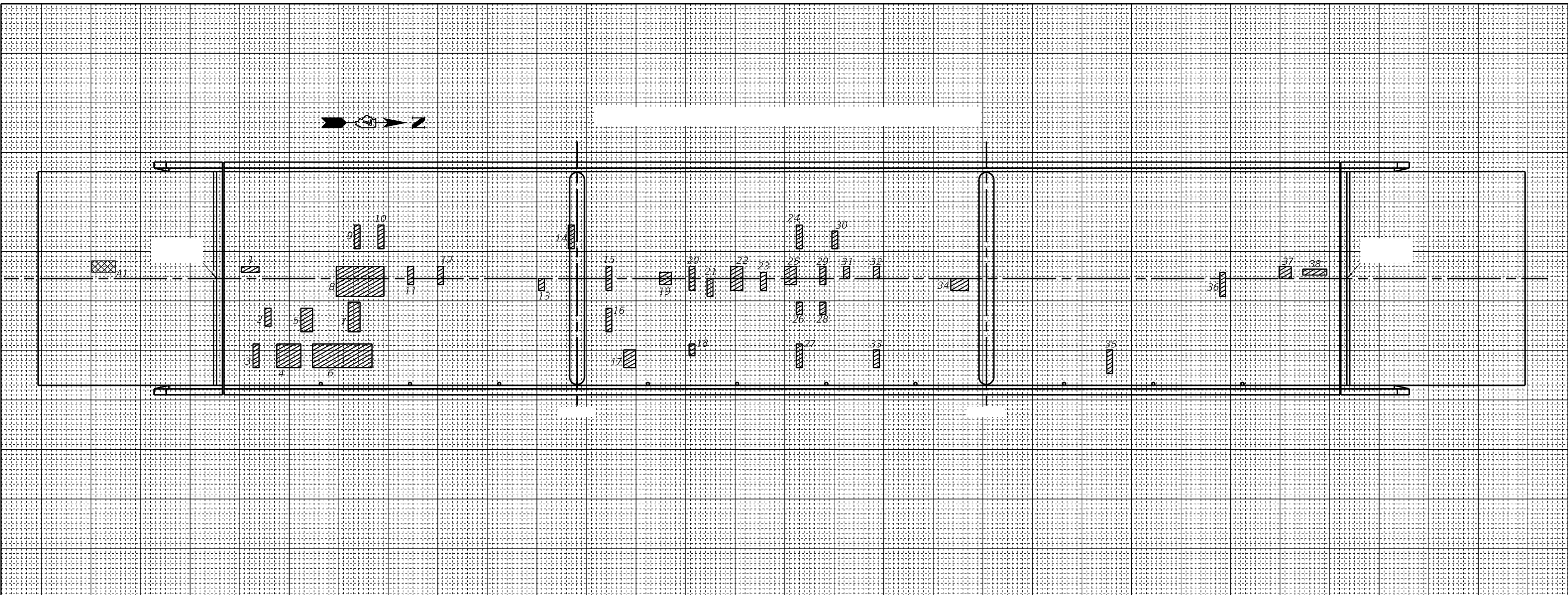
STATE OF ILLINOIS
DEPARTMENT OF TRANSPORTATION

PREFORMED JOINT STRIP SEAL DETAIL
S.N. 093-0001

SCALE: SHEET 5 OF 8 SHEETS STA. TO STA.

F.A.P. RTE.	SECTION	COUNTY	TOTAL SHEETS	SHEET NO.
332	D7 BRIDGE REPAIRS 2024-6	WABASH	23	16
ILLINOIS FED. AID PROJECT			CONTRACT NO. 74832	

MODEL: Default
 FILE NAME: p:\w\p\w\benley.com\p\DOT\Documents\DOT - Offices\District 7\Projects\74832\CAD\Drawings\093-001 - Bridge Repair



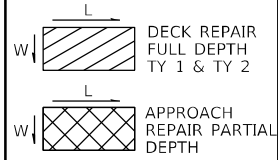
PATCH NO.	SIZE		DECK SLAB REPAIR (FD TY I)	DECK SLAB REPAIR (FD TY II)
	LENGTH	WIDTH	SQ YD	SQ YD
1	3.0	1.0	0.3	
2	1.0	3.0	0.3	
3	1.0	4.0	0.4	
4	4.0	4.0		1.8
5	2.0	4.0	0.9	
6	10.0	4.0	4.4	
7	2.0	5.0	1.1	
8	8.0	5.0	4.4	
9	1.0	4.0	0.4	
10	1.0	4.0	0.4	
11	1.0	3.0	0.3	
12	1.0	3.0	0.3	
13	1.0	2.0	0.2	
14	1.0	4.0	0.4	
15	1.0	4.0	0.4	
16	1.0	4.0	0.4	

PATCH NO.	SIZE		DECK SLAB REPAIR (FD TY I)	DECK SLAB REPAIR (FD TY II)
	LENGTH	WIDTH	SQ YD	SQ YD
17	2.0	3.0		0.7
18	1.0	2.0	0.2	
19	2.0	2.0	0.4	
20	1.0	4.0	0.4	
21	1.0	3.0	0.3	
22	2.0	4.0		0.9
23	1.0	3.0	0.3	
24	1.0	4.0	0.4	
25	2.0	3.0		0.7
26	1.0	2.0	0.2	
27	1.0	4.0	0.4	
28	1.0	2.0	0.2	
29	1.0	3.0	0.3	
30	1.0	3.0	0.3	
31	1.0	2.0	0.2	
32	1.0	2.0	0.2	

PATCH NO.	SIZE		DECK SLAB REPAIR (FD TY I)	DECK SLAB REPAIR (FD TY II)
	LENGTH	WIDTH	SQ YD	SQ YD
33	1.0	3.0	0.3	
34	3.0	2.0		0.7
35	1.0	4.0	0.4	
36	1.0	4.0	0.4	
37	2.0	2.0	0.4	
38	4.0	1.0	0.4	
TOTAL ROUNDS TO:			11.0	16.0

PATCH NO.	SIZE		APPROACH SLAB REPAIR (PARTIAL DEPTH)
	LENGTH	WIDTH	SQ YD
A1	4.0	2.0	0.9
TOTAL ROUNDS TO:			1.0

THE LOCATIONS AND SIZES SHOWN GRAPHICALLY ABOVE ARE APPROXIMATE. SEE THIS TABLE FOR ACTUAL SIZES.



DATE OF SURVEY: 10-19-22
 SURVEY BY: DPM & TMW
 METHOD OF SURVEY: VISUAL

ESTIMATED PAY QUANTITIES:
 DECK SLAB REPAIR (FULL DEPTH TYPE I)
 11.0 SQ YD
 DECK SLAB REPAIR (FULL DEPTH TYPE II)
 16.0 SQ YD
 APPROACH SLAB REPAIR (PARTIAL DEPTH)
 1.0 SQ YD

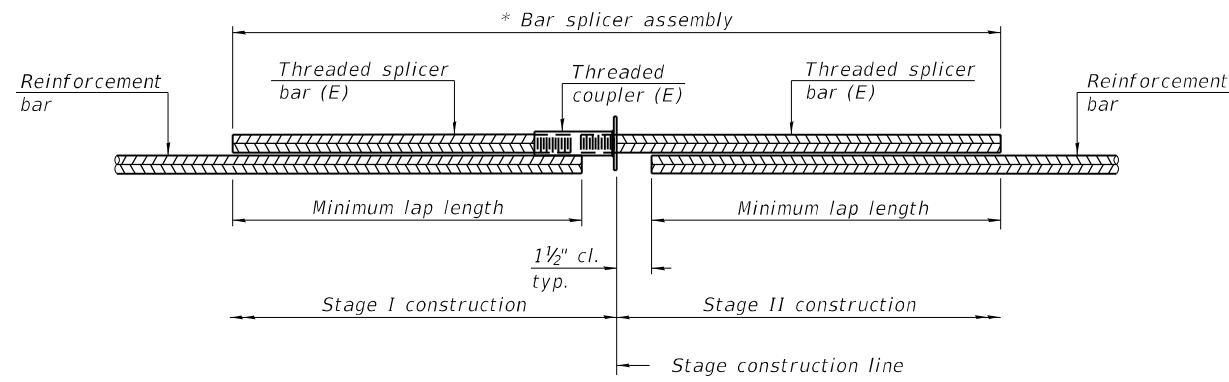
USER NAME = jessica.hille	DESIGNED - T. Walk	REVISED -
PLOT SCALE = 100,000' / in.	DRAWN - T. Walk	REVISED -
PLOT DATE = 10/11/2023	CHECKED - D. Macklin	REVISED -
	DATE - November 2022	REVISED -

STATE OF ILLINOIS
 DEPARTMENT OF TRANSPORTATION

BRIDGE DECK PATCHING & APPROACH REPAIR
 SN. 093-0001

SCALE: SHEET 6 OF 8 SHEETS STA. TO STA.

F.A.P. RTE.	SECTION	COUNTY	TOTAL SHEETS	SHEET NO.
332	D7 BRIDGE REPAIRS 2024-6	WABASH	23	17
CONTRACT NO. 74B32				
ILLINOIS FED. AID PROJECT				

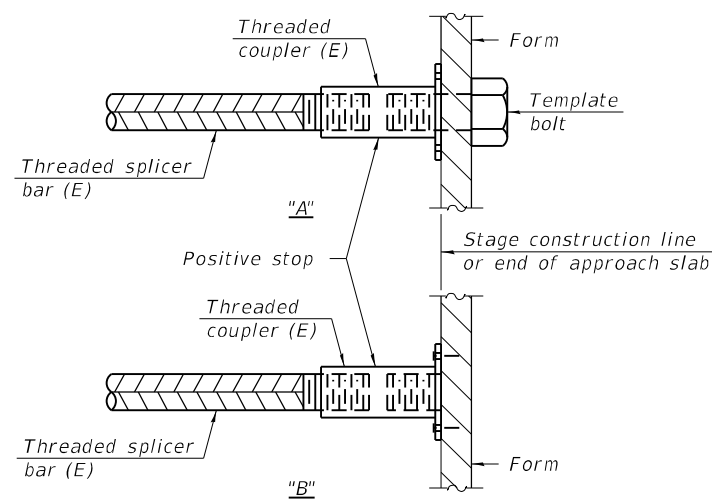


STANDARD BAR SPLICER ASSEMBLY PLAN
 (All components shall be provided from one supplier)

Threaded splicer bar length = min. lap length + 1 1/2" + thread length

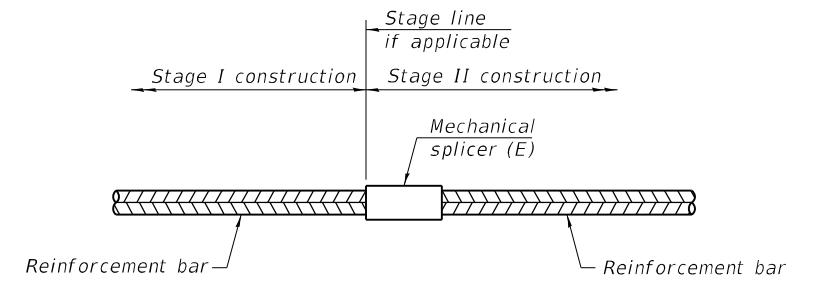
* Epoxy not required on Bar Splicer Assembly components used in conjunction with black bars.

Location	Bar size	No. assemblies required	Minimum lap length
Deck	#5	16	3'-2"
Approach	#6	8	4'-0"



INSTALLATION AND SETTING METHODS

"A" : Set bar splicer assembly by means of a template bolt.
 "B" : Set bar splicer assembly by nailing to wood forms or cementing to steel forms.
 (E) : Indicates epoxy coating.



STANDARD MECHANICAL SPLICER

Location	Bar size	No. assemblies required

Notes:
 Splicer bars shall be deformed with threaded ends and have a minimum 60 ksi yield strength.
 All reinforcement shall be lapped and tied to the splicer bars.
 Bar splicer assemblies shall be epoxy coated according to the requirements for reinforcement bars. See Section 508 of the Standard Specifications.
 See approved list of bar splicer assemblies and mechanical splicers for alternatives.

BSD-1

1-1-2020

MODEL: Default
 FILE: \\na16c-pw-bentley.com\P\INDOT\Documents\DOT Office\Dir\dr. T\Project\74832\CADD\DATA\CAD\Sheets\093-0001_Bridge_Repair

USER NAME = jessica.hille	DESIGNED - T. Walk	REVISED -
	DRAWN - T. Walk	REVISED -
PLOT SCALE = 100,0000' / in.	CHECKED - D. Macklin	REVISED -
PLOT DATE = 10/11/2023	DATE - November 2022	REVISED -

**STATE OF ILLINOIS
 DEPARTMENT OF TRANSPORTATION**

BAR SPLICER ASSEMBLY AND MECHANICAL SPLICER DETAILS
S.N. 093-0001

SCALE: SHEET 7 OF 8 SHEETS STA. TO STA.

F.A.P. RTE.	SECTION	COUNTY	TOTAL SHEETS	SHEET NO.
332	D7 BRIDGE REPAIRS 2024-6	WABASH	23	18
			CONTRACT NO. 74832	
			ILLINOIS FED. AID PROJECT	

NOTES

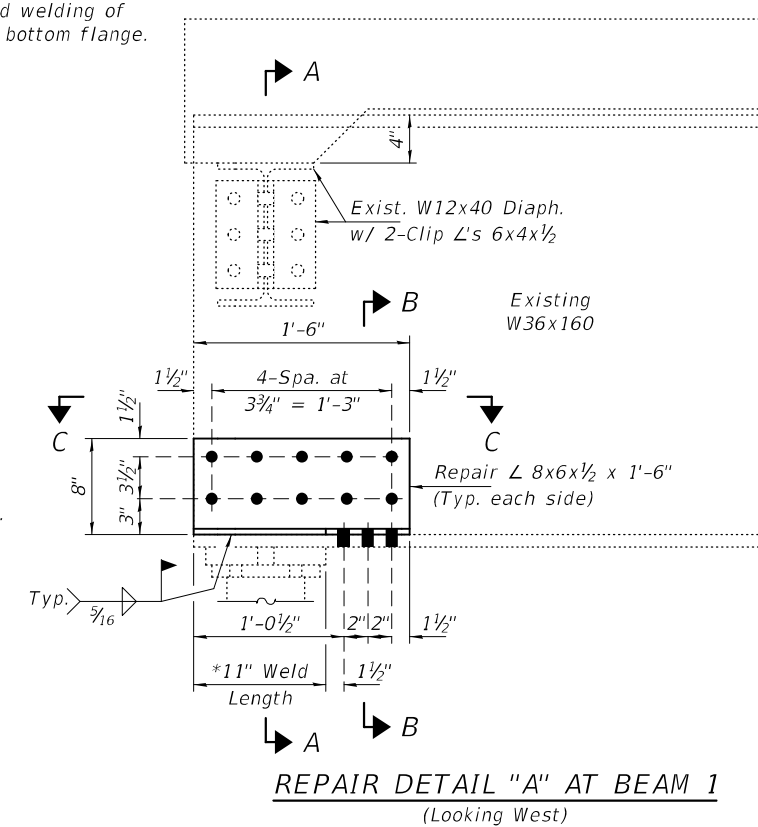
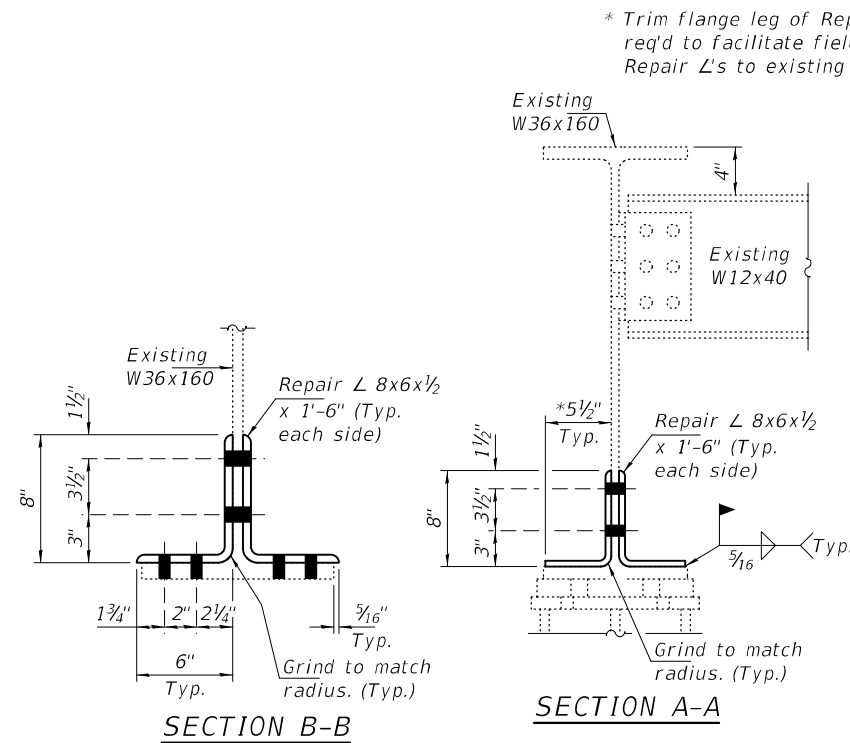
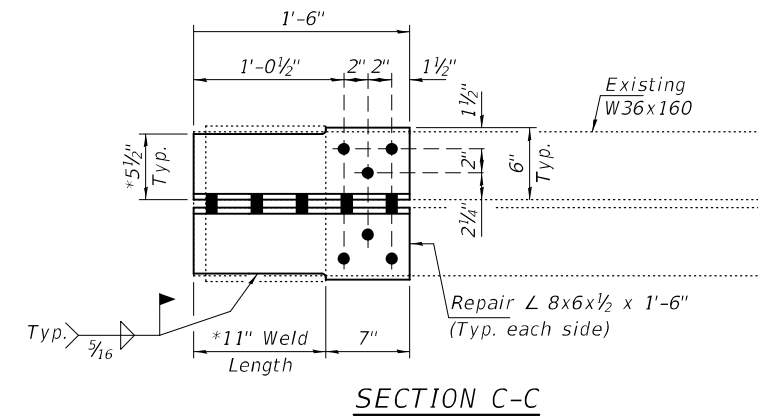
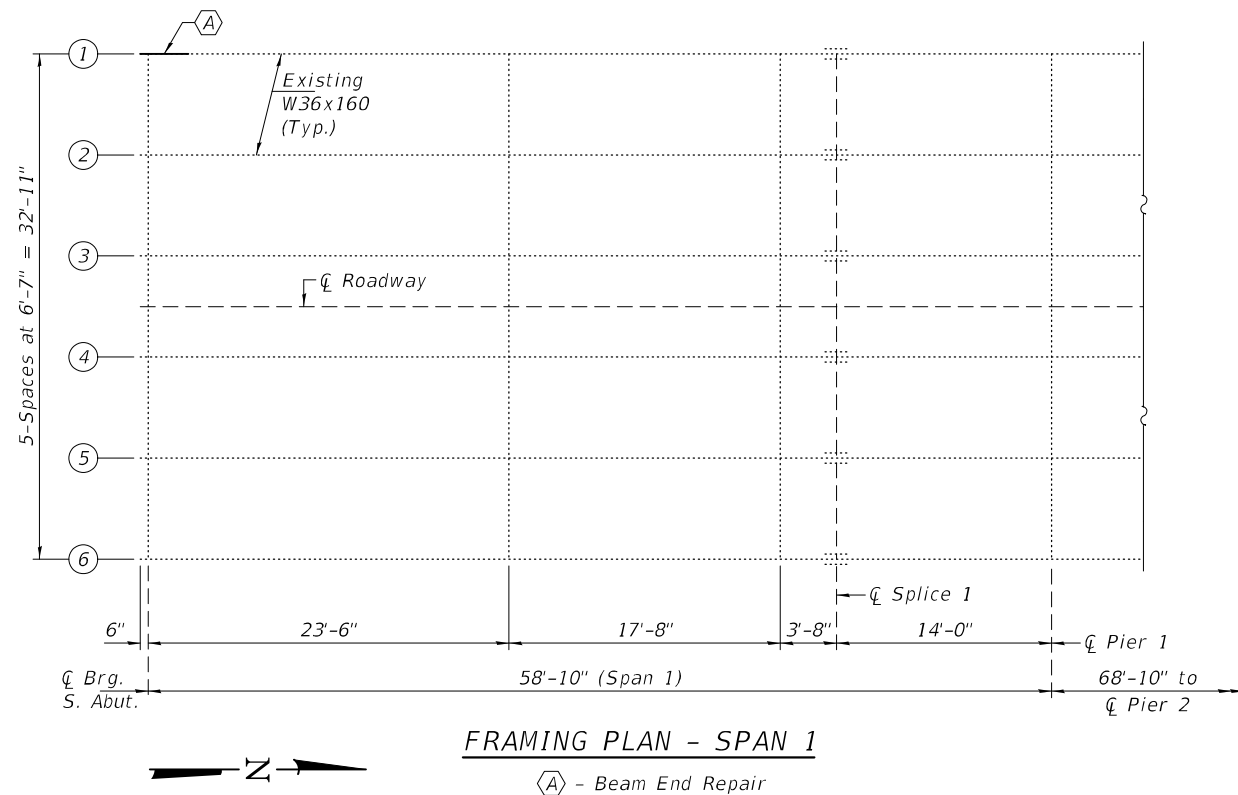
All structural steel shall conform to AASHTO Classification M-270 Gr. 36, unless otherwise noted.

Plan dimensions and details relative to existing plans are subject to nominal construction variations. The Contractor shall field verify existing dimensions and details affecting new construction and make necessary approved adjustments prior to construction or ordering of materials. Such variations shall not be cause for additional compensation for a change in scope of the work, however, the Contractor will be paid for the quantity actually furnished at the unit price bid for the work.

Fasteners shall be high strength bolts. Bolts $\frac{3}{4}"\varnothing$, open holes $1\frac{1}{16}"\varnothing$, unless otherwise noted.

All structural steel, connection bolts, nuts and washers shall be hot dip galvanized according to Special Provision "Hot Dip Glavanizing for Structural Steel". Cost included with Structural Steel Repair.

Existing structural steel that will be in contact with new structural steel shall be cleaned and painted prior to erection as required by the special provision "Cleaning and Painting Contact Surface Areas of Existing Steel Structures".



BILL OF MATERIAL

ITEM	UNIT	QUANTITY
Structural Steel Repair	Pound	90

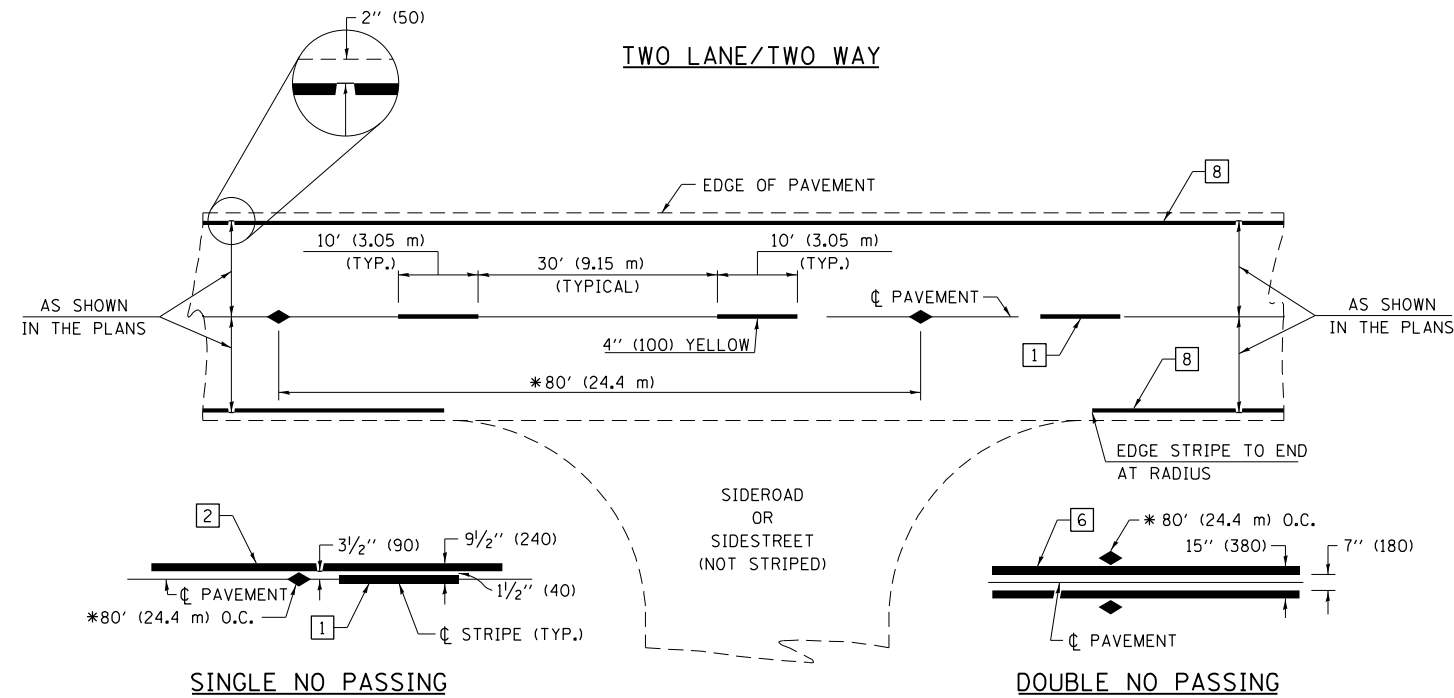
DESIGNED - Adrian T. Holloway	EXAMINED -	DATE - DECEMBER 6, 2023
CHECKED - Jeffrey S. Burke	PASSED -	REVISIONS -
DRAWN - STEFFEN	ENGINEER OF BRIDGES AND STRUCTURES	REVISIONS -
CHECKED - ATH JSB	ENGINEER OF STRUCTURAL SERVICES	

STATE OF ILLINOIS
DEPARTMENT OF TRANSPORTATION

SPAN 1 FRAMING PLAN & BEAM 1 REPAIR DETAILS
ILLINOIS 1 OVER RACCOON CREEK
SN 093-001

SHEET NO. 8 OF 8 SHEETS

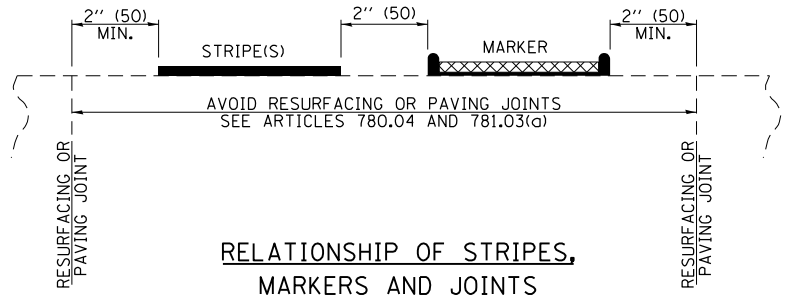
F.A.P. RTE.	SECTION	COUNTY	TOTAL SHEETS	SHEET NO.
332	D7 BRIDGE REPAIRS 2024-6	WABASH	23	19
ILLINOIS			CONTRACT NO. 74B32	
FED. AID PROJECT				



* REDUCE TO 40' (12.2 m) O.C. ON CURVES WITH POSTED OR ADVISORY SPEEDS OF 45 mph (70 km/h) OR LESS.

PAVEMENT MARKING LEGEND

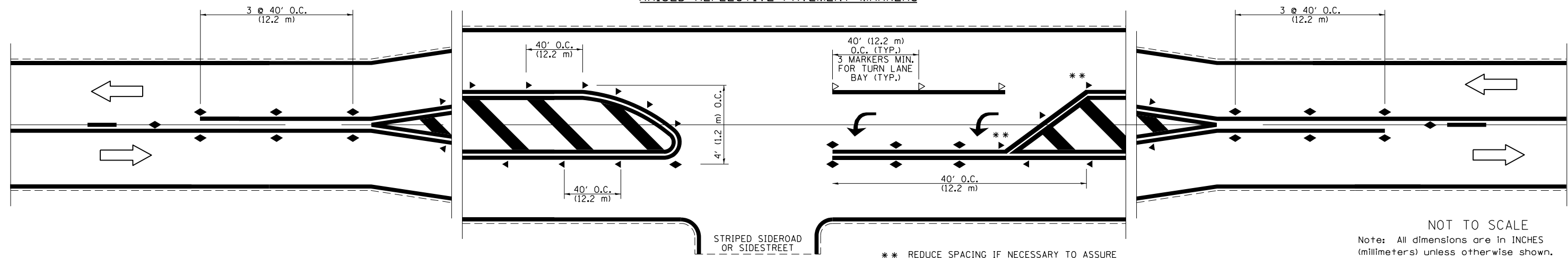
- 1 4" (100) SKIP-DASH (YELLOW)
- 2 4" (100) SOLID (YELLOW)
- 3 12" (300) DIAGONAL (YELLOW)
- 4 4" (100) DOUBLE YELLOW (NARROW)
- 5 12" (300) SOLID WHITE
- 6 4" (100) DOUBLE YELLOW (WIDE)
- 7 6" (150) SKIP-DASH (WHITE)
- 8 4" (100) SOLID (WHITE)
- 9 12" (300) DIAGONAL (WHITE)
- 10 6" (150) SOLID (WHITE)
- 11 24" (600) STOP BAR (WHITE)
- 12 8" (200) SOLID (WHITE)
- 13 4" (100) PARKING WHITE



TYPICAL PAVEMENT MARKERS LEGEND

- ◆ TWO-WAY AMBER MARKER
- ▶ ONE-WAY AMBER MARKER
- ▷ ONE-WAY CRYSTAL MARKER

RAISED REFLECTIVE PAVEMENT MARKERS



** REDUCE SPACING IF NECESSARY TO ASSURE MARKERS AT CORNER POINTS.

NOT TO SCALE
Note: All dimensions are in INCHES (millimeters) unless otherwise shown.

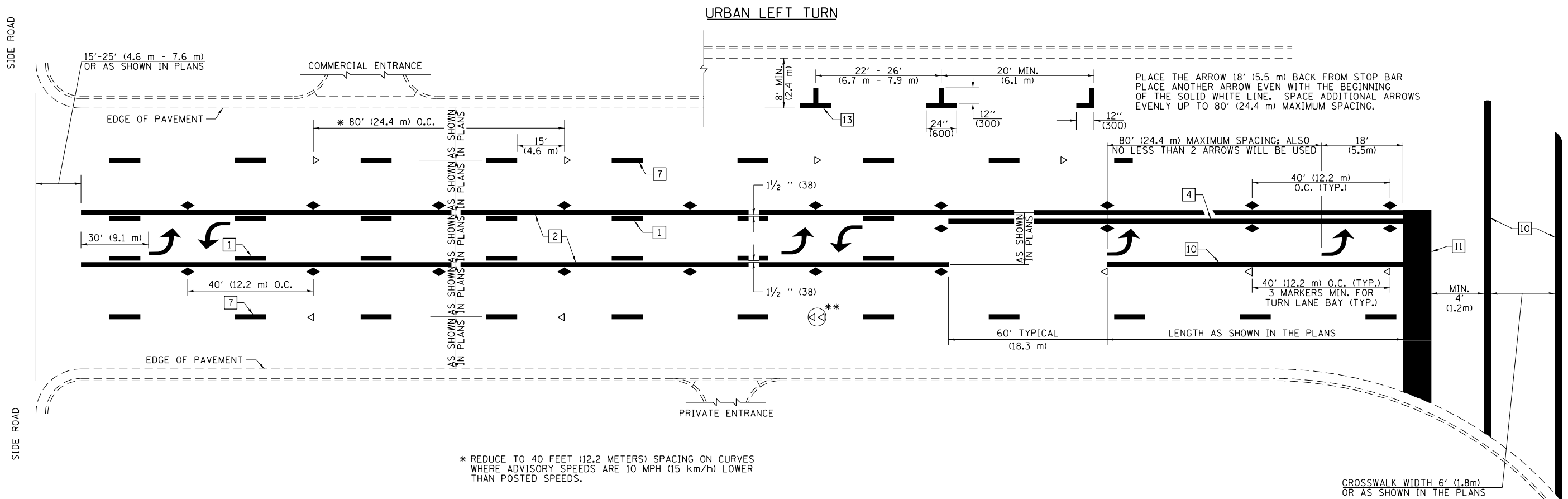
FILE NAME =	USER NAME = jessica.hille	DESIGNED -	REVISED - NAS 06/22
pw:\ilidot-pw\bentley.com\PWIDOT\Documents\DOT Offices\District 7\Projects\74832\CADD\Drawings\Drawings\74832-sht-details.dgn		CHECKED -	REVISED -
PLOT SCALE = 100.0000' / in.		DATE -	REVISED -
PLOT DATE = 10/11/2023			

**STATE OF ILLINOIS
DEPARTMENT OF TRANSPORTATION**

**PAVEMENT MARKING AND RAISED REFLECTIVE PAVEMENT MARKERS
(RURAL & URBAN APPLICATIONS)**

SCALE: SHEET NO. 1 OF 4 SHEETS STA. TO STA.

DISTRICT 7 DETAIL NO. 78000001				
F.A.P. RTE.	SECTION	COUNTY	TOTAL SHEETS	SHEET NO.
332	07 BRIDGE REPAIR 2024-6	WABASH	23	20
CONTRACT NO. 74832				
ILLINOIS FED. AID PROJECT				



PLACE THE ARROW 18' (5.5 m) BACK FROM STOP BAR
 PLACE ANOTHER ARROW EVEN WITH THE BEGINNING
 OF THE SOLID WHITE LINE. SPACE ADDITIONAL ARROWS
 EVENLY UP TO 80' (24.4 m) MAXIMUM SPACING.

* REDUCE TO 40 FEET (12.2 METERS) SPACING ON CURVES
 WHERE ADVISORY SPEEDS ARE 10 MPH (15 km/h) LOWER
 THAN POSTED SPEEDS.

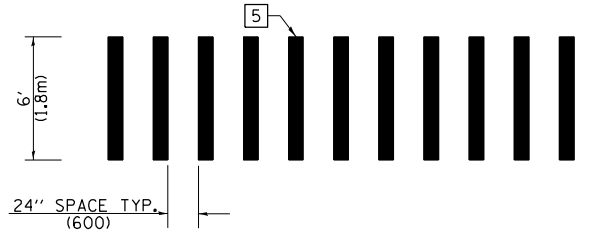
** DOUBLE LANE LINE MARKERS SHALL BE SPECIFIED
 AND SPACED AS SHOWN IN HIGHWAY STANDARD
 781001 FOR MULTI-LANE DIVIDED AND UNDIVIDED
 HIGHWAYS.

PAVEMENT MARKING LEGEND

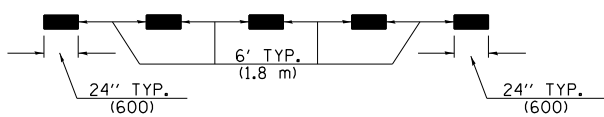
- 1 4" (100) SKIP-DASH (YELLOW)
- 2 4" (100) SOLID (YELLOW)
- 3 12" (300) DIAGONAL (YELLOW)
- 4 4" (100) DOUBLE YELLOW (NARROW)
- 5 12" (300) SOLID WHITE
- 6 4" (100) DOUBLE YELLOW (WIDE)
- 7 6" (150) SKIP-DASH (WHITE)
- 8 4" (100) SOLID (WHITE)
- 9 12" (300) DIAGONAL (WHITE)
- 10 6" (150) SOLID (WHITE)
- 11 24" (600) STOP BAR (WHITE)
- 12 8" (200) SOLID (WHITE)
- 13 4" (100) PARKING WHITE

GENERAL NOTES

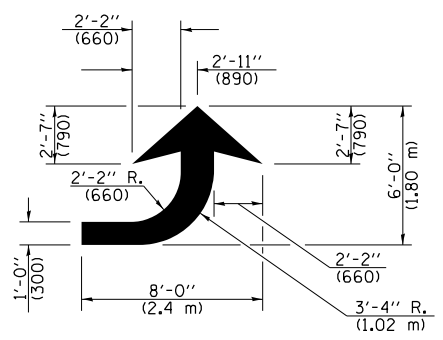
1. TURN ARROW PAIRS SHALL BE PLACED AT 250' (75 m) INTERVALS AND SHALL BE EVENLY SPACED BETWEEN BOTH ENDS OF THE BIDIRECTIONAL LEFT TURN LANE. USE A MINIMUM OF TWO PAIRS PER BLOCK.
2. THE SOLID YELLOW PAVEMENT MARKINGS [2] SHOULD GENERALLY START OR END NEAR THE RADIUS POINT OF EACH STREET RETURN EXCEPT WHERE ONE OR BOTH ENDS WOULD INCLUDE STOP BARS.
3. THE SKIP-DASH PAVEMENT MARKINGS [1] OR [7] SHOULD BE CENTERED BETWEEN BOTH ENDS OF EACH CITY BLOCK AND SHALL BE PLACED SO THEY LINE UP ACROSS FROM EACH OTHER.
4. USE LARGE ARROW SIZE FOR BOTH RURAL AND URBAN LOCATIONS. (SEE SECTION 780 FOR SYMBOLS TABLE)
5. LANE LINE EXTENSIONS SHALL BE THE SAME COLOR AND WIDTH AS THE LANE LINE BEING EXTENDED.
6. ALL WHITE SKIP-DASH LINES SHALL BE 6" IN WIDTH.



**CROSSWALK DETAIL
 (DECATUR CITY LIMITS ONLY)**

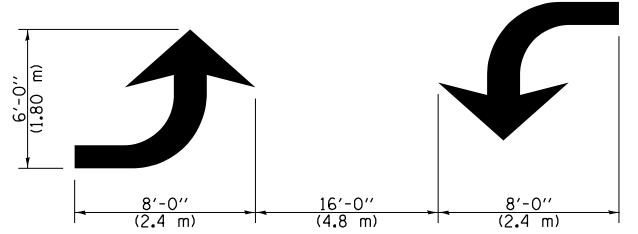


LANE LINE EXTENSIONS



LEFT ARROW

REVERSE FOR RIGHT ARROW
 AREA = 15.6 SQ. FT. (1.47 m²)
 (WHITE)



**TYPICAL DOUBLE
 TURN ARROWS (WHITE)**

NOT TO SCALE

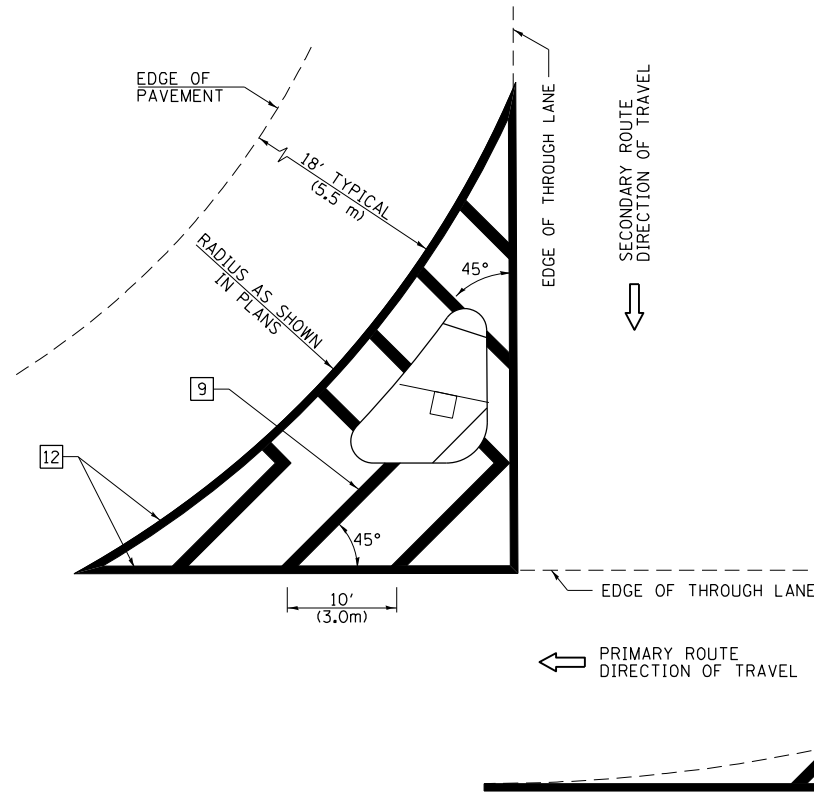
Note: All dimensions are in INCHES (millimeters) unless otherwise shown.

DISTRICT 7 DETAIL NO. 7800001

FILE NAME =	USER NAME = jessica.hille	DESIGNED -	REVISED - NAS 06/22	STATE OF ILLINOIS DEPARTMENT OF TRANSPORTATION	PAVEMENT MARKING AND RAISED REFLECTIVE PAVEMENT MARKERS (RURAL & URBAN APPLICATIONS)	F.A.P. RTE.	SECTION	COUNTY	TOTAL SHEETS	SHEET NO.
pw:\idot-pw\bentley.com\PWIDOT\Documents\IDOT Offices\District 7\Projects\74832\CADD\Drawings\74832-sht-details.dgn	CHECKED -	REVISED -	332			07 BRIDGE REPAIR 2024-6	WABASH	23	21	
PLOT SCALE = 100.0000' / 1"	DATE -	REVISED -	CONTRACT NO. 74B32							
PLOT DATE = 10/11/2023	SCALE:	SHEET NO. 2 OF 4 SHEETS	STA.			TO STA.	ILLINOIS FED. AID PROJECT			

ISLANDS

OPTION 1

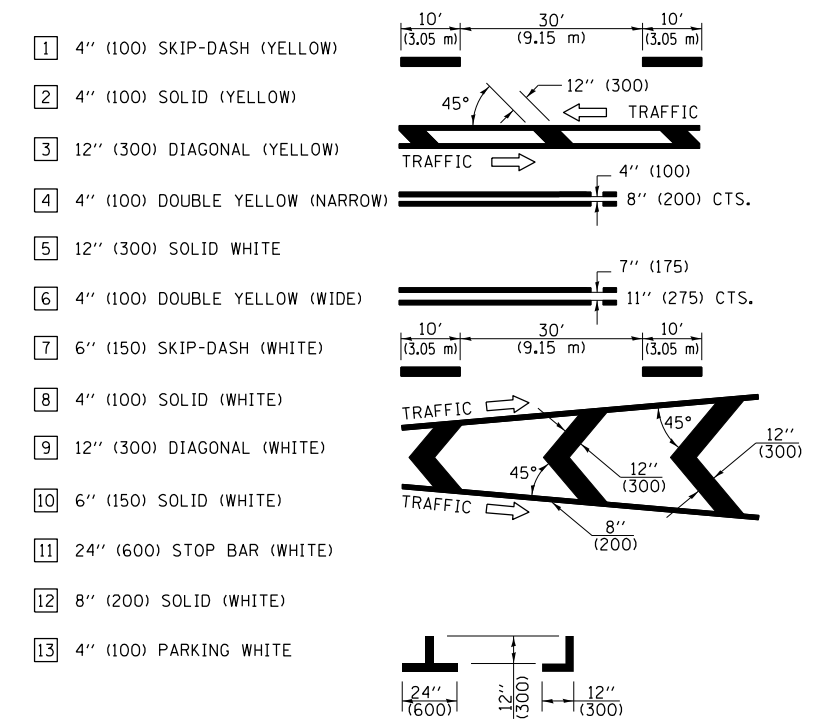


GENERAL NOTES

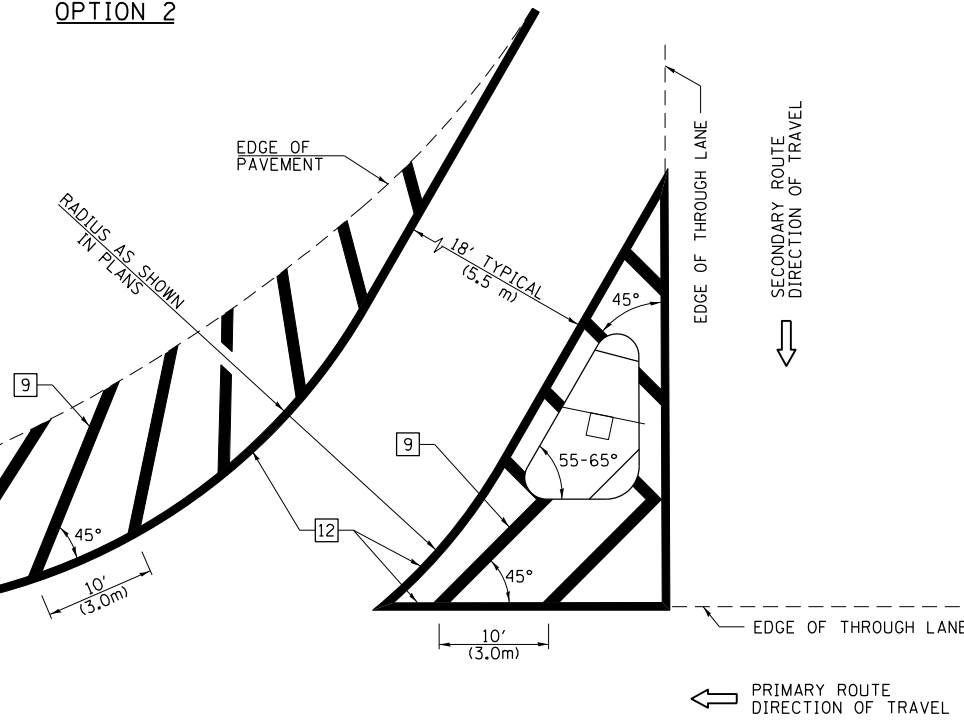
1. RAISED AND CORRUGATED MEDIANS SHALL BE OUTLINED WITH [2].
2. SOME OF THE INFORMATION INCLUDED WITH THIS DETAIL MAY NOT BE APPLICABLE TO THIS IMPROVEMENT.
3. PAVEMENT MARKINGS ARE TO BE EXTENDED THROUGH OMISSIONS WHEN APPLICABLE.
4. FINAL PAVEMENT MARKINGS SHALL BE IN PLACE PRIOR TO PLACING ANY RAISED REFLECTIVE PAVEMENT MARKERS.
5. THE FOLLOWING CRITERIA SHALL BE USED FOR SELECTING THE DIAGONAL PAVEMENT MARKING SPACING:

< 30 MPH (< 50 km/h)	15' (4.5 m)
30-45 MPH (50-75 km/h)	20' (6.0 m)
> 45 MPH (> 75 km/h)	30' (9.0 m)
6. THE USE OF ISLAND STRIPING OPTION 1 OR OPTION 2 SHALL BE AS SHOWN ON THE PLANS.

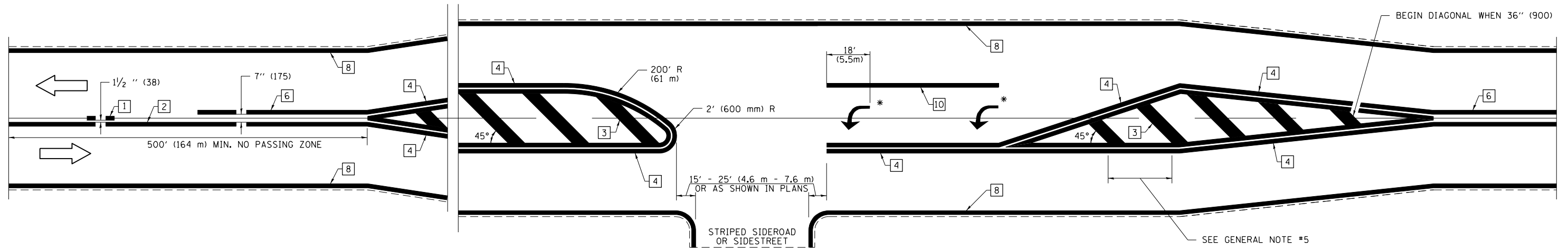
PAVEMENT MARKING LEGEND



OPTION 2



RURAL LEFT TURN STRIPING



* PLACE AN ARROW 18' (5.5 m) BACK FROM END OF THE SOLID WHITE LINE. PLACE ANOTHER ARROW EVEN WITH THE BEGINNING OF THE SOLID WHITE LINE. SPACE ADDITIONAL ARROWS EVENLY UP TO 80' (24.4 m) MAXIMUM SPACING. USE MINIMUM OF 2 ARROWS.

NOT TO SCALE

Note: All dimensions are in INCHES (millimeters) unless otherwise shown.

DISTRICT 7 DETAIL NO. 7800001

FILE NAME =	USER NAME = jessica.hille	DESIGNED -	REVISED - NAS 06/22
p:\idot-pw\bentley.com\PWIDOT\Documents\IDOT Offices\District 7\Projects\74832\CADD\Drawings\Drawings\74832-sht-details.dgn		CHECKED -	REVISED -
		DATE -	REVISED -

**STATE OF ILLINOIS
DEPARTMENT OF TRANSPORTATION**

**PAVEMENT MARKING AND RAISED REFLECTIVE PAVEMENT MARKERS
(RURAL & URBAN APPLICATIONS)**

SCALE: SHEET NO. 3 OF 4 SHEETS STA. TO STA.

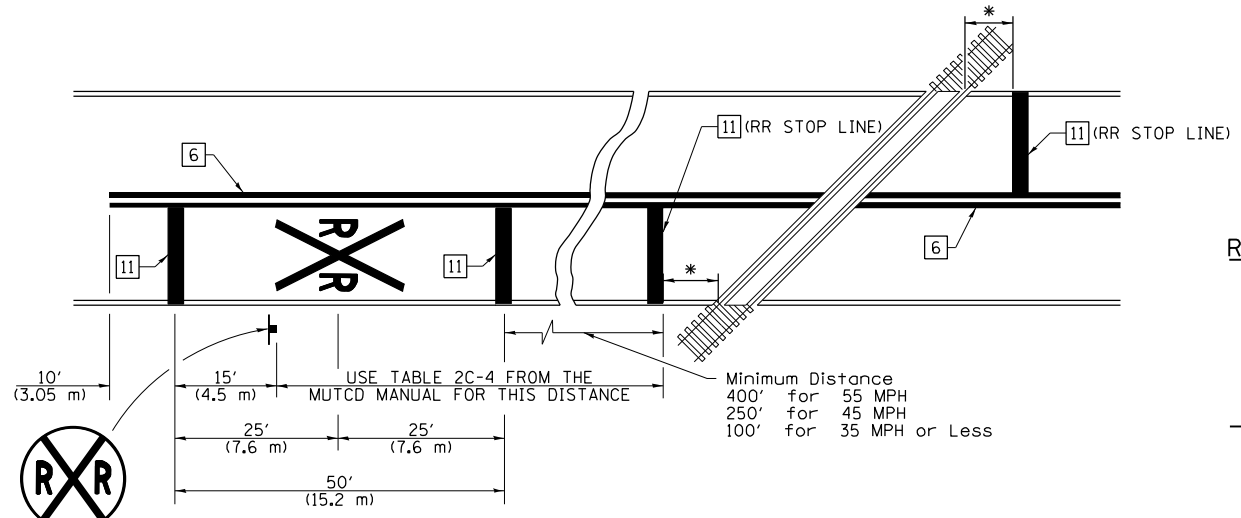
F.A.P. RTE.	SECTION	COUNTY	TOTAL SHEETS	SHEET NO.
332	07 BRIDGE REPAIR 2024-6	WABASH	23	22
CONTRACT NO. 74832				
ILLINOIS FED. AID PROJECT				

SUPPLEMENTAL PAVEMENT MARKING TREATMENT FOR RAILROAD-HIGHWAY GRADE CROSSING

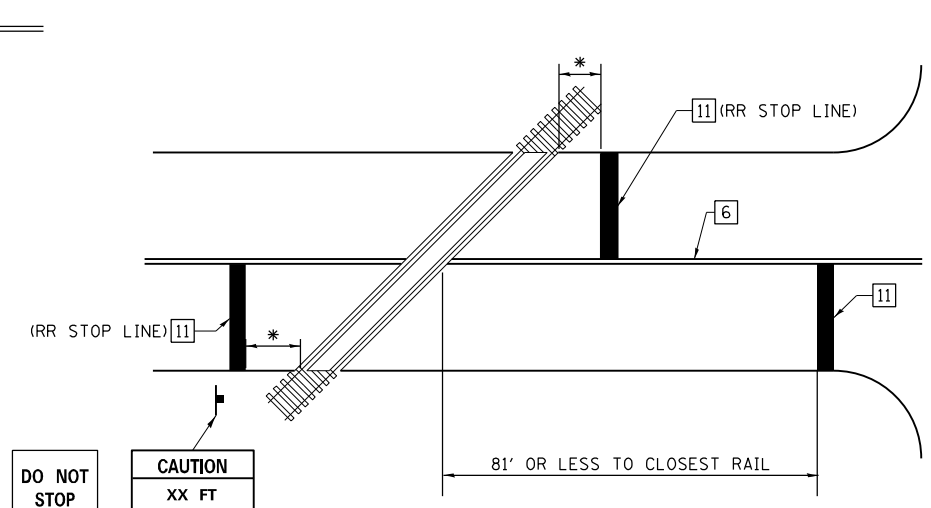
PAVEMENT MARKING LEGEND

- 1 4" (100) SKIP-DASH (YELLOW)
 - 2 4" (100) SOLID (YELLOW)
 - 3 12" (300) DIAGONAL (YELLOW)
 - 4 4" (100) DOUBLE YELLOW (NARROW)
 - 5 12" (300) SOLID WHITE
 - 6 4" (100) DOUBLE YELLOW (WIDE)
 - 7 6" (150) SKIP-DASH (WHITE)
 - 8 4" (100) SOLID (WHITE)
 - 9 12" (300) DIAGONAL (WHITE)
 - 10 6" (150) SOLID (WHITE)
 - 11 24" (600) STOP BAR (WHITE)
 - 12 8" (200) SOLID (WHITE)
 - 13 4" (100) PARKING WHITE
-

PAVEMENT MARKINGS AT RAILROAD-HIGHWAY GRADE CROSSING



RAILROAD CROSSING WITH NON-SIGNALIZED INTERSECTION

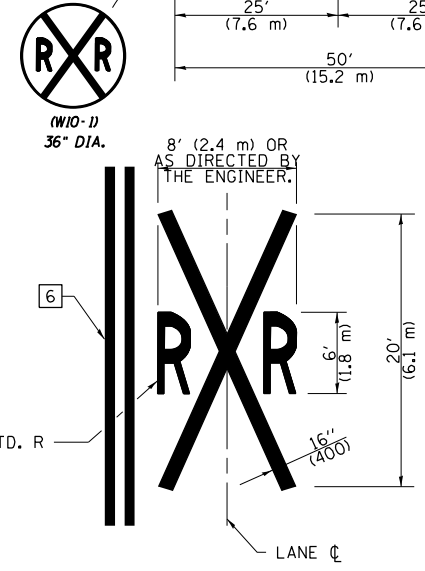


NOTES

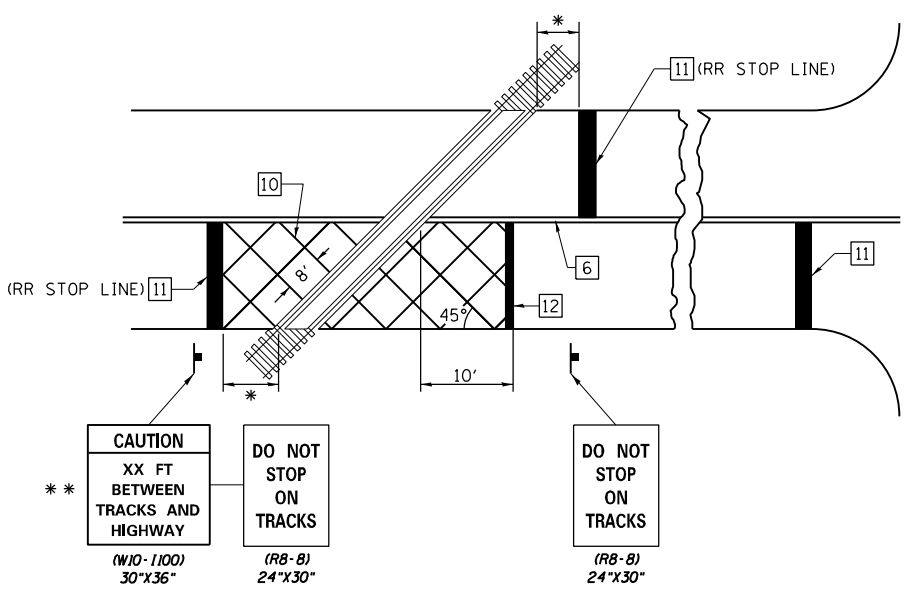
THE TRAVERSE SPREAD OF THE "X" MAY VARY ACCORDING TO LANE WIDTH.

ON MULTI-LANE ROADS, THE STOP LINES SHALL EXTEND ACROSS ALL APPROACH LANES AND SEPARATE RRR SYMBOLS SHALL BE PLACED ADJACENT TO EACH OTHER IN EACH LANE.

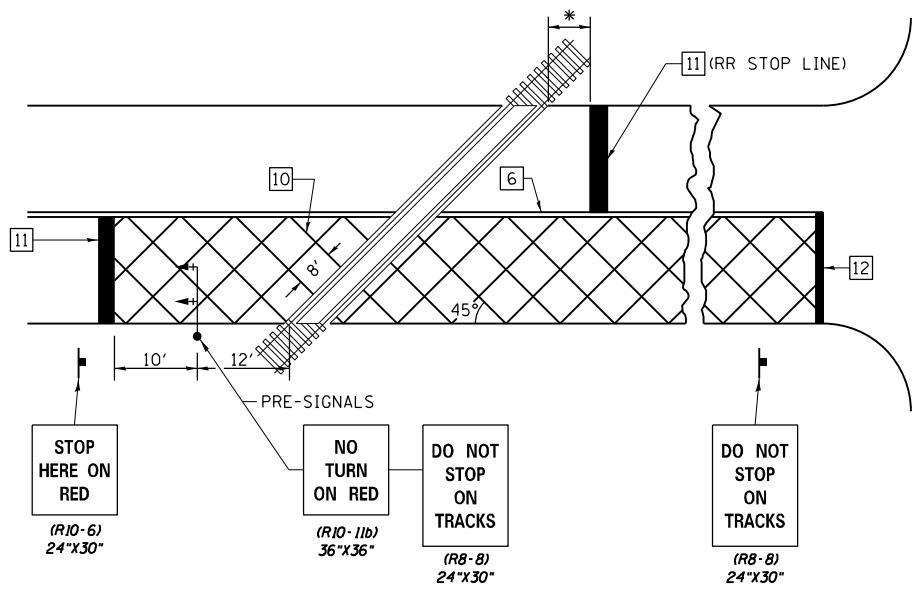
WHEN THE PAVEMENT MARKING SYMBOL IS USED, A PORTION OF THE SYMBOL SHOULD BE LOCATED DIRECTLY ADJACENT TO THE ADVANCE WARNING SIGN (W10-1) AS PLACED BY TABLE II-1, CONDITION B OF THE MUTCD.



RAILROAD CROSSING WITH INTERCONNECT ONLY

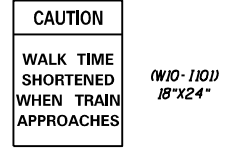


RAILROAD CROSSING WITH INTERCONNECT AND PRE-SIGNALS



GENERAL NOTES

- SUPPLEMENTAL PAVEMENT MARKINGS TO BE INSTALLED ONLY ON APPROACHES TO INTERSECTIONS CONTROLLED BY TRAFFIC SIGNALS WHICH ARE INTERCONNECTED WITH THE RAILROAD WARNING SIGNALS.
- EXTEND PAVEMENT MARKINGS TO THE INTERSECTION ONLY WHERE PRE-SIGNALS ARE USED.
- WHEN PEDESTRIAN SIGNALS ARE PRESENT WITH INTERCONNECTED SIGNALS, WARNING SIGN W10-1101 (18"X24") SHALL BE PLACED NEAR EACH PEDESTRIAN SIGNAL HEAD. COUNTDOWN PEDESTRIAN SIGNAL HEADS SHALL NOT BE UTILIZED ALONG WITH INTERCONNECTED SIGNALS.
- PLEASE REFER TO THE IDOT BUREAU OF OPERATION MEMO OPS T-06 DATED DECEMBER 1, 2020 FOR ADDITIONAL INFORMATION.



- * 15' FROM NEAR RAIL OR 8' FROM AND PARALLEL TO GATE IF PRESENT
- ** WARNING SIGN W10-1100 SHALL BE USED AS AN INTERIM MEASURE AT INTERCONNECTED SIGNAL LOCATIONS WHERE PRE-SIGNALS ARE TO BE INSTALLED IN THE FUTURE. THIS SIGN SHALL BE REMOVED WHEN THE PRE-SIGNALS ARE INSTALLED AND THE PAVEMENT MARKINGS ARE EXTENDED TO THE INTERSECTION.

NOT TO SCALE
Note: All dimensions are in INCHES (millimeters) unless otherwise shown.

DISTRICT 7 DETAIL NO. 7800001

FILE NAME =	USER NAME = jessica.hille	DESIGNED -	REVISED - NAS 06/22
pw:\idot-pw\bentley.com\PIDOT\Documents\IDOT Offices\District 7\Projects\74832\CADD\Drawings\Sheets\0774832-sht-details.dgn		CHECKED -	REVISED -
PLOT SCALE = 100.0000' / in.		DATE -	REVISED -
PLOT DATE = 10/11/2023			

STATE OF ILLINOIS
DEPARTMENT OF TRANSPORTATION

PAVEMENT MARKING AND RAISED REFLECTIVE PAVEMENT MARKERS
(RURAL & URBAN APPLICATIONS)

F.A.P. RTE.	SECTION	COUNTY	TOTAL SHEETS	SHEET NO.
332	07 BRIDGE REPAIR 2024-6	WABASH	23	23
CONTRACT NO. 74B32				
ILLINOIS FED. AID PROJECT				

SCALE: SHEET NO. 4 OF 4 SHEETS STA. TO STA.