

STATE OF ILLINOIS  
DEPARTMENT OF TRANSPORTATION

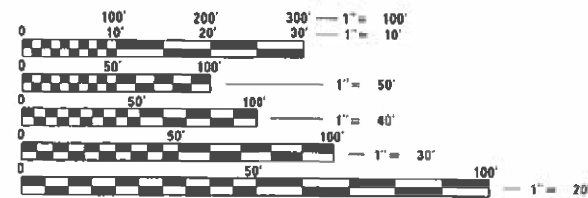
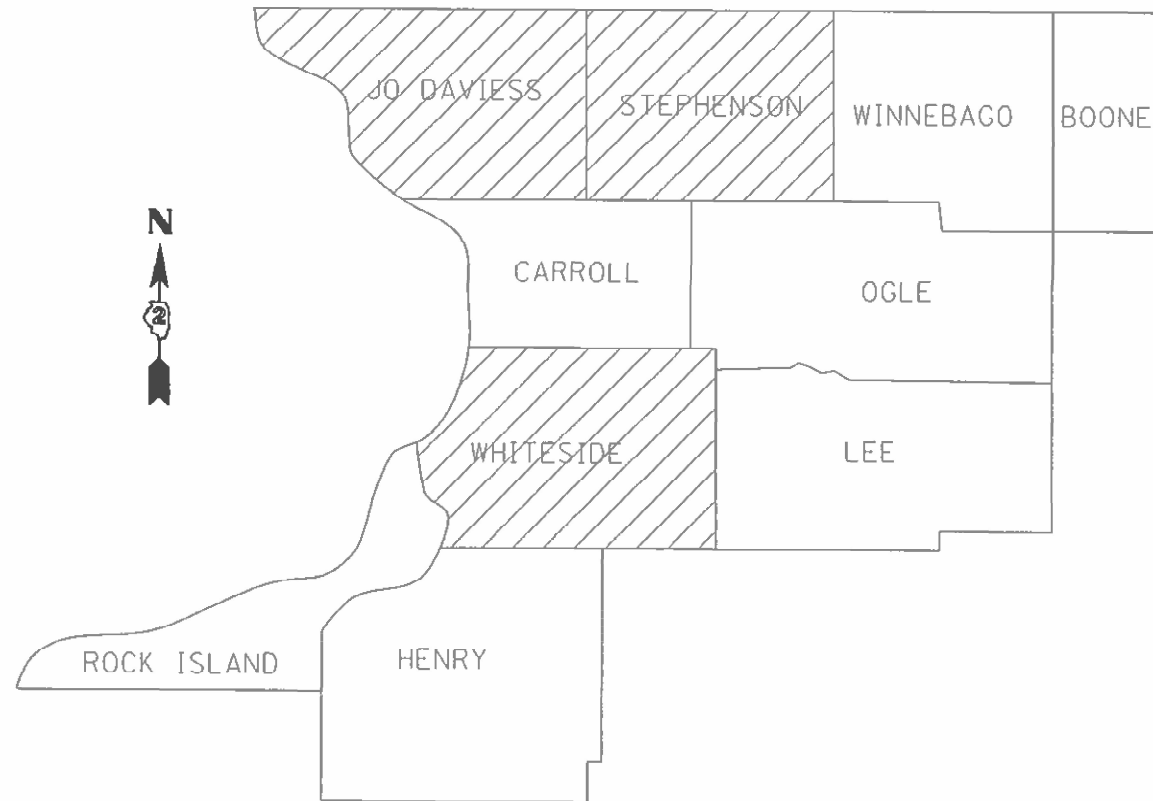
F.A. RTE.	SECTION	COUNTY	TOTAL SHEETS	SHEET NO.
VAR.	D2 BDS 2024-03	VARIOUS	10	1
		ILLINOIS	CONTRACT NO. 64S54	

FOR INDEX OF SHEETS, SEE SHEET NO. 2  
FOR HIGHWAY STANDARDS, SEE SHEET NO. 2

# PROPOSED HIGHWAY PLANS

VARIOUS ROUTES  
SECTION: D2 BDS 2024-03  
TYPE of IMPROVEMENT: BRIDGE DECK SEALING  
VARIOUS COUNTIES  
PROJECT: STP-ZKCX(023)  
C-92-121-23

D-92-077-23



FULL SIZE PLANS HAVE BEEN PREPARED USING STANDARD ENGINEERING SCALES. REDUCED SIZED PLANS WILL NOT CONFORM TO STANDARD SCALES. IN MAKING MEASUREMENTS ON REDUCED PLANS, THE ABOVE SCALES MAY BE USED.

J.U.L.I.E.  
JOINT UTILITY LOCATION INFORMATION FOR EXCAVATION  
1-800-892-0123  
OR 811

PROJECT ENGINEER: DAVID DOSS (815) 284-5416  
PROJECT MANAGER: MAHMOUD ETEMADI (815) 284-5393

CONTRACT NO. 64S54

DISTRICT 2

STATE OF ILLINOIS  
DEPARTMENT OF TRANSPORTATION

SUBMITTED Oct 4 2023  
Masood Ahmad  
REGIONAL ENGINEER

December 8, 2023  
S.A. Elk  
ENGINEER OF DESIGN AND ENVIRONMENT

December 8, 2023  
Steph M. Smith  
DIRECTOR OF HIGHWAYS PROJECT IMPLEMENTATION

PRINTED BY THE AUTHORITY  
OF THE STATE OF ILLINOIS

# INDEX OF SHEETS

- 1 COVER SHEET
- 2 INDEX OF SHEETS & HIGHWAY STANDARDS
- 2 GENERAL NOTES
- 3 SUMMARY OF QUANTITIES
- 4-5 SCHEDULE OF QUANTITIES
- 6 LOCATION MAP JODAVIESS COUNTY
- 7 LOCATION MAP STEPHENSON COUNTY
- 8 LOCATION MAP WHITESIDE COUNTY
- 9 SEALING DETAIL
- 10 TRAFFIC CONTROL AND PROTECTION AT TURN BAYS  
(TO REMAIN OPEN TO TRAFFIC} (DIST STD 94.2}

# GENERAL NOTES

THE CONCRETE SEALER SHALL BE APPLIED TO THE ENTIRE TOP SURFACE OF THE DECK, INCLUDING THE INSIDE FACES AND TOPS OF PARAPETS.

WATER BASED CONCRETE SEALERS WILL NOT BE ALLOWED.

WORK ON THIS PROJECT MAY POTENTIALLY CONFLICT WITH WORK ON OTHER CONTRACTS IN THE AREA. THE CONTRACTOR SHOULD BE PREPARED TO PLAN FOR POTENTIAL DELAYS AND COOPERATE WITH CONTRACTORS ON THE OTHER PROJECTS.

NO STREAM PERMITS HAVE BEEN PROCURED FOR THIS PROJECT. NONE ARE REQUIRED FROM THE REGULATORY AGENCIES AS LONG AS THERE IS NO DEBRIS FALLING OR BEING PLACED INTO THE STREAM. ANY TEMPORARY FILL IN THE STREAM OR THE COMPROMISING DIKE (IF APPLICABLE} WILL NOT BE ALLOWED. IF THE CONTRACTOR CHOOSES TO USE ALTERNATE/MODIFIED CONSTRUCTION METHOD(S} FROM THE AFOREMENTIONED, THEY WILL BE RESPONSIBLE FOR OBTAINING THE PROPER PERMITS. NO RELIEF OR COMPENSATION WILL BE GIVEN FOR ANY DELAYS, WORKING DAYS CHARGED, OR CALENDAR DAYS EXPIRED AS A RESULT OF THE LOSS OF TIME OR DELAY DURING THE RE-SUBMITTAL PROCESS TO PROCURE THE NECESSARY PERMIT(S} DUE TO THE CONTRACTOR CHOOSING ALTERNATE/MODIFIED CONSTRUCTION METHOD(S}. ABSOLUTELY NO CONSTRUCTION ACTIVITIES WILL TAKE PLACE WITHOUT THE PROPER PERMITS BEING SECURED.

# HIGHWAY STANDARDS

- 701006-05 OFF ROAD OPERATIONS, 2L, 2W, 15' TO 24" FROM PAVEMENT EDGE
- 701101-05 OFF ROAD OPERATIONS, MULTILANE, 15' TO 24" FROM PAVEMENT EDGE
- 701201-05 LANE CLOSURE, 2L, 2W, DAY ONLY, FOR SPEEDS  $\geq$  TO 45 MPH
- 701301-04 LANE CLOSURE, 2L, 2W, SHORT TIME OPERATIONS
- 701400-12 APPROACH TO LANE CLOSURE, FREEWAY/EXPRESSWAY
- 701406-13 LANE CLOSURE, FREEWAY/EXPRESSWAY, DAY OPERATIONS ONLY
- 701411-09 LANE CLOSURE, MULTILANE, AT ENTRANCE OR EXIT RAMP, FOR SPEEDS  $\diamond$  45 MPH
- 701421-08 LANE CLOSURE, MULTILANE, DAY OPERATIONS ONLY, FOR SPEEDS  $\geq$  45 MPH TO 55 MPH
- 701426-09 LANE CLOSURE, MULTILANE, INTERMITTENT OR MOVING OPER., FOR SPEEDS  $\diamond$  45
- 701456-05 PARTIAL EXIT RAMP CLOSURE FREEWAY/EXPRESSWAY
- 701501-06 URBAN LANE CLOSURE, 2L, 2W, UNDIVIDED
- 701801-06 SIDEWALK, CORNER OR CROSSWALK CLOSURE
- 701901-09 TRAFFIC CONTROL DEVICES

MODEL: Default  
 FILE: Mainfile  
 P:\114026-09-bentley.com\PROJECTS\Documents\DOT Offices\District 2\Projects\Operations\Bridges\Section\Bridges Deck Sealing Contracts\2024\64554\CADD\64554-shr-cover.dgn

USER NAME = David.Doss	DESIGNED - _____	REVISED - _____	STATE OF ILLINOIS DEPARTMENT OF TRANSPORTATION	INDEX OF SHEETS, HIGHWAY STANDARDS & GENERAL NOTES	F.A. RTE.:	SECTION	COUNTY	TOTAL SHEETS	SHEET NO.
DRAWN - _____	REVISED - _____	VAR.			02 BOS 2024-03	VARIOUS	10	2	
PLOT SCALE = 40,0000 ' / In.	CHECKED - _____	REVISED - _____			CONTRACT NO. 64554				
PLOT DATE = Aug-14-2023 09:34:21 AM	DATE - _____	REVISED - _____			ILLINOIS FED. AID PROJECT				
SCALE: _____					SHEET _____ OF _____ SHEETS		STA. _____ TO STA. _____		

# SUMMARY OF QUANTITIES

CODE NUMBER	ITEM	UNIT	JO DAVIESS COUNTY		STEPHENSON COUNTY				WHITESIDE COUNTY		STP
			0047 80% FEDERAL 20% STATE RURAL	0047 80% FEDERAL 20% STATE RURAL	0047 80% FEDERAL 20% STATE RURAL	0047 80% FEDERAL 20% STATE URBAN	0047 80% FEDERAL 20% STATE RURAL	0047 100% FEDERAL RURAL	0047 80% FEDERAL 20% STATE RURAL	0047 90% FEDERAL 10% STATE RURAL	TOTAL QUANTITY
67100100	MOBILIZATION	L SUM	0.13	0.05	0.37	0.11	0.18	0.02	0.11	0.03	1
70100310	TRAFFIC CONTROL AND PROTECTION, STANDARD 701421	L SUM				0.67	0.33				1
70100420	TRAFFIC CONTROL AND PROTECTION, STANDARD 701411	EACH			4					1	5
70100450	TRAFFIC CONTROL AND PROTECTION, STANDARD 701201	L SUM	0.15	0.10	0.30		0.25	0.05	0.15		1
70100700	TRAFFIC CONTROL AND PROTECTION, STANDARD 701406	L SUM	0.05		0.75	0.10				0.10	1
70100825	TRAFFIC CONTROL AND PROTECTION, STANDARD 701456	L SUM			1						1
70102620	TRAFFIC CONTROL AND PROTECTION, STANDARD 701501	L SUM					1				1
70102640	TRAFFIC CONTROL AND PROTECTION, STANDARD 701801	L SUM			1						1
X5870015	BRIDGE DECK CONCRETE SEALER	SQ FT	28,886	6,749	316,256	50,797	25,495	447	20,852	110,400	559,882
	COLUMN #'s TO CROSS REFERENCE WITH SCHEDULE OF QUANTITIES		#1	#2	#3	#4	#5	#6	#7	#8	

MODEL: Default  
 FILE NAME: \\w:\ilgdot-pw-bentley.com\PI\DOT\Documents\DOT\_Offices\District 2\Projects\Operations\Bridges\_Section\Bridges\_Deck\_Sealing\_Contracts\2024\64554\CD\64554-shr-cover.dgn

USER NAME = David.Doss	DESIGNED - _____	REVISED - _____
	DRAWN - _____	REVISED - _____
PLOT SCALE = 40,0000' / 1"	CHECKED - _____	REVISED - _____
PLOT DATE = Oct-11-2023 08:34:39 AM	DATE - _____	REVISED - _____

STATE OF ILLINOIS  
DEPARTMENT OF TRANSPORTATION

SUMMARY OF QUANTITIES

SCALE: \_\_\_\_\_ SHEET \_\_\_\_\_ OF \_\_\_\_\_ SHEETS STA. \_\_\_\_\_ TO STA. \_\_\_\_\_

SECTION	COUNTY	SHEET
VAR. 02 BOS 2024-03	VARIOUS	10 3
ILLINOIS FED. AID PROJECT		CONTRACT NO. 64554

# SCHEDULE OF QUANTITIES

SOQ COLUMN #	SN	Facility Carried	FeatureCrossed	Location	Total Length (Ft.)	Bridge Rdwy Width(Ft.)	Parapet (Ft.)	Area to be sealed (Sq. Ft.)	Traffic Control Standard
1	0430037	ILL 84	IRISH HOLLOW CREEK	2.3 MI S US 20	209.1	32	7.5	8,259	701201
2	0430045	IL 78	TRIB S FK APPLE RIV.	4.4 MI. N. US 20	76.5	31.8	7.5	3,006	701201
2	0430046	IL 78	S FORK APPLE RIVER	4.2 MI. N. US 20	95	31.9	7.5	3,743	701201
1	0430047	US 20 WB	SINSINAWA RIVER	2 MI. W. OF IL 84	290	38.1	7.5	13,224	701400 & 701406 OR 701426
1	0430078	ILL RT 84	APPLE RIVER TRIB.	2.0 MI S. HANOVER	135.9	32	7.5	5,368	701201
1	0430079	IL 84	DUKE CREEK	N EDGE HANOVER	51	32	7.5	2,015	701201
5	0890009	US 20 BR	SMALL CREEK	1.5 MI E FREEPORT	41.4	68	7.5	3,126	701421
3	0890014	US 20 EB	SUMNER CREEK	1.2MI W WINNEBAGO	103	40	7.5	4,893	701400 & 701406 OR 701426
3	0890042	US 20	PECATONICA RIVER	NE OF FREEPORT	943	42.8	7.5	47,433	701400 & 701406 OR 701426
3	0890043	IL 75	CEDAR CREEK	N EDGE OF CEDARVILLE	313	32.4	7.5	12,489	701201,701801
6	0890044	HARLEM CENTER RD	US20 FREEPORT BYPASS	3 MI W OF IL 26	230.7	28	7.5	447	701201
3	0890045	US20 EB	PECATONICA RIVER	2.5 MI W OF IL 26	758	44.3	7.5	39,264	701400 & 701406 OR 701426
3	0890048	US 20 EB	IL 75	NE OF FREEPORT	185	44	7.5	9,528	701400,701406,701411
4	0890052	ILL 26	CCP RR	0.2 MI N OF US 20 BR	213.9	90	7.5	20,855	701421
3	0890054	US 20 WB	WICKHAM CREEK	4.0 MI W WINN CO LN	32	40	7.5	1,520	701400 & 701406 OR 701426
3	0890055	US 20 EB	BIKE TRAIL	1.75 MI W OF IL 26	147	44	7.5	7,571	701400 & 701406 OR 701426
4	0890056	US 20 EB	ILL RT 26	1 MI N FREEPORT	168.8	40	7.5	8,018	701400 & 701406 OR 701426
4	0890057	US 20 WB	ILL RT 26	1 MI N FREEPORT	168.8	40.4	7.5	8,086	701400 & 701406 OR 701426
3	0890058	US 20 EB	SILVER CREEK	0.5 MI E SPRINGFLD RD	114.6	44.2	7.5	5,925	701411
3	0890059	US 20 WB	SILVER CREEK	0.5 MI E SPRINGFLD RD	114.6	46.3	7.5	6,165	701411
3	0890060	RAMP TO US BUS 20	SILVER CREEK	0.5 MI E SPRINGFLD RD	115.5	26	7.5	3,869	701456
3	0890061	RAMP TO US BUS 20	US20 FREEPORT BYPASS	0.3 MI E SPRINGFLD RD	329.3	26	7.5	11,032	701456
4	0890062	IL 26	YELLOW CREEK	S EDGE OF FREEPORT	154.1	82.3	7.5	13,838	701421
3	0890064	IL 26	BRUSH CREEK	1.7 MI S ORANGEVILLE	149	44.3	7.5	7,718	701201
5	0890066	ILL 73	CEDAR CREEK	S EDGE OF WINSLOW	68	32.2	7.5	2,700	701501
5	0890068	IL 73	TRIB. YELLOW CREEK	0.5 MI S OF US 20	73	31.9	7.5	2,876	701201
5	0890069	IL 73	YELLOW CREEK	0.5 MI N PEARL CITY	134.5	36.8	7.5	5,958	701201

MODEL: Default  
 FILE: \\adlfpc-pw-beadley.com\P\INDOT\Documents\DOT Office\Director\_2\Project\Operations\Bridges\Section\Bridges\Deck Sealing\_Contract\2024\64554\CADD\64554-130-cover.dgn

USER NAME = David.Doss	DESIGNED - _____	REVISED - _____
	DRAWN - _____	REVISED - _____
PLOT SCALE = 40,0000 * / in.	CHECKED - _____	REVISED - _____
PLOT DATE = Oct-11-2023 08:35:17 AM	DATE - _____	REVISED - _____

**STATE OF ILLINOIS  
DEPARTMENT OF TRANSPORTATION**

**SCHEDULE OF QUANTITIES**

SCALE: \_\_\_\_\_ SHEET \_\_\_\_ OF \_\_\_\_ SHEETS STA. \_\_\_\_\_ TO STA. \_\_\_\_\_

F.A. RTE.	SECTION	COUNTY	TOTAL SHEETS	SHEET NO.
VAR.	D2 BDS 2024-03	VARIOUS	10	4
CONTRACT NO. 64554				
ILLINOIS FED. AID PROJECT				



# SCHEDULE OF QUANTITIES

SOQ COLUMN #	SN	Facility Carried	FeatureCrossed	Location	Total Length (Ft.)	Bridge Rdwy Width(Ft.)	Parapet (Ft.)	Area to be sealed (Sq. Ft.)	Traffic Control Standard
5	0890070	IL 73	SPRING CREEK	1.5 MI S PEARL CITY	61.2	31.8	7.5	2,405	701201
3	0890071	IL 26	RICHLAND CREEK	0.5MI. S. ORANGEVILLE	525	40	7.5	24,938	701201
3	0890072	IL 26	DRAINAGE DITCH	2.6 MI N CEDARVILLE	57	40	7.5	2,708	701201
3	0890074	US 20 WB	SUMNER CREEK	1.2 MI W WINN. CO LN	103	40	7.5	4,893	701400 & 701406 OR 701426
3	0890075	US 20	YELLOW CREEK	0.1 MI E JO DAV. CO.	94.3	40	7.5	4,479	701201
5	0890076	US BUS 20	PRESTON CREEK	1 MI. W. FREEPORT	76	36	7.5	3,306	701201
3	0890077	US 20	CCP RAILROAD	2 MI. E. OF ELROY	338.7	57	7.5	21,846	701201
3	0890079	US 20 EB	WICKHAM CREEK	4 MI W. WINNEBAGO	51.8	39.4	7.5	2,429	701400 & 701406 OR 701426
3	0890080	US 20 WB	IL RT 75	NE OF FREEPORT	179.5	40	7.5	8,526	701400,701406,701411
3	0890081	US 20 WB	PECATONICA RIVER	NE OF FREEPORT	971.8	40	7.5	46,161	701400 & 701406 OR 701426
3	0890082	US 20 WB	PECATONICA RIVER	2.5 MI W IL RTE 26	758	40	7.5	36,005	701400 & 701406 OR 701426
3	0890083	US 20 WB	BIKE TRAIL	1.75 MI W OF IL 26	144.5	40	7.5	6,864	701400 & 701406 OR 701426
5	0890084	ILL RT 75	ROCK RUN CREEK	1.3 MI E ROCK CITY	117.8	36	7.5	5,124	701201
7	0980018	ILL 40	GREEN RIVER	1 MI S DEER GROVE	186	36	7.5	8,091	701201
8	0980079	I-88 EB	ROCK RIVER	3 MI W ROCK FALLS	1200	38.5	7.5	55,200	701400 & 701406 OR 701426
8	0980080	I-88 WB	ROCK RIVER	3 MI W ROCK FALLS	1200	38.5	7.5	55,200	701400,701406,701411
7	0980103	IL 78	COON CREEK	2 MI S PROPHETSTOWN	55.5	32	7.5	2,192	701201
7	0980117	IL 40	ELKHORN CREEK	2 MI N STERLING	222.5	40	7.5	10,569	701201

MODEL: Default  
 FILE: \\naulst-pw-beadley.com\P\W\DOT\Documents\DOT Office\District 2\Project\Operations\Bridge\_Section\Bridge\_Deck\_Sealing\_Contract\2024\64554\CADD\64554-1-1-23-contract.dgn

USER NAME = David.Doss	DESIGNED - _____	REVISED - _____
	DRAWN - _____	REVISED - _____
PLOT SCALE = 40,0000 * / in.	CHECKED - _____	REVISED - _____
PLOT DATE = Oct-11-2023 08:35:45 AM	DATE - _____	REVISED - _____

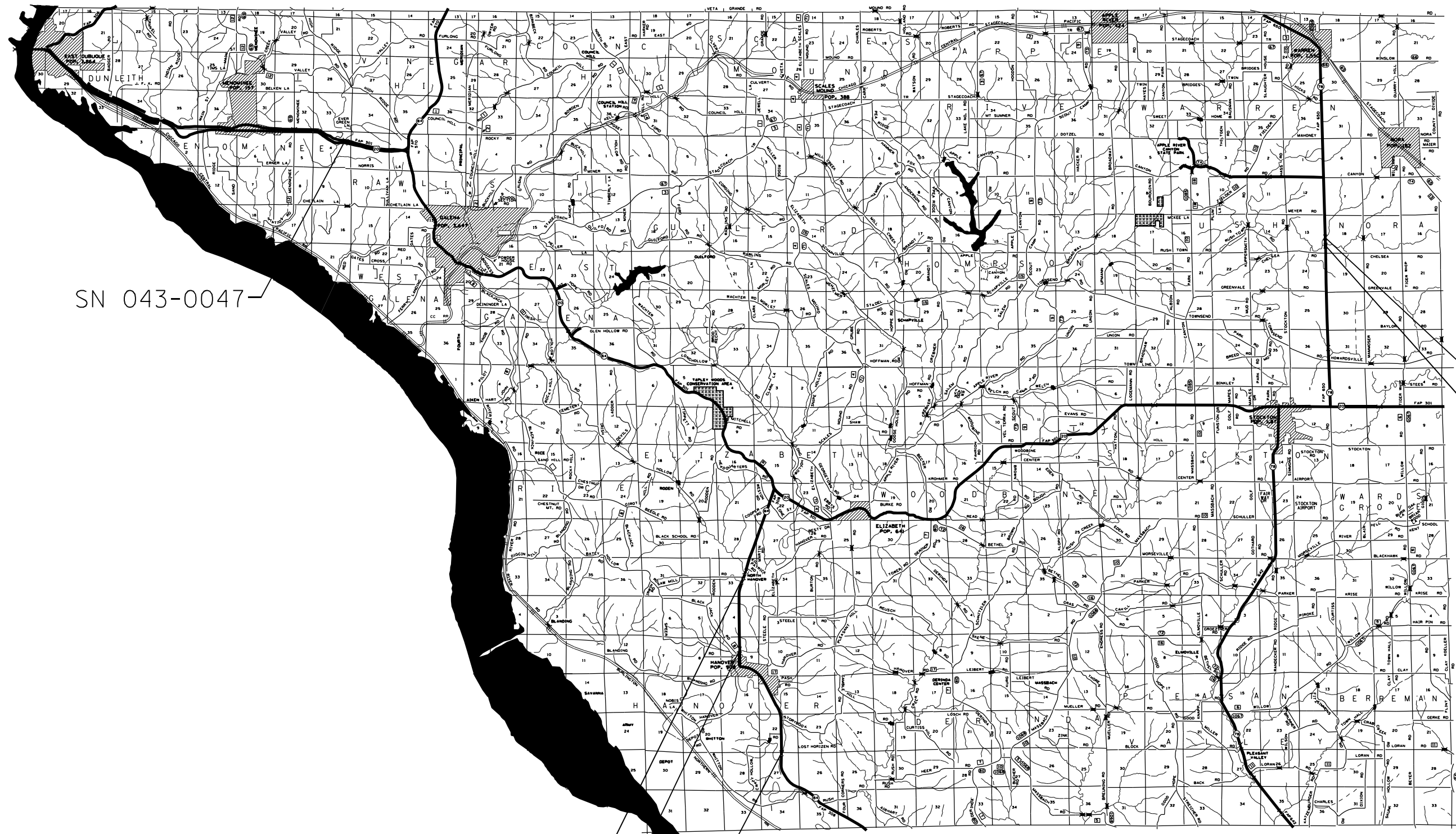
**STATE OF ILLINOIS  
DEPARTMENT OF TRANSPORTATION**

**SCHEDULE OF QUANTITIES**

SCALE: \_\_\_\_\_ SHEET \_\_\_\_ OF \_\_\_\_ SHEETS STA. \_\_\_\_\_ TO STA. \_\_\_\_\_

F.A. RTE.	SECTION	COUNTY	TOTAL SHEETS	SHEET NO.
VAR.	D2 BDS 2024-03	VARIOUS	10	5
CONTRACT NO. 64554				
ILLINOIS FED. AID PROJECT				

# LOCATION MAP JODAVIESS COUNTY



SN 043-0047

SN 043-0045

SN 043-0046

SN 043-0078

SN 043-0079

SN 043-0037

MODEL: Default  
 FILE NAME: p:\build\aw\_beaufay.com\PI\DOT\Documents\1\DOT Office\Dir\Dir\_2\Project\Operations\Bridg Section\Bridg Deck Sealing Contract\2024\64554\CD\64554-the-cover.dgn

USER NAME = David.Doss	DESIGNED - _____	REVISED - _____
	DRAWN - _____	REVISED - _____
PLOT SCALE = 40,0000 * / in.	CHECKED - _____	REVISED - _____
PLOT DATE = Aug-14-2023 09:34:50 AM	DATE - _____	REVISED - _____

**STATE OF ILLINOIS  
DEPARTMENT OF TRANSPORTATION**

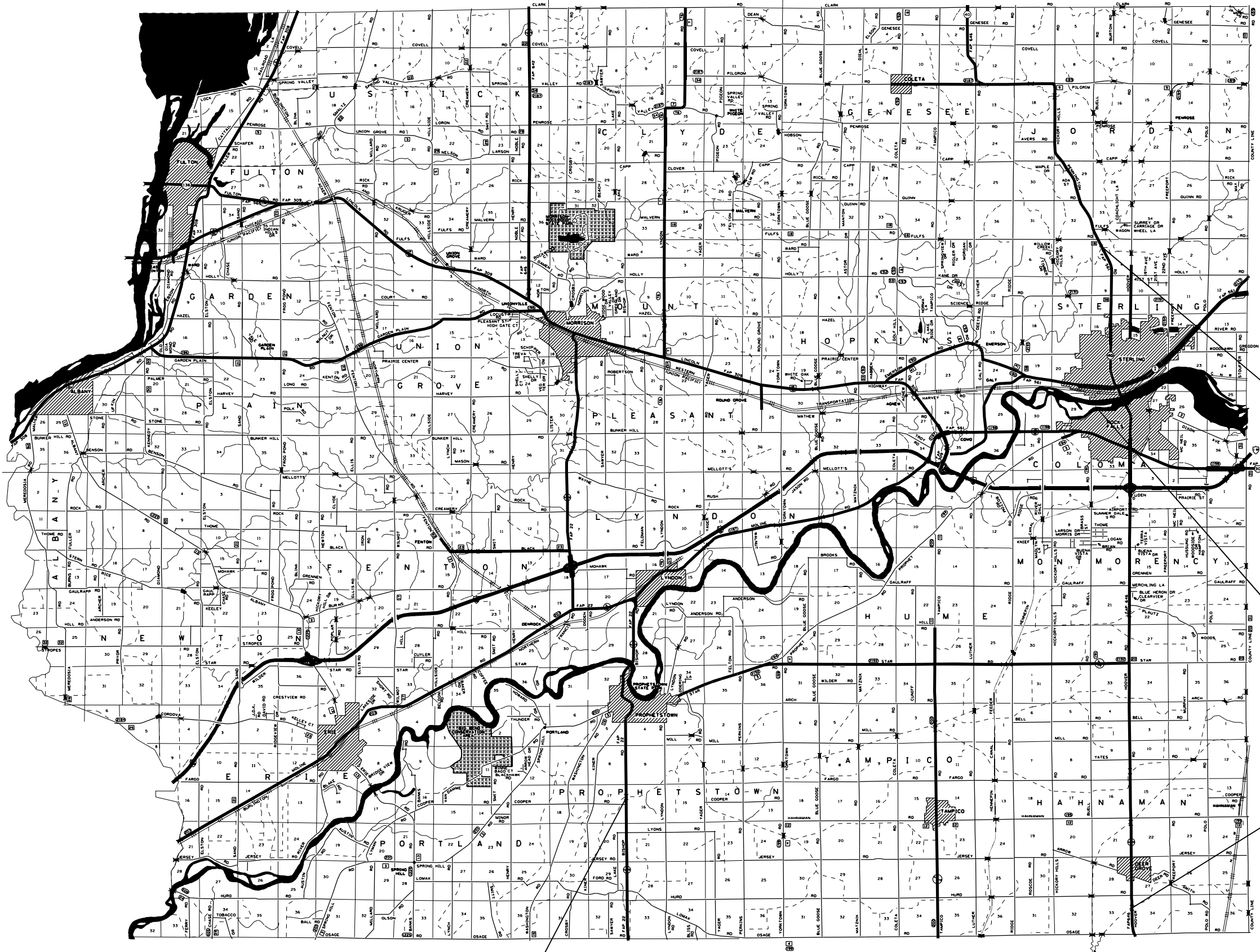
**LOCATION MAP JODAVIESS COUNTY**

SCALE: \_\_\_\_\_ SHEET \_\_\_\_\_ OF \_\_\_\_\_ SHEETS STA. \_\_\_\_\_ TO STA. \_\_\_\_\_

F.A. RTE.	SECTION	COUNTY	TOTAL SHEETS	SHEET NO.
VAR.	D2 BDS 2024-03	VARIOUS	10	6
CONTRACT NO. 64554				
ILLINOIS FED. AID PROJECT				



# LOCATION MAP WHITESIDE COUNTY



SN 098-0117

SN 098-0051  
SN 098-0052

SN 098-0018

SN 098-0103

MODEL: Default  
 FILE: Mainfile.psd  
 PROJECT: OperationsBridge - Section18-edge Deck - Sealing Contract:2024164554-1CADD164554-18-cover.dwg  
 PLOT DATE = Aug-14-2023 09:35:03 AM

USER NAME = David.Doss	DESIGNED -	REVISED -
	DRAWN -	REVISED -
PLOT SCALE = 40,0000 * / in.	CHECKED -	REVISED -
PLOT DATE = Aug-14-2023 09:35:03 AM	DATE -	REVISED -

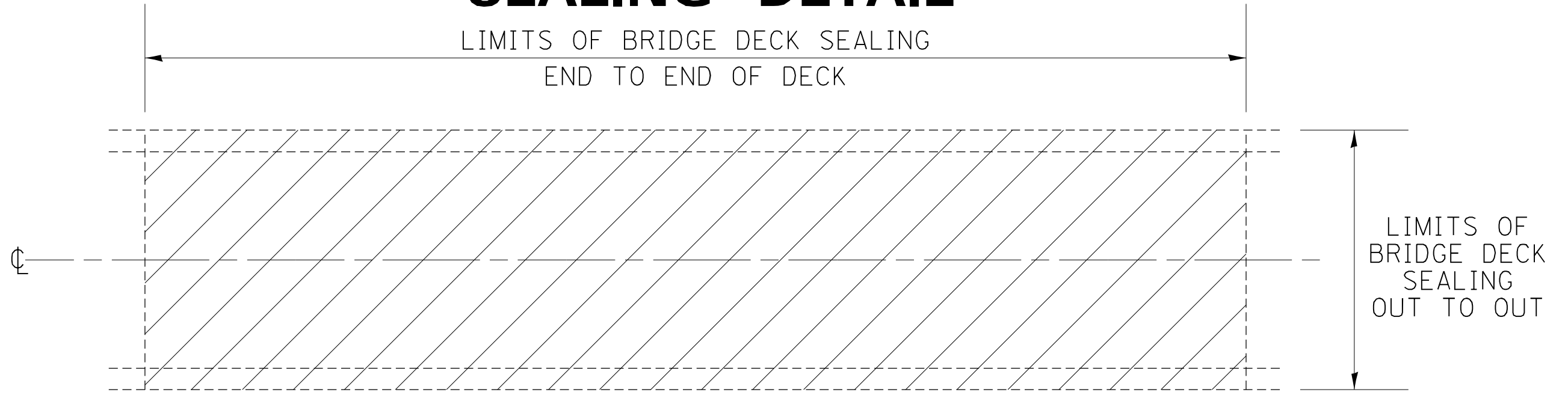
STATE OF ILLINOIS  
DEPARTMENT OF TRANSPORTATION

LOCATION MAP WHITESIDE COUNTY

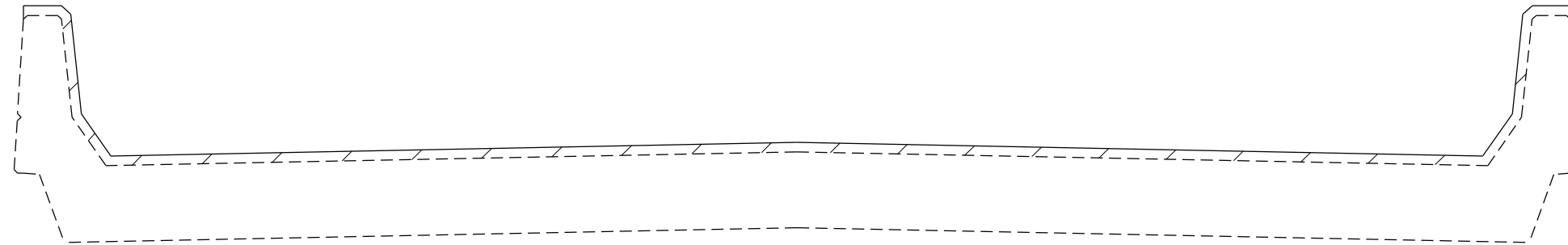
SCALE: \_\_\_\_\_ SHEET \_\_\_\_\_ OF \_\_\_\_\_ SHEETS STA. \_\_\_\_\_ TO STA. \_\_\_\_\_

F.A. RTE.	SECTION	COUNTY	TOTAL SHEETS	SHEET NO.
VAR.	D2 BDS 2024-03	VARIOUS	10	8
			CONTRACT NO. 64554	
ILLINOIS FED. AID PROJECT				

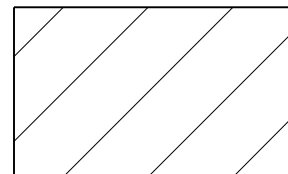
# SEALING DETAIL



PLAN VIEW



CROSS SECTION WITH PARAPET



AREA TO BE SEALED

MODEL: Default  
 FILE: \\nautilus.pwd.state.il.gov\pww\DOT\Documents\DOT Offices\District 2\Project\Operations\Bridge Section\Bridge Deck Sealing Contract\2024\64554\CADD\64554-shc-cover.dgn

USER NAME = David.Doss	DESIGNED - _____	REVISED - _____
PLOT SCALE = 40,0000 * / in.	DRAWN - _____	REVISED - _____
PLOT DATE = Aug-14-2023 09:35:09 AM	CHECKED - _____	REVISED - _____
	DATE - _____	REVISED - _____

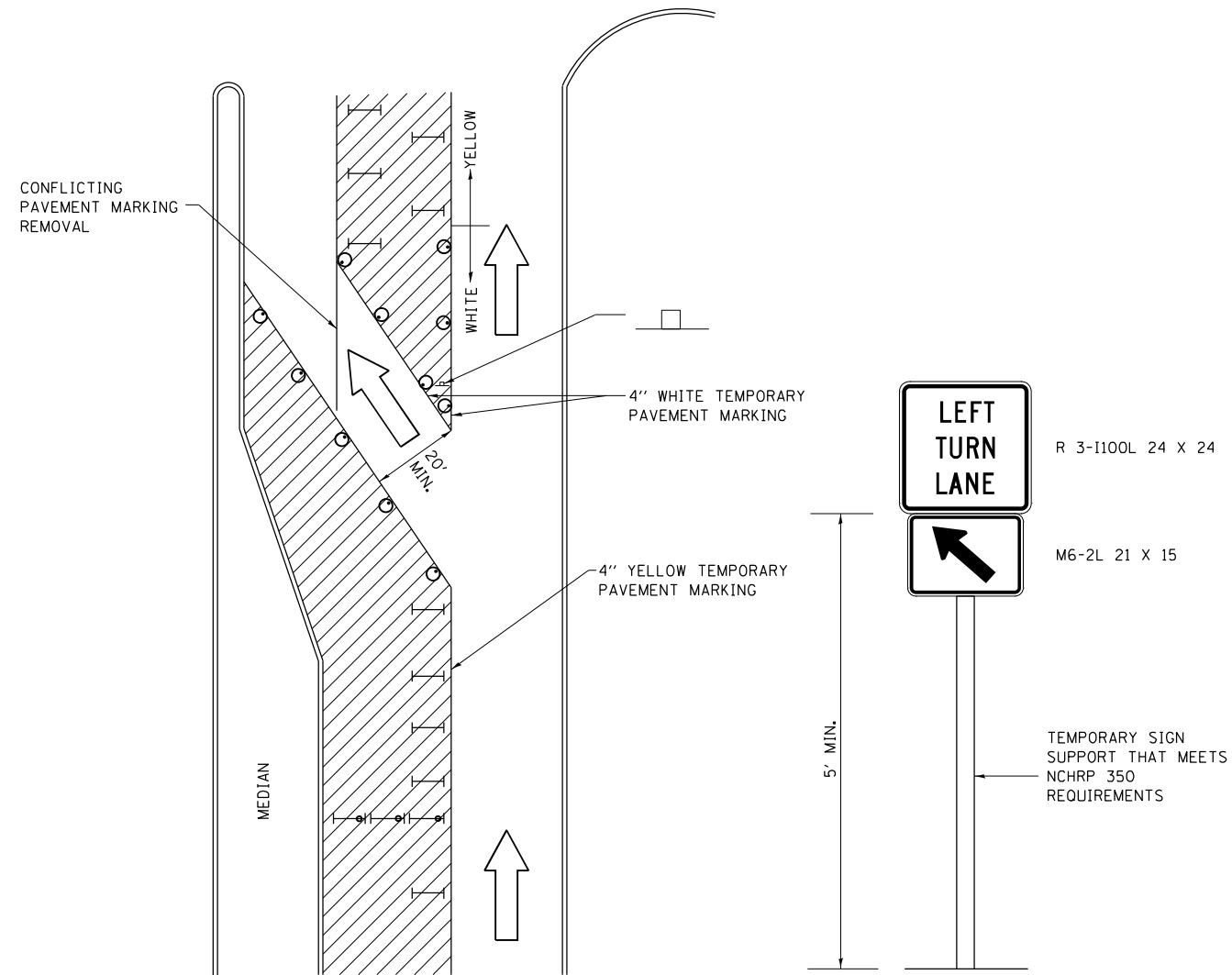
**STATE OF ILLINOIS  
DEPARTMENT OF TRANSPORTATION**

**SEALING DETAIL**


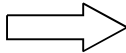
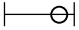



SCALE: \_\_\_\_\_ SHEET \_\_\_\_ OF \_\_\_\_ SHEETS STA. \_\_\_\_\_ TO STA. \_\_\_\_\_

F.A. RTE.	SECTION	COUNTY	TOTAL SHEETS	SHEET NO.
VAR.	D2 BDS 2024-03	VARIOUS	10	9
			CONTRACT NO. 64554	
ILLINOIS FED. AID PROJECT				

# TRAFFIC CONTROL AND PROTECTION AT TURN BAYS (TO REMAIN OPEN TO TRAFFIC)



## LEGEND

-  WORK AREA
-  LANE OPEN TO TRAFFIC
-  TYPE I OR II BARRICADE OR DRUM WITH FLASHING BURNING LIGHT
-  DRUM OR BARRICADE WITH STEADY BURN LIGHT
-  SIGN (SEE DETAIL)
-  TYPE I OR II CHECK BARRICADE WITH STEADY LIGHT BURN

REVISED - 10-14-11

## GENERAL NOTES

CONES MAY BE SUBSTITUTED FOR BARRICADES OR DRUMS AT HALF THE SPACING DURING DAY OPERATIONS. CONES SHALL BE A MINIMUM OF 28 IN HEIGHT.

STEADY BURNING LIGHTS WILL NOT BE REQUIRED ON BARRICADES OR DRUMS FOR DAY OPERATIONS. ALL LIGHTS WILL BE MONODIRECTIONAL.

TEMPORARY PAVEMENT MARKING SHALL BE PLACED THROUGHOUT THE BARRICADED AREA OF EACH BAY WHERE THE CLOSURE TIME IS GREATER THAN FOURTEEN DAYS.

THIS APPLICATION ALSO APPLIES WHEN WORK IS BEING PERFORMED IN THE RIGHT LANE(S) AND THE RIGHT TURN BAY IS TO REMAIN OPEN. UNDER THIS CONDITION, "RIGHT TURN LANE" R3-100 24 X 24 AND M6-2R 21 X 15 SHALL BE USED.

THESE CONTROLS SHALL SUPPLEMENT MAINLINE TRAFFIC CONTROL FOR LANE CLOSURES. LONGITUDINAL DIMENSIONS MAY BE ADJUSTED TO FIT FIELD CONDITIONS.

TRAFFIC CONTROL AND PROTECTION AT TURN BAYS (TO REMAIN OPEN TO TRAFFIC) SHALL BE INCLUDED IN THE COST SPECIFIED TRAFFIC CONTROL STANDARDS OR ITEMS.

ALL DIMENSIONS ARE IN INCHES UNLESS OTHERWISE NOTED.

REVISED - ____	<b>REGION 2 / DISTRICT 2 STANDARD</b>	F.A. RTE.	SECTION	COUNTY	TOTAL SHEETS	SHEET NO.	
REVISED - ____		VAR.	D2 BDS 2024-03	VARIOUS	10	10	
REVISED - ____		CONTRACT NO. 64554					
REVISED - ____		SCALE: 40,000' / 1" = 100'	SHEET NO. ____ OF ____ SHEETS	STA. _____ TO STA. _____	FED. ROAD DIST. NO. _ [ILLINOIS] FED. AID PROJECT		
REVISED - ____							