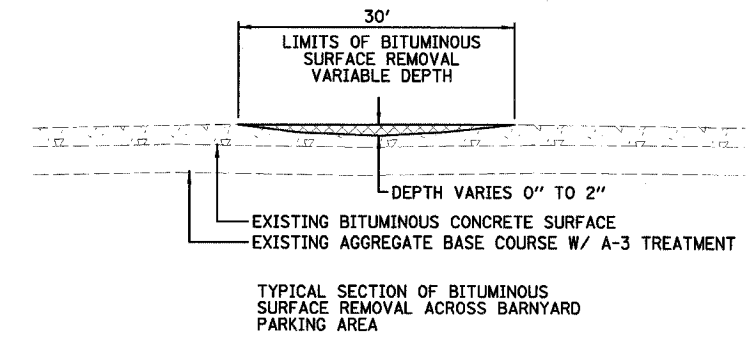
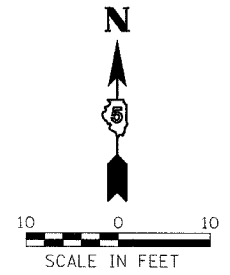
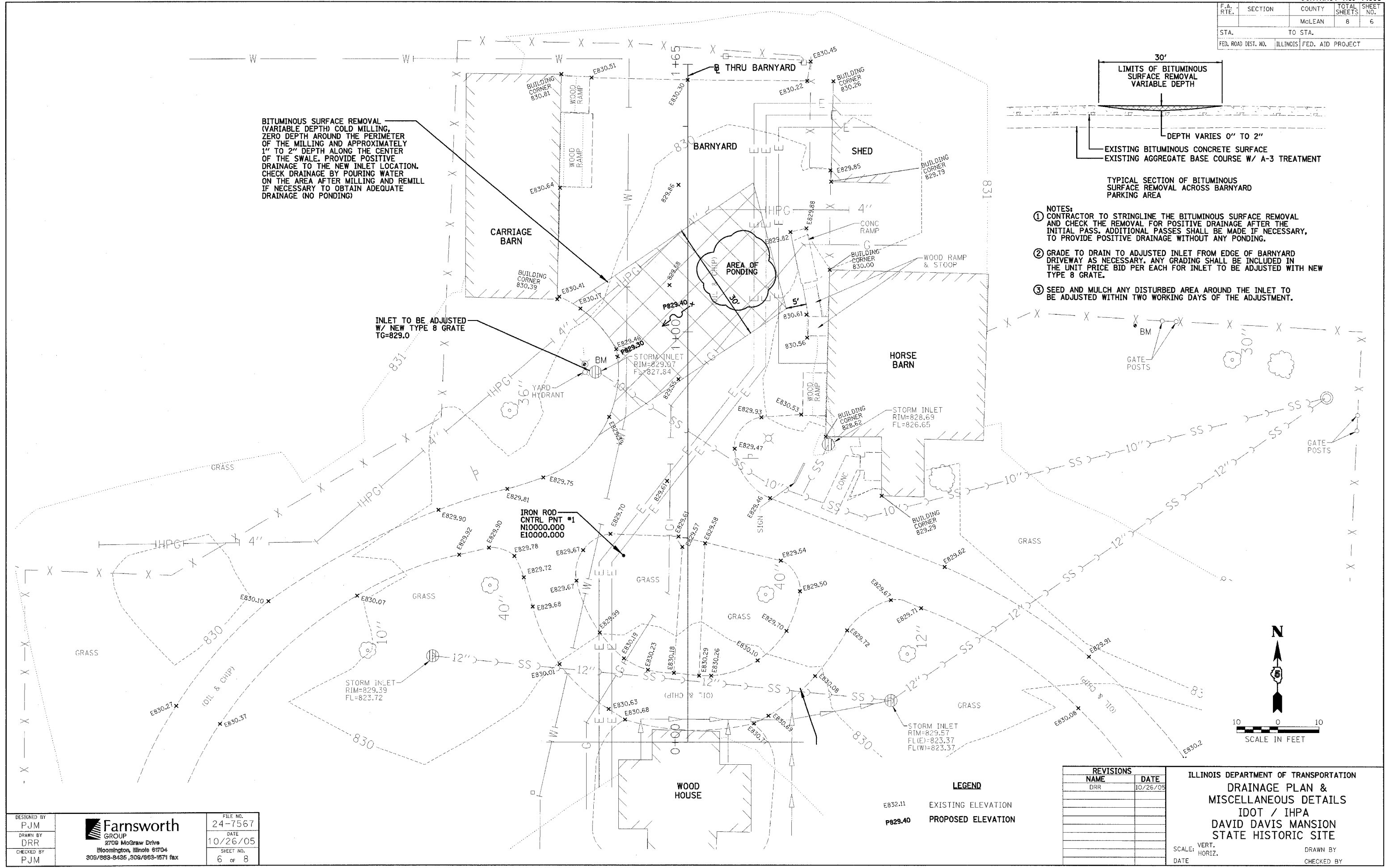


F.A. RTE.	SECTION	COUNTY	TOTAL SHEETS	SHEET NO.
		McLEAN	8	6
STA.	TO STA.			
FED. ROAD DIST. NO.	ILLINOIS	FED. AID PROJECT		

BITUMINOUS SURFACE REMOVAL (VARIABLE DEPTH) COLD MILLING, ZERO DEPTH AROUND THE PERIMETER OF THE MILLING AND APPROXIMATELY 1" TO 2" DEPTH ALONG THE CENTER OF THE SWALE. PROVIDE POSITIVE DRAINAGE TO THE NEW INLET LOCATION. CHECK DRAINAGE BY POURING WATER ON THE AREA AFTER MILLING AND REMILL IF NECESSARY TO OBTAIN ADEQUATE DRAINAGE (NO PONDING)



- NOTES:
- CONTRACTOR TO STRINGLINE THE BITUMINOUS SURFACE REMOVAL AND CHECK THE REMOVAL FOR POSITIVE DRAINAGE AFTER THE INITIAL PASS. ADDITIONAL PASSES SHALL BE MADE IF NECESSARY, TO PROVIDE POSITIVE DRAINAGE WITHOUT ANY PONDING.
 - GRADE TO DRAIN TO ADJUSTED INLET FROM EDGE OF BARNYARD DRIVEWAY AS NECESSARY. ANY GRADING SHALL BE INCLUDED IN THE UNIT PRICE BID PER EACH FOR INLET TO BE ADJUSTED WITH NEW TYPE 8 GRATE.
 - SEED AND MULCH ANY DISTURBED AREA AROUND THE INLET TO BE ADJUSTED WITHIN TWO WORKING DAYS OF THE ADJUSTMENT.



LEGEND
 E832.11 EXISTING ELEVATION
 P829.40 PROPOSED ELEVATION

REVISIONS	
NAME	DATE
DRR	10/26/05

ILLINOIS DEPARTMENT OF TRANSPORTATION
DRAINAGE PLAN & MISCELLANEOUS DETAILS
 IDOT / IHPA
 DAVID DAVIS MANSION
 STATE HISTORIC SITE
 SCALE: VERT. _____
 DATE _____
 DRAWN BY _____
 CHECKED BY _____

DESIGNED BY PJM	 2709 McGraw Drive Bloomington, Illinois 61704 309/883-8436, 309/883-1571 fax	FILE NO. 24-7567
DRAWN BY DRR		DATE 10/26/05
CHECKED BY PJM		SHEET NO. 6 OF 8

PLOT DATE = 10/26/05
 FILE NAME = F:\FILES\...
 PLOT SCALE = 1/8"=1'-0"
 USER NAME = RUSBYN