

F.A.P. RTE.	SECTION	COUNTY	TOTAL SHEETS	SHEET NO.
326	107-RS-4	KANE	35	1
		ILLINOIS	CONTRACT NO. 60P09	

STATE OF ILLINOIS
DEPARTMENT OF TRANSPORTATION
DIVISION OF HIGHWAYS

**PROPOSED
HIGHWAY PLANS**

FAP ROUTE 326 : ILL 47
SEAVEY ROAD TO 0.1 MILES NO WELTER ROAD
SECTION: 107-RS-4

**RESURFACING (3P)/MILLED RUMBLE STRIPES
KANE COUNTY**

C-91-463-11

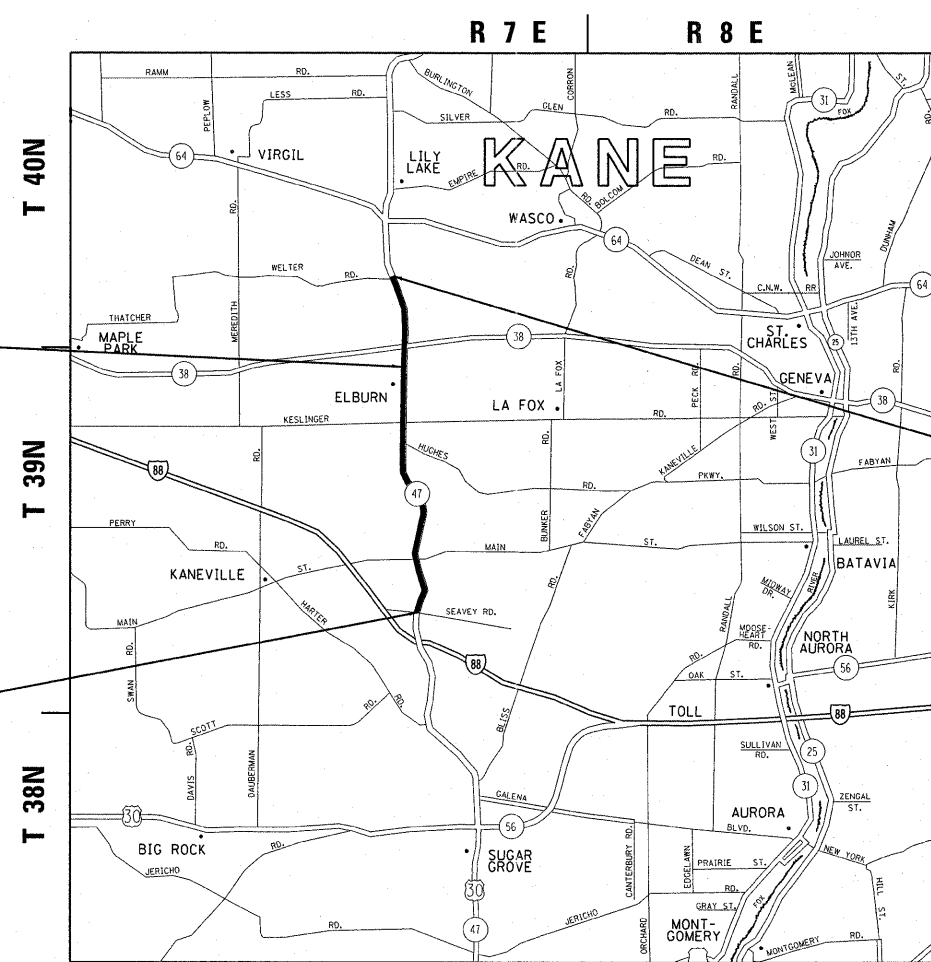
FOR INDEX OF SHEETS, SEE SHEET NO. 2

THE PROJECT IS LOCATED IN THE
VILLAGE OF ELBURN &
UNINCORPORATED KANE COUNTY

D-91-463-11



LOCATION OF SECTION INDICATED THUS: - ■ -

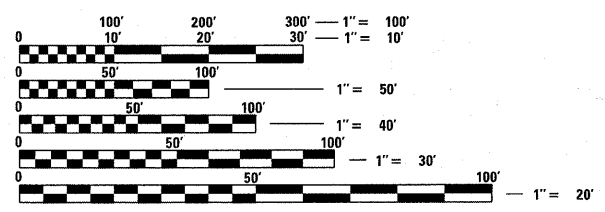


TRAFFIC DATA
2009 ADT = 10300
POSTED SPEED LIMIT = 25 - 55 MPH

OMISSION
STA. 267+72 TO
STA. 268+16

PROJECT ENDS
STA. 438+10

PROJECT BEGINS
STA. 4+57



FULL SIZE PLANS HAVE BEEN PREPARED USING STANDARD ENGINEERING SCALES. REDUCED SIZED PLANS WILL NOT CONFORM TO STANDARD SCALES. IN MAKING MEASUREMENTS ON REDUCED PLANS, THE ABOVE SCALES MAY BE USED.

J.U.L.I.E.
JOINT UTILITY LOCATION INFORMATION FOR EXCAVATION
1-800-892-0123
OR 811

PROJECT ENGINEER KARI SMITH (847) 705-4437
PROJECT MANAGER KEN ENG (847) 705-4247

CONTRACT NO. 60P09

CAMPTON & BLACKBERRY TOWNSHIPS

GROSS LENGTH = 43,353 FT. = 8.21 MILE
NET LENGTH = 43,309 FT. = 8.20 MILE

STATE OF ILLINOIS
DEPARTMENT OF TRANSPORTATION
DIVISION OF HIGHWAYS

SUBMITTED OCTOBER 21, 2011
Diane M. O'Neil
DEPUTY DIRECTOR OF HIGHWAYS, REGION ENGINEER

December 9, 2011
Scott E. Stitt, P.E.
ACTING ENGINEER OF DESIGN AND ENVIRONMENT

December 9, 2011
William R. Fienler
INTERIM DIRECTOR OF HIGHWAYS, CHIEF ENGINEER

**PRINTED BY THE AUTHORITY
OF THE STATE OF ILLINOIS**