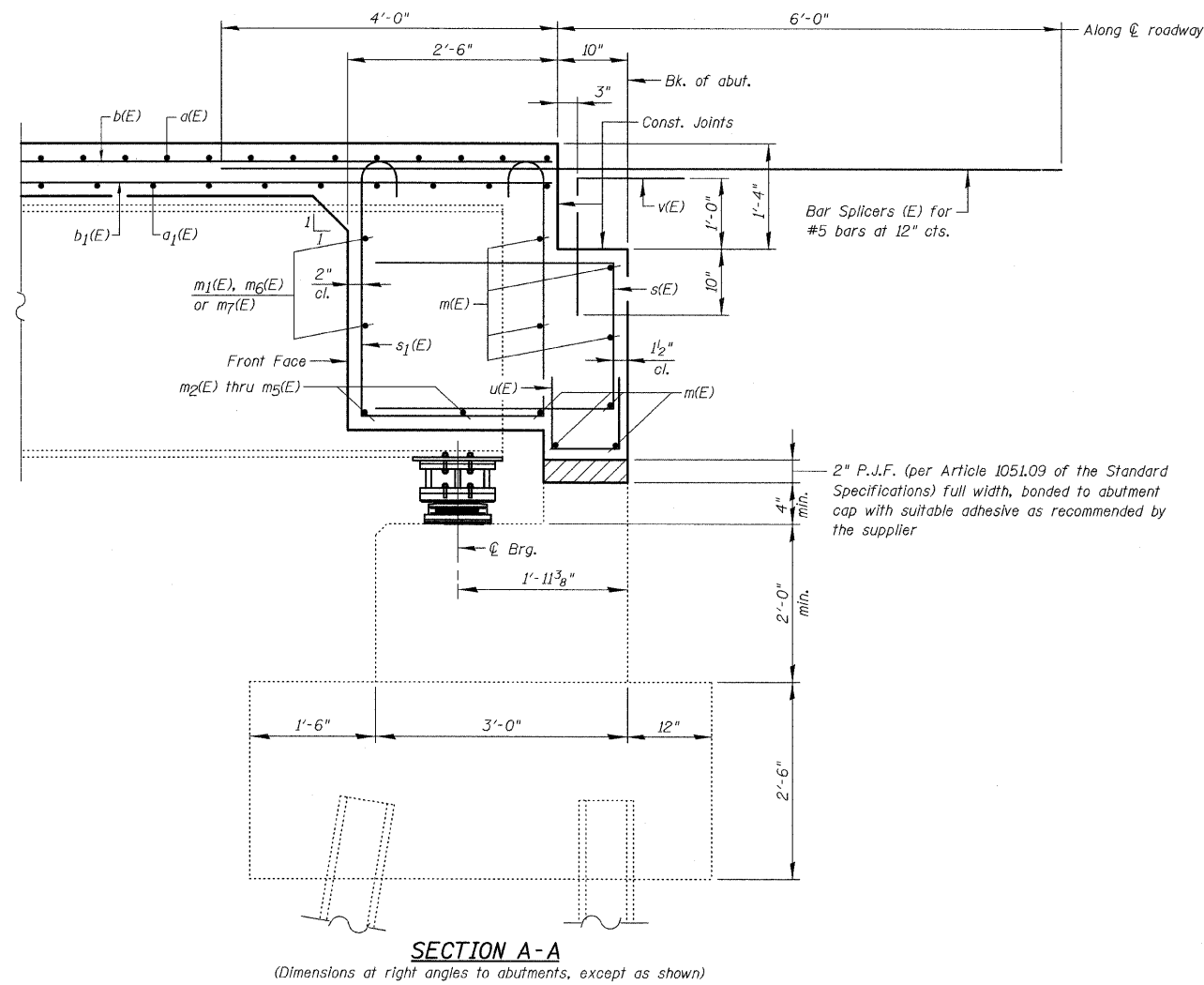
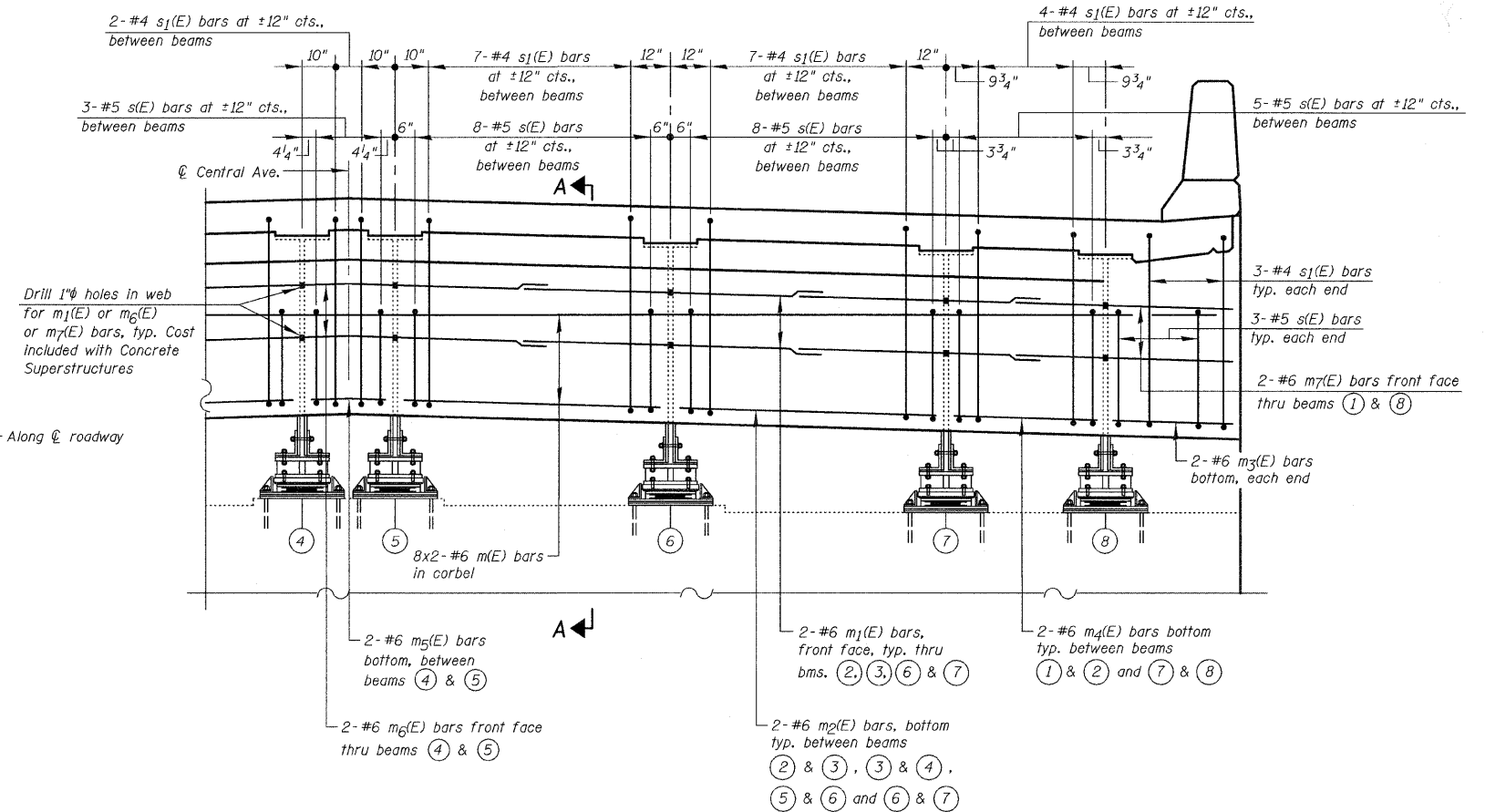


FILE NAME = I:\022909\_Central\_Ave\_Structural\CADD Sheets\0160P17-11-superstr-det-II.dgn



**SECTION A-A**

(Dimensions at right angles to abutments, except as shown)



**DIAPHRAGM ELEVATION AT SEMI-INTEGRAL ABUTMENT**

(North Abutment - shown  
South Abutment - opp. hand)

**Notes:**

Reinforcement bars in diaphragm are billed with superstructure on sheet S10.  
Concrete in diaphragm is included with Concrete Superstructure on sheet S10.  
For details of bars s(E), s1(E), u(E) & v(E) see sheet S10.  
The s(E) and s1(E) bars shall be placed parallel to the beams. Spacing for these bars shall be at right angles to the beams.

**MIN. BAR LAP**

#6 bar = 3'-4"



USER NAME = IDOT	DESIGNED - J.C.N./B.N.S.	REVISED -
PLOT SCALE = 50.000000 ' / IN.	CHECKED - B.N.S.	REVISED -
PLOT DATE = 12/10/2011	DRAWN - F.M.	REVISED -
	DATE - DECEMBER 9, 2011	REVISED -

STATE OF ILLINOIS  
DEPARTMENT OF TRANSPORTATION

SUPERSTRUCTURE DETAILS-II  
STRUCTURE NO. 016-2458

SHEET NO. S11 OF S24 SHEETS

F.A.I. RTE. 80	SECTION 1415-803HB-R	COUNTY COOK	TOTAL SHEETS 51	SHEET NO. 26
				CONTRACT NO. 60P17
ILLINOIS FED. AID PROJECT				