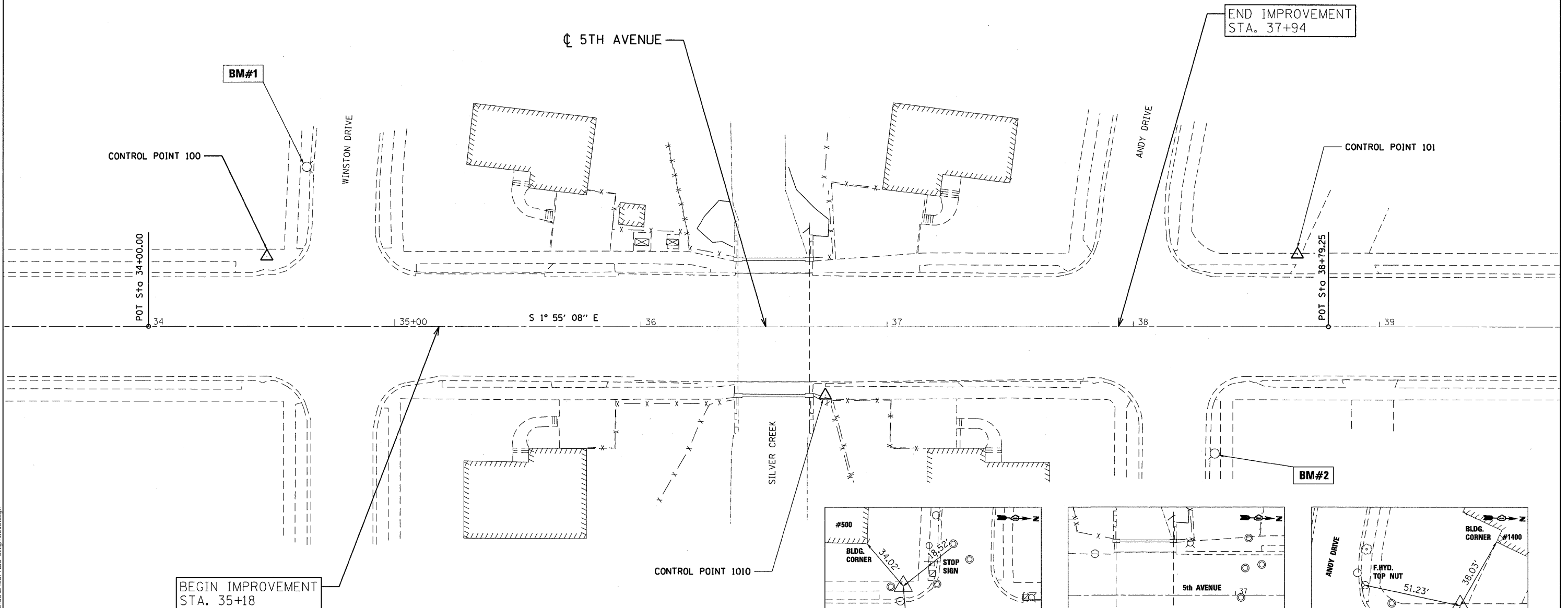
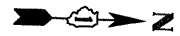


PROJECT COORDINATES

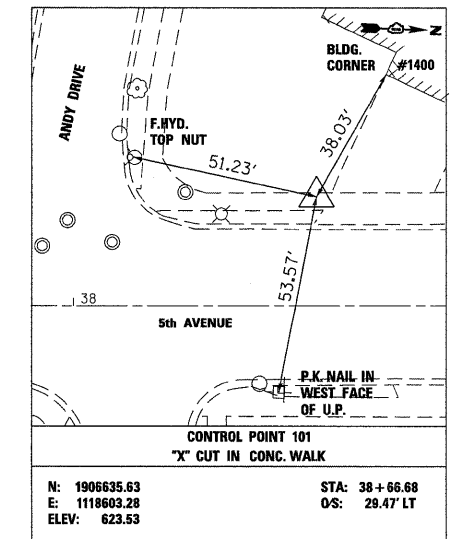
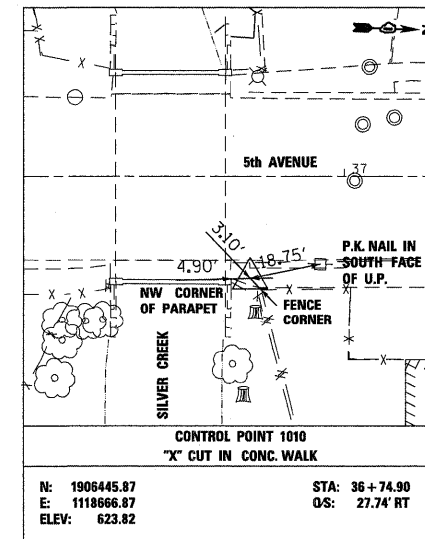
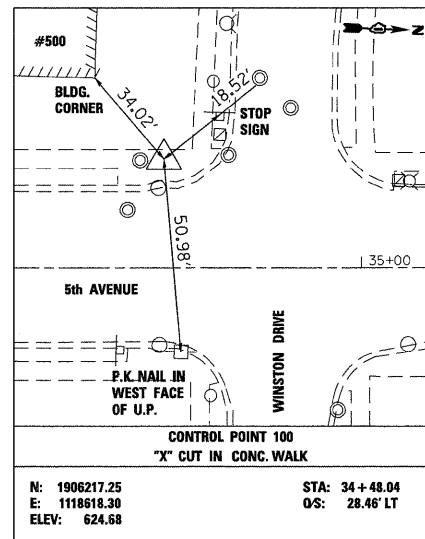
NUMBER	LOCATION	DESCRIPTION	STATION	NORTHING	EASTING
1	5TH - CL	P.O.T. STATION	34+00.00	1,906,170.20	1,118,648.36
2	5TH - CL	P.O.T. STATION	38+79.25	1,906,649.18	1,118,632.31



BEGIN IMPROVEMENT
STA. 35+18

END IMPROVEMENT
STA. 37+94

BM#	DESCRIPTION	ELEVATION
BM#1	SE B-BOLT OF FIRE HYDRANT @ SW CORNER OF 5TH AVENUE & WINSTON DRIVE	625.56
BM#2	NW B-BOLT OF FIRE HYDRANT @ NE CORNER OF 5TH AVENUE & ANDY DRIVE	625.24



ENGINEERING CONSULTANT

Clorba Group, Inc.
 CONSULTING ENGINEERS
 6507 North Cumberland Avenue, Suite 402
 Chicago, Illinois 60656
 Tel: 773.778.4200 Fax: 773.778.4014
 Email: clorba@clorba.com

USER NAME = wjencaster	DESIGNED - WBL	REVISED - WBL
PLOT SCALE = 20.0000' / IN.	DRAWN - WBL	REVISED - WBL
PLOT DATE = 10/26/2011	CHECKED - MJL	REVISED - MJL
	DATE - 10/17/11	REVISED -

**STATE OF ILLINOIS
DEPARTMENT OF TRANSPORTATION**

**FAU 2742 / 5TH AVENUE
OVER SILVER CREEK
ALIGNMENTS, TIES AND BENCHMARKS**

SCALE: SHEET NO. OF SHEETS STA. TO STA.

F.A.U. RTE.	SECTION	COUNTY	TOTAL SHEETS	SHEET NO.
2742	3222-W-BR	COOK	51	11
CONTRACT NO. 62116				
ILLINOIS FED. AID PROJECT				