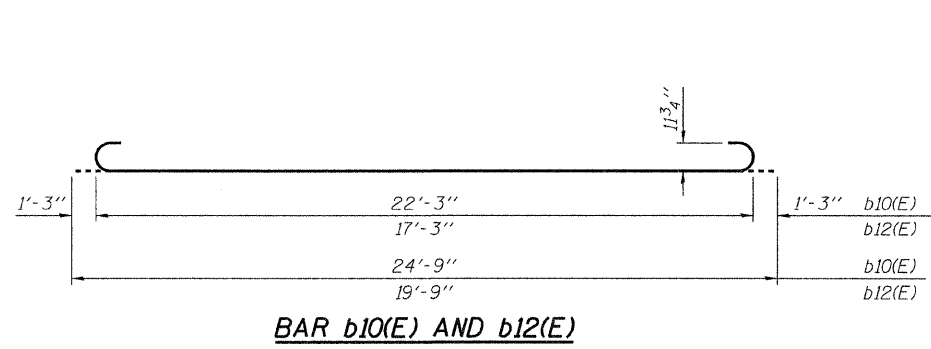
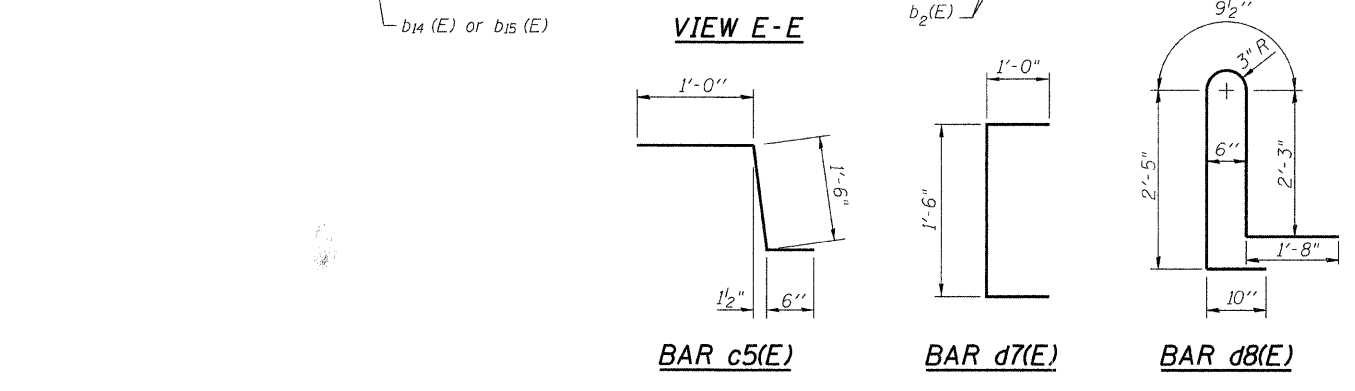
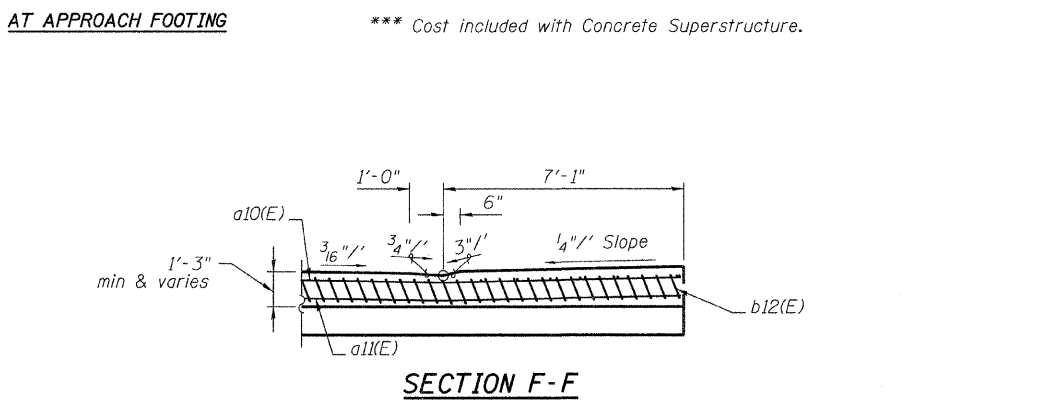
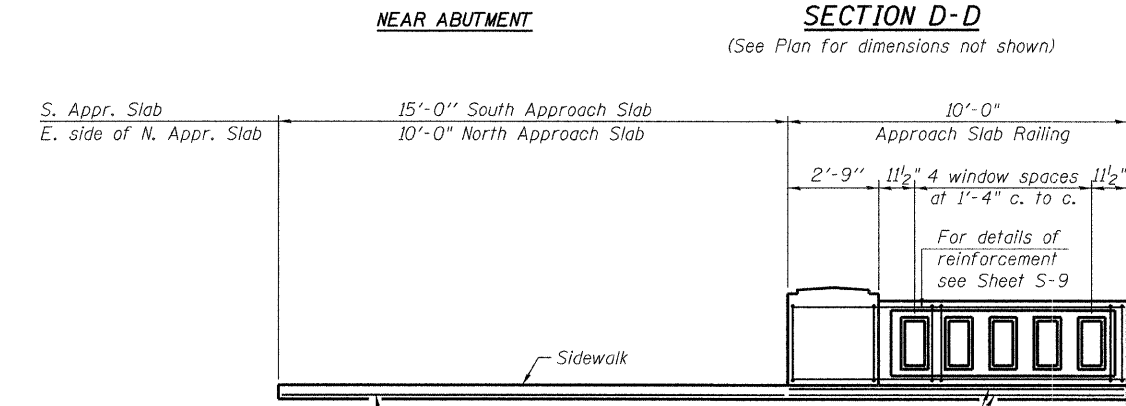
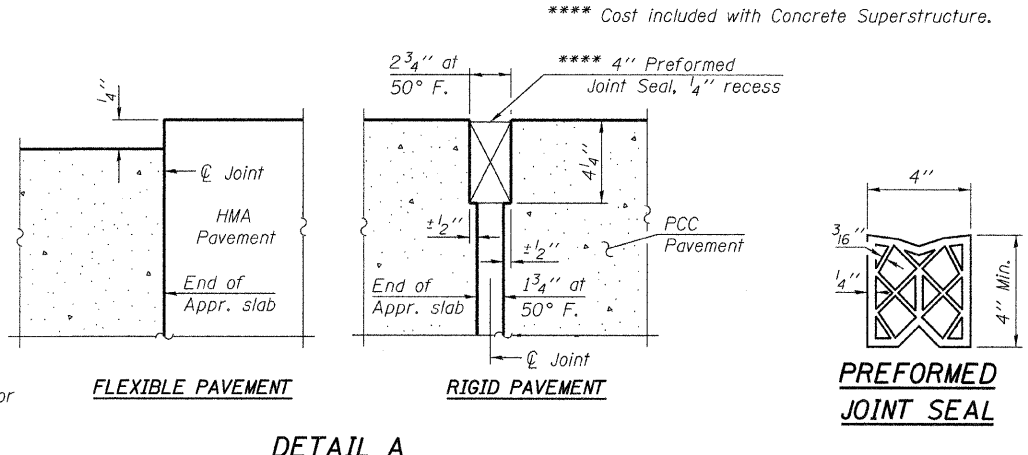
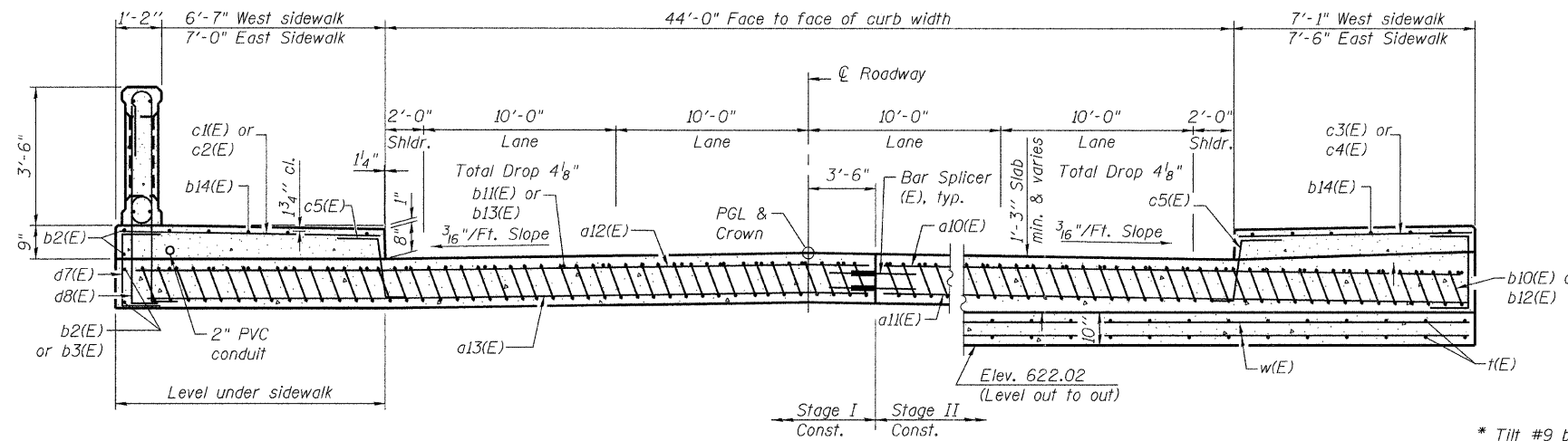


**NOTES:**

Approach slab shall be paid for as Concrete Superstructure.  
 Approach footing concrete shall be paid for as Concrete Structures.  
 Reinforcement shall be paid for as Reinforcement Bars, Epoxy Coated.  
 For x(E) bar details, see sheet S-13.  
 The approach footing maximum applied service bearing pressure (Qmax) = 2.0 ksf.  
 For bar splicer details, see sheet S-15.  
 Cost of excavation for approach footing included with Concrete Structures.  
 For Porous Granular Embankment (Special) and drainage treatment details, see sheet S-2.  
 For additional Concrete Railing details, see S-9. The Concrete Railing shall be paid for as Concrete Bridge Rail Sidewalk Mounted.



**TWO APPROACHES  
BILL OF MATERIAL**

Bar	No.	Size	Length	Shape
a10(E)	38	# 4	25'-3"	—
a11(E)	69	# 5	25'-3"	—
a12(E)	38	# 4	32'-8"	—
a13(E)	69	# 5	32'-8"	—
b2(E)	8	# 4	9'-8"	—
b3(E)	4	# 4	14'-8"	—
b10(E)	141	# 9	24'-9"	⌢
b11(E)	49	# 4	24'-8"	—
b12(E)	141	# 9	19'-9"	⌢
b13(E)	49	# 4	19'-8"	—
b14(E)	17	# 5	24'-8"	—
b15(E)	9	# 5	19'-8"	—
c1(E)	22	# 5	7'-10"	⌢
c2(E)	11	# 5	7'-5"	—
c3(E)	25	# 5	7'-2"	—
c4(E)	15	# 5	6'-9"	—
c5(E)	73	# 5	3'-0"	⌢
d7(E)	73	# 5	3'-6"	⌢
d8(E)	48	# 5	8'-0"	⌢
t(E)	240	# 4	9'-8"	—
w(E)	80	# 5	25'-3"	—
w1(E)	80	# 5	32'-8"	—
Reinforcement Bars, Epoxy Coated		Pound	36,680	
Concrete Superstructure		Cu. Yd.	144.7	
Bar Splicers		Each	187	
Concrete Structures		Cu. Yd.	36.2	
Bridge Deck Grooving		Sq. Yd.	2.10	
Protective Coat		Sq. Yd.	3.18	

N:\PROJECTS\00023377\_000\0003377\_000\Design\Structural\CAD\016-2818\_12 Bridge Approach Slab Details 2of2.dgn  
 Ciorba Group, Inc.  
 CONSULTING ENGINEERS  
 200 North Chestnut Avenue  
 Suite 202  
 Chicago, Illinois 60606  
 Tel: 773.776.4229  
 Fax: 773.776.4214  
 Email: Chicago@ciorba.com

USER NAME = bsauter	DESIGNED BWS	REVISED -
PLOT SCALE = 0:1.000000 '1' / 1/8"	CHECKED LVH	REVISED -
PLOT DATE = 12/5/2011	DRAWN RD	REVISED -
	CHECKED AMK	REVISED -

STATE OF ILLINOIS  
DEPARTMENT OF TRANSPORTATION

BRIDGE APPROACH SLAB DETAILS 2  
STRUCTURE NO. 016-2818  
SHEET NO. S-12 OF S-17 SHEETS

F.A.U. RTE.	SECTION	COUNTY	TOTAL SHEETS	SHEET NO.
2742	3222-W-BR	COOK	51	37
CONTRACT NO.			62116	
ILLINOIS FED. AID PROJECT				