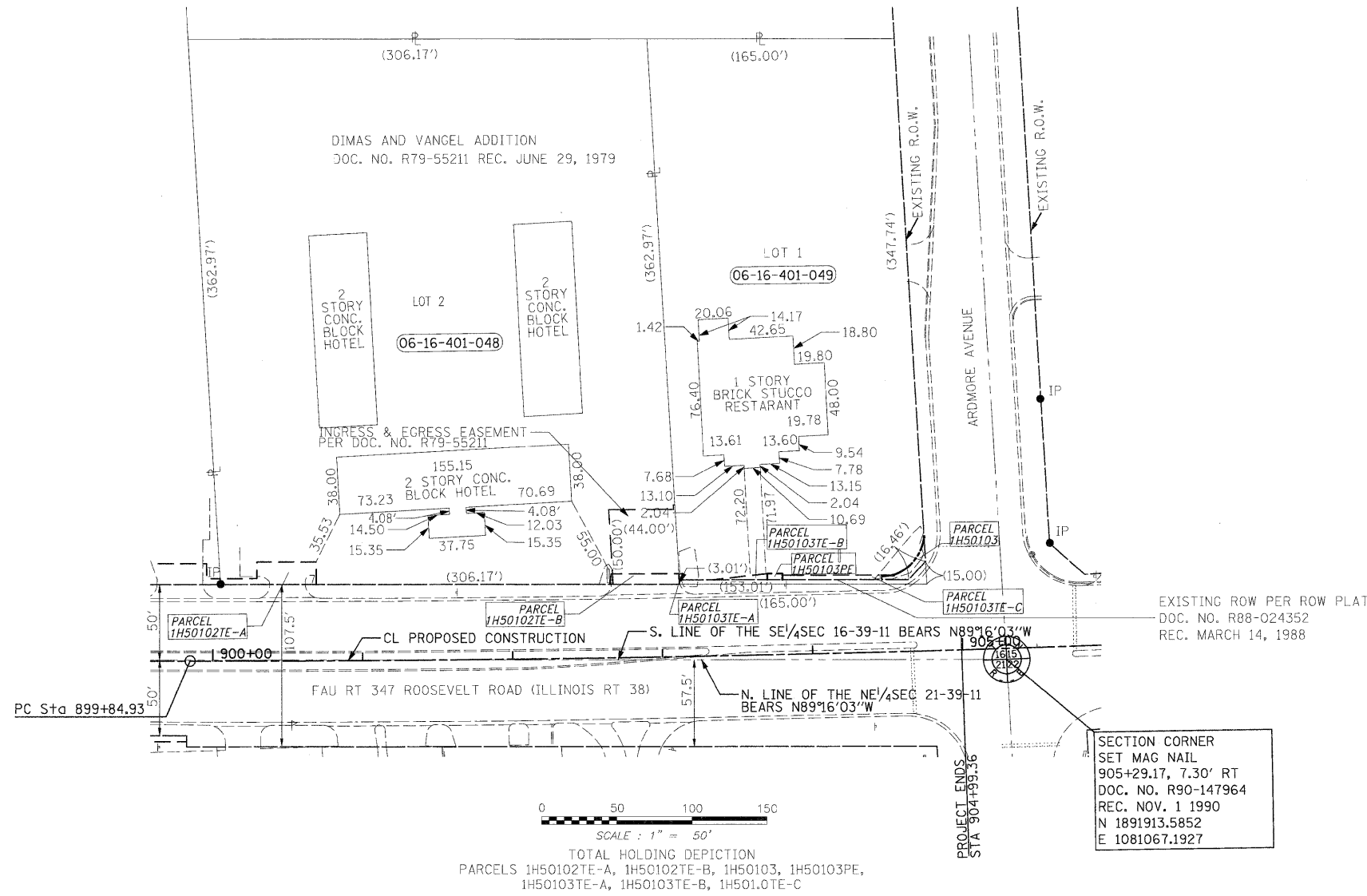




PARCEL NUMBER	OWNER	TOTAL HOLDING	PART TAKEN	REMAINDER	PREV. DED.	EASEMENT	EASEMENT PURPOSE	PERMANENT TAX INDEX NUMBER	PROPERTY ACQUIRED BY
		ACRES	ACRES	ACRES	ACRES	ACRES	ACRES		
1H50102TE-A	M-SIX LIMITED PARTNERSHIP, A DELAWARE LIMITED PARTNERSHIP, AS TO AN ESTATE FOR YEARS, AND ACREM LIMITE'S PARTNERSHIP, A DELAWARE LIMITED PARTNERSHIP, AS TO A REMAINDER INTEREST	2.547 ACRES				0.016 ACRES	CONSTRUCTION	06-16-401-048	
1H50102TE-B						319 SQ. FT. 0.007 ACRES	CONSTRUCTION		
1H50103	WESTERN SPRINGS NATIONAL BANK AND TRUST AS TRUSTEE UNDER TRUST AGREEMENT DATED SEPTEMBER, 4, 1991 KNOWN AS TRUST NO. 3341	1.359 ACRES	188 SQ. FT. 0.004 ACRES	1.355 ACRES				06-16-401-049	
1H50103TE-A					9 SQ. FT.	CONSTRUCTION			
1H50103TE-B					72 SQ. FT. 0.002 ACRES	CONSTRUCTION			
1H50103TE-C					202 SQ. FT. 0.005 ACRES	CONSTRUCTION			
1H50103PE					40 SQ. FT. 0.001 ACRES	CONST/MAINT			



FILE NAME =
D163197-shr-rowplan04.dgn

USER NAME	IDOT	DESIGNED	DA/SC	REVISED	10/24/2011
		DRAWN	BM/CC/BB	REVISED	
		CHECKED	DA	REVISED	
		DATE	06/08/2011	REVISED	

**STATE OF ILLINOIS
DEPARTMENT OF TRANSPORTATION**

**RIGHT OF WAY PLAN
STA 900+00 TO STA 905+00**

SCALE: AS SHOWN SHEET NO. 4 OF 8 SHEETS STA. TO STA.

F.A.P. RTE.	SECTION	COUNTY	TOTAL SHEETS	SHEET NO.
347	02-00077-00-SW	DUPAGE	73	31
FED. ROAD DIST. NO.			ILLINOIS FED. AID PROJECT	