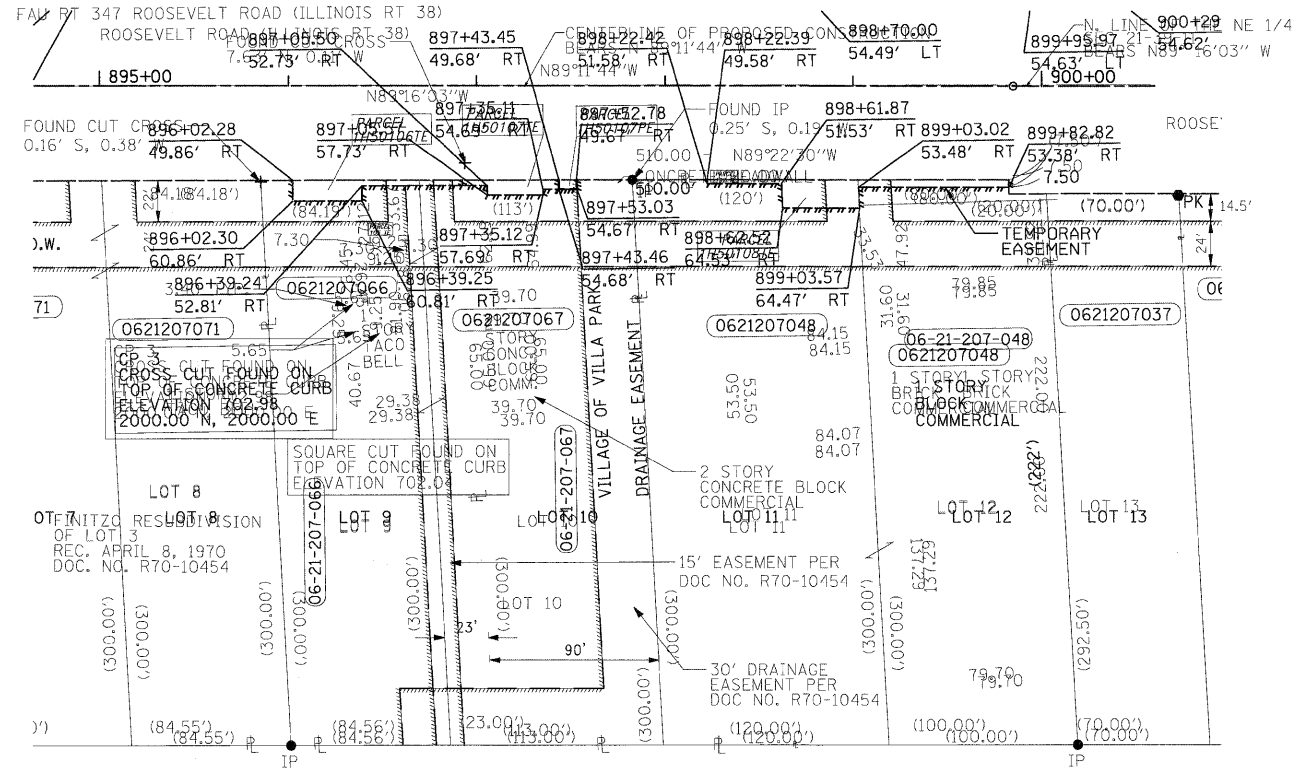


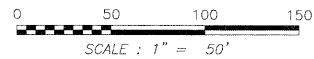


PARCEL NUMBER	OWNER	TOTAL HOLDING ACRES	PART TAKEN ACRES	REMAINDER ACRES	PREV. DED. ACRES	EASEMENT ACRES	EASEMENT PURPOSE	PERMANENT TAX INDEX NUMBER	PROPERTY ACQUIRED BY
1H50106TE	TACO BELL, A CALIFORNIA CORPORATION	0.739 ACRES				0.013 ACRES	CONSTRUCTION	06-21-207-066	
1H50107TE	COSTI KHOURY	0.619 ACRES				317 SQ. FT. 0.007 ACRES	CONSTRUCTION	06-21-207-067	
1H50107PE						47 SQ. FT. 0.001 ACRES	CONSTRUCTION		
1H50108TE	ITASCA BANK & TRUST CO., AS TRUSTEE UNDER TRUST AGREEMENT DATED APRIL 1, 1999 KNOWN AS TRUST NO. 11682	1.509 ACRES				0.023 ACRES	CONSTRUCTION	06-21-207-048	

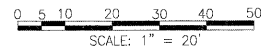
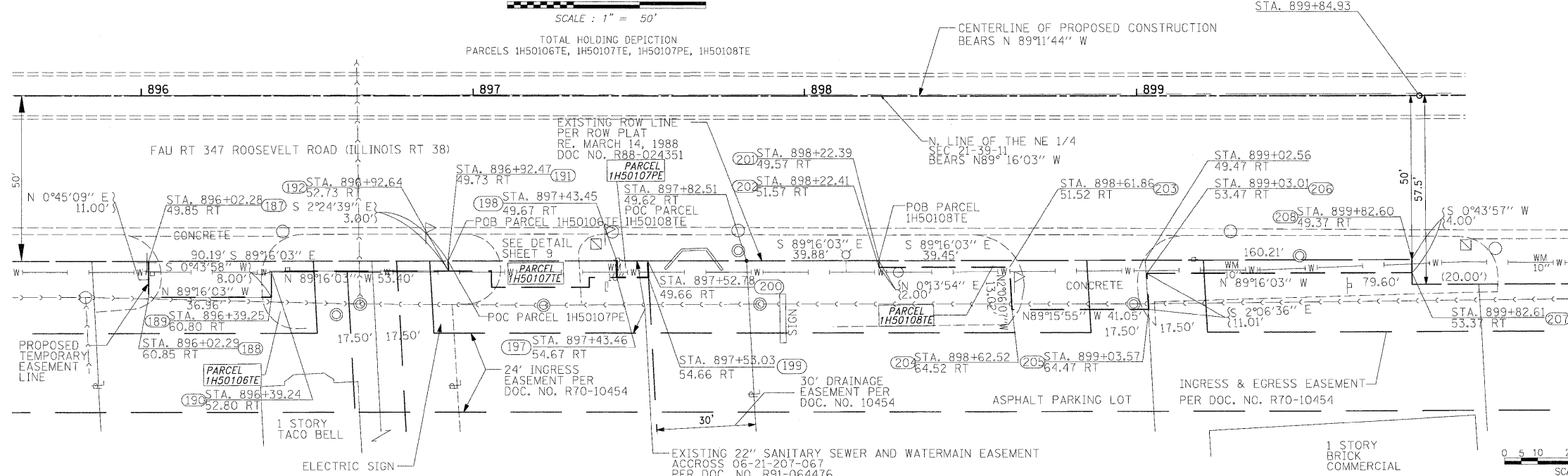


PROJECT COORDINATES ARE SURFACE COORDINATES, AND CAN BE CONVERTED TO STATE PLANE COORDINATES, EAST ZONE, NAD 83 BY MULTIPLYING THE COORDINATES BY 0.99997097.

POINT TABLE		
NUMBER	NORTHING	EASTING
187	1891875.4383	1080139.5417
188	1891864.4392	1080139.3972
189	1891863.9703	1080176.3543
190	1891871.9680	1080176.4566
191	1891874.2872	1080229.7274
192	1891871.2854	1080229.8538
197	1891868.6360	1080280.6401
198	1891873.6356	1080280.7003
199	1891868.5136	1080290.2092
200	1891873.5152	1080290.0295
201	1891872.6265	1080359.6339
202	1891870.6264	1080359.6258
203	1891870.1222	1080399.0727
204	1891857.1159	1080399.5501
205	1891856.5895	1080440.5967
206	1891867.5963	1080440.1912
207	1891866.5789	1080519.7798
208	1891870.5786	1080519.8309



TOTAL HOLDING DEPICTION
PARCELS 1H50106TE, 1H50107TE, 1H50107PE, 1H50108TE



FILE NAME =
D163197-shr-rowplan07.dgn

USER NAME	IDOT	DESIGNED	DA/SC	REVISED	10/24/2011
		DRAWN	BM/CC/BB	REVISED	
		CHECKED	DA	REVISED	
		DATE	06/08/2011	REVISED	

STATE OF ILLINOIS
DEPARTMENT OF TRANSPORTATION

RIGHT OF WAY PLAN
STA 894+60 TO 899+20

SCALE: AS SHOWN SHEET NO. 7 OF 8 SHEETS STA. TO STA.

F.A.P. RTE.	SECTION	COUNTY	TOTAL SHEETS	SHEET NO.
347	02-00077-00-SW	DUPAGE	73	34
CONTRACT NO. 63197				
FED. ROAD DIST. NO. ILLINOIS FED. AID PROJECT				