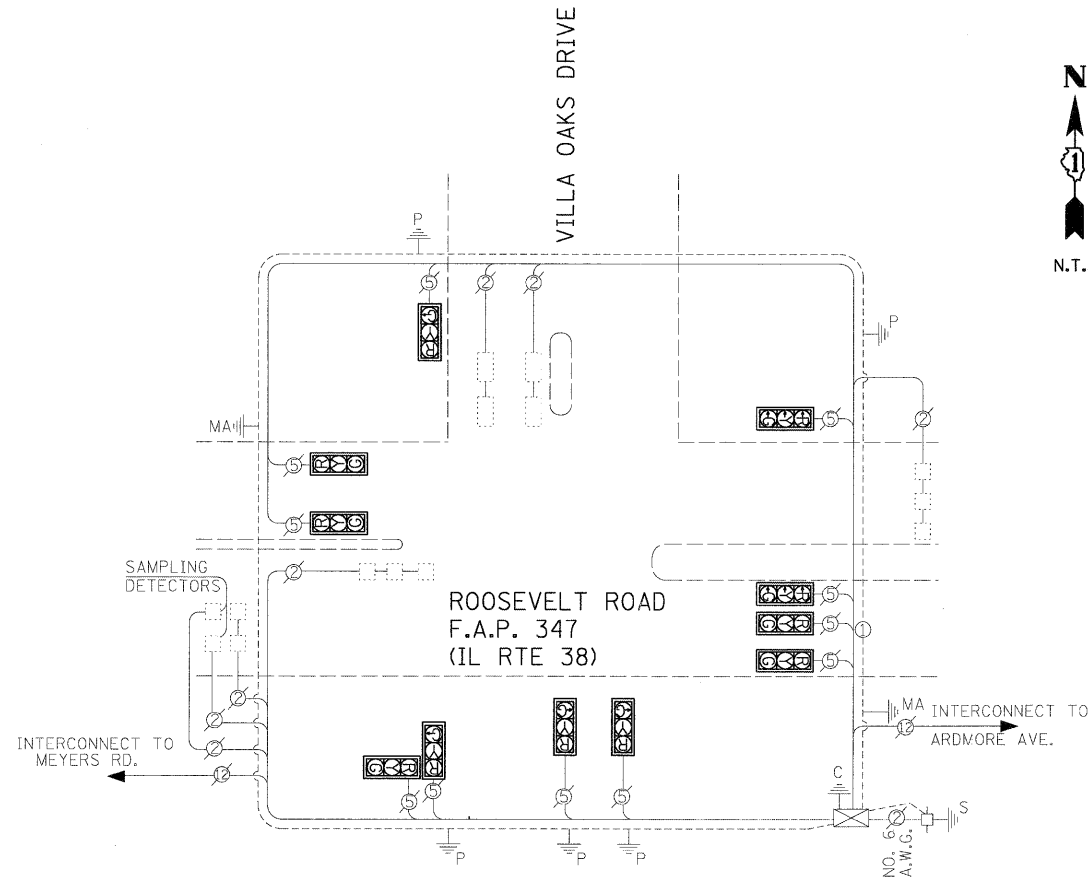


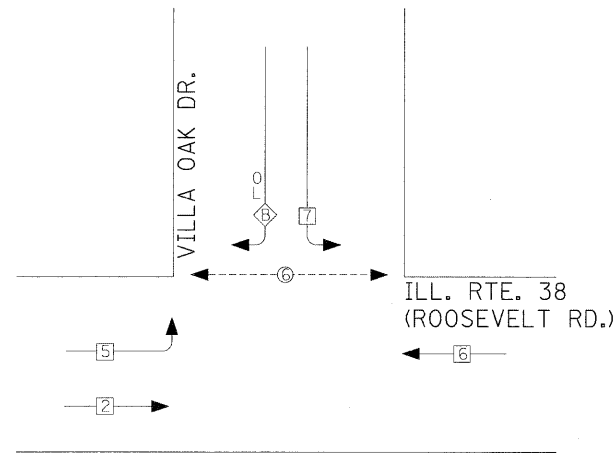


CABLE PLAN LEGEND

EXISTING	PROPOSED	
		8" (200mm) TRAFFIC SIGNAL SECTION
		12" (300mm) TRAFFIC SIGNAL SECTION
		12" (300mm) PEDESTRIAN SIGNAL SECTION WITH COUNTDOWN TIMER
		CONTROLLER CABINET
		SERVICE INSTALLATION
		TELEPHONE INSTALLATION
		VEHICLE DETECTOR, INDUCTION LOOP
		MAGNETIC DETECTOR
		EMERGENCY VEHICLE LIGHT DETECTOR
		CONFIRMATION BEACON
		PUSHBUTTON DETECTOR
		DENOTES NUMBER OF CONDUCTORS. ALL CABLE NO. 14 EXCEPT AS INDICATED. ALL LOOP DETECTOR CABLE TO BE SHIELDED.
		GROUND CABLE IN CONDUIT
		NO. 6 SOLID COPPER (GREEN)
		INTERCONNECT CABLE - NO. 62.5/125 12F FIBER OPTIC CABLE
		SIGNAL FACE WITH BACKPLATE
		"P" INDICATES PROGRAMMED HEAD.
		"E" RAILROAD CONTROL CABINET
		ILLUMINATED SIGN - "NO LEFT TURN"
		ILLUMINATED SIGN - "NO RIGHT TURN"
		GROUND ROD AT HANDHOLE (H), DOUBLE HANDHOLE (HH), OR CONTROLLER (C)
		GROUND ROD AT POST (P), OR MAST ARM POLE (MA)
		GROUND ROD AT ELECTRICAL SERVICE INSTALLATION



CONTROLLER SEQUENCE



PHASE DESIGNATION

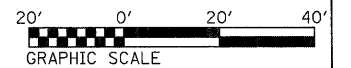
OVERLAP LETTER	=	PERMISSIVE PHASE	+	PROTECTED PHASE
B	=	4	+	5

LEGEND

	DUAL ENTRY PHASE
	SINGLE ENTRY PHASE
	OVERLAP
	PEDESTRIAN PHASE
*	NUMBER REFERS TO ASSOCIATED PHASE

TEMPORARY CABLE DIAGRAM LEGEND

	TEMPORARY TRAFFIC SIGNAL SECTION OR PEDESTRIAN SIGNAL SECTION 12" (300 mm)
	TEMPORARY CONTROLLER CABINET
	TEMPORARY SERVICE INSTALLATION
	DENOTES NUMBER OF CONDUCTORS. ALL CABLE NO. 14 EXCEPT AS INDICATED. ALL LOOP DETECTOR CABLE TO BE SHIELDED.
	VIDEO CABLES (VENDOR SPECIFIED) (POWER AND SIGNAL)
	EMERGENCY VEHICLE LIGHT DETECTOR
	CONFIRMATION BEACON
	VEHICLE DETECTOR, INDUCTION LOOP
	PEDESTRIAN PUSHBUTTON DETECTOR
	12" (300mm) PEDESTRIAN SIGNAL SECTION
	VIDEO VEHICLE DETECTOR



FILE NAME = D163197-ah-t-ta03.dgn	USER NAME IDOT	DESIGNED TM	REVISED 10/24/2011	STATE OF ILLINOIS DEPARTMENT OF TRANSPORTATION	EXISTING CABLE PLAN ROOSEVELT RD. AT VILLA OAKS DR.	F.A.P. RTE. 347	SECTION 02-00077-00-SW	COUNTY DUPAGE	TOTAL SHEETS 73	SHEET NO. 48
PLOT SCALE 20,0000' / IN.	CHECKED DA	DATE 06/08/2011	REVISED			SCALE: AS SHOWN	SHEET NO. 2 OF 6 SHEETS	CONTRACT NO. 63197		FED. ROAD DIST. NO. ILLINOIS FED. AID PROJECT
PLOT DATE 10/25/2011	DATE	06/08/2011	REVISED							