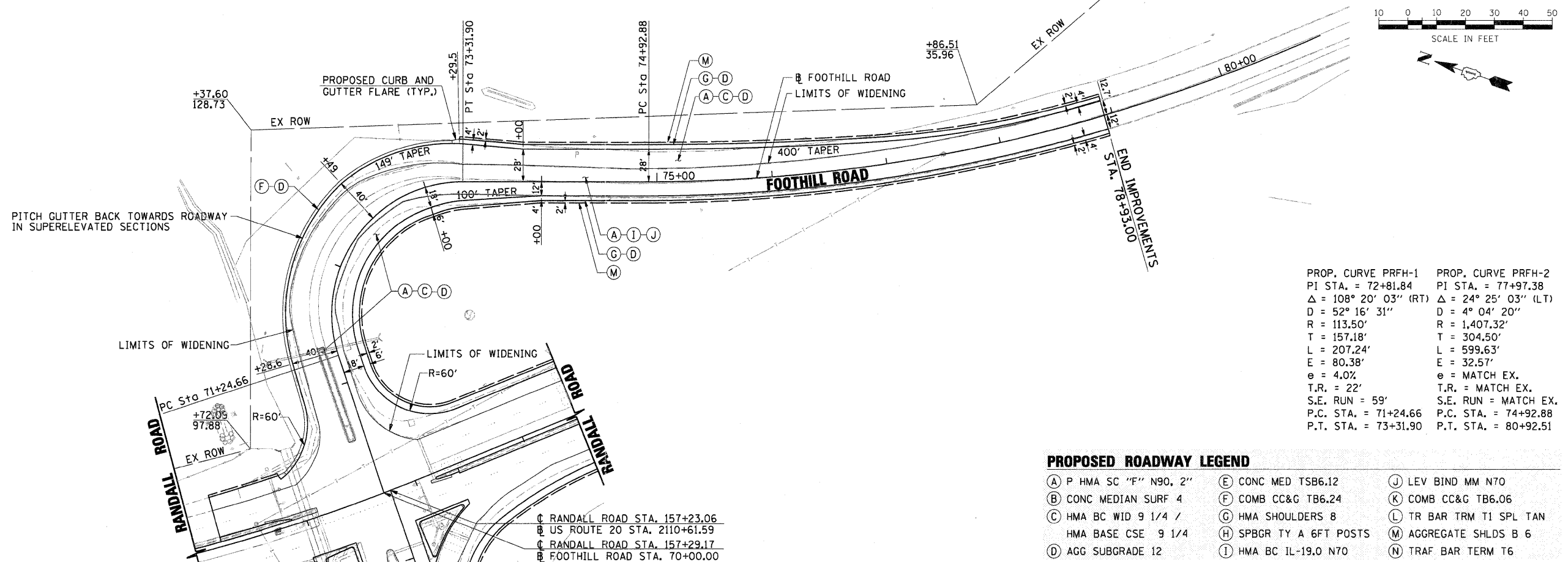


PLAN	REVISED	DATE
NOTE BOOK	ALIGNED	CHECKED
NO.	NO.	NO.

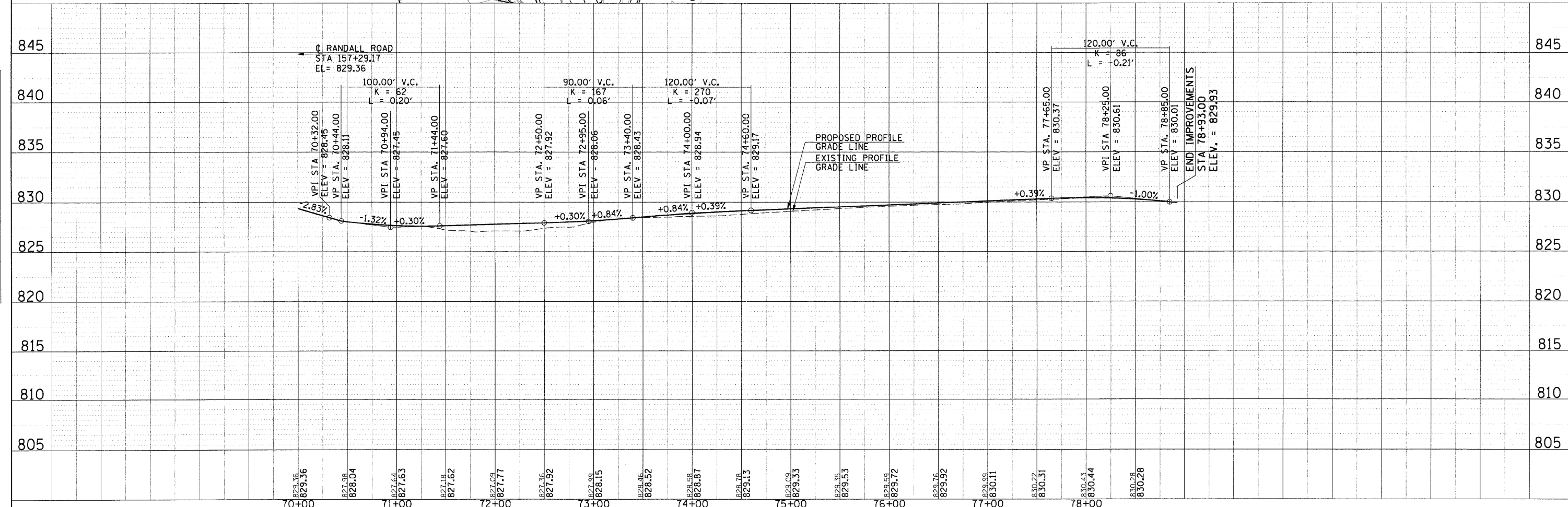
PROFILE	REVISED	DATE
NOTE BOOK	GRADES	CHECKED
NO.	NO.	NO.



PROP. CURVE PRFH-1 PI STA. = 72+81.84 Δ = 108° 20' 03" (RT) R = 113.50' T = 157.18' L = 207.24' E = 80.38' e = 4.0% T.R. = 22' S.E. RUN = 59' P.C. STA. = 71+24.66 P.T. STA. = 73+31.90	PROP. CURVE PRFH-2 PI STA. = 77+97.38 Δ = 24° 25' 03" (LT) R = 1,407.32' T = 304.50' L = 599.63' E = 32.57' e = MATCH EX. T.R. = MATCH EX. S.E. RUN = MATCH EX. P.C. STA. = 74+92.88 P.T. STA. = 80+92.51
--	--

PROPOSED ROADWAY LEGEND

- (A) P HMA SC "F" N90, 2"
- (B) CONC MEDIAN SURF 4
- (C) HMA BC WID 9 1/4 / HMA BASE CSE 9 1/4
- (D) AGG SUBGRADE 12
- (E) CONC MED TSB6.12
- (F) COMB CC&G TB6.24
- (G) HMA SHOULDERS 8
- (H) SPBGR TY A 6FT POSTS
- (I) HMA BC IL-19.0 N70
- (J) LEV BIND MM N70
- (K) COMB CC&G TB6.06
- (L) TR BAR TRM T1 SPL TAN
- (M) AGGREGATE SHLOS B 6
- (N) TRAF BAR TERM T6



FILE NAME = D1157227-SHT-PLAN-04.DGN	USER NAME = mlopez	DESIGNED - ML	REVISED -	STATE OF ILLINOIS	RANDALL ROAD AT US ROUTE 20 (FOOTHILL ROAD)	F.A.P. RTE. 336	SECTION 06-00345-00-CH	COUNTY KANE	TOTAL SHEETS 92	SHEET NO. 20
PLOT SCALE = 1/8"=1'				DEPARTMENT OF TRANSPORTATION		SCALE: 50'-1'		SHEET NO. 4 OF 4 SHEETS		STA. TO STA.
PLOT DATE = 10/24/2011				DATE = 04-04-11		CONTRACT NO. 63623		FED. ROAD DIST. NO. 1 ILLINOIS FED. AID PROJECT		