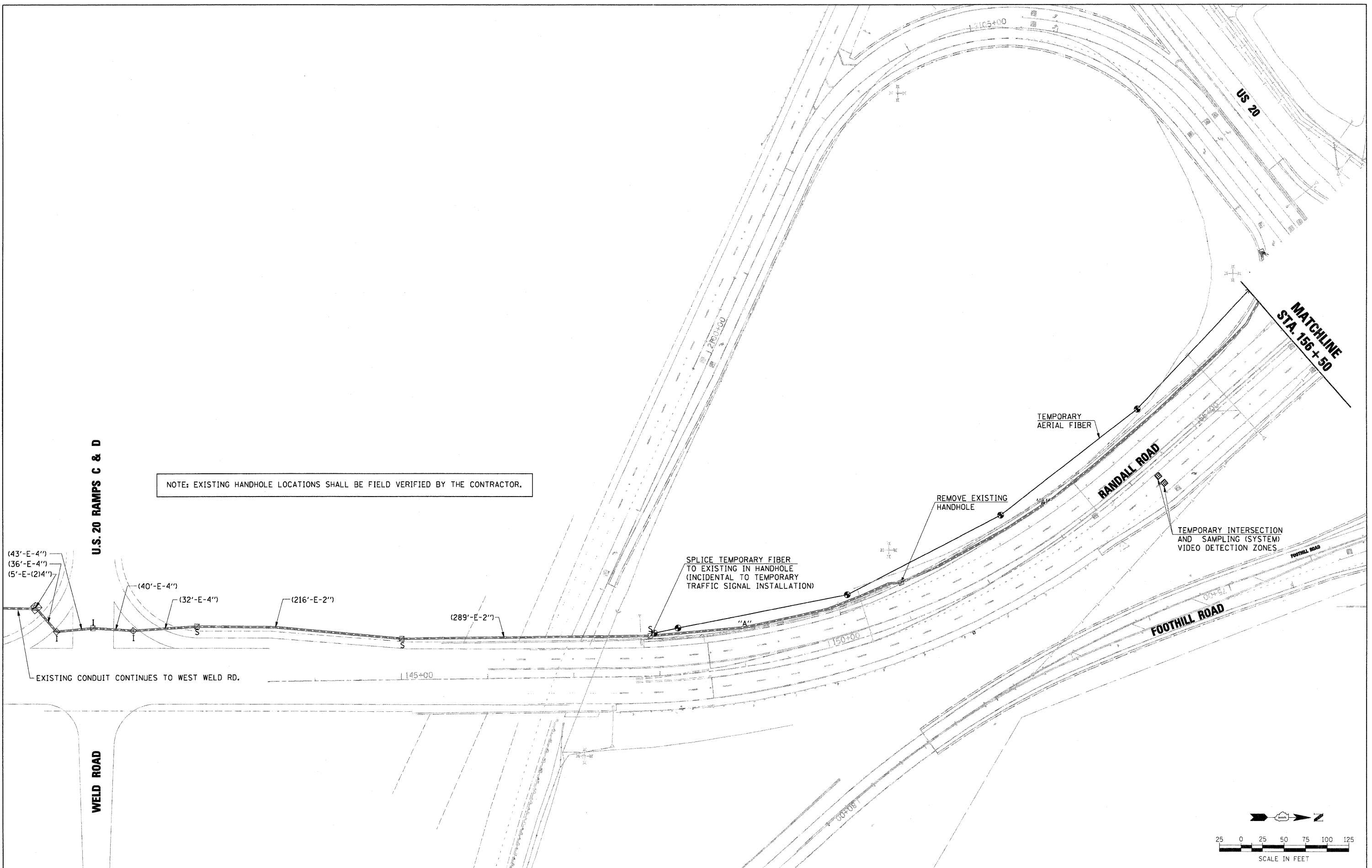


PLAN	NO.	DATE
SURVEYED		
ALIGNED		
CHECKED		
BY		
DATE		

PROFILE	NO.	DATE
SURVEYED		
GRADES CHECKED		
BY		
DATE		



NOTE: EXISTING HANDHOLE LOCATIONS SHALL BE FIELD VERIFIED BY THE CONTRACTOR.

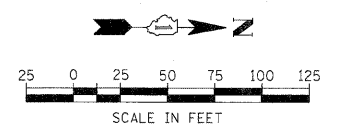
(43'-E-4")
 (36'-E-4")
 (5'-E-(2)4")
 (40'-E-4")
 (32'-E-4")
 (216'-E-2")
 (289'-E-2")
 EXISTING CONDUIT CONTINUES TO WEST WELD RD.

SPLICE TEMPORARY FIBER TO EXISTING IN HANDHOLE (INCIDENTAL TO TEMPORARY TRAFFIC SIGNAL INSTALLATION)

REMOVE EXISTING HANDHOLE

TEMPORARY AERIAL FIBER

TEMPORARY INTERSECTION AND SAMPLING (SYSTEM) VIDEO DETECTION ZONES



FILE NAME = D:\157207-SHT-TS09-INT01.DGN

USER NAME = molopez
 PLOT SCALE = *SCALE*
 PLOT DATE = 11/29/2011

DESIGNED - BH
 DRAWN - BH
 CHECKED - DWW
 DATE - 05-09-2011

REVISED -
 REVISED -
 REVISED -
 REVISED -

**STATE OF ILLINOIS
 DEPARTMENT OF TRANSPORTATION**

**TEMPORARY TRAFFIC SIGNAL INTERCONNECT PLAN
 RANDALL ROAD FROM WELD ROAD TO HIGHLAND AVENUE**

SCALE: SHEET NO. OF SHEETS STA. TO STA.

F.A.P. RTE.	SECTION	COUNTY	TOTAL SHEETS	SHEET NO.
336	06-00345-00-CH	KANE	92	35A
CONTRACT NO. 63623				

FED. ROAD DIST. NO. 1 [ILLINOIS] FED. AID PROJECT