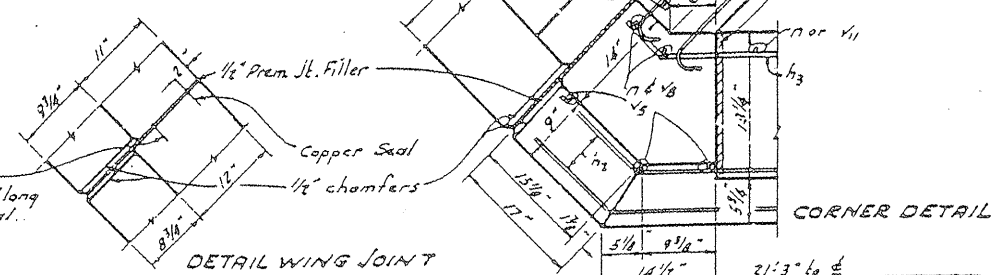
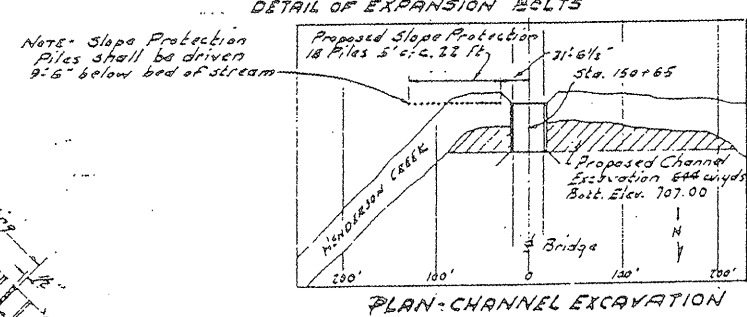
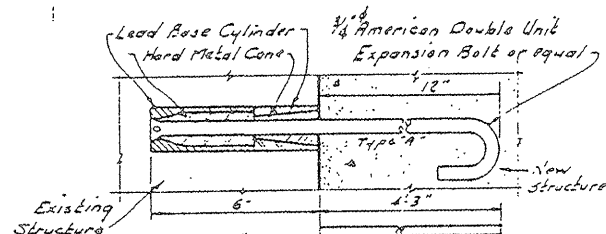
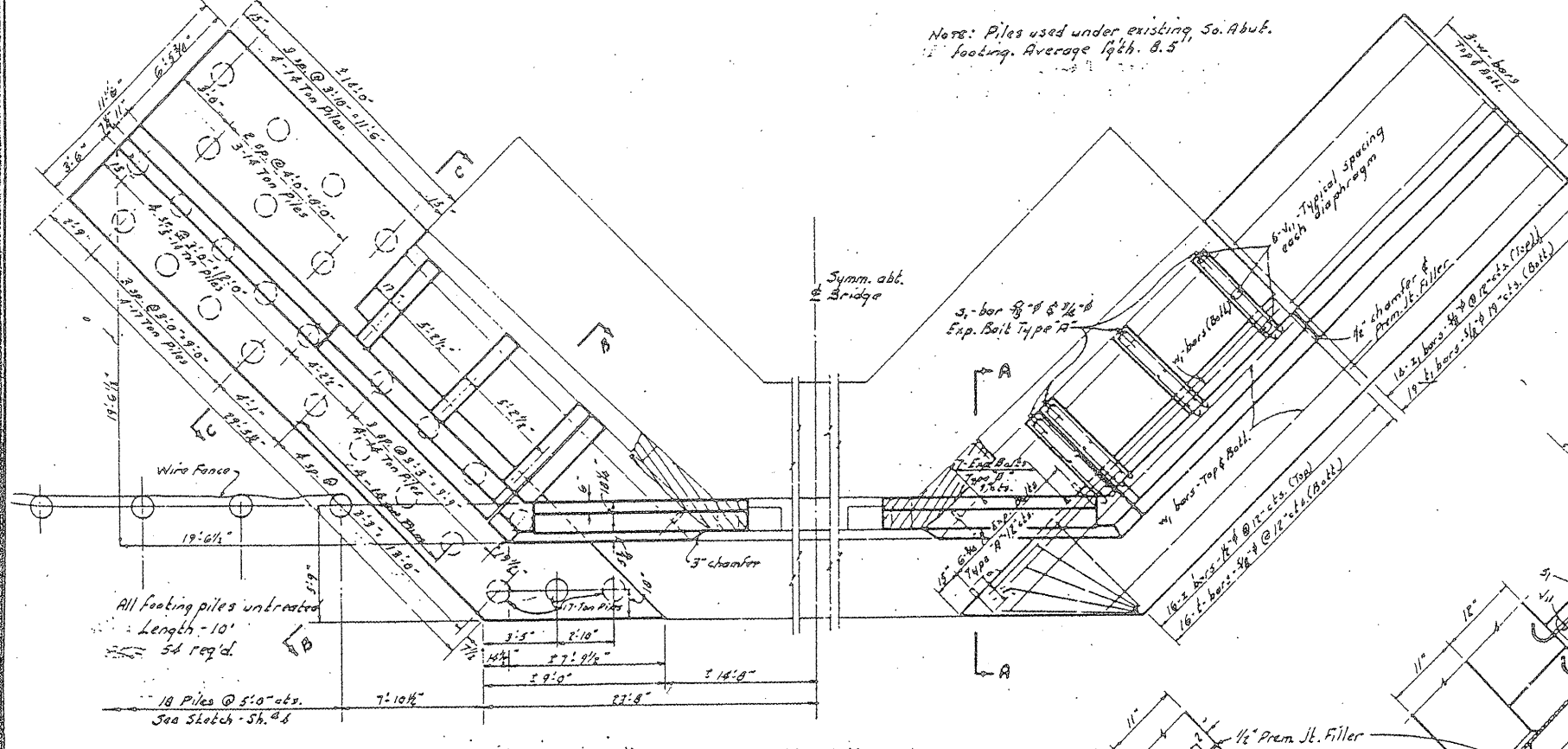
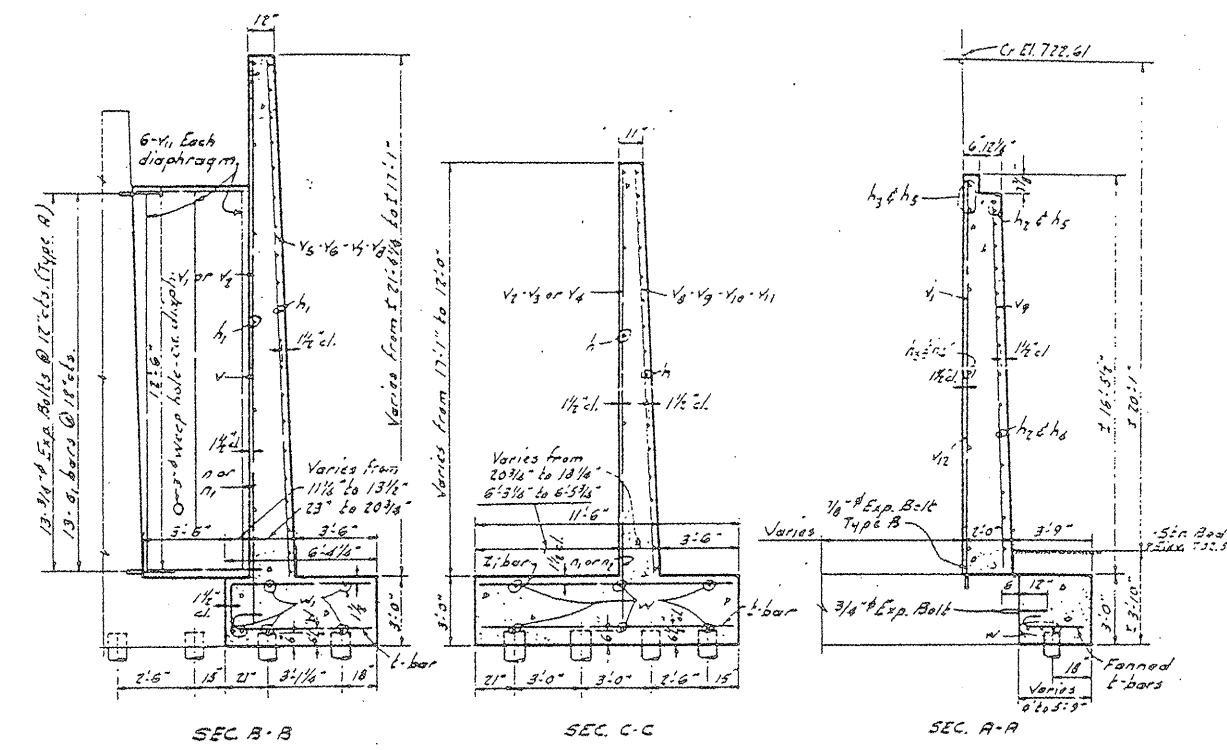
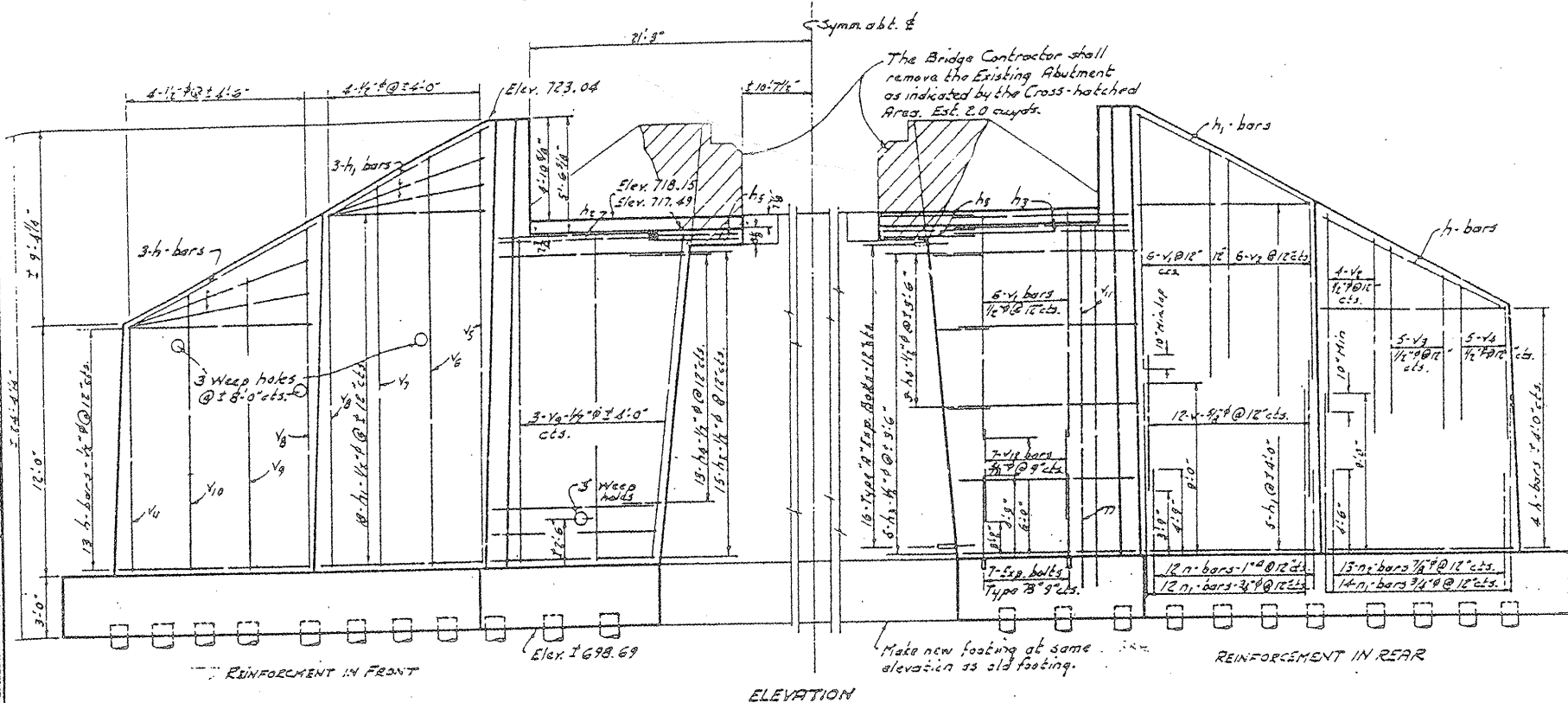


STATE OF ILLINOIS
DEPARTMENT OF PUBLIC WORKS & BUILDINGS
DIVISION OF HIGHWAYS

ROAD DISTRICT NO.	SECTION	COUNTY	TOTAL SHEETS	SHEET NO.
80	125B-Y	KNOX	25	23
FILE ROAD DIST. NO. 7	ILLINOIS	FILE NO. PROJECT	FT-155 (13)	

SHEET NO. 23
4 SHEETS



BILL OF MATERIAL - SO. ABUT.

Bar No.	Size	Length	Shape
1	24	13.9	
2	36	11.6	
3	36	9.9	
4	16	6.9	
5	32	11.0	
6	10	6.0	
7	32	6.9	
8	52	11.0	
9	104	14.3	
10	40	7.0	
11	38	11.3	
12	24	7.0	
13	24	10.6	
14	20	8.6	
15	10	7.0	
16	10	6.6	
17	8	7.0	
18	2	19.9	
19	2	10.3	
20	8	16.9	
21	8	14.9	
22	2	13.6	
23	54	11.9	
24	16	6.0	
25	12	13.9	
26	12	19.6	
27	32	8.6	
28	28	11.3	
29	26	6.6	

Class X Concrete	Cu. Yds. 140.8
Reinforcing Bars	Lbs. 7,514
Concrete Removal	Cu. Yds. 2.0
Untreated Piles (Est. by 10')	Lin. Ft. 540
Expansion Bolt - Type 'A'	Eq. 123
Expansion Bolt - Type 'B'	Eq. 14
Treated Piles - (Est. by 22')	Lin. Ft. 396
Attaching Wire Fence	Sq. Yds. 69

PROJECT FT-155(13)
S.B. RT. 80 P.A. RT. 53
SECTION 125-B-Y
KNOX CO.
STA. 150+65

DESIGNED: *James J. Hawley*
CHECKED: *James J. Hawley*
DRAWN: *J. J. N.*
CHECKED: *James J. Hawley*

EXAMINED: *W. J. R. ...*
PASSED: *W. J. R. ...*
APPROVED: *W. J. R. ...*