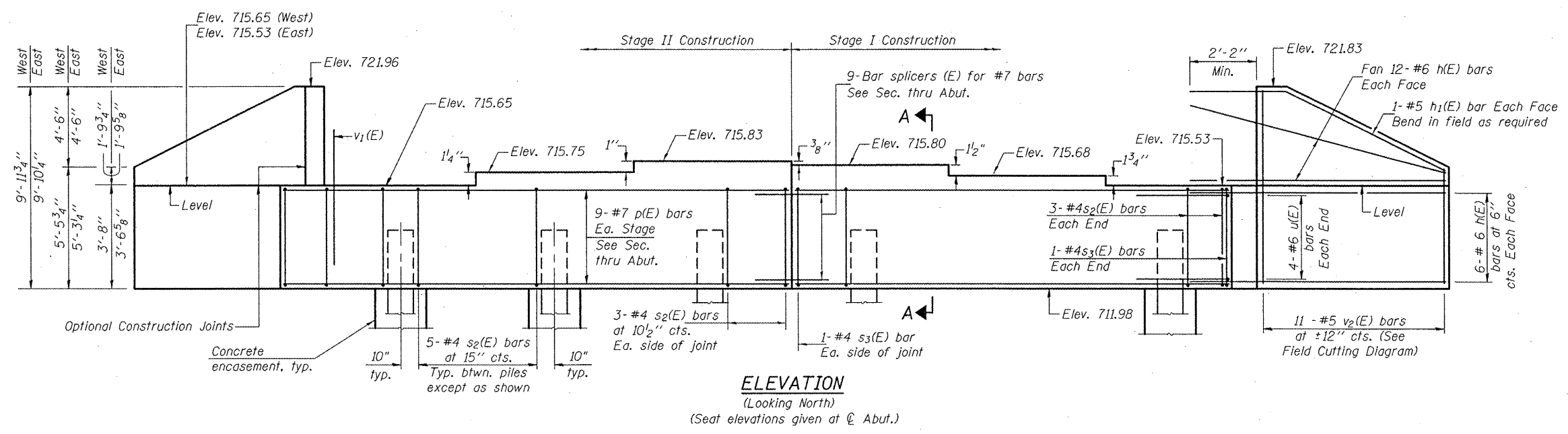


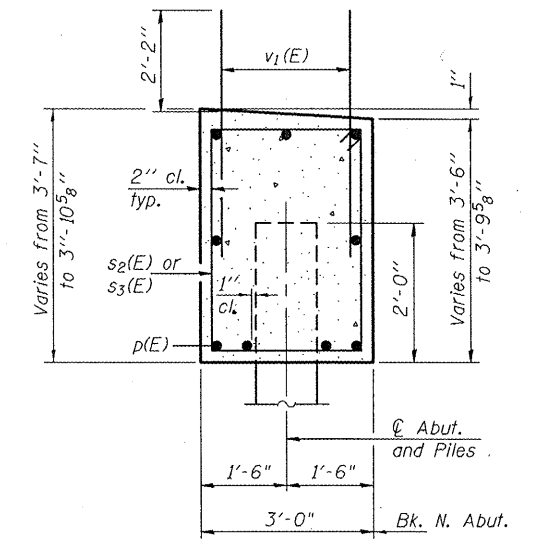
STATE OF ILLINOIS
DEPARTMENT OF TRANSPORTATION

ROUTE NO.	SECTION	COUNTY	SHEET NO.	SHEET NO. 15
FAS 1190	125B1BR	KNOX	94	51
FED. ROAD DIST. NO. 7		ILLINOIS	FED. AID PROJECT	

Contract No. 68087



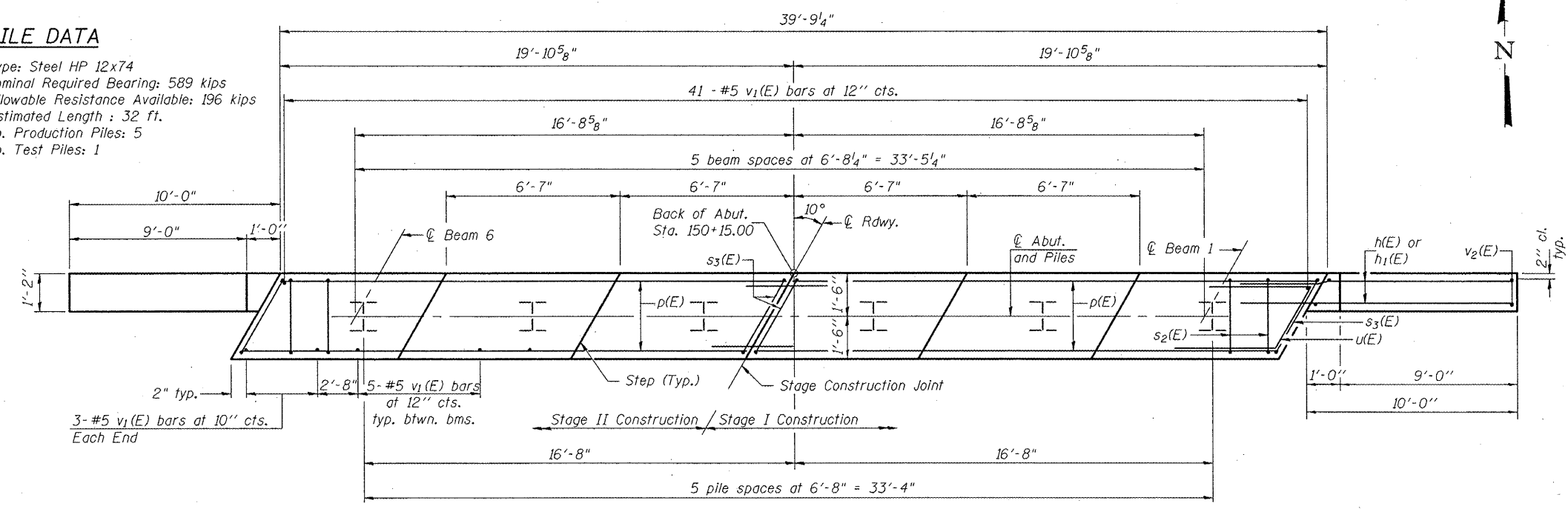
ELEVATION
(Looking North)
(Seat elevations given at ϕ Abut.)



SECTION A-A

PILE DATA

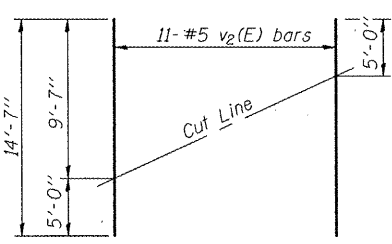
Type: Steel HP 12x74
Nominal Required Bearing: 589 kips
Allowable Resistance Available: 196 kips
Estimated Length: 32 ft.
No. Production Piles: 5
No. Test Piles: 1



PLAN

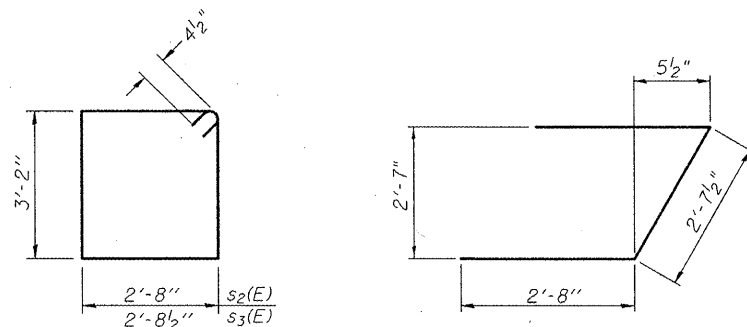
Notes:
Four steps monolithically with cap.
For details of piles and concrete encasement, see sheet 17 of 20.
For details of bar splicers, see sheet 18 of 20.

DESIGNED	SMR
CHECKED	FT
DRAWN	JMI, KBF
CHECKED	SMR/FT



FIELD CUTTING DIAGRAM

Order v2(E) full length. Cut as shown and use remainder of bars in opposite face.



BARS s2(E) & s3(E)

BAR u(E)

BILL OF MATERIAL

Bar	No.	Size	Length	Shape
h(E)	72	#6	12'-9"	—
h1(E)	4	#5	13'-0"	—
p(E)	18	#7	19'-6"	—
s2(E)	32	#4	12'-5"	□
s3(E)	4	#4	12'-6"	□
u(E)	8	#6	8'-0"	┘
v1(E)	72	#5	4'-4"	—
v2(E)	22	#5	14'-7"	—
Concrete Structures		Cu. Yd.	22.9	
Reinforcement Bars, Epoxy Coated		Pound	3210	
Structure Excavation		Cu. Yd.	106	
Furnishing Steel Piles, HP12x74		Foot	160	
Driving Piles		Foot	160	
Test Pile, Steel HP12x74		Each	1	
Concrete Encasement		Cu. Yd.	2.1	

US ROUTE 150 OVER HENDERSON CREEK
F.A.S. ROUTE 1190 - SEC. (125B1)BR
KNOX COUNTY
STATION 150+71.00
STRUCTURE NO. 048-0088

NORTH ABUTMENT