

STATE OF ILLINOIS
DEPARTMENT OF TRANSPORTATION
DIVISION OF HIGHWAYS

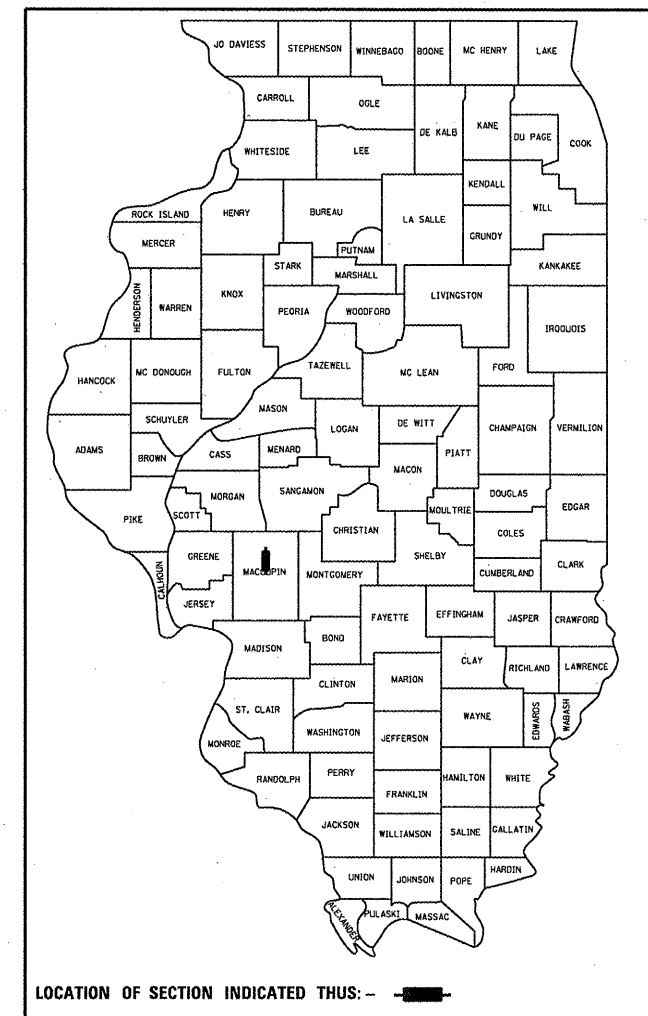
**PROPOSED
HIGHWAY PLANS**

FAP ROUTE 662 (IL 4 & IL 108)
SECTION (67)I, (109)I-2
PROJECT F-0662(067)
BRICK PAVEMENT PATCHING
MACOUPIN COUNTY

C-96-020-12

F.A.P. RTE.	SECTION	COUNTY	TOTAL SHEETS	SHEET NO.
662	(67)I, (109)I-2	MACOUPIN	7	1
		ILLINOIS	CONTRACT NO. 72F10	

D-96-020-12

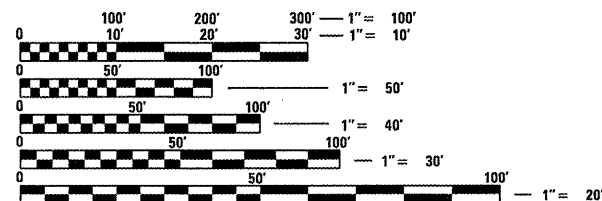


INDEX OF SHEETS

- 1 COVER SHEET
- 2 GENERAL NOTES/COMMITMENTS
- 3 SUMMARY OF QUANTITIES
- 4 TYPICAL SECTIONS
- 5 SCHEDULE OF QUANTITIES
- 6 PLAN VIEW OF CARLINVILLE SQUARE
- 7 DETAIL OF BRICK PAVEMENT REMOVAL AND REPLACEMENT

LIST OF STANDARDS

- 701502-04
- 701701-08
- 701901-02



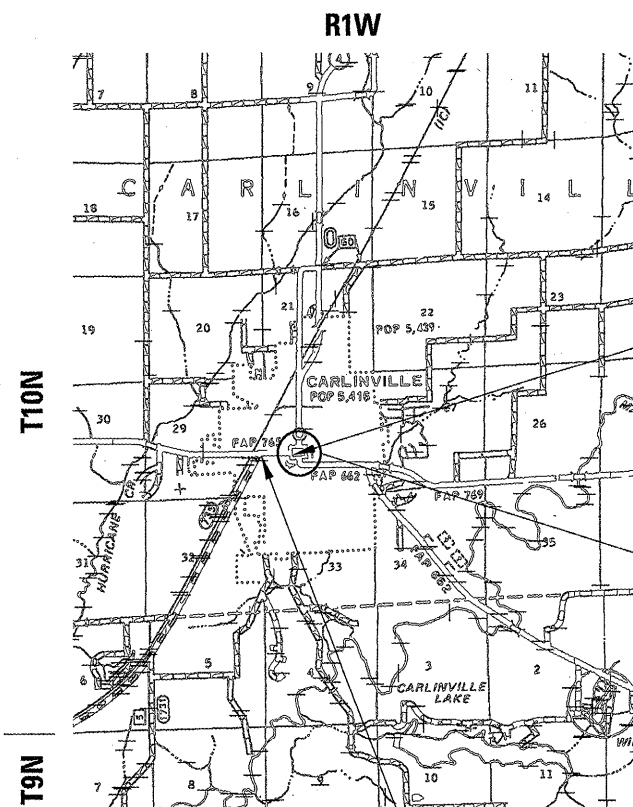
FULL SIZE PLANS HAVE BEEN PREPARED USING STANDARD ENGINEERING SCALES. REDUCED SIZED PLANS WILL NOT CONFORM TO STANDARD SCALES. IN MAKING MEASUREMENTS ON REDUCED PLANS, THE ABOVE SCALES MAY BE USED.

J.U.L.I.E.
JOINT UTILITY LOCATION INFORMATION FOR EXCAVATION
1-800-892-0123
OR 811

SENIOR TEAM LEADER: VINCE MADONIA 217-785-9046
TEAM LEADER: JAY EDWARDS 217-785-5321

CONTRACT NO. 72F10

ADT = 9400 (2009)
PV = 8667 (92.2%)
SU = 517 (5.5%)
MU = 216 (2.3%)



PROJECT BEGINS
STA 0+14 (IL 108)

PROJECT INCLUDES
CARLINVILLE SQUARE
(NO STATIONING)
(IL 4 & IL 108)

PROJECT ENDS
STA 15+00 (IL 108)

GROSS LENGTH = 1514.00 FT. = 0.287 MILE
NET LENGTH = 1514.00 FT. = 0.287 MILE

STATE OF ILLINOIS
DEPARTMENT OF TRANSPORTATION
DIVISION OF HIGHWAYS

SUBMITTED *November 10 20 11*

Rosa Z. Dink
DEPUTY DIRECTOR OF HIGHWAYS, REGION ENGINEER

December 9 20 11
Scott E. Stitt P.E.
ENGINEER OF DESIGN AND ENVIRONMENT

December 9 20 11
William R. Freyer
Interim DIRECTOR OF HIGHWAYS, CHIEF ENGINEER

**PRINTED BY THE AUTHORITY
OF THE STATE OF ILLINOIS**

GENERAL NOTES

- 1 ALL ELEVATIONS SHOWN IN THE PLANS ARE U. S. G. S. MEAN SEA LEVEL DATUM.
- 2 ANY REFERENCE TO STANDARDS THROUGHOUT THE PLANS SHALL BE INTERPRETED TO BE THE LATEST STANDARDS OF THE DEPARTMENT AS SHOWN IN THE PLANS.
- 3 EXISTING PAVEMENT DAMAGED DUE TO THE CONTRACTOR'S OPERATIONS, AND NOT OTHER WISE NECESSARY TO REPLACE, SHALL BE REPLACED AT THE EXPENSE OF THE CONTRACTOR.
- 4 THE LOCATIONS OF THOSE BURIED AND ABOVE GROUND UTILITIES SHOWN ARE APPROXIMATE. THE CONTRACTOR SHALL BE RESPONSIBLE FOR PROTECTING UTILITY PROPERTY FROM CONSTRUCTION OPERATIONS AS OUTLINED IN ARTICLE 107.26 OF THE STANDARD SPECIFICATIONS. THE J.U.L.I.E. NUMBER IS 800-892-0123. A MINIMUM OF FORTY-EIGHT HOURS ADVANCED NOTICE IS REQUIRED.
- 5 THE EXISTING ROAD SIGNS THAT INTERFERE WITH CONSTRUCTION SHALL BE RELOCATED AS DIRECTED BY THE ENGINEER. AFTER THE CONSTRUCTION IS COMPLETED, THE CONTRACTOR WILL REPLACE THE SIGNS AS DIRECTED BY THE ENGINEER. THIS WORK WILL NOT BE PAID FOR SEPARATELY BUT SHALL BE CONSIDERED INCIDENTAL TO THE CONTRACT.
- 6 WHERE SECTION OR SUBSECTION MONUMENTS ARE ENCOUNTERED, THE ENGINEER SHALL BE NOTIFIED BEFORE SUCH MONUMENTS ARE REMOVED. THE CONTRACTOR SHALL PROTECT AND CAREFULLY PRESERVE ALL PROPERTY MARKERS AND MONUMENTS UNTIL THE OWNER AND AUTHORIZED SURVEYOR OR AGENT HAS WITNESSED OR OTHERWISE REFERENCED THEIR LOCATION. IF THE ENGINEER DECIDES TO HAVE THE CONTRACTOR RESET THE MONUMENT, THIS WORK WILL BE PAID FOR IN ACCORDANCE WITH ARTICLE 109.04.

COMMITMENTS

- THE FIELD/RESIDENT ENGINEER SHALL CONTACT STUDIES & PLANS CONCERNING ANY MAJOR PLAN CHANGES TO MAKE SURE NO PREVIOUS COMMITMENTS (NOT LISTED) WERE MADE AFFECTING THE DESIGN AND ALLOW AN IMPROVED DESIGN FOR FUTURE PROJECTS.

DISTRICT SIX	
EXAMINED <u>November 8</u> 20 <u>11</u>	
<i>Bill Byr</i>	
OPERATIONS ENGINEER	
EXAMINED <u>Nov 8</u> 20 <u>11</u>	
<i>Tommy</i>	
PROJECT IMPLEMENTATION ENGINEER	
EXAMINED <u>Nov 10</u> 20 <u>11</u>	
<i>ARMU</i>	
PROGRAM DEVELOPMENT ENGINEER	

CODE NO.	ITEM	UNIT	TOTAL QUANTITY	CONSTR. CODE	
				80% FED 20% STATE ROADWAY 0005 URBAN	
67100100	MOBILIZATION	L SUM	1.0	1.0	
70102622	TRAFFIC CONTROL AND PROTECTION, STANDARD 701502	L SUM	1.0	1.0	
70102635	TRAFFIC CONTROL AND PROTECTION, STANDARD 701701	L SUM	1.0	1.0	
70103815	TRAFFIC CONTROL SURVEILLANCE	CAL DA	25.0	25.0	
X0325225	BRICK PAVEMENT REMOVAL AND REPLACEMENT	SO FT	7974.0	7974.0	
X0327207	BRICK JOINT FILLER	SO YD	14820.0	14820.0	
X0327208	DRAINAGE STRUCTURE PATCH	SO YD	13.0	13.0	
X0540000	BRICK PAVERS	SO FT	1994.0	1994.0	
X4420716	CLASS C PATCHES, TYPE I, 9 INCH (SPECIAL)	SO YD	11.0	11.0	
X4420718	CLASS C PATCHES, TYPE II, 9 INCH (SPECIAL)	SO YD	91.0	91.0	
X4420720	CLASS C PATCHES, TYPE III, 9 INCH (SPECIAL)	SO YD	182.0	182.0	
X4420722	CLASS C PATCHES, TYPE IV, 9 INCH (SPECIAL)	SO YD	397.0	397.0	

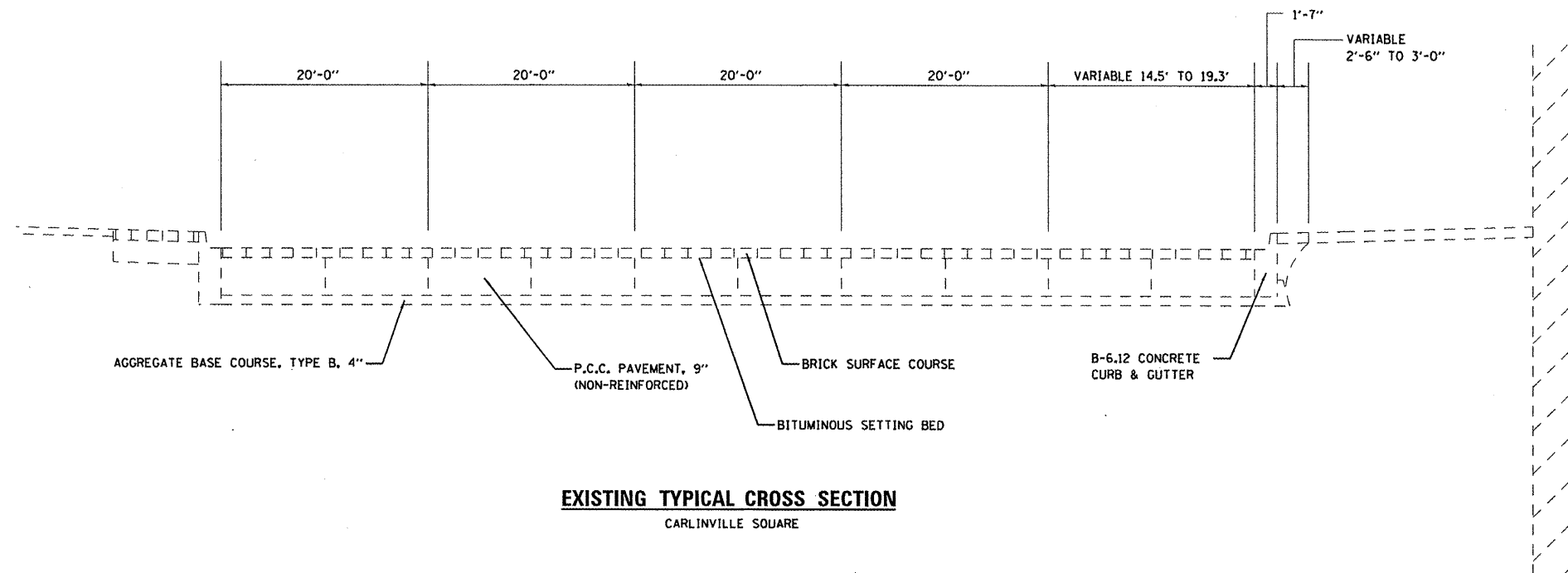
FILE NAME =	USER NAME = sparksgv	DESIGNED -	REVISED -
d:\pw\work\p\idat\sparksgv\0222065\067	PF10-sht-S00.dgn	DRAWN -	REVISED -
	PLOT SCALE = 100.0000' / 1" =	CHECKED -	REVISED -
	PLOT DATE = Nov-10-2011 08:26:32AM	DATE -	REVISED -

**STATE OF ILLINOIS
DEPARTMENT OF TRANSPORTATION**

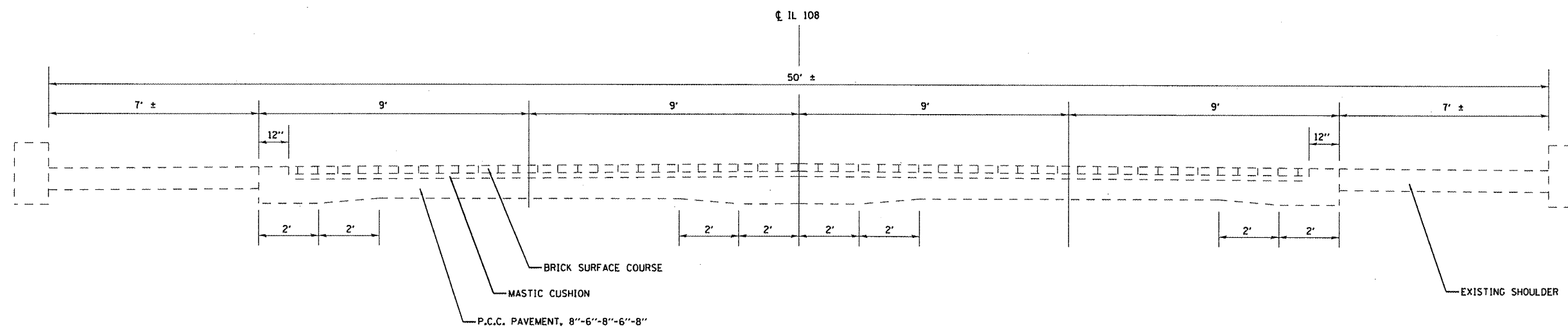
SUMMARY OF QUANTITIES

SCALE: SHEET NO. OF SHEETS STA. TO STA.

F.A.P. RTE.	SECTION	COUNTY	TOTAL SHEETS	SHEET NO.
662	(67), (109)-2	MACOUPIN	7	3
ILLINOIS FED. AID PROJECT			CONTRACT NO. 72F10	



EXISTING TYPICAL CROSS SECTION
CARLINVILLE SQUARE



EXISTING TYPICAL CROSS SECTION
IL 108 (MAIN STREET)

FILE NAME =	USER NAME = sparksgv	DESIGNED -	REVISED -
cr:\pwwork\pwwork\sparksgv\0222065\0672\F10-shr-typical.dgn		DRAWN -	REVISED -
	PLOT SCALE = 30.0000' / in.	CHECKED -	REVISED -
	PLOT DATE = Nov-09-2011 04:05:55PM	DATE -	REVISED -

STATE OF ILLINOIS
DEPARTMENT OF TRANSPORTATION

TYPICAL SECTION

SCALE: SHEET NO. OF SHEETS STA. TO STA.

F.A.P. RTE.	SECTION	COUNTY	TOTAL SHEETS	SHEET NO.
662	(671), (109)I-2	MACOUPIN	7	4
CONTRACT NO. 72F10				
ILLINOIS FED. AID PROJECT				

LENGTH	WIDTH		BRICK PAV'T REM AND REPL SQ FT	CLASS C PATCH 9" (SPECIAL)				DRAINAGE STRUCTURE PATCH SQ YD
				TYPE 1 SQ YD	TYPE 2 SQ YD	TYPE 3 SQ YD	TYPE 4 SQ YD	

SQUARE TO WEST STREET

16	6	LT	144.0		10.7			
5	2.5	LT						1.4

INLET

WEST STREET TO PLUM STREET

40	9.5	CL					42.2	
30	8	CL	320.0				26.7	
6	4	LT						2.7
32	6	CL	272.0			21.3		
2	2	RT	16.0	0.4				
4	3	LT	30.0	1.3				

INLET

PLUM STREET TO OAK STREET

6	4	CL						2.7
20	8	RT	220.0			17.8		
115	8	RT	1170.0				102.2	

MANHOLE

OAK STREET TO LOCUST STREET

4	4	CL						1.8
6	6	LT	64.0	4.0				
10	4	LT						4.4
36	6	FULL WIDTH	304.0			24.0		

MANHOLE

INLET

LOCUST STREET TO END OF PROJECT

36	6	FULL WIDTH	304.0			24.0		
36	6	FULL WIDTH	304.0			24.0		

LENGTH	WIDTH		BRICK PAV'T REM AND REPL SQ FT	CLASS C PATCH 9" (SPECIAL)				DRAINAGE STRUCTURE PATCH SQ YD
				TYPE 1 SQ YD	TYPE 2 SQ YD	TYPE 3 SQ YD	TYPE 4 SQ YD	

CARLINVILLE SQUARE (WEST SIDE PROCEEDING COUNTERCLOCKWISE)

37	3		195.0		12.3			
12	8		140.0		10.7			
7	3		45.0	2.3				
26	5		196.0		14.4			
28	13		450.0				40.4	
45	15		799.0				75.0	
38	12		560.0				50.7	
9	8		110.0		8.0			
50	3		260.0			16.7		
36	6		304.0			24.0		
18	16		360.0				32.0	
15	3		85.0		5.0			
30	3		160.0		10.0			
8	3		50.0	2.7				
23	3		125.0		7.7			
45	3		235.0			15.0		
15	7		153.0		11.7			
50	5		364.0				27.8	
45	3		235.0			15.0		

TOTALS	7974.0	10.7	90.5	181.8	397.0	12.9
	SQ FT	SQ YD	SQ YD	SQ YD	SQ YD	SQ YD
	BRICK PAV'T REM AND REPL	TYPE 1	TYPE 2	TYPE 3	TYPE 4	DRAINAGE STRUCTURE PATCH
		CLASS C PATCH 9" (SPECIAL)				
USE	7974.0	11.0	91.0	182.0	397.0	13.0

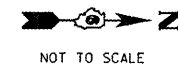
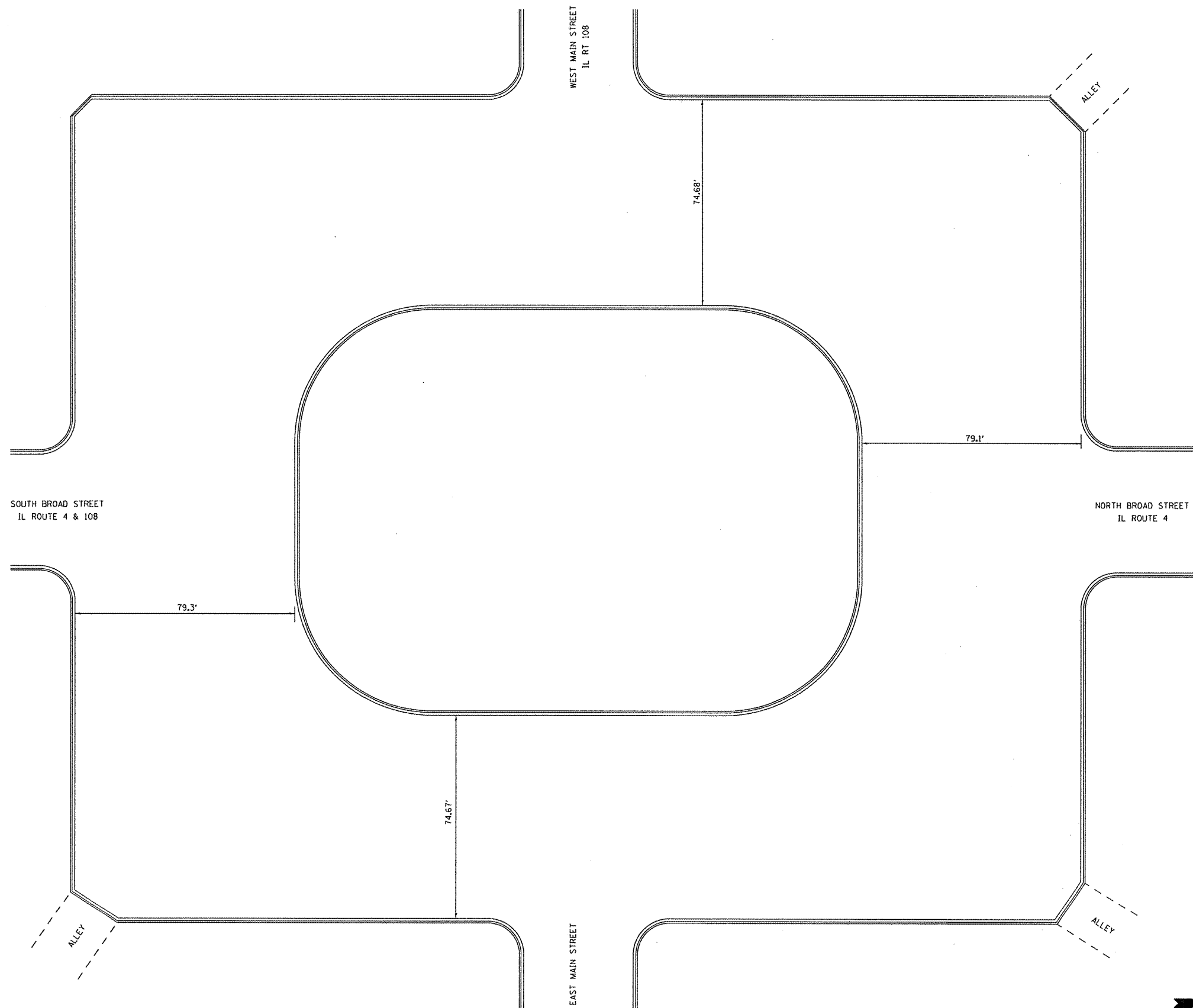
FILE NAME =	USER NAME = sparksgv	DESIGNED -	REVISED -
c:\pwwork\pvidot\sparksgv\d0222065\0672	10-shs-schedule.dgn	DRAWN -	REVISED -
	PLOT SCALE = 100.0000' / 1" =	CHECKED -	REVISED -
	PLOT DATE = Nov-09-2011 04:06:00PM	DATE -	REVISED -

**STATE OF ILLINOIS
DEPARTMENT OF TRANSPORTATION**

SCHEDULE OF QUANTITIES

SCALE: SHEET NO. OF SHEETS STA. TO STA.

F.A.P. RTE.	SECTION	COUNTY	TOTAL SHEETS	SHEET NO.
662	(67), (109)-2	MACOUPIN	7	5
ILLINOIS FED. AID PROJECT			CONTRACT NO. 72F10	



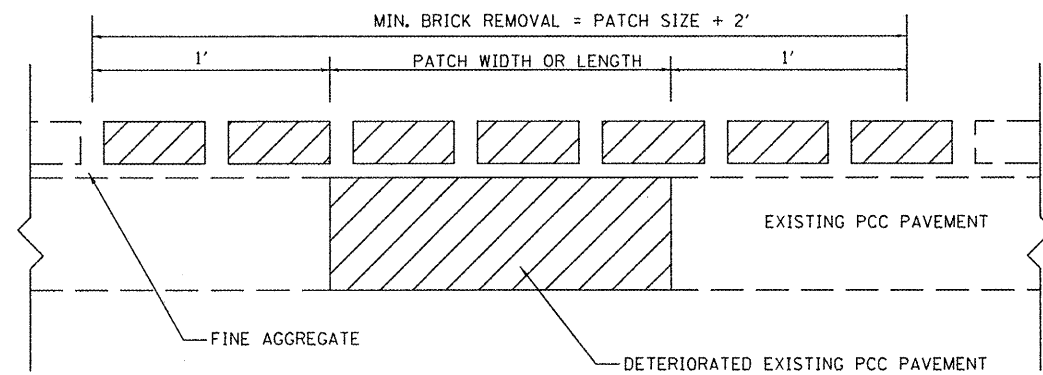
FILE NAME =	USER NAME = sparksgv	DESIGNED -	REVISED -
c:\pwork\pvidot\sparksgv\d0222065\057	PF10-shd-detail-carlinvillesquare.dgn	DRAWN -	REVISED -
	PLOT SCALE = 40.0000' / in.	CHECKED -	REVISED -
	PLOT DATE = Nov-09-2011 04:06:07PM	DATE -	REVISED -

**STATE OF ILLINOIS
DEPARTMENT OF TRANSPORTATION**

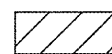
CARLINVILLE CITY SQUARE

SCALE: SHEET NO. OF SHEETS STA. TO STA.

F.A.P. RTE.	SECTION	COUNTY	TOTAL SHEETS	SHEET NO.
662	(67), (109)1-2	MACOUPIN	7	6
CONTRACT NO. 72F10				
ILLINOIS FED. AID PROJECT				



DETAIL OF BRICK PAVEMENT REMOVAL AND REPLACEMENT

 REMOVAL AND REPLACEMENT LIMITS

FILE NAME =	USER NAME = sparksgu	DESIGNED -	REVISED -
ct:\pw\work\puidot\sparksgu\d0222065\067	PF10-shi-details.dgn	DRAWN -	REVISED -
	PLOT SCALE = 40.0000 ' / 1" =	CHECKED -	REVISED -
	PLOT DATE = Nov-09-2011 04:06:13PM	DATE -	REVISED -

STATE OF ILLINOIS
DEPARTMENT OF TRANSPORTATION

DETAILS

SCALE: SHEET NO. OF SHEETS STA. TO STA.

F.A.P. RTE.	SECTION	COUNTY	TOTAL SHEETS	SHEET NO.
662	(67), (109)-2	MACOUPIN	7	7
ILLINOIS FED. AID PROJECT			CONTRACT NO. 72F10	