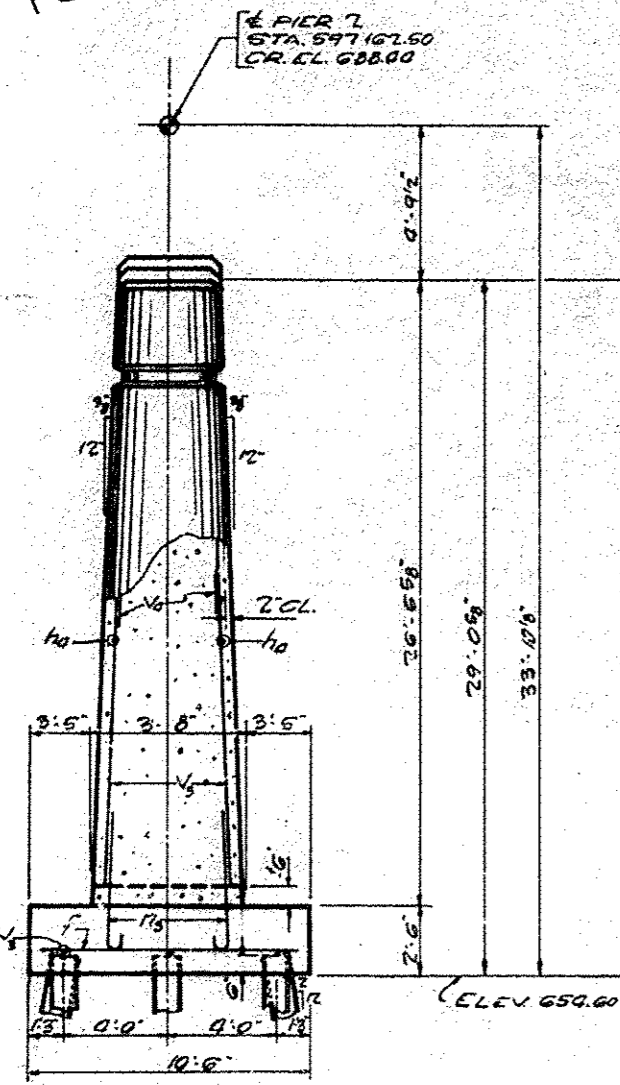


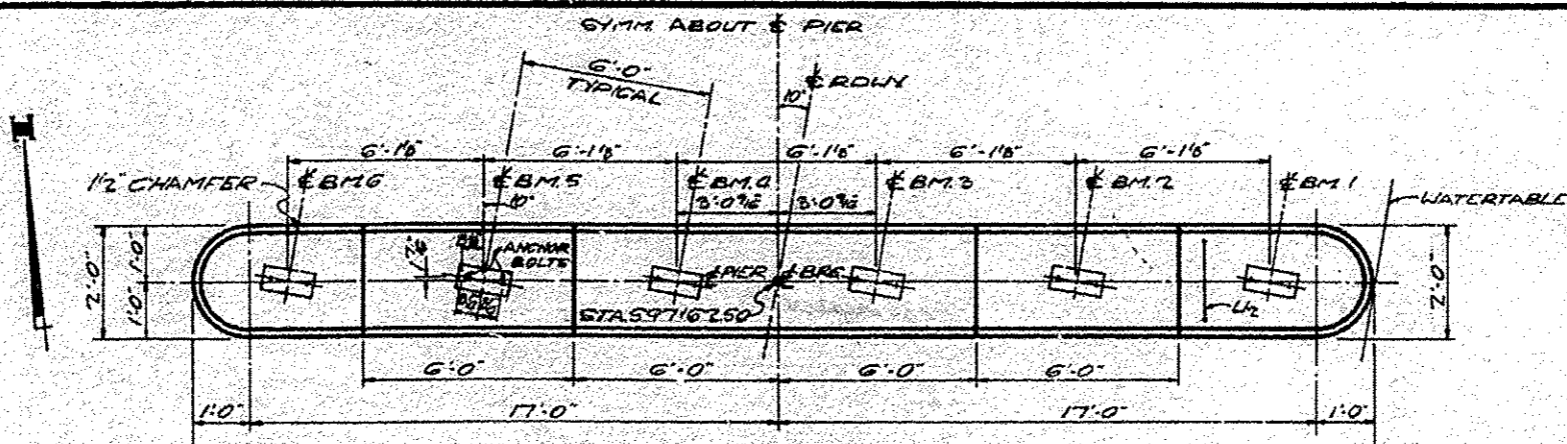
ROUTE NO.	SEC.	COUNTY	TOTAL SHEETS	SHEET NO.
F.A. 9	103-B	WARREN	19	13
FED. ROAD DIST. NO. 7			PROJECT	

FOR INFORMATION ONLY

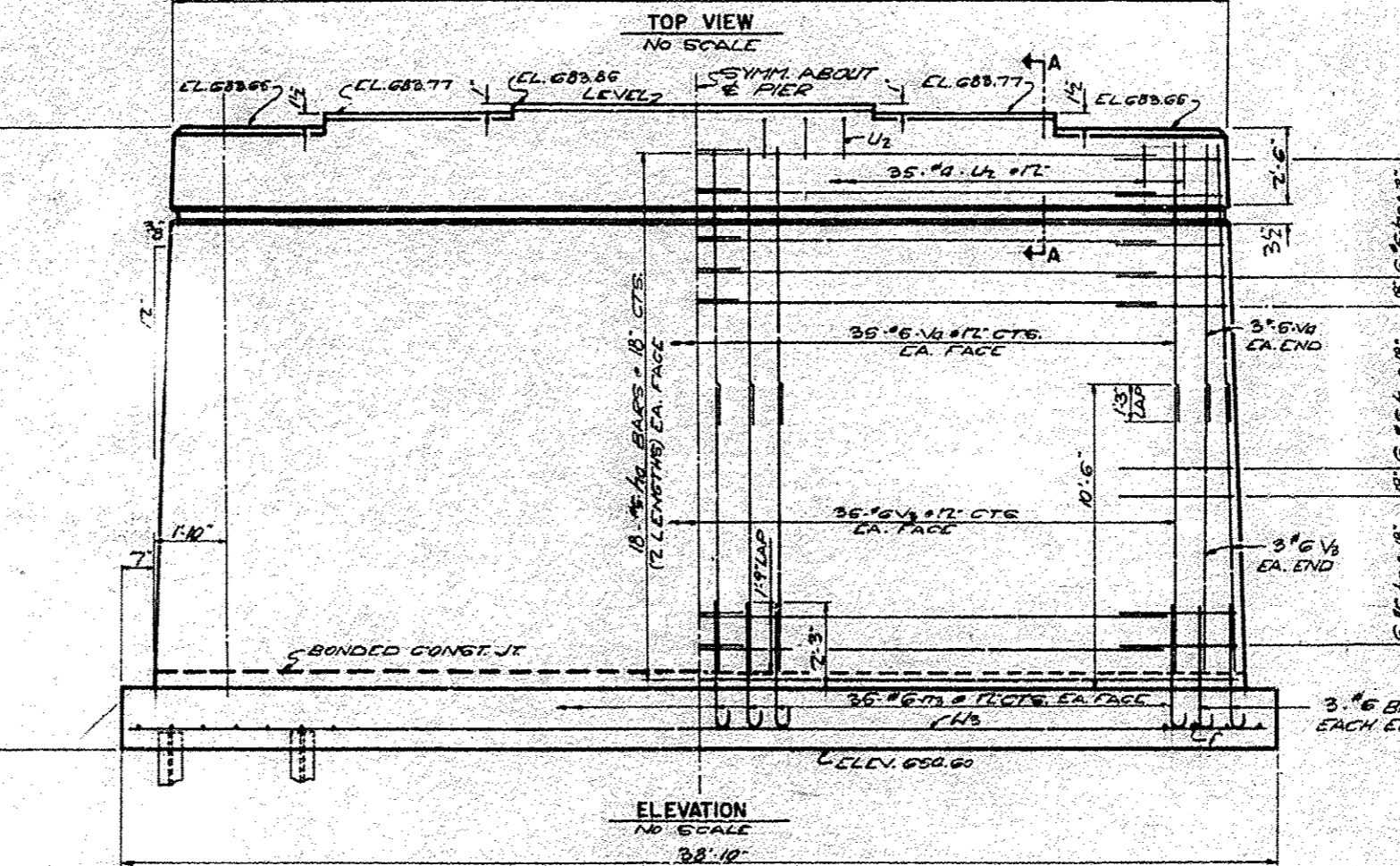


END VIEW  
NO SCALE

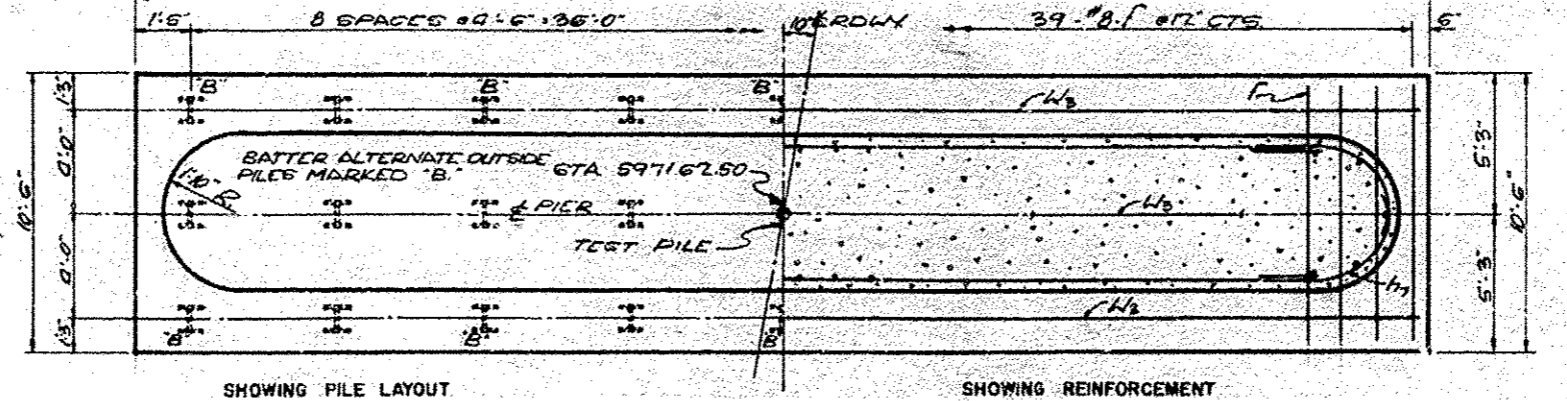
**PILE DATA**  
 TYPE STEEL H PILES (8 BP 36)  
 MIN. CAPACITY 30 TONS  
 EST. LENGTH 13'-0"  
 NO. REED. 2611 TEST PILE  
 MIN. PENETRATION DRIVE TO REFUSAL  
 IN ROCK



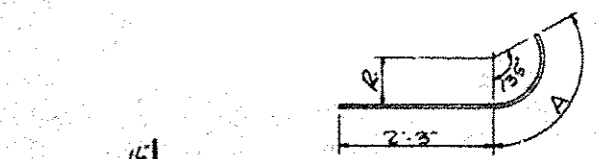
TOP VIEW  
NO SCALE



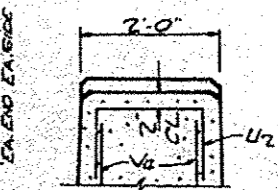
ELEVATION  
NO SCALE



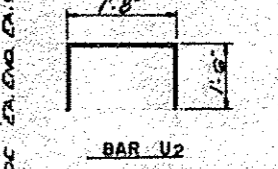
FOOTING PLAN  
NO SCALE



NOTCH DETAIL



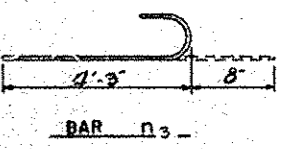
SECTION A-A



BAR U2

BAR	R	A
h5	10	2'-0"
h6	1'-2"	2'-9"
h7	1'-5"	3'-0"

DETAIL OF BARS  
h5, h6, h7



BAR n3

**BILL OF MATERIAL**

BAR	NO.	SIZE	LENGTH	SHAPE
f	39	#8	10'-3"	—
h5	72	#5	17'-6"	—
h6	24	#5	0'-3"	—
h7	24	#5	5'-0"	—
h7	24	#6	5'-7"	—
n3	76	#6	0'-11"	—
U2	311	#2	0'-8"	□
U2	3	#6	38'-6"	—
V6	75	#5	17'-3"	—
V6	76	#6	10'-0"	—
CLAS A CONCRETE CU YDS. 189.2				
REINFORCEMENT BARS LBS. 6110				
TURN STEEL PILES 8 BP 36 LF 668				
DRIVING STEEL PILES LIFT 668				
TEST PILES (STEEL) 8 BP 36 LF 1				

PIER 2  
 F.A. RTE 9 SEC 103-B  
 F.A. 9 OVER CEDAR CREEK  
 WARREN CO, ILLINOIS  
 STA. 697130

△ SHEET ADDED 1-6-17