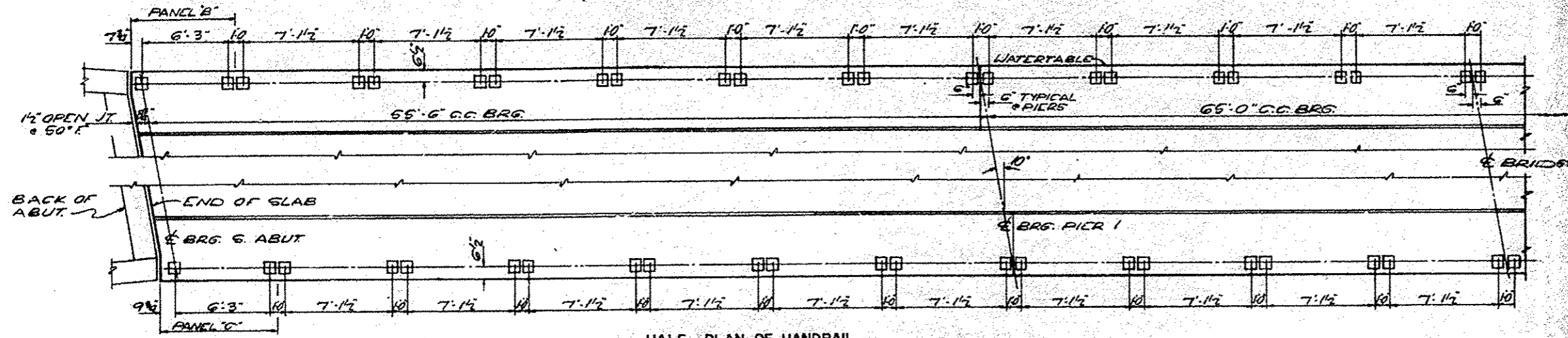
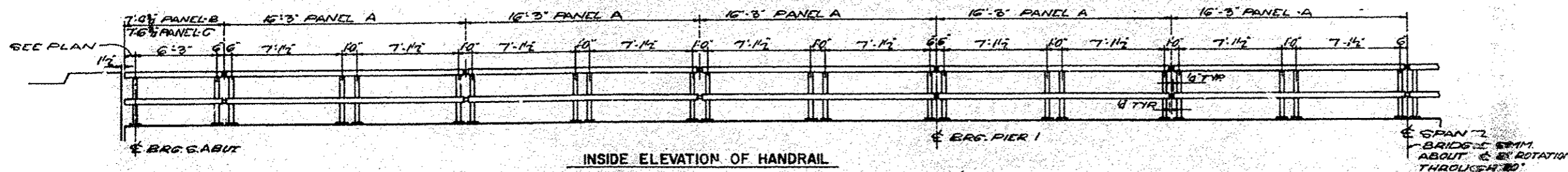
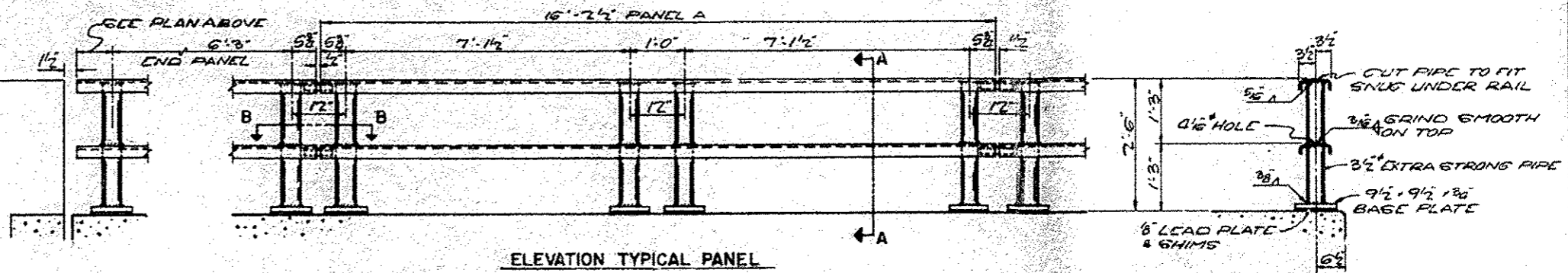


NO.	SEC.	COUNTY	SHEET	SHEET
F.A. 9	103-B	WARREN	19	4
FED. ROAD DIST. NO. 7 PROJECT				



FOR INFORMATION ONLY

HALF PLAN OF HANDRAIL
SYMM. ABOUT & BRIDGE
BY ROTATION THROUGH 180°



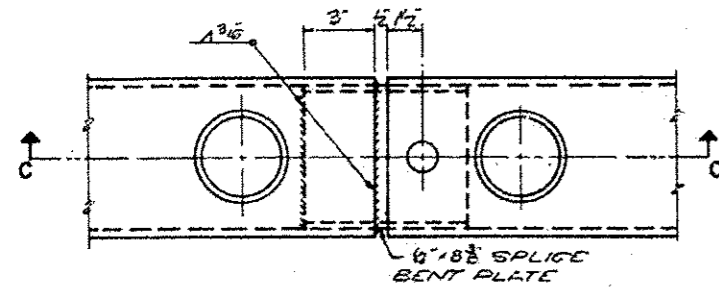
ELEVATION TYPICAL PANEL

SECTION A-A

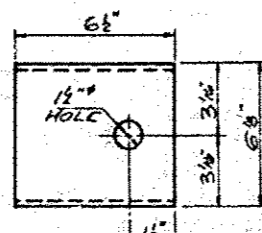
GENERAL NOTES:
AFTER EREC. KON ALL BOLTS AND WASHERS
SHALL BE PAINTED WITH ONE COAT OF RED
LEAD AND TWO COATS OF ALUMINUM PAINT.
PROVIDE 1-1/8" AND 7-1/8" GIMES FOR 50%
OF THE POSTS.

BILL OF MATERIAL

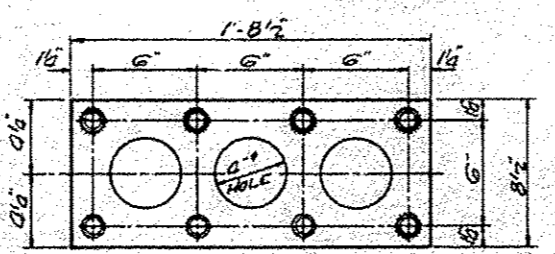
ITEM	UNIT	QUAN.
METAL HANDRAIL	LIN. FT.	355



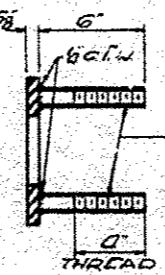
SECTION B-B



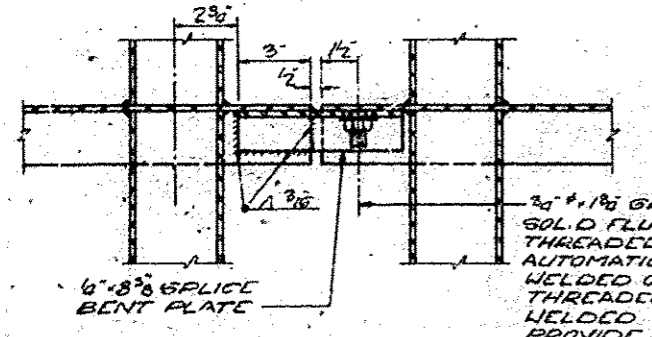
PLAN



ANCHOR DEVICE
FOR DOUBLE POST WITHIN
EACH PANEL

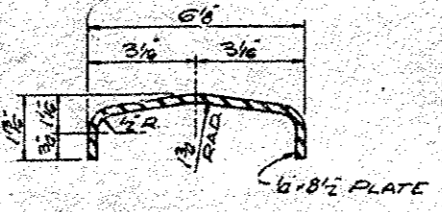


ANCHOR DEVICE
FOR SINGLE POST AT EACH
END OF PANEL

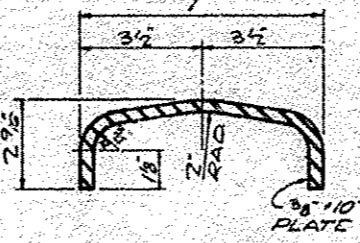


SECTION C-C

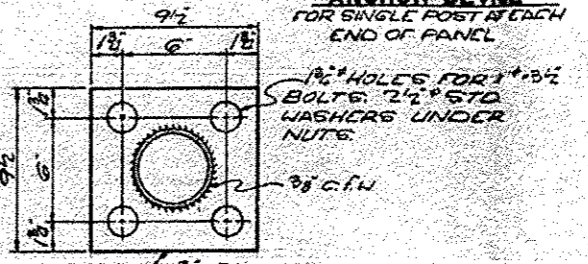
3/4" x 1 1/2" GRANULAR OR
SOLID FLUX FILLED STUD,
THREADED FULL LENGTH,
AUTOMATICALLY END
WELDED OR 3/4" x 1 1/2" FULLY
THREADED STUD
WELDED WITH 1/2" C.F.W.
PROVIDE WASHER AND
LOCKNUT



DETAIL OF SPLICE
BENT PLATE



DETAIL OF RAIL



BASE PLATE
ALL POSTS-SUPERSTRUCTURE

HANDRAIL DETAILS
F.A. RTE. 9 SEC. 103-B
F.A. 9 OVER CEDAR CREEK
WARREN CO., ILLINOIS
STA. 597+30