

STATE OF ILLINOIS
DEPARTMENT OF TRANSPORTATION

F.A.S. RTE.	SECTION	COUNTY	TOTAL SHEETS	SHEET NO.
1512	2X-BDR	CHAMPAIGN	23	1
		ILLINOIS	CONTRACT NO. 70B79	

FOR INDEX OF SHEETS, SEE SHEET NO. 2

FOR SUMMARY OF QUANTITIES, SEE SHEET NO. 3-4

PROPOSED HIGHWAY PLANS

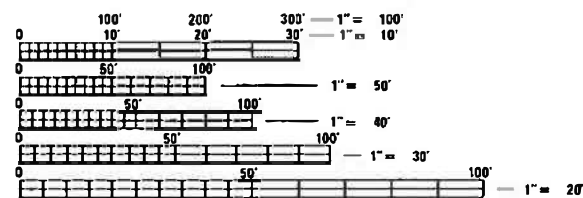
F.A.S. ROUTE 1512 (US 150)
SECTION 2X-BDR
PROJECT HBFP-CL6Z(312)
BRIDGE DECK OVERLAY
CHAMPAIGN COUNTY

C-95-063-21

CURRENT TRAFFIC DATA

FAS 1512 (US 150)		
2021	ADT	5,700
2031	ADT	6,000
2041	ADT	6,300
2041	DHV (AM)	470
2041	DHV (PM)	680
	PI/PC%	92.8
	SU%	4.6
	MU%	2.6

DESIGN DESIGNATION
MAJOR COLLECTOR

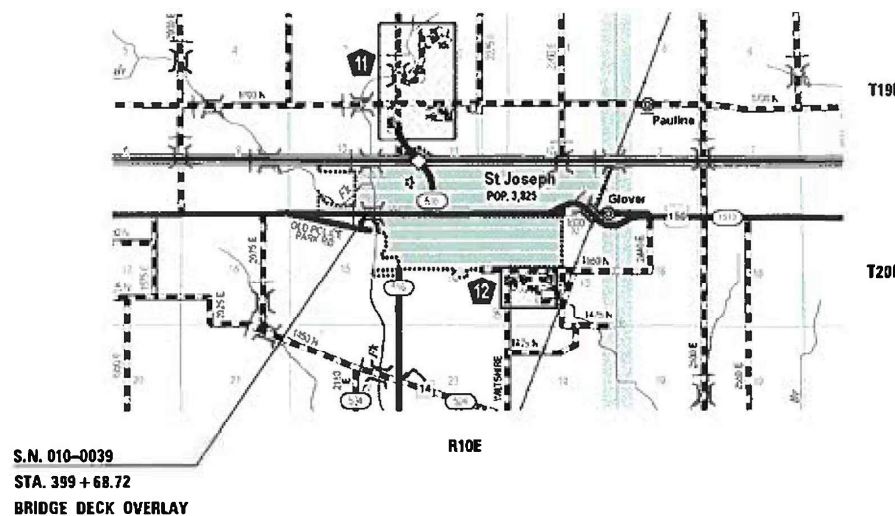


FULL SIZE PLANS HAVE BEEN PREPARED USING STANDARD ENGINEERING SCALES. REDUCED SIZED PLANS WILL NOT CONFORM TO STANDARD SCALES. IN MAKING MEASUREMENTS ON REDUCED PLANS, THE ABOVE SCALES MAY BE USED.

J.U.L.I.E.
JOINT UTILITY LOCATION INFORMATION FOR EXCAVATORS
1-800-892-0123
OR 811

PROJECT ENGINEER: TIM BRANDENBURG
PROJECT MANAGER: JEFF M. SHERER

CONTRACT NO. 70B79



GROSS LENGTH = 354.32 FT. = 0.067 MILE
NET LENGTH = 354.32 FT. = 0.067 MILE

STATE OF ILLINOIS
DEPARTMENT OF TRANSPORTATION

SUBMITTED 10/11 20 22
Kensil A. Barnett REGIONAL ENGINEER
December 9, 2022
Steph A. Elk
ENGINEER OF DESIGN AND ENVIRONMENT
December 9, 2022
Steph M. Smith
DIRECTOR OF HIGHWAYS PROJECT IMPLEMENTATION

**PRINTED BY THE AUTHORITY
OF THE STATE OF ILLINOIS**

INDEX OF SHEETS

SHEET NO.	ITEM
1	COVER SHEET
2	INDEX OF SHEETS/ HIGHWAY STANDARDS/ GENERAL NOTES
3-4	SUMMARY OF QUANTITIES
5	EXISTING TYPICAL CROSS-SECTION
6-8	STAGING DETAILS
9	TEMPORARY CONCRETE BARRIER FOR STAGE CONSTRUCTION
10	GENERAL PLAN AND ELEVATION SHEET
11-13	DETAIL OF DECK PATCHING
14	WEARING SURFACE PLAN
15	BRIDGE APPROACH SHOULDER REMOVAL DETAIL
16	PC CONCRETE BRIDGE APPROACH SHOULDER PAVT. (SPECIAL) DETAIL
17	APPROACH PAVEMENT DETAIL
18	DETAIL OF STRUCTURAL REPAIR OF CONCRETE
19	WIDTH RESTRICTION SIGNING DETAIL
20-23	LOCATIONS OF WIDTH RESTRICTION SIGNING

LIST OF STANDARDS

STANDARD NO.	DESCRIPTION
000001-08	STANDARD SYMBOLS, ABBREVIATIONS AND PATTERNS
001001-02	AREAS OF REINFORCEMENT BARS
001006	DECIMAL OF AN INCH AND OF A FOOT
610001-09	SHOULDER INLET WITH CURB (NFORMATION ONLY)
631031-18	TRAFFIC BARRIER TERMINAL TYPE 6 (INFORMAION ONLY)
701001-02	OFF RD OPERATIONS, 2L, 2W, 15' FROM PAVEMENT EDGE
701006-05	OFF RD OPERATIONS, 2L, 2W, 15' TO 24" FROM PAVEMENT EDGE
701011-04	OFF RD MOVING OPERATION, 2L, 2W, DAY ONLY
701201-05	LANE CLOSURE, 2L, 2W, DAY ONLY FOR SPEEDS ≥ 45 MPH
701301-04	LANE CLOSURE, 2L, 2W, MOVING OPERATIONS
701321-18	LANE CLOSURE, 2L, 2W, BRIDGE REPAIR + BARRIER
701901-08	TRAFFIC CONTROL DEVICES
704001-08	TEMPORARY CONCRETE BARRIER

GENERAL NOTES

G.N.-100

ENGLISH UNITS OF MEASUREMENT SHALL GOVERN OVER AND SUPERSEDE ANY METRIC UNITS SHOWN IN THIS CONTRACT. WHERE INCLUDED, METRIC UNITS ARE FOR INFORMATION ONLY.

G.N.-105.09

ALL ELEVATIONS SHOWN IN PLANS ARE BASED ON NORTH AMERICAN VERTICAL DATUM OF 1988 (NAVD 88).

G.N.-406

THE QUANTITIES INCLUDED IN THE PLANS FOR HOT-MIX ASPHALT RESURFACING ARE INTENDED TO GIVE THE COVERAGE SHOWN ON THE TYPICAL CROSS SECTIONS. IT IS NOT INTENDED TO INCREASE THE THICKNESS OF THE HOT-MIX ASPHALT MIXTURE IN ORDER TO USE ALL OF THE QUANTITIES INCLUDED IN THE CONTRACT.

G.N. -406H

MIXTURE REQUIREMENTS

THE FOLLOWING MIXTURE REQUIREMENTS ARE APPLICABLE FOR THIS PROJECT:

Location	US 150	US 150
Mixture Use	Surface	Patches
AC/PG	PG 64-22	PG 64-22
Design Air Voids	4.0% @ Ndes=50	4.0% @ Ndes=50
Mix Comp(Gradation)	IL 9.5	IL 19.0
Friction Aggregate	Mix D	N.A.
Mixture Weight	112	112
Quality Management Program	QC/QA	QC/QA
Sublot Size	3000	3000
Material Transfer Device (Required ?)	NO	NO

G.N.-1004.01

COARSE AGGREGATE GRADATION CA-10 MAY BE USED WHENEVER COARSE AGGREGATE CA-6 IS SPECIFIED IN THE STANDARD SPECIFICATIONS.

THERE ARE NO COMMITMENTS ASSOCIATED WITH THIS PROJECT

MODEL: \\MODELS\MAME5
FILE: \\mame5\pub\lib\c-22\beniteley.com\PHWDOT\Documents\DOT Offices\Bnriteley_S\Projects\05707979\CAD\DATA\Structures\707979-24-Index-General\Notes.dgn

USER NAME = Jeff.Sherer	DESIGNED - JMS	REVISED - _____
	DRAWN - JMS	REVISED - _____
PLOT SCALE = 40.0000 ' / in.	CHECKED - _____	REVISED - _____
PLOT DATE = 9/15/2022	DATE - 031220	REVISED - _____

STATE OF ILLINOIS
DEPARTMENT OF TRANSPORTATION

INDEX OF SHEETS/HIGHWAY STANDARDS
GENERAL NOTES

SCALE: NONE SHEET 1 OF 1 SHEETS STA. _____ TO STA. _____

F.A.S. RTE.	SECTION	COUNTY	TOTAL SHEETS	SHEET NO.
1512	2X-BDR	CHAMPAIGN	23	2
CONTRACT NO. 70B79				
ILLINOIS FED. AID PROJECT				

CHAMPAIGN COUNTY
 FAS 1512 (US 150)
 RURAL TWO-LANE
 BRIDGE DECK OVERLAY
 S.N. 0010-0039
 80% STATE 20% FED

CODE NO.	ITEM	UNIT	TOTAL QUANTITY	0059
20200100	EARTH EXCAVATION	CU YD	3.0	3.0
40600290	BITUMINOUS MATERIALS (TACK COAT)	POUND	90.0	90.0
40600982	HOT-MIX ASPHALT SURFACE REMOVAL - BUTT JOINT	SQ YD	200.0	200.0
40604060	HOT-MIX ASPHALT SURFACE COURSE, IL-9.5, MIX "D", N50	TON	17.0	17.0
44201809	CLASS D PATCHES, TYPE IV, 13 INCH	SQ YD	27.0	27.0
50102400	CONCRETE REMOVAL	CU YD	2.1	2.1
50300300	PROTECTIVE COAT	SQ YD	1,026.0	1,026.0
50800205	REINFORCEMENT BARS, EPOXY COATED	POUND	110.0	110.0
67000500	ENGINEER'S FIELD OFFICE, TYPE B	CAL MO	6.0	6.0
67100100	MOBILIZATION	L SUM	1.0	1.0
70100405	TRAFFIC CONTROL AND PROTECTION, STANDARD 701321	EACH	1.0	1.0
70100450	TRAFFIC CONTROL AND PROTECTION, STANDARD 701201	L SUM	1.0	1.0
70106500	TEMPORARY BRIDGE TRAFFIC SIGNALS	EACH	1.0	1.0
70400100	TEMPORARY CONCRETE BARRIER	FOOT	612.5	612.5
70400200	RELOCATE TEMPORARY CONCRETE BARRIER	FOOT	612.5	612.5

MODEL: \\MODELS\MAME\...
 FILE: \\MODELS\MAME\...

USER NAME = Jeff.Sherer	DESIGNED - _____	REVISED - _____
PLOT SCALE = 40.0000 ' / in.	CHECKED - _____	REVISED - _____
PLOT DATE = 10/6/2022	DATE - _____	REVISED - _____

**STATE OF ILLINOIS
 DEPARTMENT OF TRANSPORTATION**

SUMMARY OF QUANTITIES

SCALE: NONE SHEET 1 OF 2 SHEETS STA. _____ TO STA. _____

F.A.S. RTE.	SECTION	COUNTY	TOTAL SHEETS	SHEET NO.
1512	2X-BDR	CHAMPAIGN	23	3
CONTRACT NO. 70B79				
ILLINOIS FED. AID PROJECT				

CHAMPAIGN COUNTY
 FAS 1512 (US 150)
 RURAL TWO-LANE
 BRIDGE DECK OVERLAY
 S.N. 0010-0039
 80% STATE 20% FED

CODE NO.	ITEM	UNIT	TOTAL QUANTITY	0059
70600250	IMPACT ATTENUATORS, TEMPORARY (NON- REDIRECTIVE), TEST LEVEL 3	EACH	2.0	2.0
70600350	IMPACT ATTENUATORS, RELOCATE (NON- REDIRECTIVE), TEST LEVEL 3	EACH	2.0	2.0
X4201510	P.C. CONCRETE BRIDGE APPROACH SHOULDER PAVEMENT (SPECIAL)	SQ YD	40.0	40.0
X5030250	BRIDGE DECK GROOVING (LONGITUDINAL)	SQ YD	993.0	993.0
X7200201	WIDTH RESTRICTION SIGNING	L SUM	1.0	1.0
Z0001495	BRIDGE APPROACH SHOULDER REMOVAL	SQ YD	27.0	27.0
Z0012111	BRIDGE DECK FLY ASH OR GGBF SLAG CONCRETE OVERLAY, 2 1/2"	SQ YD	1,026.0	1,026.0
Z0012130	BRIDGE DECK SCARIFICATION 3/4"	SQ YD	1,026.0	1,026.0
Z0012754	STRUCTURAL REPAIR OF CONCRETE (DEPTH EQUAL TO OR LESS THAN 5 INCHES)	SQ FT	27.0	27.0
Z0016001	DECK SLAB REPAIR (FULL DEPTH, TYPE I)	SQ YD	1.0	1.0
Z0016002	DECK SLAB REPAIR (FULL DEPTH, TYPE II)	SQ YD	23.0	23.0
Z0029090	DIAMOND GRINDING (BRIDGE SECTION)	SQ YD	895.0	895.0

SPECIALTY ITEMS (NONE)

MODEL: I:\MODEL\MAME
 FILE: MAME: p:\pub\cpx\bea\cpx.com\PIV\DOT\Documents\DOT_offices\Dir\dr: S:\Project\0570879\CADD\Drawings\Structures\70B79_sch-S00.dgn

USER NAME = Timothy,Brandenburg	DESIGNED - _____	REVISED - _____
	DRAWN - _____	REVISED - _____
PLOT SCALE = 40,0000 * / in.	CHECKED - _____	REVISED - _____
PLOT DATE = 10/11/2022	DATE - _____	REVISED - _____

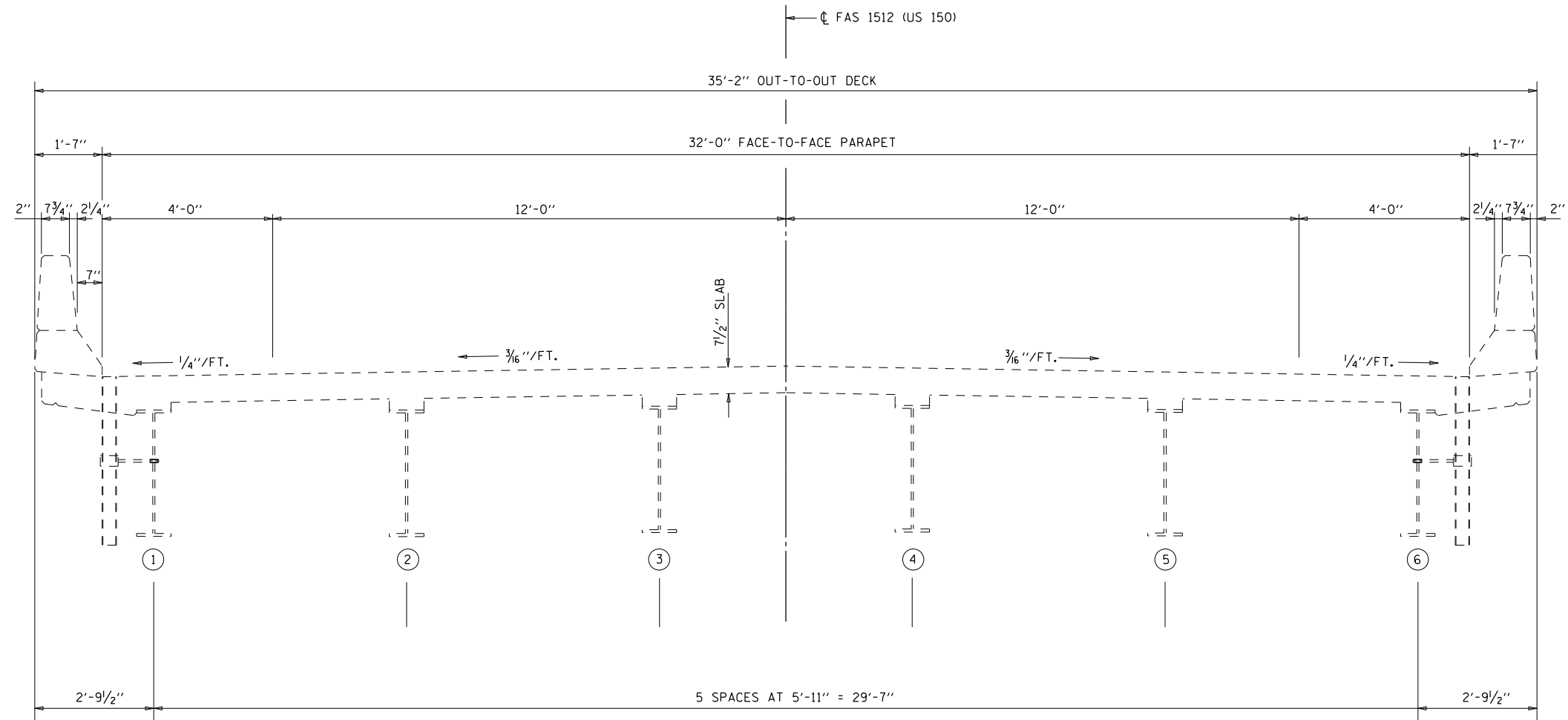
STATE OF ILLINOIS
 DEPARTMENT OF TRANSPORTATION

SUMMARY OF QUANTITIES

SCALE: NONE SHEET 2 OF 2 SHEETS STA. _____ TO STA. _____

F.A.S. RTE.	SECTION	COUNTY	TOTAL SHEETS	SHEET NO.
1512	2X-BDR	CHAMPAIGN	23	4
			CONTRACT NO. 70B79	
			ILLINOIS FED. AID PROJECT	

**EXISTING TYPICAL CROSS-SECTION
(LOOKING EAST)**



MODEL: \\MODELMAME
 FILE: \\MODELMAME\Public\2022\79\CD\Drawings\DOT\Office\Drawings\Structures\70B79\2x-BDR\StructurePlans.dgn

USER NAME = Jeff.Sherer	DESIGNED - JMS	REVISED -
	DRAWN - JMS	REVISED -
PLOT SCALE = 40.0000 ' / in.	CHECKED -	REVISED -
PLOT DATE = 12/6/2022	DATE - 05/20/20	REVISED -

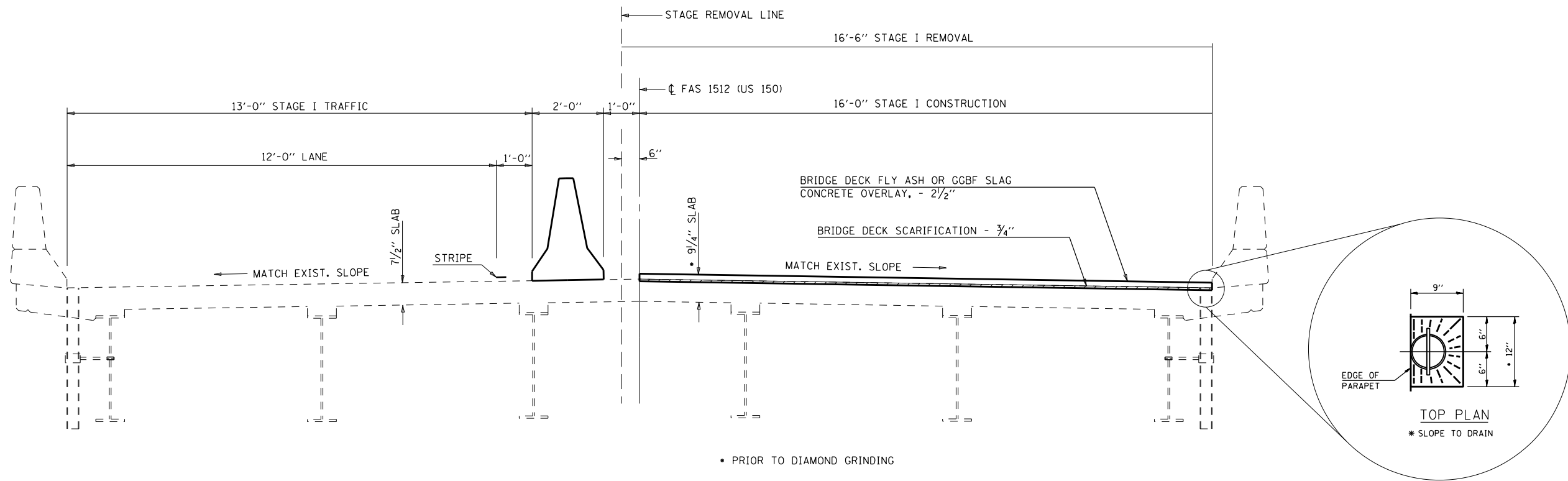
**STATE OF ILLINOIS
DEPARTMENT OF TRANSPORTATION**

**TYPICAL CROSS-SECTION
S.N. 010-0039**

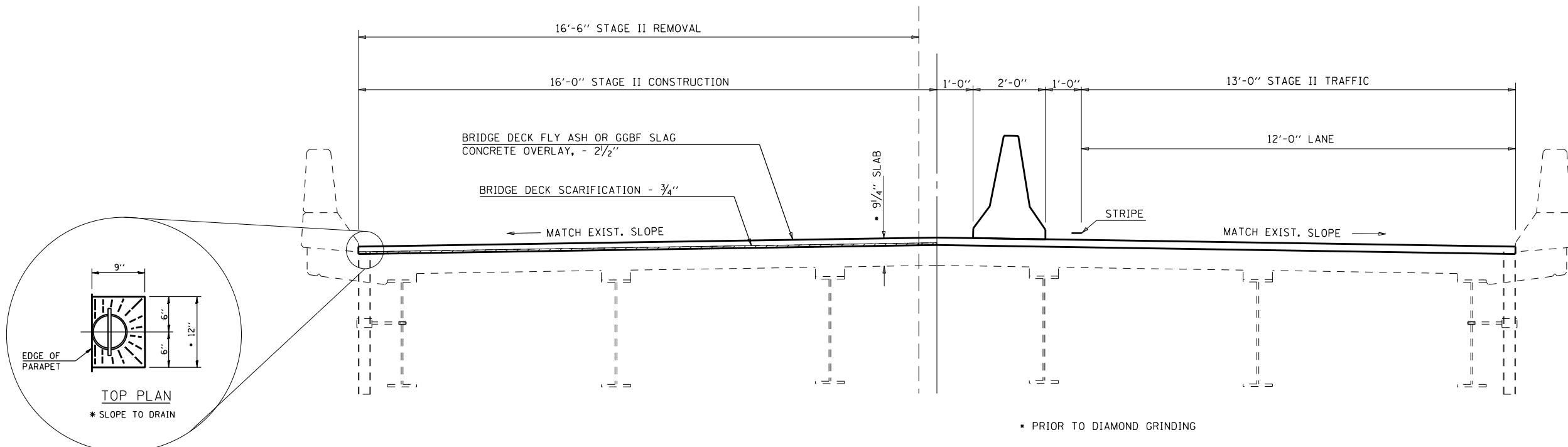
SCALE: NONE SHEET 1 OF 1 SHEETS STA. TO STA.

F.A.S. RTE.	SECTION	COUNTY	TOTAL SHEETS	SHEET NO.
1512	2X-BDR	CHAMPAIGN	23	5
CONTRACT NO. 70B79				
ILLINOIS FED. AID PROJECT				

STAGE I CONSTRUCTION DETAIL (LOOKING EAST)



STAGE II CONSTRUCTION DETAIL (LOOKING EAST)



MODEL: \\MODELS\MAME\...
 FILE: \\MODELS\MAME\...

USER NAME = Jeff.Sherer	DESIGNED - JMS	REVISED -
DRAWN - JMS	REVISIONS -	
PLOT SCALE = 40.0000' / in.	CHECKED -	REVISED -
PLOT DATE = 12/6/2022	DATE - 052020	REVISED -

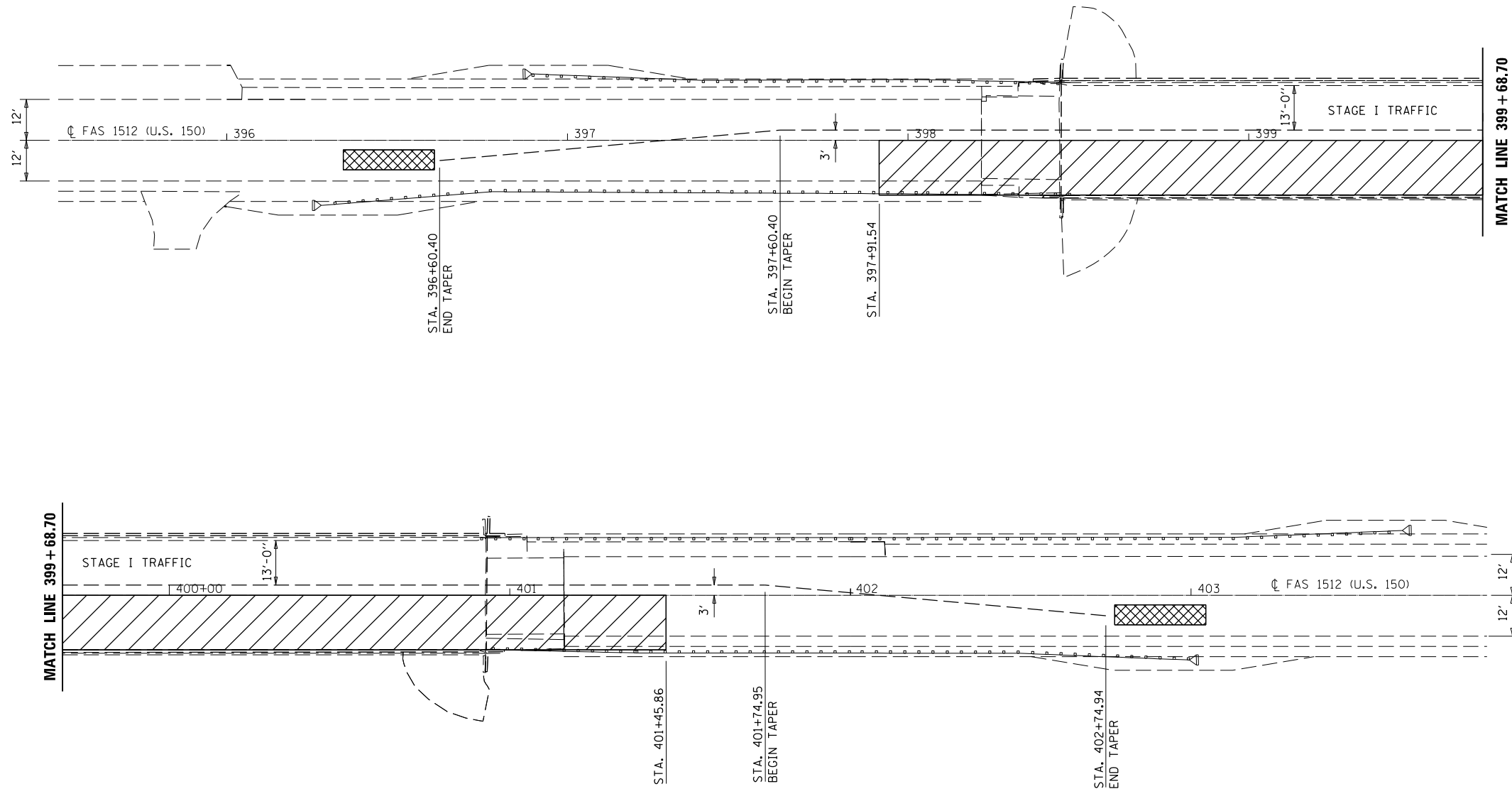
**STATE OF ILLINOIS
DEPARTMENT OF TRANSPORTATION**

**STAGE CONSTRUCTION DETAIL
S.N. 010-0039**

SCALE: NONE SHEET 1 OF 3 SHEETS STA. TO STA.

F.A.S. RTE.	SECTION	COUNTY	TOTAL SHEETS	SHEET NO.
1512	2X-BDR	CHAMPAIGN	23	6
CONTRACT NO. 70B79				
ILLINOIS FED. AID PROJECT				

STAGE I TEMPORARY CONCRETE BARRIER LAYOUT



MATCH LINE 399 + 68.70

MATCH LINE 399 + 68.70

- TEMPORARY CONCRETE BARRIER
- PROPOSED WORK AREA
- IMPACT ATTENUATOR

PLAN NOTES:

ALL STAGING DETAILS SHALL BE IN ACCORDANCE WITH TRAFFIC CONTROL AND PROTECTION STANDARD 701321 AND PAID FOR AT THE CONTRACT UNIT PRICE PER EACH LOCATION.

ALL WORK WITHOUT TEMPORARY CONCRETE BARRIER IN PLACE SHALL BE IN ACCORDANCE WITH TRAFFIC CONTROL AND PROTECTION STANDARDS 701201, 701301 AND 701311.

FOR ADDITIONAL DETAILS ASSOCIATED WITH TEMPORARY CONCRETE BARRIER, SEE HIGHWAY STANDARD 704001.

EXISTING OR TEMPORARY PAVEMENT MARKINGS SHALL BE ON BOTH SIDES OF THE OPEN LANE FROM STOP BAR TO STOP BAR. PAVEMENT MARKINGS THAT CONFLICT WITH STAGED TRAFFIC MARKINGS SHALL BE REMOVED. THIS WORK SHALL BE INCLUDED IN THE COST FOR TRAFFIC CONTROL AND PROTECTION STANDARD 701321.

REFLECTORS SHALL BE ATTACHED TO GUARDRAIL AND BARRIER WALL AT 25 FOOT CENTERS. COST INCLUDED WITH TRAFFIC CONTROL AND PROTECTION STANDARD 701321.

70400100 TEMPORARY CONCRETE BARRIER

	STATION	TO	STATION	LENGTH
TAPER RT	396+62.45		397+62.45	100.0
	397+62.45		401+74.95	412.5
TAPER RT	401+74.95		402+74.94	100.0
SUB-TOTAL =				612.5

BILL OF MATERIALS

ITEM	UNIT	TOTAL
TEMPORARY CONCRETE BARRIER	FOOT	612.5
IMPACT ATTENUATOR TEMPORARY (NON-REDIRECTIVE) TEST LEVEL 3	EACH	2.0

MODEL: \\MODELS\MAME\FILE: \\mame\pub\lib\c-22\benitez.com\PHWDOT\Documents\DOT Offices\Bridges\Projects\0570879\CADD\Structures\70879-2-11-StructurePlans.dgn

USER NAME = Jeff.Sherer	DESIGNED - JMS	REVISED -
PLOT SCALE = 40,0000 ' / in.	DRAWN - JMS	REVISED -
PLOT DATE = 12/6/2022	CHECKED -	REVISED -
	DATE - 052020	REVISED -

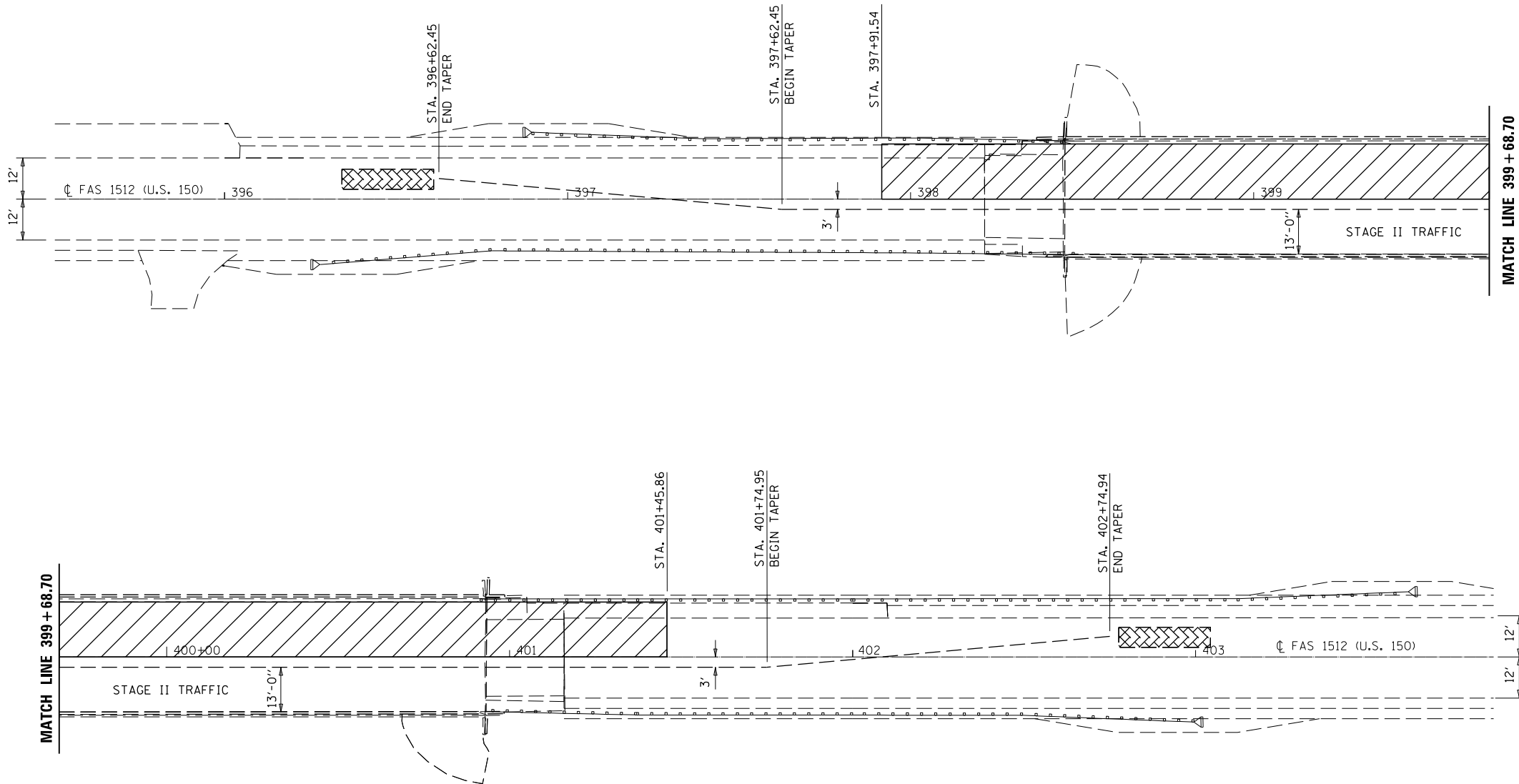
**STATE OF ILLINOIS
DEPARTMENT OF TRANSPORTATION**

**TEMPORARY CONCRETE BARRIER LAYOUT
S.N. 010-0039**

SCALE: 1" = 20' SHEET 2 OF 3 SHEETS STA. TO STA.

F.A.S. RTE.	SECTION	COUNTY	TOTAL SHEETS	SHEET NO.
1512	2X-BDR	CHAMPAIGN	23	7
			CONTRACT NO. 70B79	
ILLINOIS FED. AID PROJECT				

STAGE II TEMPORARY CONCRETE BARRIER LAYOUT



- TEMPORARY CONCRETE BARRIER
- PROPOSED WORK AREA
- IMPACT ATTENUATOR

PLAN NOTES:

ALL STAGING DETAILS SHALL BE IN ACCORDANCE WITH TRAFFIC CONTROL AND PROTECTION STANDARD 701321 AND PAID FOR AT THE CONTRACT UNIT PRICE PER EACH LOCATION.

ALL WORK WITHOUT TEMPORARY CONCRETE BARRIER IN PLACE SHALL BE IN ACCORDANCE WITH TRAFFIC CONTROL AND PROTECTION STANDARDS 701201, 701301 AND 701311.

FOR ADDITIONAL DETAILS ASSOCIATED WITH TEMPORARY CONCRETE BARRIER, SEE HIGHWAY STANDARD 704001.

EXISTING OR TEMPORARY PAVEMENT MARKINGS SHALL BE ON BOTH SIDES OF THE OPEN LANE FROM STOP BAR TO STOP BAR. PAVEMENT MARKINGS THAT CONFLICT WITH STAGED TRAFFIC MARKINGS SHALL BE REMOVED. THIS WORK SHALL BE INCLUDED IN THE COST FOR TRAFFIC CONTROL AND PROTECTION STANDARD 701321.

REFLECTORS SHALL BE ATTACHED TO GUARDRAIL AND BARRIER WALL AT 25 FOOT CENTERS. COST INCLUDED WITH TRAFFIC CONTROL AND PROTECTION STANDARD 701321.

70400200 RELOCATE TEMPORARY CONCRETE BARRIER

	STATION	TO	STATION	LENGTH
TAPER LT	396+62.45		LT 397+62.45	100.0
	LT 397+62.45		LT 401+74.95	412.5
TAPER LT	401+74.95		LT 402+74.94	100.0
SUB-TOTAL =				612.5

BILL OF MATERIALS

ITEM	UNIT	TOTAL
REL TEMPORARY CONCRETE BARRIER	FOOT	612.5
IMPACT ATTENUATOR RELOCATE (NON-REDIRECTIVE) TEST LEVEL 3	EACH	2.0

MODEL: \\MODELS\MAME\FILE: \\MODELS\MAME\Public\2022\70B79\CD\Drawings\Structures\70B79-2-StructuresPlan.dgn

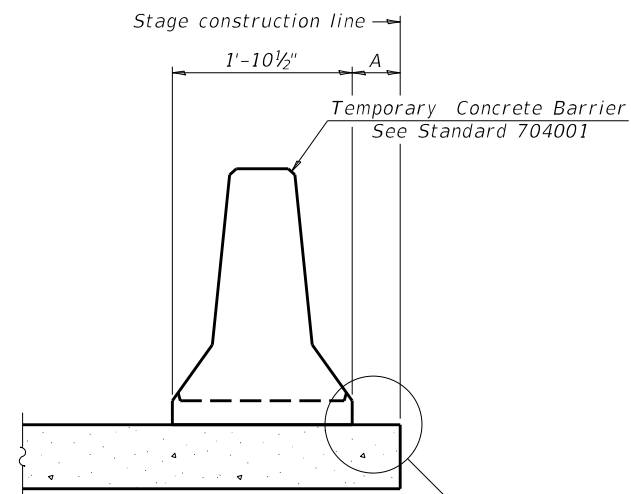
USER NAME = Jeff.Sherer	DESIGNED - JMS	REVISED -
	DRAWN - JMS	REVISED -
PLOT SCALE = 40,0000 ' / in.	CHECKED -	REVISED -
PLOT DATE = 12/6/2022	DATE - 052020	REVISED -

**STATE OF ILLINOIS
DEPARTMENT OF TRANSPORTATION**

**TEMPORARY CONCRETE BARRIER LAYOUT
S.N. 010-0039**

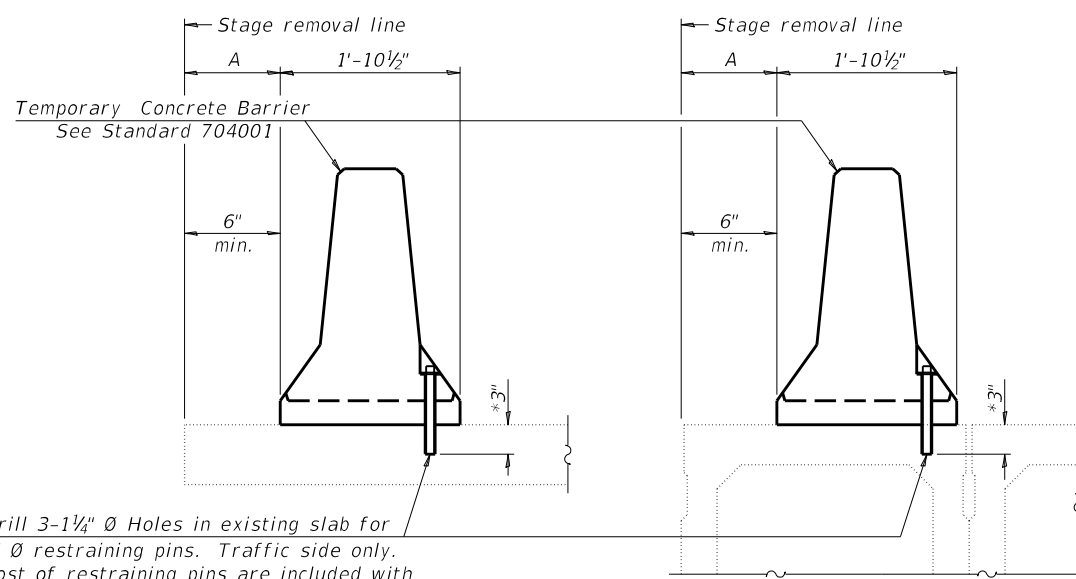
SCALE: 1" = 20' SHEET 3 OF 3 SHEETS STA. TO STA.

F.A.S. RTE.	SECTION	COUNTY	TOTAL SHEETS	SHEET NO.
1512	2X-BDR	CHAMPAIGN	23	8
				CONTRACT NO. 70B79
ILLINOIS FED. AID PROJECT				



When "A" is 3'-1" or less, the temporary concrete barrier shall be restrained to the new slab according to Detail I, II or III. No restraint is required when "A" is greater than 3'-1".

NEW SLAB OR NEW DECK BEAM

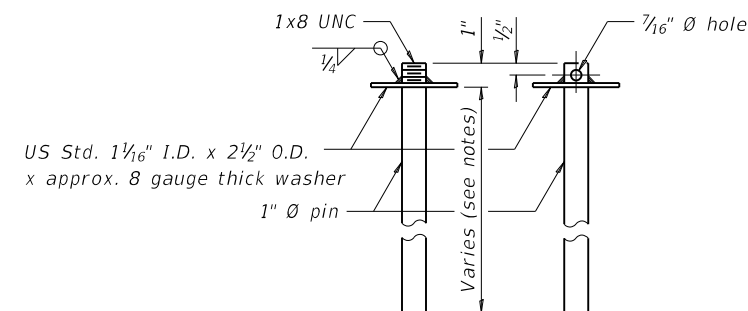


Drill 3-1/4" Ø Holes in existing slab for 1" Ø restraining pins. Traffic side only. Cost of restraining pins are included with Temporary Concrete Barrier. No restraint is required when "A" is greater than 3'-1".

EXISTING SLAB

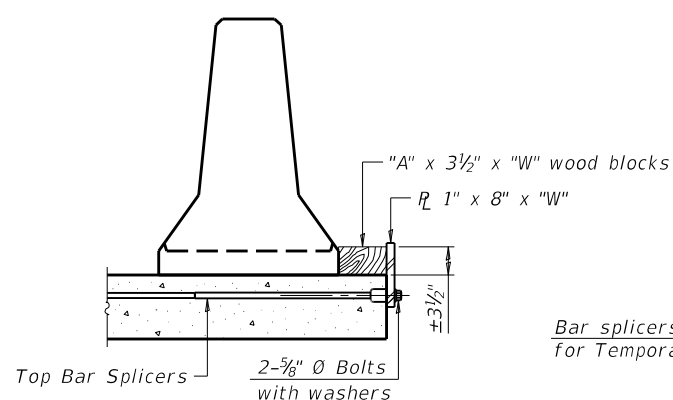
EXISTING DECK BEAM

SECTIONS THRU SLAB OR DECK BEAM

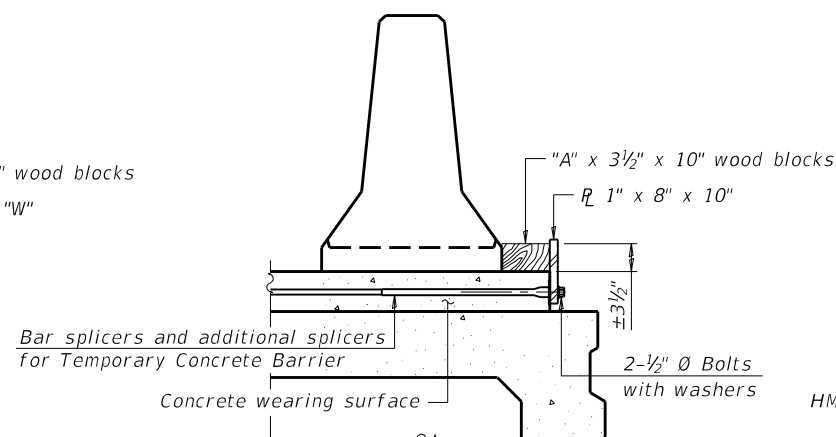


RESTRAINING PIN

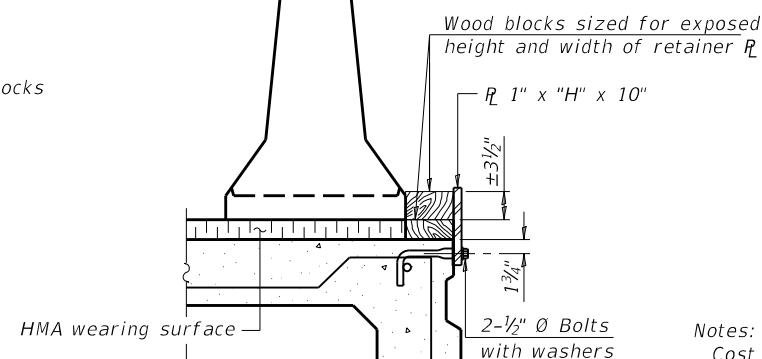
* When hot-mix asphalt wearing surface is present, embedment shall be 3" plus the wearing surface depth.



DETAIL I



DETAIL II

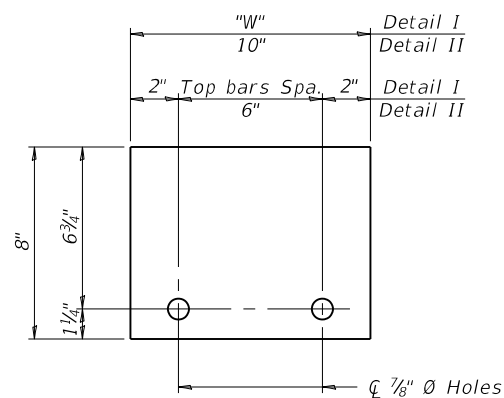


DETAIL III

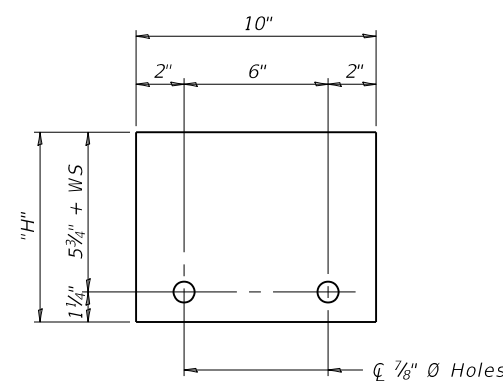
BAR SPLICER FOR #4 BAR - DETAIL III

Notes:
 Cost of retainer assembly is included with Temporary Concrete Barrier. A retainer assembly shall be located at the approximate $\frac{1}{2}$ of each temporary concrete barrier.
 The retainer plate shall not be removed until the concrete on the adjacent stage is ready to be poured. For Detail III applications the retainer plate shall not be removed until just prior to placing the adjacent beam.
 When the 'A' dimension is less than 1 1/2', the wood block shall be omitted and the barrier shall be placed in direct contact with the steel retainer plate. For deck beam applications the minimum required 'A' distance is 6" to accommodate the shear key clamping device.

Detail I - Installation for a new bridge deck or bridge slab.
 Detail II - Installation for a new deck beam with an initial concrete wearing surface. Additional bar splicers shall be provided at 6'-0" centers and paired with the bar splicers of the concrete wearing surface reinforcement to accommodate the installation of the retainer assemblies. The cost of the additional bar splicers is included with the concrete wearing surface.
 Detail III - Installation for a new deck beam with no initial wearing surface or with an initial hot-mix asphalt (HMA) wearing surface present. The deck beam directly beneath the temporary concrete barrier shall be fabricated with bar splicer inserts in the side of the beam, as detailed, to accommodate the installation of the retainer assemblies. A pair of bar splicers, 6" apart, shall be placed at 6'-0" centers along the length of the beam. The cost of the bar splicers is included with the deck beam.



STEEL RETAINER R 1" x 8" x "W"
(Detail I and II)



STEEL RETAINER R 1" x "H" x 10"
(Detail III)

RAILING CRITERIA

NCHRP 350 Test Level	3
Railing Weight (pcf)	440

R-27

10-12-2021

Structure Number 010-0039 was built in 1939, SBI-10, Section 2X-B at Station 165+23.00 by the State of Illinois in Champaign County. The Structure was reconstructed in 1990, FAS 1512 Contract No. 90053, Section 2X-BR at Station 399+68.72. The structure is a three (3) span 7 1/2" thick reinforced concrete deck, steel continuous stringer/multi-beam girder bridge on concrete spread footing supported abutments and piers.

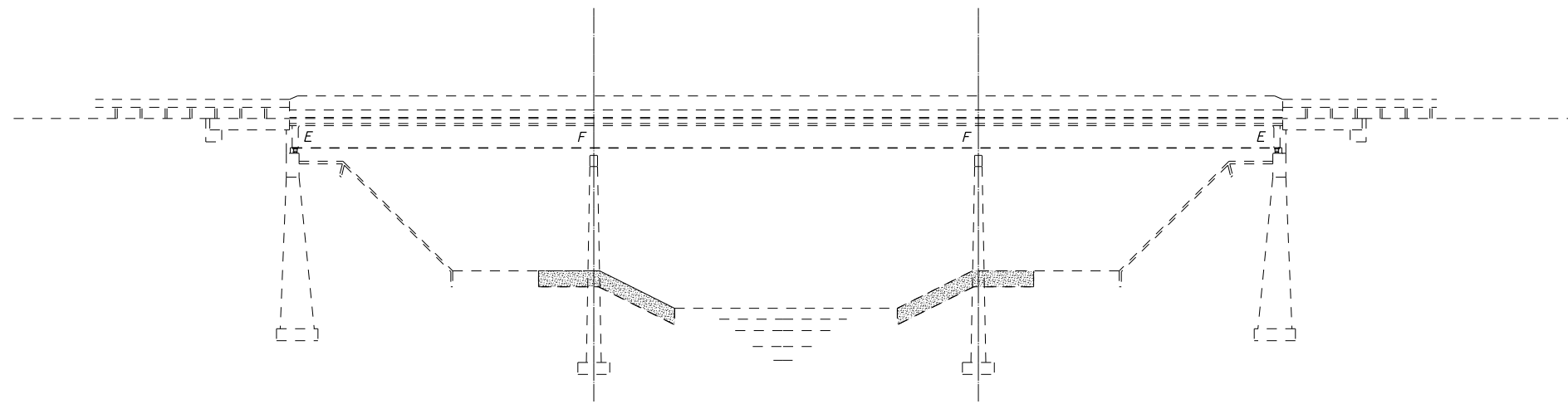
The existing structure has a back-to-back abutment length of 251'-0", and out-to-out width of 35'-2", clear width of 32'-0", and an approach roadway width of 30'-0".

PROPOSED WORK

1. Perform Bridge Deck Scarification 3/4"
2. Perform Structural Repair of Concrete to select locations
3. Perform Deck Slab Repair to existing deck
4. Perform Concrete Removal at Approach Pavements
5. Place Class D Patch at Approach Pavements
6. Perform HMA Surface Removal-Butt Joint
7. Place Bridge Deck Latex Concrete

INDEX OF SHEETS

1. General Plan and Elevation
- 2.-4. Detail of Deck Patching
5. Wearing Surface Plan
- 6.-8. Approach Pavement Detail
9. Detail of Structural Repair of Concrete > = 5"



ELEVATION



GENERAL NOTES

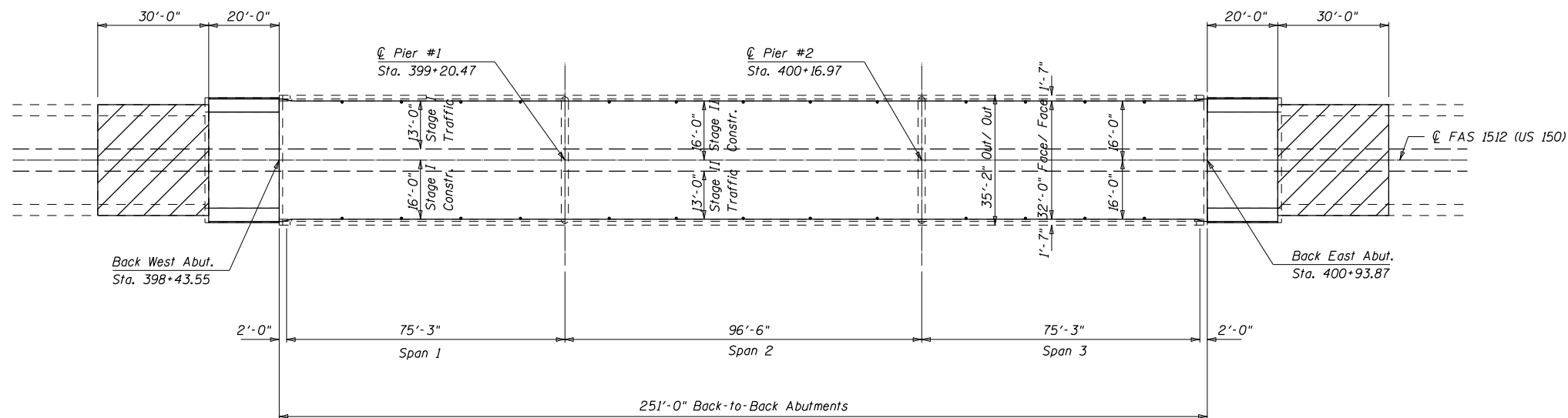
Plan dimensions and details relative to existing plans are subject to nominal construction variations. The contractor shall field verify existing dimensions and details affecting new construction and make necessary approved adjustments prior to construction or ordering of materials. Such variations shall not be cause for additional compensation for a change in scope of work, however the contractor will be paid for the quantity actually furnished at the unit price bid for the work.

Existing reinforcement bars extending into the removal area shall be cleaned, straightened and incorporated into the new construction, cost included with Deck Slab Repair.

Areas of repairs shown are estimated. The Engineer shall show actual locations of the repairs on AS-BUILT PLANS.

Synthetic Fibers shall be included in the bridge deck concrete overlay specified. See Special Provisions.

Protective coat shall be applied to all new concrete superstructure and all new concrete overlays as specified in Article 503.19 of the Standard Specifications.



PLAN

TOTAL BILL OF MATERIAL

ITEM	UNIT	TOTAL
Concrete Removal	Cu. Yd.	2.1
Protective Coat	Sq. Yd.	1,026.0
Reinforcement Bars, Epoxy Coated	Pound	110.0
P.C. Conc. Bridge Approach Pvt. (Spl.)	Sq. Yd.	40.0
Bridge Deck Grooving (Longitudinal)	Sq. Yd.	993.0
Bridge Approach Shoulder Removal	Sq. Yd.	27.0
Bridge Deck Fly Ash or GGBF Slag Concrete Overlay, 2 1/2"	Sq. Yd.	1,026.0
Bridge Deck Scarification 3/4"	Sq. Yd.	1,026.0
Structural Repair of Conc. Dpth. =< 5"	Sq. Ft.	27.0
Deck Slab Repair (Full Depth, Type I)	Sq. Yd.	1.0
Deck Slab Repair (Full Depth, Type II)	Sq. Yd.	23.0
Diamond Grinding (Bridge Section)	Sq. Yd.	895.0



EXPIRES 11/30/2024

Jayme F. Schiff

MODEL: \\MODELMAME\...
 FILE: \\MODELMAME\...
 PROJECT: \\MODELMAME\...

USER NAME = Jeff.Sherer	DESIGNED - JMS	REVISED -
PLOT SCALE = 40,0000' / in.	DRAWN - JMS	REVISED -
PLOT DATE = 12/6/2022	CHECKED -	REVISED -
	DATE - 05/2020	REVISED -

**STATE OF ILLINOIS
DEPARTMENT OF TRANSPORTATION**

**GENERAL PLAN AND ELEVATION
S.N. 010-0039**

SCALE: 1" = 20' SHEET 1 OF 9 SHEETS STA. TO STA.

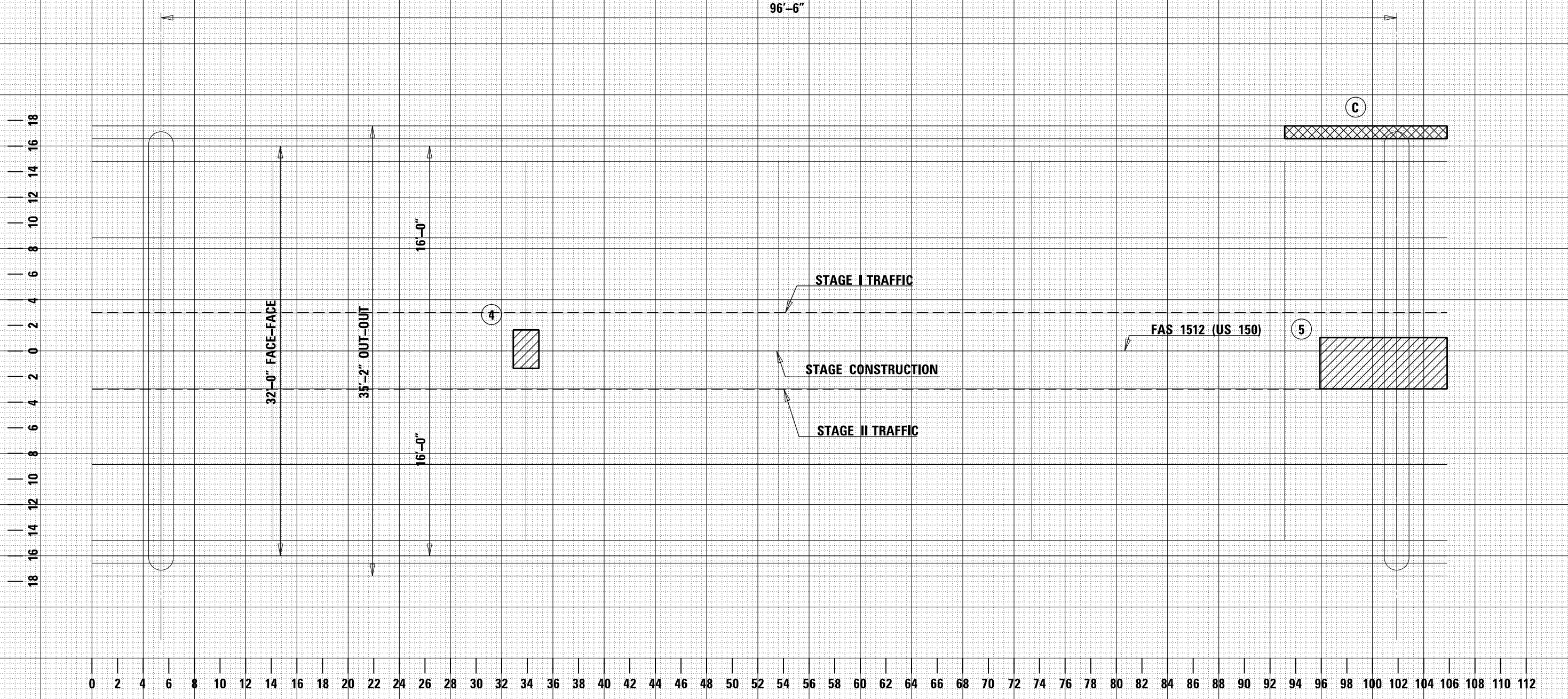
F.A.S. RTE.	SECTION	COUNTY	TOTAL SHEETS	SHEET NO.
1512	2X-BDR	CHAMPAIGN	23	10
			CONTRACT NO. 70B79	
			ILLINOIS FED. AID PROJECT	

S.N. 010-0039 SPAN 2

FINAL SURVEY NO.	SURVEYED PLOTTED	DATE
NOTE BOOK	TEMPLATE	
	AREAS CHECKED	

ORIGINAL SURVEY NO.	SURVEYED PLOTTED	DATE
	TEMPLATE	
	AREAS CHECKED	

MODEL: SHODEL\MAMES
FILE NAME: p:\a\100-39\mames\100-39\CADD\Bids\Structures\70879\Sub-StructurePlans.dgn



USER NAME = Jeff.Sherer	DESIGNED -	REVISED -
	DRAWN -	REVISED -
PLOT SCALE = 40,0000 ' / in.	CHECKED -	REVISED -
PLOT DATE = 12/6/2022	DATE -	REVISED -

STATE OF ILLINOIS
DEPARTMENT OF TRANSPORTATION

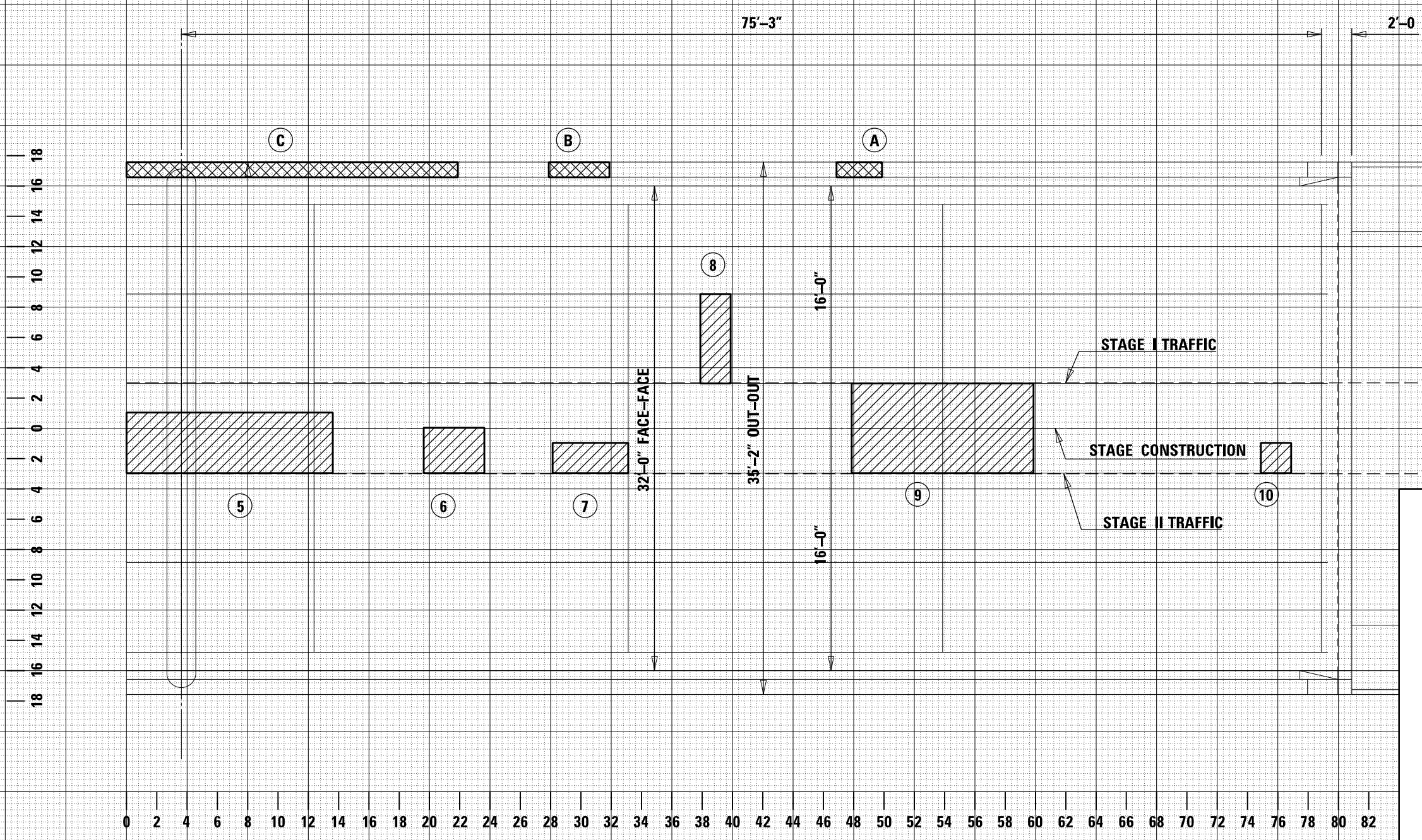
DETAIL OF DECK PATCHING		
S.N. 010-0039		
SCALE: 1' = 5'	SHEET 3 OF 9 SHEETS	STA. TO STA.

F.A.S. RTE.	SECTION	COUNTY	TOTAL SHEETS	SHEET NO.
1512	2X-BDR	CHAMPAIGN	23	12
CONTRACT NO. 70B79				
ILLINOIS FED. AID PROJECT				

S.N. 010-0039 SPAN 3

DATE	
BY	
SURVEYED	
PLOTTED	
TEMPLATE	
AREAS CHECKED	
NO.	

DATE	
BY	
SURVEYED	
PLOTTED	
TEMPLATE	
AREAS CHECKED	
NO.	



PATCH NO.	SIZE		DECK SLAB REPAIR (FULL DEPTH T1) SQ YD	DECK SLAB REPAIR (FULL DEPTH T2) SQ YD
	LENGTH (FT)	WIDTH (FT)		
1	2	2	0.4	
2	4	3		1.3
3	8	2		1.8
4	2	3		0.7
5	16	4		7.1
6	4	3		1.3
7	5	2		1.1
8	2	5.9		1.3
9	12	5.9		7.9
10	2	2	0.4	

TOTAL QTY = 0.9 22.5
 USE = 1.0 23.0

NOTES:
 AREA OF DECK SLAB REPAIR HAVE BEEN ESTIMATED FROM MAR. 2021 DECK SURVEY. THE ACTUAL QUANTITY AND LOCATIONS SHALL BE DETERMINED BY THE ENGINEER. THE ENGINEER SHALL SHOW THE ACTUAL LOCATIONS OF THE DECK SLAB REPAIRS ON DECK PATCHING DETAIL SHEETS.

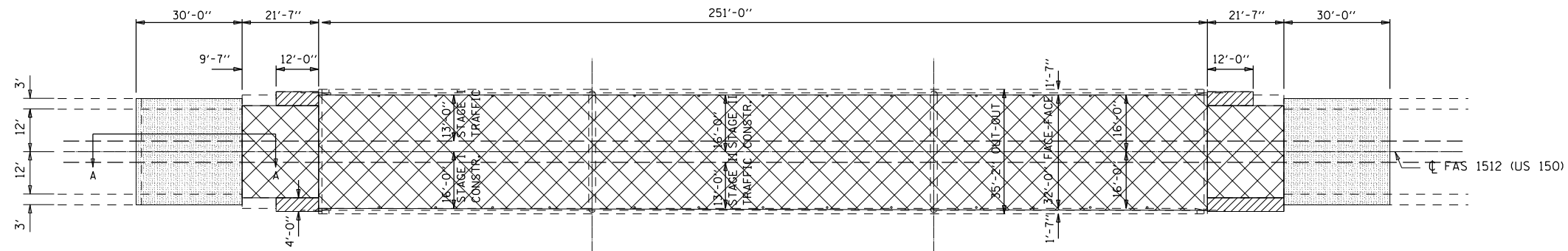
USER NAME = Jeff.Sherer	DESIGNED -	REVISED -
PLOT SCALE = 40,0000 ' / in.	DRAWN -	REVISED -
PLOT DATE = 12/6/2022	CHECKED -	REVISED -
	DATE -	REVISED -

**STATE OF ILLINOIS
 DEPARTMENT OF TRANSPORTATION**

**DETAIL OF DECK PATCHING
 S.N. 010-0039**
 SCALE: 1' = 5 SHEET 4 OF 9 SHEETS STA. TO STA.

F.A.S. RTE.	SECTION	COUNTY	TOTAL SHEETS	SHEET NO.
1512	2X-BDR	CHAMPAIGN	23	13
CONTRACT NO. 70B79				
ILLINOIS FED. AID PROJECT				

PLAN OF REMOVAL



SEE BRIDGE APPROACH SHOULDER REMOVAL DETAIL SHEET 6 OF 9

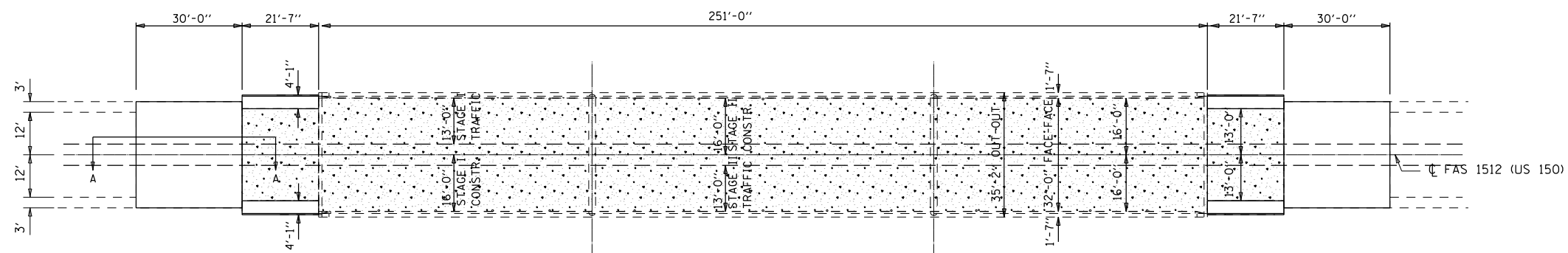
SEE APPROACH PAVEMENT DETAIL SHEET 8 OF 9

- BRIDGE DECK SCARIFICATION - 3/4"
- BRIDGE APPROACH SHOULDER REMOVAL
- HOT-MIX SURFACE REMOVAL-BUTT JOINT

BILL OF MATERIALS

ITEM	UNIT	TOTAL
BRIDGE DECK SCARIFICATION - 3/4"	SQ YD	1,026.0
HMA SURFACE REMOVAL-BUTT JOINT	SQ YD	200.0
CLASS D PATCH TYPE IV 13"	SQ YD	27.0
BRIDGE APPROACH SHOULDER REMOVAL	SQ YD	27.0

PLAN OF PROPOSED WEARING SURFACE



SEE PC CONC BRIDGE APPR PVT (SPL) DETAIL SHEET 7 OF 9

SEE APPROACH PAVEMENT DETAIL SHEET 8 OF 9

- BRIDGE DECK FLY ASH OR GGBF SLAG CONCRETE OVERLAY, 2 1/2"

BILL OF MATERIALS

ITEM	UNIT	TOTAL
HMA SURF COURSE, IL 9.5 MIX "D" N50	TON	17.0
BRIDGE DECK FLY ASH OR GGBF SLAG CONCRETE OVERLAY, 2 1/2"	SQ YD	1,026.0
BRIDGE DECK GROOVING (LONGITUDINAL)	SQ YD	993.0
PC CONC BRIDGE APPR SHLD PVT (SPL)	SQ YD	40.0
DIAMOND GRINDING (BRIDGE SECTION)	SQ YD	895.0

STATE OF ILLINOIS
DEPARTMENT OF TRANSPORTATION

WEARING SURFACE PLAN
S.N. 010-0039

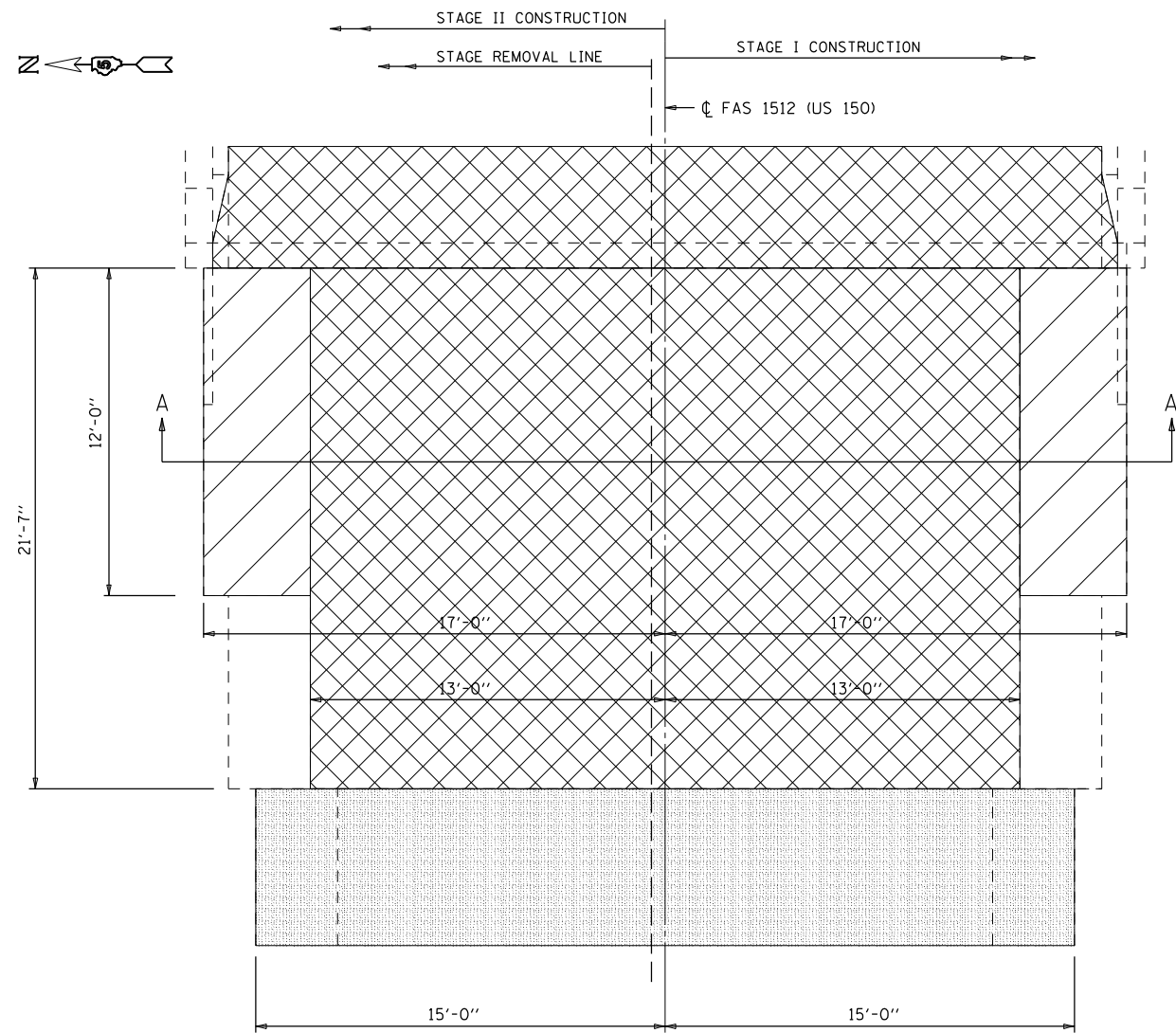
SCALE: 1" = 20' SHEET 5 OF 9 SHEETS STA. TO STA.

F.A.S. RTE.	SECTION	COUNTY	TOTAL SHEETS	SHEET NO.
1512	2X-BDR	CHAMPAIGN	23	14

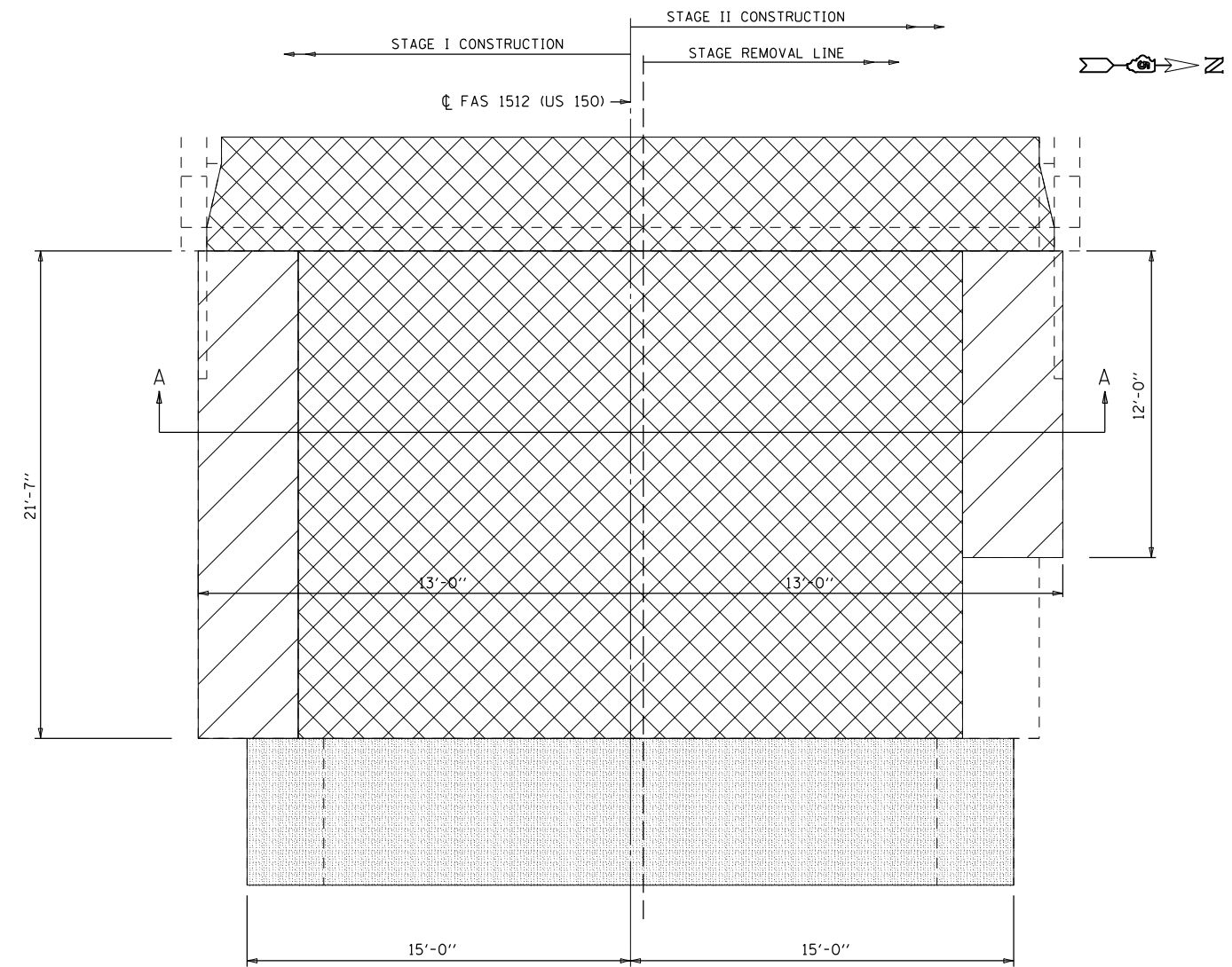
CONTRACT NO. 70B79

ILLINOIS FED. AID PROJECT

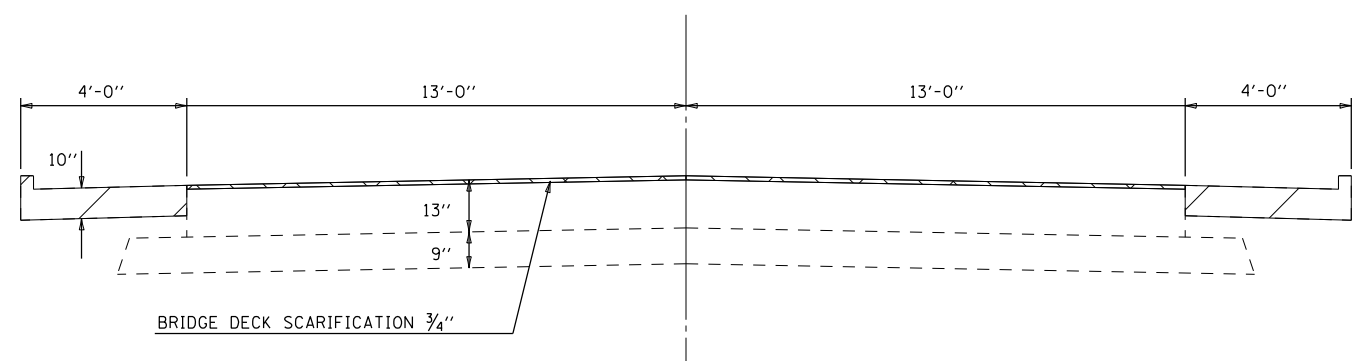
USER NAME = Jeff.Sherer	DESIGNED - JMS	REVISED -
PLOT SCALE = 40,0000 ' / in.	DRAWN - JMS	REVISED -
PLOT DATE = 12/6/2022	CHECKED -	REVISED -
	DATE - 052020	REVISED -



**PLAN OF REMOVAL AT SHOULDERS
WEST APPROACH**



**PLAN OF REMOVAL AT SHOULDERS
EAST APPROACH**



SECTION A-A BRIDGE APPROACH SHOULDERS

- BRIDGE DECK HYDROSCARIFICATION 3/4"
- BRIDGE APPROACH SHOULDER REMOVAL
- HMA SURFACE REMOVAL BUTT-JOINT

NOTES:
SEE WEARING SURFACE PLANS FOR ADDITIONAL DETAILS.

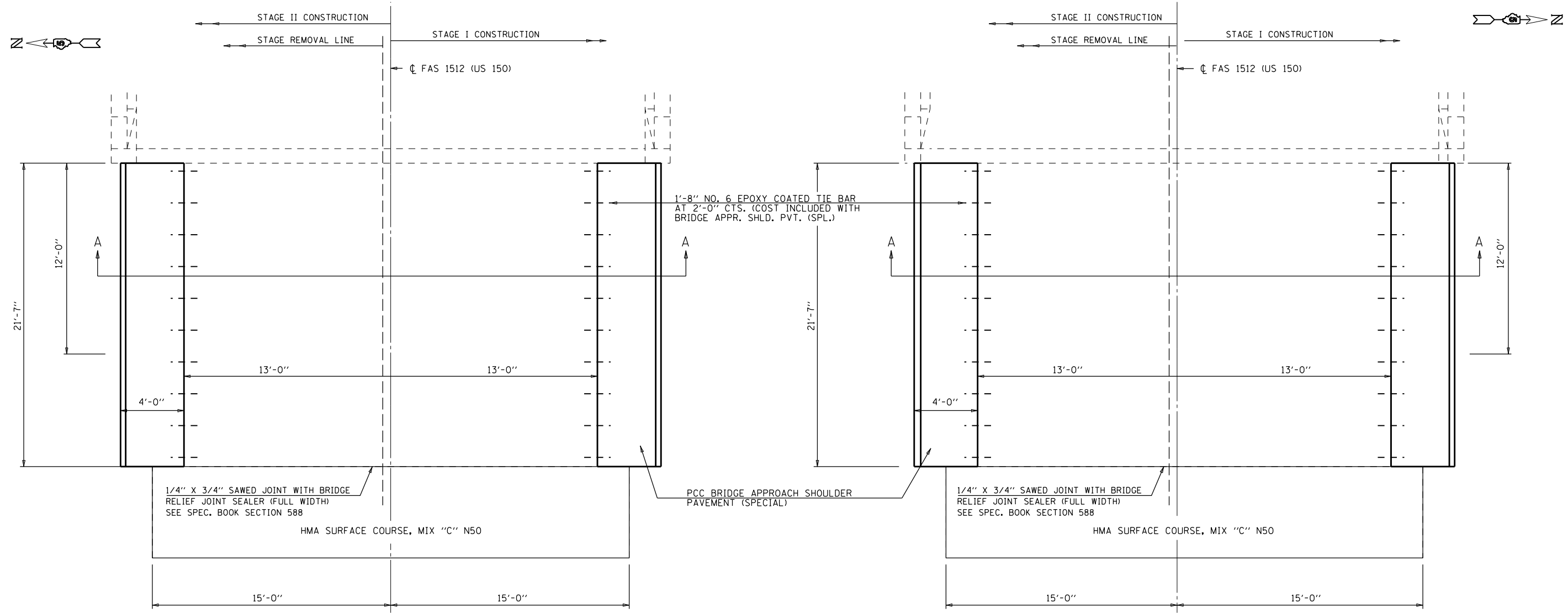
MODEL: \\MODELS\MAME\...
FILE: \\MODELS\MAME\...
PROJECT: \\PROJECTS\05708792\CADD\Structures\708792\24-H-StructurePlans.dgn

USER NAME = Jeff.Sherer	DESIGNED - JMS	REVISED -
DRAWN - JMS	REVISIONS -	
PLOT SCALE = 40.0000 ' / in.	CHECKED -	REVISED -
PLOT DATE = 12/6/2022	DATE - 052020	REVISED -

**STATE OF ILLINOIS
DEPARTMENT OF TRANSPORTATION**

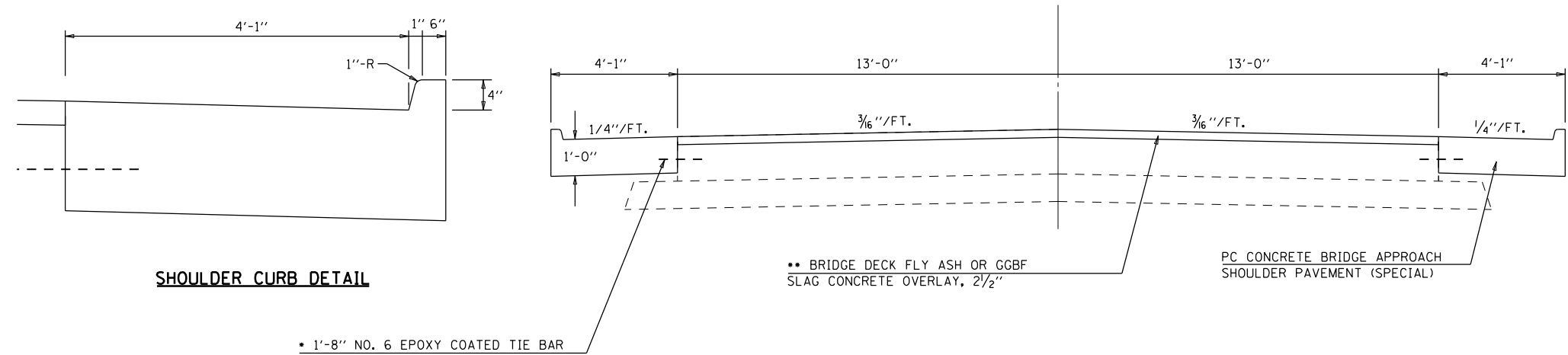
BRIDGE APPROACH SHOULDER REMOVAL DETAIL
S.N. 010-0039
SCALE: 1" = 20' SHEET 6 OF 9 SHEETS STA. TO STA.

F.A.S. RTE.	SECTION	COUNTY	TOTAL SHEETS	SHEET NO.
1512	2X-BDR	CHAMPAIGN	23	15
CONTRACT NO. 70B79			ILLINOIS FED. AID PROJECT	



**PLAN OF CONSTRUCTION AT SHOULDERS
WEST APPROACH**

**PLAN OF CONSTRUCTION AT SHOULDERS
EAST APPROACH**



SHOULDER CURB DETAIL

SECTION A-A BRIDGE APPROACH SHOULDERS

- NOTES:**
- THE COST OF EPOXY GROUTING BARS SHALL BE INCLUDED WITH REINFORCEMENT BARS (EPOXY COATED).
 - REINFORCEMENT BARS DESIGNATED (E) SHALL BE EPOXY COATED.
 - COST OF SAWED JOINT AND BRIDGE RELIEF JOINT SEALER INCLUDED WITH BRIDGE DECK FLY ASH OR GGBF SLAG CONCRETE OVERLAY, 2 1/2".
 - SEE STANDARDS 610001-09 AND 631031-18 FOR DETAILS OF CURB PLACEMENT.
 - SEE WEARING SURFACE PLANS FOR ADDITIONAL DETAILS.

BILL OF MATERIAL

Item	Unit	Total
Reinforcement Bars, Epoxy Coated	Pound	110.0

- EPOXY GROUT BARS 9" MIN. HOLES ACCORDING TO ARTICLE 584 OF THE STANDARD SPECIFICATIONS.
- PRIOR TO DIAMOND GRINDING

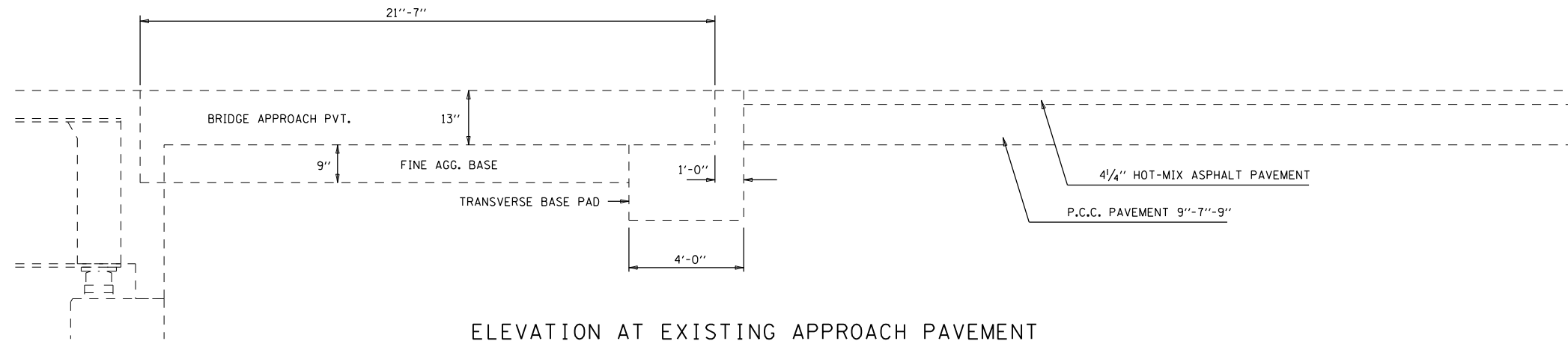
USER NAME = Jeff.Sherer	DESIGNED - JMS	REVISED -
PLOT SCALE = 40.0000 ' / in.	DRAWN - JMS	REVISED -
PLOT DATE = 12/6/2022	CHECKED -	REVISED -
	DATE - 052020	REVISED -

**STATE OF ILLINOIS
DEPARTMENT OF TRANSPORTATION**

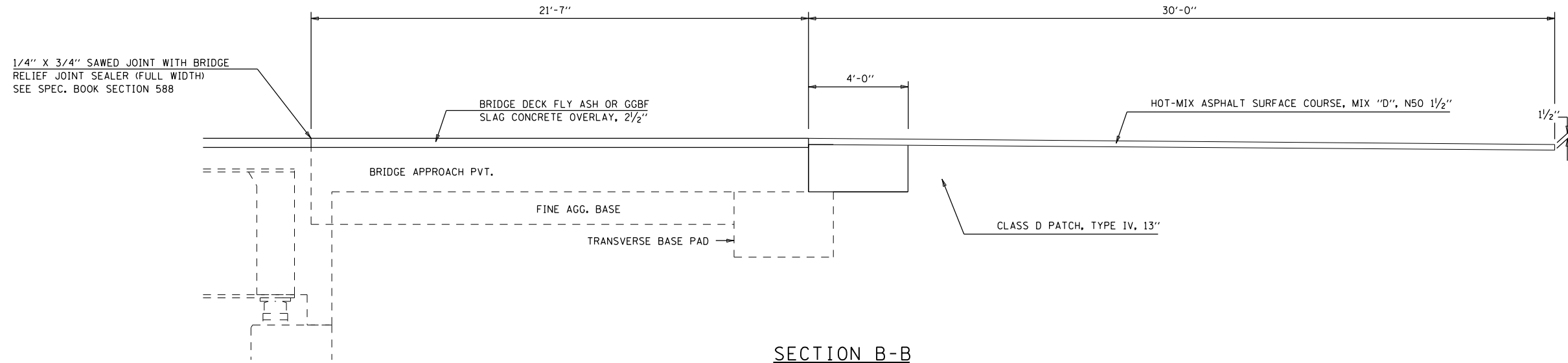
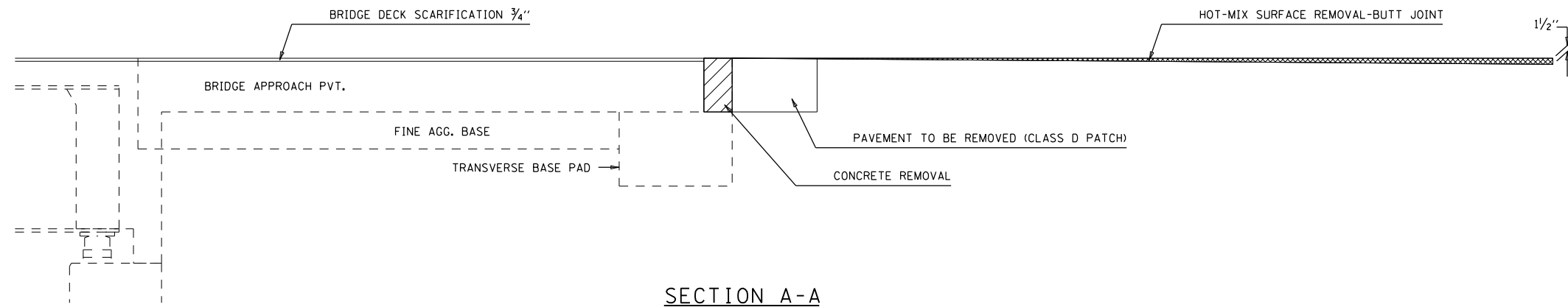
P.C. CONCRETE BRIDGE APPROACH SHOULDER (SPECIAL) DETAIL
S.N. 010-0039
SCALE: 1" = 20' SHEET 7 OF 9 SHEETS STA. TO STA.

F.A.S. RTE.	SECTION	COUNTY	TOTAL SHEETS	SHEET NO.
1512	2X-BDR	CHAMPAIGN	23	16
			CONTRACT NO. 70B79	
ILLINOIS FED. AID PROJECT				

MODEL: \\MODELS\MAME\... PROJECTS\0570879\CADD\Drawings\Structures\70B79-2-11-StructurePlans.dgn



ELEVATION AT EXISTING APPROACH PAVEMENT
(EAST APPROACH PAVEMENT SHOWN, WEST APPROACH SIMILAR)



MODEL: \\MODELM\AMF5
 FILE: \\MODELM\Public\zshenley.com\PHWDOT\Documents\DOT Offices\Burlington\Projects\0570879\0570879\0570879-2\Struct\Plan\Plan.dgn

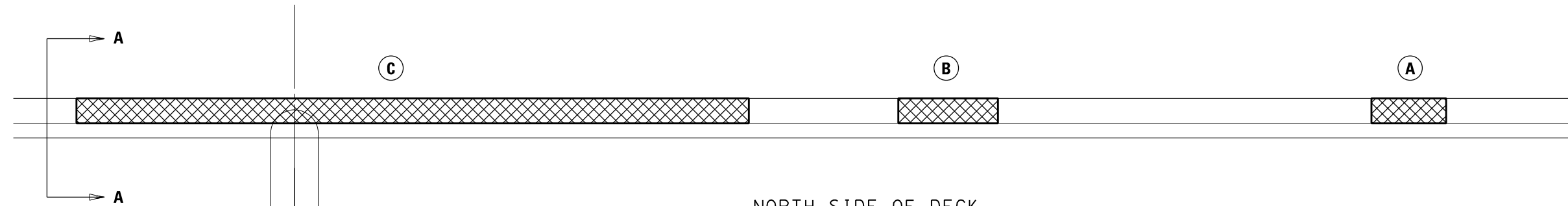
USER NAME = Jeff.Sherer	DESIGNED - JMS	REVISED -
	DRAWN - JMS	REVISED -
PLOT SCALE = 40.0000 ' / in.	CHECKED -	REVISED -
PLOT DATE = 12/6/2022	DATE - 052020	REVISED -

**STATE OF ILLINOIS
DEPARTMENT OF TRANSPORTATION**

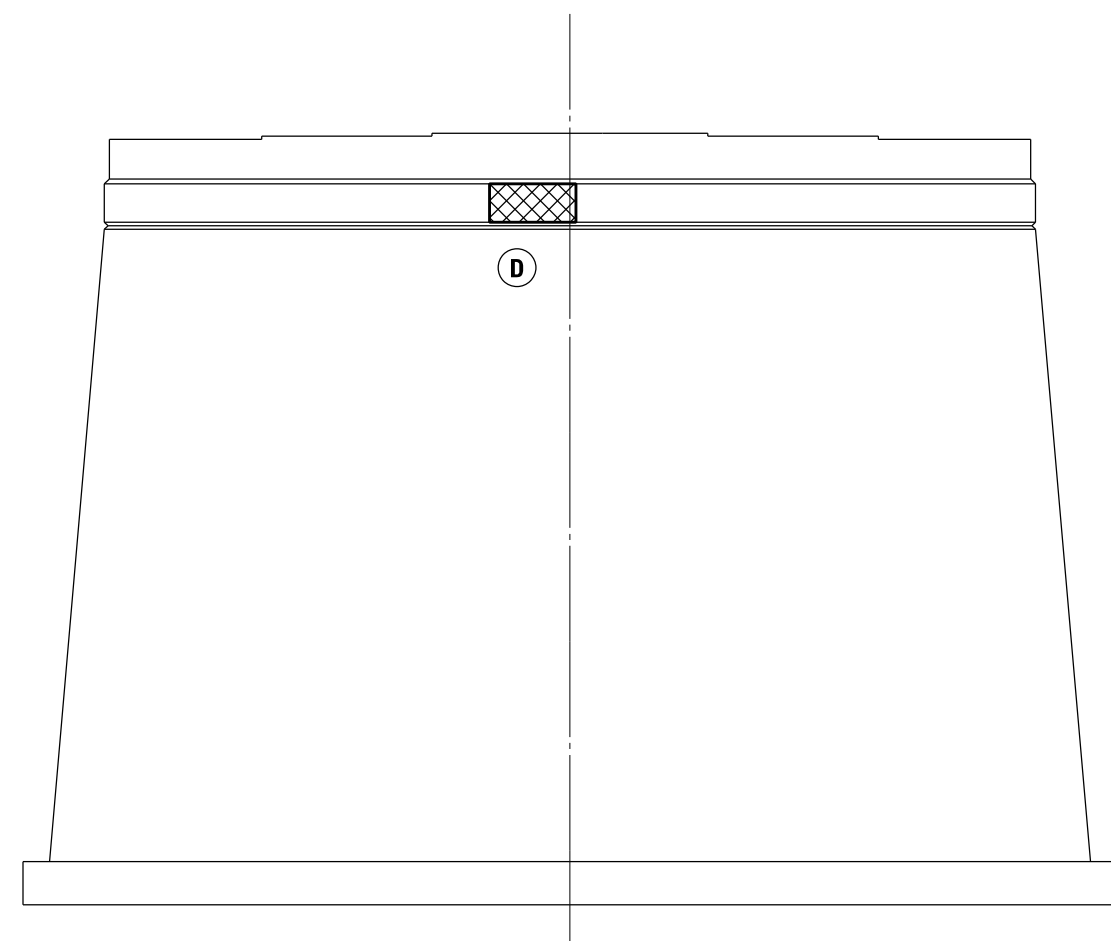
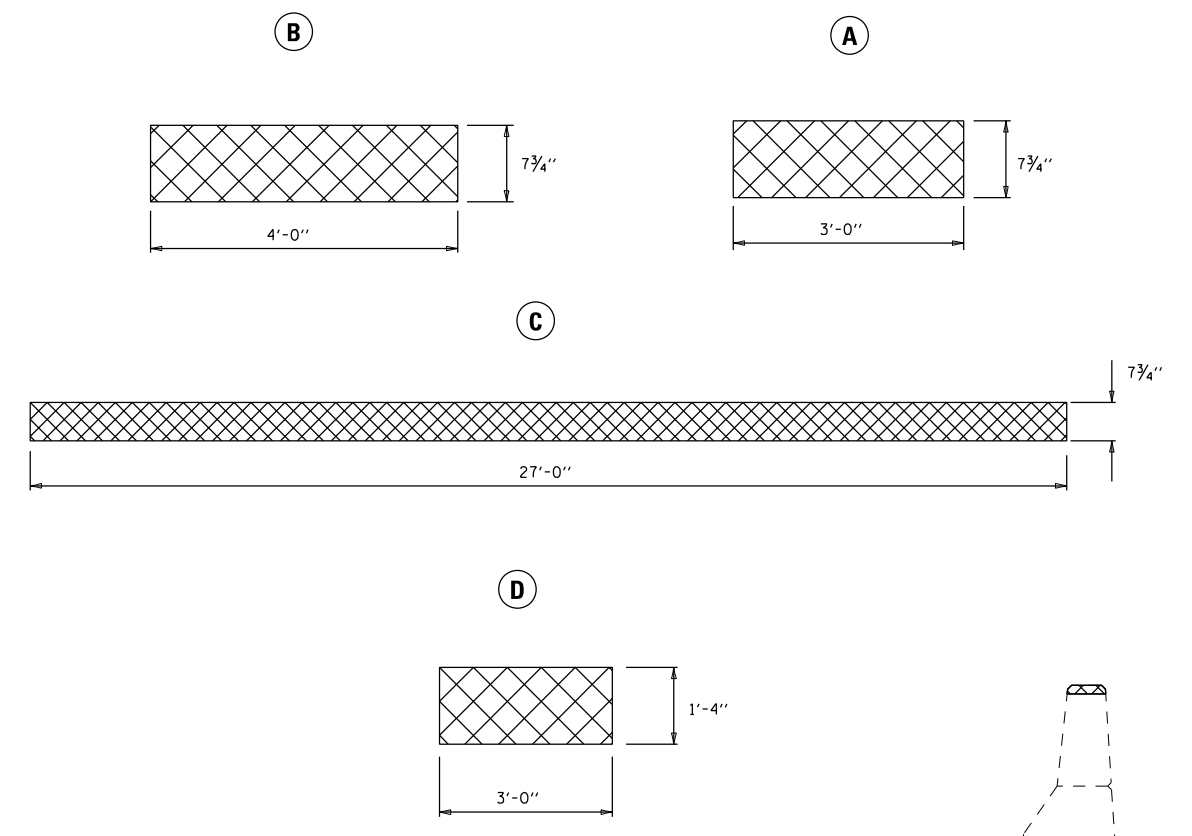
**APPROACH PAVEMENT DETAIL
S.N. 010-0039**

SCALE: 1" = 20' SHEET 8 OF 9 SHEETS STA. TO STA.

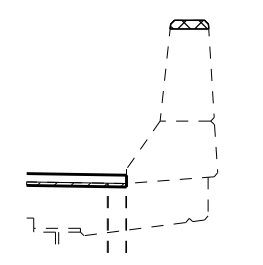
F.A.S. RTE.	SECTION	COUNTY	TOTAL SHEETS	SHEET NO.
1512	2X-BDR	CHAMPAIGN	23	17
CONTRACT NO. 70B79				
ILLINOIS FED. AID PROJECT				



NORTH SIDE OF DECK
TOP OF PARAPET



PIER 1 LOOKING EAST



SECTION A-A

BILL OF MATERIAL

Item	Unit	Total
Structural Repair of Concrete (Depth) <= 5"	Sq Ft	27.0

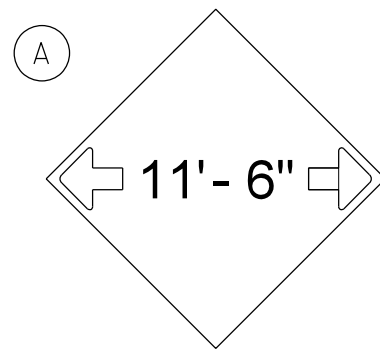
FILE NAME =	USER NAME = Jeff.Sherer	DESIGNED - JMS	REVISED -
px:\1ldot-pw.bentley.com\PIWIDOT\Documents\IDOT Offices\District 5\Projects\0570879\CDRAWNS\Structures\JMS\9-shft-StructurePlans		CHECKED -	REVISED -
	PLOT SCALE = 40.0000' / in.	DATE - 030518	REVISED -
	PLOT DATE = 12/6/2022		

**STATE OF ILLINOIS
DEPARTMENT OF TRANSPORTATION**

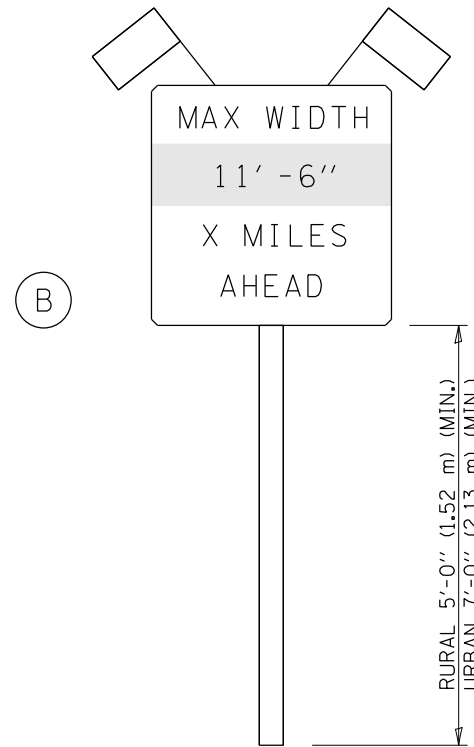
**DETAIL OF STRUCTURAL REPAIR
OF CONCRETE <= 5" S.N. 010-0039**

SCALE: NONE SHEET NO. 9 OF 9 SHEETS STA. TO STA.

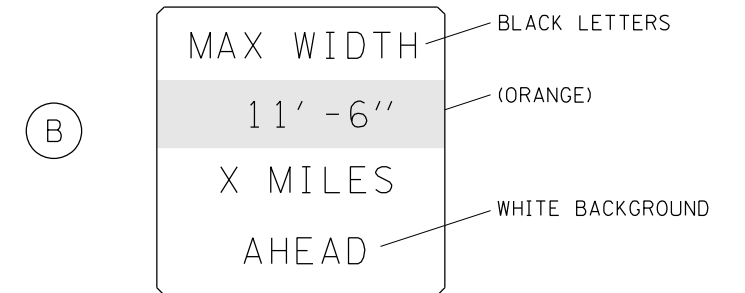
F.A.S. RTE.	SECTION	COUNTY	TOTAL SHEETS	SHEET NO.
1512	2X-BDR	CHAMPAIGN	23	18
CONTRACT NO. 70B79				
ILLINOIS FED. AID PROJECT				



W12-2(O)-48"x48"(1200x1200)



SIGN PANEL, TYPE II



W12-I103(O)-48"x48"(1200x1200)
"D" LETTERS/NUMBERS

SIGN (A) 2 SIGNS - W12-2(O)-48"x48"(1200x1200) ARE TO BE PLACED AS SHOWN IN THE PLANS OR AS DIRECTED BY THE ENGINEER.

SIGN (B) 2 SIGNS - (SIGN PANEL, TYPE II) AS SHOWN ARE TO BE PLACED AS SHOWN IN THE PLANS OR AS DIRECTED BY THE ENGINEER.

GENERAL NOTES

1. ALL TRAFFIC CONTROL DEVICES SHALL BE FURNISHED, ERECTED AND MAINTAINED BY THE CONTRACTOR.
2. ALL (B) SIGNS SHALL HAVE FLAGS INSTALLED UNLESS OTHERWISE DIRECTED.
3. LOCATIONS OF TRAFFIC CONTROL DEVICES MAY BE ADJUSTED BY THE ENGINEER.
4. ALL TRAFFIC CONTROL SHOWN ON THIS SHEET SHALL BE PAID FOR AT THE CONTRACT LUMP SUM PRICE FOR WIDTH RESTRICTION SIGNING.
5. ALL SIGNS SHALL BE POST MOUNTED UNLESS OTHERWISE DIRECTED.
6. ALL SIGNS SHOWN ORANGE (O) SHALL BE FLUORESCENT ORANGE.
7. ALL SIGNS SHOWN SHALL CONSIST OF THE CURRENT RETROREFLECTIVE SHEETING REQUIREMENTS AS OUTLINED IN SECTION 1106.01 OF THE STANDARD SPECIFICATIONS BOOK.

Note: All dimensions are in INCHES (millimeters) unless otherwise shown.

MODEL: \\MODELS\MAMES FILE: MAMES: public\zshenley.com\HWIDOT\Documents\DOT Offices\Burling. S\Projects\0570879\CADD\Structures\70879-sh-StructurePlans.dgn

USER NAME = Jeff.Sherer	DESIGNED -	REVISED -
	DRAWN -	REVISED -
PLOT SCALE = 40.0000 ' / in.	CHECKED -	REVISED -
PLOT DATE = 12/6/2022	DATE -	REVISED -

**STATE OF ILLINOIS
DEPARTMENT OF TRANSPORTATION**

WIDTH RESTRICTION SIGNING

SCALE: N.T.S. SHEET 1 OF 1 SHEETS STA. TO STA.

DISTRICT 5 DETAIL NO. X7200201

F.A.S. RTE.	SECTION	COUNTY	TOTAL SHEETS	SHEET NO.
1512	2X-BDR	CHAMPAIGN	23	19
			CONTRACT NO. 70B79	
		ILLINOIS	FED. AID PROJECT	



FILE NAME =	USER NAME = Jeff.Sherer	DESIGNED - JMS	REVISED -
px:\idot-pw.bentley.com\PIDOT\Documents\IDOT Offices\District 5\Projects\0570879\CDRAWN\Structures\2019-sh1-StructurePlans		CHECKED -	REVISED -
	PLOT SCALE = 40.0000' / in.	DATE - 030821	REVISED -
	PLOT DATE = 12/6/2022		

**STATE OF ILLINOIS
DEPARTMENT OF TRANSPORTATION**

**LOCATIONS OF WIDTH RESTRICTION SIGNING
S.N. 010-0039**

SCALE: NONE SHEET NO. 1 OF 4 SHEETS STA. TO STA.

F.A.S. RTE.	SECTION	COUNTY	TOTAL SHEETS	SHEET NO.
1512	2X-BDR	CHAMPAIGN	23	20
CONTRACT NO. 70B79				
ILLINOIS FED. AID PROJECT				



FILE NAME =	USER NAME = Jeff.Sherer	DESIGNED - JMS	REVISED -
px:\idot-pw.bentley.com\PIDOT\Documents\IDOT Offices\District 5\Projects\0570879\CDRAWN\Structures\2019-sh1-StructurePlans		CHECKED -	REVISED -
	PLOT SCALE = 40.0000' / in.	DATE - 030821	REVISED -
	PLOT DATE = 12/6/2022		

**STATE OF ILLINOIS
DEPARTMENT OF TRANSPORTATION**

**LOCATIONS OF WIDTH RESTRICTION SIGNING
S.N. 010-0039**

SCALE: NONE SHEET NO. 2 OF 4 SHEETS STA. TO STA.

F.A.S. RTE.	SECTION	COUNTY	TOTAL SHEETS	SHEET NO.
1512	2X-BDR	CHAMPAIGN	23	21
CONTRACT NO. 70B79				
ILLINOIS FED. AID PROJECT				



FILE NAME =	USER NAME = Jeff.Sherer	DESIGNED - JMS	REVISED -
px:\idot-pw.bentley.com\PIDOT\Documents\IDOT Offices\District 5\Projects\0570879\CDRAWN Structures\2019-sh1-StructurePlans		CHECKED -	REVISED -
	PLOT SCALE = 40.0000' / in.	DATE - 030821	REVISED -
	PLOT DATE = 12/6/2022		

**STATE OF ILLINOIS
DEPARTMENT OF TRANSPORTATION**

**LOCATIONS OF WIDTH RESTRICTION SIGNING
S.N. 010-0039**

SCALE: NONE SHEET NO. 3 OF 4 SHEETS STA. TO STA.

F.A.S. RTE.	SECTION	COUNTY	TOTAL SHEETS	SHEET NO.
1512	2X-BDR	CHAMPAIGN	23	22
CONTRACT NO. 70B79				
ILLINOIS FED. AID PROJECT				



FILE NAME =	USER NAME = Jeff.Sherer	DESIGNED - JMS	REVISED -
px:\idot-pw.bentley.com\PIDOT\Documents\IDOT Offices\District 5\Projects\0570879\CDRAWN\Structures\2015-9-sh1-StructurePlans		DRAWN - JMS	REVISED -
	PLOT SCALE = 40.0000' / in.	CHECKED -	REVISED -
	PLOT DATE = 12/6/2022	DATE - 030821	REVISED -

**STATE OF ILLINOIS
DEPARTMENT OF TRANSPORTATION**

**LOCATIONS OF WIDTH RESTRICTION SIGNING
S.N. 010-0039**

SCALE: NONE SHEET NO. 4 OF 4 SHEETS STA. TO STA.

F.A.S. RTE.	SECTION	COUNTY	TOTAL SHEETS	SHEET NO.
1512	2X-BDR	CHAMPAIGN	23	23
				CONTRACT NO. 70B79
ILLINOIS FED. AID PROJECT				