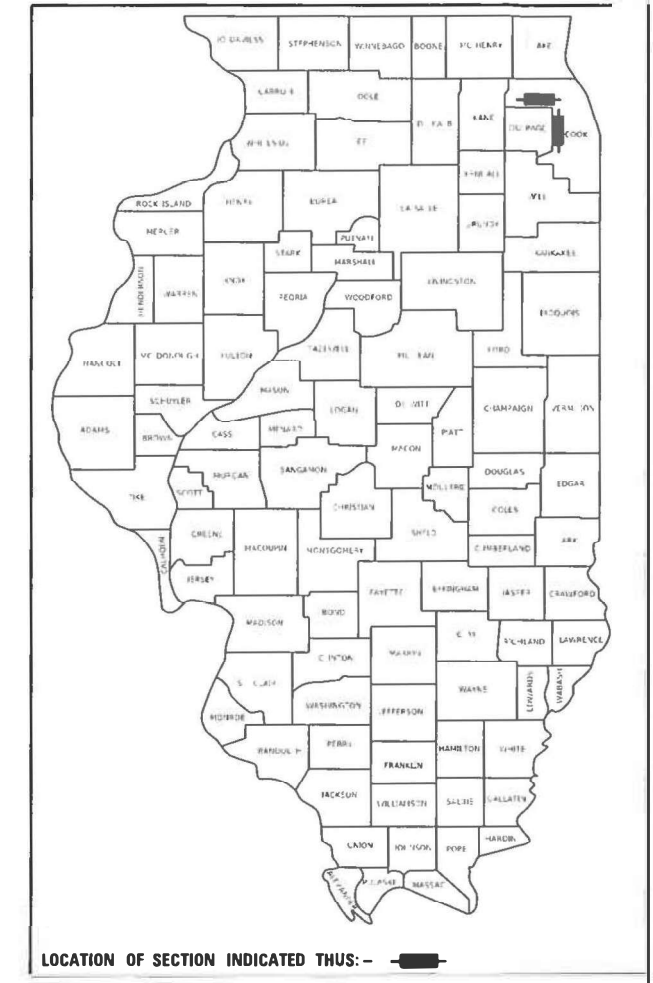


STATE OF ILLINOIS
DEPARTMENT OF TRANSPORTATION

F.A. RTE.	SECTION	COUNTY	TOTAL SHEETS	SHEET NO.
FAI 290 22 PF		COOK	11	1
ILLINOIS CONTRACT NO. 62R59				

D-91-162-22

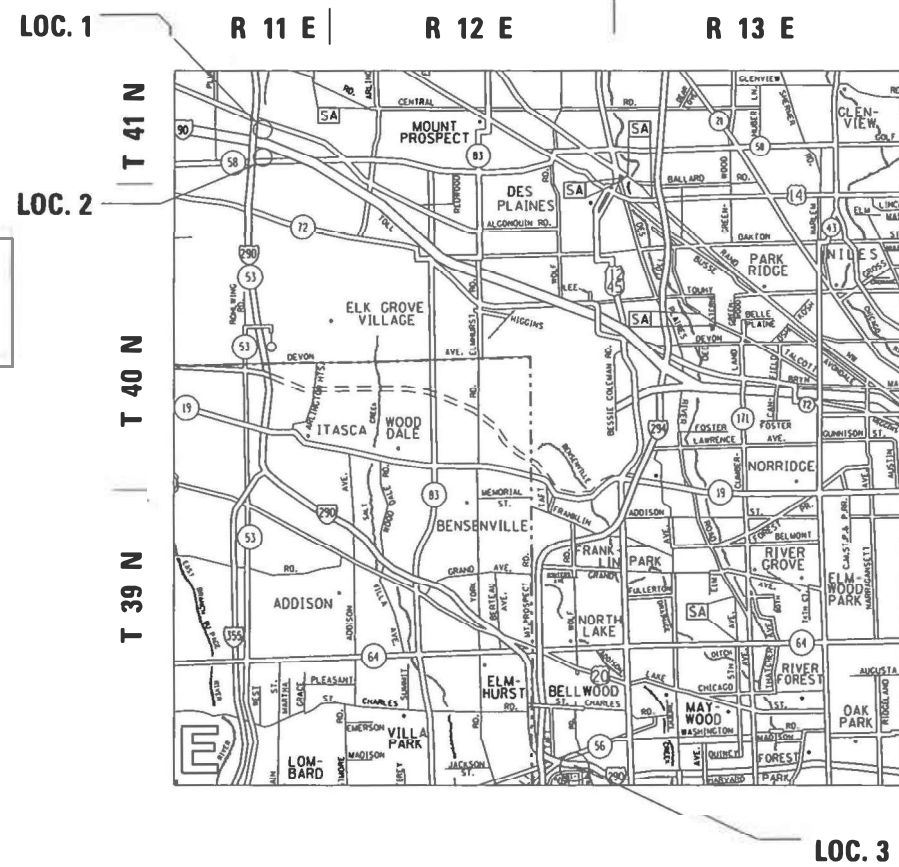


LOCATION OF SECTION INDICATED THUS: - [black rectangle]

**PROPOSED
HIGHWAY PLANS**

ROUTE: FAI 290 (I-290)/ FAP 342 (IL 53)
SECTION: FAI 290 22 PF
PROJECT HSIP-VOAL(088)
PAVEMENT FRICTION (HFST AND DIAMOND GRINDING)
COOK COUNTY

C-91-207-22



FOR INDEX OF SHEETS, SEE SHEET NO. 2

PROJECT LOCATED WITHIN
THE VILLAGE OF ROLLING MEADOWS
THE VILLAGE OF HILLSIDE

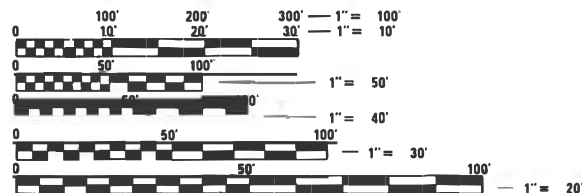
TRAFFIC DATA:

I-90 WB TO IL 53 NB RAMP
2019 - ADT = 14000
SPEED LIMIT = 35 MPH

I-290 NB TO I-90 EB RAMP
2019 - ADT = 10600
SPEED LIMIT = 25 MPH

I-290 EB NEAR I-88
2019 - ADT = 92600
SPEED LIMIT = 55 MPH

LOCATION 1: I-90 WB TO IL 53 NB RAMP
LOCATION 2: I-290 NB TO I-90 EB RAMP
LOCATION 3: I-290 EB NEAR I-88



FULL SIZE PLANS HAVE BEEN PREPARED USING STANDARD ENGINEERING SCALES. REDUCED SIZED PLANS WILL NOT CONFORM TO STANDARD SCALES. IN MAKING MEASUREMENTS ON REDUCED PLANS, THE ABOVE SCALES MAY BE USED.

J.U.L.I.E.
JOINT UTILITY LOCATION INFORMATION FOR EXCAVATORS
1-800-892-0123
OR 811

PROJECT ENGINEER: DAN WILGREEN (847) 705-4240
PROJECT MANAGER: FAWAD AQUEEL

CONTRACT NO. 62R59

GROSS LENGTH = 4380 FT. = 0.83 MILE
NET LENGTH = 4380 FT. = 0.83 MILE

STATE OF ILLINOIS
DEPARTMENT OF TRANSPORTATION

SUBMITTED October 11, 2022
José Rosales REGIONAL ENGINEER
December 9, 2022
Steph McNeill ENGINEER OF DESIGN AND ENVIRONMENT
December 9, 2022
Steph McNeill DIRECTOR OF HIGHWAYS PROJECT IMPLEMENTATION

PRINTED BY THE AUTHORITY
OF THE STATE OF ILLINOIS

INDEX OF SHEETS

SHEET NO.	DESCRIPTION
1	COVER SHEET
2	INDEX OF SHEETS, STATE STANDARDS, AND GENERAL NOTES
3	SUMMARY OF QUANTITIES
4	EXISTING AND PROPOSED TYPICAL SECTIONS
5-7	ROADWAY PLANS
8	ENTRANCE AND EXIT RAMP CLOSURE DETAILS (TC-08)
9	TRAFFIC CONTROL DETAILS FOR FREEWAY SINGLE AND MULTIPLE LANE WEAVE (TC-09)
10	TRAFFIC CONTROL DETAILS FOR FREEWAY SHOULDER CLOSURES AND PARTIAL RAMP CLOSURES (TC-17)
11	FREEWAY/EXPRESSWAY SIGNING FOR FLAGGING OPERATIONS AT WORK ZONE OPENINGS ON FREEWAYS/EXPRESSWAYS (TC-18)

STATE STANDARDS

STANDARD NO.	DESCRIPTION
000001-08	STANDARD SYMBOLS, ABBREVIATIONS AND PATTERNS
442201-03	CLASS C AND D PATCHES
642006-01	SHOULDER RUMBLE STRIPS, 8 IN.
701400-11	APPROACH TO LANE CLOSURE, FREEWAY/EXPRESSWAY
701401-13	LANE CLOSURE, FREEWAY/EXPRESSWAY
701411-09	LANE CLOSURE, MULTI LANE AT ENTRANCE OR EXIT RAMP FOR SPEED >= 45 MPH
701428-01	TRAFFIC CONTROL SETUP AND REMOVAL FREEWAY/EXPRESSWAY
701446-11	TWO LANE CLOSURE FREEWAY/EXPRESSWAY
701427-05	LANE CLOSURE, MULTI LANE, INTERMITTENT OR MOVING OPERATIONS, FOR SPEEDS <= 40 MPH
701901-08	TRAFFIC CONTROL DEVICES
780001-05	TYPICAL PAVEMENT MARKINGS
781001-04	TYPICAL APPLICATIONS RAISED REFLECTIVE PAVEMENT MARKERS

GENERAL NOTES

- BEFORE STARTING ANY EXCAVATION, THE CONTRACTOR SHALL CALL "J.U.L.I.E." AT (800) 892-0123 OR 811 FOR FIELD LOCATIONS OF BURIED ELECTRIC, TELEPHONE AND GAS UTILITIES. 48 HOUR NOTIFICATION IS REQUIRED.
- THE CONTRACTOR SHALL COORDINATE CONSTRUCTION ACTIVITIES WITH UTILITY COMPANIES, AND THE VILLAGES OF ROLLING MEADOWS AND HILLSIDE.
- THE CONTRACTOR WILL NOT BE ALLOWED TO SET UP A YARD OR FIELD OFFICE ON STATE PROPERTY (or TOLL WAY) WITHOUT WRITTEN PERMISSION FROM THE DEPARTMENT.
- ALL DAMAGE TO EXISTING PAVEMENT MARKINGS OR RAISED REFLECTIVE PAVEMENT MARKERS OUTSIDE THE REMOVAL LINE SHOWN ON THE PLANS SHALL BE REPLACED AT NO ADDITIONAL COST TO THE DEPARTMENT.
- BEFORE BEGINNING ANY WORK, THE CONTRACTOR SHALL RETAIN AND RECORD FOR FUTURE REFERENCE, ALL EXISTING PAVEMENT MARKING LINES (AND RAISED REFLECTIVE PAVEMENT MARKERS) IN ORDER THAT THESE LOCATIONS CAN BE RE-ESTABLISHED FOR STRIPING. EXACT LOCATIONS OF ALL PAVEMENT MARKINGS SHALL BE AS SHOWN ON THE PLANS OR AS DIRECTED BY THE ENGINEER.
- ALL PAVEMENT PATCHING LOCATIONS ON THE I-90 WB TO IL 53 NB RAMP AND I-290 NB TO I-90 EB RAMP WILL BE DETERMINED IN THE FIELD BY THE ENGINEER.
- IT SHALL BE THE CONTRACTOR'S RESPONSIBILITY TO VERIFY ALL DIMENSIONS AND CONDITIONS EXISTING IN THE FIELD PRIOR TO CONSTRUCTION AND ORDERING OF MATERIALS.
- FRAMES AND GRATES ADJUSTMENT OF PRIVATE UTILITIES WITHIN THE LIMITS OF THE IMPROVEMENTS SHALL BE DONE BY THEIR RESPECTIVE OWNERS AND ARE NOT PART OF THIS CONTRACT.
- THE CONTRACTOR SHALL CONTACT THE DISTRICT ONE TRAFFIC CONTROL SUPERVISOR AT (847)705-4155 A MINIMUM OF 72 HOURS IN ADVANCE OF BEGINNING OF WORK. *ISTHA DAILY TRAFFIC CONTROL AUTHORIZATION AT (630)241-6800 EXT.3822 (FOR TOLL WAYS)
- THE CONTRACTOR SHALL BE REQUIRED TO PROVIDE ACCESS TO ABUTTING PROPERTY AT ALL TIMES DURING THE CONSTRUCTION OF THIS PROJECT.
- EXISTING BROKEN FRAMES AND LIDS SHALL BE REMOVED AND DISPOSED OF BY THE CONTRACTOR AND SHALL BE REPLACED AS DIRECTED BY THE ENGINEER. REPLACEMENT FRAMES AND LIDS WILL BE PAID FOR ACCORDING TO ARTICLE 109.04 OF THE STANDARD SPECIFICATIONS UNLESS A SEPARATE PAY ITEM HAS BEEN PROVIDED.
- DO NOT SCALE PLANS FOR CONSTRUCTION DIMENSIONS.
- PAVEMENT MARKING TAPE, TYPE III SHALL BE USED FOR SHORT TERM PAVEMENT MARKINGS ON ALL FINAL SURFACES.
- UNLESS OTHER CONDITIONS WARRANT EXTENDED LANE CLOSURE AS DETERMINED AND APPROVED IN WRITING BY THE ENGINEER OR AS PROVIDED FOR IN THE CONTRACT SPECIFICATIONS. OVERNIGHT CLOSURES SHALL NOT BE ALLOWED FOR REHABILITATION PROJECTS INVOLVING DAYTIME MILLING AND RESURFACING OPERATIONS AND CLASS D PATCHING.
- DIAMOND GRINDING LIMITS DO NOT INCLUDE GORE AREAS OR SHOULDERS.
- THE RESIDENT ENGINEER SHALL CONTACT MICHAEL PALELLO (MICHAEL.PALELLO@ILLINOIS.GOV) , AREA TRAFFIC FIELD ENGINEER. A MINIMUM OF 2 WEEKS PRIOR TO PLACEMENT OF PERMANENT PAVEMENT MARKINGS.
- THE CONTRACTOR SHALL USE CARE WHEN PAVEMENT GROOVING NEAR ANY EXISTING ITEMS WHICH WILL REMAIN. ANY DAMAGE DONE BY THE CONTRACTOR TO EXISTING ITEMS TO REMAIN, INCLUDING PAVEMENT MARKINGS, LOOPS, AND SENSORS, SHALL BE REPLACED AT THE CONTRACTOR'S EXPENSE.

HOT-MIX ASPHALT MIXTURE REQUIREMENTS			
MIXTURE USES	MIXTURE TYPE	AIR VOIDS @ Ndes	QUALITY MANAGEMENT PROGRAM (QMP)
PATCHING LOCATIONS: I-90 WB TO IL 53 NB RAMP I-290 NB TO I-90 EB RAMP	CLASS D PATCHES (HMA BINDER IL-19 mm)	4% @ 70 GYR	QC/QA
QMP DESIGNATION: QUALITY CONTROL/QUALITY ASSURANCE (QC/QA); QUALITY CONTROL FOR PERFORMANCE (QCP); PAY FOR PERFORMANCE (PPF)			

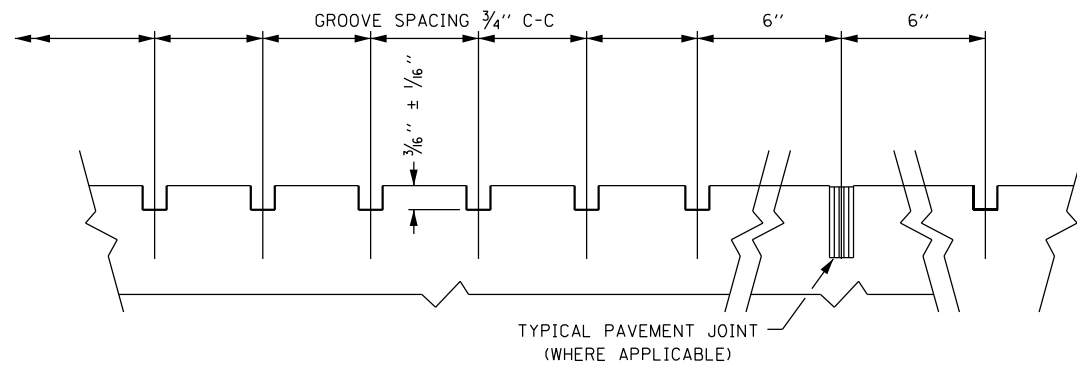
- NOTE 1: THE UNIT WEIGHT USED TO CALCULATE ALL HMA SURFACE MIXTURE QUANTITIES IS 112 LBS/SQ YD/IN.
- NOTE 2: THE "AC TYPE" FOR POLYMERIZED HMA MIXES SHALL BE "SBS/SBR PG 76 -22" AND FOR NON-POLYMERIZED HMA THE "AC TYPE" SHALL BE "PG 64 -22" UNLESS MODIFIED BY RECLAIMED MATERIALS SPECIFICATIONS.

MODEL: Default
FILE: MainE_Plan\I-90 WB Ramp\CADD\Drawings\DOT Offices\District 1\Projects\I-90 WB Ramp\CADD\Drawings\DOT Offices\MainE_Plan\I-90 WB Ramp\I-90 WB TO IL 53 NB RAMP AND I-290 NB TO I-90 EB RAMP.dgn

USER NAME = Mohamed.Esily	DESIGNED -	REVISED -	STATE OF ILLINOIS DEPARTMENT OF TRANSPORTATION	INDEX OF SHEETS, STATE STANDARDS, AND GENERAL NOTES			F.A. RTE.	SECTION	COUNTY	TOTAL SHEETS	SHEET NO.	
DRAWN -	REVISD -	REVISED -		I-90 WB TO IL 53 NB ,I-290 NB TO I-90 EB AND I-290 EB NEAR I-88			-	FAI 290 22 PF	COOK	11	2	
PLOT SCALE = 100.0000 ' / in.	CHECKED -	REVISED -		SCALE:	SHEET	OF	SHEETS	STA.	TO	STA.	ILLINOIS FED. AID PROJECT	
PLOT DATE = 10/20/2022	DATE -	REVISED -										

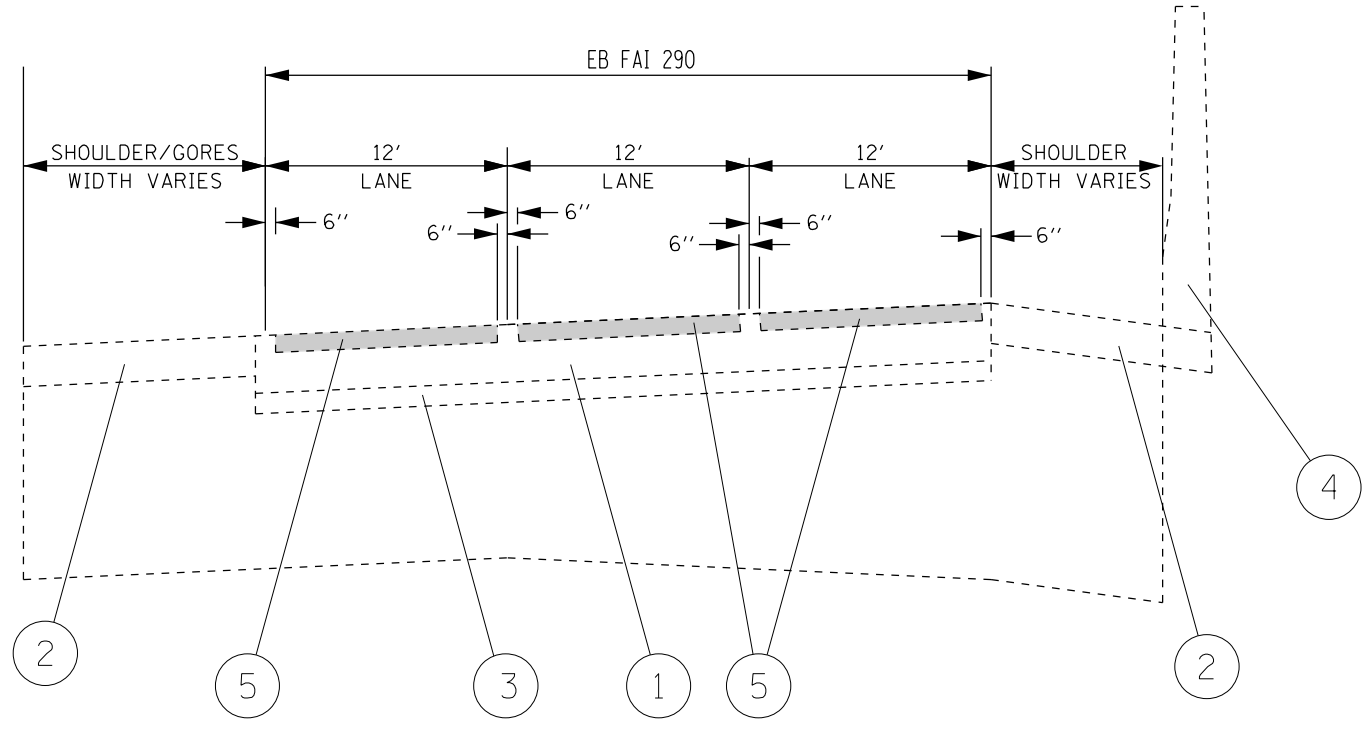
SUMMARY OF QUANTITIES			TOTAL QUANTITIES URBAN	CONSTRUCTION TYPE CODE					
CODE NO	ITEM	UNIT		90% FED 10% STATE 0005					
X6700407	ENGINEER'S FIELD OFFICE, TYPE A (D1)	CAL MO	6	6					
67100100	MOBILIZATION	L SUM	1	1					
70300221	TEMPORARY PAVEMENT MARKING - LINE 4"-	FOOT	6704	6704					
	PAINT								
70306120	TEMPORARY PAVEMENT MARKING - LINE 4" -	FOOT	6704	6704					
	TYPE III TAPE								
* 78009000	MODIFIED URETHANE PAVEMENT MARKING -	SO FT	73	73					
	LETTERS AND SYMBOLS								
* 78000200	THERMOPLASTIC PAVEMENT MARKING - LINE	FOOT	4610	4610					
	4"								
* 78009004	MODIFIED URETHANE PAVEMENT MARKING -	FOOT	4414	4414					
	LINE 4"								
* 78009006	MODIFIED URETHANE PAVEMENT MARKING -	FOOT	257	257					
	LINE 6"								
X0327693	HIGH FRICTION SURFACE TREATMENT	SO YD	5894	5894					
X4510050	HIGH FRICTION SURFACE TREATMENT	FOOT	5030	5030					
	CRACK FILLING								
Z0037300	PAVEMENT GROOVING	SO YD	4112	4112					
	* SPECIALTY ITEMS								

SUMMARY OF QUANTITIES			TOTAL QUANTITIES URBAN	CONSTRUCTION TYPE CODE					
CODE NO	ITEM	UNIT		90% FED 10% STATE 0005					
44201765	CLASS D PATCHES, TYPE II, 10 INCH	SO YD	50	50					
44201769	CLASS D PATCHES, TYPE III, 10 INCH	SO YD	125	125					
44201771	CLASS D PATCHES, TYPE IV, 10 INCH	SO YD	125	125					
64200108	SHOULDER RUMBLE STRIPS, 8 INCH	FOOT	3200	3200					
* 78300202	PAVEMENT MARKING REMOVAL - WATER BLASTING	FOOT	6704	6704					
70200100	NIGHTTIME WORK ZONE LIGHTING	L SUM	1	1					
X7011015	TRAFFIC CONTROL AND PROTECTION	L SUM	1	1					
	(EXPRESSWAYS)								



GROOVE DETAIL

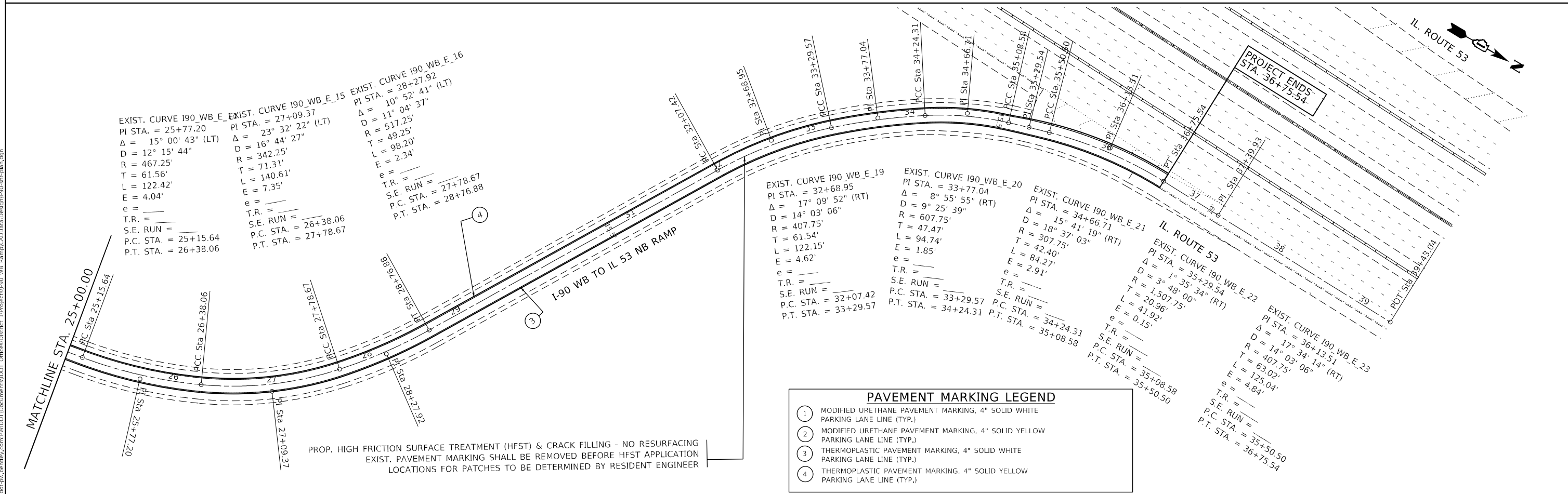
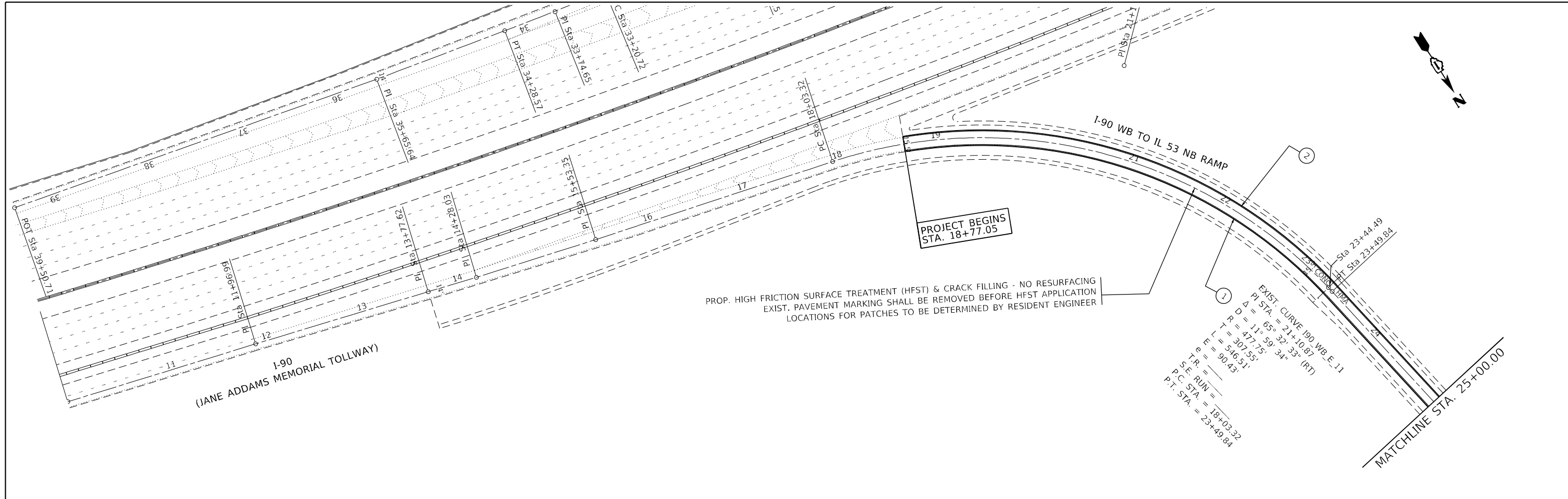
- NOTES**
- 1.) TYPICAL CROSS SECTION AND GROOVE DETAIL IS FOR INFORMATION ONLY. TYPICAL SECTION VARIES THROUGHOUT IMPROVEMENT AREA.
 - 2.) REFER TO THE "PAVEMENT GROOVING" SPECIAL PROVISION.
 - 3.) THE PAVEMENT GROOVING PATTERN SHOULD BE 1/8 INCH WIDE AND 3/16 INCH ± 1/16 INCH DEEP AT 3/4 INCH CENTERS.
 - 4.) PROPOSED PAVEMENT GROOVING (SEE GROOVE DETAIL)
 - 5.) PAVEMENT GROOVING LIMITS DO NOT INCLUDE GORE AREAS OR SHOULDERS.
 - 6.) SUCCESSIVE PASSES OF THE GROOVING MACHINE SHALL NOT OVERLAP.
 - 7.) THE CONTRACTOR SHALL MAINTAIN THE EXISTING CROSS SLOPES.



- LEGEND**
- 1) EXISTING CONTINUOUSLY REINFORCED CONCRETE PAVEMENT
 - 2) EXISTING PC CONCRETE SHOULDER
 - 3) EXISTING STABILIZED SUB-BASE
 - 4) EXISTING PC CONCRETE BARRIER WALL, WIDTH VARIES
 - 5) PROPOSED PAVEMENT GROOVING (SEE GROOVE DETAIL)

**EB FAI 290 (DWIGHT D. EISENHOWER EXPRESSWAY)
TYPICAL SECTION**

FILE NAME =	USER NAME = Mohamed.Esily	DESIGNED -	REVISED -	STATE OF ILLINOIS DEPARTMENT OF TRANSPORTATION	EXISTING AND PROPOSED TYPICAL SECTIONS I-290 EB, TO NEAR I-88				F.A.I. RTE.	SECTION	COUNTY	TOTAL SHEETS	SHEET NO.
pw:\idot-pw.bentley.com\PWIDOT\Documents\IDOT Offices\District 1\Projects\I-90 WB Rep\Drawn\Design\I-90-sht-typico1.dgn		CHECKED -	REVISED -		FAI 290 22 PF	COOK	11	4					
Default	PLOT SCALE = 100.0000' / in.	DATE -	REVISED -		SCALE: SHEET OF SHEETS STA. TO STA.				CONTRACT NO. 62R59				
	PLOT DATE = 10/20/2022				ILLINOIS FED. AID PROJECT								



PAVEMENT MARKING LEGEND

①	MODIFIED URETHANE PAVEMENT MARKING, 4" SOLID WHITE PARKING LANE LINE (TYP.)
②	MODIFIED URETHANE PAVEMENT MARKING, 4" SOLID YELLOW PARKING LANE LINE (TYP.)
③	THERMOPLASTIC PAVEMENT MARKING, 4" SOLID WHITE PARKING LANE LINE (TYP.)
④	THERMOPLASTIC PAVEMENT MARKING, 4" SOLID YELLOW PARKING LANE LINE (TYP.)

MODEL: Default
 FILE: I:\MISC_Plan\I-90_WB_Ramp\I-90_WB_Ramp\CADD\Drawings\I-90_WB_Ramp.dwg
 MODEL: Default
 FILE: I:\MISC_Plan\I-90_WB_Ramp\I-90_WB_Ramp\CADD\Drawings\I-90_WB_Ramp.dwg

USER NAME = Monamed,Esilly	DESIGNED -	REVISED -
DRAWN -	REVISED -	REVISED -
PLOT SCALE = 100,0000' / in.	CHECKED -	REVISED -
PLOT DATE = 10/20/2022	DATE -	REVISED -

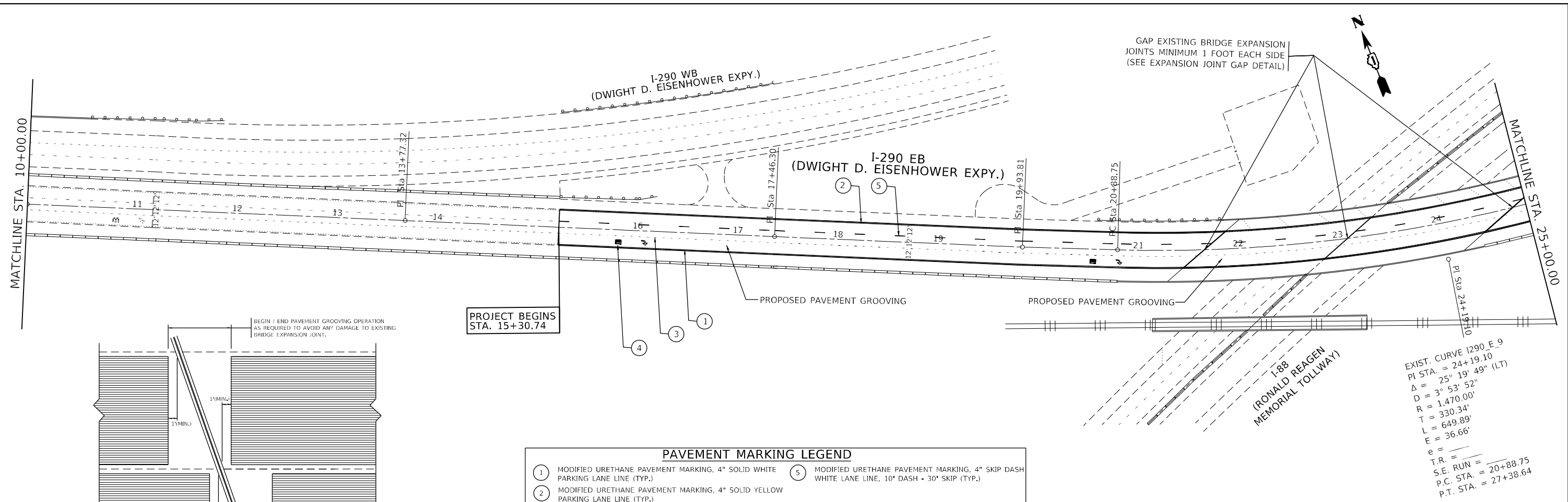
**STATE OF ILLINOIS
DEPARTMENT OF TRANSPORTATION**

ROADWAY PLAN
I-90 WB. TO IL. ROUTE 53 NB. RAMP

SCALE: 1"=50'

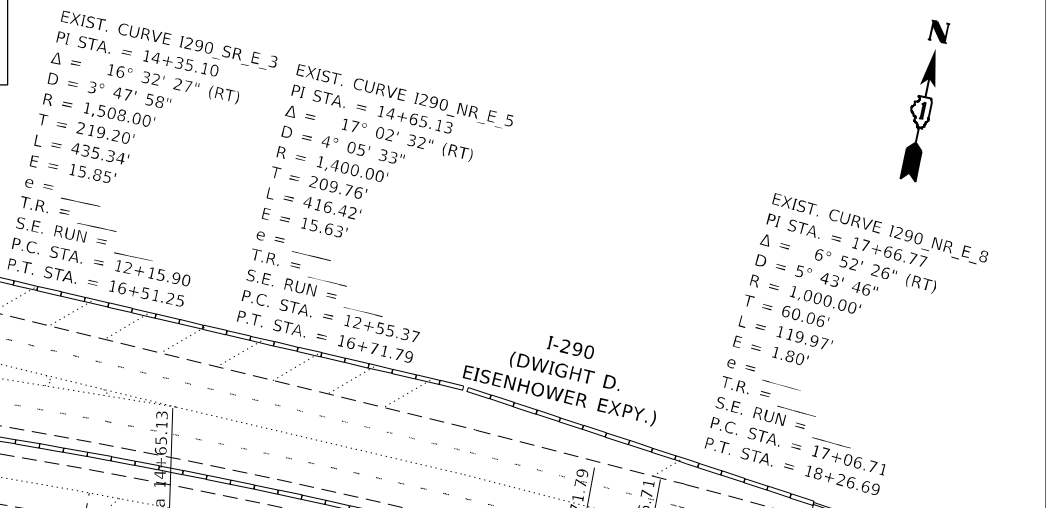
SHEET OF SHEETS STA. TO STA.

F.A. RTE.	SECTION	COUNTY	TOTAL SHEETS	SHEET NO.
	FAI 290 22 PF	COOK	11	5
ILLINOIS FED. AID PROJECT			CONTRACT NO. 62R59	



PAVEMENT MARKING LEGEND

① MODIFIED URETHANE PAVEMENT MARKING, 4" SOLID WHITE PARKING LANE LINE (TYP.)	⑤ MODIFIED URETHANE PAVEMENT MARKING, 4" SKIP DASH WHITE LANE LINE, 10' DASH - 30' SKIP (TYP.)
② MODIFIED URETHANE PAVEMENT MARKING, 4" SOLID YELLOW PARKING LANE LINE (TYP.)	
③ MODIFIED URETHANE MARKING, 6" DOTTED WHITE LINE, 2' DASH - 6' SKIP (TYP.)	
④ MODIFIED URETHANE PAVEMENT MARKING, LETTERS & SYMBOLS, SOLID WHITE (TYP.)	



MODEL: Default
 FILE: I-290_EB_TOLLS_2022.dwg
 PROJECT: I-290 WB Ramp/CADD/Design/1-290_eb_tolls.dwg
 USER: mmonamed

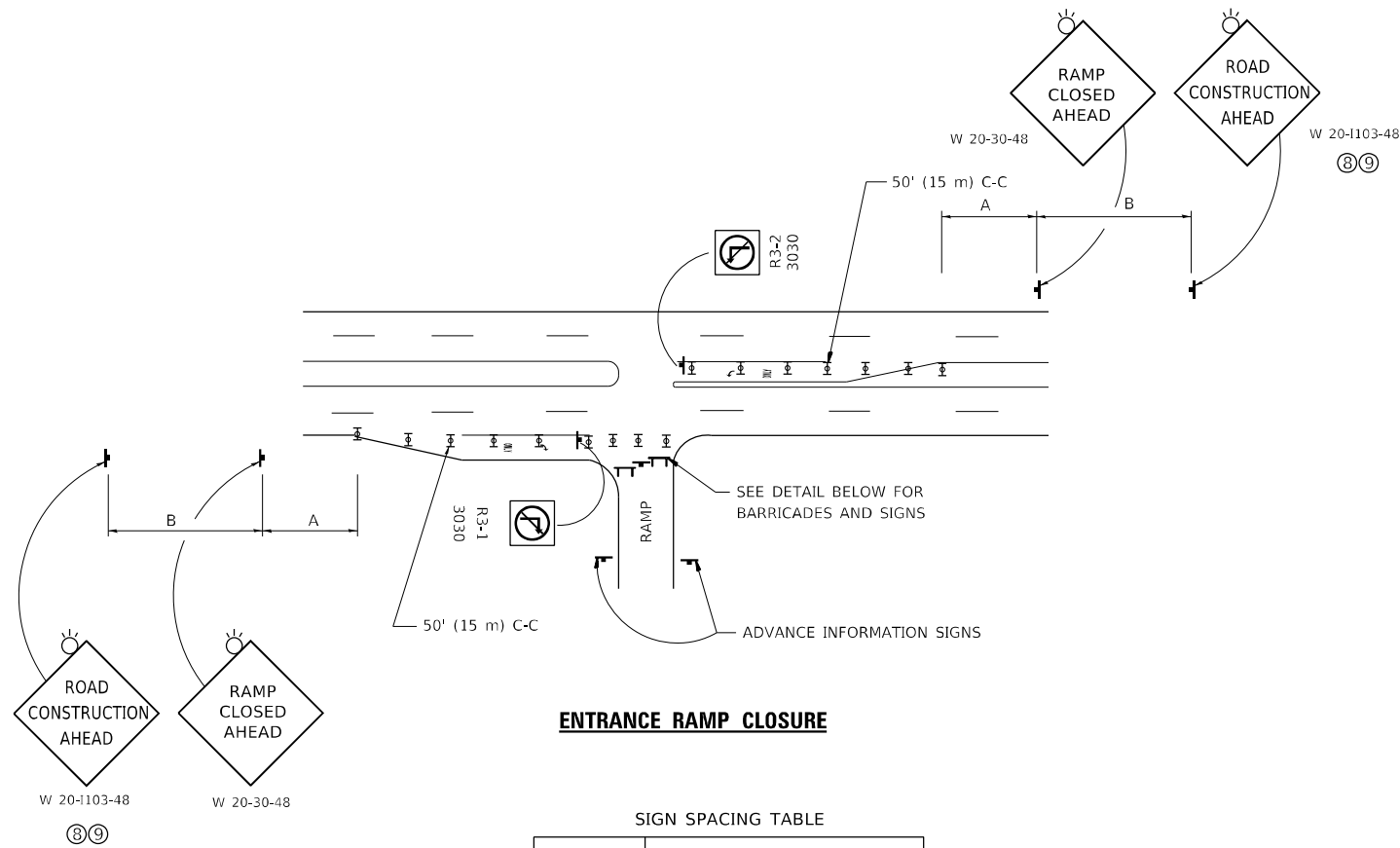
USER NAME = Monamed,Esilly	DESIGNED -	REVISED -
PLOT SCALE = 100,0000' / in.	DRAWN -	REVISED -
PLOT DATE = 10/20/2022	CHECKED -	REVISED -
	DATE -	REVISED -

**STATE OF ILLINOIS
DEPARTMENT OF TRANSPORTATION**

**ROADWAY PLAN
I-290 EB TO NEAR I-88**

SCALE: 1"=50' SHEET OF SHEETS STA. TO STA.

F.A. RTE.	SECTION	COUNTY	TOTAL SHEETS	SHEET NO.
	FAI 290 22 PF	COOK	11	7
ILLINOIS FED. AID PROJECT			CONTRACT NO. 62R59	

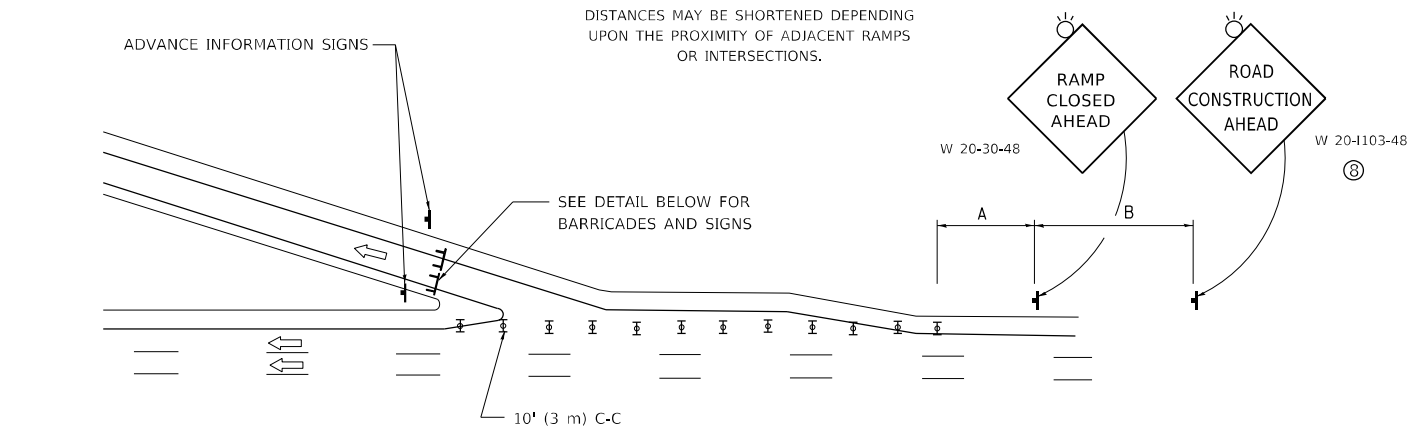


ENTRANCE RAMP CLOSURE

SIGN SPACING TABLE

FACILITY	DISTANCE BETWEEN SIGNS	
	A	B
EXPRESSWAY >24 HOURS	1000' (300 m)	1500' (450 m)
EXPRESSWAY ≤24 HOURS	500' (150 m)	500' (150 m)
ARTERIAL 55 MPH	500' (150 m)	500' (150 m)
ARTERIAL 50-45 MPH	350' (100 m)	350' (100 m)
ARTERIAL <45 MPH	200' (60 m)	200' (60 m)

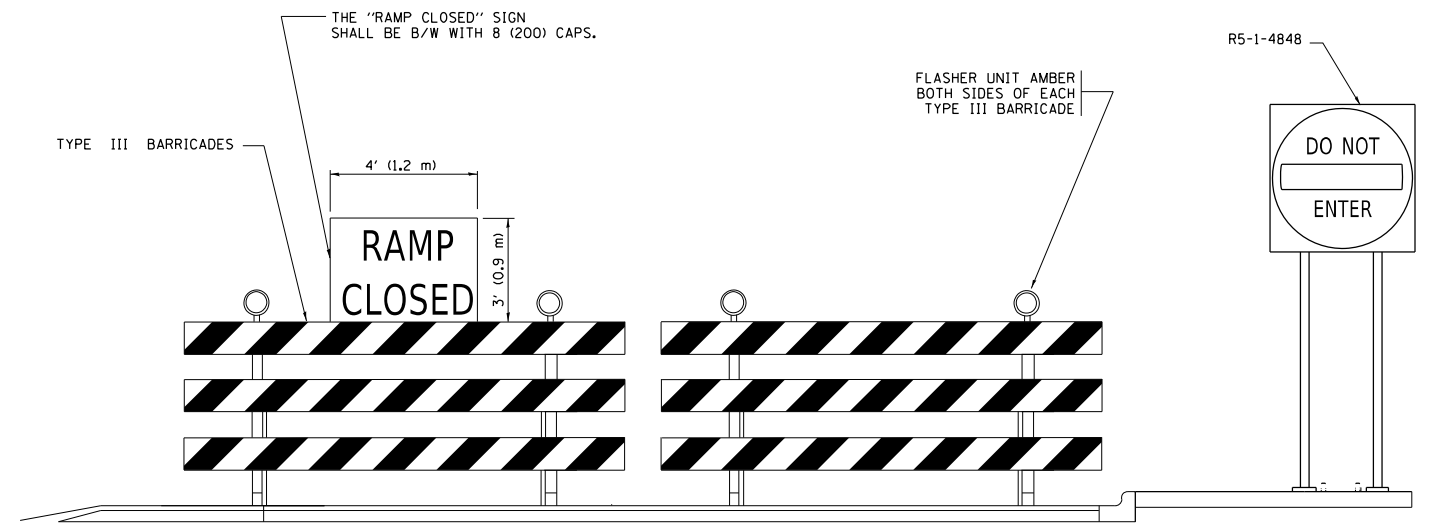
DISTANCES MAY BE SHORTENED DEPENDING UPON THE PROXIMITY OF ADJACENT RAMPS OR INTERSECTIONS.



EXIT RAMP CLOSURE

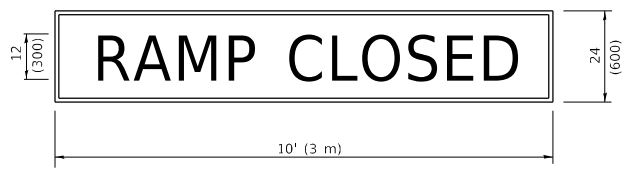
SYMBOLS

- ▬ TYPE II BARRICADE OR DRUM
- ▬ TYPE III BARRICADE WITH 2 FLASHING LIGHTS



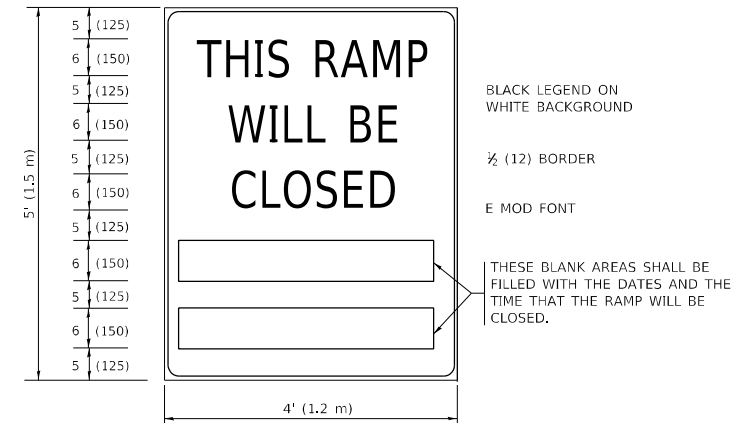
DETAIL FOR REQUIRED BARRICADES & SIGNS

RAMP CLOSURE ADVANCE WARNING SIGN



BLACK LEGEND ON ORANGE BACKGROUND MOUNTED DIAGONALLY
E MOD FONT
1 (25) BORDER
THESE SIGNS ARE REQUIRED ON ALL THE EXIT GUIDE SIGNS FOR EXIT RAMPS THAT WILL BE CLOSED FOR MORE THAN FOUR (4) CONSECUTIVE DAYS.

RAMP CLOSURE ADVANCE INFORMATION SIGN



BLACK LEGEND ON WHITE BACKGROUND
1/2 (12) BORDER
E MOD FONT
THESE BLANK AREAS SHALL BE FILLED WITH THE DATES AND THE TIME THAT THE RAMP WILL BE CLOSED.

THESE SIGNS ARE REQUIRED ON BOTH SIDES OF THE RAMP, MINIMUM OF 1 WEEK IN ADVANCE OF THE CLOSURE.
THESE SIGNS SHALL BE FABRICATED AND PAID FOR ACCORDING TO THE TEMPORARY INFORMATION SIGNING SPECIAL PROVISION

GENERAL NOTES:

- 1 CONES MAY BE SUBSTITUTED FOR DRUMS OR TYPE II BARRICADES DURING DAY OPERATIONS. CONES SHALL BE A MINIMUM OF 28 (700) HIGH.
- 2 VERTICAL BARRICADES SHALL NOT BE USED FOR RAMP CLOSURES.
- 3 A FLAGGER SHALL BE POSITIONED AT EACH CLOSED RAMP THAT IS OPEN TO CONSTRUCTION VEHICLES, PRECEDED BY A W20-7 FLAGGER WARNING SIGN.
- 4 ALL ROUTE MARKERS AND TRAILBLAZER ASSEMBLIES WHICH DIRECT MOTORISTS TO A CLOSED ENTRANCE RAMP SHALL BE COVERED WHEN THE RAMP IS CLOSED FOR MORE THAN FOUR (4) DAYS.
- 5 THE SIGNING AND BARRICADING WHICH IS REQUIRED BY THIS DETAIL SHALL BE INCLUDED IN THE COST OF TRAFFIC CONTROL AND PROTECTION (EXPRESSWAYS).
- 6 AUTHORIZATION FROM THE DISTRICT'S BUREAU OF TRAFFIC IS REQUIRED FOR ALL RAMP CLOSURES.
- 7 THE RAMP CLOSURE ADVANCE INFORMATION SIGNS SHALL BE ERECTED IF THE CLOSURE TIME EXCEEDS TWENTY-FOUR (24) HOURS. ADDITIONAL ADVANCE WARNING SIGNS ON EXIT GUIDE SIGNING WILL BE REQUIRED FOR EXIT RAMP CLOSURES THAT EXCEED FOUR (4) DAYS IN LENGTH.
- 8 ROAD CONSTRUCTION AHEAD SIGNS MAY BE OMITTED WHEN THIS DETAIL IS USED IN CONJUNCTION WITH OTHER TRAFFIC CONTROL THAT ALREADY INCLUDES A ROAD CONSTRUCTION AHEAD SIGN.
- 9 ARTERIAL ROAD CONSTRUCTION AHEAD SIGNS SHALL BE INSTALLED ON THE LEFT SIDE OF TRAFFIC IF THE MEDIAN IS MORE THAN 10 FT WIDE.

ALL DIMENSIONS ARE IN INCHES (MILLIMETERS) UNLESS OTHERWISE SHOWN.

MODEL: Default
FILE: \\nafe\p\project\aw\benefay.com\PIV\DOT\Documents\DOT\Office\Dist\ref: \\project\1590_WB_Ramp\CADD\Draw\Design\Dist\5c.dgn

USER NAME = Monamed.Esily	DESIGNED - D.W.S.	REVISED - S.P.B._01-07
DRAWN -	REVISED - S.P.B._12-09	
PLOT SCALE = 100,0000' / in.	CHECKED -	REVISED - M.D._06-13
PLOT DATE = 10/20/2022	DATE - 02-83	REVISED - M.D._01-18

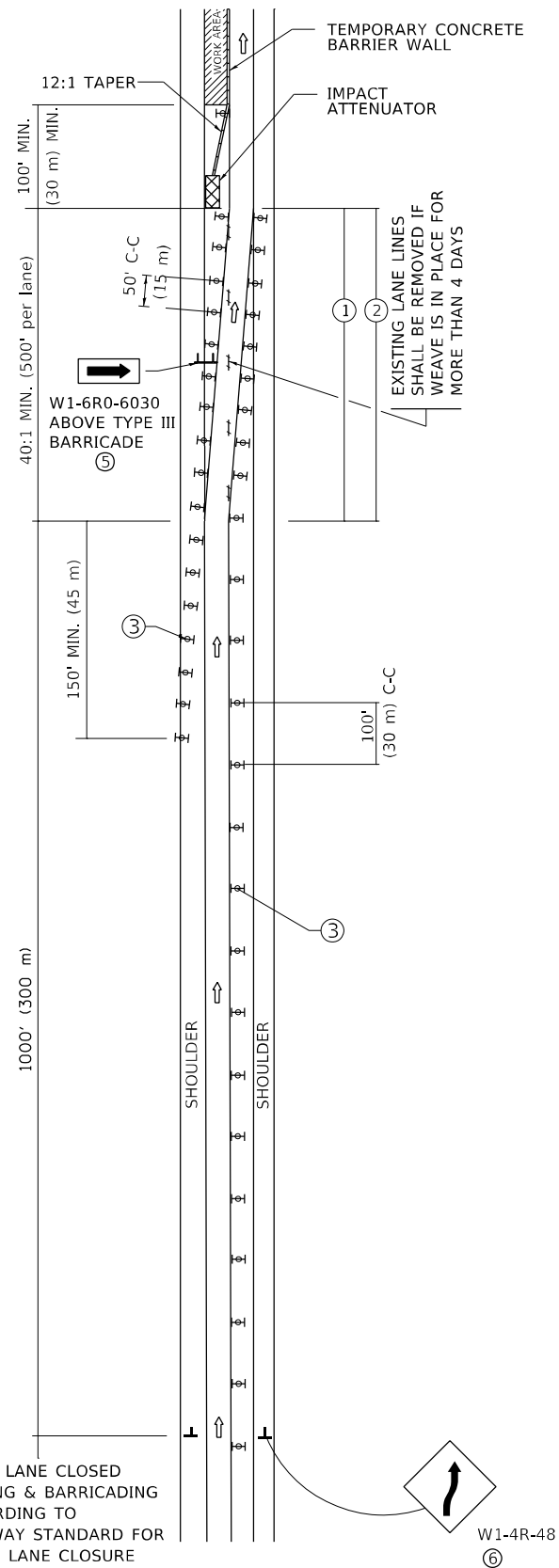
**STATE OF ILLINOIS
DEPARTMENT OF TRANSPORTATION**

**ENTRANCE_AND_EXIT_RAMP
CLOSURE_DETAILS**

SCALE: NONE SHEET 1 OF 1 SHEETS STA. TO STA.

F.A. RTE.	SECTION	COUNTY	TOTAL SHEETS	SHEET NO.
	FAI 290 22 PF	COOK	11	8
	TC-08		CONTRACT NO. 62R59	
		ILLINOIS	FED. AID PROJECT	

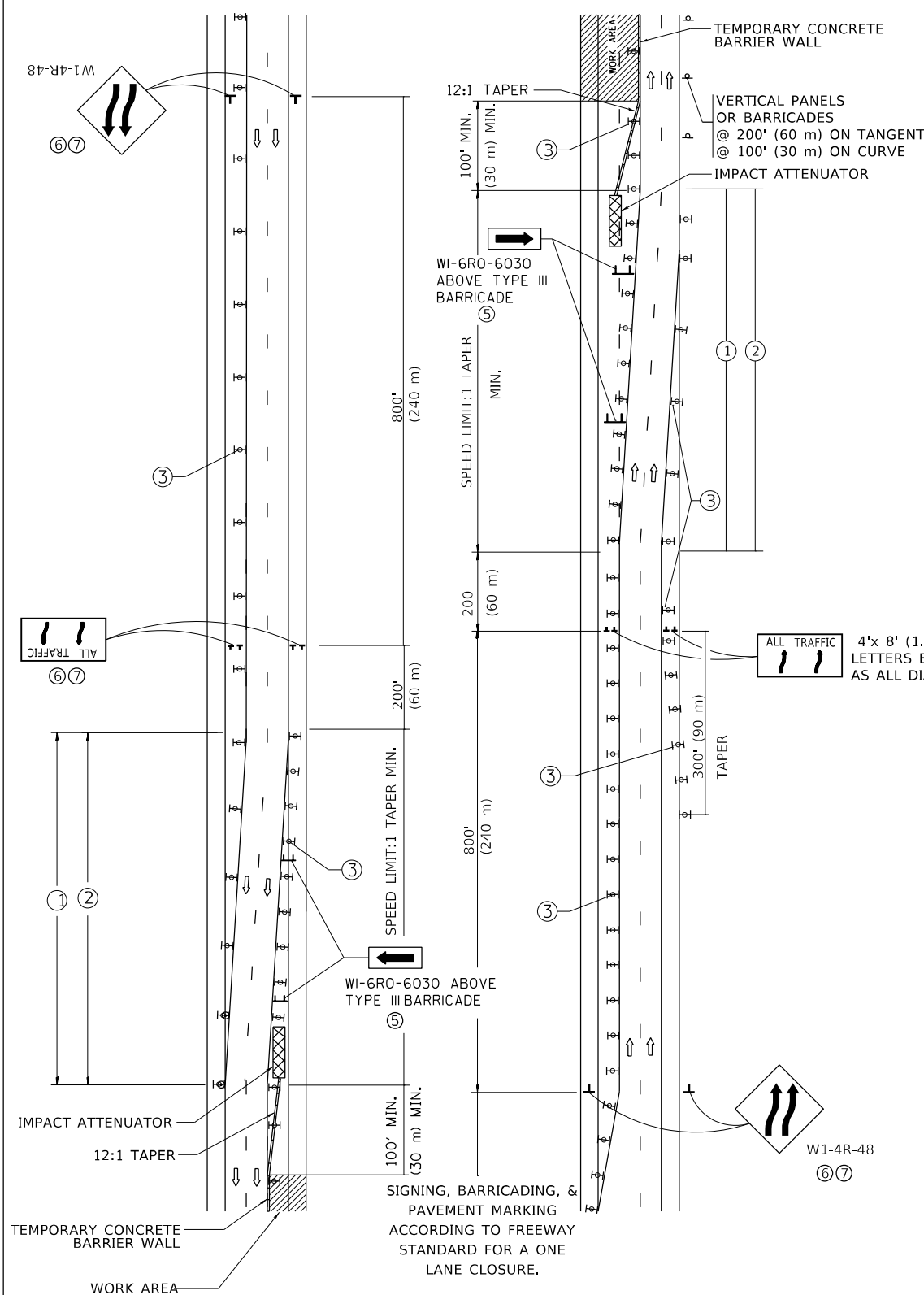
SINGLE LANE WEAVE



RIGHT LANE CLOSED SIGNING & BARRICADING ACCORDING TO FREEWAY STANDARD FOR A ONE LANE CLOSURE

W1-4R-48
⑥

MULTI-LANE WEAVE



GENERAL NOTES:

- ① EXISTING CONFLICTING PAVEMENT MARKING LINES SHALL BE REMOVED. PAVEMENT MARKING REMOVAL SHALL NOT BE REQUIRED FOR SINGLE LANE WEAVES UNDER 4 DAYS IN DURATION.
- ② CONTINUOUS REFLECTIVE TEMPORARY PAVEMENT MARKING TAPE SHALL BE PLACED THROUGHOUT THE TAPER AND FOR 300' (90 m) ALONG SIDE THE WORK AREA WHERE THE CLOSURE TIME IS GREATER THAN FOURTEEN DAYS. THE LEFT EDGE LINE SHALL BE YELLOW AND THE RIGHT EDGE LINE SHALL BE WHITE. FOR MULTI-LANE WEAVES LANE LINES SHALL BE 5 INCH, 10'-30' (3 m-9 m) SKIP DASH, WHITE.
- ③ PLASTIC DRUMS WITH STEADY BURN LIGHTS AT 50' (15 m) C-C SPACING IN TAPERS AND 100' (30 m) C-C SPACING IN TANGENTS.
- ④ ALL SIGNS SHALL BE POST MOUNTED IF THE CLOSURE TIME EXCEEDS FOUR DAYS.
- ⑤ TYPE III BARRICADES MAY BE OMITTED FOR SINGLE-LANE WEAVES UNDER 24-HOURS IN DURATION. W1-6 SIGNS WILL STILL BE REQUIRED. IF THE WIDTH OF OFFSET IS LESS THAN 6' THEN THE TYPE III BARRICADE WITH ATTACHED ARROW SIGN PANEL CAN BE ELIMINATED IN THE TAPER AREAS.
- ⑥ WHEN THE LENGTH OF THE SHIFTED SEGMENT (DISTANCE BETWEEN WEAVE POINTS) IS LESS THAN 1500', DOUBLE REVERSE CURVE SIGNS (W24-1) SHOULD BE USED INSTEAD OF THE REVERSE CURVE (W1-4) SIGNS. ARROWS ON THE 4'X8' "ALL TRAFFIC" SIGNS SHALL BE THE SAME SHAPE.
- ⑦ THE NUMBER OF ARROWS ON THESE SIGNS SHALL MATCH THE NUMBER OF LANES OPEN TO TRAFFIC.

ALL TRAFFIC 4'x 8' (1.2 m x 2.4 m); 1 (25) BORDER; 10 (250) CAPITAL LETTERS BACKGROUND SHEETING SHALL BE THE SAME AS ALL DIAMOND SHAPED CONSTRUCTION SIGNS.

SYMBOLS

- DIRECTION OF TRAFFIC
- WORK AREA
- SIGN ON PORTABLE OR PERMANENT SUPPORT
- TYPE II BARRICADE OR DRUM WITH MONO-DIRECTIONAL STEADY BURNING LIGHT
- TEMPORARY CONCRETE BARRIER WALL
- IMPACT ATTENUATOR
- W24-1-48
⑦

ALL DIMENSIONS ARE IN INCHES (MILLIMETERS) UNLESS OTHERWISE SHOWN

MODEL: Default
FILE NAME: p:\bulletect-pw-benefits.com\P\DOT\Documents\DOT Office\District: 11\projects\11-90 WB Ramp\CAD\data\Design\Diagrams.dgn

USER NAME = Monamed,Esilly	DESIGNED - D,W,S.	REVISED - J,A,F. 02-06
	DRAWN -	REVISED - S,P,B. 01-07
PLOT SCALE = 100,0000' / in.	CHECKED -	REVISED - S,P,B. 12-09
PLOT DATE = 10/20/2022	DATE - 02-87	REVISED - M,D. 06-13

STATE OF ILLINOIS
DEPARTMENT OF TRANSPORTATION

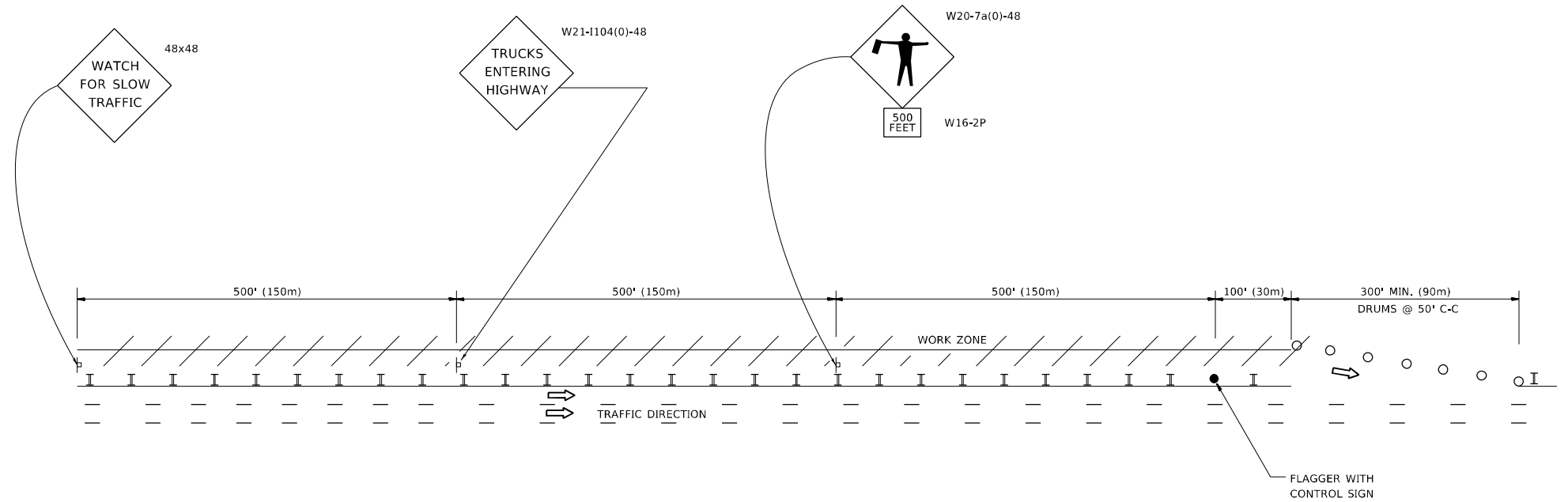
TRAFFIC CONTROL DETAILS FOR
FREEWAY SINGLE & MULTI-LANE WEAVE

SCALE: NONE SHEET 1 OF 1 SHEETS STA. TO STA.

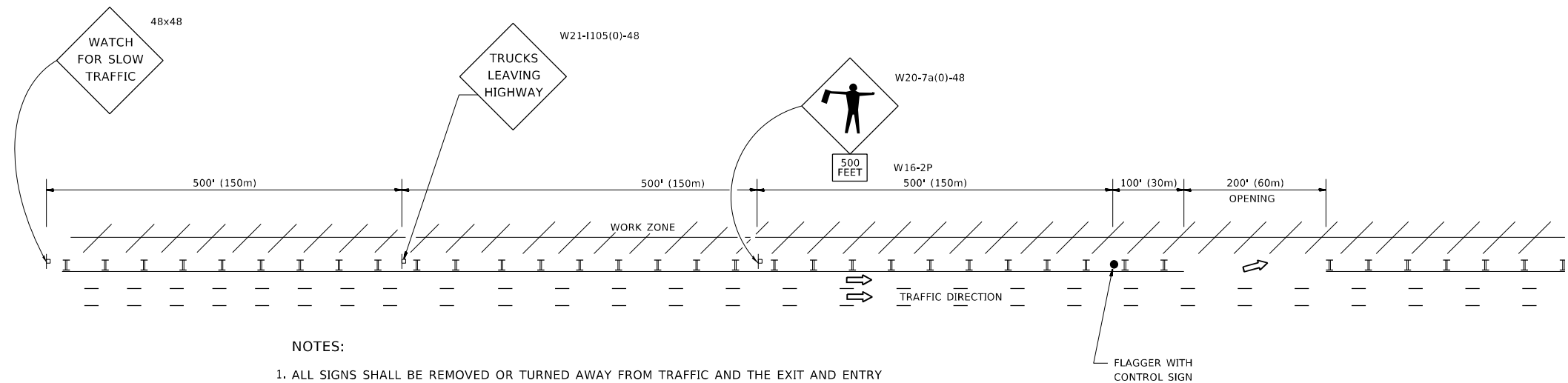
F.A. RTE.	SECTION	COUNTY	TOTAL SHEETS	SHEET NO.
	FAI 290 22 PF	COOK	11	9
	TC-09	CONTRACT NO. 62R59		
ILLINOIS FED. AID PROJECT				

SIGNING FOR FLAGGING OPERATIONS AT WORK ZONE OPENINGS

WORK ZONE EXIT OPENING



WORK ZONE ENTRY OPENING



NOTES:

1. ALL SIGNS SHALL BE REMOVED OR TURNED AWAY FROM TRAFFIC AND THE EXIT AND ENTRY OPENINGS SHALL BE CLOSED WHEN THE FLAGGING OPERATION CEASES. NON OPERATING EQUIPMENT SHALL COMPLY WITH ARTICLE 701.11
2. WORK ZONE OPENINGS SHALL BE A MINIMUM OF ONE HALF MILE APART AND A MINIMUM OF ONE QUARTER MILE FROM ALL ENTRANCE AND EXIT RAMP.
3. EXITING THE WORK ZONE AT ANY PLACE OTHER THAN AT A WORK ZONE EXIT OPENING WILL BE PROHIBITED.
4. ALL VEHICLES SHALL ENTER THE WORK ZONE AT ENTRY OPENINGS, USING THEIR TURN SIGNALS TO WARN MOTORISTS
5. FLAGGERS SHALL NOT STOP TRAFFIC OR DIRECT TRAFFIC INTO AN ADJACENT LANE.

ALL DIMENSIONS ARE IN INCHES (MILLIMETERS) UNLESS OTHERWISE SHOWN

MODEL: Default
FILE: \\na16f-pw-ibuild-pw-bea-fwy.com\P\W\DOT\Documents\DOT Office\Dir\rdet_1\Project\11-99_WB_Ramp\CADD\Draw\Design\Draw\11-99-01.dgn

USER NAME = Monamed.Esily	DESIGNED -	REVISED - J.A.F. 02-06
PLOT SCALE = 100,0000' / in.	DRAWN -	REVISED - S.P.B. 01-07
PLOT DATE = 10/20/2022	CHECKED -	REVISED - S.P.B. 12-09
	DATE -	REVISED - M.D.06-13

**STATE OF ILLINOIS
DEPARTMENT OF TRANSPORTATION**

**FREEWAY /EXPRESSWAY SIGNING FOR FLAGGING OPERATIONS
AT WORK ZONE OPENINGS ON FREEWAYS /EXPRESSWAYS**

SCALE: NONE SHEET 1 OF 1 SHEETS STA. TO STA.

F.A. RTE.	SECTION	COUNTY	TOTAL SHEETS	SHEET NO.
	FAI 290 22 PF	COOK	11	11
TC-18			CONTRACT NO. 62R59	
ILLINOIS FED. AID PROJECT				