

STATE OF ILLINOIS  
DEPARTMENT OF TRANSPORTATION

F.A.U. RTE.	SECTION	COUNTY	TOTAL SHEETS	SHEET NO.
2759	FAU 2759 22 RS	COOK	54	1
ILLINOIS CONTRACT NO. 62R80				

\*\* 51 + 1 = 52 TOTAL SHEETS  
\*\* 52 + 5 = 56 TOTAL SHEETS  
D-91-178-22

THE IMPROVEMENT IS LOCATED IN  
FOREST PARK

PROPOSED  
HIGHWAY PLANS

FAU ROUTE 2759: DES PLAINES AVENUE  
FROM MADISON STREET TO ROOSEVELT ROAD

SECTION FAU 2759 22 RS

PROJECT STP - AU80 (126)

STANDARD OVERLAY, ADA IMPROVEMENTS  
COOK COUNTY

C-91-223-22

R 12, 13 E



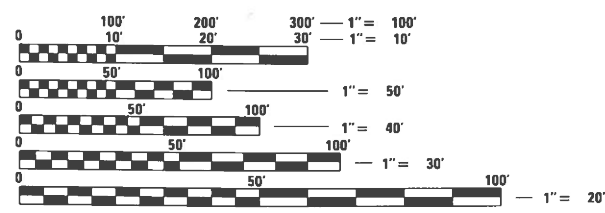
TRAFFIC DATA:

DES PLAINES AVE

STA 13+78 - 69+68  
ADT = 18700

STA 13+78 - 42+57  
POSTED SPEED LIMIT = 30 MPH

STA 42+57 - 69+68  
POSTED SPEED LIMIT = 25 MPH



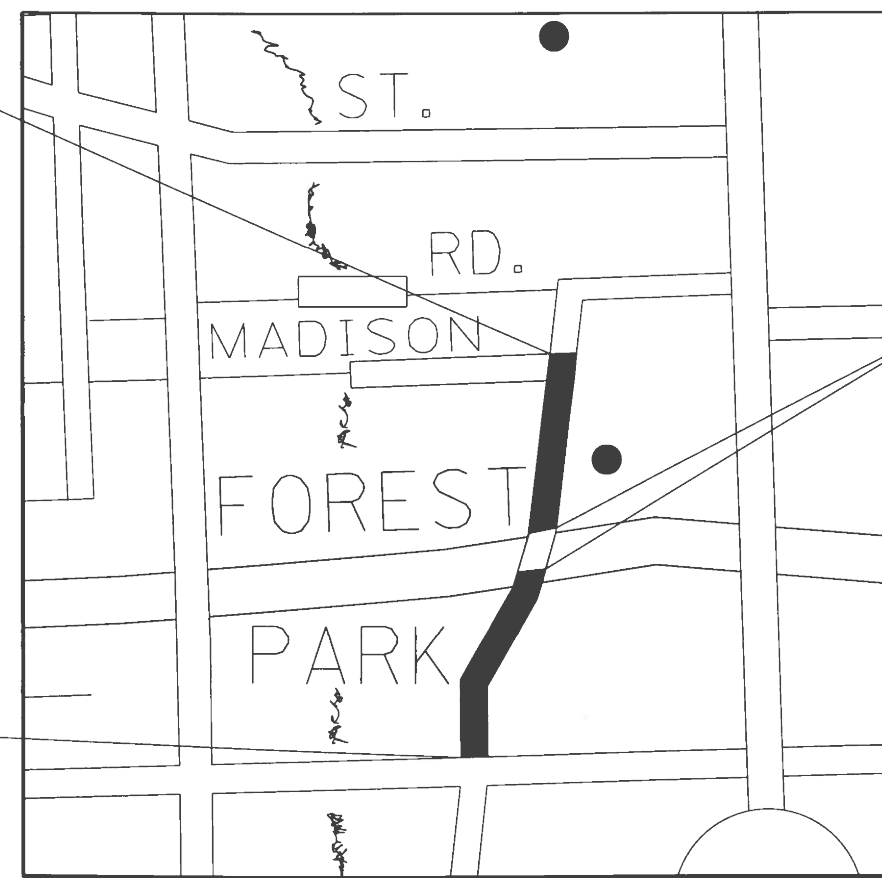
FULL SIZE PLANS HAVE BEEN PREPARED USING STANDARD ENGINEERING SCALES. REDUCED SIZED PLANS WILL NOT CONFORM TO STANDARD SCALES. IN MAKING MEASUREMENTS ON REDUCED PLANS, THE ABOVE SCALES MAY BE USED.

J.U.L.I.E.  
JOINT UTILITY LOCATION INFORMATION FOR EXCAVATORS  
1-800-892-0123  
OR 811

PROJECT ENDS  
STA 69+31

PROJECT BEGINS  
STA 14+36

T 39 N



OMISSION  
STA 45+95 - 47+89

PROJECT ENGINEER: LUKASZ POCIECHA (847) 705-4255  
PROJECT MANAGER: FAWAD AQUEEL

GROSS LENGTH = 5590 FT. = 1.04 MILE  
NET LENGTH = 5396 FT. = 1.00 MILE

CONTRACT NO. 62R80

STATE OF ILLINOIS  
DEPARTMENT OF TRANSPORTATION

SUBMITTED NOVEMBER 17 20 22  
Jose Rios CAS  
REGIONAL ENGINEER

December 9, 2022  
SEA ERS  
ENGINEER OF DESIGN AND ENVIRONMENT

December 9, 2022  
Stephen McSwain  
DIRECTOR OF HIGHWAYS PROJECT IMPLEMENTATION

PRINTED BY THE AUTHORITY  
OF THE STATE OF ILLINOIS

**INDEX OF SHEETS**

SHEET NO.	DESCRIPTION
1	COVER SHEET
2	INDEX OF SHEETS, HIGHWAY STANDARDS, AND GENERAL NOTES
3-6	SUMMARY OF QUANTITIES
7	TYPICAL SECTION
8-10	ROADWAY AND PAVEMENT MARKING PLANS
11-27	ADA RAMP DETAILS
28-32	TRAFFIC SIGNAL PLANS
33	DETAILS FOR FRAMES AND LIDS ADJUSTMENT WITH MILLING
34	PAVEMENT PATCHING FOR HMA SURFACED PAVEMENT
35	CURB AND GUTTER REMOVAL AND REPLACEMENT
36	BUTT JOINT AND HMA TAPER DETAILS
37	TRAFFIC CONTROL AND PROTECTION FOR SIDE ROADS, INTERSECTIONS, AND DRIVEWAYS (TC-10)
38	TYPICAL APPLICATIONS RAISED REFLECTIVE PAVEMENT MARKERS (SNOW-PLOW RESISTANT) (TC-11)
39	DISTRICT ONE TYPICAL PAVEMENT MARKINGS (TC-13)
40	TRAFFIC CONTROL AND PROTECTION AT TURN BAYS (TO REMAIN OPEN TO TRAFFIC) (TC-14)
41	SHORT TERM PAVEMENT MARKING LETTERS AND SYMBOLS (TC-16)
42	ARTERIAL ROAD INFORMATION SIGN (TC-22)
42A	DRIVEWAY ENTRANCE SIGNING (TC-26)
42B	MAST ARM MOUNTED STREET NAME SIGNS
43-50	DISTRICT ONE STANDARD TRAFFIC SIGNAL DESIGN DETAILS (TS-05)
51	CRACK AND JOINT SEALING DETAIL (PD-11)

**HIGHWAY STANDARDS**

STANDARD NO.	DESCRIPTION
000001-08	STANDARD SYMBOLS, ABBREVIATIONS AND PATTERNS
424001-11	PERPENDICULAR CURB RAMPS FOR SIDEWALKS
424011-04	CORNER PARALLEL RAMPS FOR SIDEWALKS
424021-06	DEPRESSED CORNER RAMPS FOR SIDEWALKS
442201-03	CLASS C AND D PATCHES
604001-05	FRAMES AND LIDS TYPE 1
604056-04	FRAME AND GRATE TYPE 11
604091-05	FRAME AND GRATE TYPE 24
606001-07	CONCRETE CURB TYPE B AND COMBINATION CONCRETE CURB AND GUTTER
701001-02	OFF ROAD OPERATIONS, 2L, 2W, MORE THAN 15' (4.5m) AWAY
701006-05	OFF ROAD OPERATIONS, 2L, 2W, 15' (4.5m) TO 24" (600mm) FROM PAVEMENT EDGE
701011-04	OFF ROAD MOVING OPERATIONS, 2L, 2W, DAILY
701101-05	OFF-RD OPERATIONS, MULTILANE, 15' (4.5 M) TO 24" (600 MM) FROM PAVEMENT EDGE
701106-02	OFF-RD OPERATIONS, MULTILANE, MORE THAN 15' (4.5 M) AWAY
701301-04	LANE CLOSURE, 2L, 2W, SHORT TIME OPERATIONS
701501-06	URBAN LANE CLOSURE, 2L, 2W, UNDIVIDED
701427-05	LANE CLOSURE, MULTIPLANE, INTERMITTENT OR MOVING OPER. FOR SPEED < OR = 40 MPH
701601-09	URBAN LANE CLOSURE, MULTILANE, 1W OR 2W WITH NONTRAVERSABLE MEDIAN
701606-10	URBAN SINGLE LANE CLOSURE, MULTILANE, 2W WITH MOUNTABLE MEDIAN
701701-10	URBAN LANE CLOSURE, MULTILANE INTERSECTION
701801-06	SIDEWALK, CORNER OR CROSSWALK CLOSURE
701901-08	TRAFFIC CONTROL DEVICES
780001-05	TYPICAL PAVEMENT MARKINGS
886001-01	DETECTOR LOOP INSTALLATIONS

**GENERAL NOTES**

- BEFORE STARTING ANY EXCAVATION, THE CONTRACTOR SHALL CALL "J.U.L.I.E." AT (800) 892-0123 OR 811 FOR FIELD LOCATIONS OF BURIED ELECTRIC, TELEPHONE AND GAS UTILITIES. 48 HOUR NOTIFICATION IS REQUIRED.
- THE CONTRACTOR SHALL COORDINATE CONSTRUCTION ACTIVITIES WITH UTILITY COMPANIES AND FOREST PARK.
- THE CONTRACTOR SHALL CONTACT THE DISTRICT ONE TRAFFIC CONTROL SUPERVISOR AT KAPLANA.KANNA-HOSADURGA@ILLINOIS.GOV A MINIMUM OF 72 HOURS IN ADVANCE OF BEGINNING WORK.
- THE CONTRACTOR WILL NOT BE ALLOWED TO SET UP A YARD OR FIELD OFFICE ON STATE PROPERTY WITHOUT WRITTEN PERMISSION FROM THE DEPARTMENT.
- THE RESIDENT ENGINEER SHALL CONTACT EMAD ALHUSSEINI, AREA TRAFFIC FIELD ENGINEER, VIA EMAIL AT EMAD.ALHUSSEINI@ILLINOIS.GOV. A MINIMUM OF 2 WEEKS PRIOR TO PLACEMENT OF PERMANENT PAVEMENT MARKINGS.
- ANY PAVEMENT MARKINGS AND RAISED REFLECTIVE PAVEMENT MARKERS OBLITERATED BY MILLING AND RESURFACING OPERATIONS ON SIDE STREETS AND ENTRANCES SHALL BE REPLACED AND PAID FOR IN KIND.
- ALL DAMAGE TO EXISTING PAVEMENT MARKINGS OR RAISED REFLECTIVE PAVEMENT MARKERS OUTSIDE THE REMOVAL LINE SHOWN ON THE PLANS SHALL BE REPLACED AT NO ADDITIONAL COST TO THE DEPARTMENT.
- BEFORE BEGINNING ANY WORK, THE CONTRACTOR SHALL RETAIN AND RECORD FOR FUTURE REFERENCE, ALL EXISTING PAVEMENT MARKING LINES (AND RAISED REFLECTIVE PAVEMENT MARKERS) IN ORDER THAT THESE LOCATIONS CAN BE RE-ESTABLISHED FOR STRIPING. EXACT LOCATIONS OF ALL PAVEMENT MARKINGS SHALL BE AS DIRECTED BY THE ENGINEER.
- ALL FINAL PAVEMENT PATCHING LOCATIONS WILL BE DETERMINED IN THE FIELD BY THE RESIDENT ENGINEER. AREAS OF SEVERE RUTTING SHALL BE DETERMINED BY ENGINEER BEFORE MILING.
- LOCATION OF COMBINATION CONCRETE CURB AND GUTTER REMOVAL AND REPLACEMENT WILL BE DETERMINED IN THE FIELD BY THE RESIDENT ENGINEER.
- DRAINAGE ADJUSTMENT OR RECONSTRUCTION LOCATIONS WILL BE DETERMINED IN THE FIELD BY THE RESIDENT ENGINEER.
- IT SHALL BE THE CONTRACTOR'S RESPONSIBILITY TO VERIFY ALL DIMENSIONS AND CONDITIONS EXISTING IN THE FIELD PRIOR TO CONSTRUCTION AND ORDERING OF MATERIALS.
- FRAMES AND GRATES ADJUSTMENT OF PRIVATE UTILITIES WITHIN THE LIMITS OF THE IMPROVEMENTS SHALL BE DONE BY THEIR RESPECTIVE OWNERS AND ARE NOT PART OF THIS CONTRACT.
- THE CONTRACTOR SHALL BE REQUIRED TO PROVIDE ACCESS TO ABUTTING PROPERTY AT ALL TIMES DURING THE CONSTRUCTION OF THIS PROJECT.
- DO NOT SCALE PLANS FOR CONSTRUCTION DIMENSIONS.
- PAVEMENT MARKING TAPE, TYPE III SHALL BE USED FOR SHORT TERM PAVEMENT MARKINGS ON ALL FINAL SURFACES.
- WHEN THE MILLED PAVEMENT IS OPEN TO TRAFFIC THE MAXIMUM GRADE DIFFERENTIAL BETWEEN PASSES OF THE MILLING MACHINE SHALL NOT EXCEED 1/2 INCHES WHERE THE SPEED LIMIT IS 40 MPH OR LESS AND 1 INCH WHERE THE SPEED LIMIT IS GREATER THAN 40 MPH WITH WRITTEN APPROVAL OF THE ENGINEER, A MAXIMUM GRADE DIFFERENTIAL OF 3 INCHES MAY BE ALLOWED IF THE EDGE OF THE MILLING IS SLOPED A MINIMUM 1:3 (V:H).
- BUTT JOINTS WILL BE INSTALLED AT THE ENDS OF ALL RESURFACING (WHERE RESURFACING MEETS EXISTING PAVEMENT) ACCORDING TO THE "BUTT JOINT AND HOT-MIX ASPHALT TAPER DETAILS" SHEET INCLUDED IN THE PLANS, UNLESS OTHERWISE SPECIFIED.
- THE CONTRACTOR SHALL MAINTAIN PEDESTRIAN ACCESS AT ALL TIMES DURING CONSTRUCTION.
- ALL CROSSWALK WILL BE 6' IN WIDTH AND LOCATION OF STOP BARS WILL BE MINIMUM 4' FROM THE CROSSWALK.
- 10 FEET (3 METERS) TRANSITION SHALL BE USED TO MATCH PROPOSED CURB AND GUTTER AND MEDIAN ITEMS OF WORK TO EXISTING CURBS AND GUTTERS AND MEDIANS IN THE FIELD, UNLESS OTHERWISE SHOWN, THE TRANSITION SHALL BE PAID FOR AT THE CONTRACT UNIT PRICE FOR THE PROPOSED ITEMS OF WORK SPECIFIED.
- ALL MILLED SURFACES SHALL BE AT A UNIFORM CROSS SLOPE PER LANE AND FREE OF RIDGES BETWEEN PASSES. ANY DEVIATIONS SHALL BE CORRECTED AT NO COST TO THE DEPARTMENT.



REVISD ENTIRE SHEET 1/4/2022

MODEL: Default  
FILE: I:\Users\paul@dot-pw-bentley.com\PI\DOT\Documents\DOT Offices\District 1\Projects\Des Plaines Ave\CAD\Drawings\Design\Desplaines-sht-general.dgn

USER NAME = sher.kh	DESIGNED -	REVISED - 01/03/2023 SK
	DRAWN -	REVISED -
PLOT SCALE = 100.0000' / in.	CHECKED -	REVISED -
PLOT DATE = 12/16/2022	DATE -	REVISED -

**STATE OF ILLINOIS  
DEPARTMENT OF TRANSPORTATION**

**INDEX OF SHEETS, STATE STANDARDS & GENERAL NOTES  
DES PLAINES AVE (ROOSEVELT RD. TO MADISON ST.)**

SCALE: SHEET OF SHEETS STA. TO STA.

FAU RTE.	SECTION	COUNTY	TOTAL SHEETS	SHEET NO.
2759	FAU 2759 22 RS	COOK	51	2
			CONTRACT NO. 62R80	
			ILLINOIS FED. AID PROJECT	

SUMMARY OF QUANTITIES			CONSTRUCTION TYPE CODE			
CODE NO	ITEM	UNIT	TOTAL QUANTITIES URBAN	ROADWAY 80% FED 20% STATE 0005	100% STATE 0005	TRAFFIC SIGNAL 80% FED 20% STATE 0021
* 78003137	PREFORMED PLASTIC PAVEMENT MARKING, TYPE B - LINE 7"	FOOT	388	388		
* 78009004	MODIFIED URETHANE PAVEMENT MARKING - LINE 4"	FOOT	388	388		
* 78009006	MODIFIED URETHANE PAVEMENT MARKING - LINE 6"	FOOT	194	194		
* 78011040	GROOVING FOR RECESSED PAVEMENT MARKING 8"	FOOT	388	388		
* 78100100	RAISED REFLECTIVE PAVEMENT MARKER	EACH	460	460		
78300200	RAISED REFLECTIVE PAVEMENT MARKER REMOVAL	EACH	460	460		
78300202	PAVEMENT MARKING REMOVAL - WATER BLASTING	SO FT	8000	8000		
* 81028200	UNDERGROUND CONDUIT, GALVANIZED STEEL, 2" DIA.	FOOT	237 <del>140</del>		237 <del>140</del>	⚠
* 85000200	MAINTENANCE OF EXISTING TRAFFIC SIGNAL INSTALLATION	EACH	3		3	
* 87301215	ELECTRIC CABLE IN CONDUIT, SIGNAL NO. 14 2C	FOOT	1755 <del>300</del>		1755 <del>300</del>	⚠
* 87301225	ELECTRIC CABLE IN CONDUIT, SIGNAL NO. 14 3C	FOOT	448 <del>100</del>		448 <del>100</del>	⚠

SUMMARY OF QUANTITIES			CONSTRUCTION TYPE CODE			
CODE NO	ITEM	UNIT	TOTAL QUANTITIES URBAN	ROADWAY 80% FED 20% STATE 0005	100% STATE 0005	TRAFFIC SIGNAL 80% FED 20% STATE 0021
* 87301900	ELECTRIC CABLE IN CONDUIT, EQUIPMENT GROUNDING CONDUCTOR, NO. 6 1C	FOOT	259 <del>300</del>			259 <del>300</del>
* 87900200	DRILL EXISTING HANDHOLE	EACH	14 <del>7</del>			14 <del>7</del>
* 88102717	PEDESTRIAN SIGNAL HEAD, LED, 1-FACE, BRACKET MOUNTED WITH COUNTDOWN TIMER	EACH	4 <del>2</del>			4 <del>2</del>
* 88600100	DETECTOR LOOP, TYPE I	FOOT	1907			1907
* 88600600	DETECTOR LOOP REPLACEMENT	FOOT	1751 <del>150</del>			1751 <del>150</del>
* 89502200	MODIFY EXISTING CONTROLLER	EACH	3			3
* 89502375	REMOVE EXISTING TRAFFIC SIGNAL EQUIPMENT	EACH	3			3
* 89502376	REBUILD EXISTING HANDHOLE	EACH	4			4
X0320050	CONSTRUCTION LAYOUT (SPECIAL)	L SUM	1	1		
* X0327149	RELOCATE BENCH	EACH	2	2		
* X1400367	PEDESTRIAN SIGNAL POST, 10 FT.	EACH	3 <del>1</del>			3 <del>1</del>
* X1400378	PEDESTRIAN SIGNAL POST, 5 FT.	EACH	11 <del>6</del>			11 <del>6</del>
X4400501	COMBINATION CURB AND GUTTER REMOVAL AND REPLACEMENT LESS THAN OR EQUAL TO 10 FEET	FOOT	130	130		

\* = SPECIALTY ITEMS

⚠ REVISED SHEET 1/4/2022

SUMMARY OF QUANTITIES				CONSTRUCTION TYPE CODE							SUMMARY OF QUANTITIES				CONSTRUCTION TYPE CODE									
CODE NO	ITEM	UNIT	TOTAL QUANTITIES URBAN	ROADWAY 80% FED 20% STATE 0005	100% STATE 0005	TRAFFIC SIGNAL 80% FED 20% STATE 0021					CODE NO	ITEM	UNIT	TOTAL QUANTITIES URBAN	ROADWAY 80% FED 20% STATE 0005	100% STATE 0005	TRAFFIC SIGNAL 80% FED 20% STATE 0021							
X4400503	COMBINATION CURB AND GUTTER REMOVAL AND REPLACEMENT GREATER THAN 10 FEET	FOOT	469	469																				
* X5537800	STORM SEWERS TO BE CLEANED 12"	FOOT	580		580																			
* X6030310	FRAMES AND LIDS TO BE ADJUSTED (SPECIAL)	EACH	65	65																				
X6700407	ENGINEER'S FIELD OFFICE, TYPE A (D1)	CAL MO	12	12																				
X8760200	ACCESSIBLE PEDESTRIAN SIGNALS	EACH	18			18																		
X8780012	CONCRETE FOUNDATION, TYPE A 12-INCH DIAMETER	FOOT	56			56																		
Z0018500	DRAINAGE STRUCTURES TO BE CLEANED	EACH	58		58																			
Z0030850	TEMPORARY INFORMATION SIGNING	SO FT	103	103																				
Z0048665	RAILROAD PROTECTIVE LIABILITY INSURANCE	L SUM	1	1																				
Z0033044	RE-OPTIMIZE TRAFFIC SIGNAL SYSTEM LEVEL 1	EACH	3			3																		
Ø Z0076600	TRAINEES	HOURS	500	500																				
Ø Z0076604	TRAINEES - TRAINING PROGRAM GRADUATE	HOURS	500	500																				

\* = SPECIALTY ITEMS

REVISSED SHEET 1/4/2022 Ø 0042

FILE NAME =	USER NAME = sher.khan	DESIGNED -	REVISED -
		REVISD -	REVISD -
PLOT SCALE = 100,0000' / 1" =	CHECKED -	REVISD -	REVISD -
PLOT DATE = 11/21/2022	DATE -	REVISD -	REVISD -

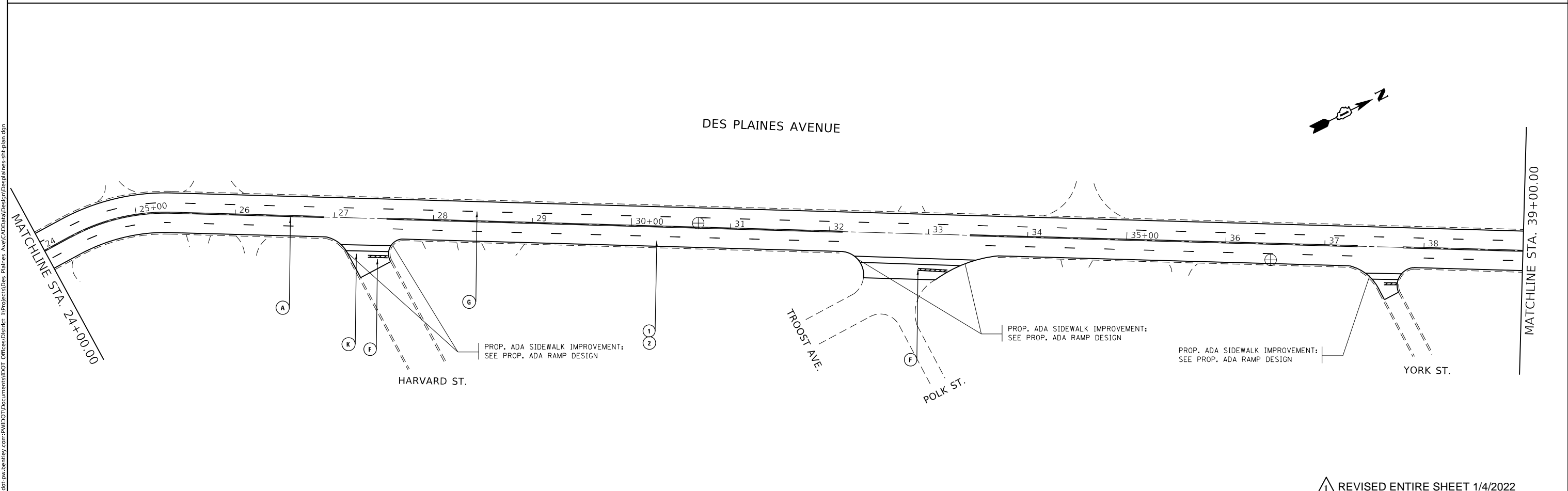
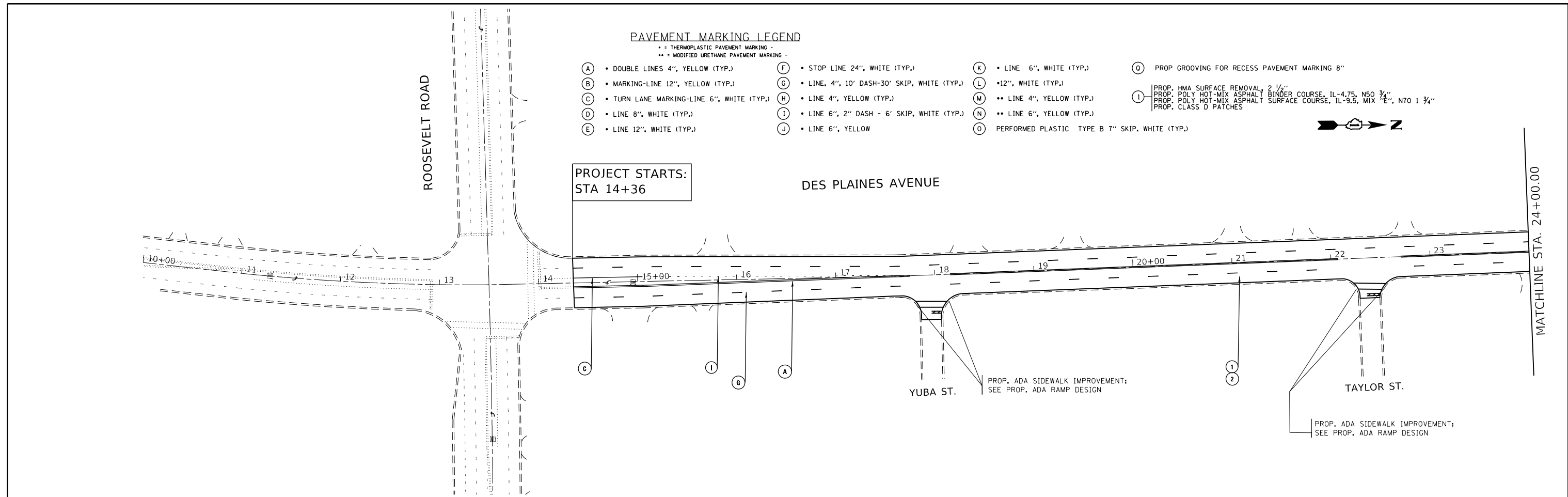
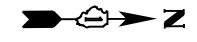
**STATE OF ILLINOIS  
DEPARTMENT OF TRANSPORTATION**

<b>DESPLAINES AVE (MADISON ST TO ROOSEVELT RD)</b>		
<b>SUMMARY OF QUANTITIES</b>		
SCALE:	SHEET NO. OF SHEETS	STA. TO STA.

F.A.U. RTE. 2759	SECTION FAU 2759 22 RS	COUNTY COOK	TOTAL SHEETS 51	SHEET NO. 6
CONTRACT NO. 62R80				
FED. ROAD DIST. NO. 1   ILLINOIS   FED. AID PROJECT				

**PAVEMENT MARKING LEGEND**

- = THERMOPLASTIC PAVEMENT MARKING -
- = MODIFIED URETHANE PAVEMENT MARKING -
- (A) • DOUBLE LINES 4", YELLOW (TYP.)
- (B) • MARKING-LINE 12", YELLOW (TYP.)
- (C) • TURN LANE MARKING-LINE 6", WHITE (TYP.)
- (D) • LINE 8", WHITE (TYP.)
- (E) • LINE 12", WHITE (TYP.)
- (F) • STOP LINE 24", WHITE (TYP.)
- (G) • LINE, 4", 10' DASH-30' SKIP, WHITE (TYP.)
- (H) • LINE 4", YELLOW (TYP.)
- (I) • LINE 6", 2" DASH - 6' SKIP, WHITE (TYP.)
- (J) • LINE 6", YELLOW
- (K) • LINE 6", WHITE (TYP.)
- (L) • 12", WHITE (TYP.)
- (M) •• LINE 4", YELLOW (TYP.)
- (N) •• LINE 6", YELLOW (TYP.)
- (O) PERFORMED PLASTIC TYPE B 7" SKIP, WHITE (TYP.)
- (1) PROP GROOVING FOR RECESS PAVEMENT MARKING 8"
- (2) PROP. HMA SURFACE REMOVAL, 2 1/2" BINDER COURSE, IL-4.75, N50 3/4"
- (3) PROP. POLY HOT-MIX ASPHALT SURFACE COURSE, IL-9.5, MIX "E", N70 1 3/4"
- (4) PROP. CLASS D PATCHES



REVISD ENTIRE SHEET 1/4/2022

MODEL: Default  
 FILE: h:\m\c:\paw\ulidact-paw\benefit\com\p\w\id\Documents\DOT Office\District 1\Projects\Des Plaines Ave\CADD\Bldg\Design\DesPlaines-rtt-gplan.dgn

USER NAME = sher,khan	DESIGNED -	REVISED - 01/03/2023 SK
PLOT SCALE = 100.0000' / in.	DRAWN -	REVISED -
PLOT DATE = 1/3/2023	CHECKED -	REVISED -
	DATE -	REVISED -

**STATE OF ILLINOIS  
DEPARTMENT OF TRANSPORTATION**

**ROADWAY PLAN  
DES PLAINES AVE (MADISON ST TO ROOSEVELT RD)**

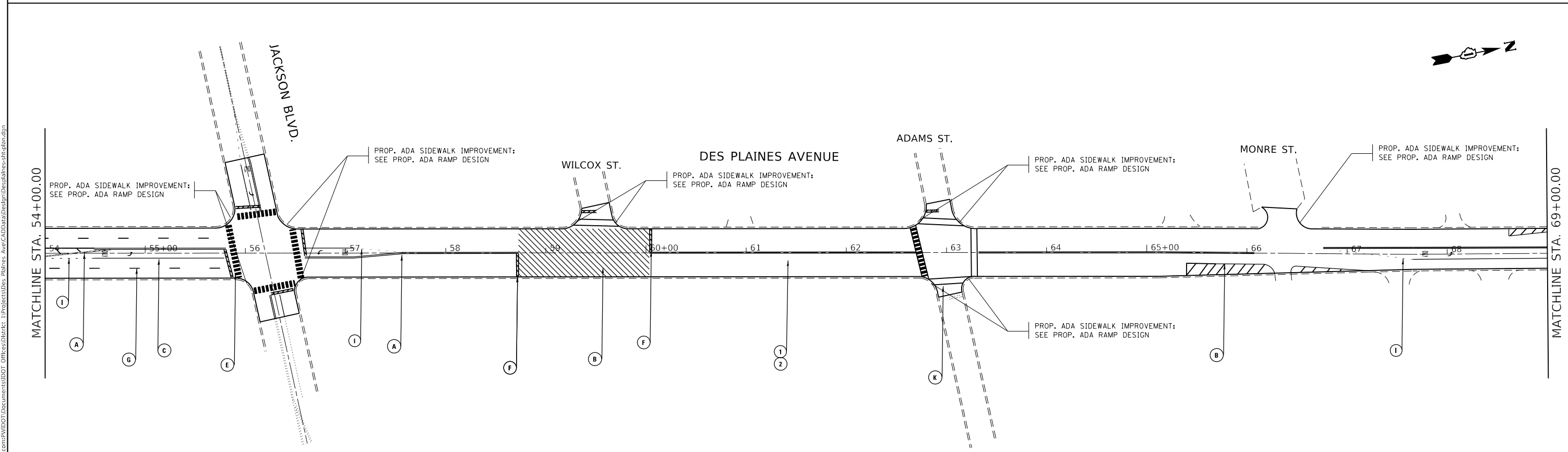
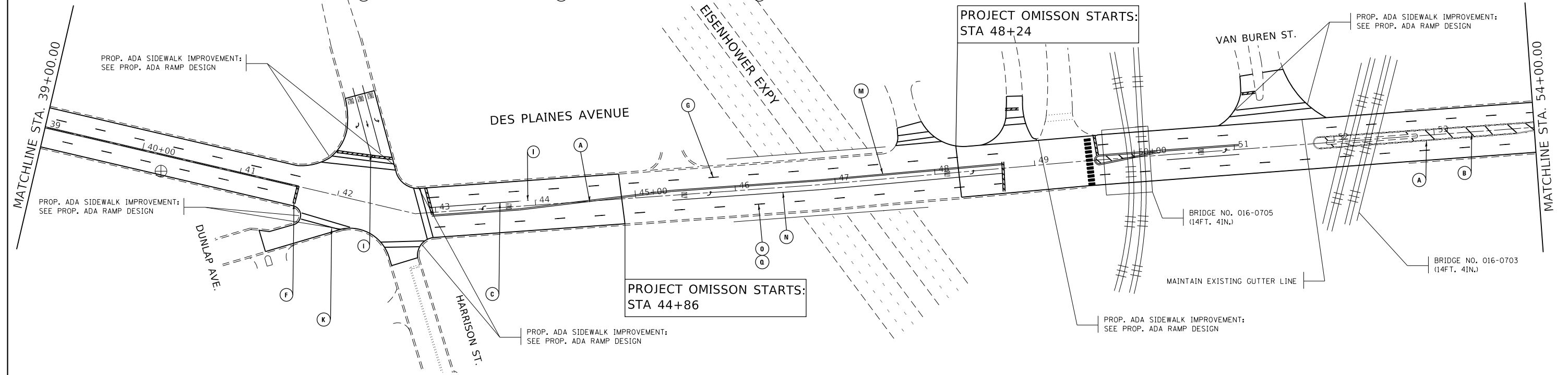
SCALE: 1"=50'    SHEET    OF    SHEETS    STA.    TO STA.

F.A.U. RTE.	SECTION	COUNTY	TOTAL SHEETS	SHEET NO.
2759	FAU 2759 22 RS	COOK	51	8
CONTRACT NO. 62R80				
ILLINOIS FED. AID PROJECT				

**PAVEMENT MARKING LEGEND**

- THERMOPLASTIC PAVEMENT MARKING -
- MODIFIED URETHANE PAVEMENT MARKING -
- (A) • DOUBLE LINES 4", YELLOW (TYP.)
- (B) • MARKING-LINE 12", YELLOW (TYP.)
- (C) • TURN LANE MARKING-LINE 6", WHITE (TYP.)
- (D) • LINE 8", WHITE (TYP.)
- (E) • LINE 12", WHITE (TYP.)
- (F) • STOP LINE 24", WHITE (TYP.)
- (G) • LINE, 4", 10' DASH-30' SKIP, WHITE (TYP.)
- (H) • LINE 4", YELLOW (TYP.)
- (I) • LINE 6", 2" DASH - 6' SKIP, WHITE (TYP.)
- (J) • LINE 6", YELLOW
- (K) • LINE 6", WHITE (TYP.)
- (L) • 12", WHITE (TYP.)
- (M) • LINE 4", YELLOW (TYP.)
- (N) • LINE 6", YELLOW (TYP.)
- (O) PERFORMED PLASTIC TYPE B 7" SKIP, WHITE (TYP.)
- (P) PROP GROOVING FOR RECESS PAVEMENT MARKING 8"
- (Q) PROP. HMA SURFACE REMOVAL, 2 1/2"
- (R) PROP. POLY HOT-MIX ASPHALT BINDER COURSE, IL-4.75, N50 3/4"
- (S) PROP. POLY HOT-MIX ASPHALT SURFACE COURSE, IL-9.5, MIX "E", N70 1 3/4"
- (T) PROP. CLASS D PATCHES

•NOTE:  
- BRIDGES MUST MAINTAIN EXISTING VERTICAL CLEARANCE



▲ REVISED ENTIRE SHEET 1/4/2022

MODEL: Default  
 FILE: \\saw-bentley.com\p\11001\Documents\DOT Office\Bharkat\_1\Projects\Des Plaines Ave\CADD\Bldg\Design\DesPlaines-rtb-splm.dgn

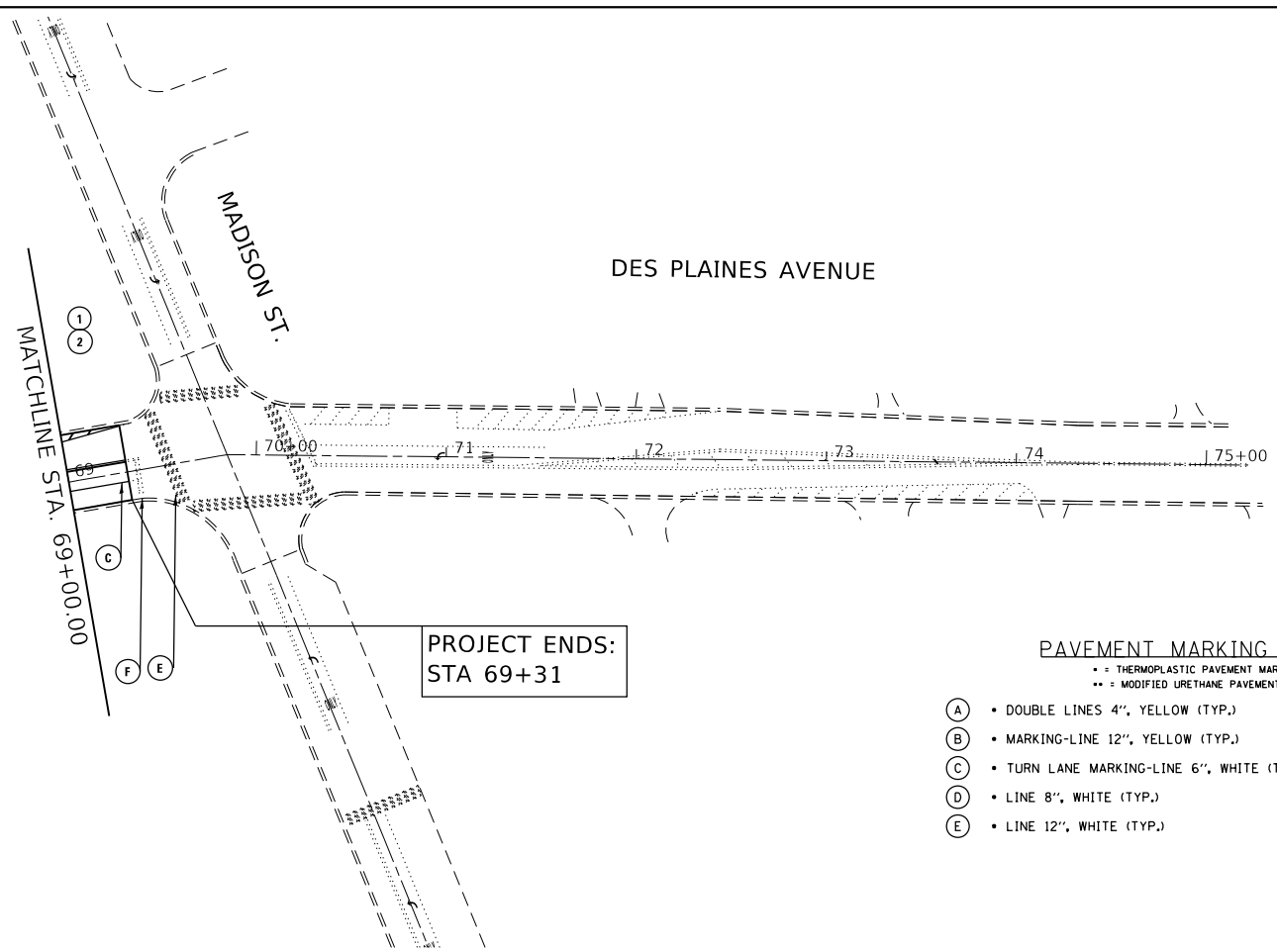
USER NAME = sher,khan	DESIGNED -	REVISED - 01/03/2023 SK
	DRAWN -	REVISED -
PLOT SCALE = 100,0000' / in.	CHECKED -	REVISED -
PLOT DATE = 1/3/2023	DATE -	REVISED -

**STATE OF ILLINOIS  
DEPARTMENT OF TRANSPORTATION**

**ROADWAY PLAN  
DES PLAINES AVE (MADISON ST TO ROOSEVELT RD)**

SCALE: 1"=50' SHEET OF SHEETS STA. TO STA.

F.A.U. RTE.	SECTION	COUNTY	TOTAL SHEETS	SHEET NO.
2759	FAU 2759 22 RS	COOK	51	9
CONTRACT NO. 62R80				
ILLINOIS FED. AID PROJECT				



PROJECT ENDS:  
STA 69+31

**PAVEMENT MARKING LEGEND**

- = THERMOPLASTIC PAVEMENT MARKING -
- = MODIFIED URETHANE PAVEMENT MARKING -
- (A) • DOUBLE LINES 4", YELLOW (TYP.)
- (B) • MARKING-LINE 12", YELLOW (TYP.)
- (C) • TURN LANE MARKING-LINE 6", WHITE (TYP.)
- (D) • LINE 8", WHITE (TYP.)
- (E) • LINE 12", WHITE (TYP.)
- (F) • STOP LINE 24", WHITE (TYP.)
- (G) • LINE, 4", 10' DASH-30' SKIP, WHITE (TYP.)
- (H) • LINE 4", YELLOW (TYP.)
- (I) • LINE 6", 2" DASH - 6' SKIP, WHITE (TYP.)
- (J) • LINE 6", YELLOW
- (K) • LINE 6", WHITE (TYP.)
- (L) • 12", WHITE (TYP.)
- (M) •• LINE 4", YELLOW (TYP.)
- (N) •• LINE 6", YELLOW (TYP.)
- (O) PERFORMED PLASTIC TYPE B 7" SKIP, WHITE (TYP.)
- (O) PROP GROOVING FOR RECESS PAVEMENT MARKING 8"
- (I) PROP. HMA SURFACE REMOVAL, 2 1/4"  
PROP. POLY HOT-MIX ASPHALT BINDER COURSE, IL-4.75, N50 3/4"  
PROP. POLY HOT-MIX ASPHALT SURFACE COURSE, IL-9.5, MIX 7/8", N70 1 3/4"  
PROP. CLASS D PATCHES



MODEL: Default  
 FILE: h:\mhc\_pav\illsc-paw\benetley.com\PI\DOT\Documents\DOT\_Offices\DHrdct\_1\Projects\Des\_Plaines\_Ave\CADD\ba\Design\DesPlaines-rtb-spln.dgn

REVISED ENTIRE SHEET 1/4/2022

USER NAME = sher,khan	DESIGNED -	REVISED - 01/03/2023 SK
	DRAWN -	REVISED -
PLOT SCALE = 100,0000 ' / in.	CHECKED -	REVISED -
PLOT DATE = 1/3/2023	DATE -	REVISED -

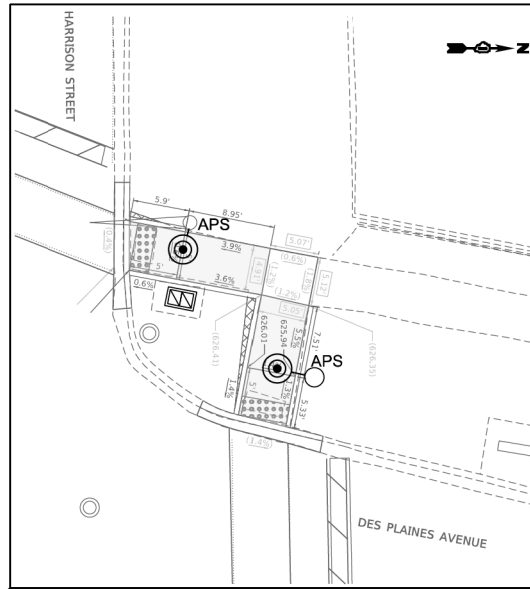
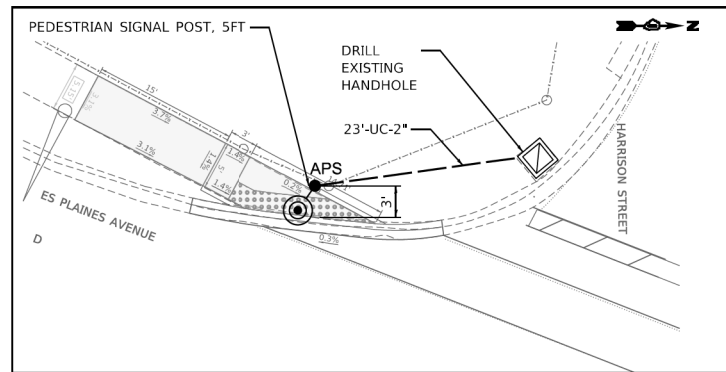
**STATE OF ILLINOIS  
DEPARTMENT OF TRANSPORTATION**

**ROADWAY PLAN  
DES PLAINES AVE (MADISON ST TO ROOSEVELT RD)**

SCALE: 1"=50' SHEET OF SHEETS STA. TO STA.

F.A.U. RTE.	SECTION	COUNTY	TOTAL SHEETS	SHEET NO.
2759	FAU 2759 22 RS	COOK	1	1
CONTRACT NO. 62R80				
ILLINOIS FED. AID PROJECT				

1



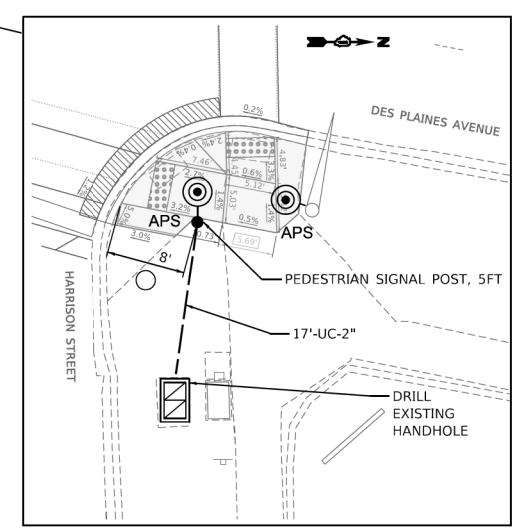
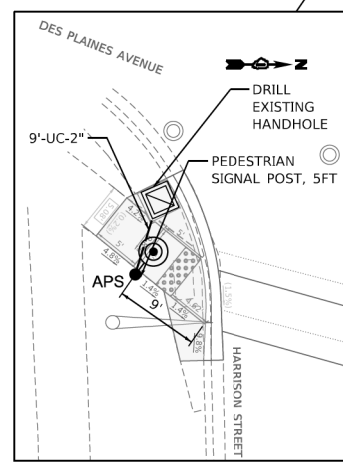
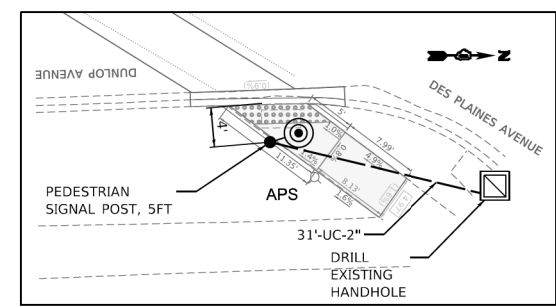
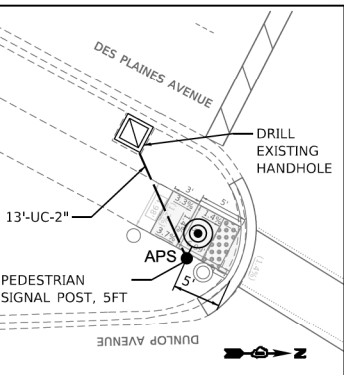
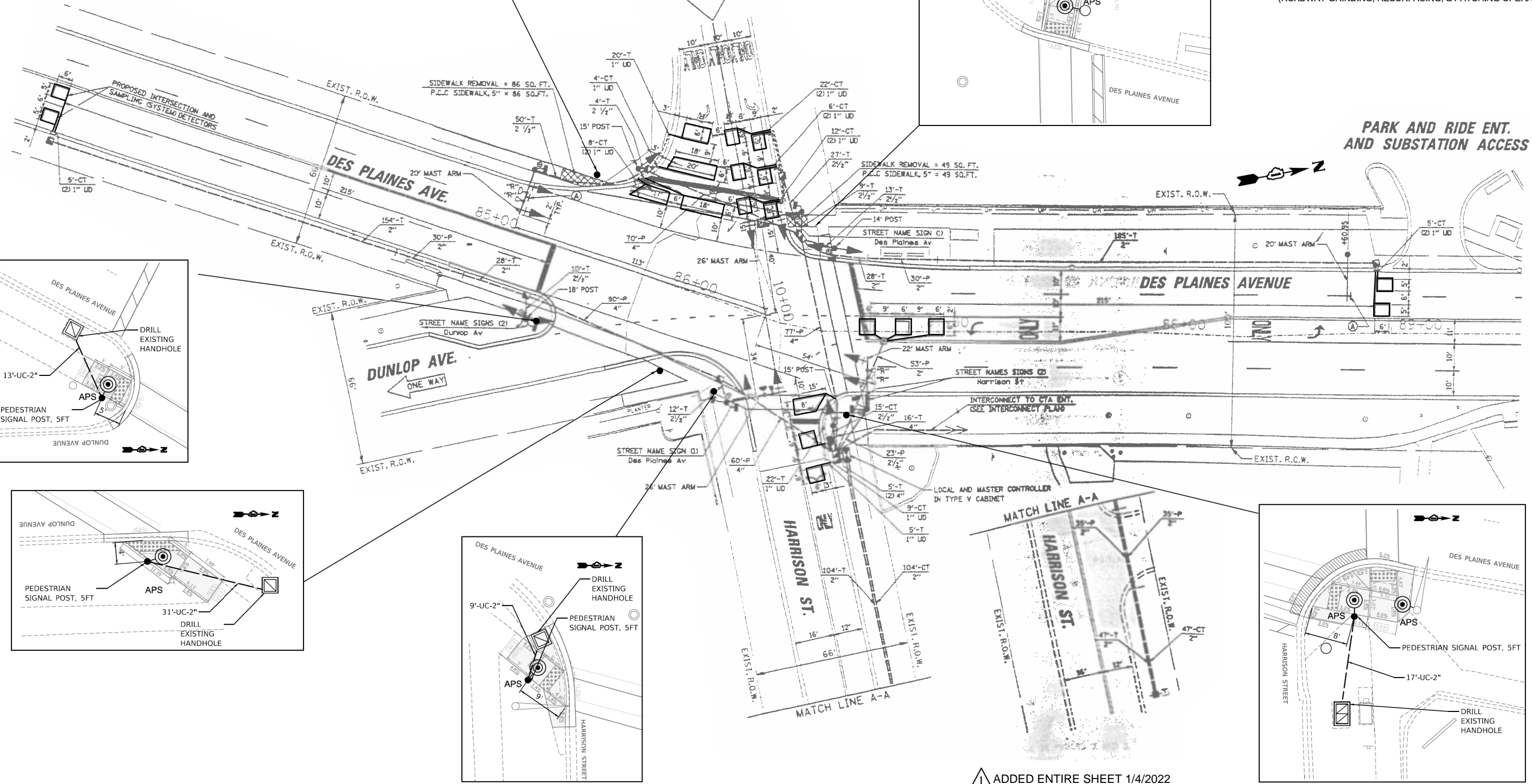
**REMOVAL AND RELOCATION NOTES:**

THE FOLLOWING ITEMS SHALL BE REMOVED BY THE CONTRACTOR AND SHALL BE DISPOSED OF BY THEM OUTSIDE THE RIGHT-OF-WAY AT THEIR EXPENSE. THE SALVAGE VALUE OF THE REMOVED EQUIPMENT SHALL BE REFLECTED IN THE CONTRACT BID PRICE.

- 2 EACH PEDESTRIAN PUSH-BUTTON

**NOTES:**

1. WORK SHALL MEET THE REQUIREMENTS OF THE SPECIAL PROVISION "DETECTOR LOOP RELACEMENT AND/OR INSTALLATION (ROADWAY GRINDING, RESURFACING, & PATCHING OPERATIONS)".



TS SHT NO. 09

FILE NAME: MA 201913\_Civil18-03-2500\_DOT\_PTB\_190 - Various Traffic Signal Design\Graphics\WD 22-033\_APS\_Des PlainesCAD\62R80\_Sheet\_Des Plaines at Harrison.dgn

**Sam Schwartz**  
 223 W. JACKSON  
 SUITE 1101  
 CHICAGO, IL 60606  
 TEL: (773) 305-0800

USER NAME = esalutz	DESIGNED - ERICA SALUTZ	REVISED - 01/03/2023 SK
PLOT SCALE = 40.0000' / in.	DRAWN - ERICA SALUTZ	REVISED -
PLOT DATE = 12/14/2022	CHECKED - PETER WOJTKIEWICZ	REVISED -
	DATE - 12/13/2022	REVISED -

STATE OF ILLINOIS  
 DEPARTMENT OF TRANSPORTATION

TRAFFIC SIGNAL MODERNIZATION PLAN  
 DES PLAINES AVE AT HARRISON ST / DUNLOP AVE

SCALE: SHEET OF SHEETS STA. TO STA.

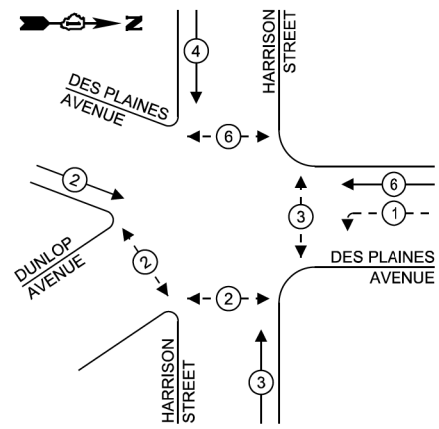
F.A.U. RTE.	SECTION	COUNTY	TOTAL SHEETS	SHEET NO.
2759	FAU 2759 22 RS	COOK	51	28A
CONTRACT NO. 62R80				
ILLINOIS FED. AID PROJECT				

TS 115  
 EAGLE 8M

ADDED ENTIRE SHEET 1/4/2022



**PROPOSED CONTROLLER SEQUENCE**



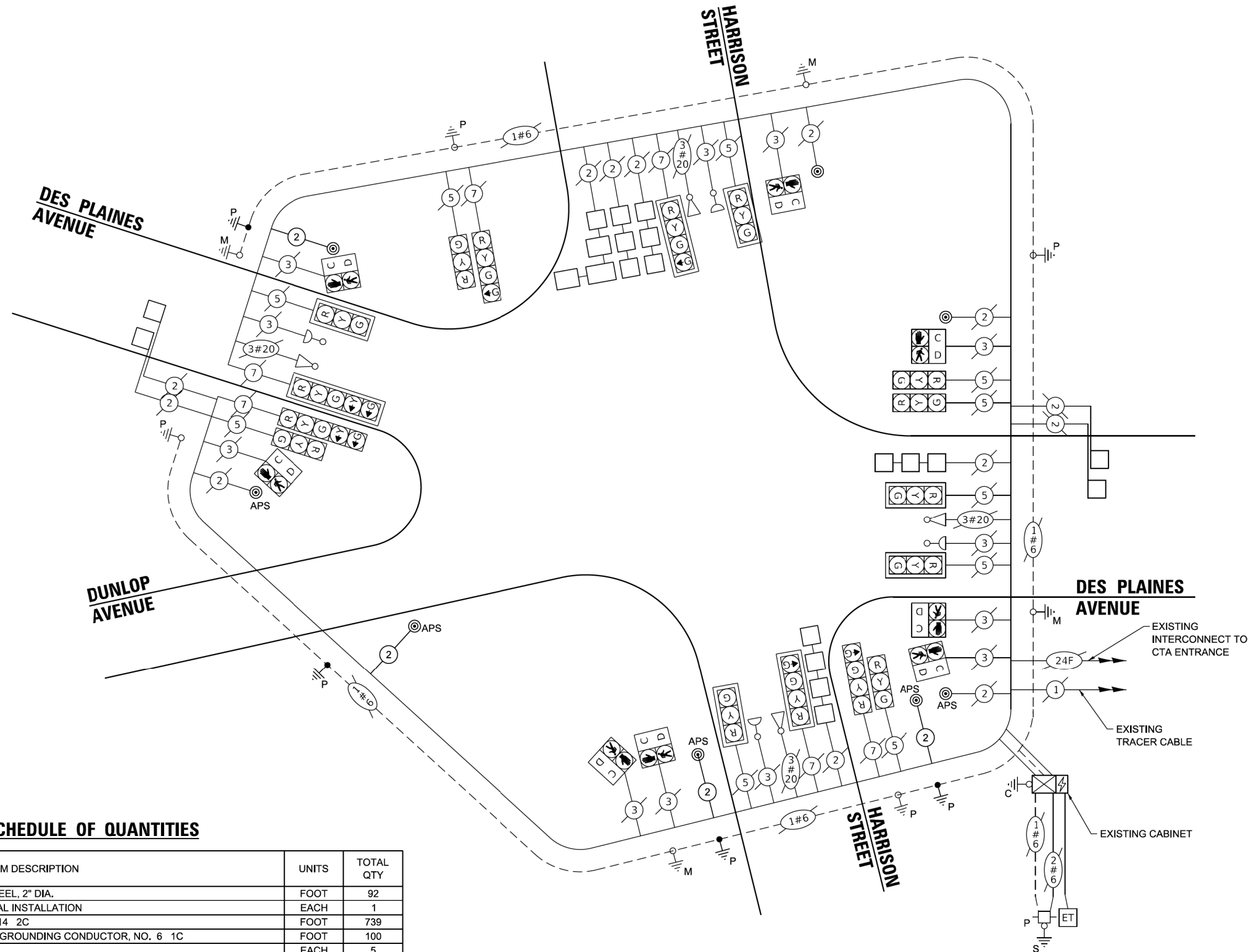
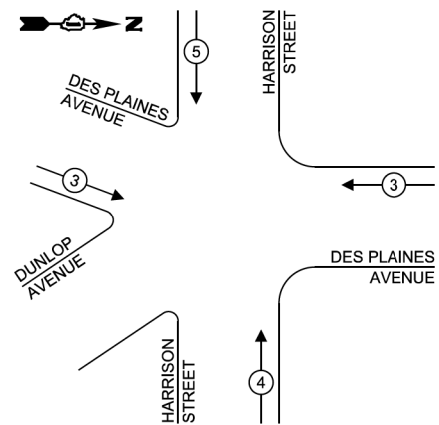
**LEGEND:**

- ← \* → PROTECTED PHASE
- ← \* - - PROTECTED/PERMITTED PHASE
- ← \* → PEDESTRIAN PHASE
- ← \* → OL OVERLAP

**RIGHT TURN OVERLAP PHASE DESIGNATION:**

OVERLAP LETTER	PERMISSIVE PHASE	PROTECTED PHASE
A	= 2 + 3	5
B	= 4 + 5	3
C	= 6 + 7	1
D	= 8 + 1	3

**PROPOSED EMERGENCY VEHICLE PREEMPTION SEQUENCE**



**CABLE PLAN**  
(NOT TO SCALE)

**TRAFFIC SIGNAL ELECTRICAL SERVICE REQUIREMENTS**

TYPE	NO. OF LAMPS	LED WATTAGE	% OPERATION	TOTAL WATTAGE
SIGNAL (RED)	16	17	50	136.0
(YELLOW)	16	25	25	100.0
(GREEN)	16	15	25	60.0
PERMISSIVE ARROW	8	12	10	9.6
PED. SIGNAL	8	20	100	200.0
CONTROLLER	2	100	100	200.0
UPS	1	25	100	25.0
VIDEO SYSTEM	-	150	100	-
BLANK-OUT SIGN	-	25	5	-
FLASHER	-	25	50	-
STREET NAME SIGN	-	120	50	-
LUMINAIRE	-	-	-	-
TOTAL =				730.6

ENERGY COSTS TO:  
ILLINOIS DEPARTMENT OF TRANSPORTATION  
201 W CENTER CT  
SCHAUMBURG, IL 60196  
ENERGY SUPPLY: CONTACT:  X  
PHONE:  X  
COMPANY:  X  
ACCOUNT NUMBER:  -

**SCHEDULE OF QUANTITIES**

ITEM DESCRIPTION	UNITS	TOTAL QTY
UNDERGROUND CONDUIT, GALVANIZED STEEL, 2" DIA.	FOOT	92
MAINTENANCE OF EXISTING TRAFFIC SIGNAL INSTALLATION	EACH	1
ELECTRIC CABLE IN CONDUIT, SIGNAL NO. 14 2C	FOOT	739
ELECTRIC CABLE IN CONDUIT, EQUIPMENT GROUNDING CONDUCTOR, NO. 6 1C	FOOT	100
DRILL EXISTING HANDHOLE	EACH	5
DETECTOR LOOP REPLACEMENT	FOOT	669
MODIFY EXISTING CONTROLLER	EACH	1
REMOVE EXISTING TRAFFIC SIGNAL EQUIPMENT	EACH	1
PEDESTRIAN SIGNAL POST, 5 FT.	EACH	5
ACCESSIBLE PEDESTRIAN SIGNALS	EACH	8
CONCRETE FOUNDATION, TYPE A 12-INCH DIAMETER	FOOT	20
RE-OPTIMIZE TRAFFIC SIGNAL SYSTEM LEVEL 1	EACH	1

TS SHT NO. 10

**Sam Schwartz**  
223 W. JACKSON  
SUITE 1101  
CHICAGO, IL 60606  
TEL: (773) 305-0800

USER NAME = esalutz	DESIGNED - ERICA SALUTZ	REVISED - 01/03/2023 SK
PLOT SCALE = 40,0000' / in.	DRAWN - ERICA SALUTZ	REVISED -
PLOT DATE = 12/14/2022	CHECKED - PETER WOJTKIEWICZ	REVISED -
	DATE - 12/13/2022	REVISED -

STATE OF ILLINOIS  
DEPARTMENT OF TRANSPORTATION

CABLE PLAN, PHASE DESIGNATION DIAGRAM,  
AND EMERGENCY VEHICLE PREEMPTION SEQUENCE  
DES PLAINES AVE AT HARRISON ST / DUNLOP AVE

SCALE: SHEET OF SHEETS STA. TO STA.

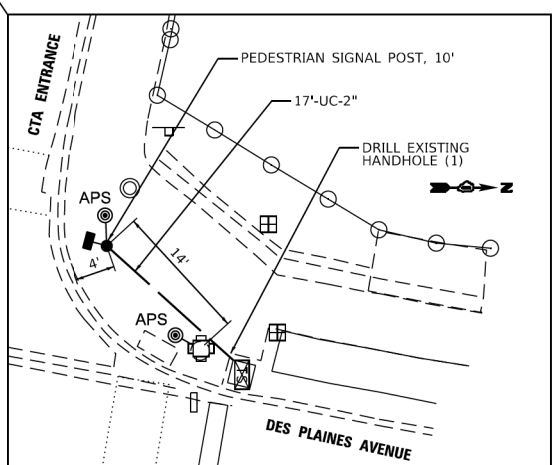
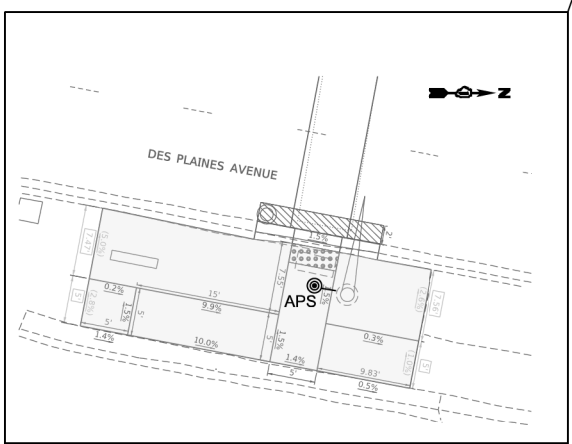
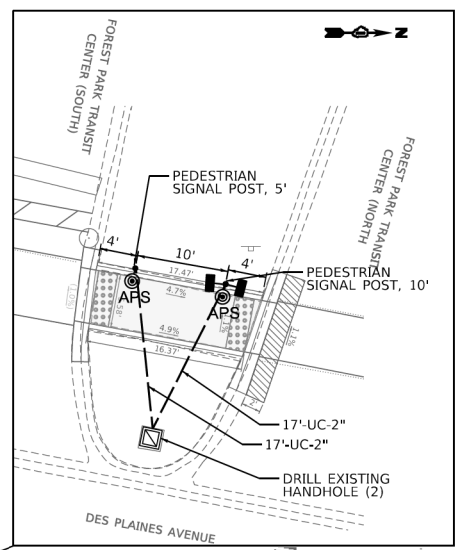
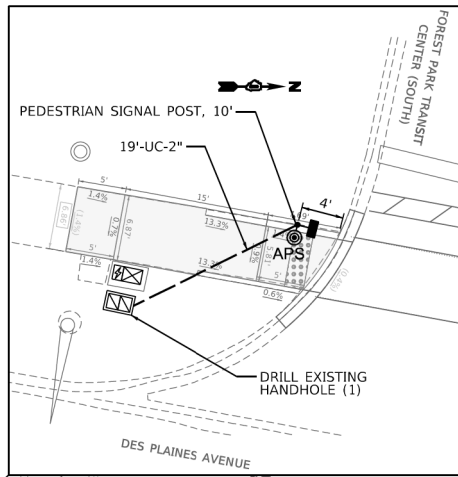
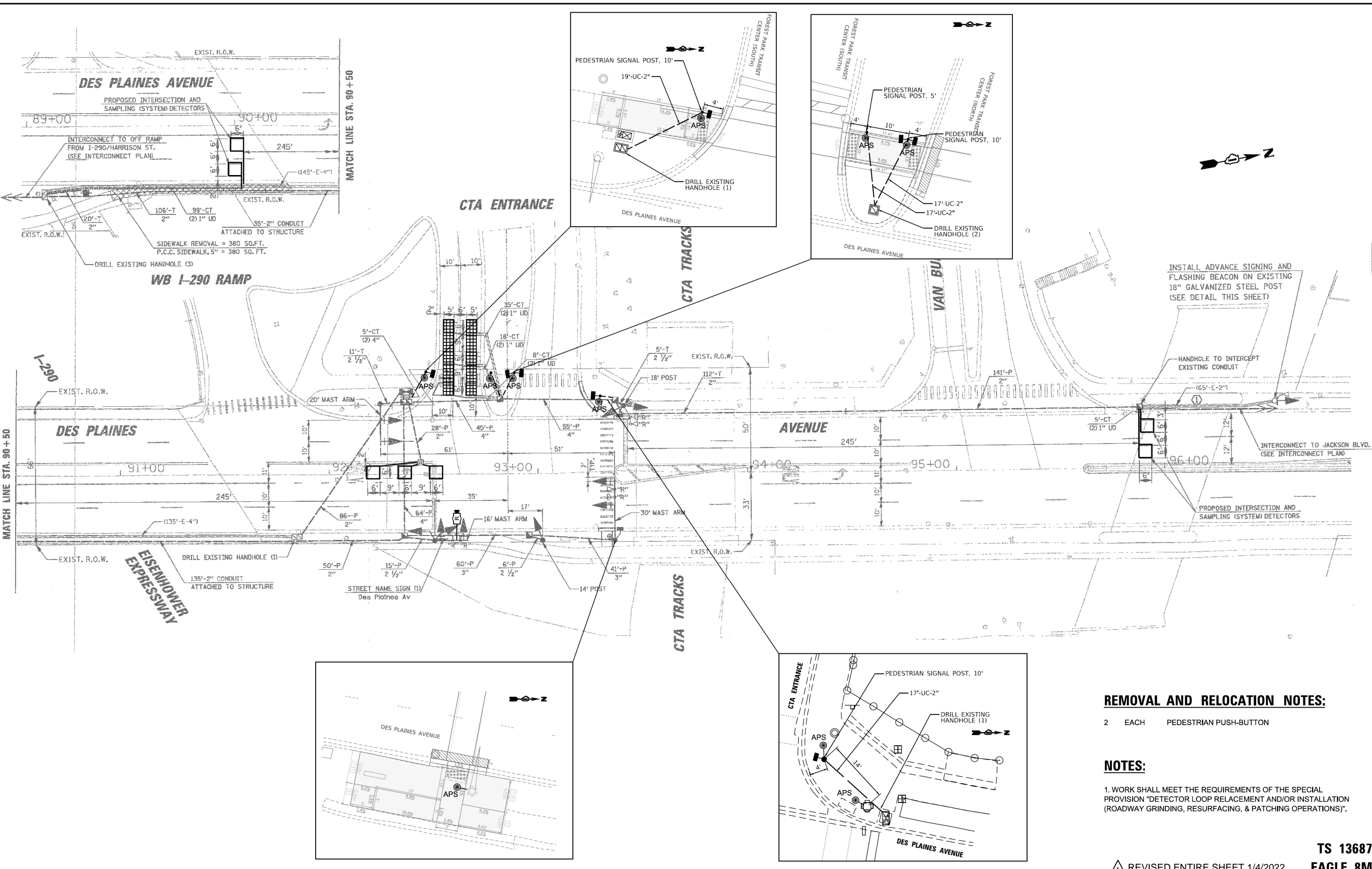
F.A.U. RTE.	SECTION	COUNTY	TOTAL SHEETS	SHEET NO.
2759	FAU 2759 22 RS	COOK	51	28B
CONTRACT NO. 62R80				
ILLINOIS FED. AID PROJECT				

TS 115  
EAGLE 8M

ADDED ENTIRE SHEET 1/4/2022

TS SHT NO. 11

FILE NAME: \\NA 2019\3\_Civil\18-03-2500 DOT ITB 190 - Various Traffic Signal Design\Graphics\WD 21-033 APS Des Plaines\CAD\62R80\_Sheet Des Plaines at CTA Entrance.dgn



**REMOVAL AND RELOCATION NOTES:**

- 2 EACH PEDESTRIAN PUSH-BUTTON

**NOTES:**

- 1. WORK SHALL MEET THE REQUIREMENTS OF THE SPECIAL PROVISION "DETECTOR LOOP REPLACEMENT AND/OR INSTALLATION (ROADWAY GRINDING, RESURFACING, & PATCHING OPERATIONS)".

REVISED ENTIRE SHEET 1/4/2022

TS 13687  
EAGLE 8M

**Sam Schwartz**  
223 W. JACKSON  
SUITE 1101  
CHICAGO, IL 60606  
TEL: (773) 305-0800

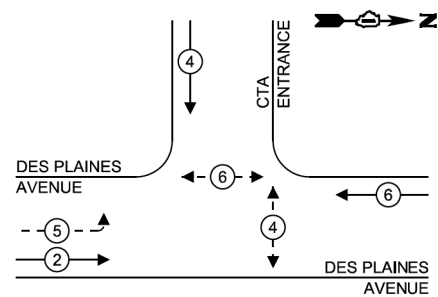
USER NAME = esalutz	DESIGNED - ERICA SALUTZ	REVISED - 01/03/2023 SK
PLOT SCALE = 40.0000' / 1"	DRAWN - ERICA SALUTZ	REVISED -
PLOT DATE = 12/14/2022	CHECKED - PETER WOJTKIEWICZ	REVISED -
	DATE - 12/13/2022	REVISED -

STATE OF ILLINOIS  
DEPARTMENT OF TRANSPORTATION

TRAFFIC SIGNAL MODERNIZATION PLAN	
DES PLAINES AVE AT CTA ENTRANCE	
SCALE: NTS	SHEET OF SHEETS STA. TO STA.

F.A.U. RTE.	SECTION	COUNTY	TOTAL SHEETS	SHEET NO.
2759	FAU 2759 22 RS	COOK	51	30
CONTRACT NO. 62R80				
ILLINOIS FED. AID PROJECT				

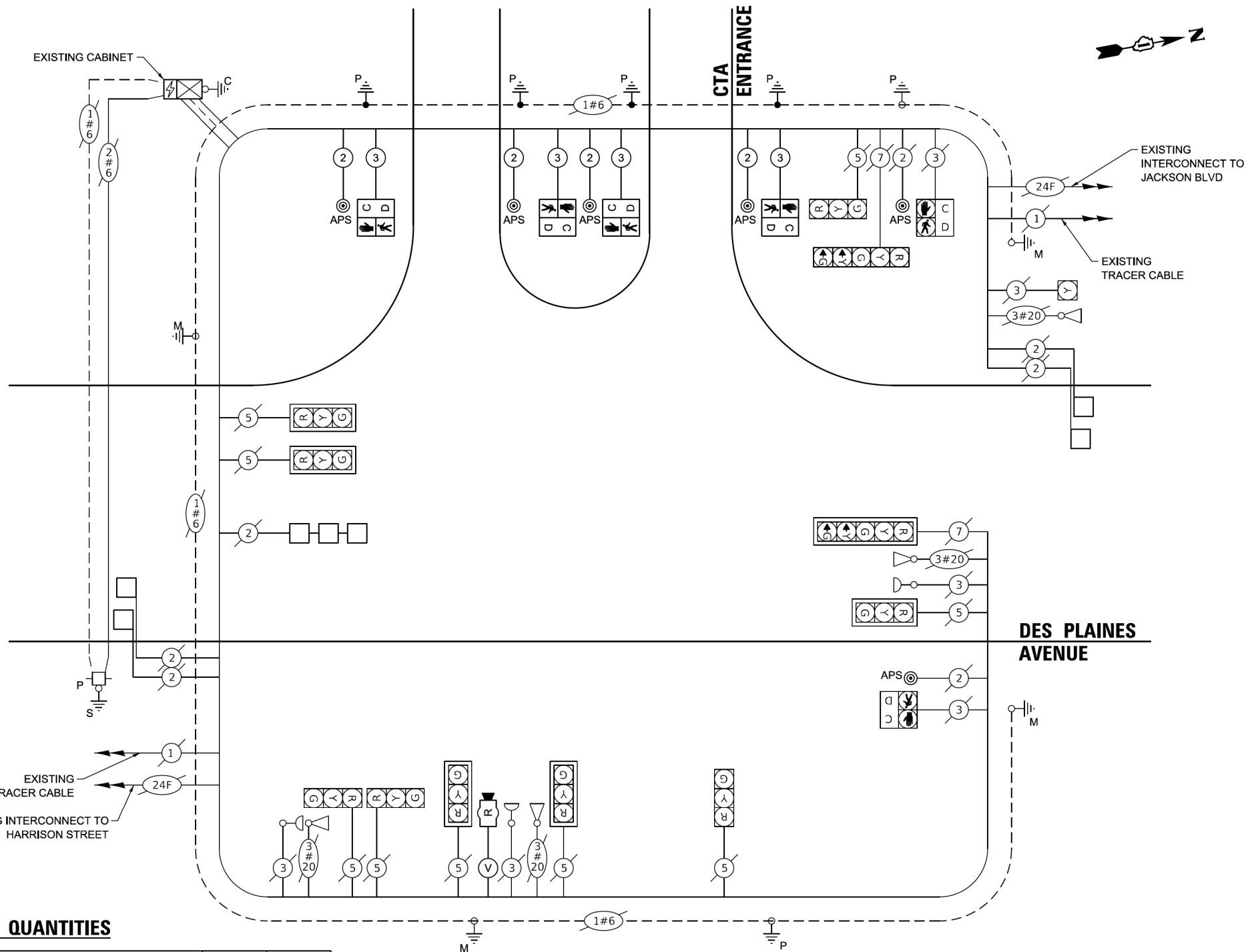
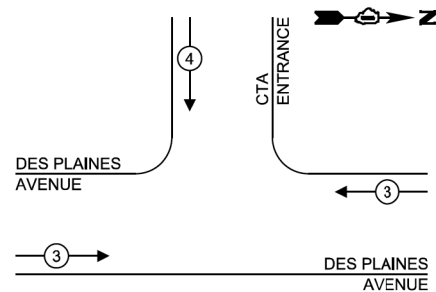
**PROPOSED CONTROLLER SEQUENCE**



**LEGEND:**

- ← ⊙ ← PROTECTED PHASE
- ← ⊙ → PROTECTED/PERMITTED PHASE
- ← ⊙ → PEDESTRIAN PHASE
- ↔ OL OVERLAP

**PROPOSED EMERGENCY VEHICLE PREEMPTION SEQUENCE**



**CABLE PLAN**  
(NOT TO SCALE)

**TRAFFIC SIGNAL ELECTRICAL SERVICE REQUIREMENTS**

TYPE	NO. OF LAMPS	LED WATTAGE	% OPERATION	TOTAL WATTAGE
SIGNAL (RED)	11	17	50	93.5
(YELLOW)	11	25	25	68.75
(GREEN)	11	15	25	97.2
PERMISSIVE ARROW	4	12	10	4.8
PED. SIGNAL	6	25	100	150.0
CONTROLLER	1	100	100	100.0
UPS	1	25	100	25.0
VIDEO SYSTEM	-	150	100	-
BLANK-OUT SIGN	-	25	5	-
FLASHER	0	25	50	12.5
STREET NAME SIGN	-	120	50	-
LUMINAIRE	-	-	-	-
<b>TOTAL =</b>				<b>495.8</b>

ENERGY COSTS TO:  
ILLINOIS DEPARTMENT OF TRANSPORTATION  
201 W CENTER CT  
SCHAUMBURG, IL 60196  
ENERGY SUPPLY: CONTACT: \_\_\_\_\_  
PHONE: \_\_\_\_\_  
COMPANY: \_\_\_\_\_  
ACCOUNT NUMBER: \_\_\_\_\_

**SCHEDULE OF QUANTITIES**

ITEM DESCRIPTION	UNITS	TOTAL QTY
UNDERGROUND CONDUIT, GALVANIZED STEEL, 2" DIA.	FOOT	70
MAINTENANCE OF EXISTING TRAFFIC SIGNAL INSTALLATION	EACH	1
ELECTRIC CABLE IN CONDUIT, SIGNAL NO. 14 2C	FOOT	420
ELECTRIC CABLE IN CONDUIT, SIGNAL NO. 14 3C	FOOT	448
ELECTRIC CABLE IN CONDUIT, EQUIPMENT GROUNDING CONDUCTOR, NO. 6 1C	FOOT	76
DRILL EXISTING HANDHOLE	EACH	4
PEDESTRIAN SIGNAL HEAD, LED, 1-FACE, BRACKET MOUNTED WITH COUNTDOWN TIMER	EACH	4
DETECTOR LOOP REPLACEMENT	FOOT	233
MODIFY EXISTING CONTROLLER	EACH	1
REMOVE EXISTING TRAFFIC SIGNAL EQUIPMENT	EACH	1
RADAR VEHICLE DETECTION SYSTEM, SINGLE APPROACH, STOP BAR	EACH	1
PEDESTRIAN SIGNAL POST, 10 FT.	EACH	3
PEDESTRIAN SIGNAL POST, 5 FT.	EACH	1
ACCESSIBLE PEDESTRIAN SIGNALS	EACH	6
CONCRETE FOUNDATION, TYPE A 12-INCH DIAMETER	FOOT	16
RE-OPTIMIZE TRAFFIC SIGNAL SYSTEM LEVEL 1	EACH	1

TS SHT NO. 12

**Sam Schwartz**  
223 W. JACKSON  
SUITE 1101  
CHICAGO, IL 60606  
TEL: (773) 305-0800

USER NAME = esalutz	DESIGNED - ERICA SALUTZ	REVISED - 01/03/2023 SK
PLOT SCALE = 40,0000' / 1"	DRAWN - ERICA SALUTZ	REVISED -
PLOT DATE = 12/14/2022	CHECKED - PETER WOJTKIEWICZ	REVISED -
	DATE - 12/13/2022	REVISED -

STATE OF ILLINOIS  
DEPARTMENT OF TRANSPORTATION

**CABLE PLAN, PHASE DESIGNATION DIAGRAM,  
AND EMERGENCY VEHICLE PREEMPTION SEQUENCE  
DES PLAINES AVE AT CTA ENTRANCE**

SCALE: NTS SHEET OF SHEETS STA. TO STA.

F.A.U. RTE. 2759	SECTION FAU 2759 22 RS	COUNTY COOK	TOTAL SHEETS 51	SHEET NO. 30A
	CONTRACT NO. 62R80			
ILLINOIS FED. AID PROJECT				

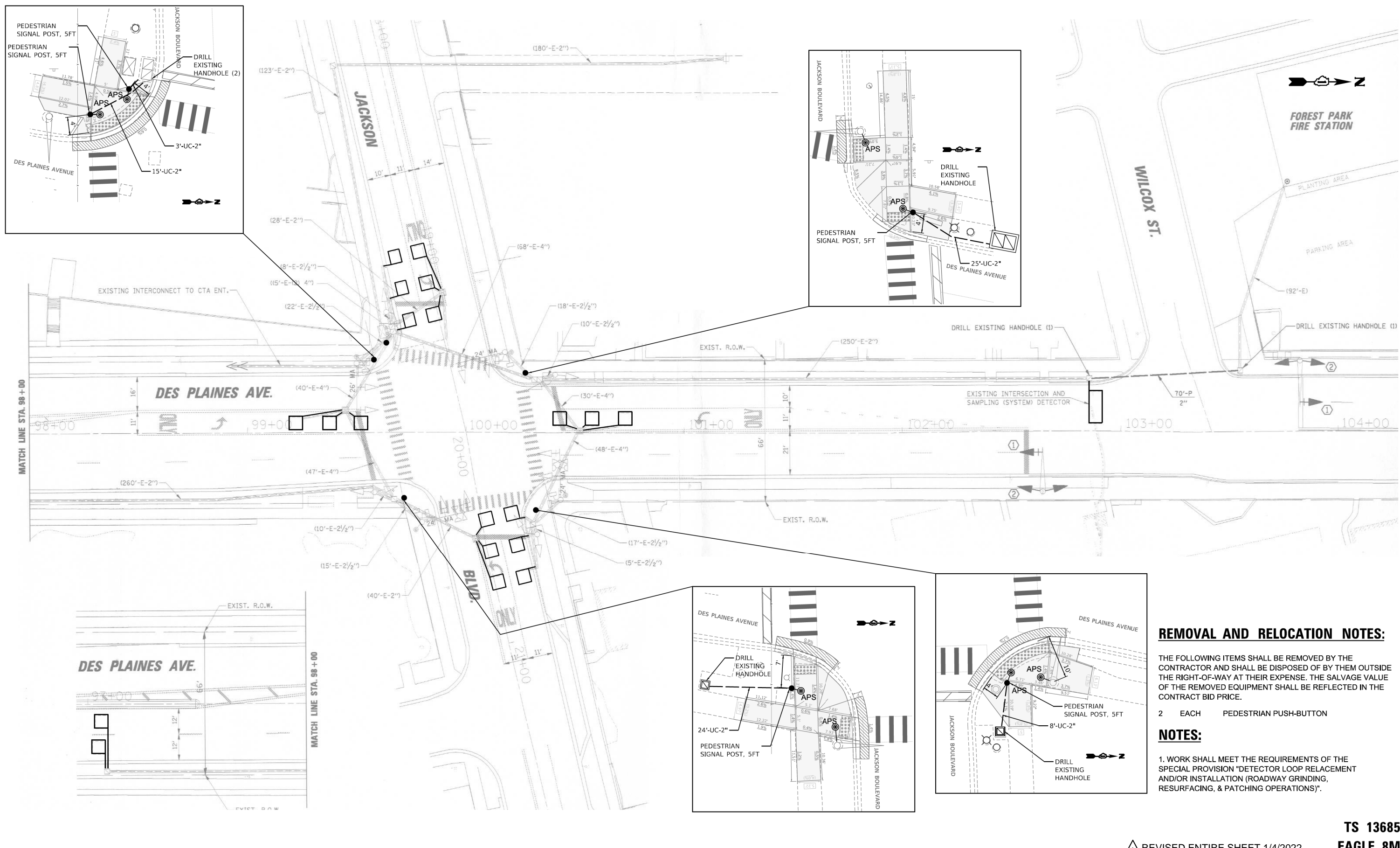
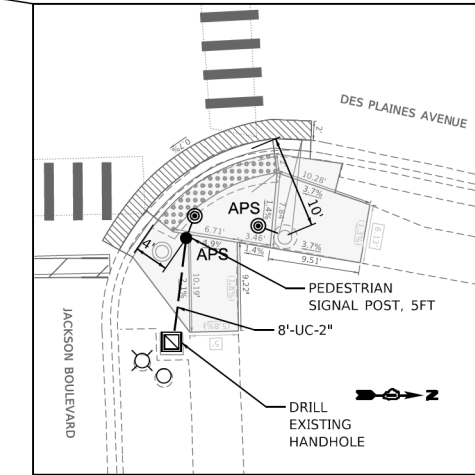
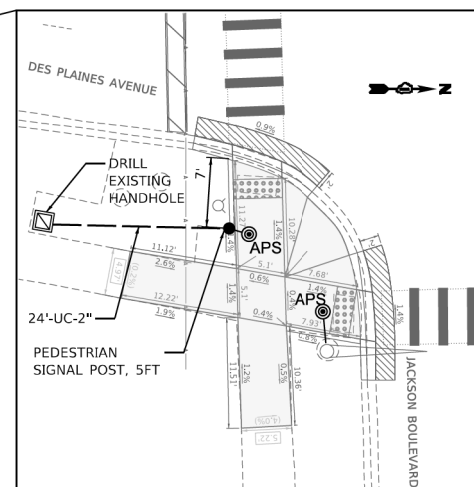
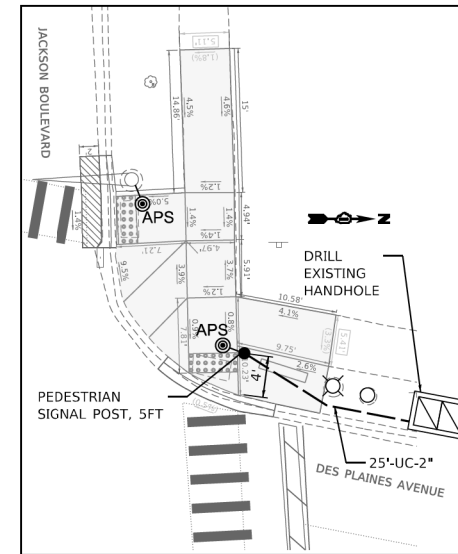
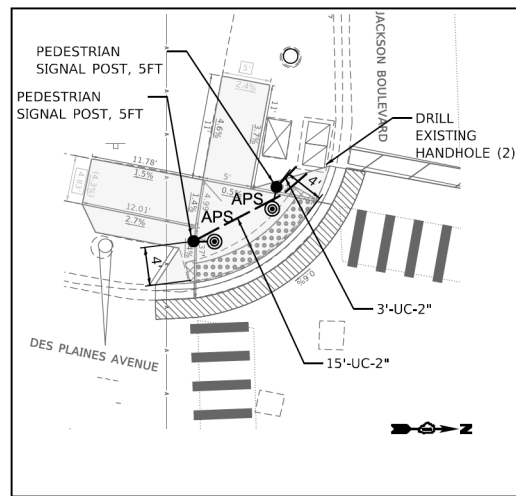
TS 13687

ADDED ENTIRE SHEET 1/4/2022 **EAGLE 8M**



TS SHT NO. 13

FILE NAME: MA 201913\_Civil18-03-2500\_DOT\_FTB\_190 - Various Traffic Signal Design\Graphics\WD 22-033\_APS\_Des PlainesCAD162R80\_Sheet Des Plaines at Jackson.dgn



**REMOVAL AND RELOCATION NOTES:**

THE FOLLOWING ITEMS SHALL BE REMOVED BY THE CONTRACTOR AND SHALL BE DISPOSED OF BY THEM OUTSIDE THE RIGHT-OF-WAY AT THEIR EXPENSE. THE SALVAGE VALUE OF THE REMOVED EQUIPMENT SHALL BE REFLECTED IN THE CONTRACT BID PRICE.

- 2 EACH PEDESTRIAN PUSH-BUTTON

**NOTES:**

1. WORK SHALL MEET THE REQUIREMENTS OF THE SPECIAL PROVISION "DETECTOR LOOP RELACEMENT AND/OR INSTALLATION (ROADWAY GRINDING, RESURFACING, & PATCHING OPERATIONS)".

REVISION 1/4/2022

TS 13685  
EAGLE 8M

**Sam Schwartz**  
223 W. JACKSON  
SUITE 1101  
CHICAGO, IL 60606  
TEL: (773) 305-0800

USER NAME = esalutz	DESIGNED - ERICA SALUTZ	REVISED - 01/03/2023 SK
PLOT SCALE = 40.0000' / 1"	DRAWN - ERICA SALUTZ	REVISED -
PLOT DATE = 12/14/2022	CHECKED - PETER WOJTKIEWICZ	REVISED -
	DATE - 12/13/2022	REVISED -

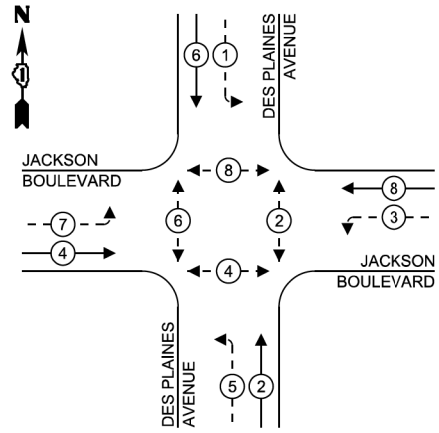
STATE OF ILLINOIS  
DEPARTMENT OF TRANSPORTATION

TRAFFIC SIGNAL MODERNIZATION PLAN  
DES PLAINES AVE AT JACKSON BLVD

SCALE: NTS SHEET OF SHEETS STA. TO STA.

F.A.U. RTE.	SECTION	COUNTY	TOTAL SHEETS	SHEET NO.
2759	FAU 2759 22 RS	COOK	51	31
CONTRACT NO. 62R80				
ILLINOIS FED. AID PROJECT				

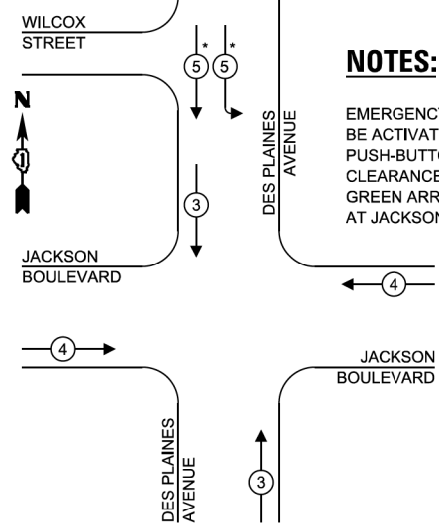
**PROPOSED CONTROLLER SEQUENCE**



**LEGEND:**

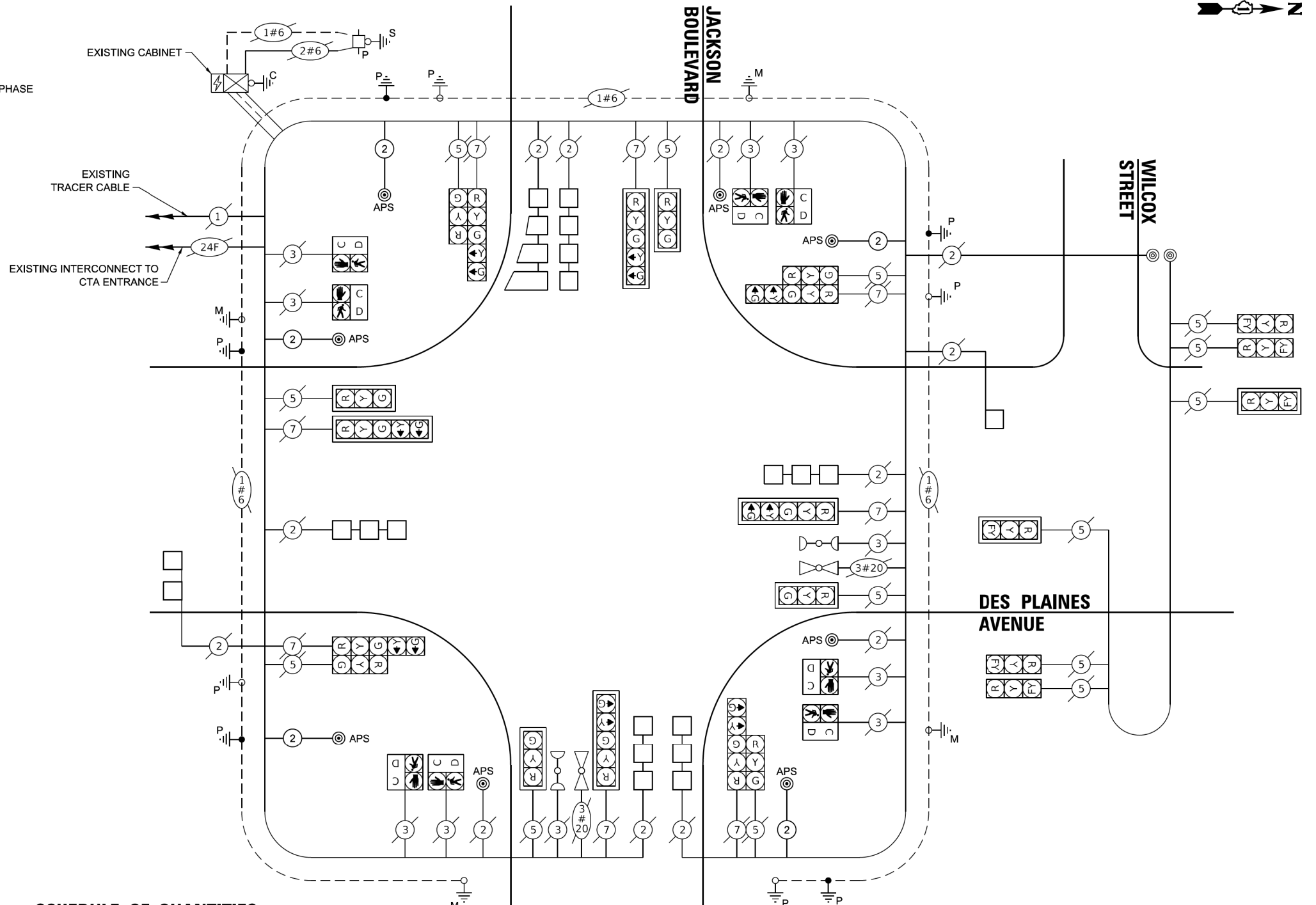
- ← \* → PROTECTED PHASE
- ← \* → PROTECTED/PERMITTED PHASE
- ← \* → PEDESTRIAN PHASE
- ← \* → OVERLAP

**PROPOSED EMERGENCY VEHICLE PREEMPTION SEQUENCE**



**NOTES:**

EMERGENCY VEHICLE PREEMPTOR 5 SHALL ONLY BE ACTIVATED BY THE EXISTING FIRE STATION PUSH-BUTTON AND WILL INITIATE AN ALL RED CLEARANCE PHASE FOLLOWED BY A GREEN BALL, GREEN ARROW FOR ONLY SOUTHBOUND TRAFFIC AT JACKSON BOULEVARD.



**SCHEDULE OF QUANTITIES**

ITEM DESCRIPTION	UNITS	TOTAL QTY
UNDERGROUND CONDUIT, GALVANIZED STEEL, 2" DIA.	FOOT	75
MAINTENANCE OF EXISTING TRAFFIC SIGNAL INSTALLATION	EACH	1
ELECTRIC CABLE IN CONDUIT, SIGNAL NO. 14 2C	FOOT	596
ELECTRIC CABLE IN CONDUIT, EQUIPMENT GROUNDING CONDUCTOR, NO. 6 1C	FOOT	83
DRILL EXISTING HANDHOLE	EACH	5
DETECTOR LOOP REPLACEMENT	FOOT	656
MODIFY EXISTING CONTROLLER	EACH	1
REMOVE EXISTING TRAFFIC SIGNAL EQUIPMENT	EACH	1
PEDESTRIAN SIGNAL POST, 5 FT.	EACH	5
ACCESSIBLE PEDESTRIAN SIGNALS	EACH	8
CONCRETE FOUNDATION, TYPE A 12-INCH DIAMETER	FOOT	20
RE-OPTIMIZE TRAFFIC SIGNAL SYSTEM LEVEL 1	EACH	1

**CABLE PLAN**  
(NOT TO SCALE)

**CABLE PLAN, PHASE DESIGNATION DIAGRAM, AND EMERGENCY VEHICLE PREEMPTION SEQUENCE  
DES PLAINES AVE AT JACKSON BLVD**

SCALE: NTS SHEET OF SHEETS STA. TO STA.

**TRAFFIC SIGNAL ELECTRICAL SERVICE REQUIREMENTS**

TYPE	NO. OF LAMPS	LED WATTAGE	% OPERATION	TOTAL WATTAGE
SIGNAL (RED)	16	17	50	136.0
(YELLOW)	16	25	25	100.0
(GREEN)	16	15	25	60.0
PERMISSIVE ARROW	16	12	10	19.2
PED. SIGNAL	8	25	100	200.0
CONTROLLER	1	100	100	100.0
UPS	1	25	100	25.0
-	-	-	-	-
RED	6	17	1	1.02
YELLOW	6	25	1	1.5
FLASHER	6	25	50	75.0
-	-	-	-	-
TOTAL =				717.72

ENERGY COSTS TO:

ILLINOIS DEPARTMENT OF TRANSPORTATION  
201 W CENTER CT  
SCHAUMBURG, IL 60196

ENERGY SUPPLY: CONTACT:  X  
PHONE:  X  
COMPANY:  X  
ACCOUNT NUMBER:  X

**Sam Schwartz**  
223 W. JACKSON  
SUITE 1101  
CHICAGO, IL 60606  
TEL: (773) 305-0800

USER NAME = esalutz	DESIGNED - ERICA SALUTZ	REVISED - 01/03/2023 SK
PLOT SCALE = 40,0000' / in.	DRAWN - ERICA SALUTZ	REVISED -
PLOT DATE = 12/14/2022	CHECKED - PETER WOJTKIEWICZ	REVISED -
	DATE - 12/13/2022	REVISED -

STATE OF ILLINOIS  
DEPARTMENT OF TRANSPORTATION

TS 13685  
EAGLE 8M

ADDED ENTIRE SHEET 1/4/2022

F.A.U. RTE.	SECTION	COUNTY	TOTAL SHEETS	SHEET NO.
2759	FAU 2759 22 RS	COOK	51	31A

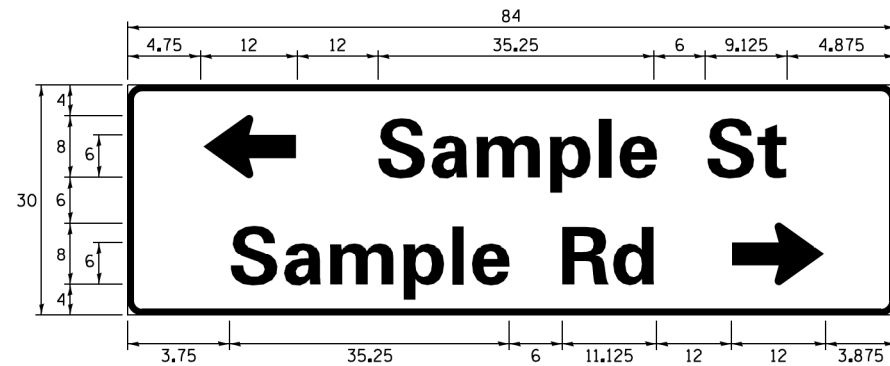
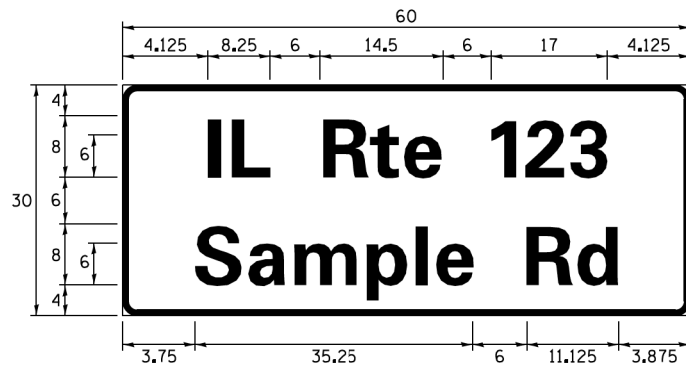
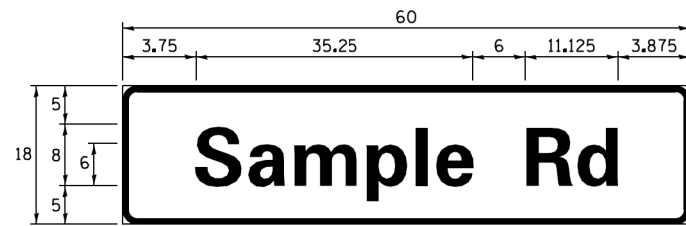
CONTRACT NO. 62R80

ILLINOIS FED. AID PROJECT

TS SHT NO. 14

FILE NAME: MA 201913\_Civil18-03-2500\_DDIT\_FTB\_190 - Various Traffic Signal Design/Construction 2-2-03\_APS Des PlainesCAD182R80\_Sheet Des Plaines at Jackson.dgn

**SIGN PANEL – TYPE 1 OR TYPE 2**



DESIGN SERIES	AREA (SQ FT)	SIGN PANEL TYPE	SHEETING TYPE	QTY. REQUIRED
D OR C	-	1 OR 2	ZZ	-

ALL DIMENSIONS ARE IN INCHES EXCEPT NOTED OTHERWISE

**COMMON STREET NAME ABBREVIATIONS AND WIDTHS**

NAME	ABBREVIATION	WIDTH (INCH)	
		SERIES "C"	SERIES "D"
AVENUE	Ave	15.000	18.250
BOULEVARD	Blvd	17.125	20.000
CIRCLE	Cir	11.125	13.000
COURT	Ct	8.250	9.625
DRIVE	Dr	8.625	10.125
HIGHWAY	Hwy	18.375	22.000
ILLINOIS	IL	7.000	8.250
LANE	Ln	9.125	10.750
PARKWAY	Pkwy	23.375	27.375
PLACE	Pl	7.125	7.750
ROAD	Rd	9.625	11.125
ROUTE	Rte	12.625	14.500
STREET	St	8.000	9.125
TERRACE	Ter	12.625	14.625
TRAIL	Tr	7.750	9.125
UNITED STATES	US	10.375	12.250

**GENERAL NOTES**

- WHERE MAST ARM MOUNTED STREET NAME SIGNS ARE SPECIFIED, THE MAST ARM ASSEMBLY AND POLES SHALL BE DESIGNED TO SUPPORT THE LOADINGS CALLED FOR ON STANDARDS 877001, 877002, 877006, 877011 AND 877012, AS APPLICABLE, PLUS TWO (2) SIGN PANELS 2'-6" x 8'-0" MOUNTED AS SHOWN. THE DESIGN SHALL BE IN ACCORDANCE WITH THE REQUIREMENTS OF THE CURRENT "STANDARD SPECIFICATIONS FOR STRUCTURAL SUPPORTS FOR HIGHWAY SIGNS, LUMINAIRES, AND TRAFFIC SIGNALS" AS PUBLISHED BY THE AMERICAN ASSOCIATION OF STATE HIGHWAY AND TRANSPORTATION OFFICIALS FOR 80 M.P.H. WIND VELOCITY.
- ALL SIGNS SHALL CONSIST OF A WHITE LEGEND AND BORDER (TYPE ZZ SHEETING) ON A GREEN BACKGROUND (TYPE ZZ SHEETING)
- THE SIGN LENGTH SHALL BE IN 6-INCH INCREMENTS, BUT THE OVERALL LENGTH SHALL NOT EXCEED 8'-0". ALL BORDERS SHALL BE 3/4" WIDE. CORNER RADIUS SHALL BE 1-7/8". THE SPACING BETWEEN THE WORDS SHOULD BE 6", IF POSSIBLE, BUT MAY BE REDUCED TO 5" WHEN SPACING IS CRITICAL. A MINIMUM OF 2-1/2" SHALL BE INCLUDED BETWEEN THE WORD AND THE RIGHT AND LEFT EDGES OF THE SIGN.
- A PREFERRED METHOD FOR THE SIGN DESIGN IS TO USE SERIES "D" LETTER ON A ONE-LINE SIGN 18" IN HEIGHT AND A MAXIMUM OF 8'-0" IN WIDTH. IF SERIES "D" DOES NOT FIT ON A 8'-0" SIGN, THEN SERIES "C" SHOULD BE TRIED. IF SERIES "C" DOES NOT FIT ON A 8'-0" SIGN, A 30" HIGH TWO-LINE SIGN CAN BE USED. THE CROSSROAD DESIGNATION AS TO STREET, AVENUE, ETC. SHOULD BE SPELLED OUT ON THE SECOND LINE, IF THE ABBREVIATION CANNOT FIT ON THE FIRST LINE.
- LED ILLUMINATED STREET NAME SIGNS CAN BE USED IN PLACE OF REGULAR SIGN PANELS BUT ANY SPECIAL WORDING AND SYMBOLGY MUST BE APPROVED BY THE DEPARTMENT. GENERAL DESIGN REQUIREMENT AS LISTED ABOVE (COLOR, FONT, SIZE, ETC.) MUST BE FOLLOWED.
- SIGNFIX ALUMINUM CHANNEL FRAMING SYSTEM SHALL BE USED FOR ALL SIGNS ATTACHED TO SIGNAL POLES AND POSTS.

**LOCAL SUPPLIERS:**

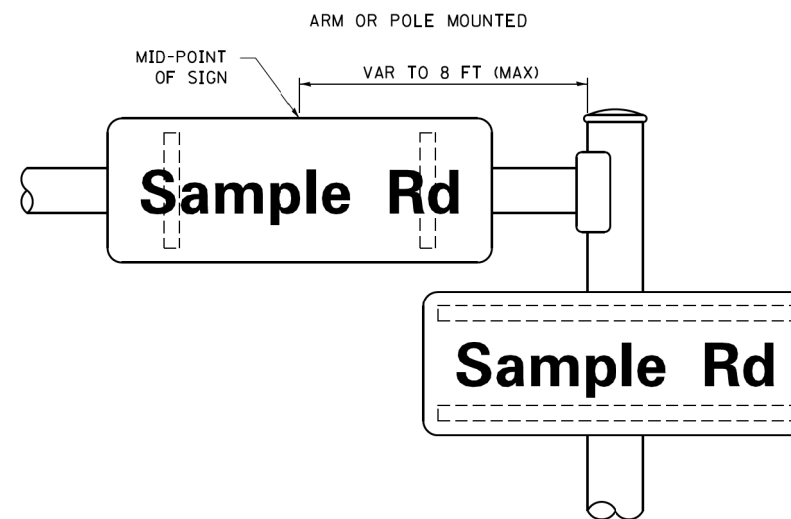
- J.O. HERBERT COMPANY, INC  
MIDLOTHIAN, VA
- WESTERN REMAC, INC.  
WOODRIDGE, IL

**PARTS LISTING:**

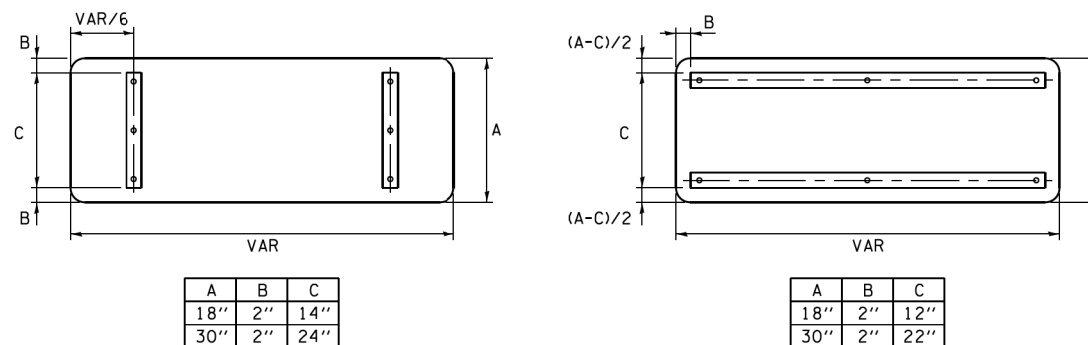
- SIGN CHANNEL PART #HPN053 (MED. CHANNEL)  
1/4" x 14 x 1" H.W.H. #3
- SIGN SCREWS SELF TAPPING WITH NEOPRENE WASHER  
PART #HPN034 (UNIVERSAL)
- BRACKETS CHANNEL CLAMPS WITH STAINLESS STEEL STRAPPING

OTHER BRANDS OF MOUNTING HARDWARE ARE ACCEPTABLE, BASED UPON THE DEPARTMENT'S APPROVAL AND COMPATIBILITY WITH THE CHANNEL/BACKET OF THE ABOVE PRODUCT.

**MOUNTING LOCATION**



**SUPPORTING CHANNELS**



**STANDARD ALPHABETS SPACING CHART**

( 8" ) UPPER CASE AND ( 6" ) LOWER CASE

FHWA SERIES "C"				FHWA SERIES "D"			
CHARACTER	LEFT SPACING ( INCH )	WIDTH ( INCH )	RIGHT SPACING ( INCH )	CHARACTER	LEFT SPACING ( INCH )	WIDTH ( INCH )	RIGHT SPACING ( INCH )
A	0.240	5.122	0.240	A	0.240	6.804	0.240
B	0.880	4.482	0.480	B	0.960	5.446	0.400
C	0.720	4.482	0.720	C	0.800	5.446	0.800
D	0.880	4.482	0.720	D	0.960	5.446	0.800
E	0.880	4.082	0.480	E	0.960	4.962	0.400
F	0.880	4.082	0.240	F	0.960	4.962	0.240
G	0.720	4.482	0.720	G	0.800	5.446	0.800
H	0.880	4.482	0.880	H	0.960	5.446	0.960
I	0.880	1.120	0.880	I	0.960	1.280	0.960
J	0.240	4.082	0.880	J	0.240	5.122	0.960
K	0.880	4.482	0.480	K	0.960	5.604	0.400
L	0.880	4.082	0.240	L	0.960	4.962	0.240
M	0.880	5.284	0.880	M	0.960	6.244	0.960
N	0.880	4.482	0.880	N	0.960	5.446	0.960
O	0.720	4.722	0.720	O	0.800	5.684	0.800
P	0.880	4.482	0.720	P	0.960	5.446	0.240
Q	0.720	4.722	0.720	Q	0.800	5.684	0.800
R	0.880	4.482	0.480	R	0.960	5.446	0.400
S	0.480	4.482	0.480	S	0.400	5.446	0.400
T	0.240	4.082	0.240	T	0.240	4.962	0.240
U	0.880	4.482	0.880	U	0.960	5.446	0.960
V	0.240	4.962	0.240	V	0.240	6.084	0.240
W	0.240	6.084	0.240	W	0.240	7.124	0.240
X	0.240	4.722	0.240	X	0.400	5.446	0.400
Y	0.240	5.122	0.240	Y	0.240	6.884	0.240
Z	0.480	4.482	0.480	Z	0.400	5.446	0.400
a	0.320	3.842	0.640	a	0.400	4.562	0.720
b	0.720	4.082	0.480	b	0.800	4.802	0.480
c	0.480	4.002	0.240	c	0.480	4.722	0.240
d	0.480	4.082	0.720	d	0.480	4.802	0.800
e	0.480	4.082	0.320	e	0.480	4.722	0.320
f	0.320	2.480	0.160	f	0.320	2.882	0.160
g	0.480	4.082	0.720	g	0.480	4.802	0.800
h	0.720	4.082	0.640	h	0.800	4.722	0.720
i	0.720	1.120	0.720	i	0.800	1.280	0.800
j	0.000	2.320	0.720	j	0.000	2.642	0.800
k	0.720	4.322	0.160	k	0.800	5.122	0.160
l	0.720	1.120	0.720	l	0.800	1.280	0.800
m	0.720	6.724	0.640	m	0.800	7.926	0.720
n	0.720	4.082	0.640	n	0.800	4.722	0.720
o	0.480	4.082	0.480	o	0.480	4.882	0.480
p	0.720	4.082	0.480	p	0.800	4.802	0.480
q	0.480	4.082	0.720	q	0.480	4.802	0.800
r	0.720	2.642	0.160	r	0.800	3.042	0.160
s	0.320	3.362	0.240	s	0.320	3.762	0.240
t	0.080	2.882	0.080	t	0.080	3.202	0.080
u	0.640	4.082	0.720	u	0.720	4.722	0.800
v	0.160	4.722	0.160	v	0.160	5.684	0.160
w	0.160	7.524	0.160	w	0.160	9.046	0.160
x	0.000	5.202	0.000	x	0.000	6.244	0.000
y	0.160	4.962	0.160	y	0.160	6.004	0.160
z	0.240	3.362	0.240	z	0.240	4.002	0.240
1	0.720	1.680	0.880	1	0.800	2.000	0.960
2	0.480	4.482	0.480	2	0.800	5.446	0.800
3	0.480	4.482	0.480	3	1.440	5.446	0.800
4	0.240	4.962	0.720	4	0.160	6.004	0.960
5	0.480	4.482	0.480	5	0.800	5.446	0.800
6	0.720	4.482	0.720	6	0.800	5.446	0.800
7	0.240	4.482	0.720	7	0.560	5.446	0.560
8	0.480	4.482	0.480	8	0.800	5.446	0.800
9	0.480	4.482	0.480	9	0.800	5.446	0.800
0	0.720	4.722	0.720	0	0.800	5.684	0.800
-	0.240	2.802	0.240	-	0.240	2.802	0.240

TS SHT NO. 01

ADDED ENTIRE SHEET 1/4/2022

FILE NAME =	USER NAME = dravekosgn	DESIGNED - LP/IP	REVISED - 01/03/2023 SK	STATE OF ILLINOIS DEPARTMENT OF TRANSPORTATION	DISTRICT ONE MAST ARM MOUNTED STREET NAME SIGNS	F.A.U. RTE. 2759	SECTION FAU 2759 22 RS	COUNTY COOK	TOTAL SHEETS 51	SHEET NO. 42B	
Default	PLOT SCALE = 50.0000' / 1"	CHECKED - IP	REVISED -			SCALE:	SHEET OF SHEETS	STA. TO STA.	CONTRACT NO. 62R80		
	PLOT DATE = 7/31/2015	DATE - 10/01/2014	REVISED -			ILLINOIS FED. AID PROJECT					
ILLINOIS FEDERAL AID PROJECT CONTRACT NO. 62R80 SECTION FAU 2759 22 RS COUNTY COOK TOTAL SHEETS 51 SHEET NO. 42B											