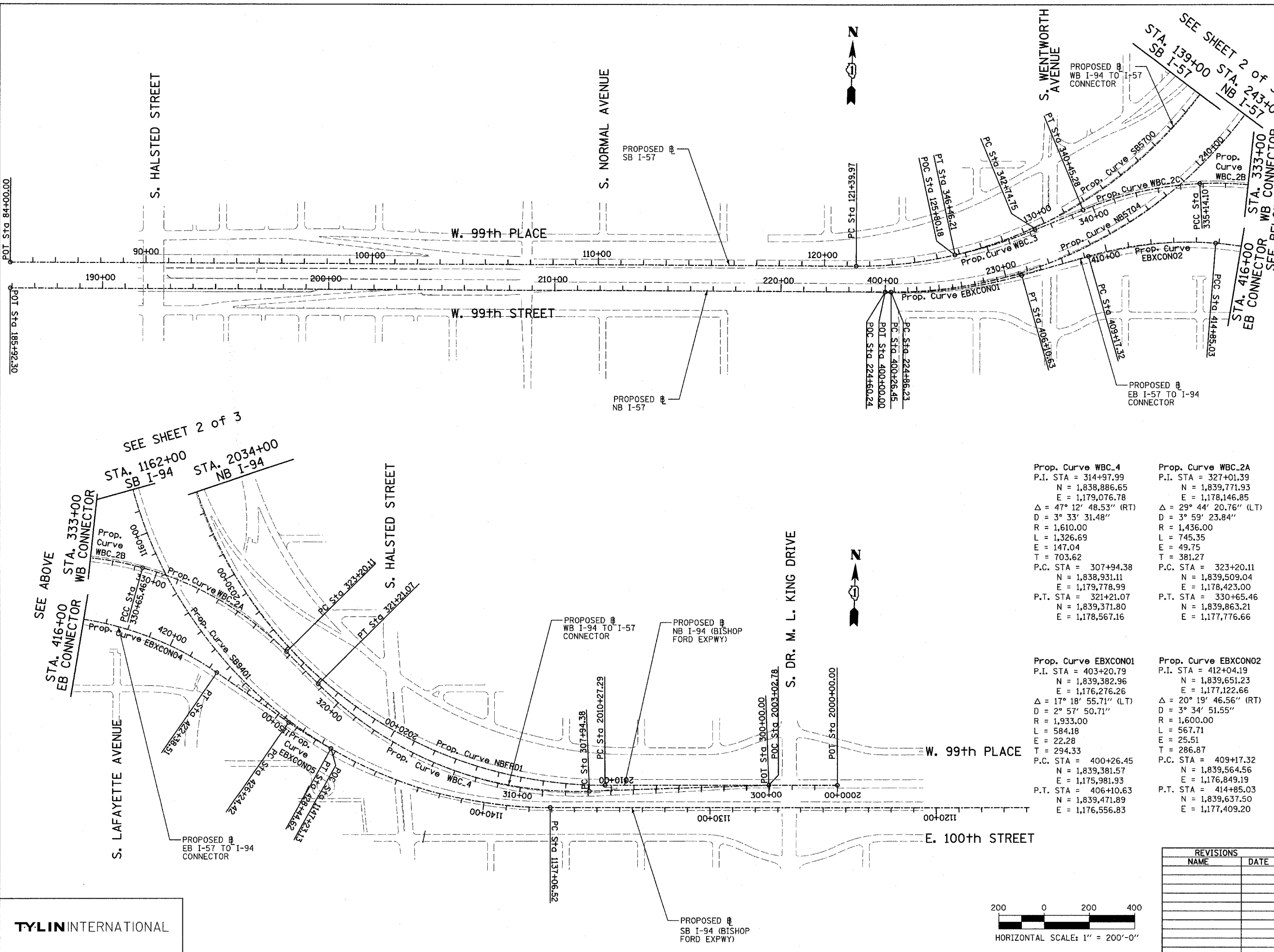


F.A.I. RTE.	SECTION	COUNTY	TOTAL SHEETS	SHEET NO.
90/94	2003-0311	COOK	976	12
STA.		TO STA.		
FED. ROAD DIST. NO.		ILLINOIS FED. AID PROJECT		

62583



<b>Prop. Curve NB5704</b> P.I. STA = 235+20.23 N = 1,839,407.65 E = 1,177,015.14 Δ = 56° 09' 47.10" (LT) D = 2° 57' 23.18" R = 1,938.00 L = 1,899.69 E = 258.59 T = 1,033.99 P.C. STA = 224+86.23 N = 1,839,382.09 E = 1,175,981.46 P.T. STA = 243+85.92 N = 1,840,280.48 E = 1,177,569.49	<b>Prop. Curve SB5700</b> P.I. STA = 133+70.06 N = 1,839,521.70 E = 1,177,054.03 Δ = 66° 11' 55.15" (LT) D = 3° 02' 10.83" R = 1,887.00 L = 2,180.21 E = 365.53 T = 1,230.09 P.C. STA = 121+39.97 N = 1,839,491.52 E = 1,175,824.31 P.T. STA = 143+20.18 N = 1,840,659.02 E = 1,177,522.68
<b>Prop. Curve SB9401</b> P.I. STA = 1160+15.97 N = 1,838,783.95 E = 1,177,299.83 Δ = 100° 48' 58.07" (RT) D = 2° 59' 59.20" R = 1,910.00 L = 3,360.79 E = 1,086.95 T = 2,309.46 P.C. STA = 1137+06.52 N = 1,838,851.99 E = 1,179,608.28 P.T. STA = 1170+67.30 N = 1,841,064.16 E = 1,177,666.20	<b>Prop. Curve NBFRD1</b> P.I. STA = 2029+29.73 N = 1,838,902.75 E = 1,177,946.02 Δ = 90° 04' 24.06" (RT) D = 3° 00' 56.04" R = 1,900.00 L = 2,986.95 E = 788.73 T = 1,902.43 P.C. STA = 2010+27.29 N = 1,838,959.64 E = 1,179,847.60 P.T. STA = 2040+14.24 N = 1,840,804.40 E = 1,177,891.56

<b>Prop. Curve WBC.4</b> P.I. STA = 314+97.99 N = 1,838,886.65 E = 1,179,076.78 Δ = 47° 12' 48.53" (RT) D = 3° 33' 31.48" R = 1,610.00 L = 1,326.69 E = 147.04 T = 703.62 P.C. STA = 307+94.38 N = 1,838,931.11 E = 1,179,778.99 P.T. STA = 321+21.07 N = 1,839,371.80 E = 1,178,567.16	<b>Prop. Curve WBC.2A</b> P.I. STA = 327+01.39 N = 1,839,771.93 E = 1,178,146.85 Δ = 29° 44' 20.76" (LT) D = 3° 59' 23.84" R = 1,436.00 L = 745.35 E = 49.75 T = 381.27 P.C. STA = 323+20.11 N = 1,839,509.04 E = 1,178,423.00 P.T. STA = 335+14.10 N = 1,839,863.21 E = 1,177,776.66	<b>Prop. Curve WBC.2B</b> P.I. STA = 332+91.75 N = 1,839,917.38 E = 1,177,556.95 Δ = 18° 29' 34.12" (LT) D = 4° 07' 19.19" R = 1,390.00 L = 448.64 E = 18.30 T = 226.29 P.C. STA = 330+65.46 N = 1,839,863.21 E = 1,177,776.66 P.T. STA = 335+14.10 N = 1,839,899.07 E = 1,177,331.41	<b>Prop. Curve WBC.2C</b> P.I. STA = 337+82.29 N = 1,839,877.37 E = 1,177,064.10 Δ = 19° 30' 39.60" (LT) D = 3° 40' 23.35" R = 1,559.85 L = 531.18 E = 22.89 T = 268.19 P.C. STA = 335+14.10 N = 1,839,899.07 E = 1,177,331.41 P.T. STA = 340+45.28 N = 1,839,767.64 E = 1,176,819.39
--	--	--	--

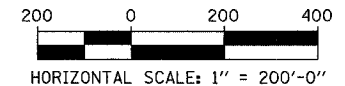
<b>Prop. Curve EBXCNO1</b> P.I. STA = 403+20.79 N = 1,839,382.96 E = 1,176,276.26 Δ = 17° 18' 55.71" (LT) D = 2° 57' 50.71" R = 1,933.00 L = 584.18 E = 22.28 T = 294.33 P.C. STA = 400+26.45 N = 1,839,381.57 E = 1,175,981.93 P.T. STA = 406+10.63 N = 1,839,471.89 E = 1,176,556.83	<b>Prop. Curve EBXCNO2</b> P.I. STA = 412+04.19 N = 1,839,651.23 E = 1,177,122.66 Δ = 20° 19' 46.56" (RT) D = 3° 34' 51.55" R = 1,600.00 L = 567.71 E = 25.51 T = 286.87 P.C. STA = 409+17.32 N = 1,839,564.56 E = 1,176,849.19 P.T. STA = 414+85.03 N = 1,839,637.50 E = 1,177,409.20	<b>Prop. Curve EBXCNO4</b> P.I. STA = 418+70.80 N = 1,839,619.04 E = 1,177,794.53 Δ = 30° 17' 44.12" (RT) D = 4° 01' 14.72" R = 1,425.00 L = 753.48 E = 51.29 T = 385.77 P.C. STA = 414+85.03 N = 1,839,637.50 E = 1,177,409.20 P.T. STA = 422+38.51 N = 1,839,408.71 E = 1,178,117.92	<b>Prop. Curve EBXCNO5</b> P.I. STA = 427+34.61 N = 1,839,138.24 E = 1,178,533.79 Δ = 5° 38' 50.84" (LT) D = 2° 33' 52.98" R = 2,234.00 L = 220.20 E = 2.72 T = 110.19 P.C. STA = 426+24.42 N = 1,839,198.31 E = 1,178,441.42 P.T. STA = 428+44.62 N = 1,839,087.55 E = 1,178,631.63
---	---	---	---

REVISIONS	
NAME	DATE

ILLINOIS DEPARTMENT OF TRANSPORTATION  
F.A.I. 90/94 (DAN RYAN EXPRESSWAY)  
31st STREET TO I-57

ALIGNMENT  
SHEET 1 OF 3

SCALE: 1"=200'-0"  
DATE: OCTOBER 29, 2004  
DRAWN BY: JPM  
CHECKED BY: DAK



TYLIN INTERNATIONAL

1/23/2004 06:23:32 PM