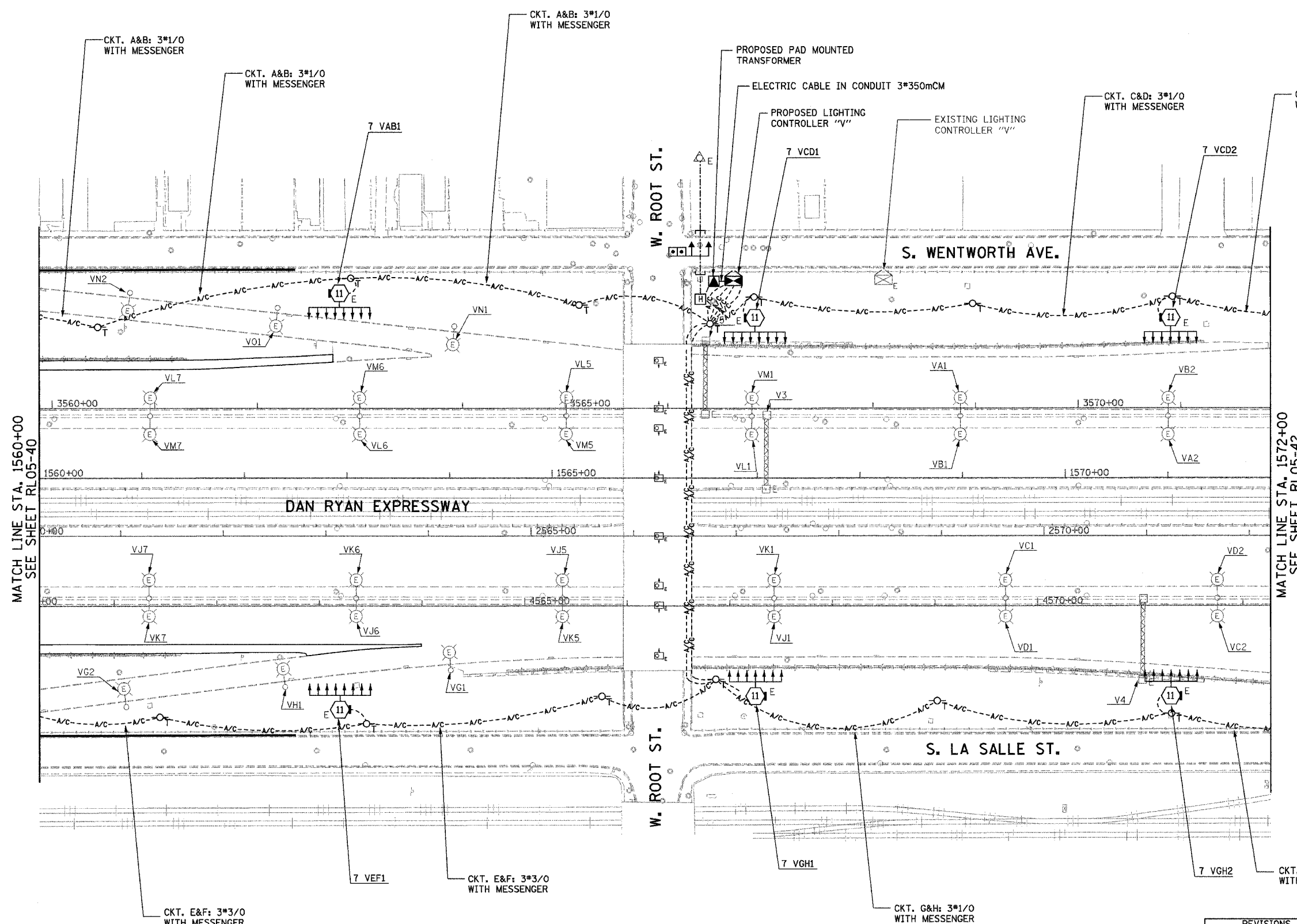


F.A.I. RTE.	SECTION	COUNTY	TOTAL SHEETS	SHEET NO.
94/90	2003-0311	COOK	976	154
STA. 1560+00		TO STA. 1572+00		
FED. ROAD DIST. NO.	ILLINOIS FED. AID PROJECT			

62583



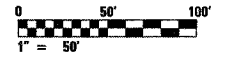
- NOTES:**
1. SEE DRAWINGS ME-01 AND ME-02 FOR ELECTRICAL SYMBOLS AND ABBREVIATIONS.
 2. UNLESS NOTED OTHERWISE, ALL ITEMS AND WORK SHOWN IN HEAVY LINE WEIGHT ON THIS DRAWING ARE PROPOSED NEW ITEMS AND WORK.
 3. SEE DRAWING ES-07 FOR HIGH MAST LIGHT TOWER SCHEDULE.
 4. PROPOSED HIGH MAST TOWERS SHALL BE INSTALLED AS INDICATED. THE TOWERS SHALL BE CONNECTED TO THE PROPOSED LIGHTING CONTROLLERS.
 5. AERIAL CABLE AND TEMPORARY WOOD POLES SHALL BE INSTALLED TO PROVIDE TEMPORARY CONNECTIONS FOR THE PROPOSED HIGH MAST TOWERS.
 6. EXISTING LIGHTING SHALL REMAIN OPERATIONAL UNTIL THE PROPOSED HIGH MAST TOWERS ARE INSTALLED AND OPERATIONAL.
 7. ALL LIGHTING CONTROLLERS MUST BE INSTALLED AS SHOWN ON DRAWINGS ME-18 THROUGH ME-20, UNLESS NOTED OTHERWISE.
 8. TEMPORARY LIGHTING SHALL BE INSTALLED AS SHOWN, BUT NOT OPERATIONAL.
 9. FOR AERIAL CABLE ATTACHED TO BRIDGE STRUCTURE, SEE DRAWING ME-25B. THE AERIAL CABLE TO THE JUNCTION BOX IS NOT APPLICABLE AT THIS BRIDGE STRUCTURE.

MATCH LINE STA. 1560+00
SEE SHEET RL05-40

MATCH LINE STA. 1572+00
SEE SHEET RL05-42

RL05-41

K&E
KAM ENGINEERING, INC.
 CONSULTING ENGINEERS
 707A Davis Road, Suite 205
 Elgin, Illinois 60123-1369



REVISIONS	
NAME	DATE

ILLINOIS DEPARTMENT OF TRANSPORTATION
 F.A.I. 94/90 (DAN RYAN EXPRESSWAY)
 31st STREET TO I-57

**ROADWAY LIGHTING PLANS
 PROPOSED IMPROVEMENTS 2005**

SCALE: 1"=50'
 DATE: OCTOBER 29, 2004

DRAWN BY: BL
 CHECKED BY: SM

G:\proj\94\90\31st\Lighting\RL05-41.dwg 11/23/2004 02:29:52 PM