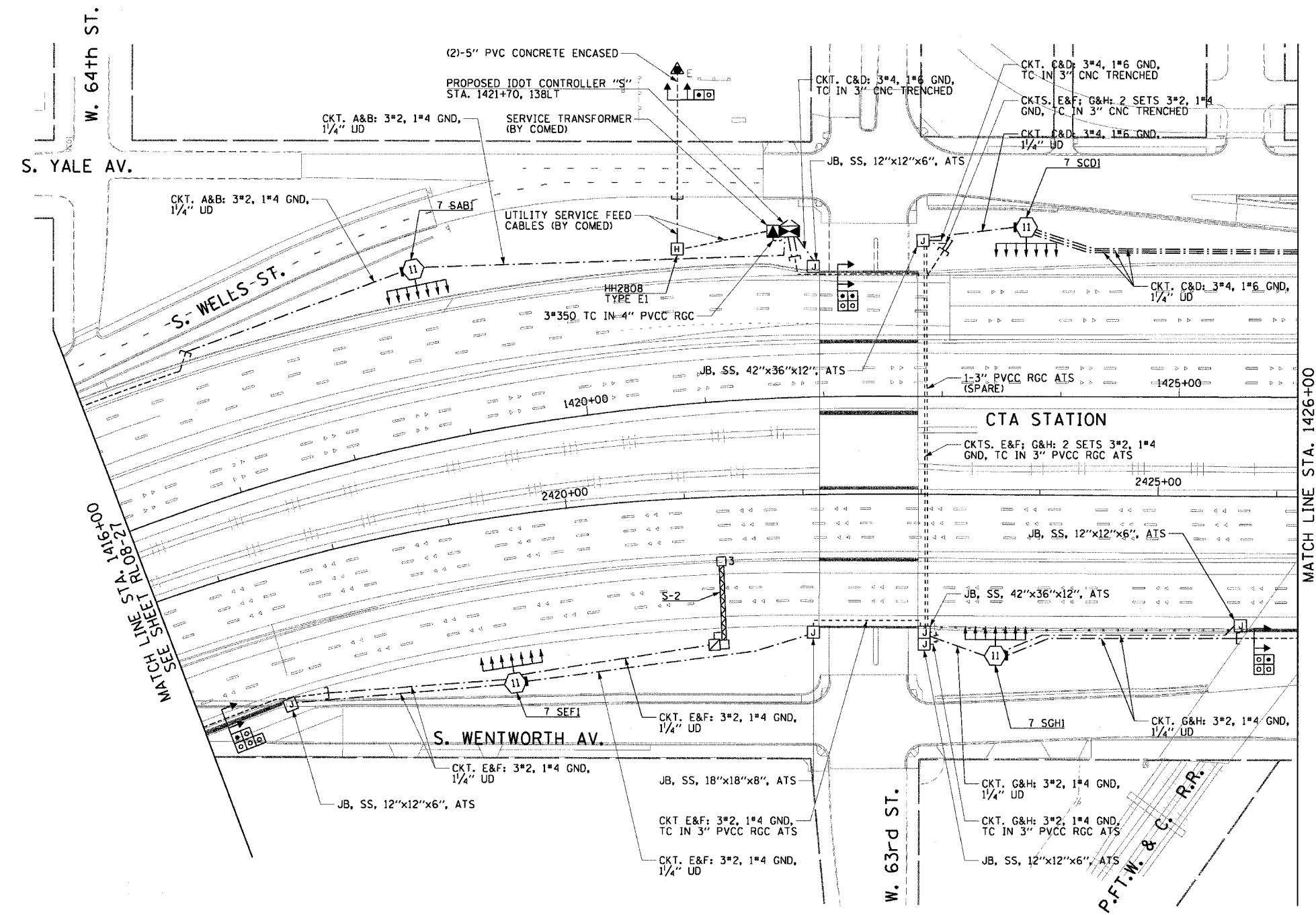


F.A.I. RTE.	SECTION	COUNTY	TOTAL SHEETS	SHEET NO.
90/94	2003-0311	COOK	976	284
STA. 1416+00.00 TO STA. 1426+00.00				
FED. ROAD DIST. NO. 1		ILLINOIS	FED. AID PROJECT	

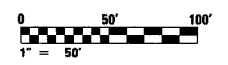
62583

**NOTES:**

1. SEE DRAWINGS ME-01 AND ME-02 FOR ELECTRICAL SYMBOLS AND ABBREVIATIONS.
2. SEE DRAWING ES-04 FOR HIGH MAST LIGHT TOWER SCHEDULE.
3. SEE DRAWING UL-24 FOR WENTWORTH AV. UNDERPASS LIGHTING PLANS.
4. SEE DRAWING UL-25 FOR 63rd STREET UNDERPASS LIGHTING PLANS.
5. SEE DRAWING UL-26 FOR P. FT. W. & C. RAILROAD UNDERPASS LIGHTING PLANS.



MATCH LINE STA. 1426+00  
SEE SHEET RL08-29



RL08-28

REVISIONS	
NAME	DATE

ILLINOIS DEPARTMENT OF TRANSPORTATION  
F.A.I. 90/94 (DAN RYAN EXPRESSWAY)  
31st STREET TO I-57

**ROADWAY LIGHTING PLANS  
FINAL CONDITIONS**

SCALE: 1"=50'  
DATE: October 29, 2004

DRAWN BY: CJM  
CHECKED BY: WDS

**CTE ENGINEERS**  
CONSOER TOYANSEN & BRODYNE ENGINEERS, INC.  
303 EAST WACKER DRIVE, SUITE 600  
CHICAGO, ILLINOIS 60601-5202, PHONE: (312) 938-0300

11/18/2004 0100458 PM